

PONGTORN GETSOM

portfolio

PONGTORN GETSOM



CONTACT

pqgetsom@gmail.com
+66 61 289 6592

EDUCATION

B.S. in Interior Design

CIDA and NKBA accredited Degree
The Art Institute of Philadelphia
OCT 2008 - SEP 2011

SKILLS

Interior Design
Space Planning
Architectural Visual Presentation
Construction Documents
Design Development
Project Management

COMPUTER SKILLS

Autodesk AutoCAD
SketchUp + V-Ray
Rhinoceros + V-Ray
Adobe Photoshop
Adobe InDesign
Adobe Illustrator
Microsoft Office
Autodesk Revit

LANGUAGES

English
Thai

EXPERIENCES

JAN 2013 - PRESENT
JAN 2012 - OCT 2012

ALEXANDER ZILBERMAN ARCHITECTURE P.C.

International Architectural Designer
Junior Architectural Designer

- Work on a multitude of High-end Retail Flagship Stores, Shop-in-Shops, Roll-out Prototyping Stores, Corporate, Wellness Centers, and Residential projects.
- Utilize well-established fashion brands' store design principles, strategies and guidelines that are appropriate to specific project requirements and challenges.
- Deliver clear and beautifully composed design drawings, documentation and carry-out the assigned project specific roles and responsibilities within studio's and brands' standards and principles, in a productive manner
- Partake in the development of Victoria's Secret ideal plan templates and new concept for low-cost storefront design solutions for potential retail store roll-out

STEVEN J. LEACH, JR. + ASSOCIATES LIMITED

NOV 2015 - OCT 2016
Interior Designer

- Develop space planning, interior design, concept development with emphasis on aesthetic and conformity to design concept for Shopping Center projects
- Prepare design drawings and construction documents as well as presentation of material for client meetings with support and direction of Design Director and Senior Designers
- Assist in selection of materials, finishes, equipment, furniture, accessories, etc.

INFANTRY CENTRE AT FORT THANARAT

NOV 2014 - OCT 2015
Private Soldier

- Perform duties at Third Rifle Company Headquarter, 2nd Infantry Battalion

CREG R. OOSTERHART DESIGN

JUL 2011 - DEC 2011
Interior Design Intern

- Assist the principal and provide all necessary support and design ideas
- Produce visual presentations including sketches, drawings and renderings
- Research furniture and materials specifications and pricing.
- Prepare and archive presentations into digital files

THE ART INSTITUTE OF PHILADELPHIA LIBRARY

APR 2009 - MAR 2011
Library Assistant

- Maintain library circulation utilizing Library of Congress Classification system



Credit: Alexander Zilberman Architecture, P.C.

INVOLVEMENT

• Translating drawings into AZA standards • Creating millwork DD drawing library in AZA standards • Schematic Design drawing set • Design Development drawing set



Credit: Alexander Zilberman Architecture, P.C.

INVOLVEMENT

- Translating drawings into AZA standards
- Creating millwork DD drawing library in AZA standards
- Schematic Design drawing set
- Design Development drawing set

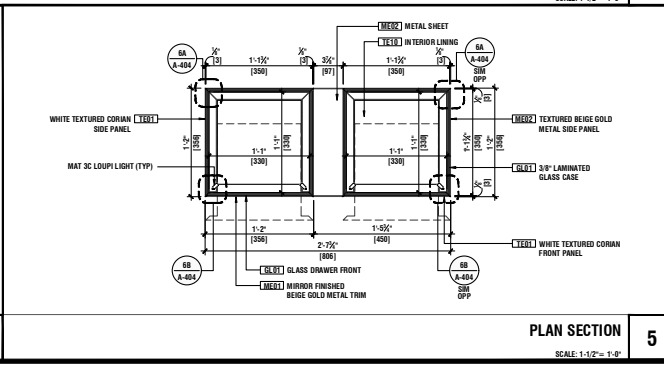
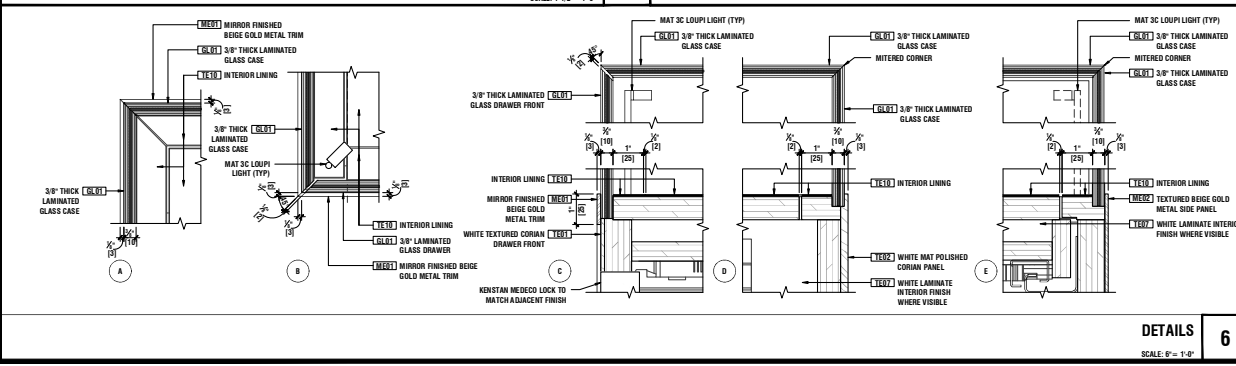
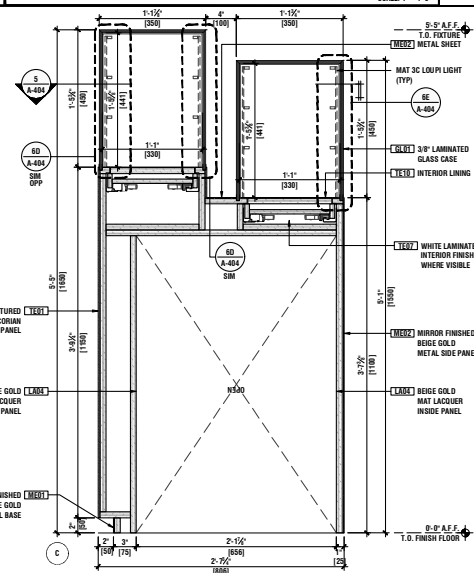
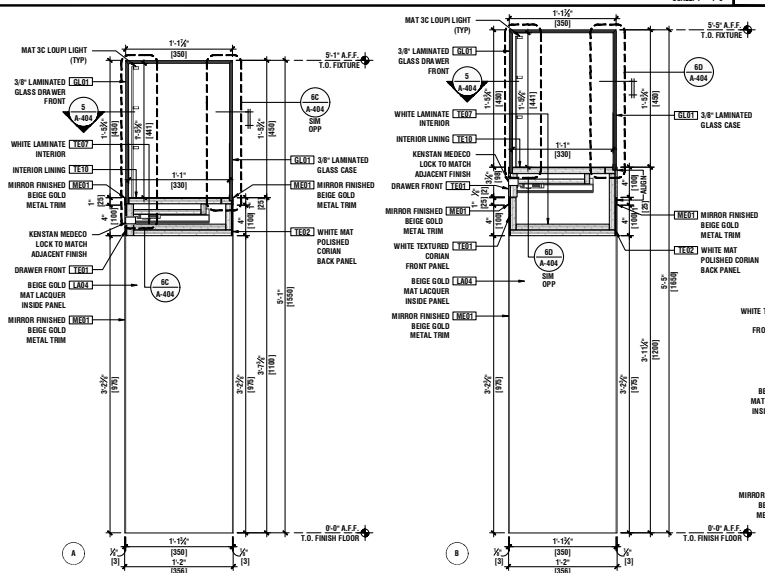
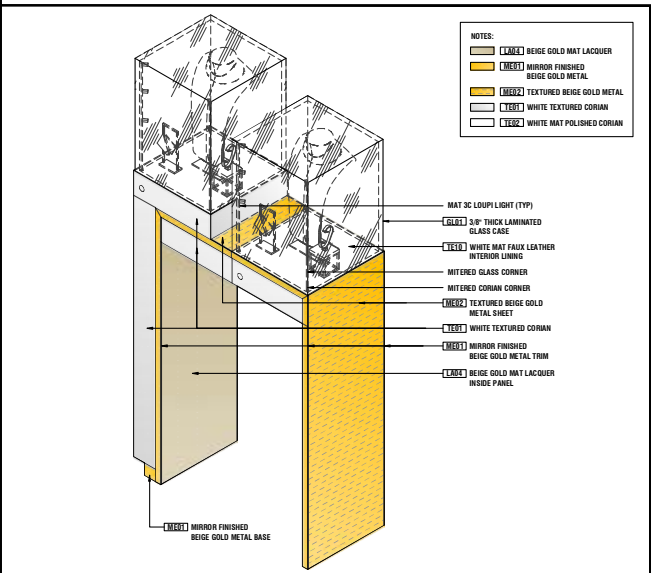
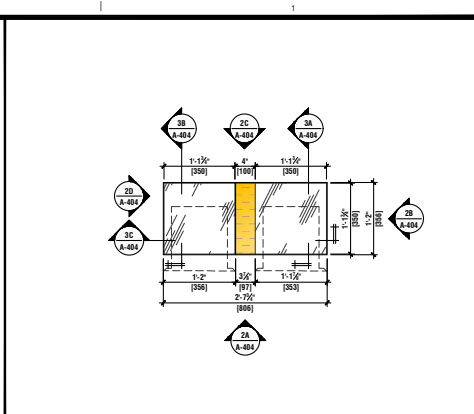
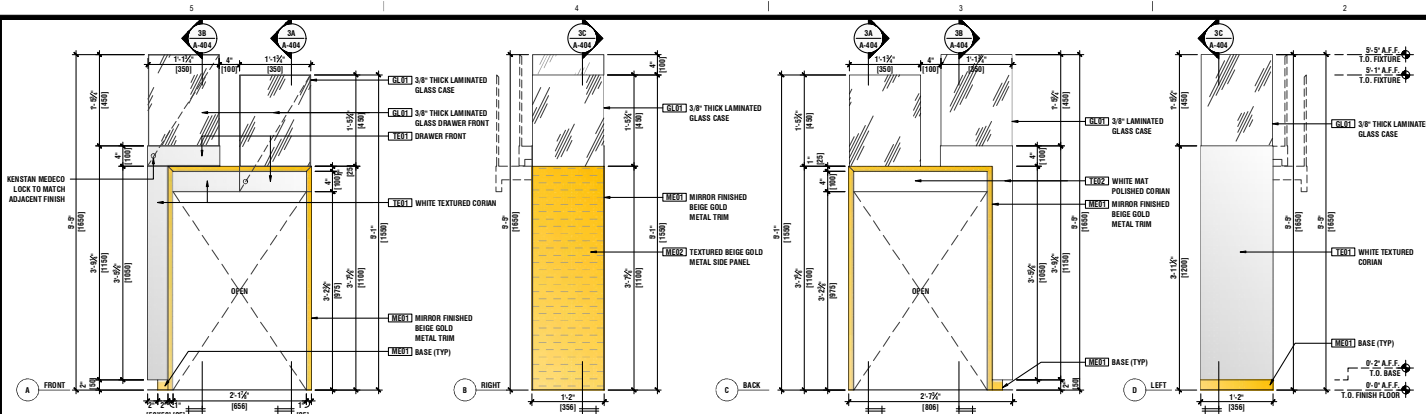


Credit: Alexander Zilberman Architecture, P.C.

INVOLVEMENT

- Translating drawings into AZA standards
- Creating millwork DD drawing library in AZA standards
- Schematic Design drawing set
- Design Development drawing set

DATE	REVISION
06.03.19	PROGRESS SET



CHANEL

CLIENT: CHANEL
 9 WEST 57TH ST
 NEW YORK, NY 10019
 SAMIRA YAGHMAI
 T: (212) 333-8733
 EMAIL: samira.yaghmai@chanelusa.com
 PROJECT LOCATION:
 SPACE #
 CH NEWMAN MARCUS, SIS
 3300 S LAS VEGAS BLVD
 LAS VEGAS, NV 89109

SHEET TITLE:
LF-2
MILLWORK
DETAILS
 PROJECT NO. 1903-479
 DATE: 05.31.19
 DRAWN BY: AZA
 REVIEWED BY: AZ
 SHEET NO.

A-404.00

VICTORIA'S SECRET 86TH STREET, BROOKLYN, NY

retail

VICTORIA'S SECRET



Credit: Alexander Zilberman Architecture, P.C.

INVOLVEMENT

• Storefront design study presentation • Store layout study drawings • Schematic Design drawing set • Design Development drawing set • Construction Document drawing set



Credit: Alexander Zilberman Architecture, P.C.



INVOLVEMENT

• Storefront design study presentation • Store layout study drawings • Schematic Design drawing set • Design Development drawing set • Construction Document drawing set



Credit: Alexander Zilberman Architecture, P.C.

INVOLVEMENT

• Stair hall design study presentation • Store layout study drawings • Schematic Design drawing set • Design Development drawing set • Construction Document drawing set



INVOLVEMENT
 • Stair hall design study presentation • Schematic Design drawing set • Design Development drawing set • Construction Document drawing set

Credit: Alexander Zilberman Architecture, P.C.



Credit: Alexander Zilberman Architecture, P.C.

INVOLVEMENT

• Storefront design study presentation • Store layout study drawings • Design Development drawing set



Credit: Alexander Zilberman Architecture, P.C.



INVOLVEMENT

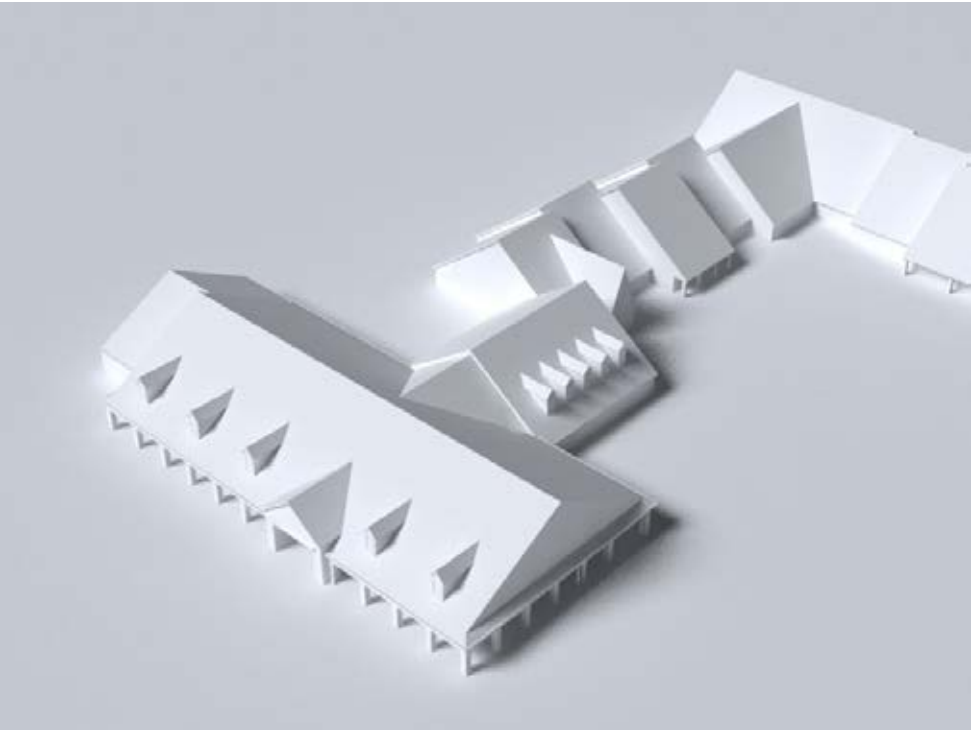
• Storefront design study presentation • Store layout study drawings • Design Development drawing set



Credit: Alexander Zilberman Architecture, P.C.

INVOLVEMENT

• Building mass study presentation • Design Development drawing set



Credit: Alexander Zilberman Architecture, P.C.

INVOLVEMENT
• Building mass study presentation • Design Development drawing set





Credit: Steven J. Leach, Jr. + Associates Limited



Credit: Steven J. Leach, Jr. + Associates Limited

INVOLVEMENT
 • Void edge, interior cladding, and ceiling study • Schematic Design • Visual presentation • FF&E selection



Credit: Steven J. Leach, Jr. + Associates Limited



Phase I

Credit: Alexander Zilberman Architecture, P.C.

INVOLVEMENT
• Building mass study presentation • 3D visual presentation • Design Development drawing set



Phase II



Credit: Alexander Zilberman Architecture, P.C.

INVOLVEMENT
• Building mass study presentation • 3D visual presentation • Design Development drawing set



Credit: Alexander Zilberman Architecture, P.C.

INVOLVEMENT

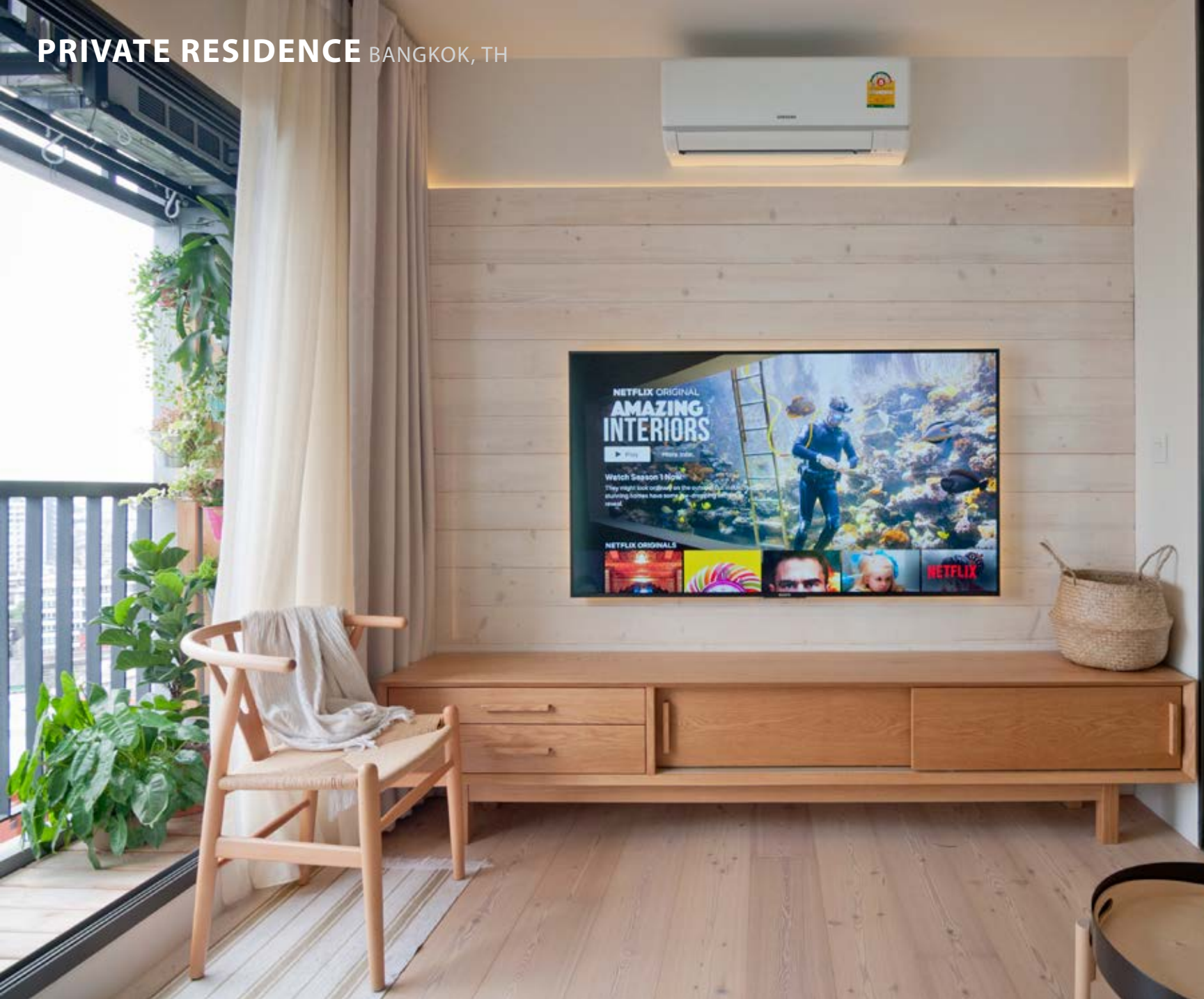
• Building mass study presentation • 3D visual presentation • Design Development drawing set



Credit: Alexander Zilberman Architecture, P.C.

INVOLVEMENT

• Building mass study presentation • 3D visual presentation • Design Development drawing set



INVOLVEMENT

- Interior Design • Space planning • Kitchen Design • FF&E • Lighting • Decorations • Cost estimate • Project coordination • Installation



INVOLVEMENT

• Interior Design • Space planning • Kitchen Design • FF&E • Lighting • Decorations • Cost estimate • Project coordination • Installation



INVOLVEMENT

• Interior Design • Space planning • Kitchen Design • FF&E • Lighting • Decorations • Cost estimate • Project coordination • Installation

Philadelphia City Hall - watercolor



other



Philadelphia City Hall - hand sketch