



DATE: 04/03/21
CLIENT: BRITISH CHINESE INTERNATIONAL SCHOOL
PROJECT: NEW BUILD HIGH SCHOOL COMPLEX

S+ubley
S+udio^{Co., Ltd.}
ARCHITECTURAL + GRAPHIC DESIGN

CONCEPT DESIGN STATEMENT

BRITISH CHINESE INTERNATIONAL SCHOOL (B.C.I.S.) IS THE LATEST SCHOOL IN A LONG LINE OF SCHOOLS THAT HAVE BEEN DEVELOPED AND MANAGED BY KHUN AMPORN. AS TIME HAS MOVED ALONG, THE OWNER'S AMBITION HAS GROWN.

THE CONCEPT FOR B.C.I.S. IS SIMPLE, TO GENERATE AN INCREDIBLE ENVIRONMENT FOR STUDENTS TO ENJOY LEARNING IN AND STAFF TO ENJOY WORKING IN. B.C.I.S. IS SET TO BECOME THE FIRST SPORTS ACADEMY SCHOOL IN CHIANG MAI, LEADING THE WAY FOR SPORTS EXCELLENCE IN THE DISTRICT.

THERE HAS BEEN A SPECIAL REQUEST TO IMPROVE ALL TYPES OF SPORTING FACILITIES ON THE CAMPUS INCLUDING;

1. STATE OF THE ART SWIMMING FACILITIES TO ALLOW THE STUDENTS TO COMPETE AT A HIGH STANDARD WHILST ALSO ALLOWING THE SCHOOL SPORTING FACILITIES TO BE LEASED OUT.
2. SHADES SPORTS FIELDS TO INCREASE THE USEABILITY OF THE LAND DUE TO THAILAND BEING SUCH A HOT AND SUNNY COUNTRY.
3. SPORTS CENTRE FACILITIES TO BE USEABLE FOR STUDENTS DURING LUNCH BREAKS.

THERE ARE CURRENTLY TWO TREES WHICH DOMINATE THE LAND. TREES ARE A GREAT SOURCE OF NATURAL SHADING. STUBLEY STUDIO INTENDS TO HAVE THE ACADEMIC AND SPORTS FACILITIES TO WRAP AROUND THESE TREES, CREATING A 'MIXING SPACE' FOR STUDENTS TO ENJOY WHEN ON BREAK, AND GIVE AN ADDED FEELING OF SECURITY. TO BOLSTER THE SHADING,

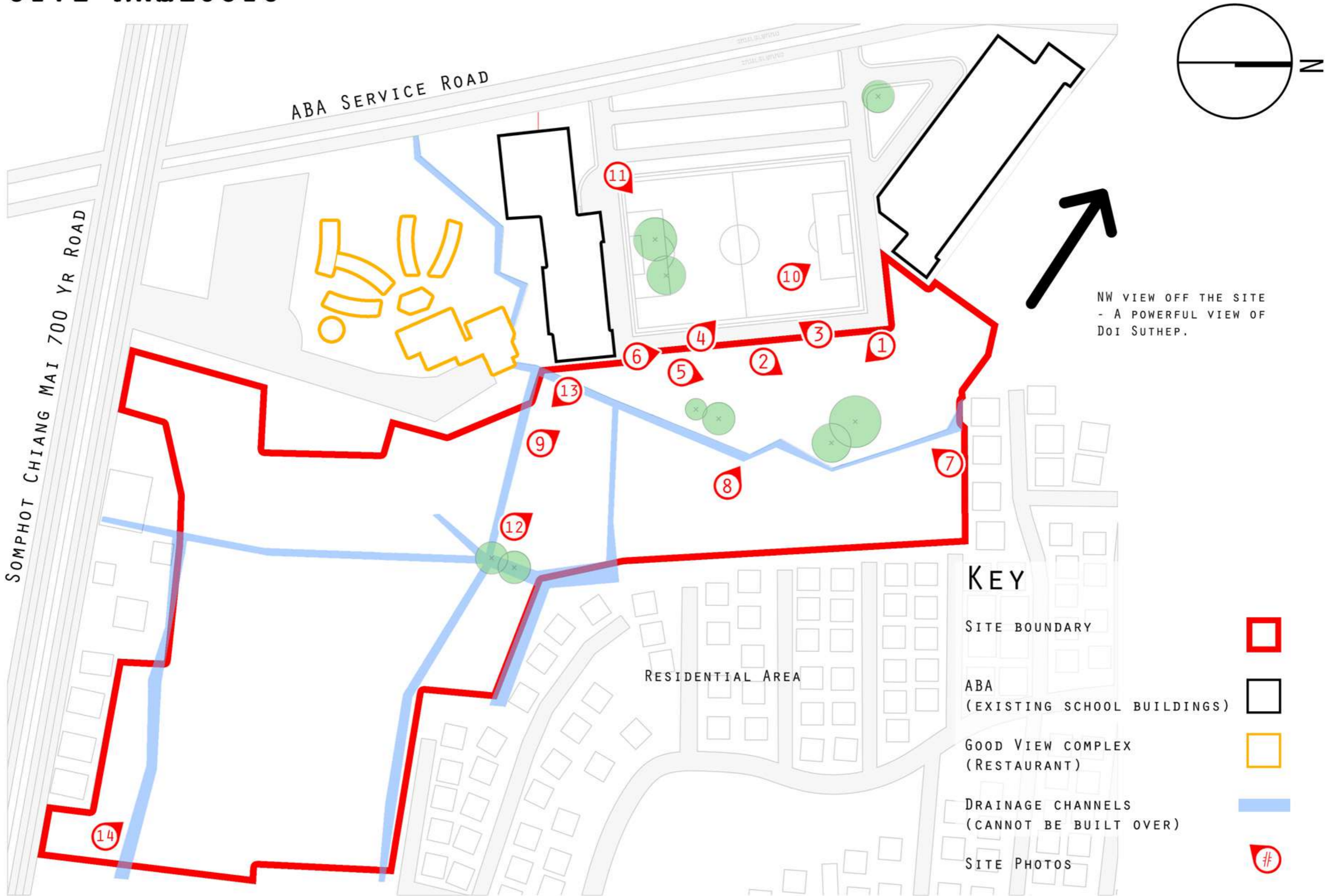
TREES SHALL LINE PATHWAYS AND LITTER COURT YARDS SO AS NOT TO KEEP THE STUDENTS' PRISONER INSIDE THE SCHOOL DURING THE HOTTER, SUNNIER MONTHS.

THE ACADEMIC STUDENT SPACES SHALL BE DESIGNED TO ALLOW FOR NOT ONLY SOLO STUDY, BUT GROUP STUDY ALSO, TO ALLOW FOR A MEETING OF MINDS. GREENERY SHALL FLOW THROUGH INTO AN INTERNAL ATRIUM, LIFTING THE SPACE, GIVING THE STUDENTS AN INSPIRING SPACE TO RELAX AND WORK IN.






THERE ARE BEAUTIFUL VIEWS OF MOUNTAINS TO THE WEST OF THE SITE WHICH WILL BE USED FOR THE CLASSROOMS, GIVING THE STUDENTS AN INSPIRING AND CALMING VIEW WHILST STUDYING.

ALL IN ALL, THE PROJECT WILL BE UNIQUELY DESIGNED FOR THE SITE, AIMING TO INSPIRE AND MOTIVATE STUDENTS TO ATTAIN THEIR AMBITIONS.

SITE ANALYSIS



KEY

- SITE BOUNDARY 
- ABA (EXISTING SCHOOL BUILDINGS) 
- GOOD VIEW COMPLEX (RESTAURANT) 
- DRAINAGE CHANNELS (CANNOT BE BUILT OVER) 
- SITE PHOTOS 

SITE PHOTOS

1



2



3



4



5



6



7



8



SITE PHOTOS

9



10



11



12



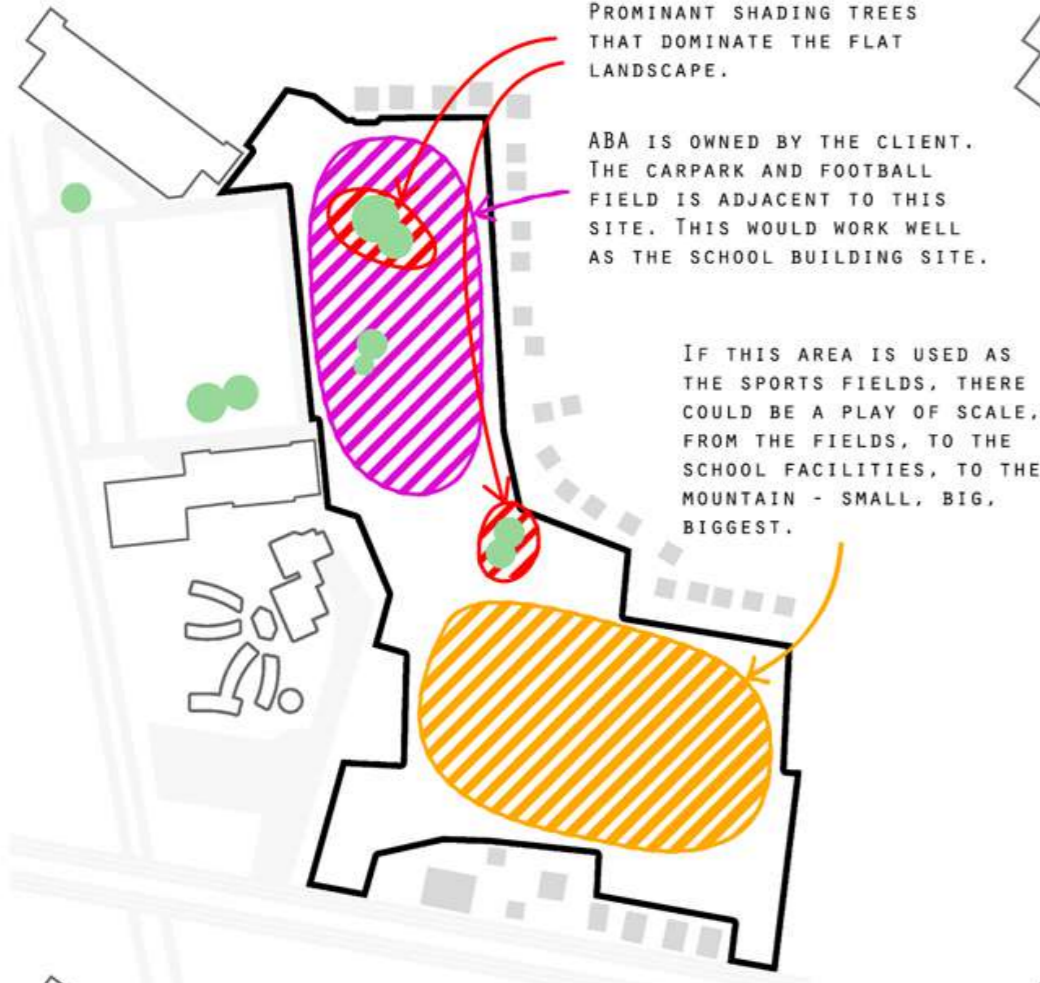
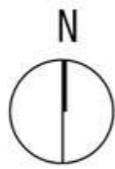
13



14



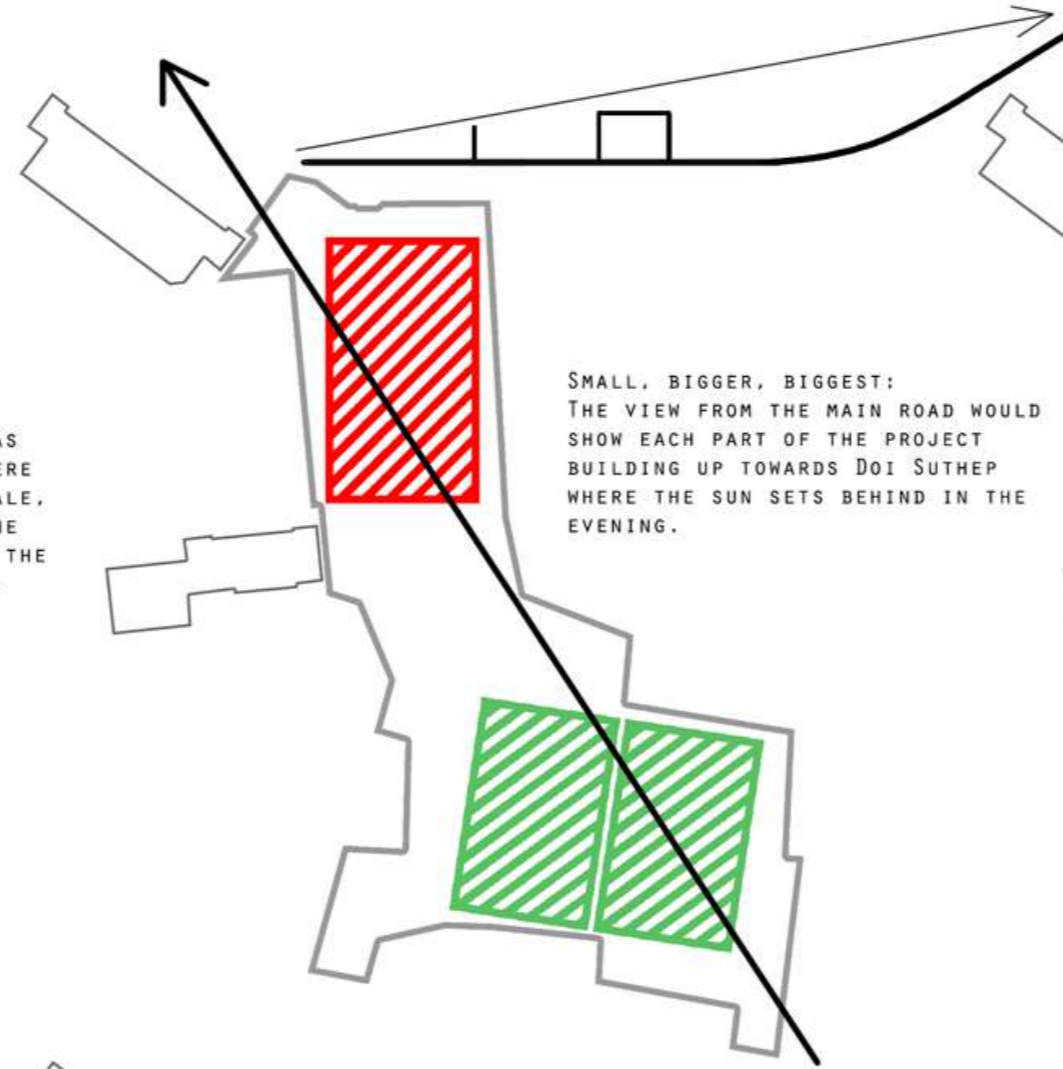
DESIGN PROCESS



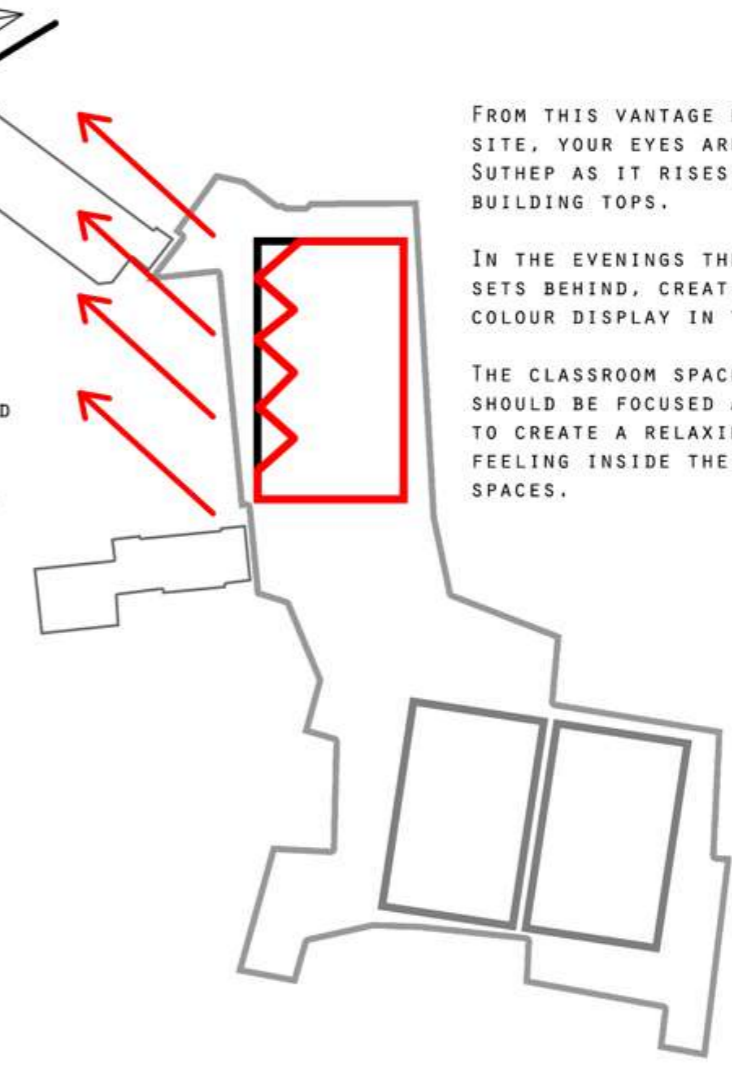
PROMINANT SHADING TREES THAT DOMINATE THE FLAT LANDSCAPE.

ABA IS OWNED BY THE CLIENT. THE CARPARK AND FOOTBALL FIELD IS ADJACENT TO THIS SITE. THIS WOULD WORK WELL AS THE SCHOOL BUILDING SITE.

IF THIS AREA IS USED AS THE SPORTS FIELDS, THERE COULD BE A PLAY OF SCALE, FROM THE FIELDS, TO THE SCHOOL FACILITIES, TO THE MOUNTAIN - SMALL, BIG, BIGGEST.



SMALL, BIGGER, BIGGEST: THE VIEW FROM THE MAIN ROAD WOULD SHOW EACH PART OF THE PROJECT BUILDING UP TOWARDS DOI SUTHEP WHERE THE SUN SETS BEHIND IN THE EVENING.



FROM THIS VANTAGE POINT ON THE SITE, YOUR EYES ARE DRAWN TO DOI SUTHEP AS IT RISES HIGH ABOVE THE BUILDING TOPS.

IN THE EVENINGS THE SUN SLOWLY SETS BEHIND, CREATING A BEAUTIFUL COLOUR DISPLAY IN THE SKY.

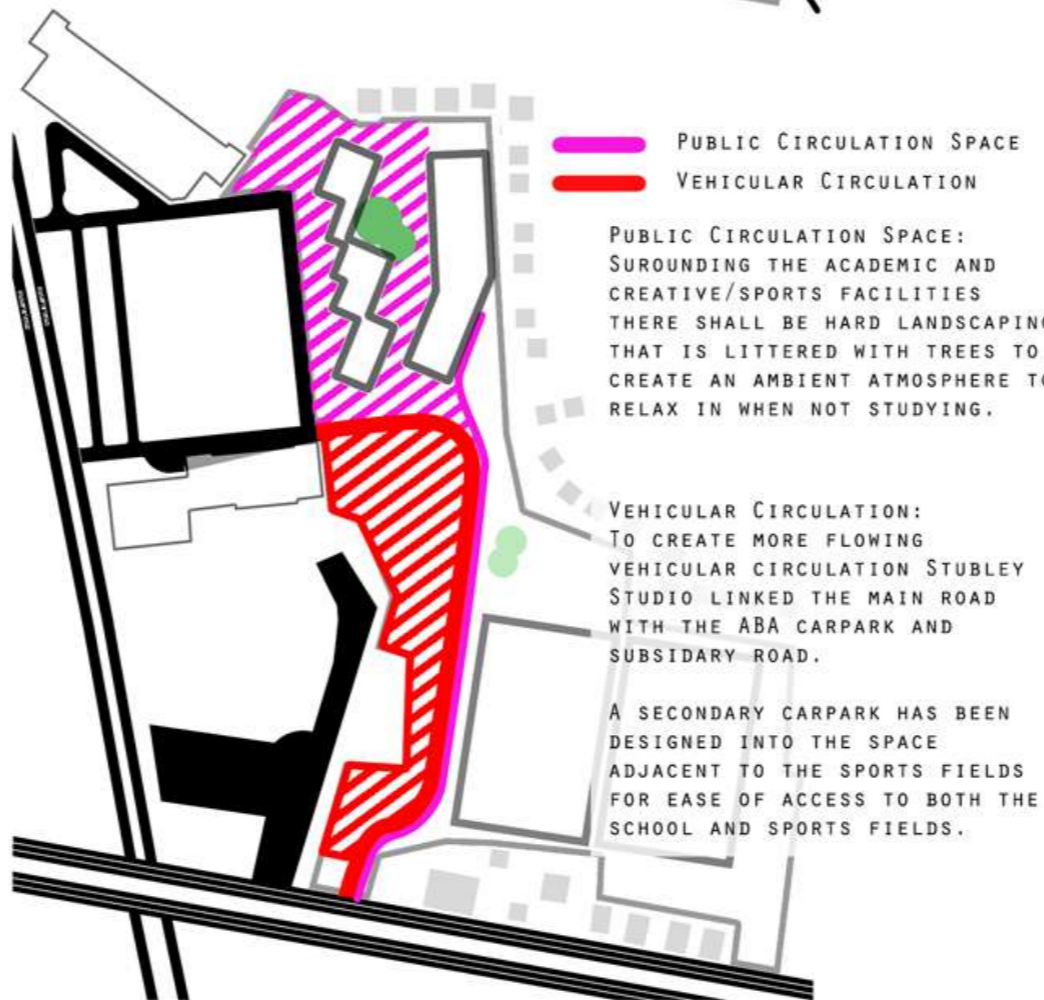
THE CLASSROOM SPACES WITHIN BCIS SHOULD BE FOCUSED AROUND THIS VIEW TO CREATE A RELAXING, UPLIFTING FEELING INSIDE THE EDUCATION SPACES.



CHIANG MAI CAN BE INCREDIBLY HOT AT CERTAIN TIMES IN THE YEAR.

THE LARGE SHELTER TREES NOW BECOME THE MAIN FEATURE OF THE SCHOOL COURTYARD, CREATING SOME MUCH NEEDED SHADE.

THE DRAINAGE CHANNELS CANNOT HAVE BUILDINGS UPON THEM BUT THEY CAN BE COVERED TO CREATE A COOL, COURTYARD SPACE THAT WILL CONNECT AND SEPERATE THE ACADEMICS FROM THE CREATIVE AND SPORTS FACILITIES.



PUBLIC CIRCULATION SPACE
VEHICULAR CIRCULATION

PUBLIC CIRCULATION SPACE: SURROUNDING THE ACADEMIC AND CREATIVE/SPORTS FACILITIES THERE SHALL BE HARD LANDSCAPING THAT IS LITTERED WITH TREES TO CREATE AN AMBIENT ATMOSPHERE TO RELAX IN WHEN NOT STUDYING.

VEHICULAR CIRCULATION: TO CREATE MORE FLOWING VEHICULAR CIRCULATION STUBLEY STUDIO LINKED THE MAIN ROAD WITH THE ABA CARPARK AND SUBSIDIARY ROAD.

A SECONDARY CARPARK HAS BEEN DESIGNED INTO THE SPACE ADJACENT TO THE SPORTS FIELDS FOR EASE OF ACCESS TO BOTH THE SCHOOL AND SPORTS FIELDS.

CLADDING ACADEMIC SPACE:

THIS SPACE SHALL BE CLAD IN TIMBER PANELLING AND LOUVRES, CONNECTING THE SPACE WITH THE FORESTED MOUNTAIN, DOI SUTHEP.



CREATIVE/SPORTS SPACE:

THIS SPACE SHALL BE CLAD IN ZINC. BRINGING A LIGHTER AND MORE DYNAMIC FEEL TO THE SPACE TO CONTRAST THE TIMBER FACADE OF THE ACADEMIC SPACE.



PLANS

SCHOOL AND SPORTS FACILITIES

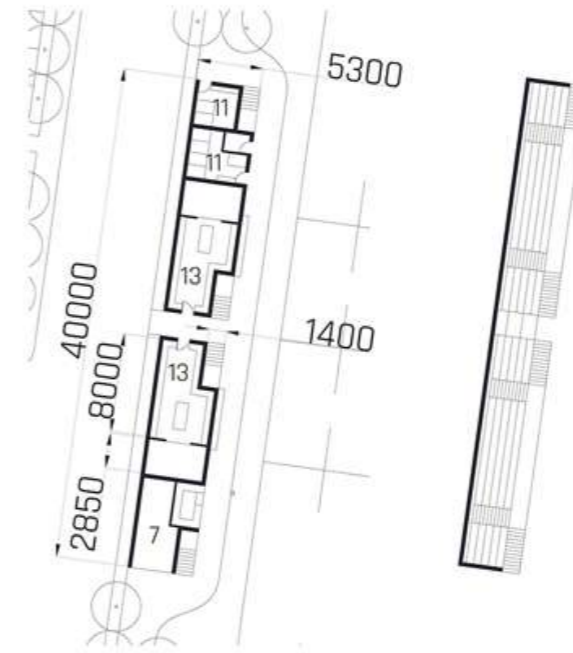
GROUND FLOOR PLAN



GRAND STAND

GROUND FLOOR PLAN

FIRST FLOOR PLAN



SITE PLAN 1:2000



CLIENT: B.C.I.S.
Somphot Chiang Mai 700 Pi Rd,
Mae Hia, Muang Chiang Mai 50100

DESIGNER: TOM STUBLEY

SITE: B.C.I.S.
(Next to Serene Lake)

TITLE: GROUND FLOOR PLAN,
SITE PLAN AND GRAND STAND

SCALE: 1:200	DATE: 04/03/21	DRAWN BY: TS	CHECKED BY: TS
--------------	----------------	--------------	----------------

**S+ubley
S+udio Co., Ltd.**
ARCHITECTURAL + GRAPHIC DESIGN
E: office@stubbleystudio.com T: 054 351 6625
A: Stubbley Studio Co. Ltd., 133/301 Sal 9, Moo 6,
Thaveehok, Tambon Talad Kwan, Amphoe Da Saket,
Mueang Chiang Mai, 50220
www.stubbleystudio.com

urban planning group

E: rob@urbanplanninggroup.com T: 080 707 6153
www.urbanplanninggroup.com



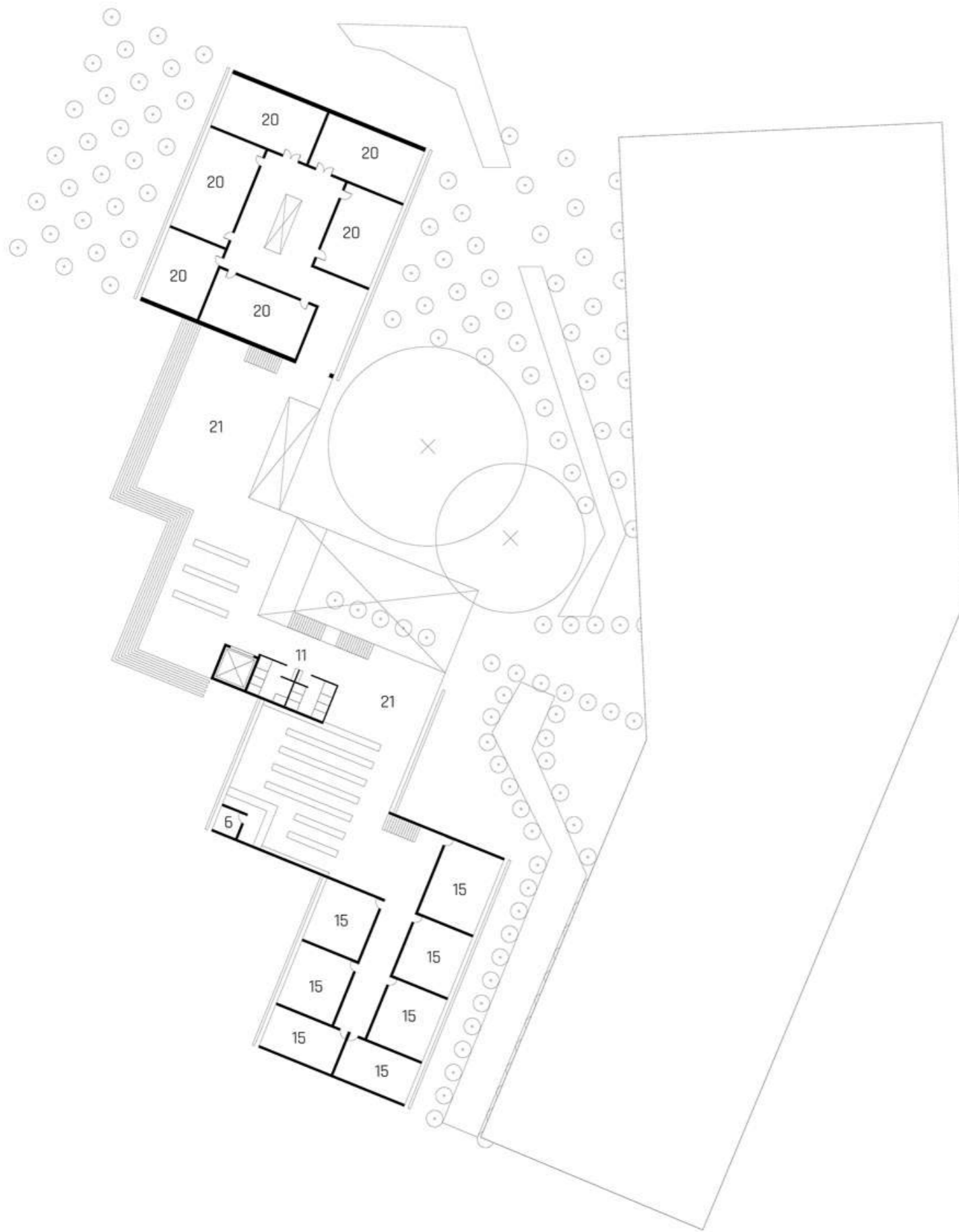
KEY

- Standard Size Olympic Pool
- Multi-Use Sports Hall:
5 aside football, Basketball court,
3 tennis/badminton courts,
3 Mini Basketball Courts,
Gymnastics - Hanging ropes, Climbing/Jumping
Equipment
- Hall/Theatre/Cafeteria
- Work Rooms/Cafeteria
- Reception
- Office
- Storage Room
- Plant Room
- Water Storage Room
- Atrium Space
- Toilets
- Cafeteria Kitchen
- Changing Rooms
- I.T. Classrooms
- Standard Class Rooms
- Bleachers
- Sports Centre Cafe
- Art Rooms
- Science Labs
- Design Technology Rooms
- Library/Workspace
- Staff Room

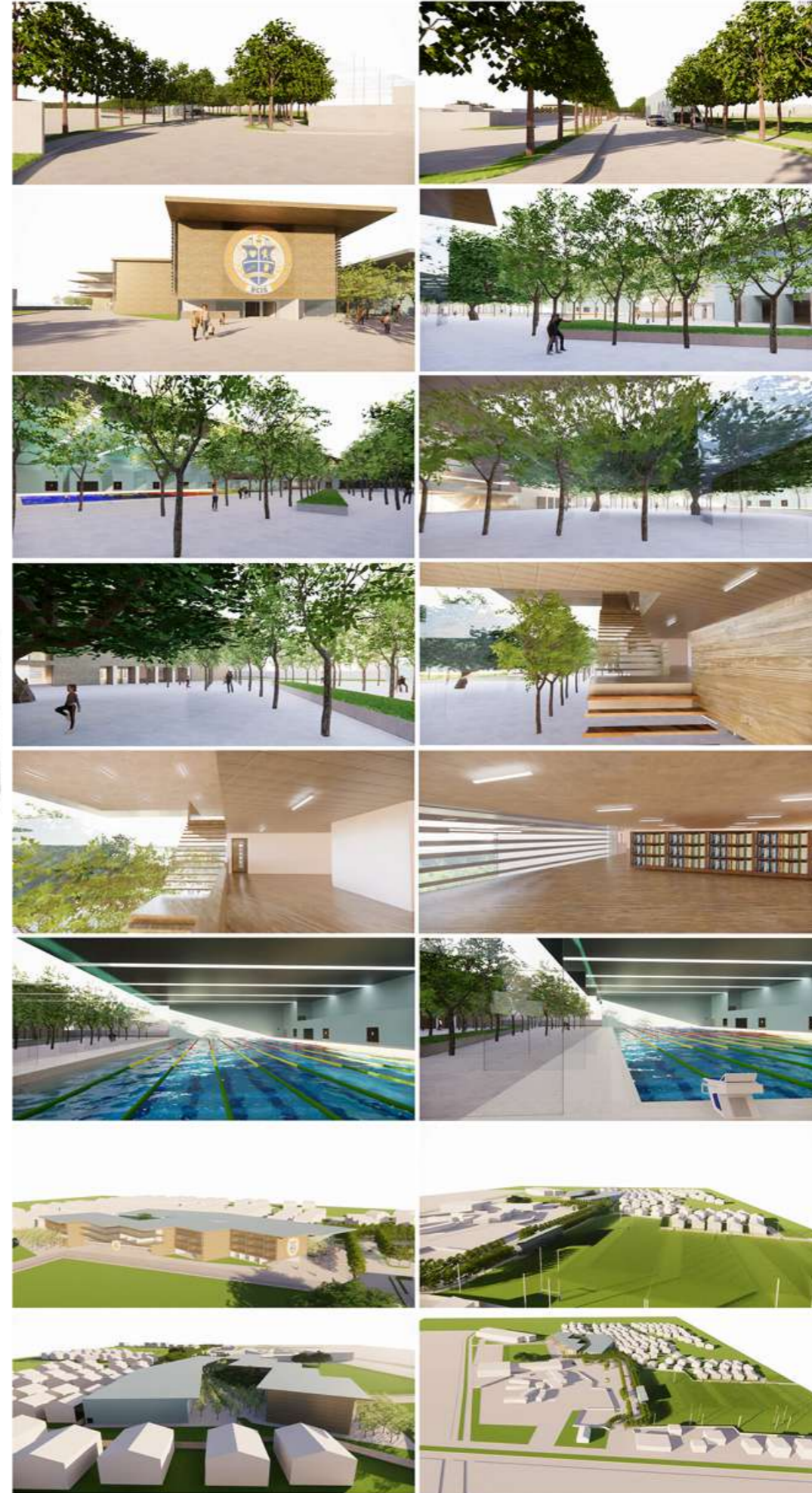
PLANS

SCHOOL AND SPORTS FACILITIES

THIRD FLOOR PLAN



RENDERS



CLIENT: B.C.I.S.
Samphot Chiang Mai 700 Pi Rd,
Mae Hia, Muang Chiang Mai 50100

DESIGNER: TOM STUBLEY

SITE: B.C.I.S.
(Next to Serene Lake)

TITLE: THIRD FLOOR PLAN,
RENDERS

SCALE:	DATE:	DRAWN BY:	CHECKED BY:
1:200	04/03/21	TS	TS

**S+ubley
S+udio** Co.,
LTD.
ARCHITECTURAL + GRAPHIC DESIGN
E: Office@StubleyStudio.com T: 064 351 6625
A: Stubley Studio Co. Ltd., 103/201 Soi 9, Moo 6,
Thaveechok, Tambon Talad Kwan, Amphoe Doi Saket,
Muang Chiang Mai, 50220
www.stubleystudio.com

urban planning group
E: rab@urbanplanninggroup.com T: 080 707 6159
www.urbanplanninggroup.com



KEY

1. Standard Size Olympic Pool
2. Multi-Use Sports Hall:
5 aside football, Basketball court,
3 tennis/badminton courts,
3 Mini Basketball Courts,
Gymnastics - Hanging ropes, Climbing/Jumping
Equipment
3. Hall/Theatre/Cafeteria
4. Work Rooms/Detention Centre
5. Reception
6. Office
7. Storage Room
8. Plant Room
9. Water Storage Room
10. Atrium Space
11. Toilets
12. Cafeteria Kitchen
13. Changing Rooms
14. I.T. Classrooms
15. Standard Class Rooms
16. Bleachers
17. Sports Centre Cafe
18. Art Rooms
19. Science Labs
20. Design Technology Rooms
21. Library/Workspace
22. Staff Room

VIEW LOOKING DOWN THE COLONADE OF TREES TOWARDS BCIS



VIEW LOOKING TOWARDS THE ZINC CLAD STAND/CHANGING FACILITIES
FROM THE SHADED RUGBY FIELDS



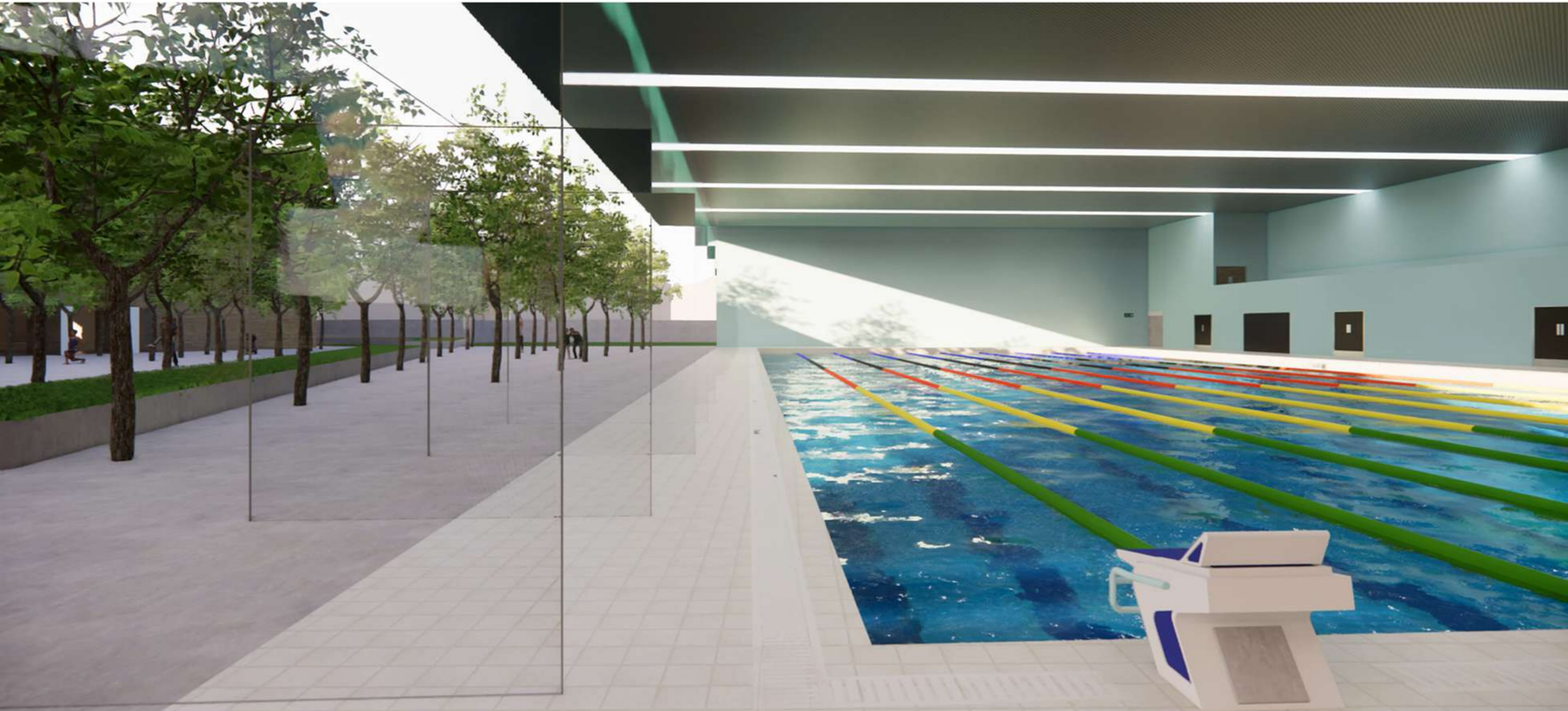
VIEW LOOKING TOWARDS THE RECEPTION AREA OF THE ACEDMIC BUILDING



VIEW LOOKING THROUGH THE WOODED COURTYARD SPACE BETWEEN THE ACADEMIC AND CREATIVE/SPORTS FACILITIES



VIEW SHOWING THE ROTATING GLASS WALLS CONNECTING THE OLYMPIC POOL WITH THE WOODED COURTYARD SPACE





A VIEW LOOKING INTO THE LOUVRED
SHARED SPACE/LIBRARY AREA



VIEW SHOWING THE CIRCULATION
OVERLOOKING THE ATRIUM SPACE

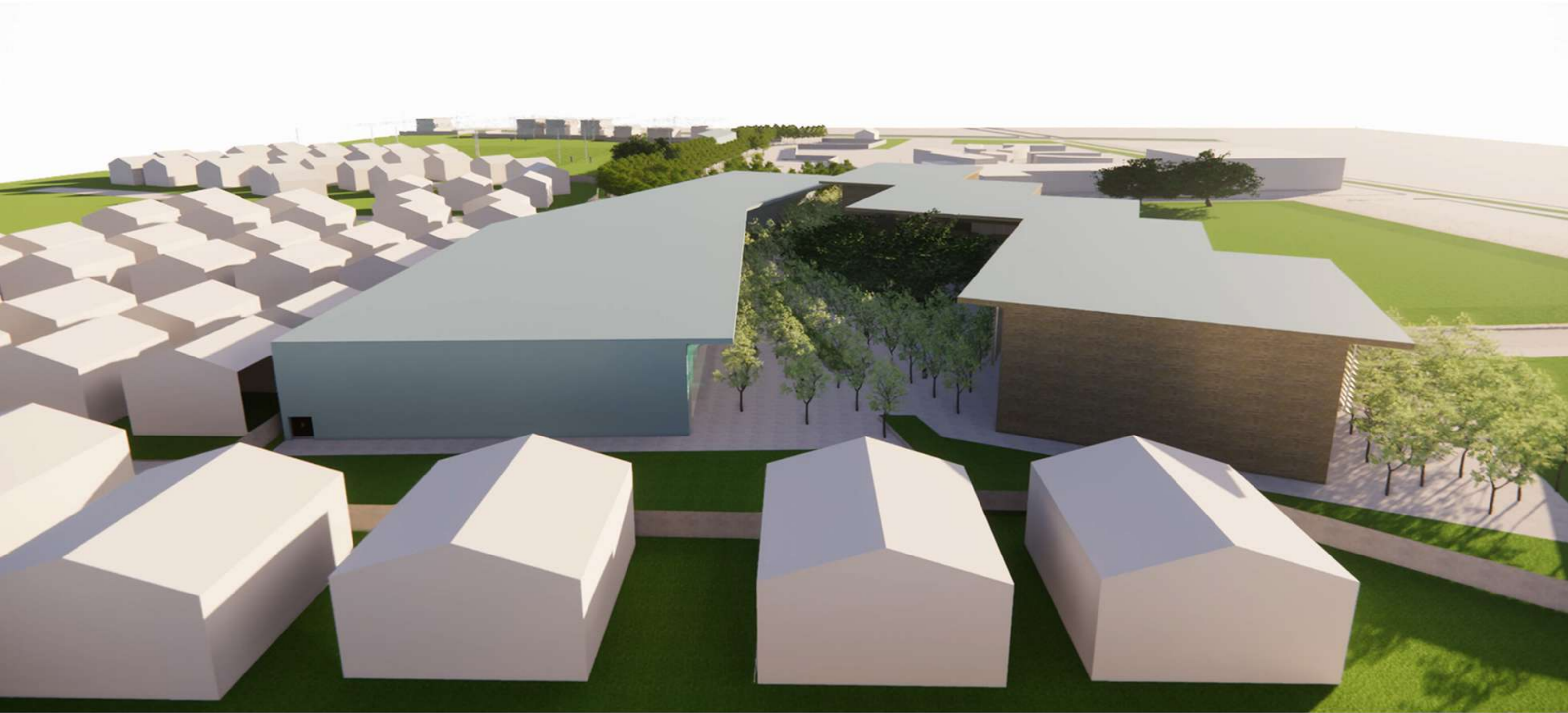


VIEW SHOWING THE ATRIUM SPACE
FLOWING OUT INTO THE WOODDED
COURTYARD SPACE

VIEW TOWARDS THE STUDENT LOBBY ENTRANCE / STAGGERED MOUNTAIN VIEW
CLASSROOMS



BIRDSEYE VIEW LOOKING SOUTH FROM THE WOODED COURTYARD



BIRDSEYE VIEW LOOKING EAST TOWARDS STAGERED MOUNTAIN VIEW CLASSROOMS



BIRDSEYE VIEW LOOKING EAST TOWARDS STAGERED MOUNTAIN VIEW CLASSROOMS

