

**ROCCO
FELICE
CORINI**

Portfolio

Jade Vineyard

Ning Xia, CN

COMPANY: TRACE ARCHITECTURE OFFICE.

PROGRAM: Wine production, Hospitality, Display.

BUILT AREA: 5831 m².

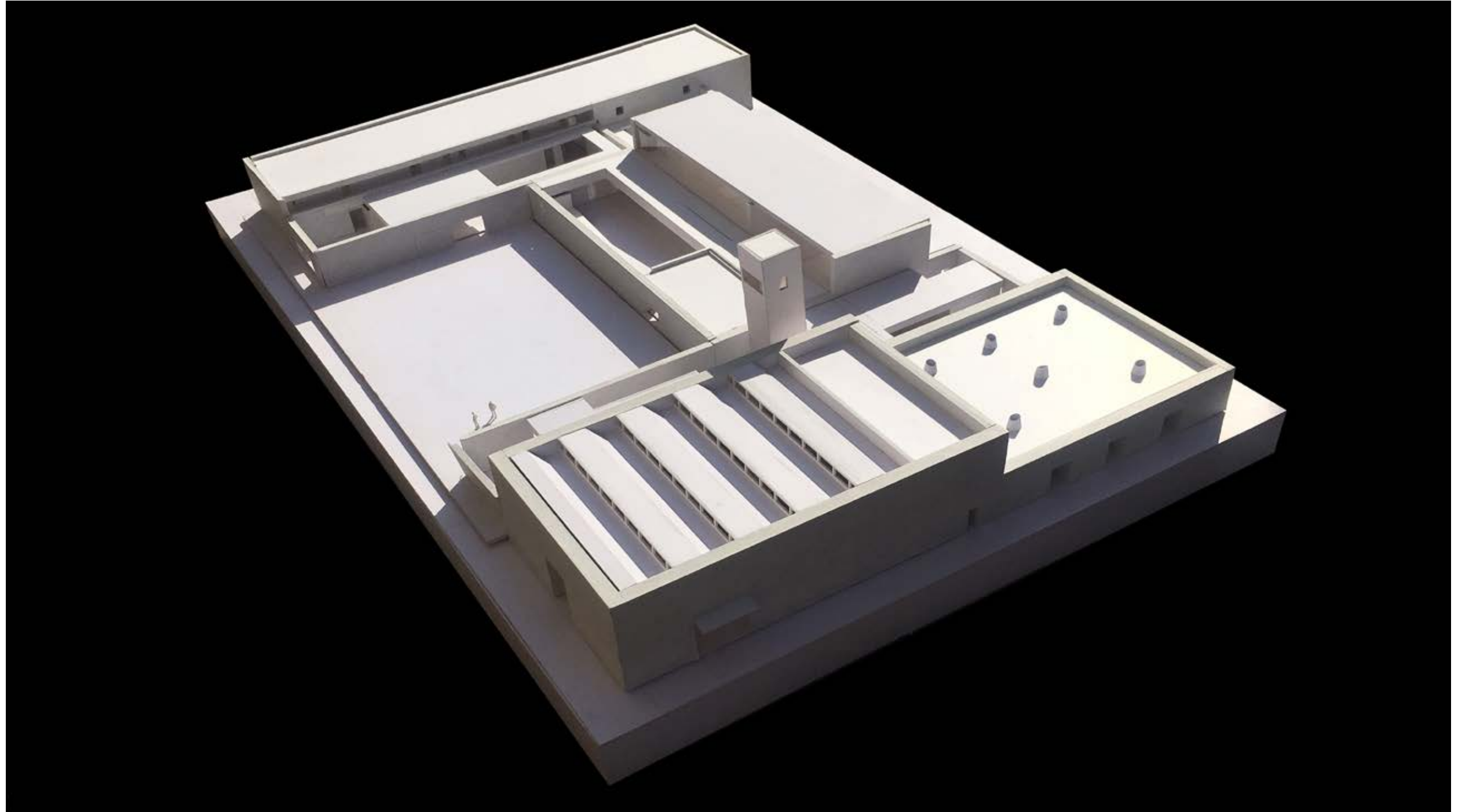
TEAM: Six people.

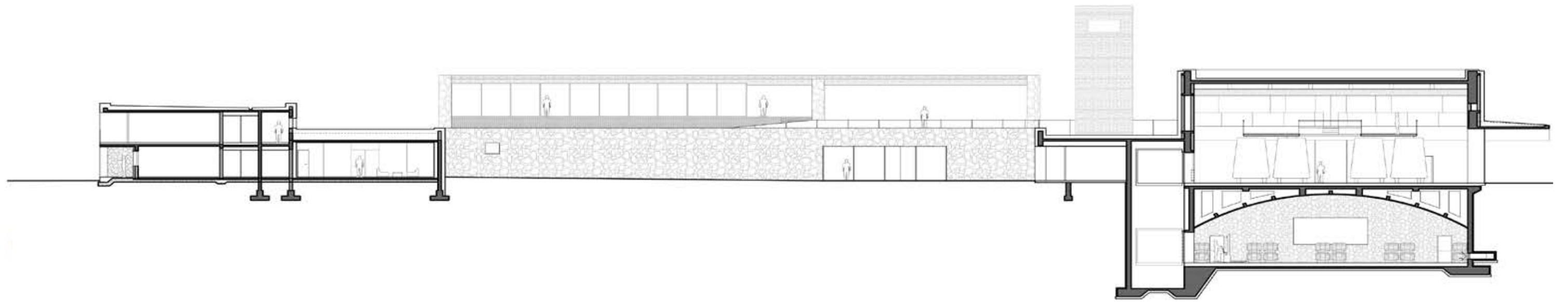
ROLE: Architect from concept to the beginning of design development.

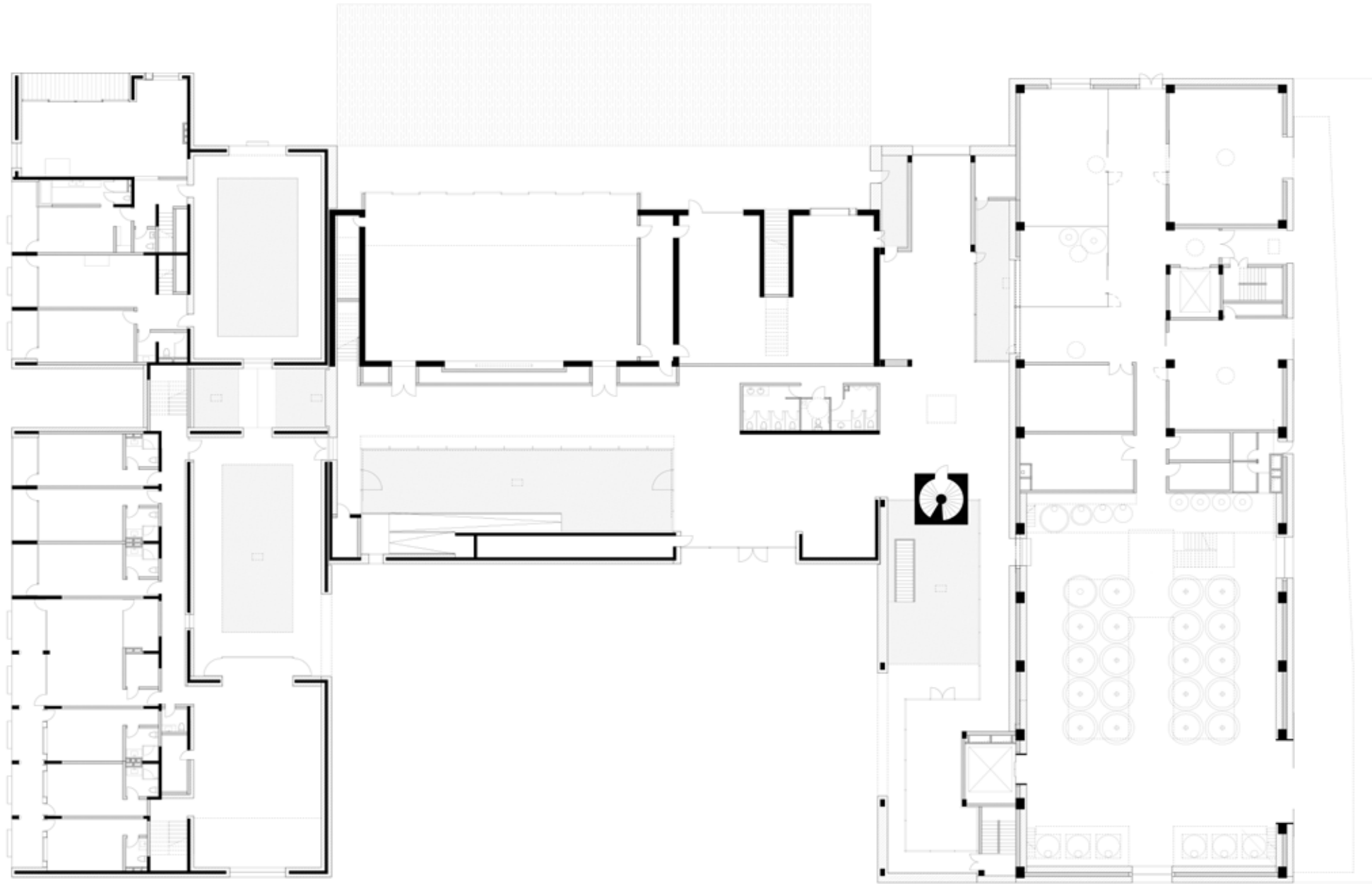
STATUS: Under construction.

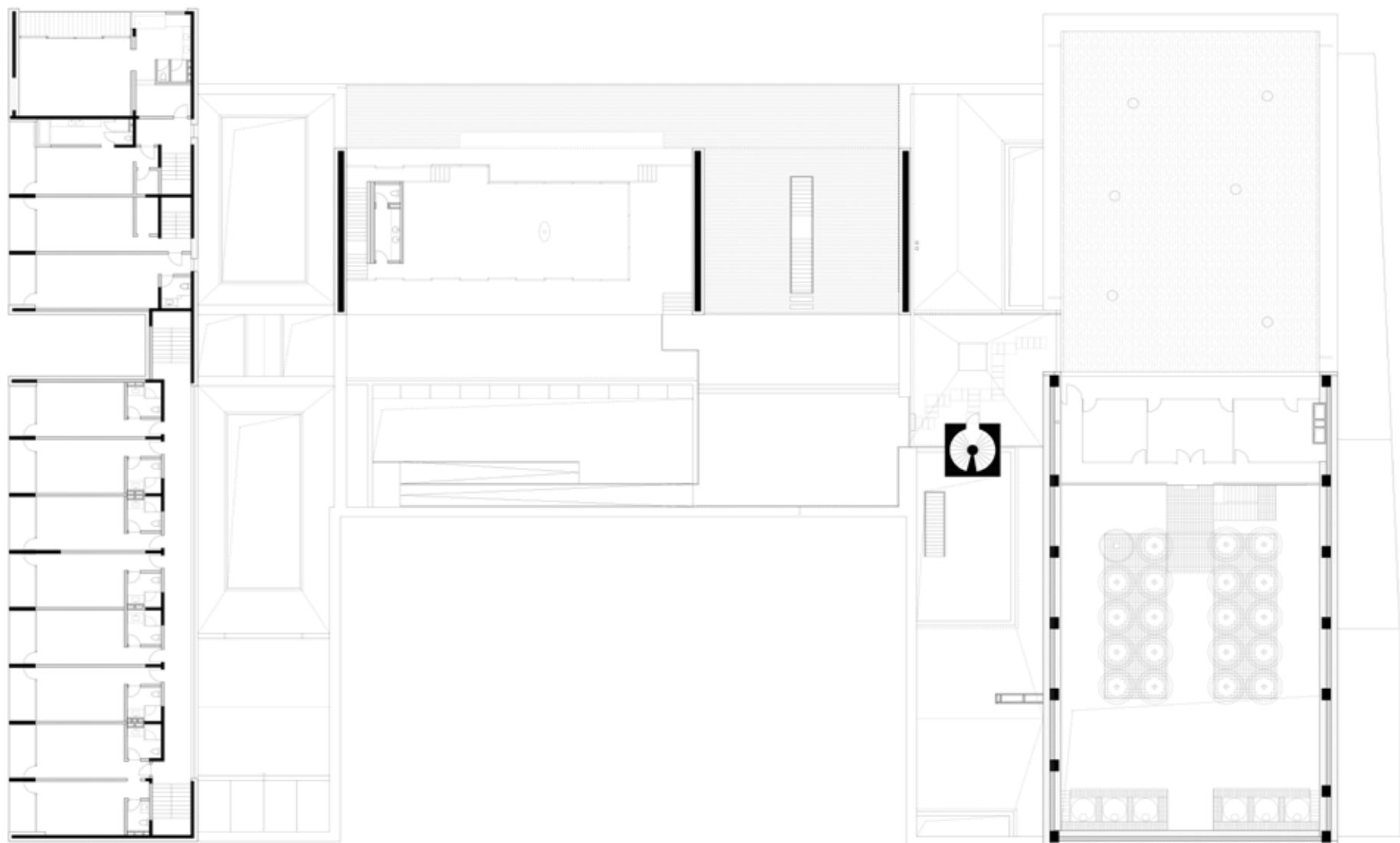
TASKS: CONCEPT & SCHEMATIC DESIGN DEVELOPMENT
PHYSICAL MODELS CONSTRUCTION AND SUPERVISION.

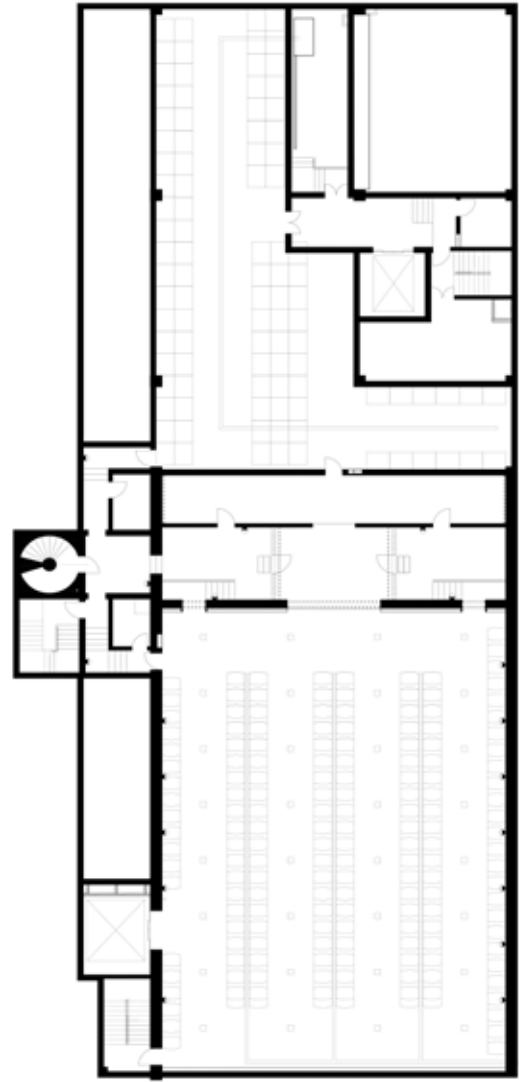






















Sandaoying Village

Chongli, Hebei province, CN

COMPANY: TRACE ARCHITECTURE OFFICE.

PROGRAM: Urban planning.

BUILT AREA: 82996,19 m².

TEAM: Six people.

ROLE: project Architect from concept to schematic design

STATUS: Under approval procedure.

TASKS: URBANISTIC CONCEPT DEVELOPMENT
HOUSING TYPOLOGY DEVELOPMENT
RENDERS SUPERVISION.





Vanke offices

Vanke employ apartments

Mountain apartments

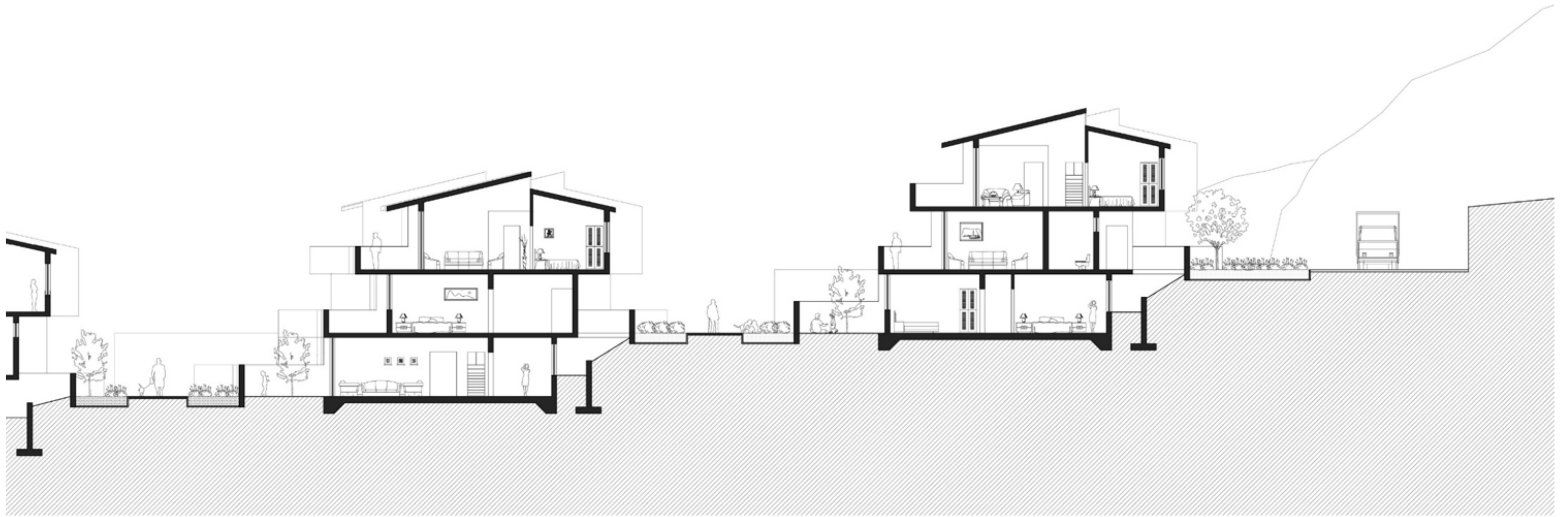
Village committee

Village library

Houses

Studio apartments

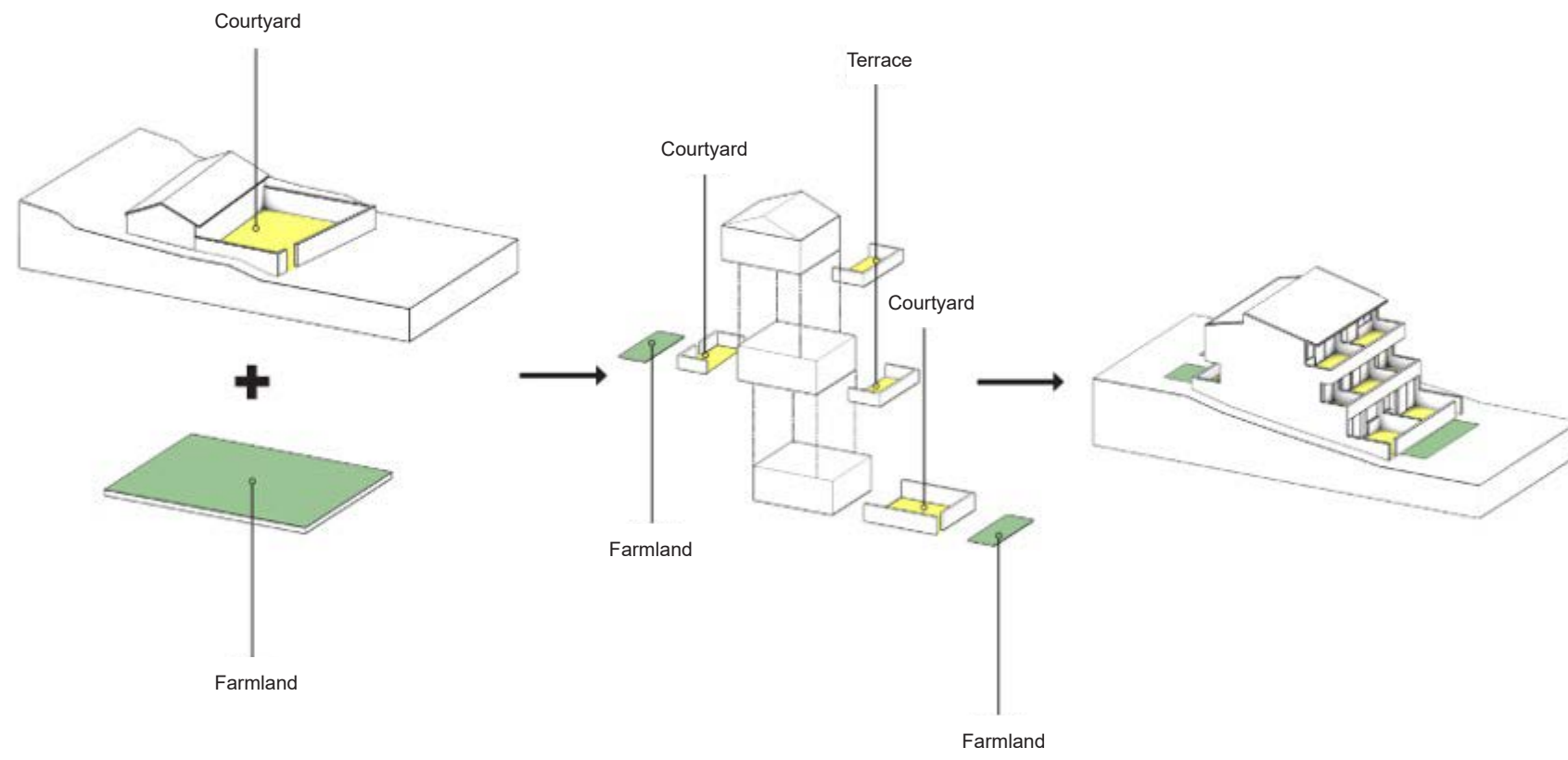




0 5m 10m

TRADITIONAL LOCAL SETTLEMENT

NEW SETTLEMENT





Eton Kids Kindergarten

Foshan, CN

COMPANY: ARKA.

PROGRAM: Educational/Interior/Re-use/Furniture design.

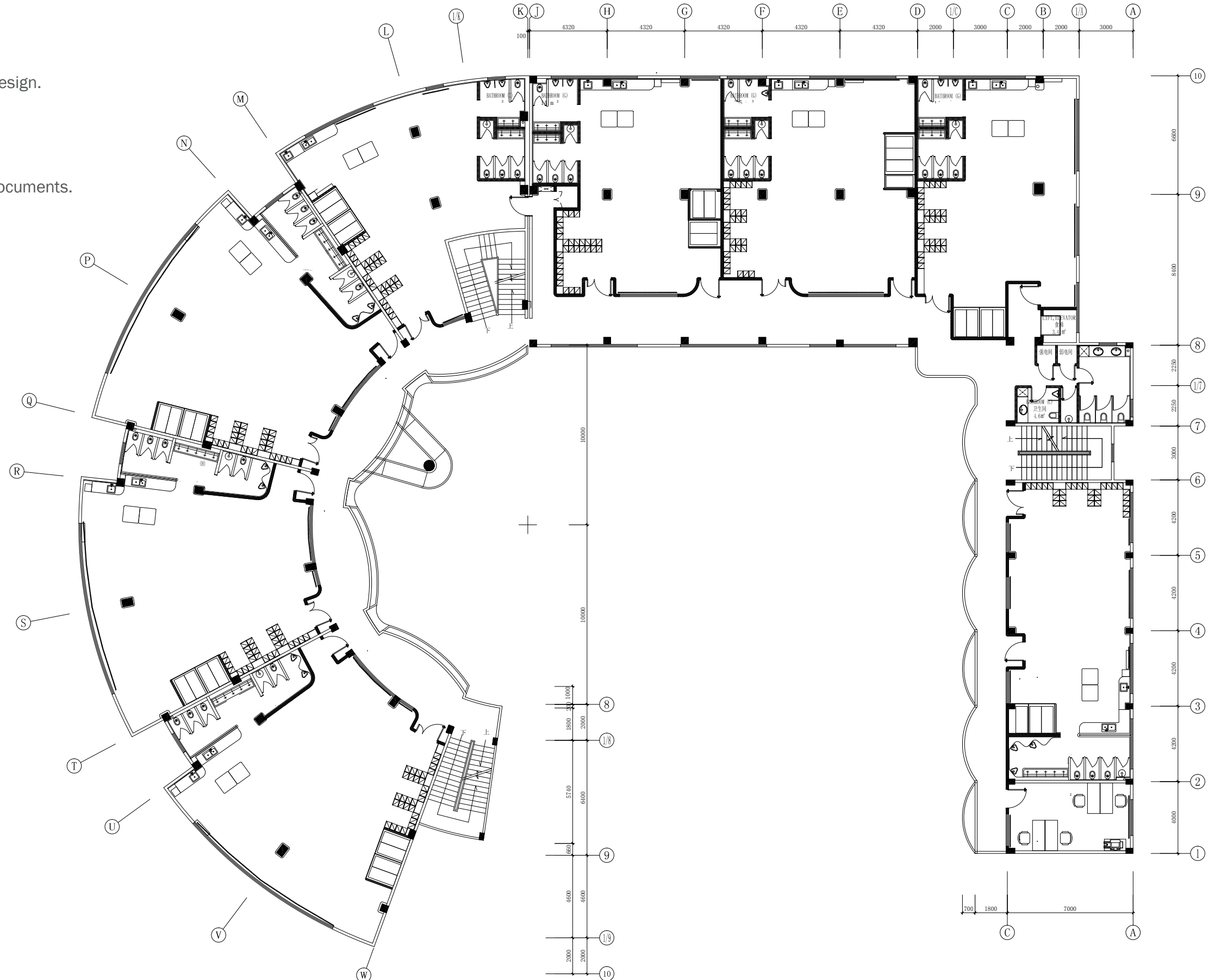
BUILT AREA: 6800 m².

TEAM: Three people.

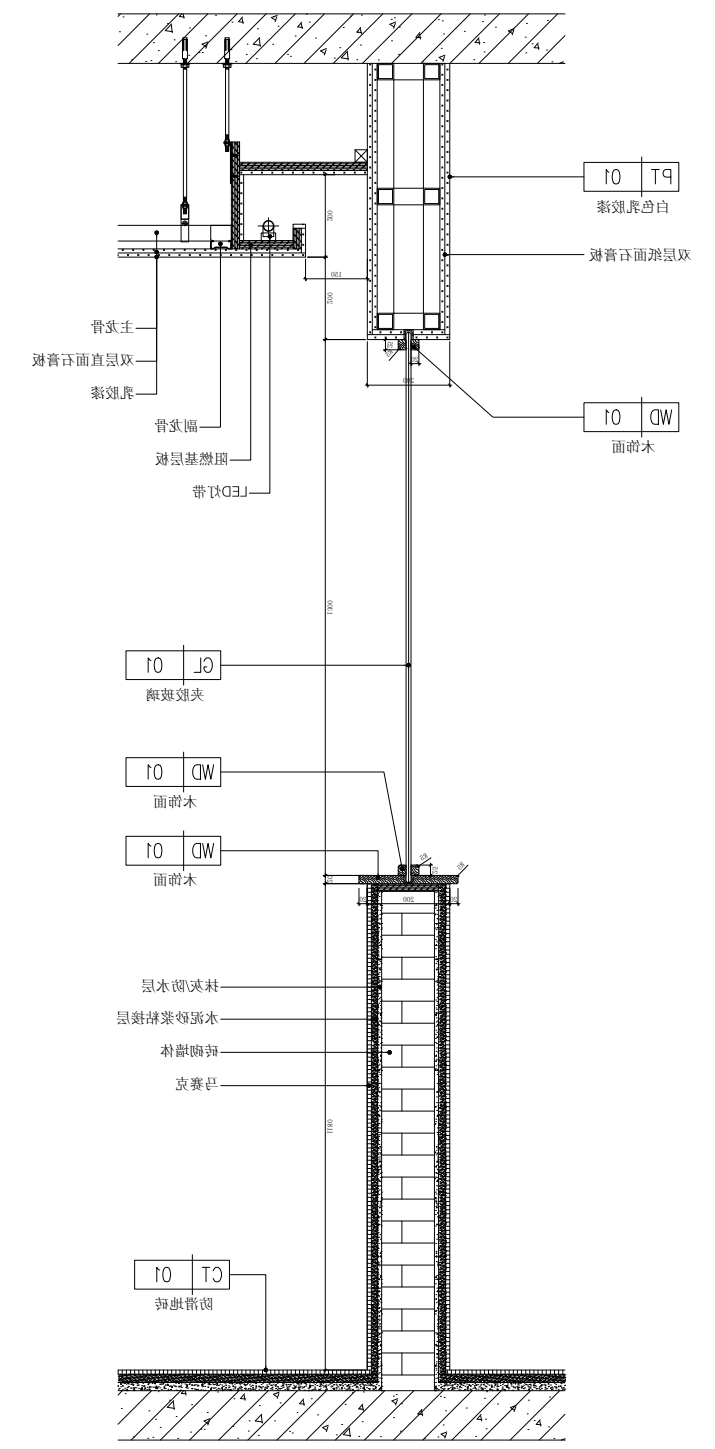
ROLE: Architect from concept to construction documents.

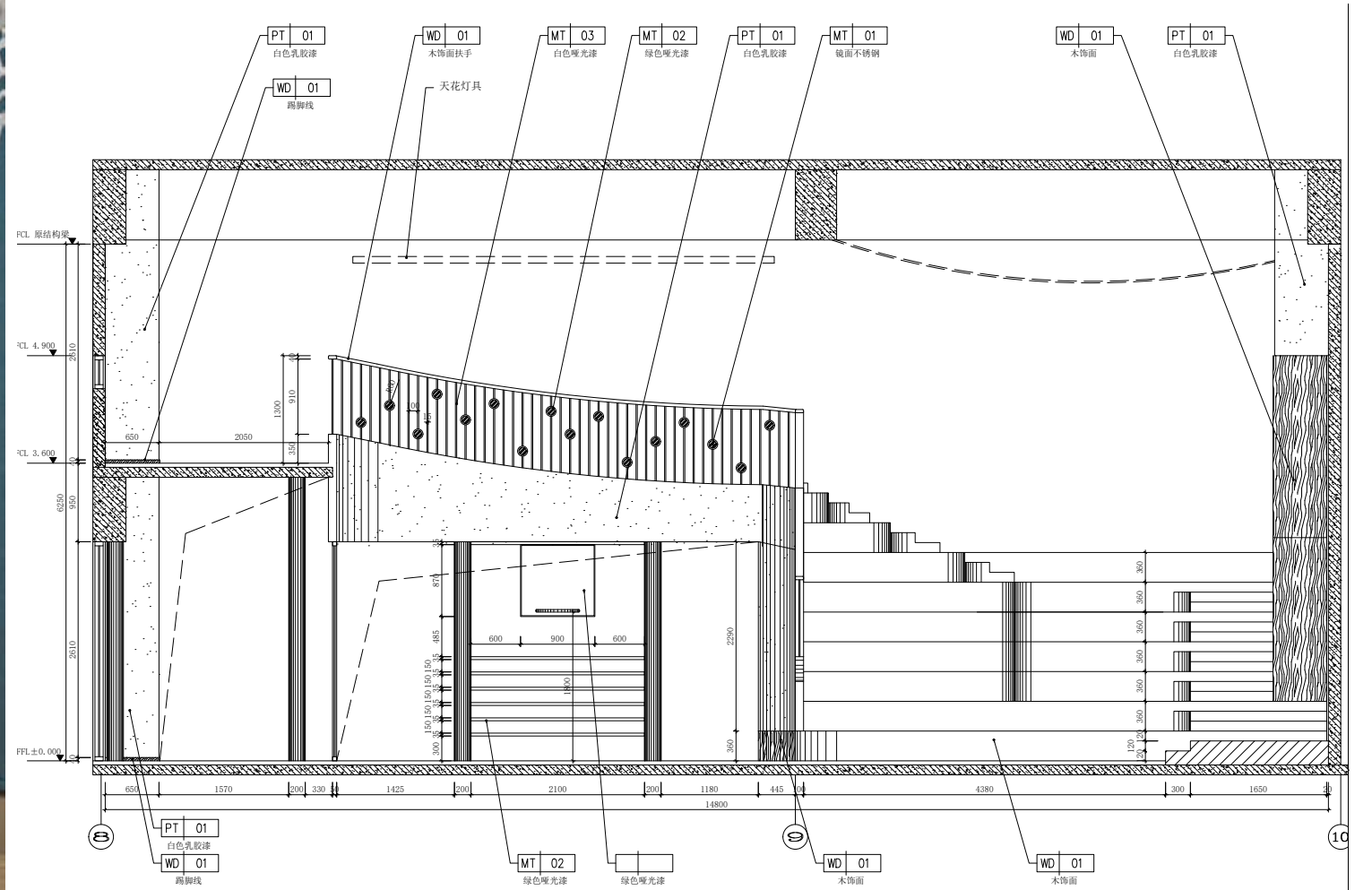
STATUS: Ongoing.

TASKS: BUBBLE LAYOUT DESIGN
INTERIOR SPACE DESIGN
CONSTRUCTION DRAWINGS.









C7 Multifunctional office building

Beijing, CN

COMPANY: ARKA.

PROGRAM: Office/Interior.

BUILT AREA: 8860 m².

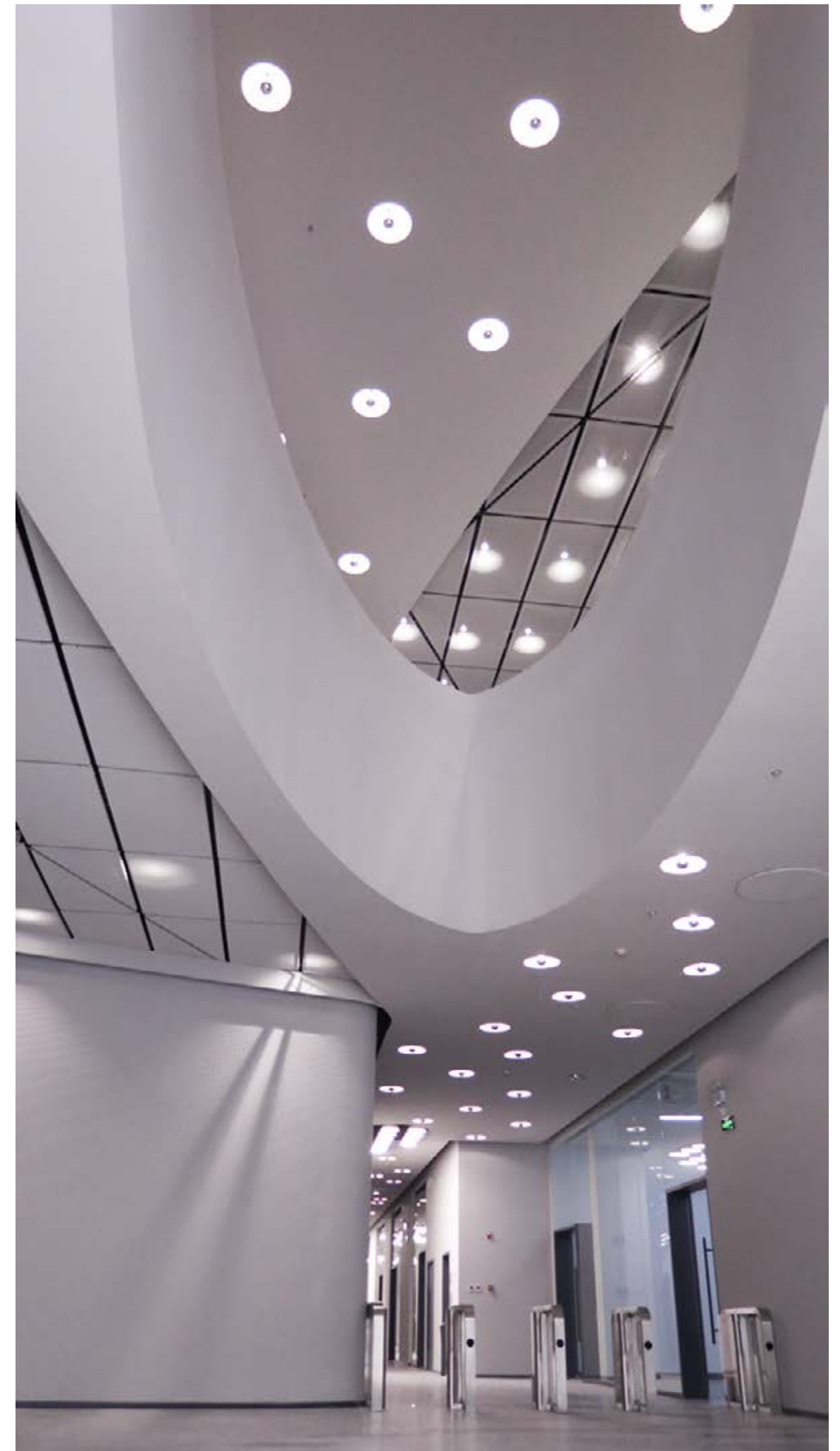
TEAM: Five people.

ROLE: Architect for construction documents and construction administration.

STATUS: Built

TASKS: INTERIOR SPACE DESIGN

CONSTRUCTION SITE ARCHITECT (supervision of construction quality).







Basilica of S. Andrea Mantua

Mantua, IT

COMPANY: PAOLO ZARMANI ASSOCIATI.

PROGRAM: Architectonical and liturgical renovation.

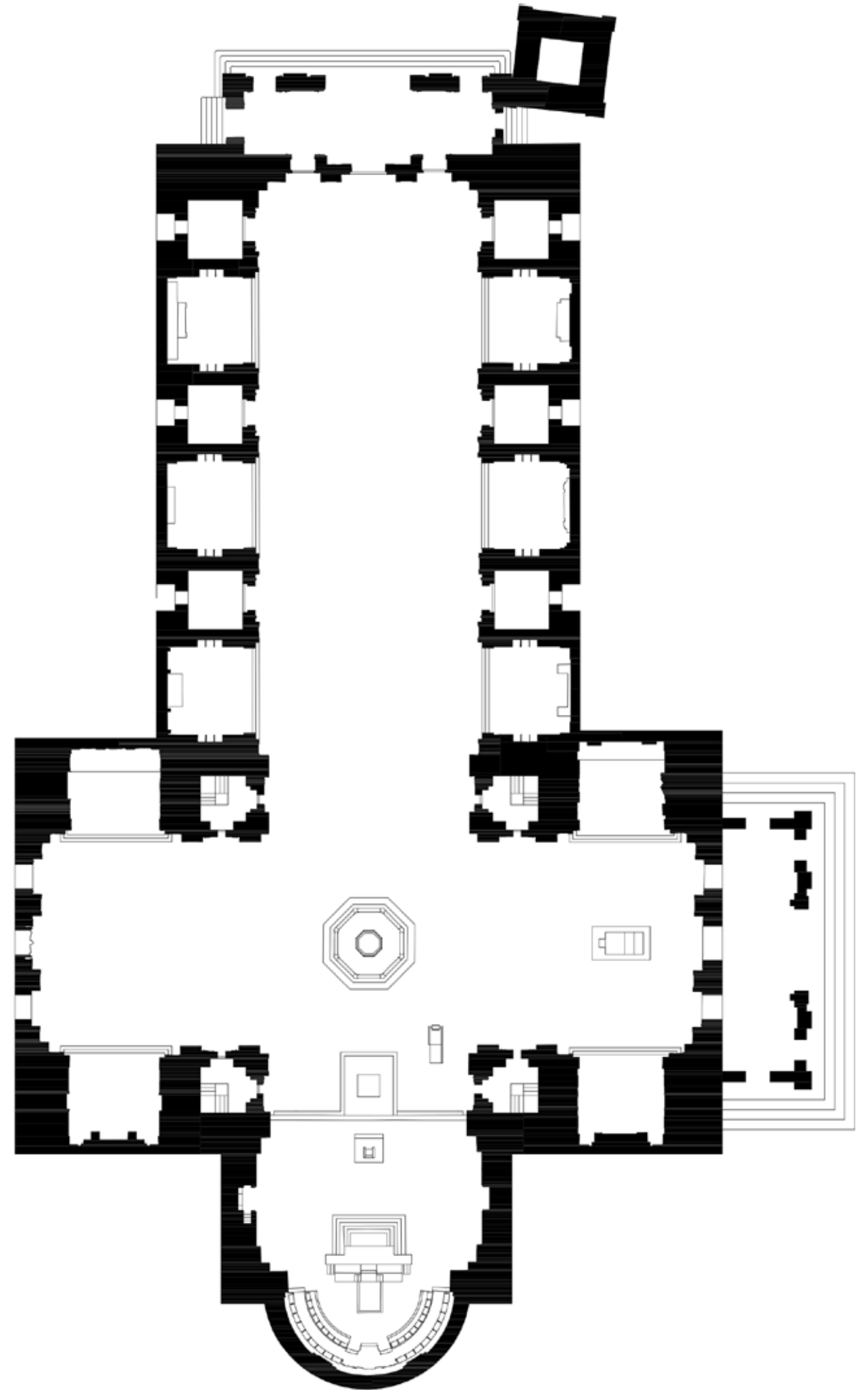
BUILT AREA: 28000 m².

TEAM: Three people.

ROLE: Junior Architect.

STATUS: Built.

TASKS: RENDERS IMAGES
LAYOUT DRAWINGS.





Hong Kong, Sogo

HK.

COMPANY: DAVID CHIPPERFIELD ARCHITECTS.

PROGRAM: Retail.

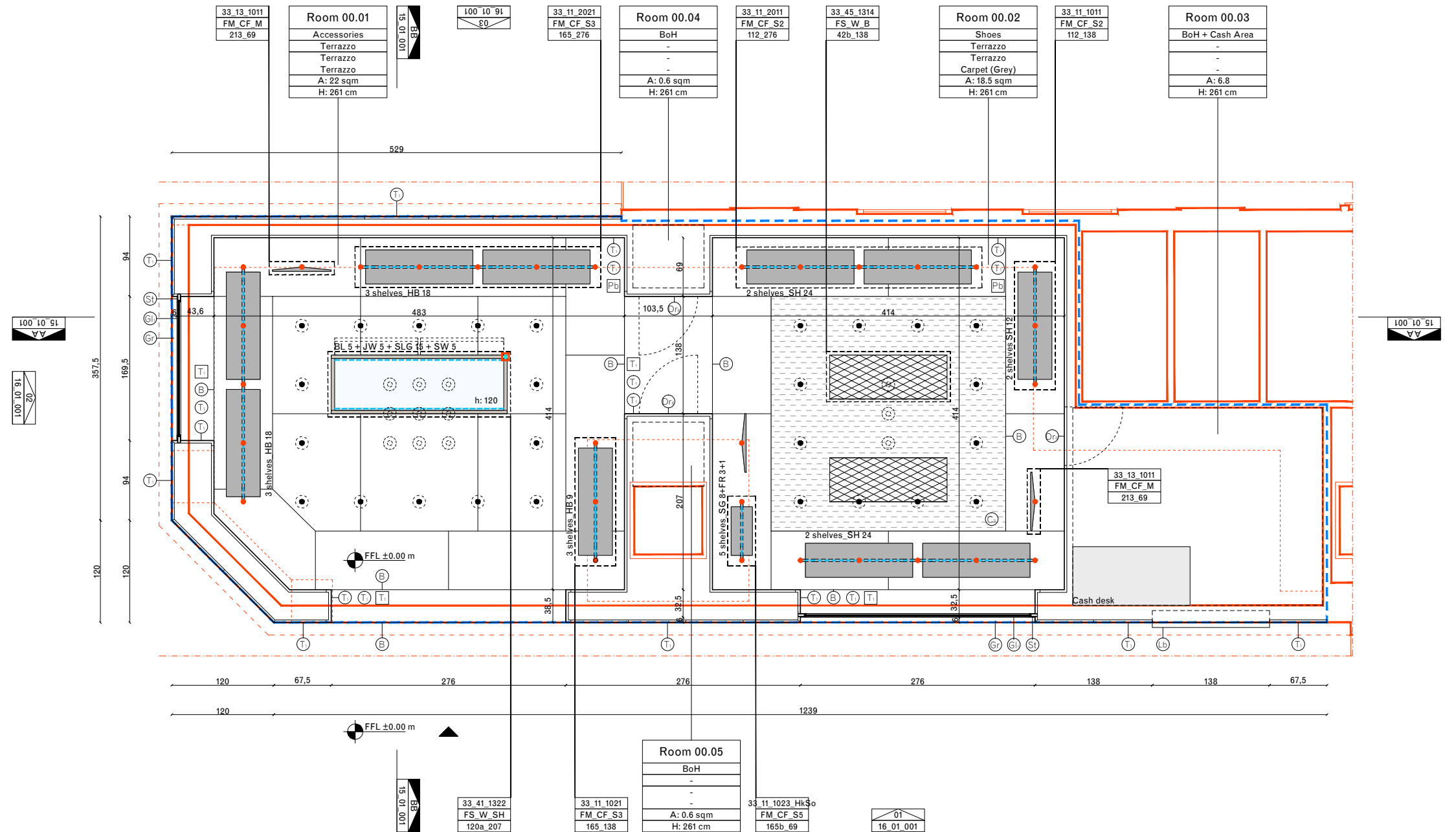
BUILT AREA: 100 m².

TEAM: Three people.

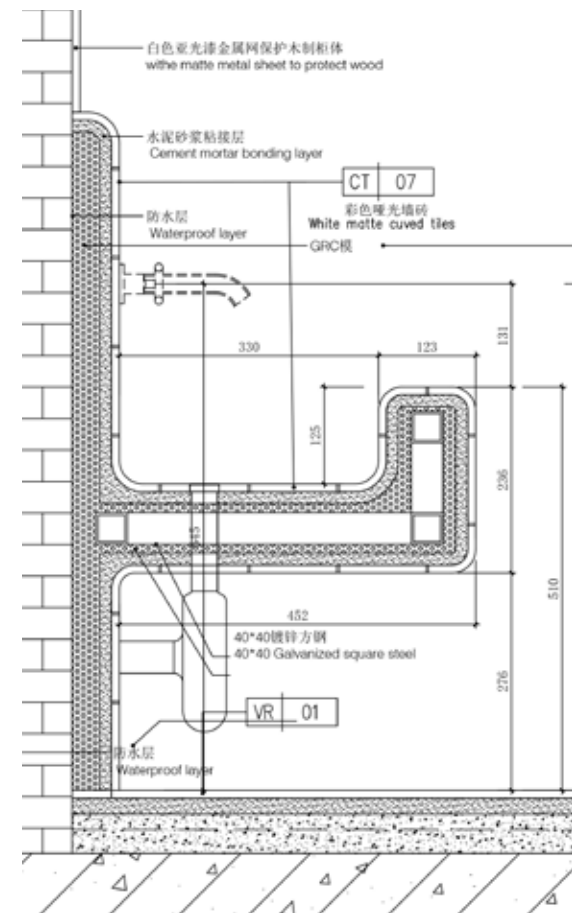
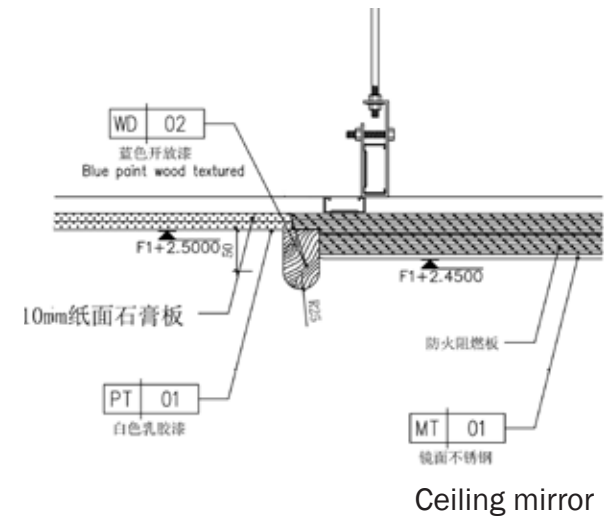
ROLE: Junior Architect.

STATUS: Built.

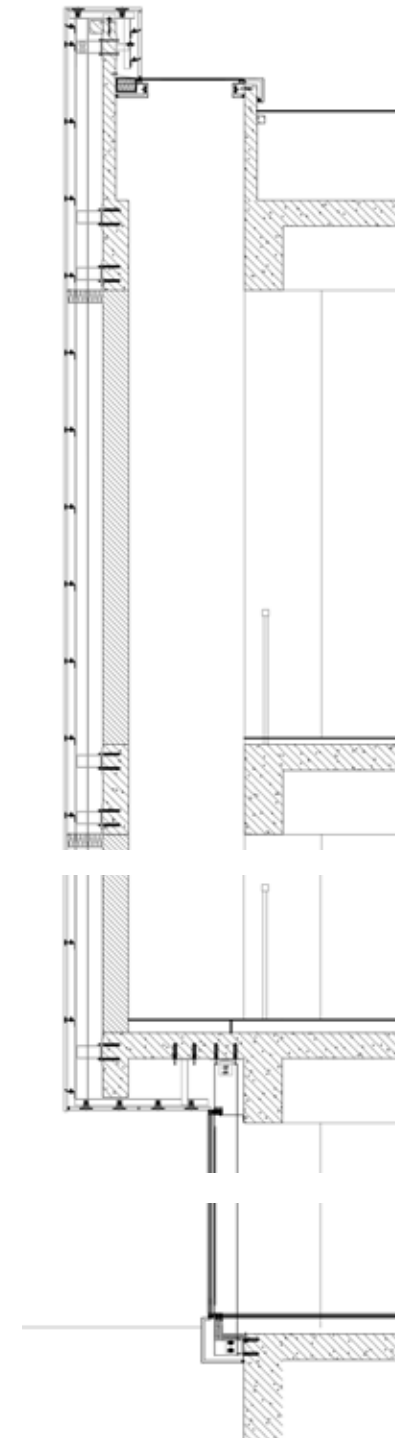
TASKS: CAD DRAWINGS.



DETAILS FROM VARIOUS PROJECTS



Kids art room sink



Facade with stone cladding