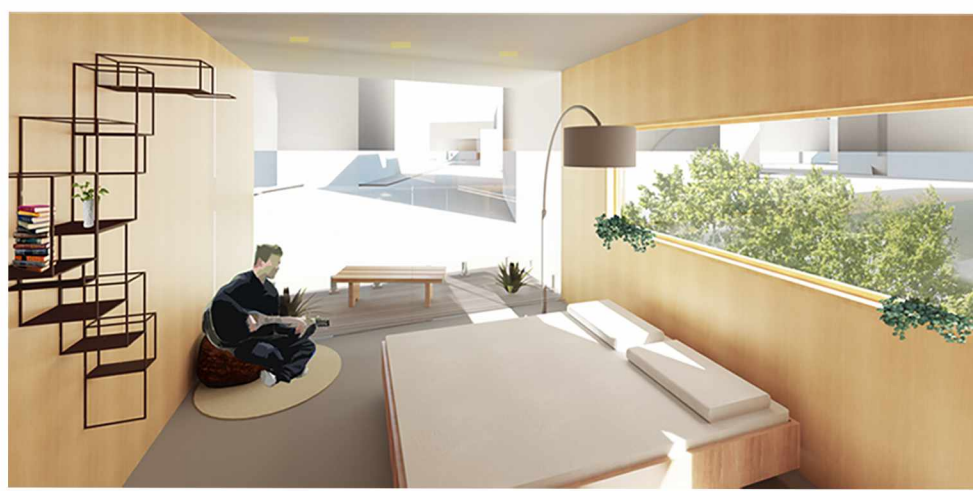


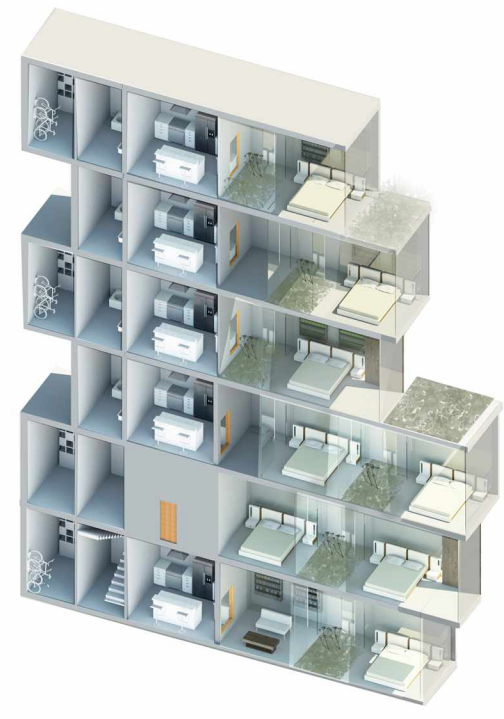
- WORK SAMPLES -



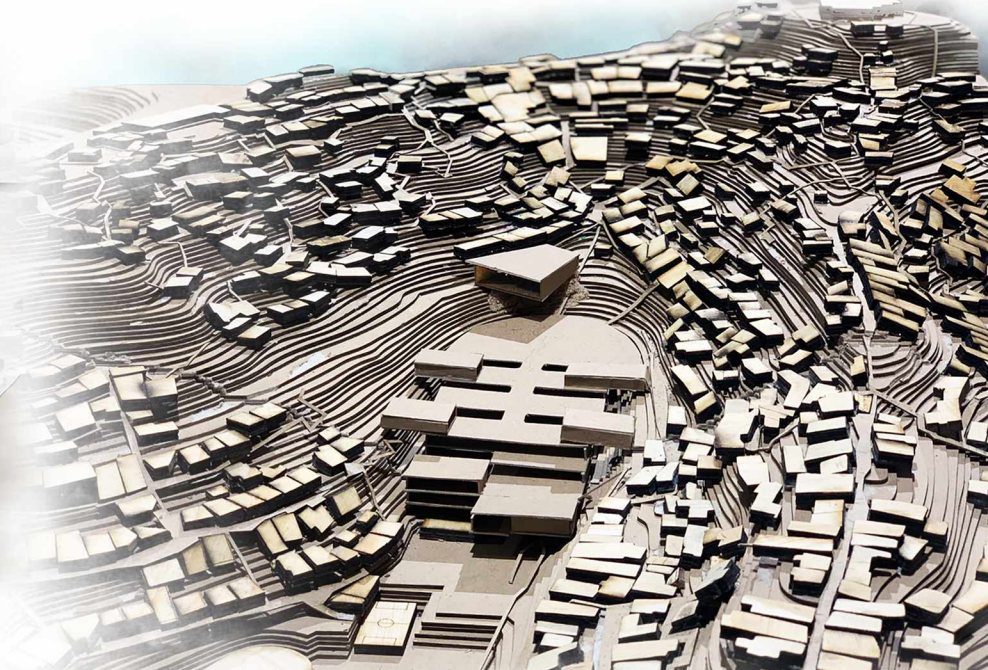
Culinary school (Comprehensive studio) - Invented sustainable facade, Exterior perspective created in Revit and Autocad, render by Photoshop



Urban Living (Berlin studio)- Design an affordable housing and community, Interior perspective and furniture drew by Rhino and Revit



Boston University Residential Housing- Create a new experience on a multitude of vertical and horizontal levels, Perspective and section drew by Revit



Informal settlement (La Charneca)- Brought all neighbors into the center by using garden method, Drew the model in Sketchup/ Revit, Physical model chipboard