

WHITNEY YEOW CHONG

portfolio 2018 - 2020

Coburg City Oval

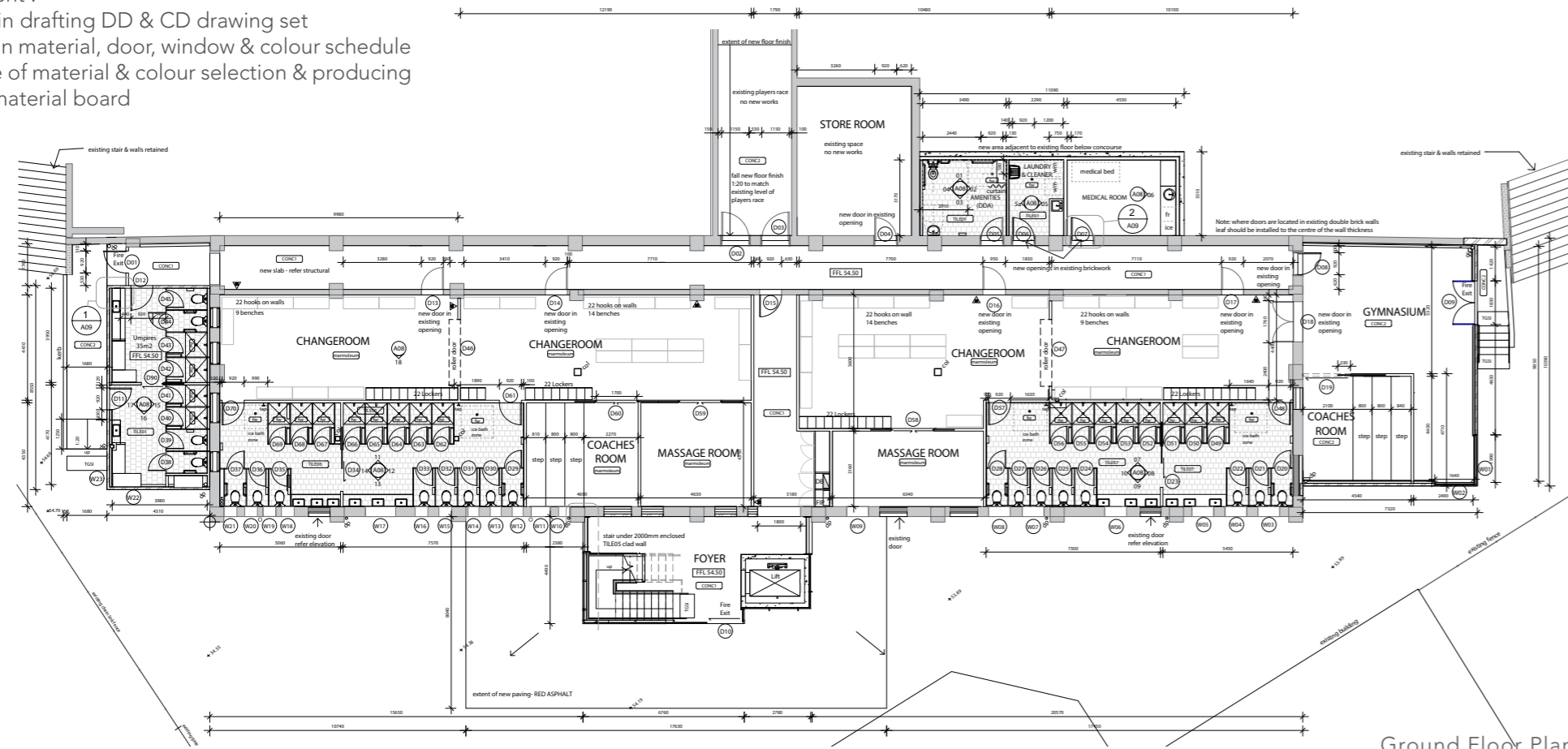
Antartica Architects

Coburg City Oval is a redevelopment project by the Moreland City Council. The project includes the refurbishment and extension of their existing grandstand to be compliant to current standards and meet the needs of current and future sporting facilities. The complete refurbishment includes a social space at the upper level, new changerooms, gym, medical room, bathrooms, and a new concourse.

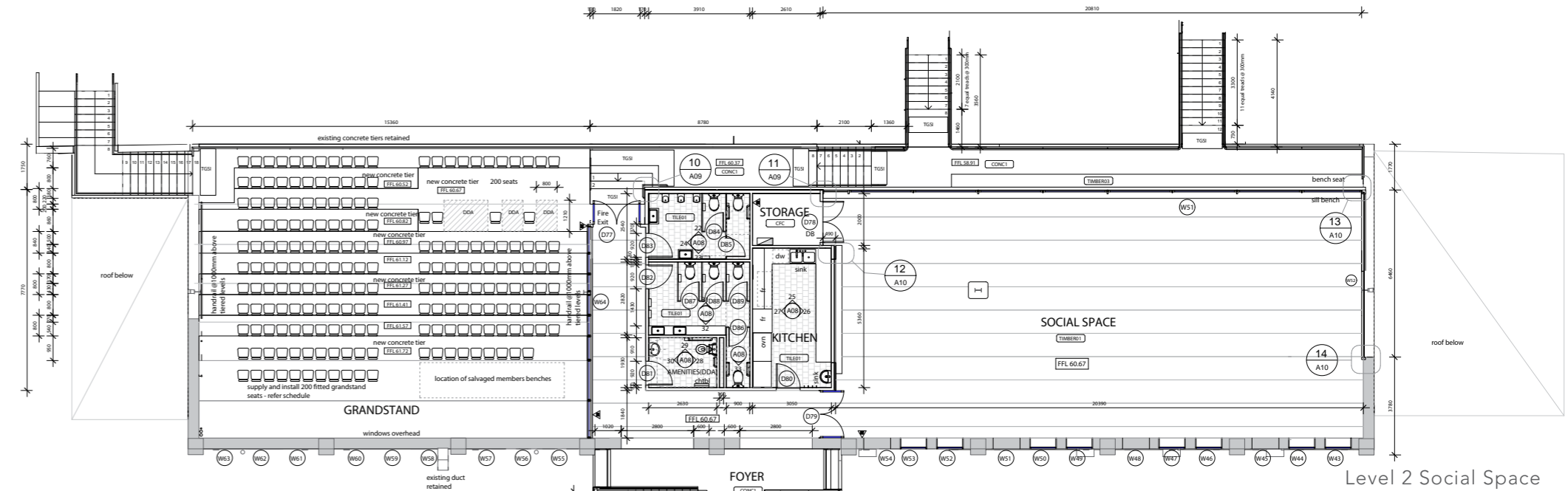
Stage: Contract Documentation

Involvement :

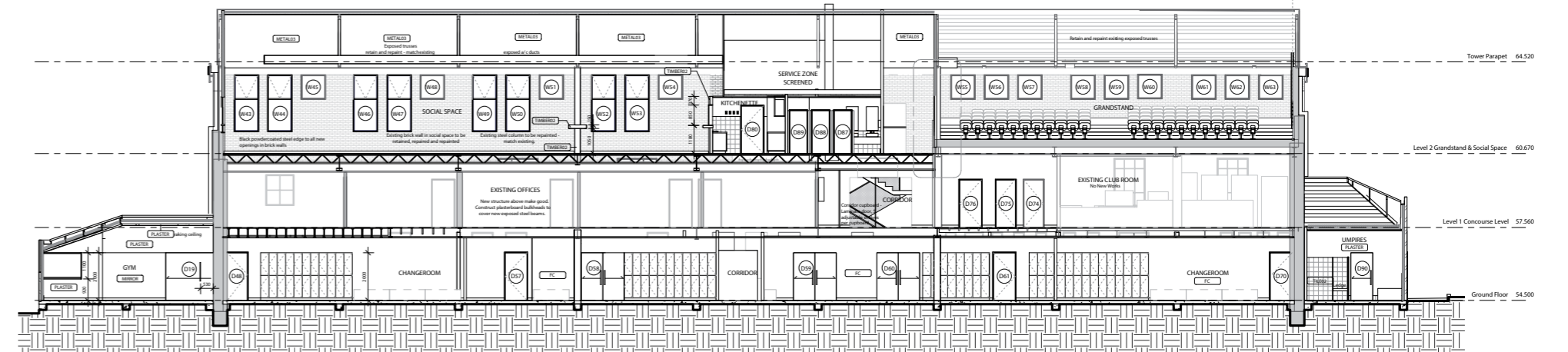
- assisted in drafting DD & CD drawing set
- assisted in material, door, window & colour schedule
- in charge of material & colour selection & producing physical material board



Ground Floor Plan



Level 2 Social Space



Section

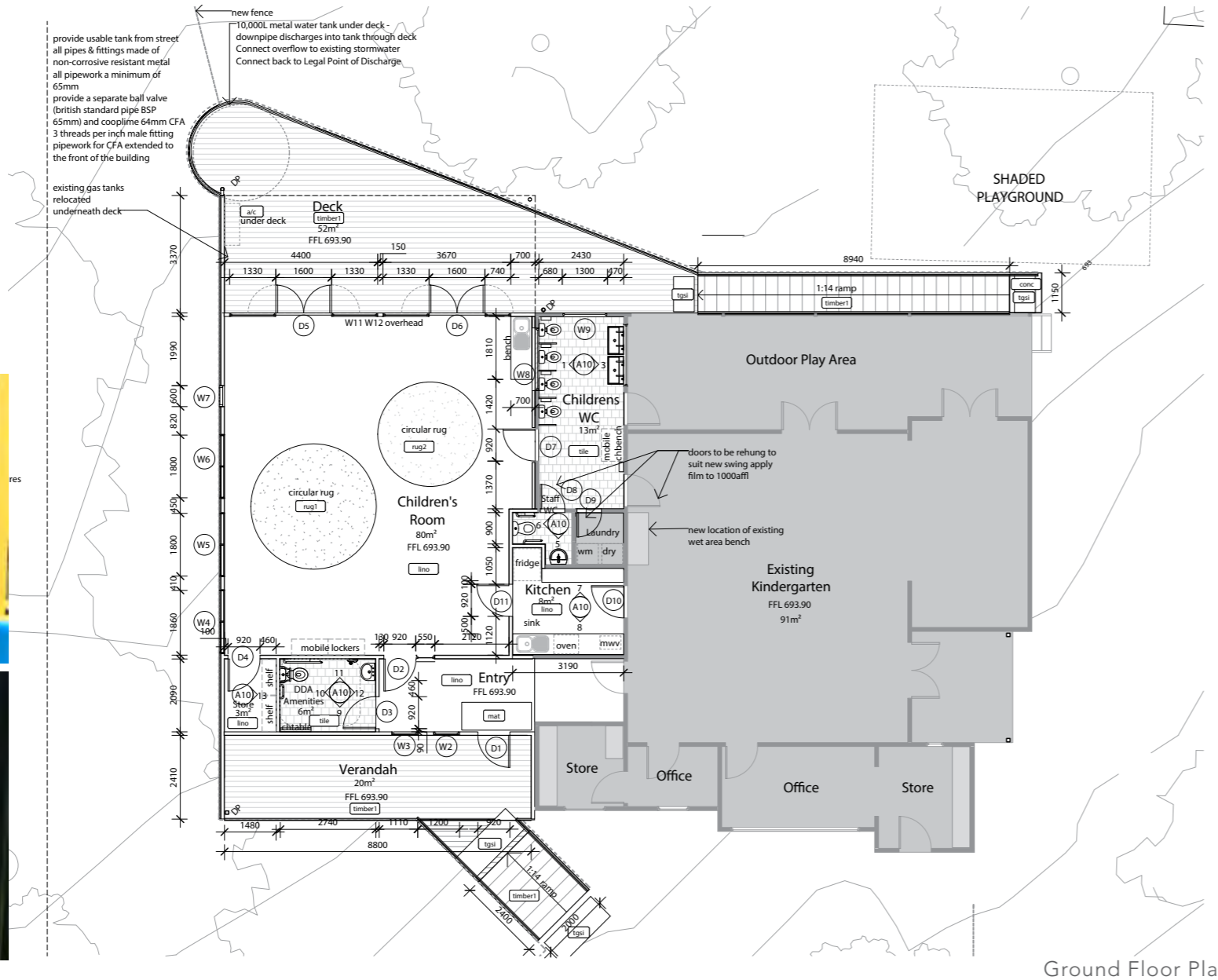
Trentham Childcare

Antartica Architects

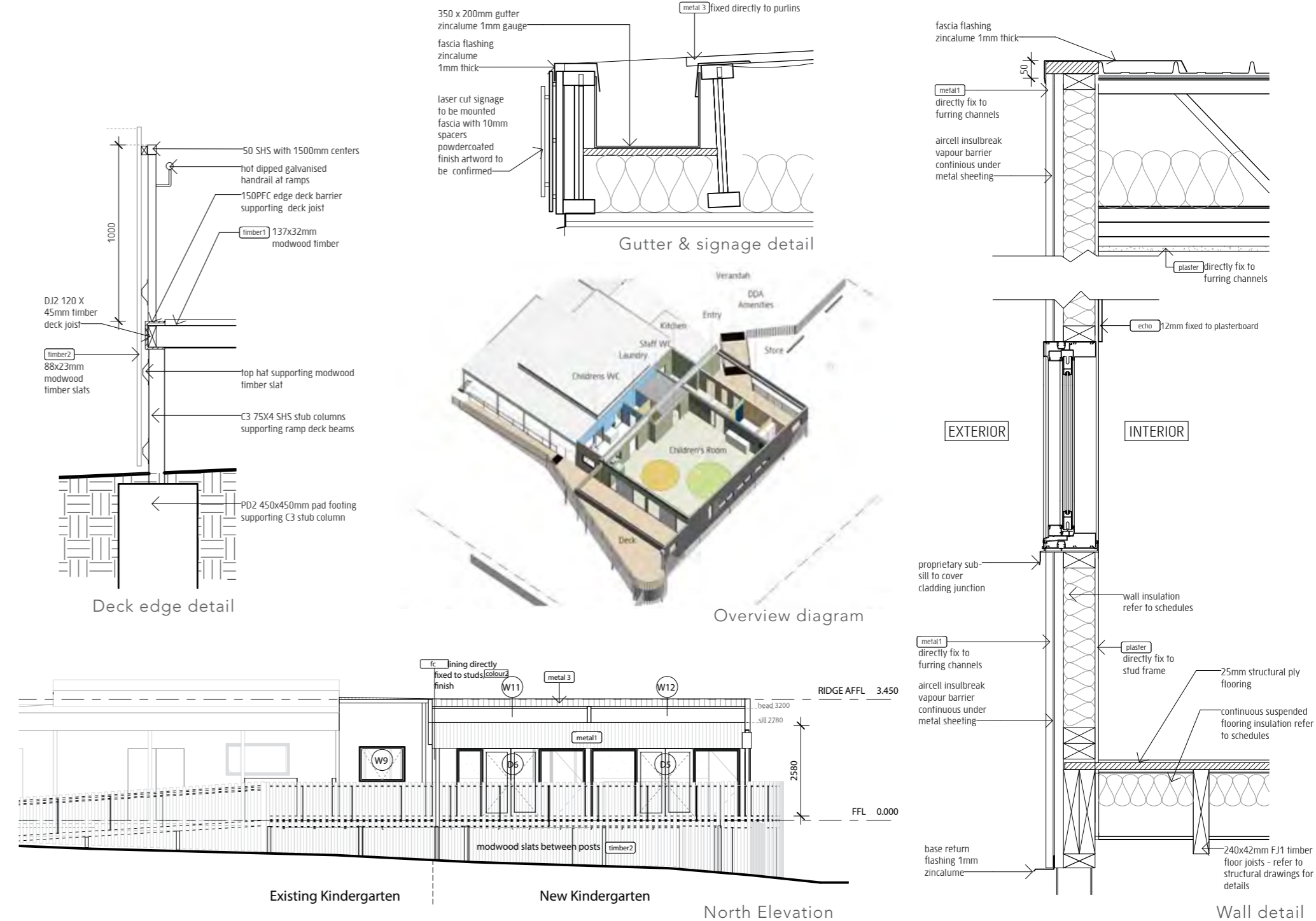
This project is an extension of a new childcare center to the current existing Trentham kindergarten. The new extension consists of a 24 children play space, refurbishment of a new kitchen and children bathrooms.

Stage: Contract Documentation
Involvement:
-produced whole CD drawing set under supervision of Directors
-material selection
-engage with consultants

Existing Kindergarten



Ground Floor Plan



Existing Kindergarten New Kindergarten North Elevation

Wall detail

Regional Community(Kerang) Wellbeing Hub

Antartica Architects



Entry from street



View of water tower



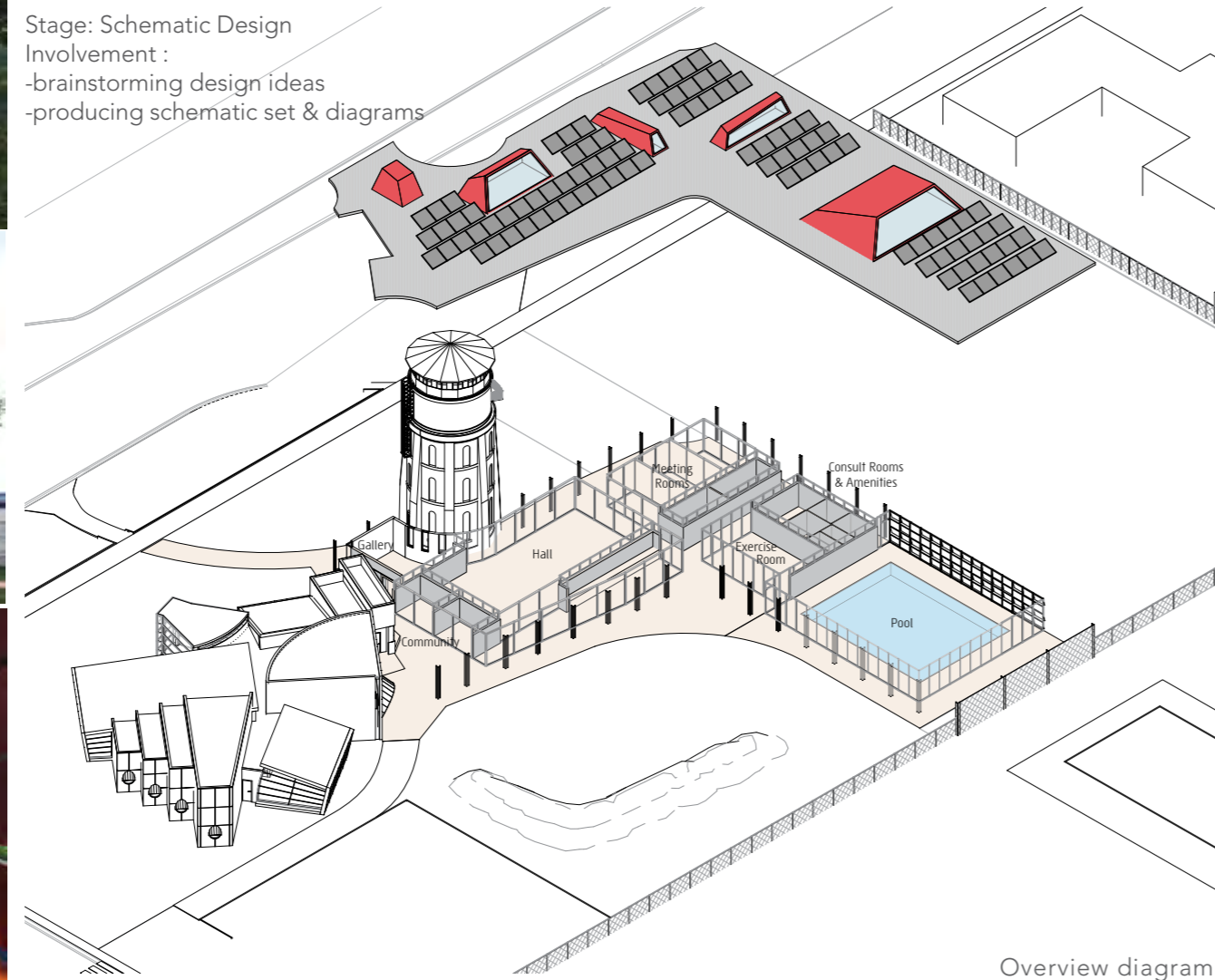
New indoor pool

Sir John Gordon Pavilion is designed as a new community center in Kerang. The project follows on from 2 master plans in the areas and is strategically located as a building to connect several council facilities including the library, the pool and the memorial hall. The building is conceived as an elongated veranda with a series of flexible operable pavilions inserted under the roof.

Stage: Schematic Design

Involvement :

- brainstorming design ideas
- producing schematic set & diagrams

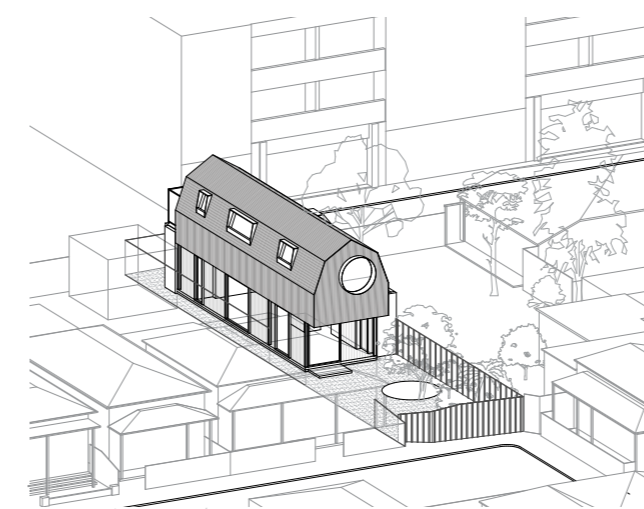


Overview diagram

Windsor Castle

Antartica Architects

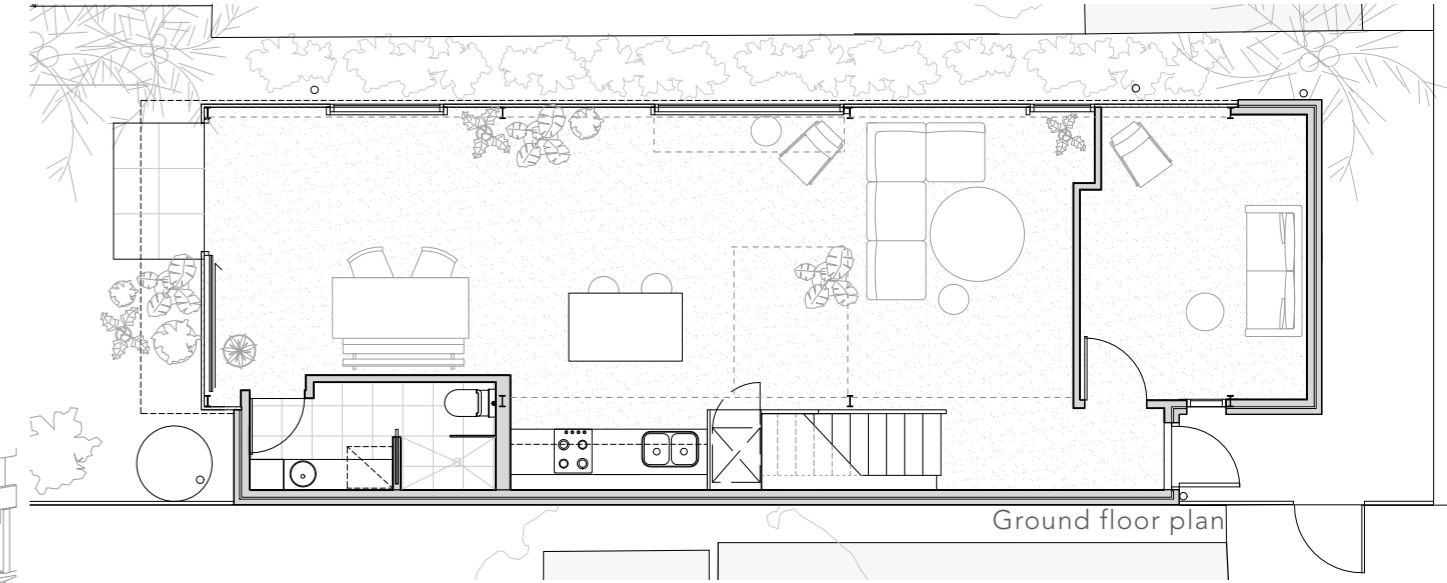
Windsor Castle is a submission to the 2020 Australian Institute of Architects Awards. I have assisted in producing presentation drawings and managed the timeline & requirements for submission.



Axonometric overview



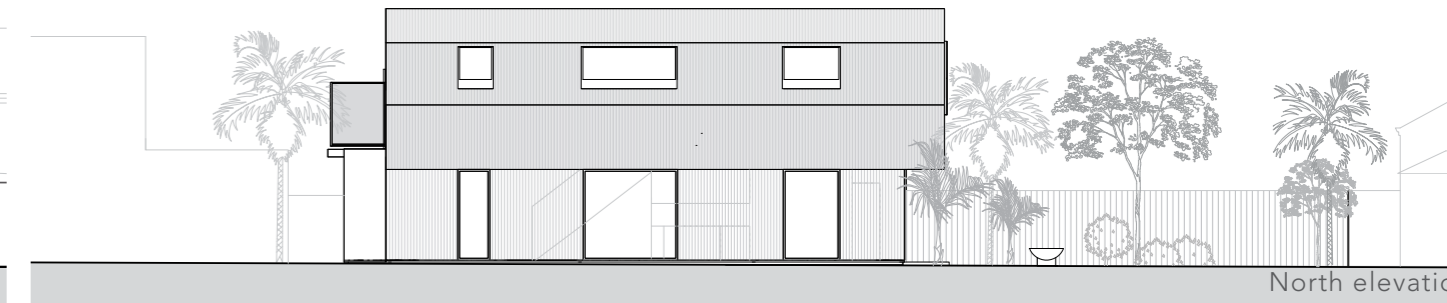
East elevation



Ground floor plan



West elevation



North elevation

Pet City Docklands

RMIT Major Project

The small, dense and temporary

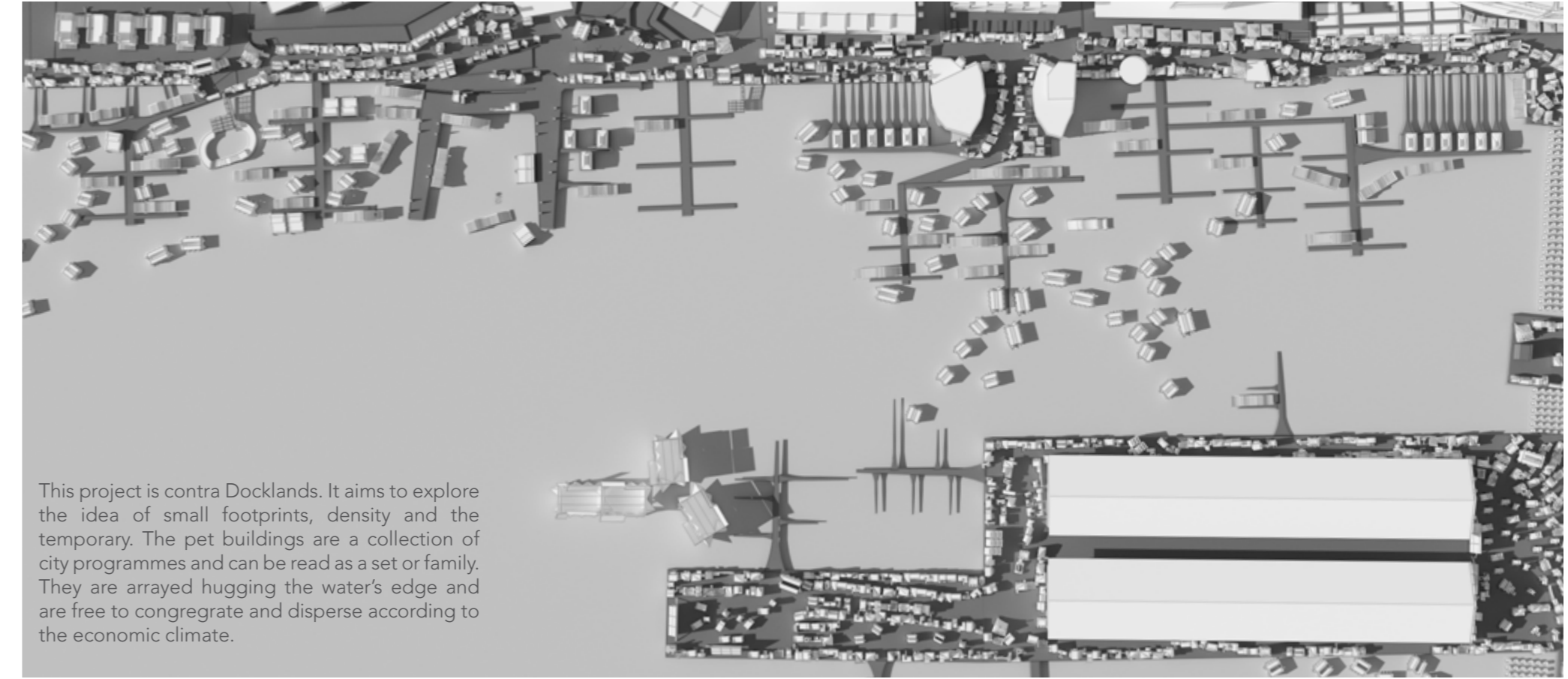


Existing site conditions

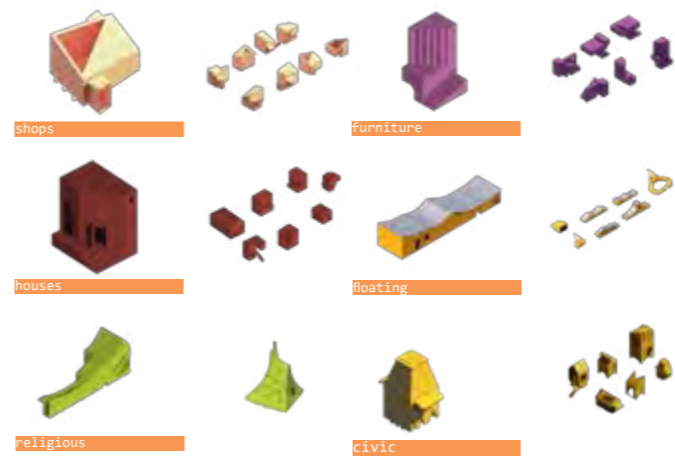
.....What if ?



Overview of Docklands with 'pets'



This project is contra Docklands. It aims to explore the idea of small footprints, density and the temporary. The pet buildings are a collection of city programmes and can be read as a set or family. They are arrayed hugging the water's edge and are free to congregate and disperse according to the economic climate.



'Pets'