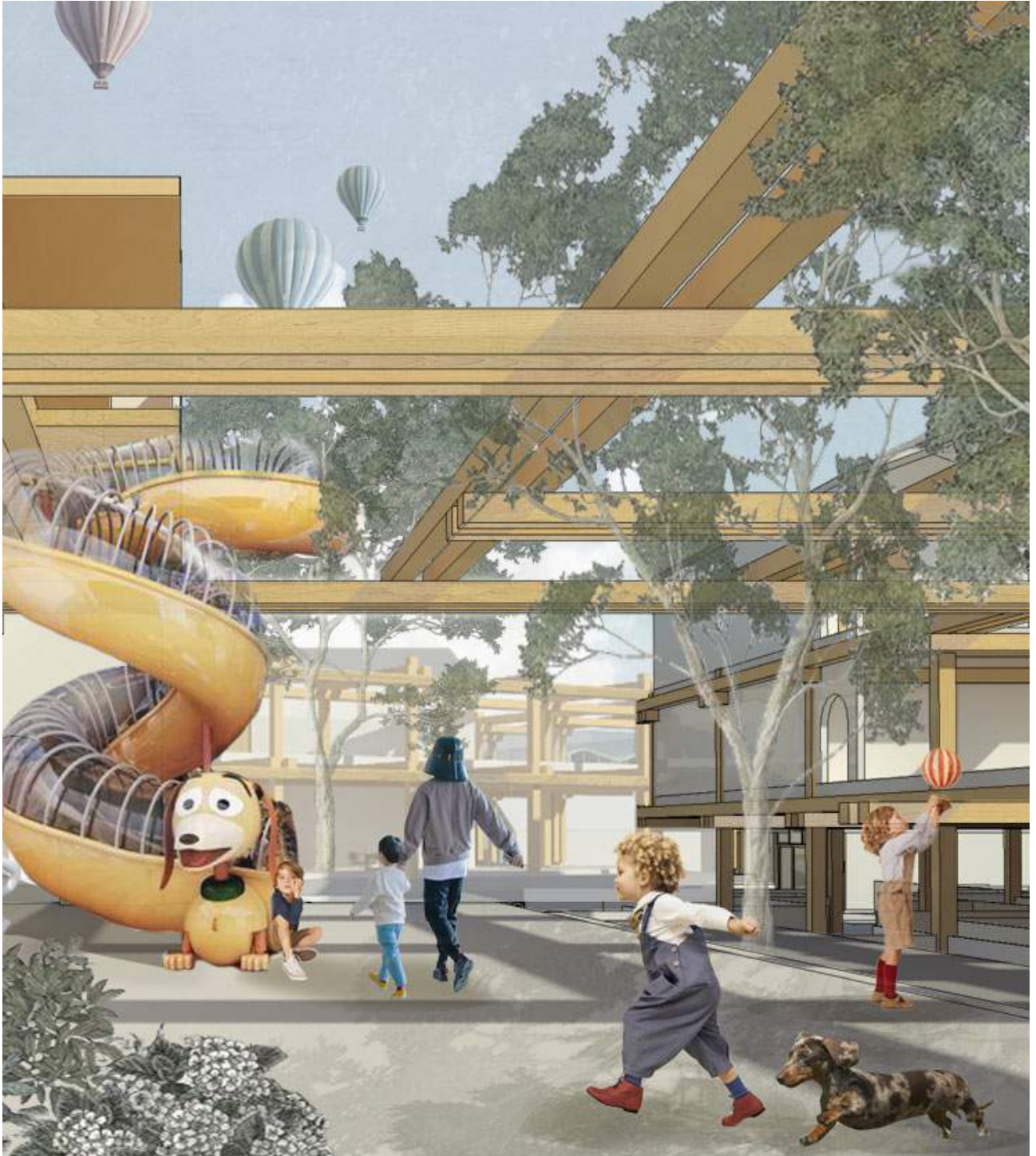


PORTFOLIO



— NICHA LEELATHANAPIPAT —
selected work from 2020-2022

CONTENTS

Bang Pu Children's Hospice

Bachelor Degree Thesis: Therapeutic architecture that serves as an integral part of the medical process.

01



NnY House Private Resident

23



YUMA Onsen Private Onsen

15



Flexi Bang Na High rise Condominium

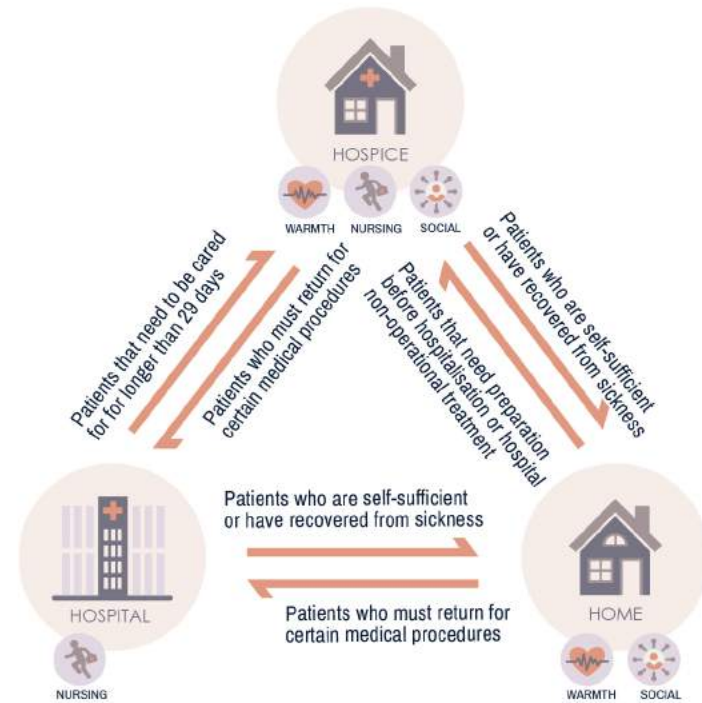
19





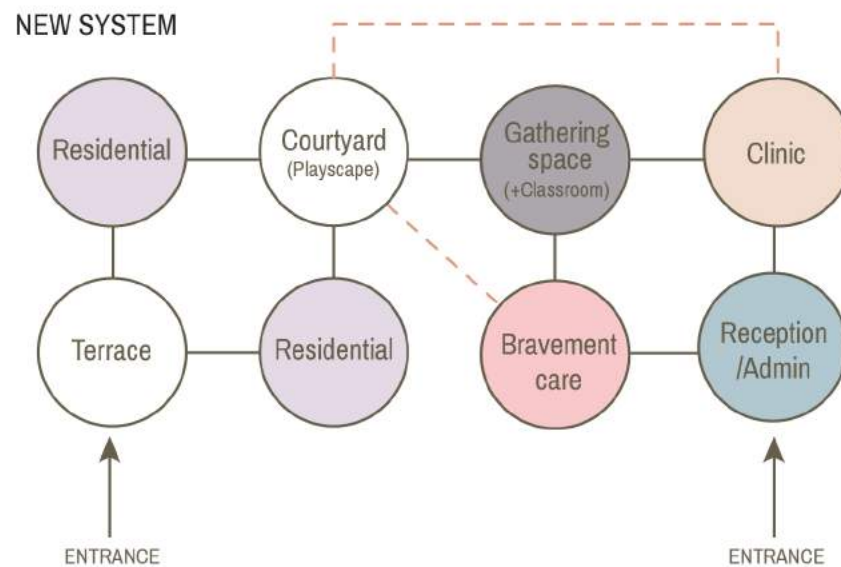
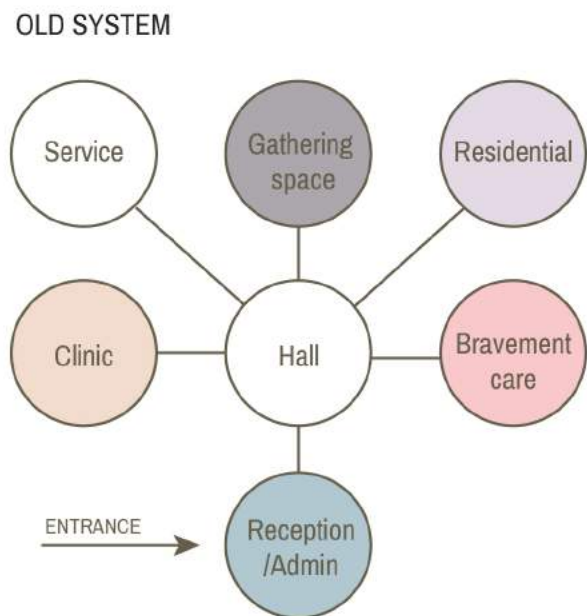
diagram
Locations for supporting palliative pediatric patients in Thailand

Case study showed that the pediatric palliative care system included children both inside and outside the country. So, I wanted to design a children's hospice that has complete access to hospital, school, housing, and emotional support center.



The system is separated into two parts by the intensity of the function. There are the living and housing area and the social interaction area. Architecture Placebo is used in the intersection of the areas to give patients a sense of freedom of using the areas without separating them from the hall. Patients must be unaware that they are being treated in a placebo architecture, so the big architectural question is,

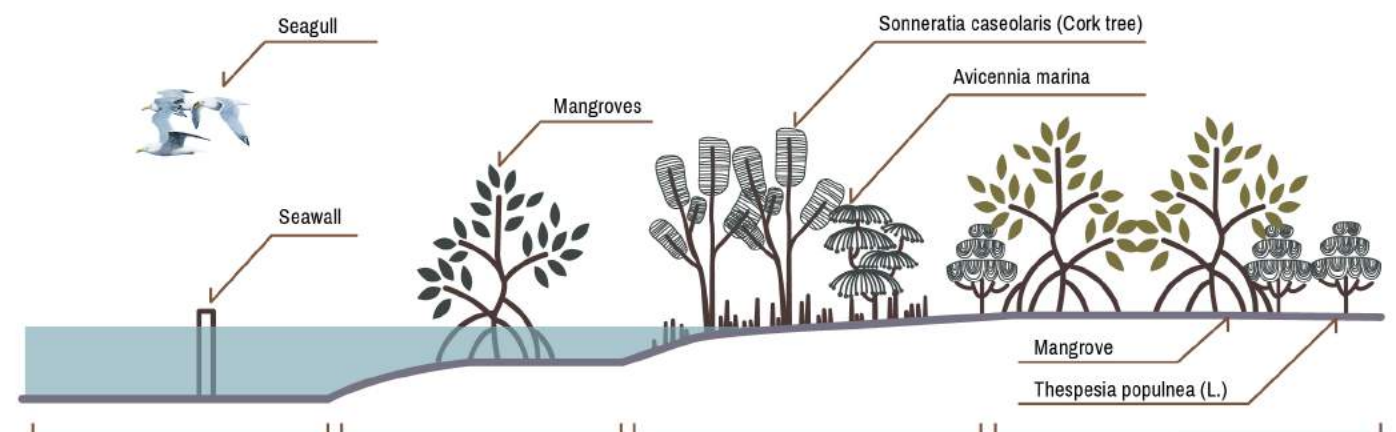
“How to design therapeutic architecture functions that control perspective and movement in user routines without the patient's feeling of control?”



Bang Pu recreation center

The Location criteria are a healing-friendly environment, near Bangkok where the children's pediatric care hospitals are located. It is an area that many routes from other provinces pass through, and is a unique area. So Bang Pu is a befitting place with great environment such as coastal area, forest, and wildlife, suitable for recuperating patients.

Section Site Analysis



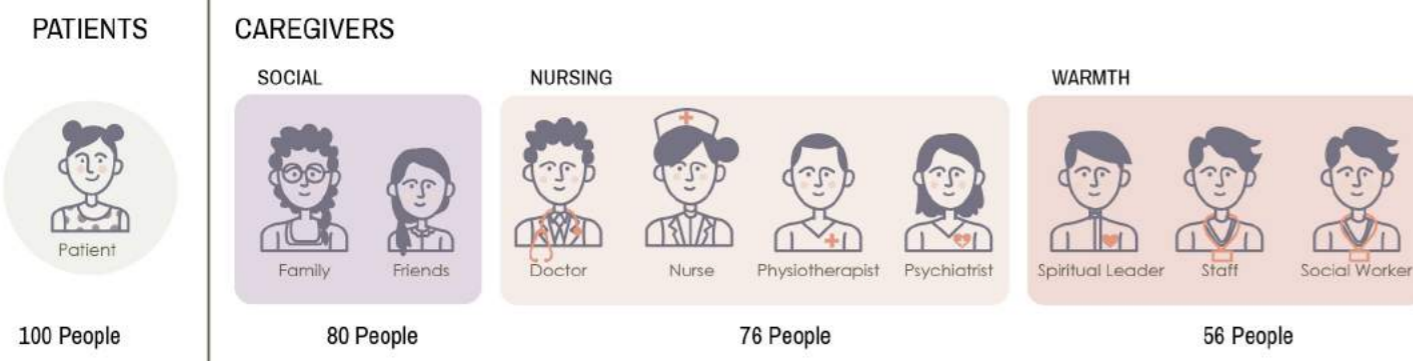
Offshore breakwaters are not effective. They cannot filter out trash, reduce the force of the waves, and they are not small sea life friendly.

Mangroves help filter out trash, and the nature of the trees is suitable for creating activities in the area.

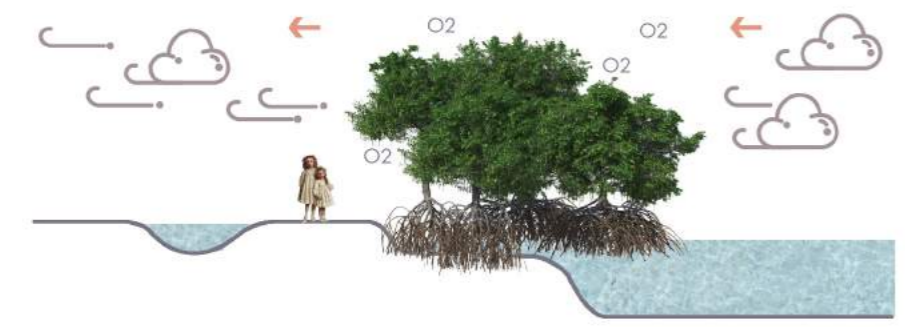
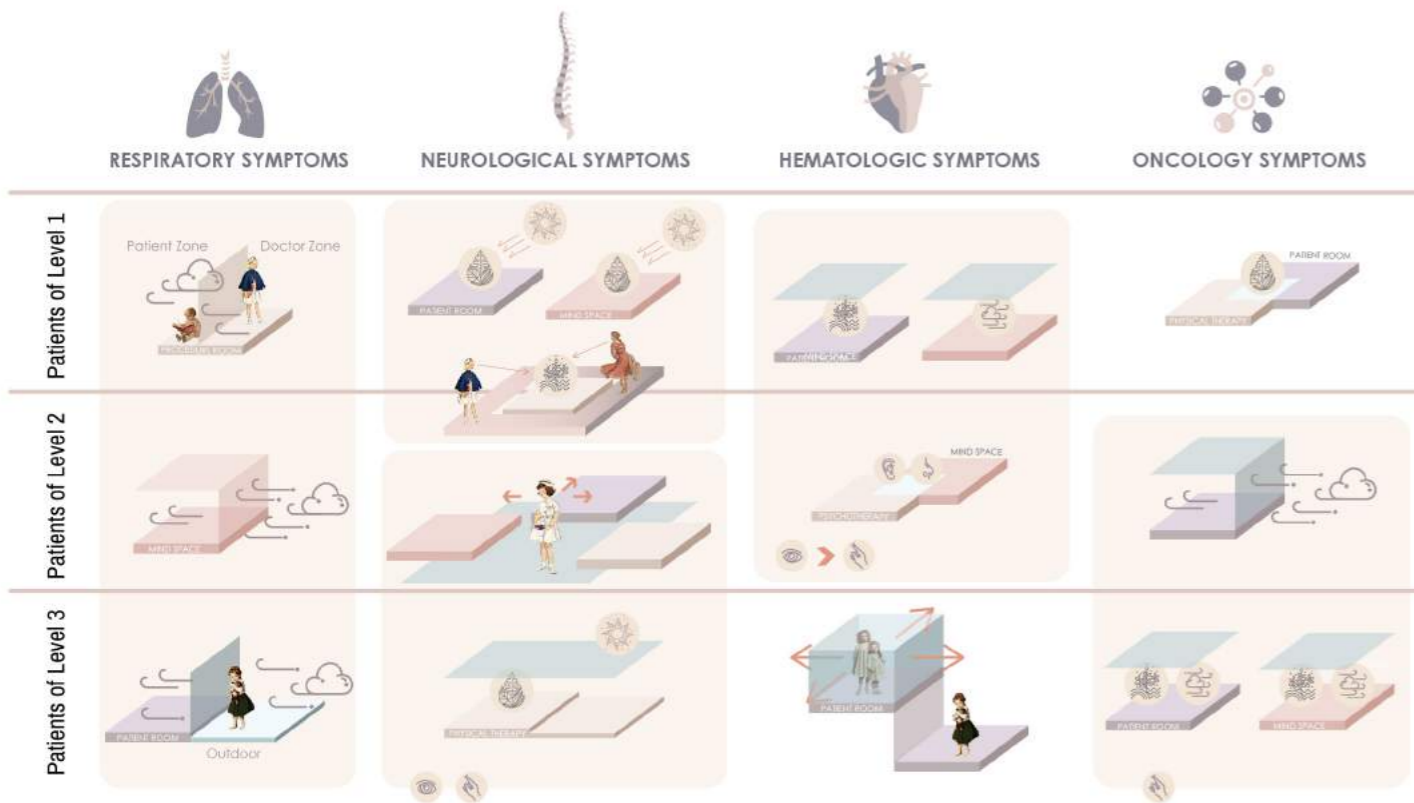
Cork trees are house of the fireflies, and there are pencil roots in tidal area.

Mangroves in the area are dying because the water cannot rise to their level. The area can support function with heavy weight.

The number of caregivers is specified by Children's Hospice requirements. By calculating as follows, the number of teachers and staff is calculated using the area ratio, and the proportion of caregivers in the recovery section was calculated based on the different needs of patients in each level, with three levels divided by activity, capacity, and disease symptoms.



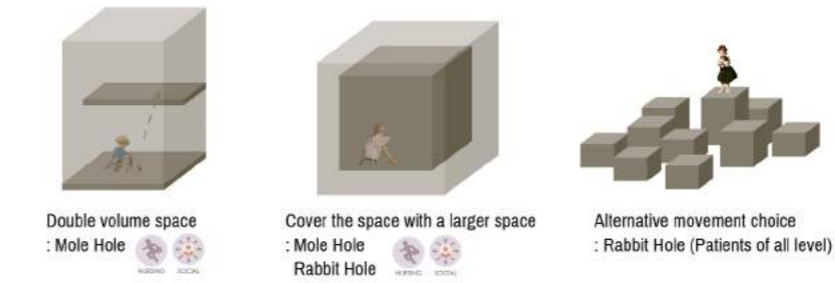
From the study of the drug and the symptoms of each patient's disease level, with the analyzed data, I decided to use Architecture Placebo in the space. The intensity of perception and relation of caregivers will be shown in the diagram.



The dreaming bridge: Loneliness, Anxiety

The environment creates a sense of adventure, oddity and imagination.

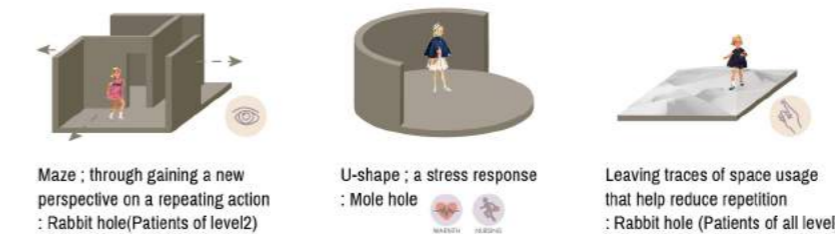
The design creates perfection, but also freedom in space to stimulate creativity and imagination. The visual serves as a hint, stimulating the user's curiosity.



Liberate ones' selves from stress: Stress, Sadness

The sense of seeing things from a different perspective.

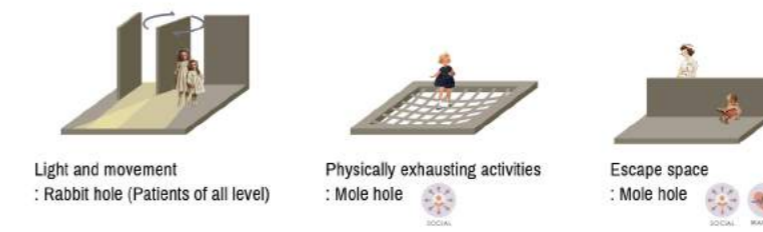
Design a space to reduce stress from suffering moments, helps in delaying the perception of time, or a space for activity with leaving traces, such as sand bed, to use as stress detection.



Trace, Story: Discomfort, Angry

Feelings expressed in a creative way.

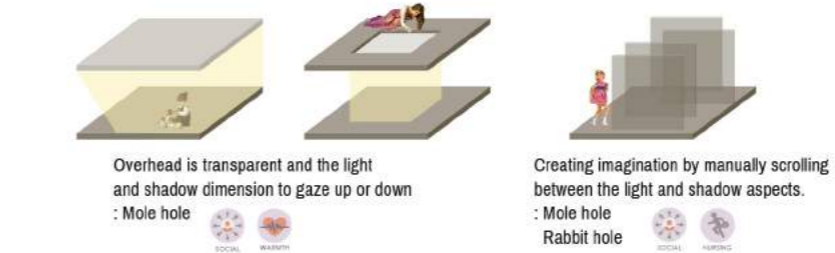
Create temporary escape spaces, spaces that allow for movement that reveals levels of anger and release it, and spaces that are constantly aware of their surroundings to feel secure, not lonely.



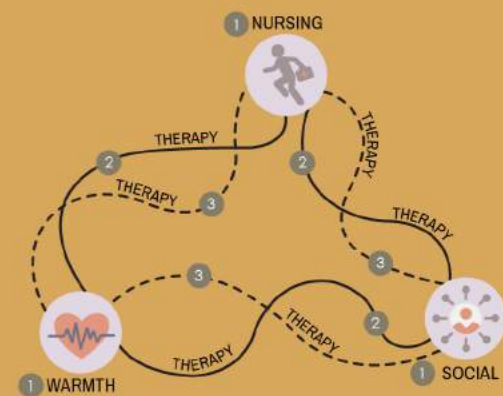
Illuminate the heart: Annoyance, Pain

Changing the posture or physique to help user change the feeling.

Changing posture from hunched over and head down to straightening, raising head, and creating positive distractions to focus on something other than pain.



Design spaces to adjust the feeling caused by illness, and transform mood and sensation modulation into spatial awareness which help patients in the production of neurotransmitters with therapeutic effects.



Architecture Placebo position

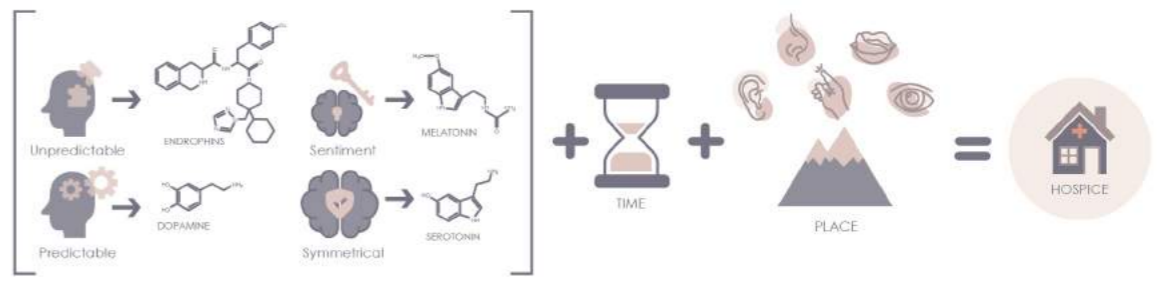
- (1). There is a patient safe zone area with multiple levels of caregivers' access.
- (2). The main transition area where the Architecture Placebo is introduced.
- (3). The alternative route that patients may feel free to use.

Safe Zone

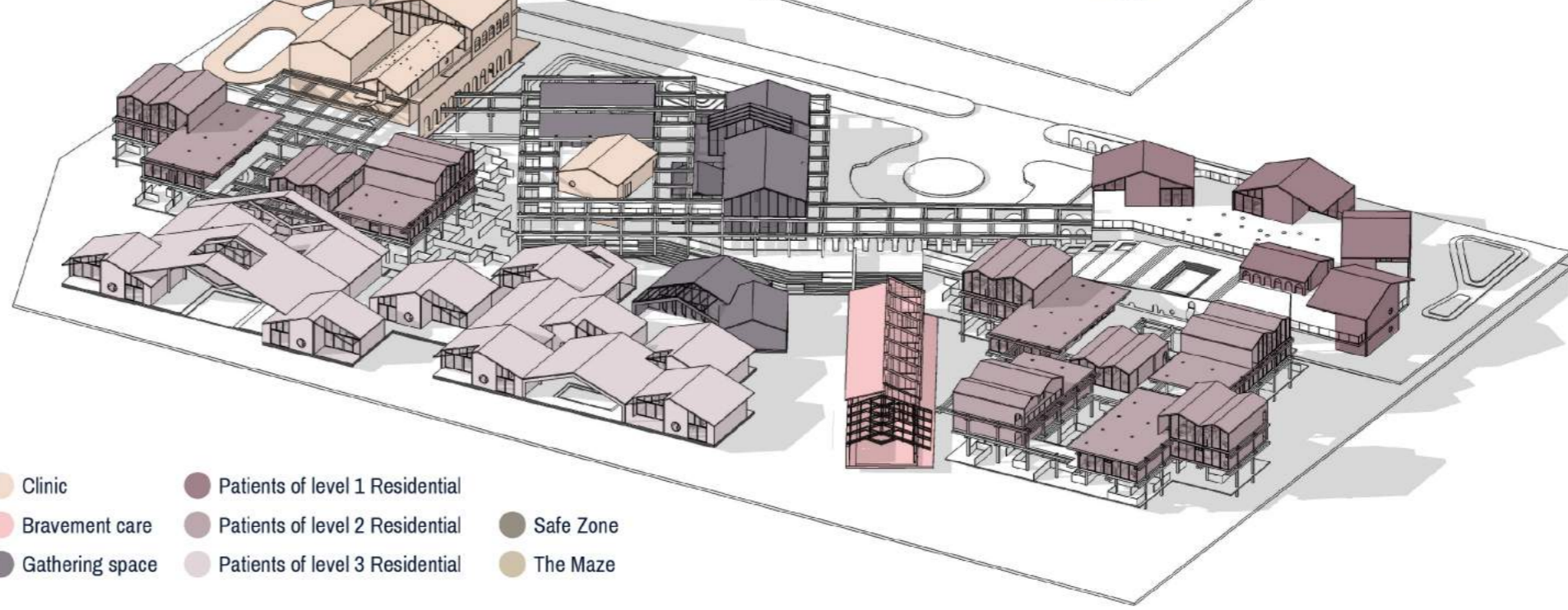
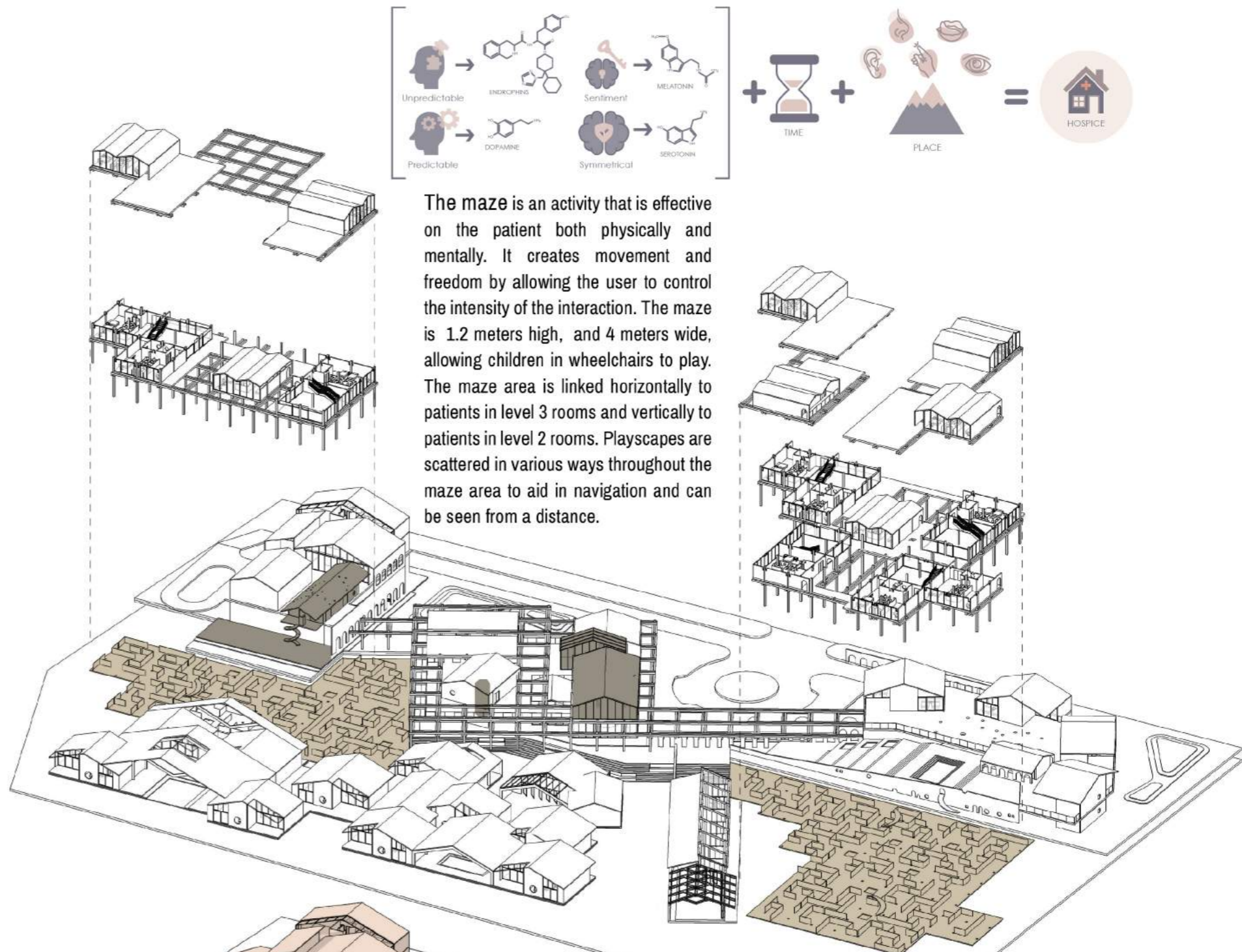
(1). Building with diagnostic and consulting spaces, and classrooms. A waiting area outside for children to run and play freely. Tilt the axis to align the physical space with the mental space. There is an entrance to a secure area inserted inside the consultation room that can be accessed from any diagnostic room. The hexagonal shape of the room will aid in creating the illusion of using space, resulting in a space delay time, reduced stress, and a safe.

2. The classroom area is connected to the library below, and the space can be customized to suit the number of students. Classrooms are divided into sections for young children aged 6 to 9 years and older, and children aged 10 to 13. There is a room in the next room where parents can watch from a distance without disturbing the classroom.

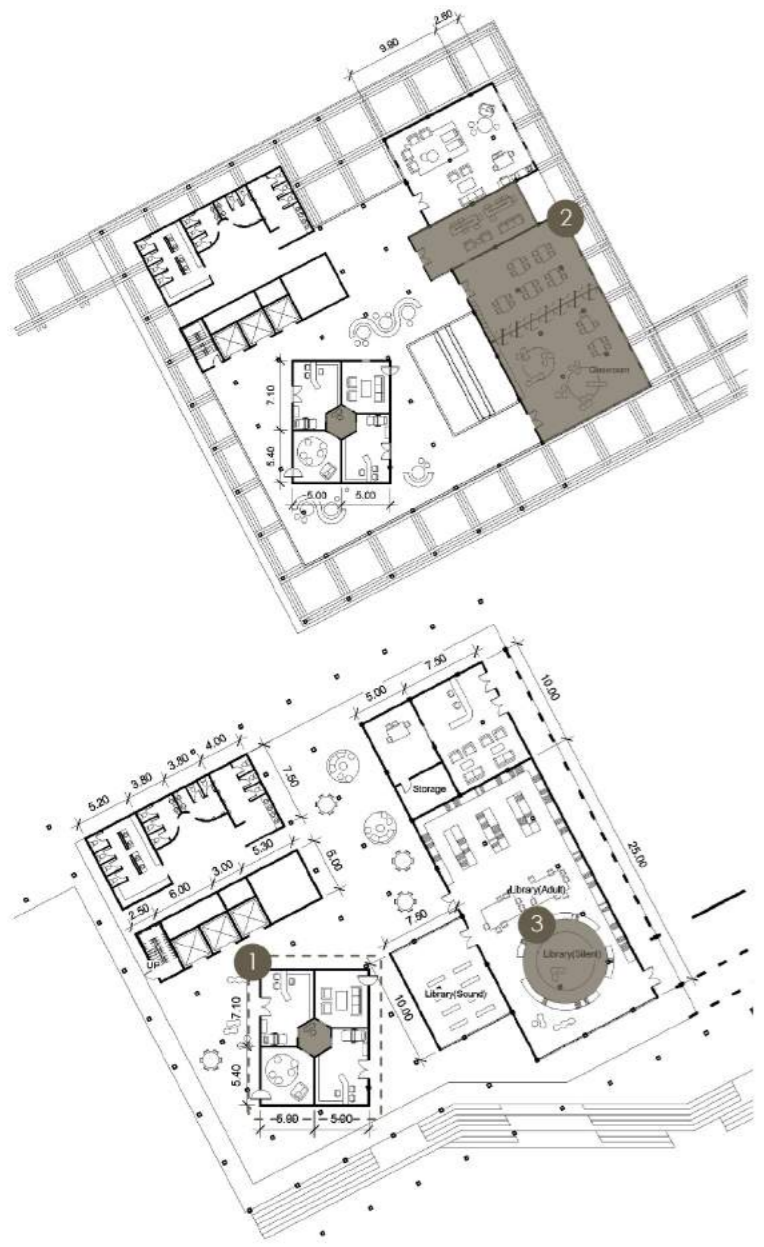
3. The children's library is divided into sound and silent zones, while the adult library contains books on topics ranging from healing to disease understanding.



The maze is an activity that is effective on the patient both physically and mentally. It creates movement and freedom by allowing the user to control the intensity of the interaction. The maze is 1.2 meters high, and 4 meters wide, allowing children in wheelchairs to play. The maze area is linked horizontally to patients in level 3 rooms and vertically to patients in level 2 rooms. Playscapes are scattered in various ways throughout the maze area to aid in navigation and can be seen from a distance.



- Clinic
- Patients of level 1 Residential
- Safe Zone
- Bravement care
- Patients of level 2 Residential
- The Maze
- Gathering space
- Patients of level 3 Residential





The project area's layout is determined by the perception of environmental factors at the time of the activity. The intensity will vary depending on the drug, symptoms, and severity of the disease.

Chemotherapy area

Chemotherapy area, the space will be used during 10 am to 3 pm. There is a playscape inside to create activity for the users inside and curiosity for the users outside. The ceiling is decorated with constellations that use the light according to the time of utility of patients. This will reduce the stress of perception of passing time and movement of the surrounding environment during the day, it will also generate imagination with the freedom to predict certain outcomes to help create Dopamine, and the awareness of natural light will help create Melatonin which will help with the recovery.



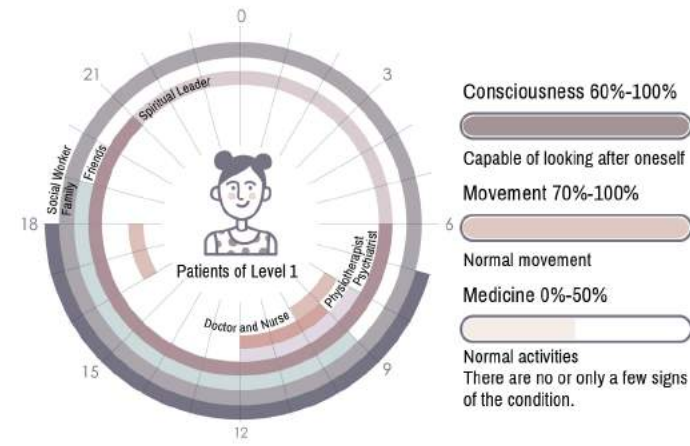
Consulting area

Consulting area, the area will be used during 3 to 5 pm which is the time that the brain relaxes. The design is an open area with only forest as a boundary to create privacy. The walkway beside mangroves is lowered to make the area a little flooded when the water rises, this will create sensory perception. The ceiling is transparent, encouraging the users to change postures.



Emotional support area

Emotional support area, there is a long walkway to see the sunset and seagulls returning to their nest. The walkway is dim to let the light shine through the seagull-shaped voids when the sun is setting, leading the sight of the users to connect with the seagulls at the end of the walkway. The perception of light and shadow and the sunset will help create Serotonin and Melatonin which help in the recovery and the well-being of the patients.



Patients of Level 1 Room Plan

The patient is able to perform activities on their own, allowing them to move as much as possible. The design focuses on outdoor activities such as swimming and playing in a playscape with mangrove. There are two direction movements, vertical and horizontal, creating perspective and texture as a distraction to help reduce the spasticity.

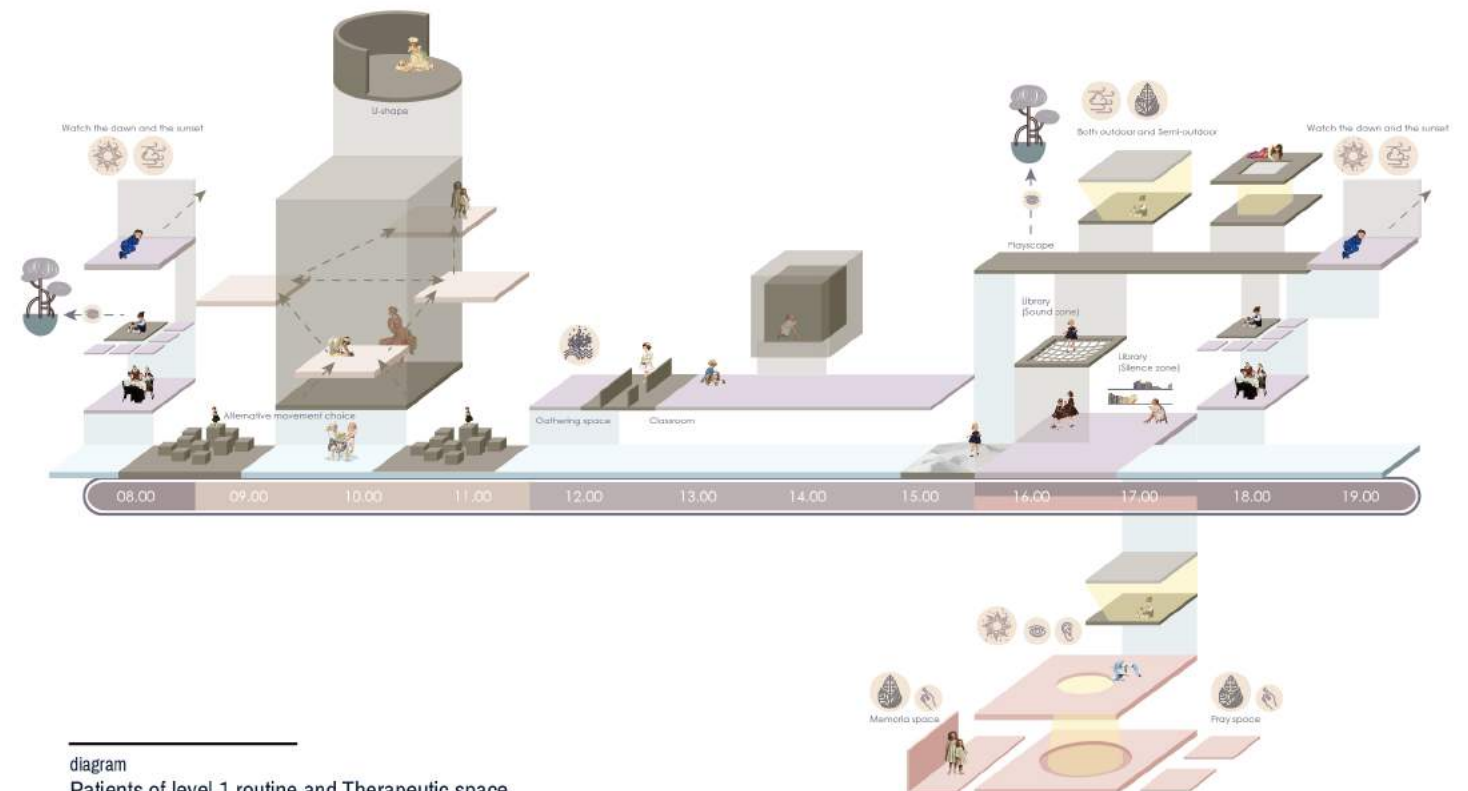
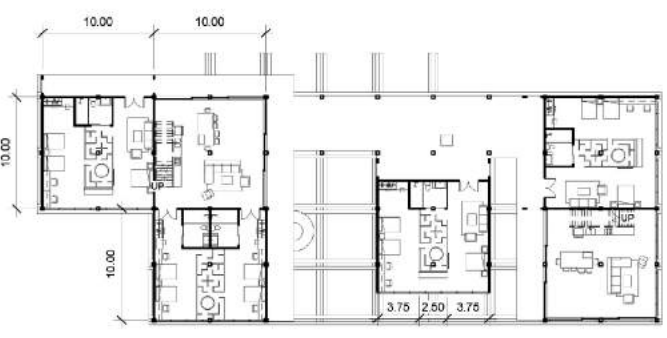
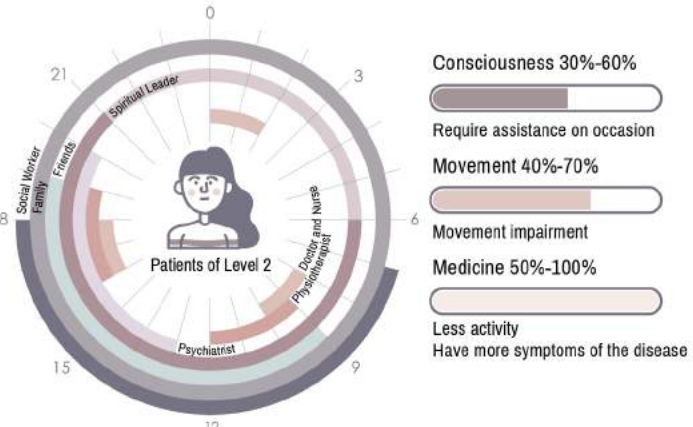
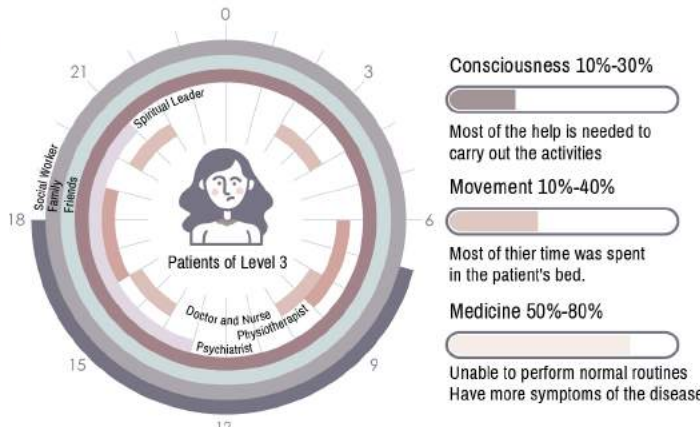


diagram
 Patients of level 1 routine and Therapeutic space



Patients of Level 2 Room Plan

Patients are wheelchair-bound, but can move around independently with supervision. Therefore, rooms are grouped together to create social support and position the space for easy access to first aid. The living areas are in the middle of cork trees, so the patient who is receiving radiation therapy is able to do outdoor activities during the day. At night, there are fireflies to aid in time perception. Natural movements evoke an interesting response from the brain, then Endorphins and Morphine are naturally produced by the body.



Patients of Level 3 Room Plan

The majority of the patient's activities are on the wheelchair and bed, with little self-movement, the floor levels of the room and paths remain constant. The space between the bedroom and the living room in the room has a safe zone space where the caregivers can choose to interact with children from time to time. The door is designed with a wide opening to allow the sea breeze to flow through as a natural ventilator, lowering the temperature in the area and reducing seizures and muscle spasms.

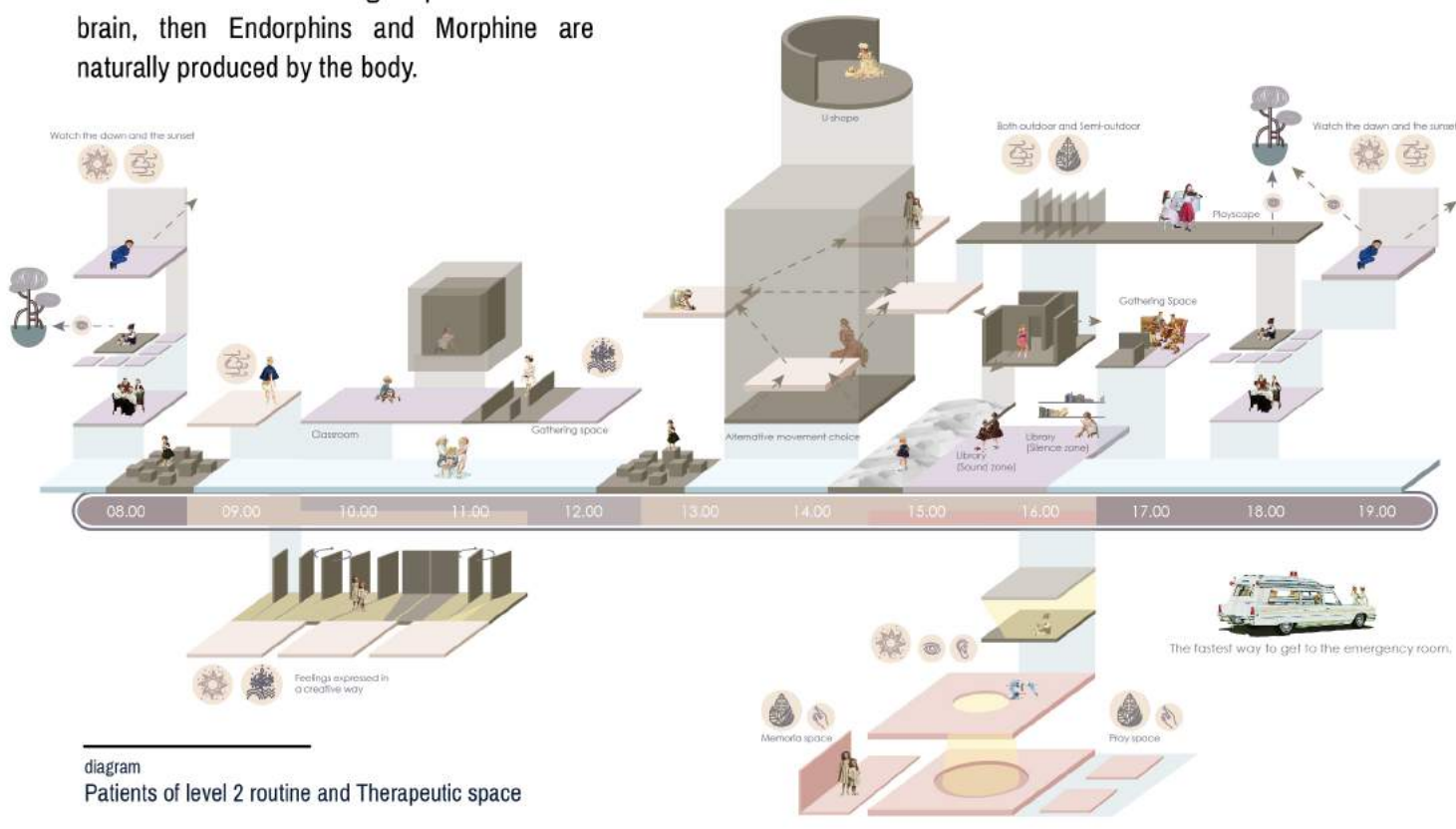


diagram Patients of level 2 routine and Therapeutic space

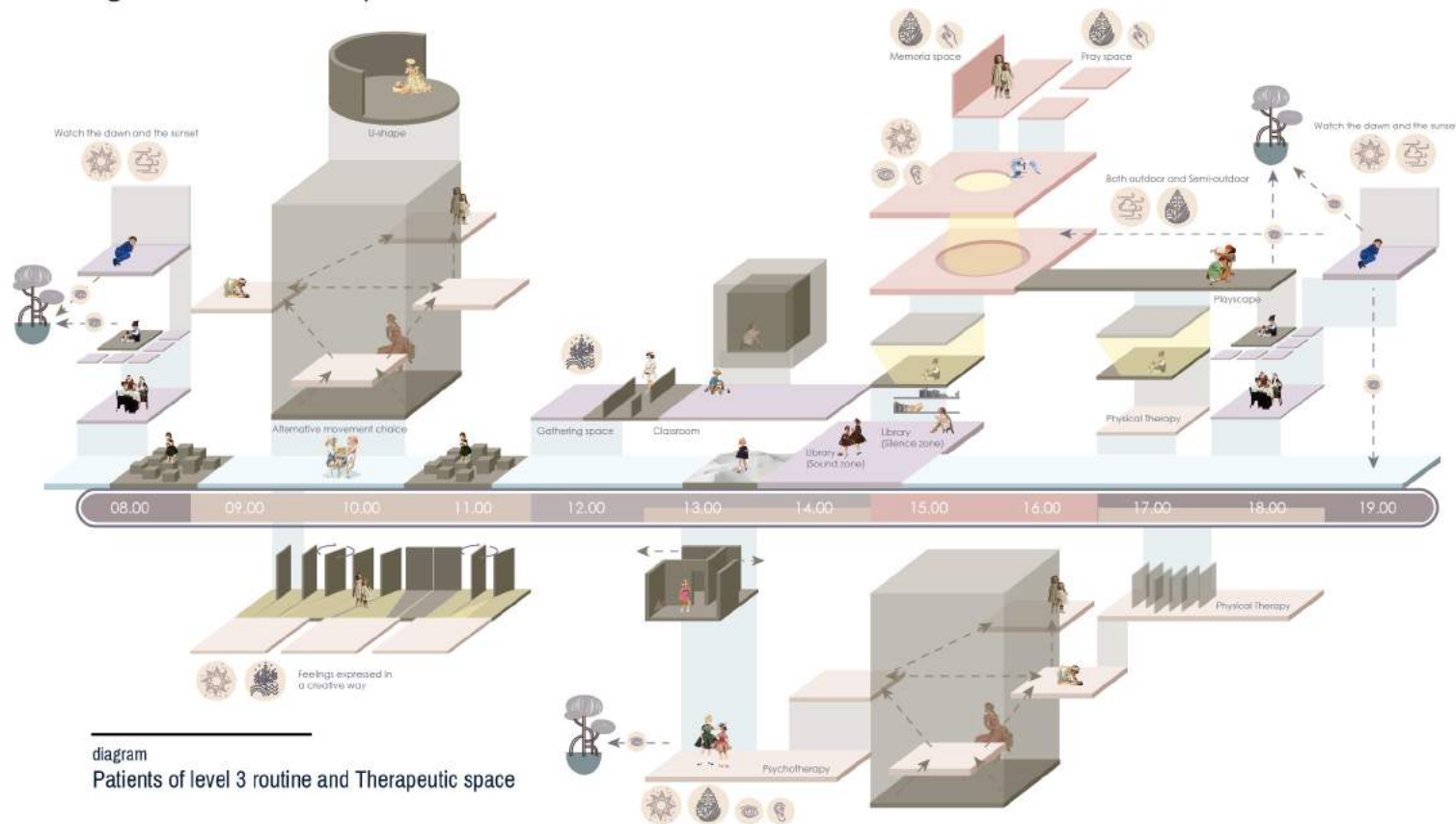


diagram Patients of level 3 routine and Therapeutic space



YUMA ONSEN

PRIVATE ONSEN AND SPA

YUMA Onsen is a Japanese private onsen and spa franchise located in Thong Lor, Bangkok. The target customer group is working age. Their services are Onsen, sauna, steaming, foot massage, aromatherapy, and body scrub. The owner rented the office building for renovation. The speciality of YUMA Onsen is a large entertainment television in the Onsen room, their own specific product, and the Japanese tea culture space, also known as the Sadou space in the waiting area, these are places for relaxation before receiving the services.

It is designed in the Wabi-Sabi style, which is a style that uses the original material as much as possible, and exudes calm, relaxation, and luxurious feeling. The material used is the dark tone with light wood in the private area, and bright it up with white textured walls in the public area. The design is based around the existing pump system and the intended size of the onsen bath. The original building had balconies that extended with each rising floor, meaning the top floor has the biggest balcony and the second floor has the smallest, but the original structure of the balconies cannot support the weight of the onsen. The building is in an area that has a lot of buildings next to it but it has to be used to provide private services, so the interior of the balcony must be designed to be as private as possible. The lighting utilized indirect warm light to give a sense of relaxation, and natural light in some narrow spaces to make the users feel more serene.



Fah
28 years old
owner

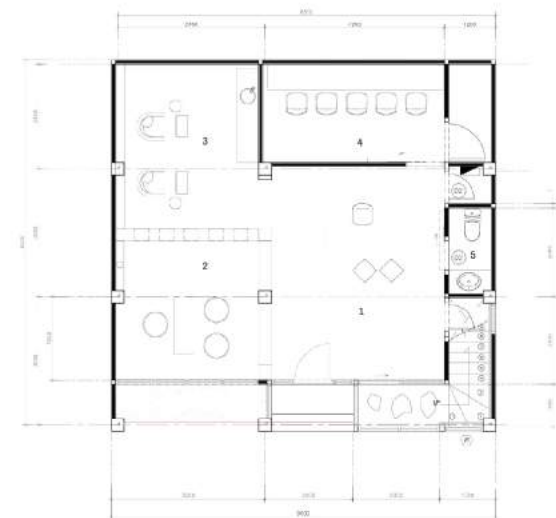
Brand product selling space on first floor.

Japanese garden view which can be seen from the Sadou space.

Star fiber optic ceiling in Foot massage room and Onsen room on third floor.

Fuji Mountain view in large onsen room on fourth floor.

Love white-stone-textured wall.



1ST FLOOR PLAN

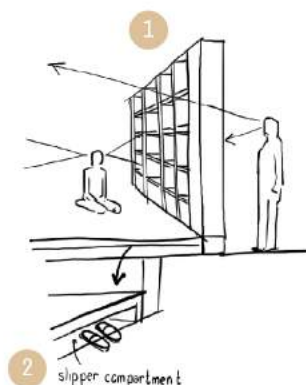
1. Lounge
2. Sadou Space
3. Treatment room
4. Pantry
5. Restroom



sketch
Sadou and treatment space



Using white-stone-textured walls in the reception lounge to give a sense of luxury. Service area and reception area are separated by walls and ceiling. The floor of the Sadou space is raised because it is an activity that needs to be done sitting on the floor. The steps leading to the Sadou space are separated with columns, then hide the treatment space behind the Sadou space for privacy.



Details

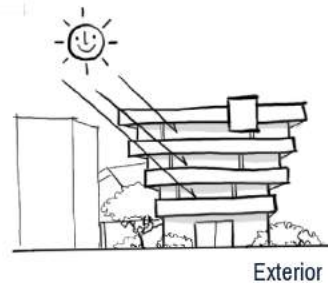
(1) The product built-in shelf which is a see-through boundary, allowing natural light through in treatment space.

(2) Slipper compartment under the steps between the lounge and the Sadou space.



2ND FLOOR PLAN

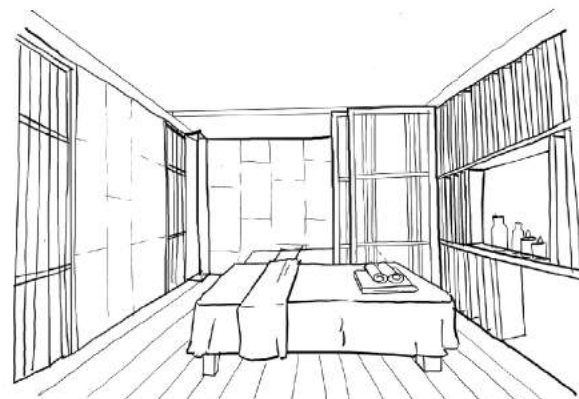
- 1. Hall
- 2. Treatment room 1
- 3. Treatment room 2
- 4. Bathroom



The door is designed to be used as both open and sliding doors. Creating dimensions with vertical and horizontal wooden slats to create a sense of calm and stability.

In the foot massage room, the Japanese windows are changed to dark curtain walls that are dark enough for the fiber optic ceiling. The curtains are placed intermittently as the boundary for each chair.

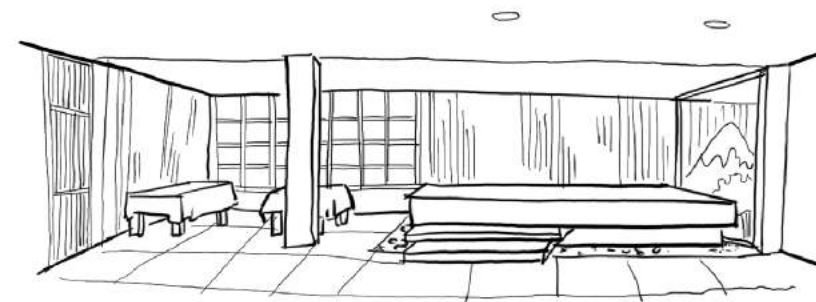
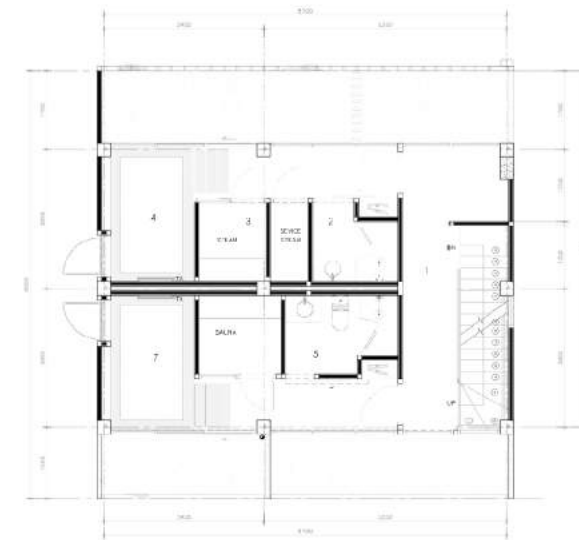
There are many columns in Treatment room, so I designed a built-in wall to cover the columns, and use it as a shelf to place equipment. The boundary between the spa bed design is changed from the Japanese partitions to dark curtains which make the room feel soft.



Materials used in the design are a blend between light color woods and dark tiles. A gravel path is designed in front of the onsen to drain water after getting out of the bath. On the balcony, bamboo gardens block the outside eyes, but still allow natural light to enter the space.

3RD FLOOR PLAN

- 1. Hall
- 2. Bathroom 1
- 3. Steam 1
- 4. Onsen 1
- 5. Bathroom 2
- 6. Sauna 2
- 7. Onsen 2

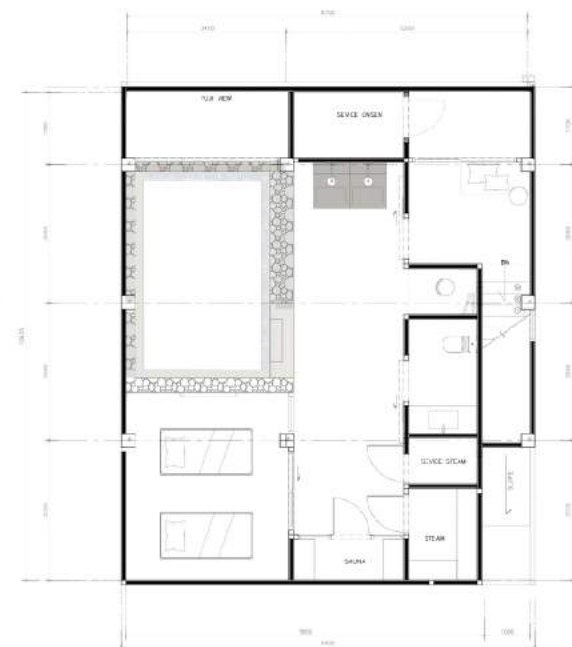


sketch
Treatment and Large onsen

The large onsen room is divided into proportion by glass walls. The walls are gray-textured with vertical line patterns which are thick enough to drill shelves into. The onsen is decorated well with white gravel and stair indirect light around the onsen area.

4TH FLOOR PLAN

- 1. Balance space
- 2. Hall
- 3. Onsen
- 4. Treatment space
- 5. Sauna
- 6. Steam
- 7. Shower
- 8. Bathroom



FLEXI BANGNA

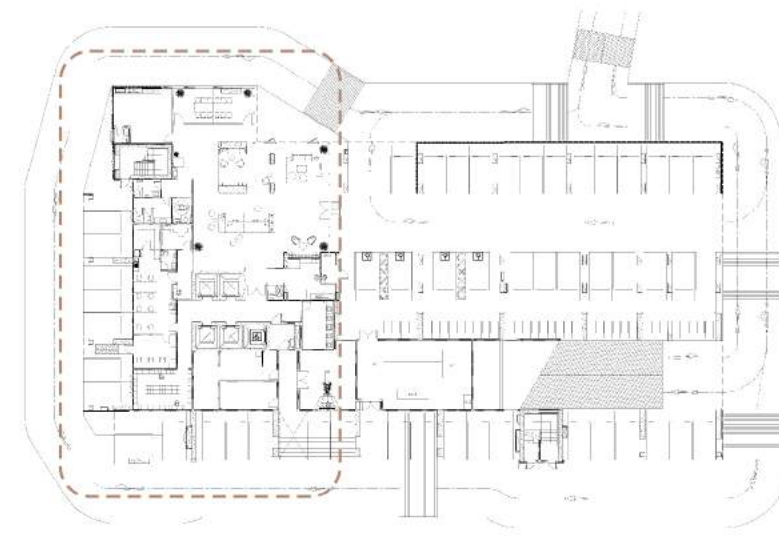
CONDOMINIUM

Flexi Bang Na is a condominium project which SENA x HANKYU developer company developed for generation Y and Z target groups to create unique, but isn't alienated space. This project is the first time that I worked in a corporation with a developer team, marketing team, architect, landscape architect, and interior designer team, in the company. I was in charge of designing common facilities such as the entrance private lobby on the first floor, co-working space, and fitness on the sixth floor.

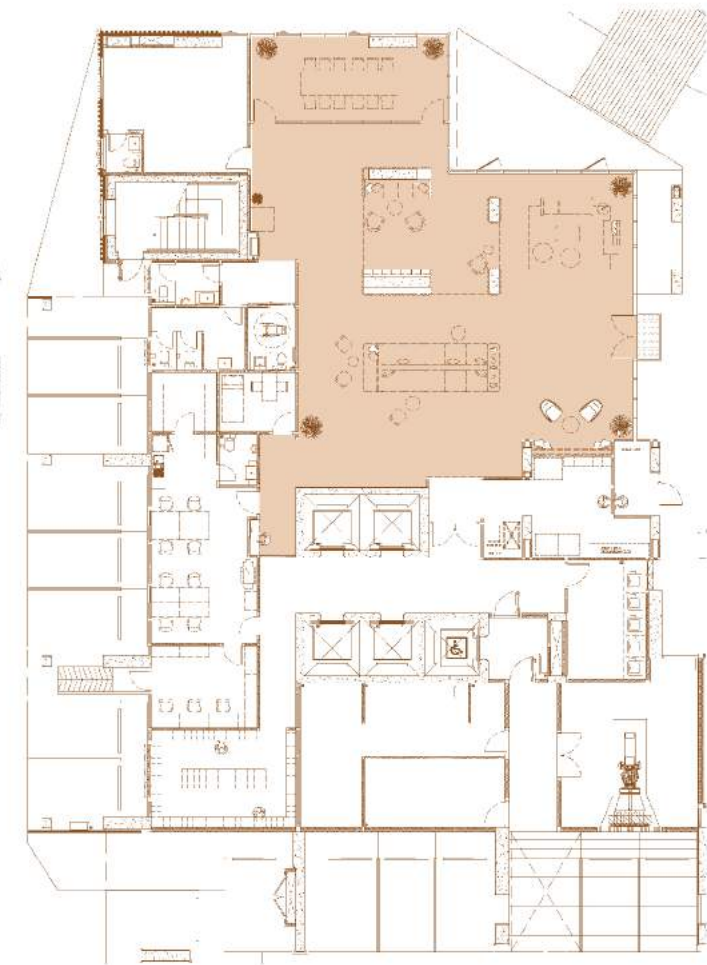
The key word of the design is 'Good Design' which means simple, cozy, and long-lasting. Designing team chose the Modern Japandi style (Modern+Japan+Scandinavia) to design the interior. Mood and tone are warm and cozy with modern space. Most of the materials are wood and simple material. The chosen color of the furniture is rust orange and white to make the users feel active and refreshed. Common facilities are designed conjointly in proportion in which each of them isn't too wide to emphasize the element of a shared space and encourage the users to interact with one another. The lighting is designed to use natural light throughout the space with some artificial light, both warm and white lights, to make the space not only clean and bright, but also warm.



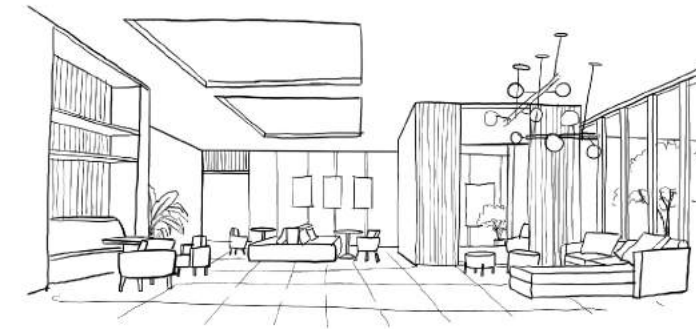
- A common space that is a blank canvas for the users to create their own spaces.
- Creating a Co-Working space that the users can host small activities with their groups of friends.
- Smart Fitness gym with a swimming pool and garden views.
- Love wood and wood slats.



1ST FLOOR PLAN



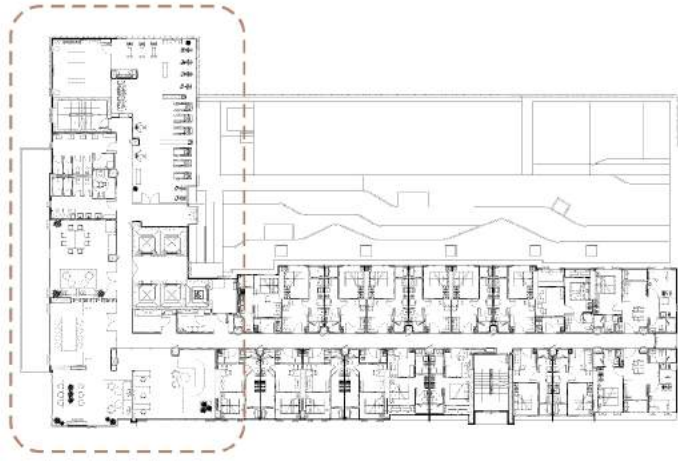
Private lobby space plan



sketch
Private lobby space

The private lobby is huge and wide, the functions are a waiting and meeting area in different scales that are heavily designed with comfortable sofa sets. The light boundary is designed to separate the space with the help of some wood material, like a frame highlighting for the space.





6TH FLOOR PLAN

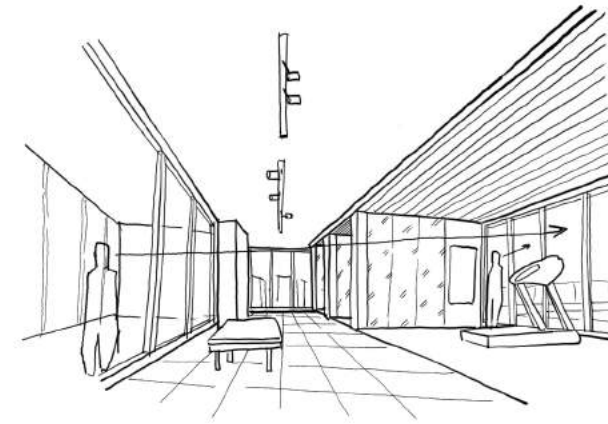
In co-working space, the designs are various types of seats which the users can sit according to their likings such as sitting on the pillow, chair, couch, sofa, or stool. Overhead plane is created by wood slats in the raised floor area where users need to sit on the floor, making it a boundary for the space.



MATERIAL

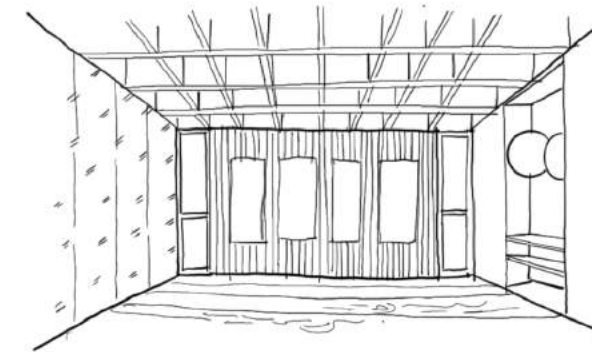


Co-working space plan
Fitness plan



sketch
Fitness

Fitness is a long room. There are three wide column, making the room look narrow, so mirrors are added to the columns to make reflective surfaces, making the room feel more open. Separate the workout area and walkway with wood material and use rubber tiles for durability suitable for function of the room.



sketch
Yoga room

The ceiling of the yoga room used to be designed for doing yoga fly, but it is changed to a flat ceiling for easy maintenance. The space on one side of the wall is designed to be an equipment renting area, and a mirror on one side, and a smart screen on another side.



N&Y HOUSE

PRIVATE RESIDENTIAL

N&Y House is a renovation residential project owned by Mr.Nut and Mrs.Yhuu, the other members of this house are Mrs.Yhuu's mother, their daughter and son, and housemaid. They are Chinese, so the design has to work with "Feng Shui" regarding health and wealth. There are three floors in this house.

1ST Floor : Public area, meet and greet space, Mrs.Yhuu's hobby of tailoring space, and back of house space

2ND Floor : Residential space such as living room, bedrooms of the family member, and gym.

3RD Floor : Space for family expansion in the future and bedroom for relative guests.

My part of the design is the second floor which consists of a private living room, master bedroom with walk-in closet and bathroom, granny's Bedroom, and kid's Bedroom. The design is modern-classic style. The chosen materials are white marble tiles, grey marble tiles, wood laminate, and gloss laminate with grey furniture. The design started from the hall, in each floor, in the same ways then expanded to the other parts of the house. The size of doors and windows are fixed by the number of Feng Shui. Some of the furniture and built-in furniture used the old ones because they just changed recently. Lighting focused on the use of natural light according to each room utility.



Mr.Nut

Mrs.Yhuu

owner

Lots of wardrobes in every area including hall and living room.

Walk-in closet design using the original door which is half-translucent and transparent.

Smart Fitness gym with a swimming pool and garden views.

Kids' bedrooms were decorated in blue colour and used the furniture in adult size.

Master bathroom and Kids bathroom have urinals.

Doors for most of the cupboards.



The second floor was an extremely private space. The requirement for the living room was that one side of the wall had to be a built-in closet, so I designed a different laminate texture for the element of the built-in shelves door.



2ND FLOOR PLAN

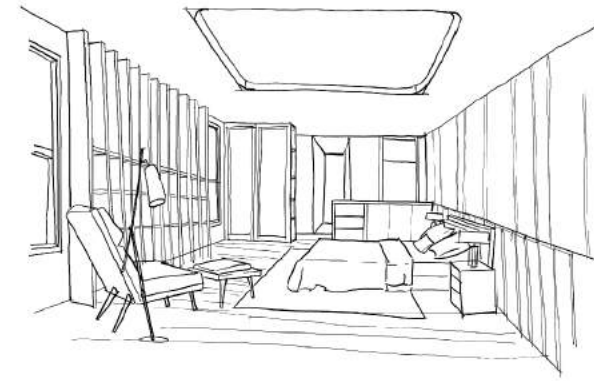
1. Stair
2. Elevator
3. Pantry
4. Granny's Bedroom
5. Bathroom
6. Walk-in Closet
7. Kid's Bedroom
8. Living room
9. Master Bedroom
10. Fitness room
11. Storage



Master bedroom was decorated by black-gloss laminate, wood-textured laminate, and grey-marble tiles. The shape of furniture and the colour of material made the room feel warm and luxurious.



sketch
Master Bedroom and Bathroom



sketch
Granny's Bedroom

Granny's bedroom had a calm decoration, but wasn't obsolete. Granny's hobby is reading, and she only watches television in the living room, so I designed a bookshelf instead of a television. Shelves are designed for convenient pick up. Use warm and soft colour and material.



sketch
Kid's Bedroom

Kid's room used normal scale furniture. There was a play space, homework space, and sleeping space. I designed the see-through cupboards door, circle ceiling in the shape of the moon, and I chose blue for the colour, making the room feel fun and youthful.

