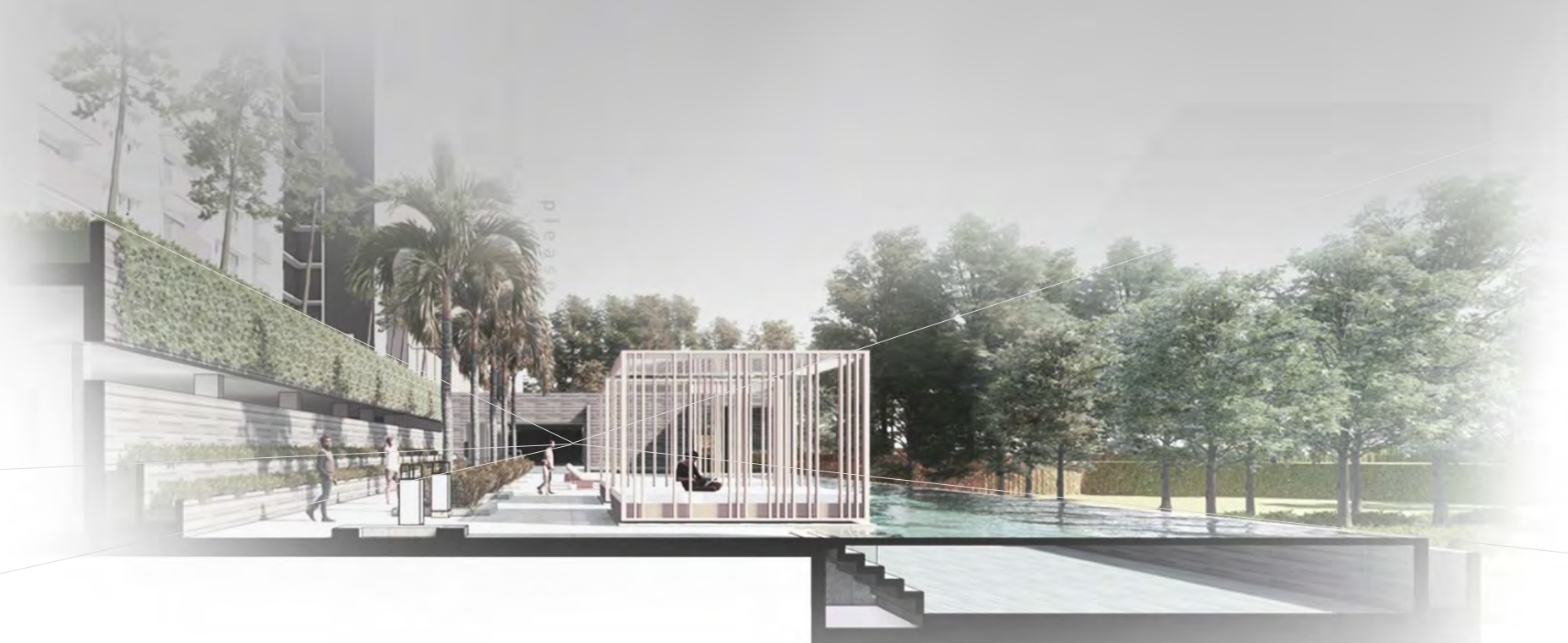


PLEASE ALLOW ME
TO INTRODUCE

MYSELF

ARCHITECTURAL PORTFOLIO





NEIL ANTHONY SALCEDO



THE WORKS

GARNETT | PHILIPPINES

MAHINDRA | INDIA

LYMAN | INDONESIA

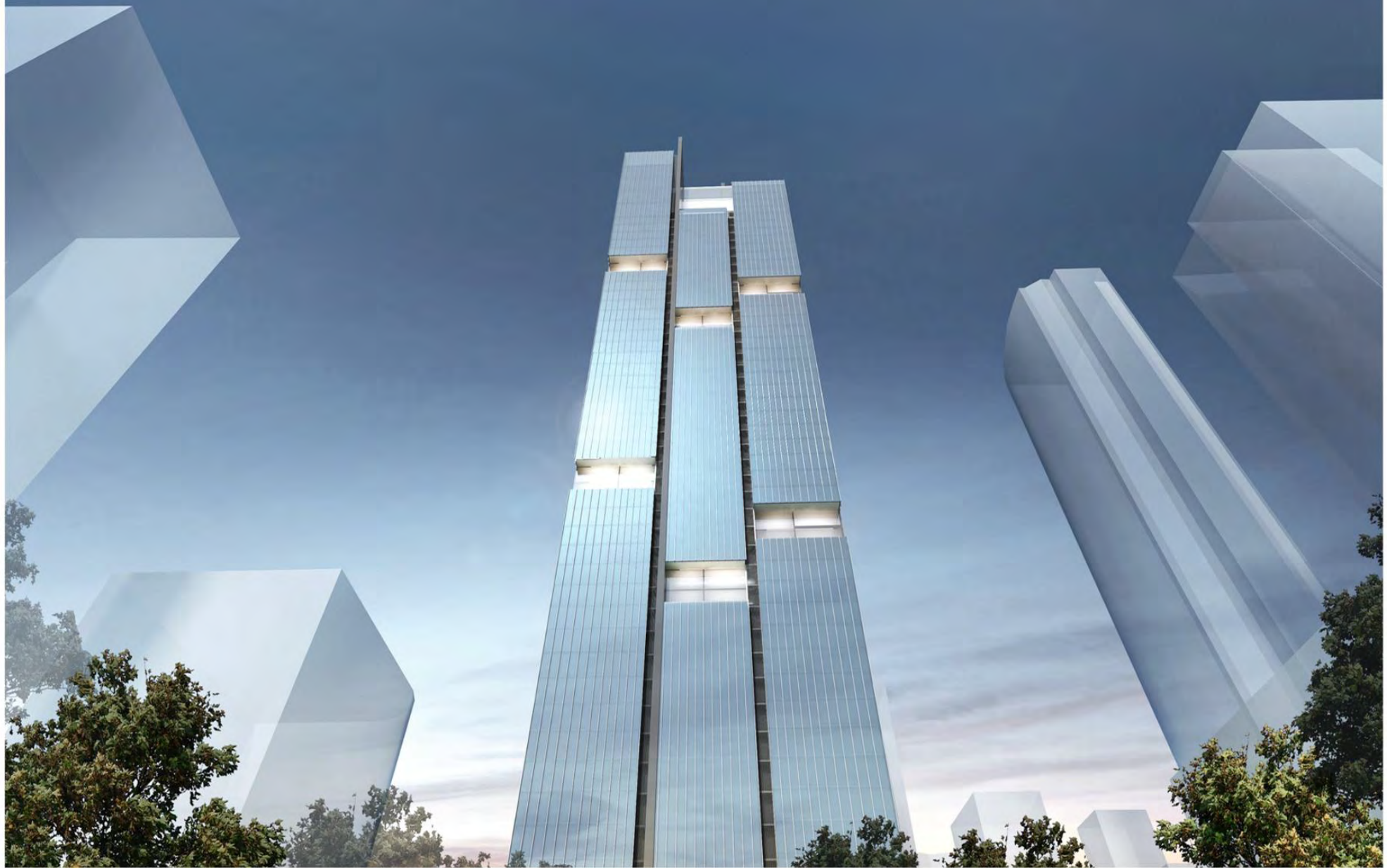
RAMDASPETH | INDIA

MURASAKI | JAPAN

GARNETT LUXURY RESIDENCES

MANILA PHILIPPINES

CLIENT | AYALA LAND



PROJECT TYPE: CONDOMINIUM

GFA: 63,175 SQM

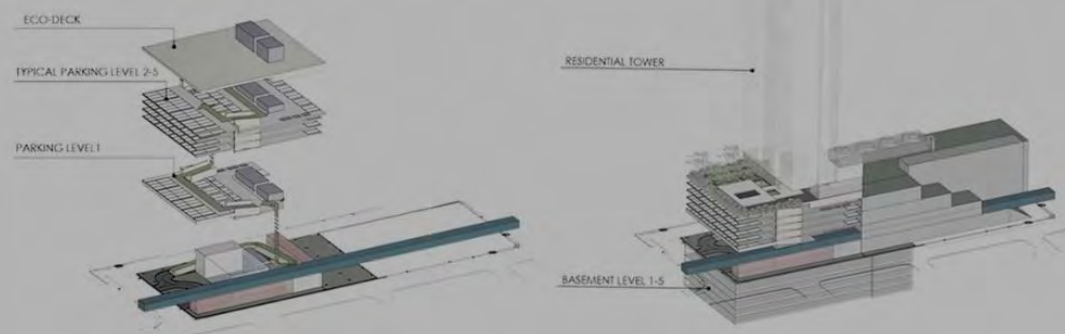
BLDG HT: 206 MTS

TOTAL FLRS: 65

UNIT MIX: 2 BRM, 3BDRM, 4 BDRM

POISED TO BE AN ICONIC LANDMARK IN THE HEART OF MAKATI CBD, IN MANILA, PHILIPPINES- THE TOWER FEATURES A CAREFUL AND SPECIFIC GRID DESIGN WITH COLUMNS PLACED ON PERIMETER ALLOWING FLEXIBILITY IN ADAPTIVE AND MODULAR UNIT DISTRIBUTION AND PLANNING.

THE ARCHITECTURE FEATURES A VERY SLEEK AND SIMPLE CURTAIN GLASS TOWER. THE VERTICALITY IS PUNCTUATED BY SKY FACILITIES DISTRIBUTED AT DIFFERENT LEVELS. THE TOP OF BUILDING FEATURES LIFESTYLE FACILITIES SUCH AS SKY GYM, LIBRARY, FUNCTION AREAS AND PRIVATE DINING AREAS.



SALSETTE 77

BYCULLA | INDIA

CLIENT | PENINSULA LAND





RESIDENCES @ BOTANICA

KANAKAPURA | MUMBAI INDIA

CLIENT | MAHINDRA LIFE SPACES





OPTION 1
 TOTAL SALEABLE AREA: 757,020 SQM
 TOTAL PARKING NOS: 561
 FOREST FACING UNITS: 60%



MASTERPLAN

PROJECT TYPE: CONDOMINIUM 4 TOWERS

GFA: 56,560 SQM

BLDG HT: 84 MTS

TOTAL FLRS: 28/30

UNIT MIX: 2 BRM, 3BDRM,

THE SITE IS LOCATED IN A MANGO ORCHARD AND PART OF THE STRATEGY IN MASTERPLANNING AND BLOCK PLACEMENT IS TO KEEP MAXIMUM TREES ON SITE- ALLOWING 75 PERCENT OF THE UNITS TO ENJOY LUSH FOREST VIEWS THAT FORMS THE HEART OF THE PROJECT.

THE POOL FACILITY IS RELATIVE TO CENTRAL GREEN CLUB AND OTHER FACILITIES ARE DISTRIBUTED ON EACH TOWER PHASE CATERING FOR SPORTS, MULTI PURPOSE HALL, GYM, LIBRARY AND LIFESTYLE AREAS.



TOWER DIAGRAM



BLOCK PLACING

TOWER PLANS



TOWER A



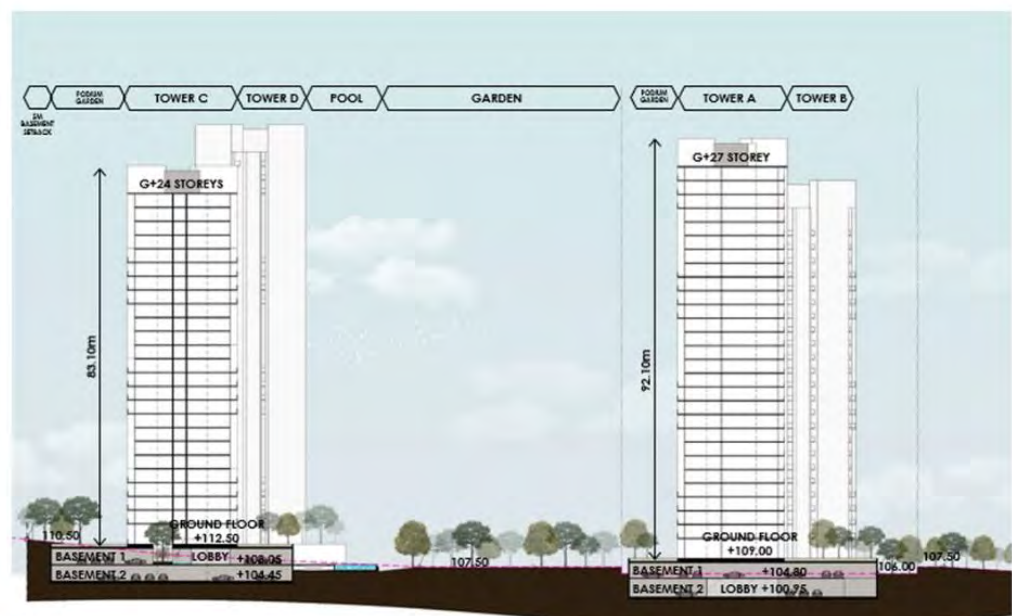
TOWER B



3 BDRM



2+1 BDRM



SECTION



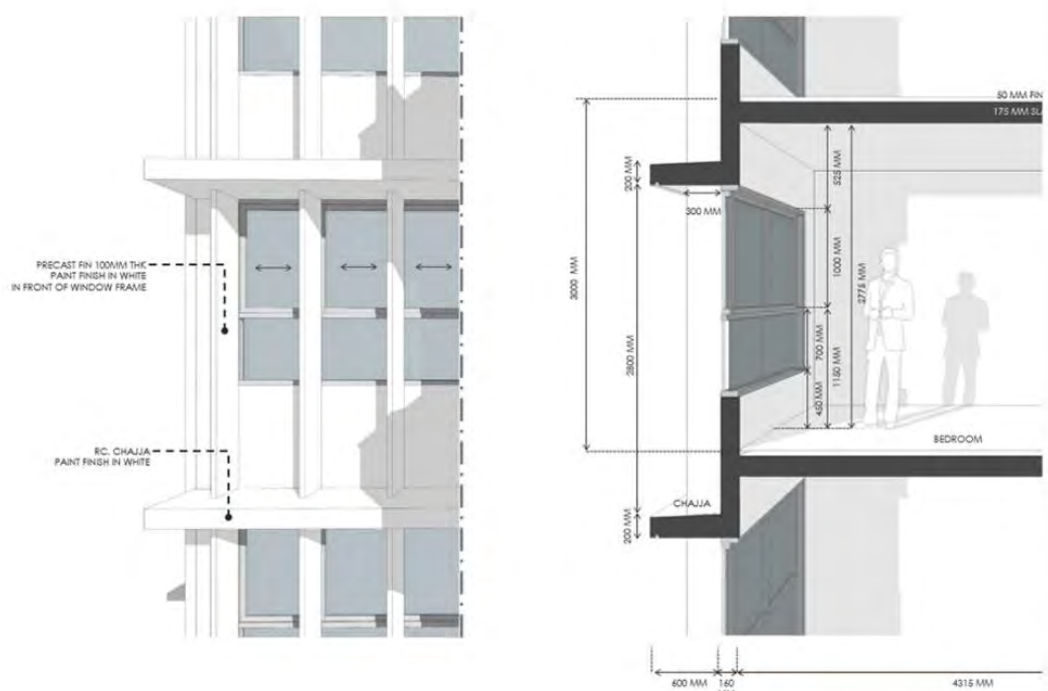
FAÇADE ELEVATION

FAÇADE STRATEGY

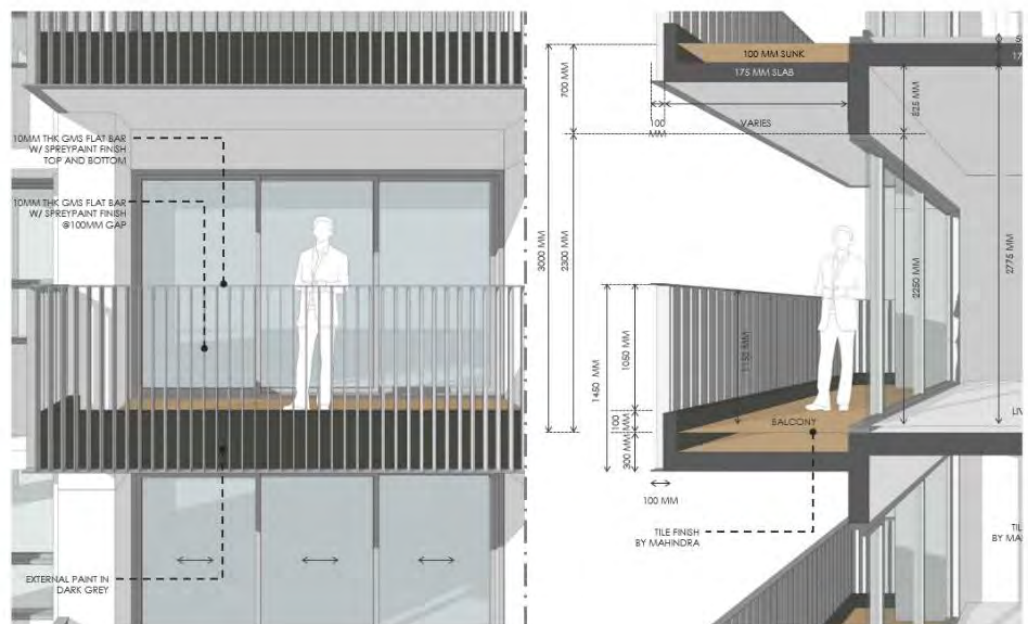
THE APPROACH ON FAÇADE IS KEPT SIMPLE. RC PAINTED FOR WALLS, A STANDARD SLIDING WINDOW SYSTEM, AND BALCONIES WITH THIN BALLUSTRADE MEMBERS.

WITH CAREFUL MANIPULATION OF BALCONIES AND FENESTRATION PLACEMENTS, VOIDS AT ALTERNATING LEVELS ARE CREATED, GIVING OPPORTUNITES FOR FACADE EXPLORATIONS AND PLAY .THE CENTRAL PORTION OF THE TOWER IS SUPRESSED, PAINTED GREY AND HIGHLIGHTED VERTICALLY BY THIN WHITE RC BLADE WALLS-ALLOWING THE TOWER TO LOOK THINNER RATHER THAN A SINGLE MASSIVE TOWER BLOCK

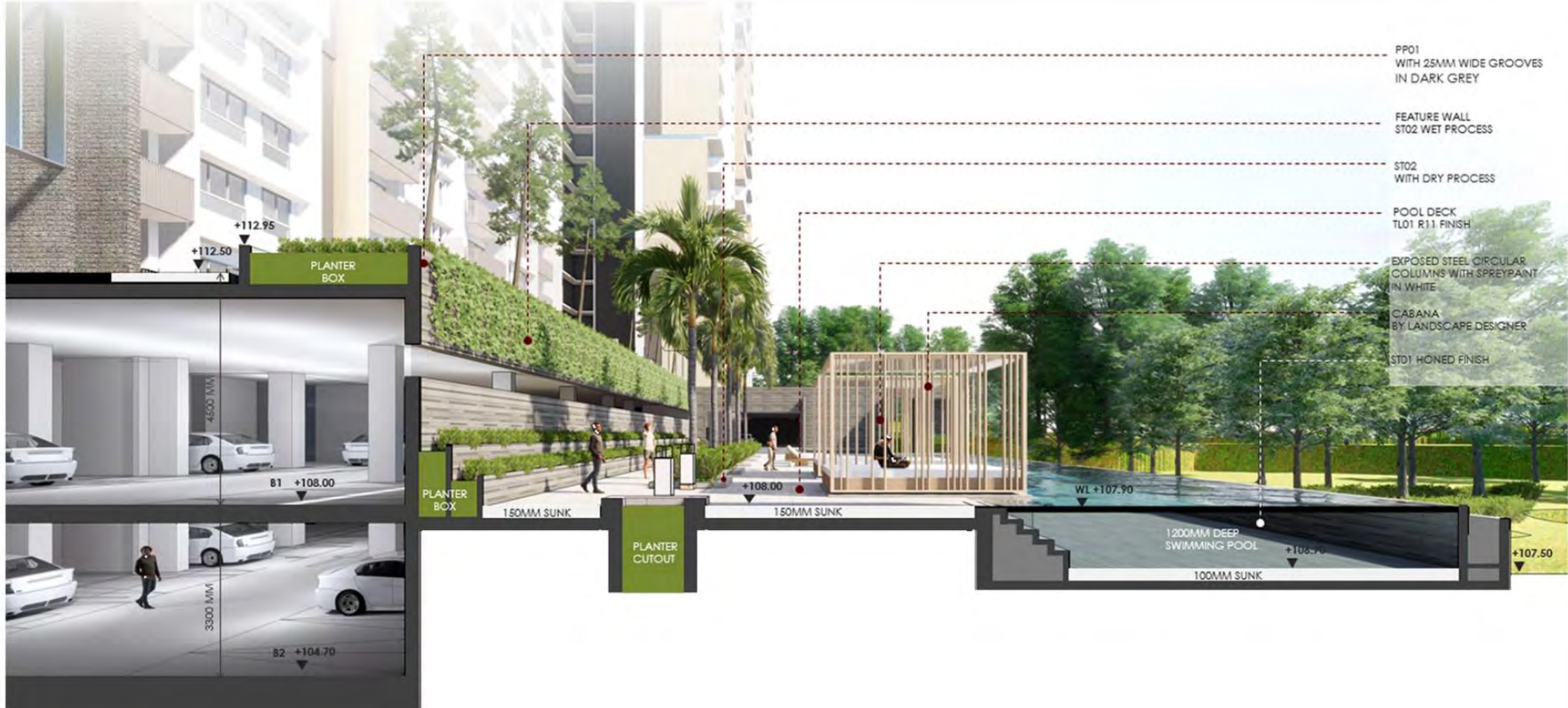
THIS RESULTED IN A FAÇADE PATTERN THAT IS STRAIGHTFORWARD, IDENTIFIABLE AND UNIQUE TO THE PROJECT, DEVOID OF ORNAMENTATION AND OTHER COSMETICS.



FAÇADE DETAILS



FAÇADE DETAILS



POOL DECK SECTION

POOL AND CLUB FACILITIES

THE OBJECTIVE IN DESIGNING MAIN CLUB IS TO SEAMLESSLY CONNECT THE POOL EXPERIENCE TO THE LUSH VEGETATION OF THE FOREST. THE POOL DECK VIEW IS KEPT OPEN, WITH INFINITY EDGES ALLOWING UNOBSTRUCTED VISTA OUT TO THE GREEN AREA.

FACILITES HEREIN ARE OUTDOOR DINING, CABANAS, SUNKEN POOL, **KIDS'** POOL, BBQ AREA, BUGGY PATH, NATURAL POND AND NATURE CAMP.

PRVATE UNITS AT GROUND

AT THE BASE OF THE RESIDENTIAL TOWER, ARE PRIVATE UNITS WITH EXTENDED TERRACES. PART OF THE STRATEGY IS TO PARTIALLY RAISE THIS LEVEL HIGHER- WITH PERMITER GREENERY ALLOWING INDIRECT VIEWS AND PRIVACY FROM PEDESTRIANS.



UNIT- PVT DECK SECTION

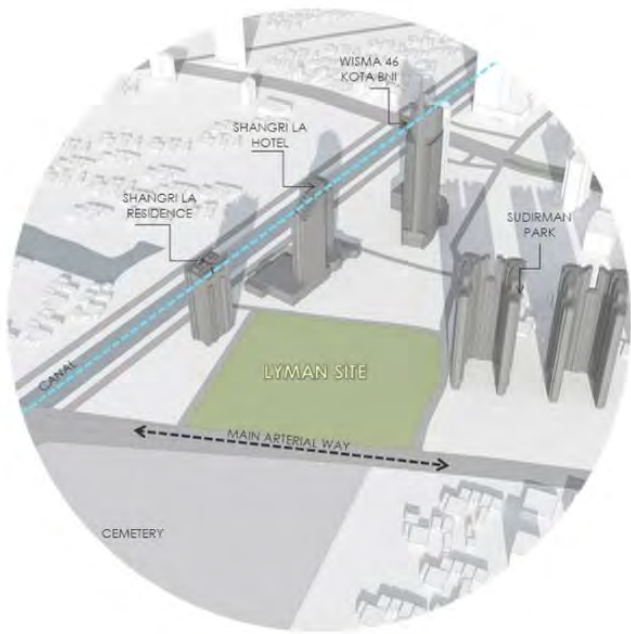


SEKAWAN MIXED USE DVT

JAKARTA | INDONESIA

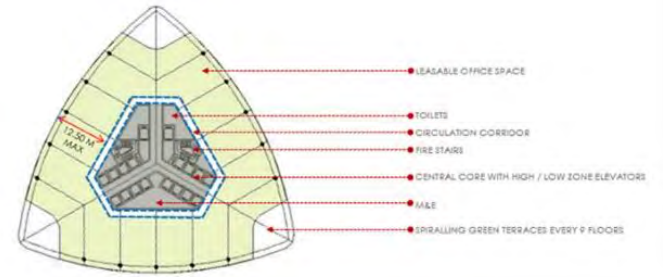
CLIENT | LYMAN DEVT



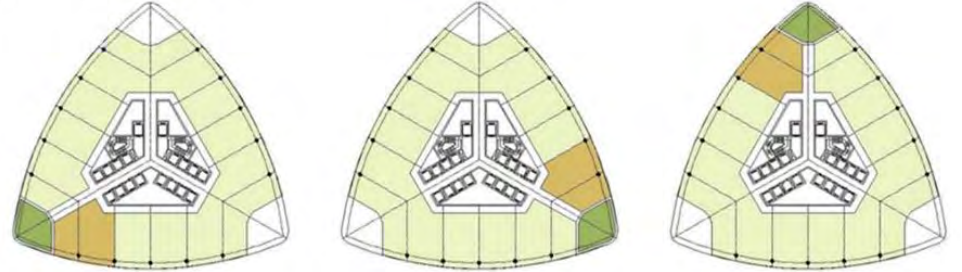


+ TYPICAL OFFICE PLATE

Floor GFA (excluding terraces) 2,500 sm
 Net Leasable Areas 1,850 sm
 Estimated Efficiency 74%



+ ROTATING TERRACES CONCEPT



LEGEND

- GREEN TERRACES
- DOUBLE/ TRIPLE VOLUME INTERNAL VOIDS

OFFICE TOWER PLAN

PROJECT TYPE: MIXED USE DEVELOPMENT

TOTAL GFA: 303,600 SQM

COMPONENT 1: RETAIL

GFA: 75,000 SQM

BLDG HT: MTS

COMPONENT 2: OFFICE BUILDING

GFA: 100,000 SQM

BLDG HT: 128 MTS

TOTAL FLRS: 40

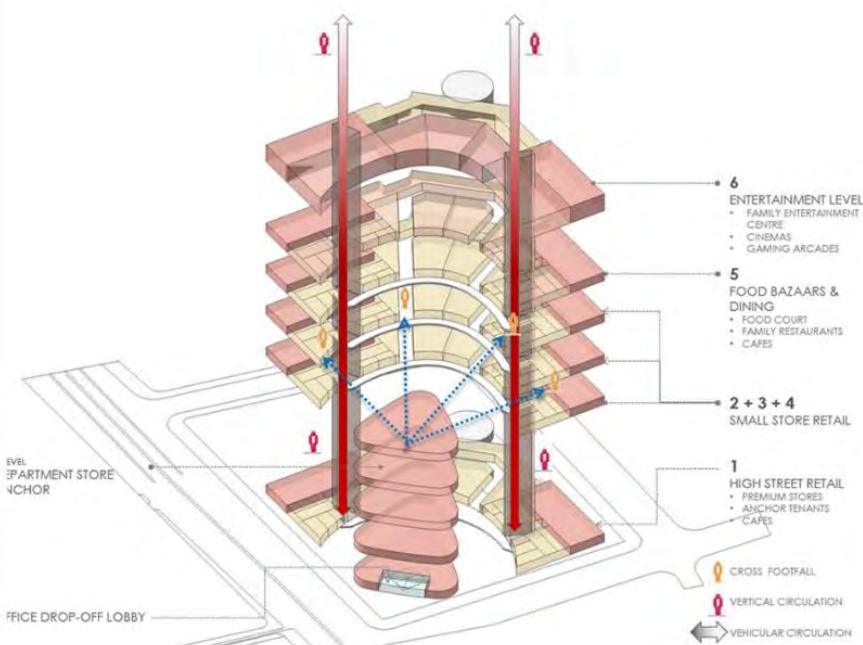
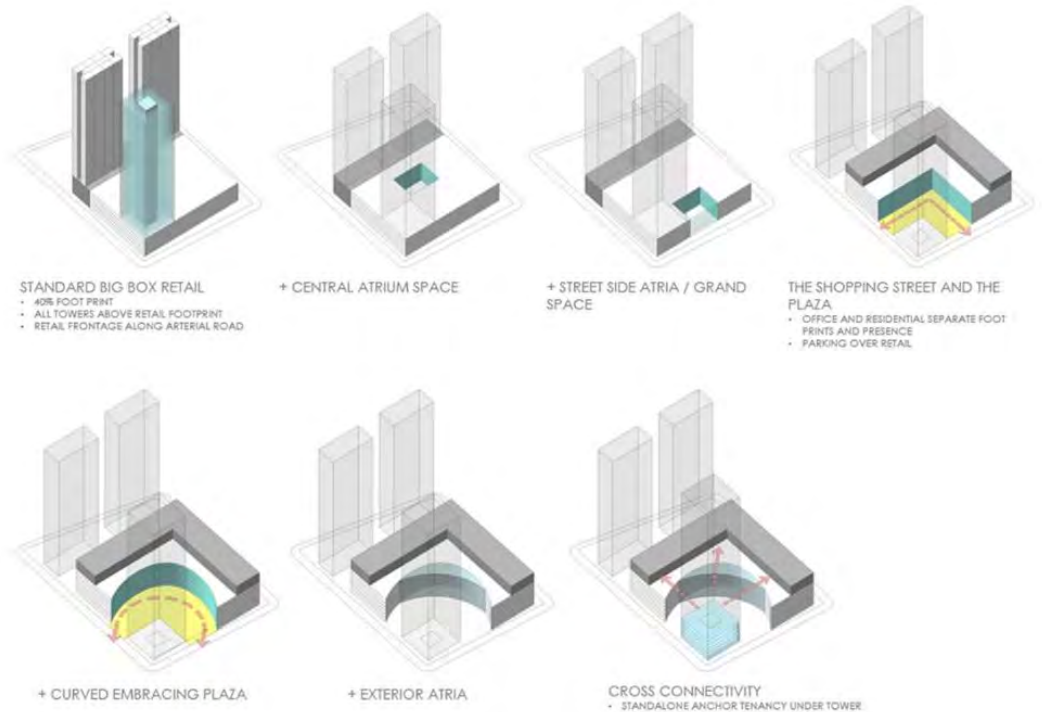
COMPONENT 3: CONDOMINIUM TOWER

GFA: 128,600 SQM

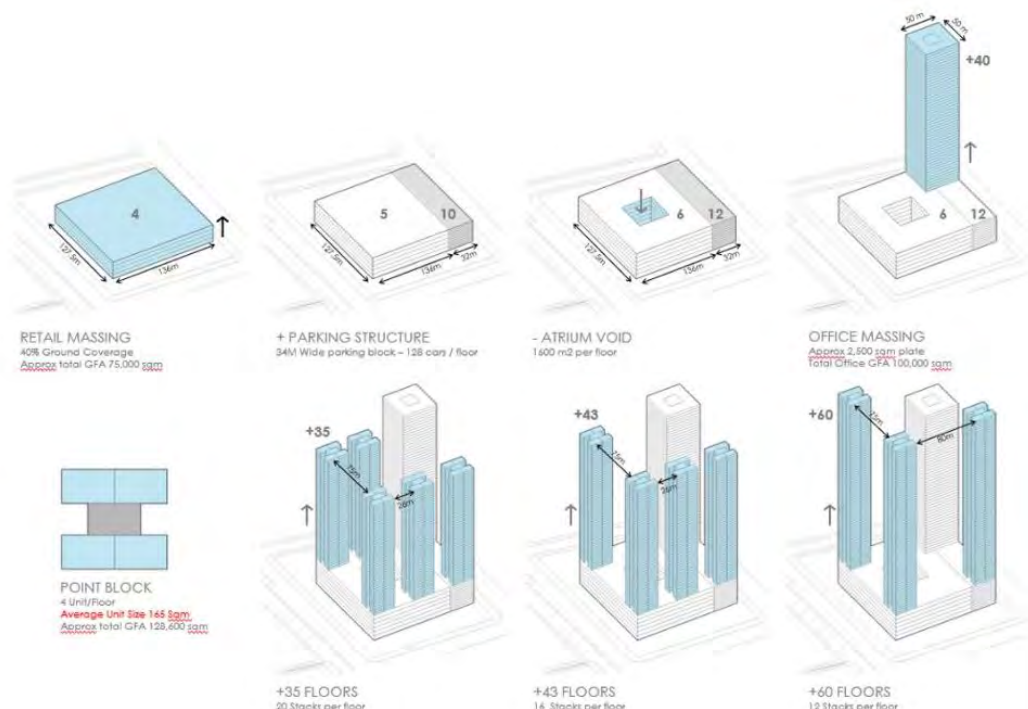
BLDG HT: 165 MTS

TOTAL FLRS: 43

UNIT MIX: STUDIO, 2 BRM, 3BDRM,



RETAIL DIAGRAM



BLOCK MASSING STUDY

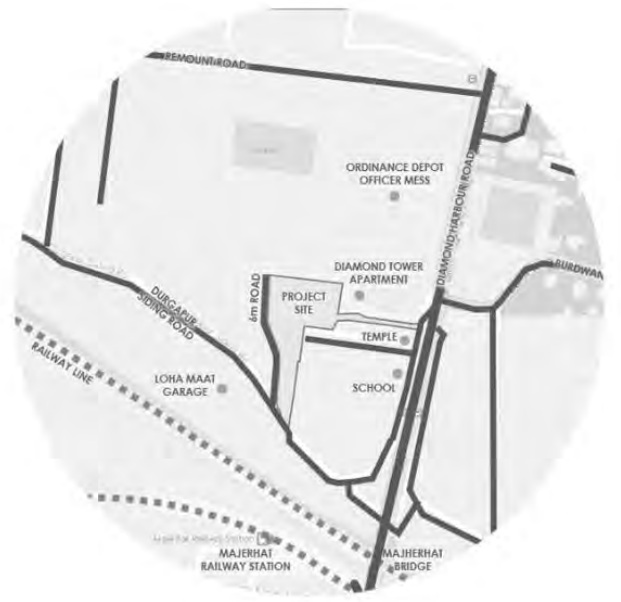
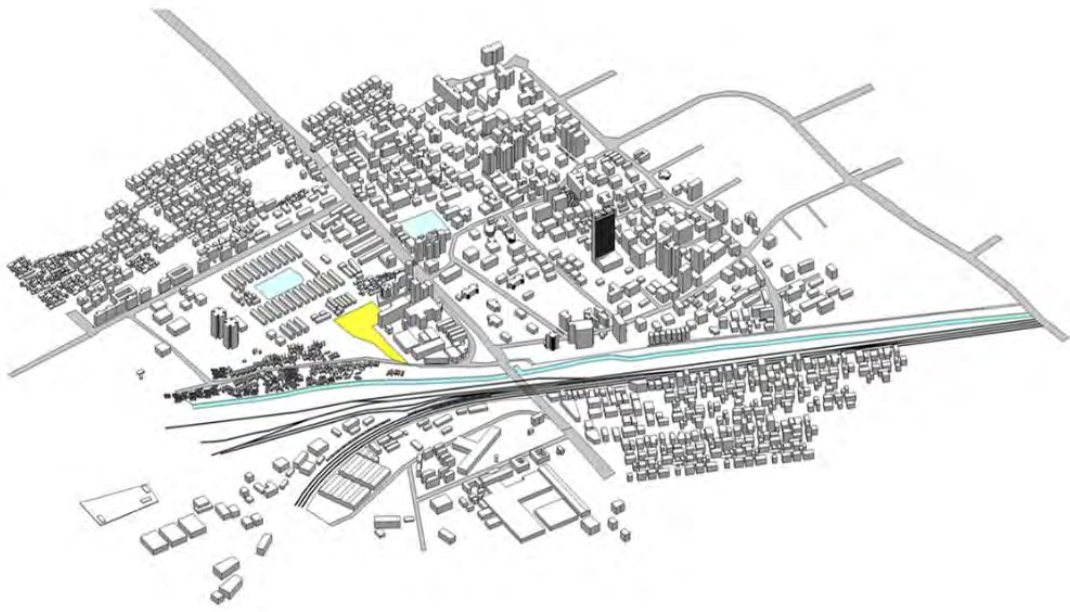
ALIPORE RESIDENCES

KOLKATA | INDIA

CLIENT | TATA







THE SITE



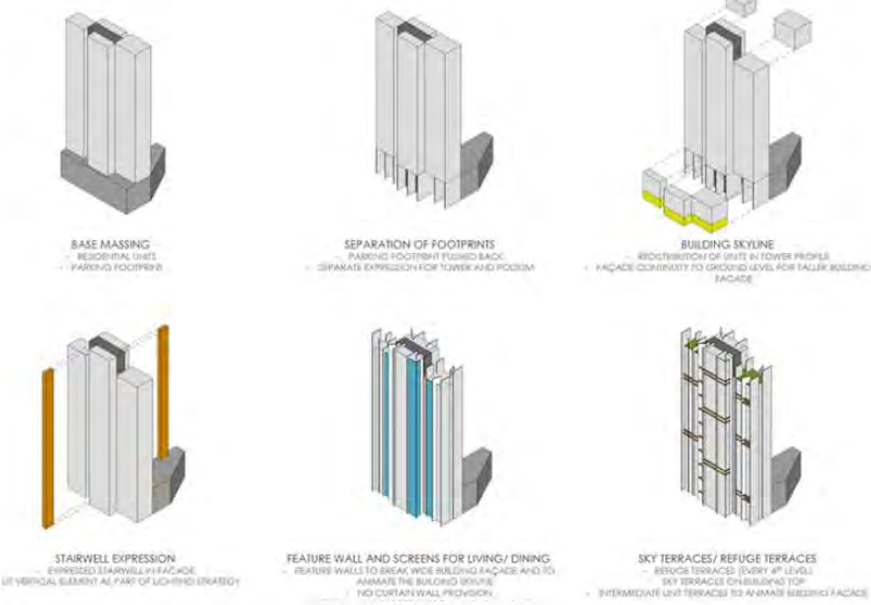
TOWER PLAN



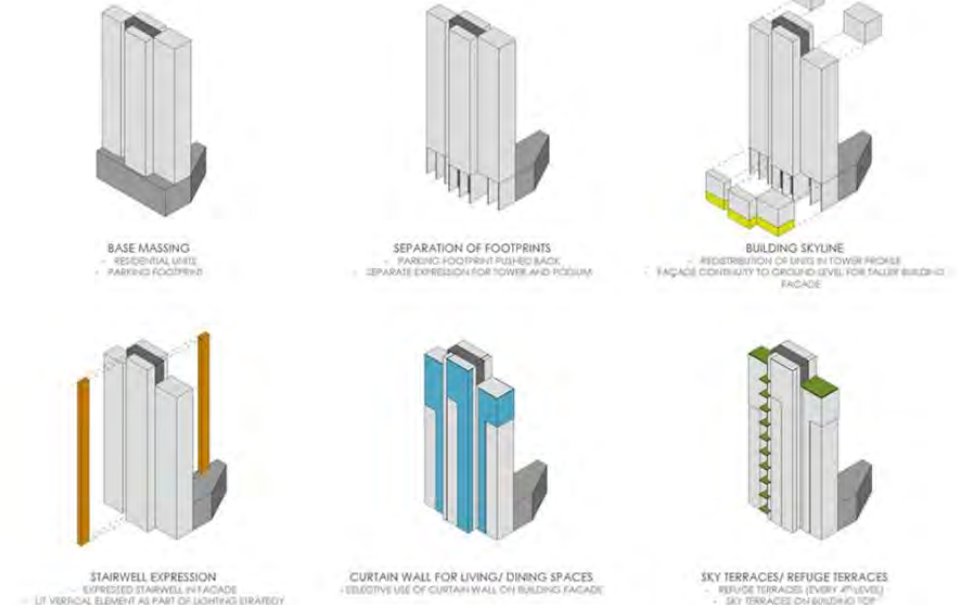
UNIT PLAN VARIATION

PROJECT TYPE: CONDOMINIUM TOWER
 GFA: 34,078 SQM
 BLDG HT: 142 MTS
 TOTAL FLRS: 44
 UNIT MIX: 2 BRM, 3BDRM, 4BDRM

OPTION 1



OPTION 2





LOCATION: WORLI, INDIA

PROJECT TYPE: RESIDENTIAL CONDOMINIUM

GFA: 120,000 SQM

BLDG HT: 220 MTS

TOTAL FLRS: 58

UNIT MIX: 2 BRM, 3BDRM, 4 BDRM





NISEKO MURASAKI HOTEL

HOKKAIDO | JAPAN

CLIENT | PVT DEVELOPER

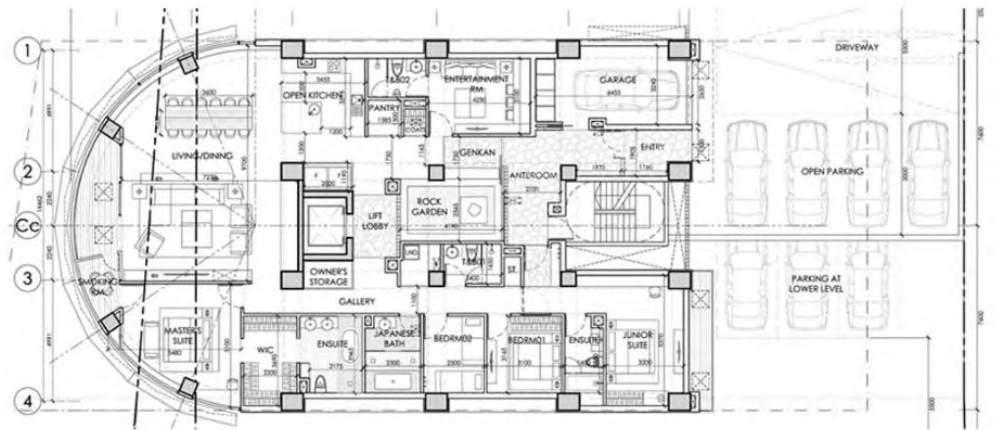




THE SITE

PROJECT TYPE: SKI HOTEL
 GFA: 2,573 SQM
 BLDG HT: 24.50 MTS
 TOTAL FLRS: 6.5
 UNIT MIX: 3BDRM, 4BDRM
 SKI FACILITIES, ONSEN, CAFETERIA

LOCATED IN THE SKI RESORT TOWN OF NISEKO, JAPAN, THE HOTEL FEATURES LUXURY UNITS OF 3 AND 4 BEDROOMS, WITH INTERIORS INSPIRED BY JAPANESE CULTURE AND NISEKO LANDSCAPE.



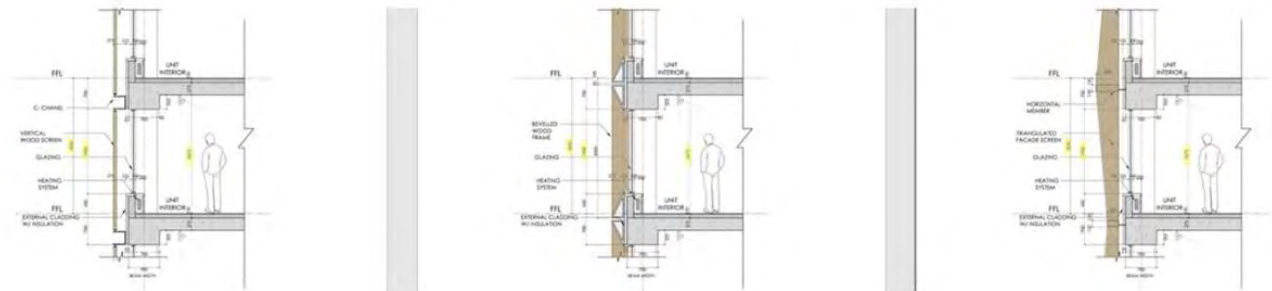
TOWER PLAN

PART OF THE OVERALL DESIGN CONCEPT IS IN REFERENCE TO A TRADITIONAL JAPANESE HOUSE, OR RYOKAN. EACH UNIT FEATURES A GENKAN, ITS OWN PRIVATE ONSEN WITH VIEWS OF A GARDEN OR THE SKI SLOPES. THE LIVING AREAS ARE EXPANSIVE, WITH LARGE PICTURE WINDOWS OFFERING A COMMANDING VIEW OF THE MOUNTAINS AND THE RESORT.

AMENITIES INCLUDE SKI RENTING FACILITIES, CAFETERIA, GIFT BAR AT THE GROUND FLOOR, AND COMMUNAL SAUNA AT THE ROOF DECK.

THE FAÇADE AND OVERALL BUILDING ENVELOPE FEATURES SUSTAINABLE WOOD CLADDING SYSTEM. THE FRONT OF THE BUILDING IS INSPIRED BY JAPANESE LANTERN, IN WOOD LAMINATED CLADDING FINISH. EACH FRAMING PANEL IS DEVICED WITH HEATERS TO COUNTER SNOW DURING WINTER SEASON.

THE RESULT IS AN ARCHITECTURE THAT EMBRACES MODERNITY WITH RESPECT TO TRADITION.



SECTION DIAGRAMS



FAÇADE SCHEMATICS







HAND SKETCHES

CONCEPTUAL LANDSCAPE SKETCH



HAND SKETCHES

AS PERSONAL HOBBY



CURRICULUM VITAE

NEIL ANTHONY SALCEDO

Mayfair Place Sukhumvit 50 Bangkok, Thailand
email: neilsalcedo020@yahoo.com
mobile: +66926508763 (Thailand)



OBJECTIVE

• A competent and knowledgeable person in the field of Architectural Design, seek employment as an Architectural Designer where I can contribute my skills and strength in the design related environment.

STRENGTHS AND SKILLS

- Technically knowledgeable in the field of architectural design, construction drawings, and presentation content.
- Creative flair and an eye for generating sophisticated visual imagery for presentations, such as 3D concept rendered images, detailing, cinematic animation using Enscape, and overall quality control of presentation materials.
- AutoCAD/ Microstation, Sketchup- Vray. Enscape and Animation, Adobe Photoshop. MS Office and similar applications.

PROFESSIONAL PRACTICE:

- October 2010- Present

HB Design Pte Ltd. (Hans Brouwer Design), Bangkok, Thailand: www.hbdesign.biz

- June 2010- October 2018

HB Design Pte Ltd. (Hans Brouwer Design), Singapore: Senior Architect

-Key role and responsibility includes QAQC (quality assurance and quality control) of design matters across the spectrum of HB Design's project activities not only with our Singapore office, but also our Bangkok and Jakarta Offices.

- Involved in many high-end residential and mixed-use developments in multiple countries throughout Southeast Asia.

Responsible for overseeing many of the associated co-ordination and executive responsibilities involved.

Attend meetings and resolves issues or concerns that the client may have, demonstrating professional abilities and potential in dealing with a wide variety of project related issues.

- November 2007- June 2010: DP Architects Pte. Ltd, Singapore www.dpa.com.sg

- responsible for preparation of architectural working drawings and drawing presentations,

coordinate plans and meetings with consultants and contractors, presentations and daily updates of construction monitoring reports and RFI's for the Resorts World at Sentosa Project- an Integrated Resort housing the Universal Studios Singapore, high end Hotel Chains (Hard Rock Hotel, Hotel Michael, Festive Hotel, Crockfords Tower and Levie featuring world class amenities.

- September 2006- July 2007- Palafox Associates, Manila Philippines

- started as an apprentice, then as a design assistant. Prepared architectural drawings, design development plans and construction drawings both local and international projects for the Architecture Production Department.

- January 2006 AC Trojan Industries Inc. - worked as a designer and coordinator in the architecture production department.

- May – December 2005 Palafox Associates- worked as an architectural assistant/ apprentice in the Architecture Design Department. Prepared architectural drawings for various residential and commercial projects.

EDUCATION:

College: Rizal Technological University2002 - 2006

Bachelor of Science in Architecture

Manila, Philippines

Far Eastern University..... 2001 - 2002

Bachelor of Science in Architecture

Manila, Philippines

Secondary: Pasig Catholic College1997 - 2001

Manila Philippines

ORGANIZATIONS AND SEMINARS

- United Architects of the Philippines- Singapore Chapter: 2015-present: member
- World Architecture Forum 2015 Marina Bay Sands Singapore: delegate
- Tadao Ando: Asia on the Move Lecture: NUS March 2013
- May 2004 Micro CADD Technologies Inc. Makati- AutoCAD training and seminar.
- February 2004- Arkitekturang Filipino Seminar and Design Competition- First Prize
- World Without Wars Campaign- Design Competition- First Prize, mixed media category

PROJECT PUBLICATIONS:

SINGAPORE

Responsible for coordination, development of Architectural Working Drawings, documentation of the following projects:

- Resorts World @ Sentosa; Singapore- integrated resort in Singapore's Sentosa Island, Universal Studios Singapore and Hotel Chains:
 - -Hard Rock Hotel,
 - Maxims Hotel
 - Festive Hotel
 - Hotel Michael and Casino
 - Levie and Theme parks.
- Sentosa Cove Residence- a high end residential development in Sentosa Cove Singapore

INDIA

Responsible for conceptual design, schematics, design development, working drawing, coordination and documentation of the following projects:

- Residential Building
 - Client: TATA Housing- high end residential block in Mumbai
- Mixed Use Residential Building
 - Client: Sheth Corp- high end residential block in Mumbai
- Sangria Residential and Commercial Building
 - Client: Marvel Realtors- high end residential block in Pune India.
- Marvel Arco Condominium
 - Client: Marvel Realtors- high end condominium on Pune, India- LEED award.
- Marvel Cerise Condominium
 - Client: Marvel Realtors- high end condominium on Pune, India
- Simrose Tower
 - Client: Marvel Realtors- high end Residential Apartment in Pune India.
- Marvel Edge
 - Client: Marvel Realtors- mixed use- commercial and apartment block in Pune, India
- Marvel Ribera
 - Client: Marvel Realtors- high end condominium in Pune, India.
- Marvel Marvel Trueno
 - Client: Marvel Realtors- mixed use commercial building in Pune India.

INDONESIA

- Batam Plot Masterplan A
 - Masterplan development for residential housing in Batam Indonesia
- Batam Subdivision Masterplan
 - residential and mixed use masterplan in Batam Indonesia
- High End Residential Development
 - Conceptual Design, Design Development, Working Drawings, Project Coordination
 - Of a residential development in Jakarta,Indonesia.

DUBAI AND THE MIDDLE EAST

Responsible for coordination, development of Architectural Working Drawings, documentation of the following projects:

- Al Mina Hotel, Abu Dhabi UAE- 20 storey residential and commercial building, residential and office towers and 5 storey commercial podium.
- United Motors Company, Dammam UAE
- United Motors Company, KSA
- United Motors Company, Jeddah UAE
- Jeddah Mall- 6 storey commercial centre

JAPAN

- Responsible for designing a ski-themed high end hotel in Niseko, Japan

THAILAND

- High End Residential Development in Bangkok Thailand
 - Conceptual Design, Design Development, and Façade Design for a mixed use development in Bangkok Thailand

VIETNAM

- Responsible for the design development and landscape design for Mixed- use Commercial + Hotel Development in Ho Chi Minh, Vietnam

THE PHILIPPINES

Responsible for coordination, development of Design and Architectural Drawings, documentation of the following projects:

Client: Ayala Land:

- Mixed Use high End Residential Building
- Redevelopment of the Peninsula Manila and Premiere Residential Block
- Ayala Bravo, Anchor, Azuela Cove, Lima, Garnett under the luxury premiere brand

Client: Robinsons Land

- Mixed Use Residential Building
- Robinsons Tagaytay- Commercial and Hotel Complex-
- Robinsons Pioneer Strip, Edsa Mandaluyong
- First Philippine Industrial Park, Batangas City

- Plaza Crest De Luxe Condominium, Las Pinas- 5 Storey Condominium
- DO Plaza Garden Villas 4, 5,6,7,8& 9, Las Pinas- 4 Storey Residential Villas
- Versailles Residential Development, Paranaque City
- Divine Mercy Healing Chapel, Sorsogon
- The Ritz Boracay Hotel, Boracay Island- Resort Hotel Complex
- June 2006 Interior Renovation- Two Storey Residential White Plains Subdivision,
- Manila • May 2006- Two Storey Residence: Modern Inspired Residential, Cainta Manila
- June 2006- Condominium Residential Unit Design


HBDESIGN

 HB DESIGN PTE LTD
 SINGAPORE
 COMPANY REG NO.
 199703251C

 INFO@HBDESIGN.BIZ
 WWW.HBDESIGN.BIZ

May 04, 2018

To Whom It May Concern

Neil started working at HB Design Pte Ltd on **June 16th, 2010** and remains with us to-date. During this time, he has been involved with a variety of projects in Singapore, Thailand, Vietnam, Dubai and India. His responsibility extends from concept design, working up the planning, design development, and construction documentation.

During these **almost 8 years**, Neil has been the project architect for many high-end residential and mixed-use developments in multiple countries throughout Southeast Asia. He is responsible for overseeing many of the associated co-ordination and executive responsibilities involved. He attends meetings and resolves issues or concerns that the client may have, demonstrating his professional abilities and potential in dealing with a wide variety of project related issues.

Neil has proven to be an exceptional employee with excellent interpersonal skills. He works independently or in a group setting and has demonstrated over the years with HB Design his ability to successfully combine problem solving with elegant designs and stunning presentations. He was recently promoted to "Senior Architect" with a key role and responsibilities including QAQC (quality assurance and quality control) of design matters across the spectrum of HB Design's project activities not only with our Singapore office, but also our Bangkok and Jakarta Offices.

Neil has been a valuable asset to HB Design and we strongly recommend him and look forward to his continued contribution to both HB Design and the architectural profession.

Please do not hesitate to contact me, should you have any further queries.

Yours sincerely,
 Hans Brouwer
 Founder and Managing Director
 HB Design Pte Ltd

 Hans Brouwer

 HB DESIGN PTE LTD
 SINGAPORE

 8 JALAN KILANG TIMOR,
 #02-01 KEWALRAM HOUSE,
 SINGAPORE 159305
 TEL : +65 6476 1323
 FAX: +65 6475 2373

 HB DESIGN CO LTD
 BANGKOK

 18TH FLOOR, UNIT 1804 THE MILLENNIA,
 82 LANGSUAN ROAD, LUMPINI, PATHUMWAN,
 BANGKOK 10330
 THAILAND TEL: +66 02 651
 8844/5

 HB DESIGN CO LTD
 PHUKET

 74/25 MOO 3 KAMALA,
 PHUKET 83150, THAILAND
 TEL : +66 76 279 595
 FAX: +66 76 279 596



HBDESIGN

HB DESIGN PTE LTD
SINGAPORE
COMPANY REG. NO.
199703251C

INFO@HBDESIGN.HK
WWW.HBDESIGN.HK

07 August 2018

Re. Professional Endorsement- Mr. Neil Anthony Salcedo

To Whom it may Concern,

I have had the pleasure of working directly with Neil for the past 8 years on several projects under HB Design Singapore.

He is equipped with a strong work ethic, an eye for detail and strong design skills are his strongest asset. As an Architect, he maintains a high quality of work through clear communication with all team members and follows through on items directly pertaining to his areas of expertise.

He continually thinks beyond the scope of the project at hand and easily grasp on the big picture goals. His passion for his field and the desire to share his knowledge with the team members shines through his daily interactions.

His approach, responsiveness and comprehension of the project as a whole make him an excellent teammate and ideal team leader. His diligence, enthusiasm and pleasant demeanor are a winning combination. I am confident and would strongly recommend him.

Should you need additional clarification, please do not hesitate to reach out to me directly.

Best regards!

Chiara Bergamini
Project Director
HB Design Pte Ltd

Chiara Bergamini

THANK YOU

neilsalcedo020@yahoo.com