

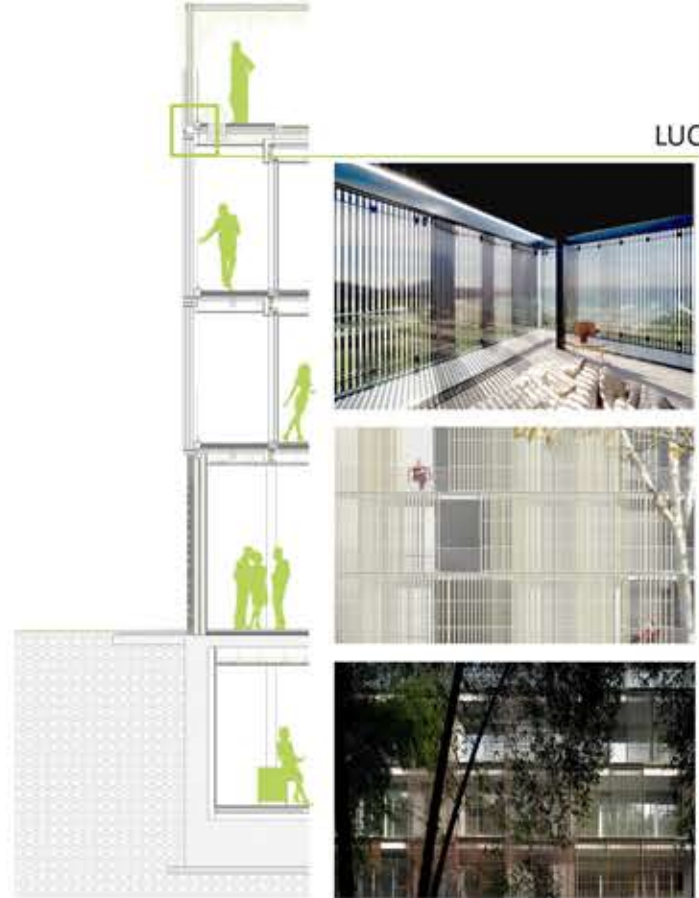
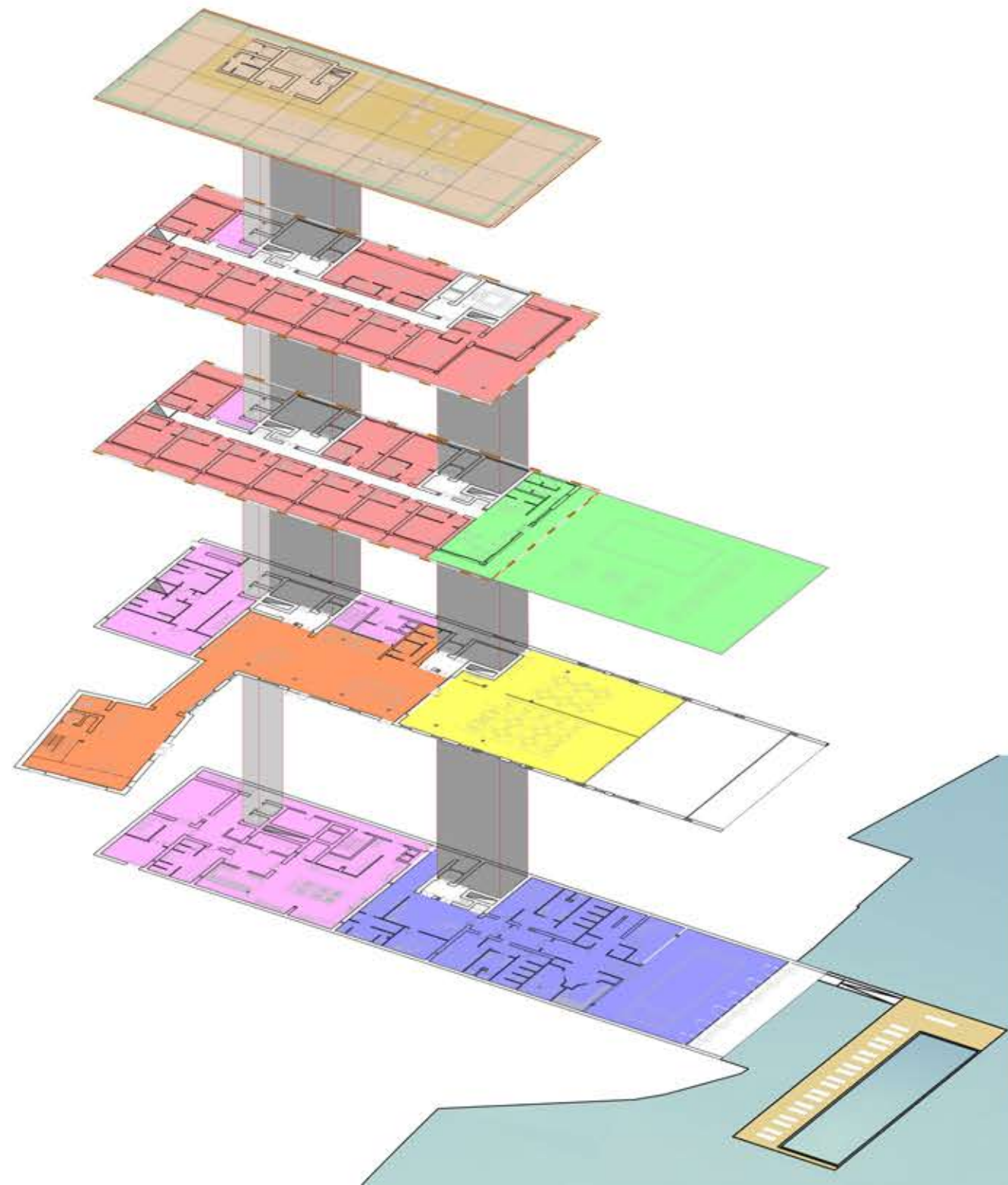
FEDERICOALBONICO
ARCHITECTURE ENGINEERING DESIGN



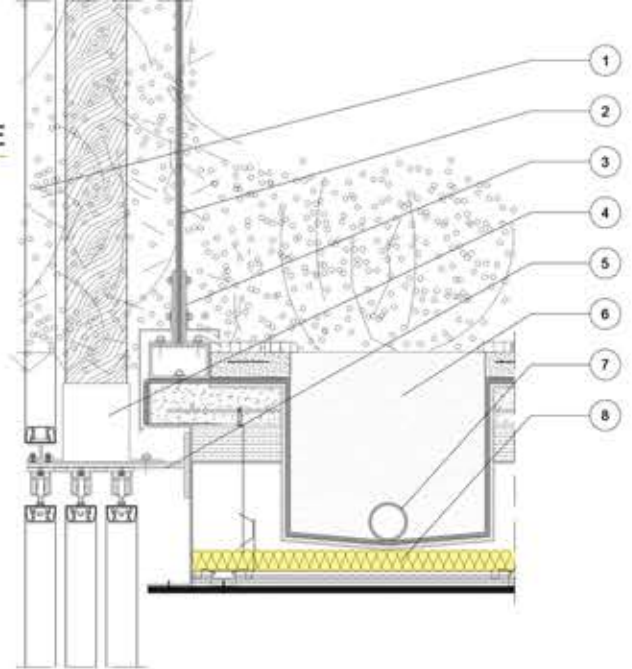
SHIPYARD ABBATE
graduation thesis





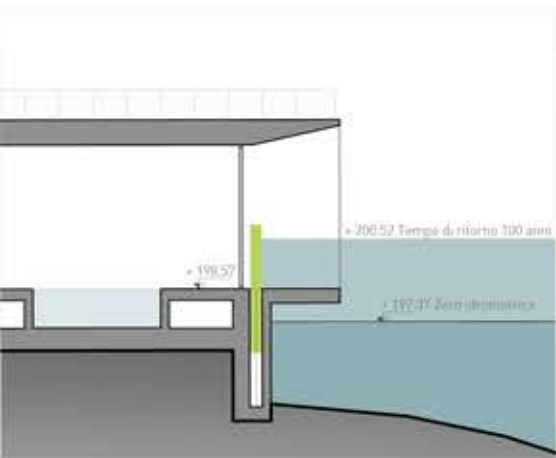
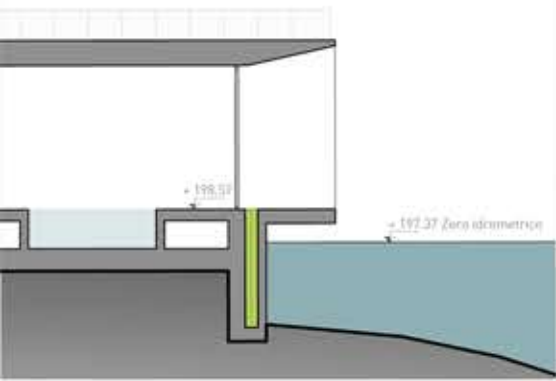


LUCE

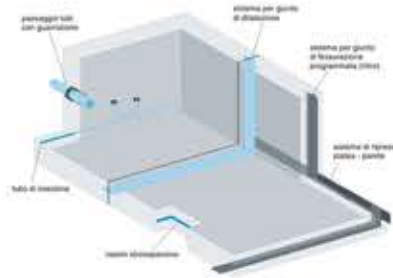


- 1 Parapetto in lamelle verticali di cedro rosso canadese
- 2 Parapetto in vetro stratificato
- 3 Supporto in acciaio zincato
- 4 Bicchieri in acciaio zincato sez. 130x130 mm
- 5 Staffa di supporto del sistema oscurante in acciaio zincato, sp. 5 mm
- 6 Fioriera in acciaio zincato dim. 40x40x120 cm impermeabilizzata dall'interno
- 7 Tubo di scarico acqua fioriera in PVC diametro 75 mm
- 8 Isolante in lana minerale di roccia, tipo Knauf Isorocchia

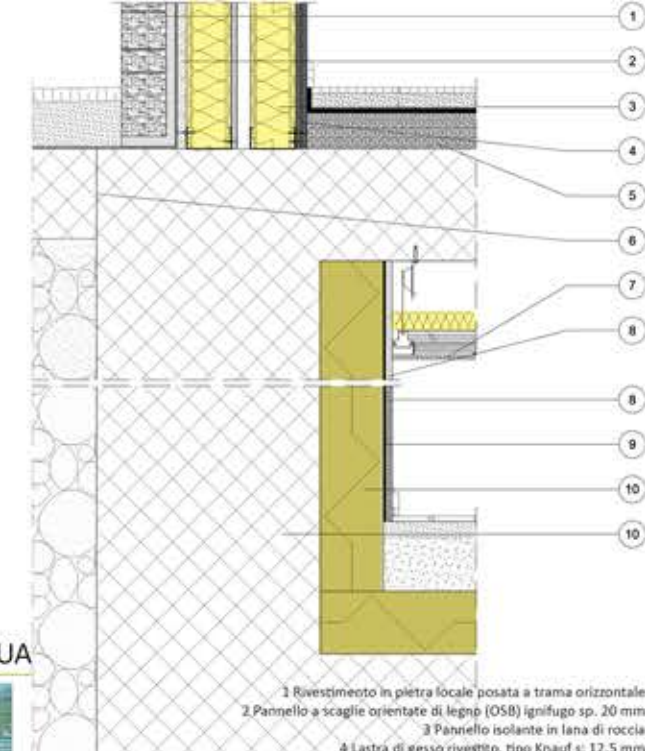
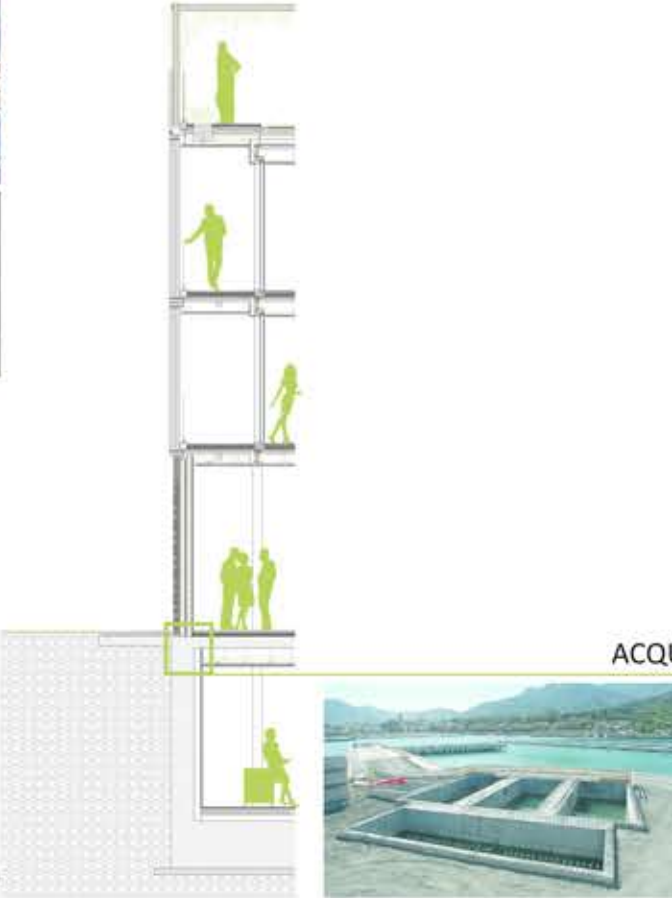
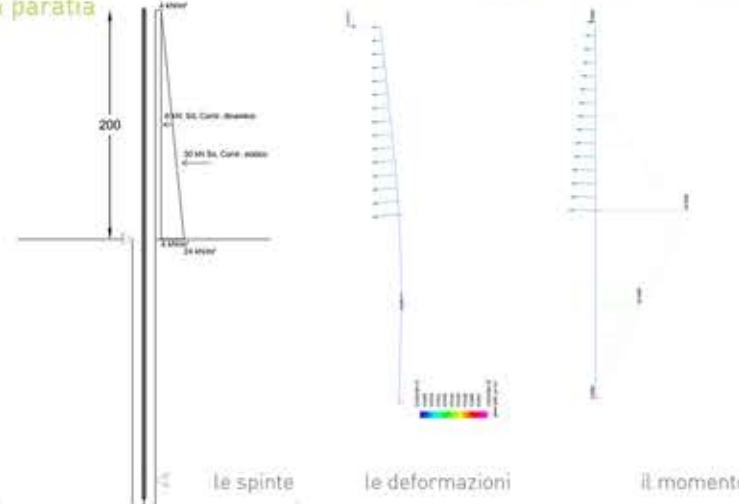




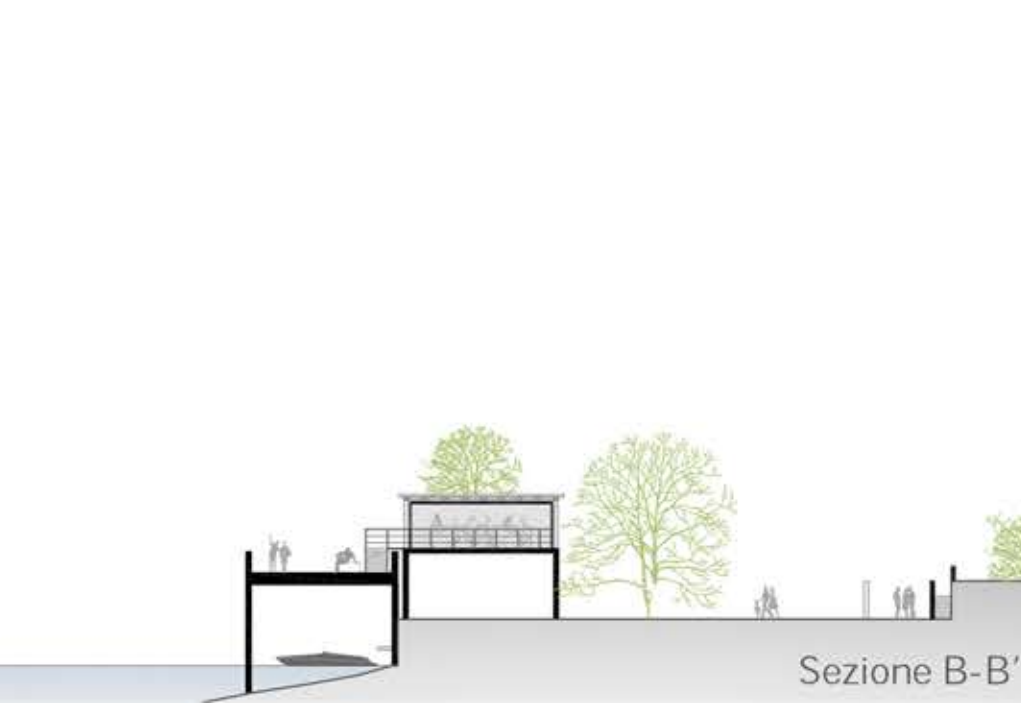
Il sistema vasca bianca



La paratia



- 1 Rivestimento in pietra locale posata a trama orizzontale
- 2 Pannello a scaglie orientate di legno (OSB) ignifugo sp. 20 mm
- 3 Pannello isolante in lana di roccia
- 4 Lastra di gesso rivestito, tipo Knauf s: 12.5 mm
- 5 Massetto termoisolante alleggerito con perlite espansa
- 6 Marciapiede in cemento debolmente armato gettato in opera
- 7 Pannello di gesso rivestito fonoassorbente, foratura 10.2%
- 8 Intonaco cementizio
- 9 Barriera al vapore in pellicola d'alluminio
- 10 Isolante termico in poliuretano espanso tipo Stiferite CLASS B, sp. 140 mm
- 11 Struttura in cemento armato impermeabile Drytech





PRIVATE VILLA ON LAKE COMO
design and construction support











47.742 mq
in construction

5 towers
640 apartments



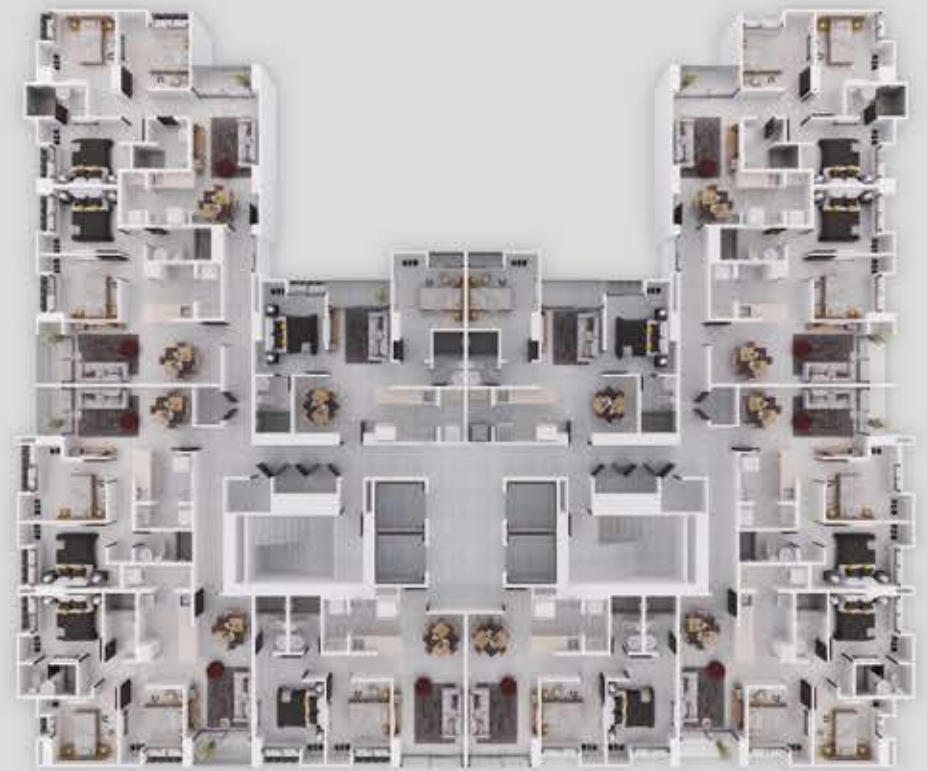


TORRE ATHAS
technical design and coordination





35 stories
adults and baby pool
gymnasium
security gate
ready for construction





TORRES OLYMPIA
technical design and coordination





10 condos
tower A / tower B
pool
sports field
security gate
playground
in construction





19 luxury units
front beach apartments
3 stories
natural ventilation
in construction







PRIVATE VILLAS
confidential owners



federicoalbonico.com
contact@federicoalbonico.com
+39.346.6370091