

ARCHITECTURE PORTFOLIO
THÂN TRỌNG NHÃ NGÂN

RESUME

THÂN TRỌNG NHÃ NGÂN

Female | Born in 1995

Email: thantrongnhangan@gmail.com

Tel | Viber | Whatsapp: (+84) 81 864 3154

EXPERIENCE

tho.A atelier | 2021 - 2023

Architect

Inrestudio | 2019 - 2021

Junior Architect

Inrestudio | 2018

Intern

IIA Architects | 2017 - 2018

Intern

E.nd Architects | 2015 - 2016

Intern

SKILLS

Design

AutoCAD, SketchUp, Enscape (Intermediate)

Revit, Lumion (Basic)

Graphic

Photoshop, Indesign, Illustrator

LANGUAGES

Vietnamese

English

EDUCATION

Hue University of Sciences

Hue, Vietnam

2013 - 2019

Bachelor of Architecture

Marche Polytechnic University

Ancona city, Italy

3-6/2018

Exchange student

ACTIVITIES

International Finsa Award | 2017

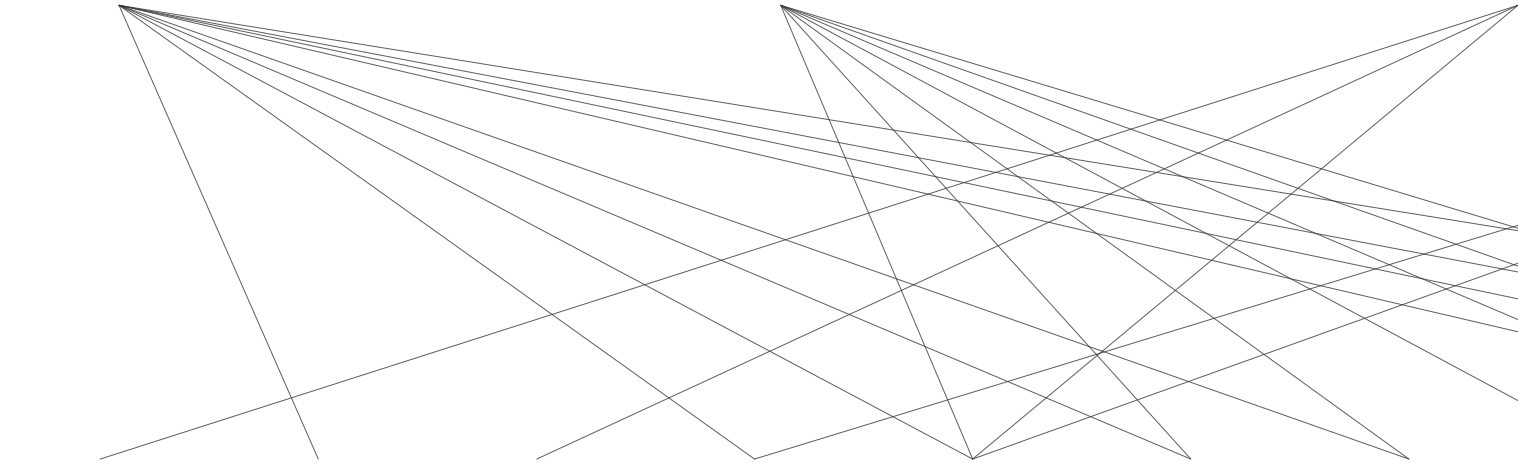
International VELUX Award | 2016

ARCHITECTURE JOURNEY

**PRE-DESIGN
RESEARCH**

SCHEMATIC DESIGN

DESIGN DEV



QBO
office



CAT
masterplan



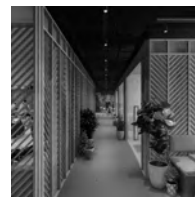
TDO
office



RFR
bar/
restaurant



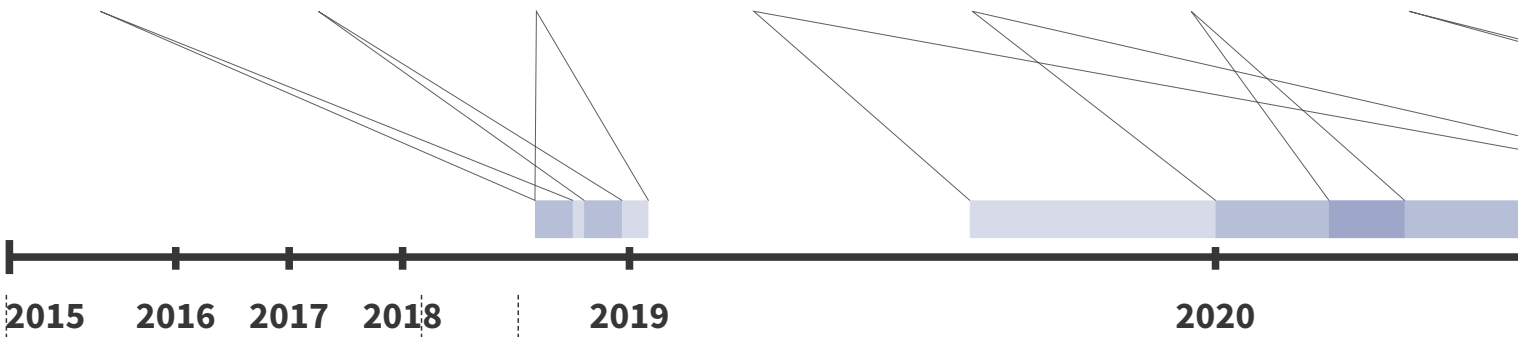
**ĐÔNG-HỐI
OFFICE**
office



MAISON
office



**BATH
HOUSE**
publicspace



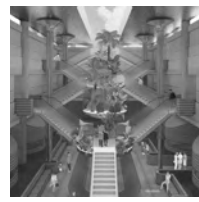
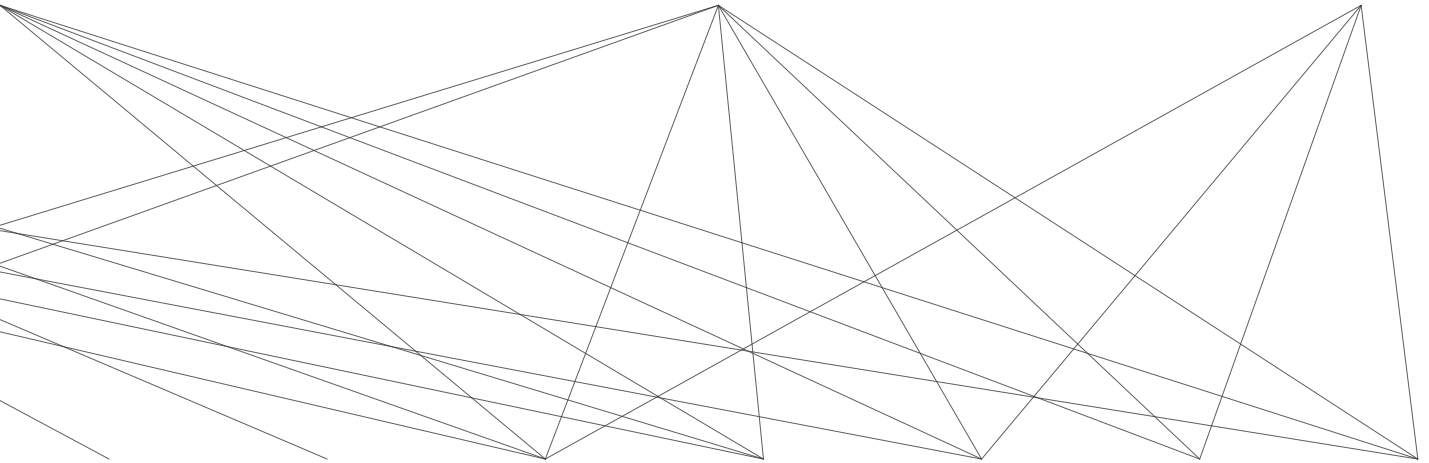
HUẾ, VN

**ANCONA, IT
PARIS, FR
VENICE, IT**

DEVELOPMENT

CONSTRUCTION DOCUMENT

CONSTRUCTION ADMINISTRATION



HA NHI VILLA
residential

THE GYM
publicspace

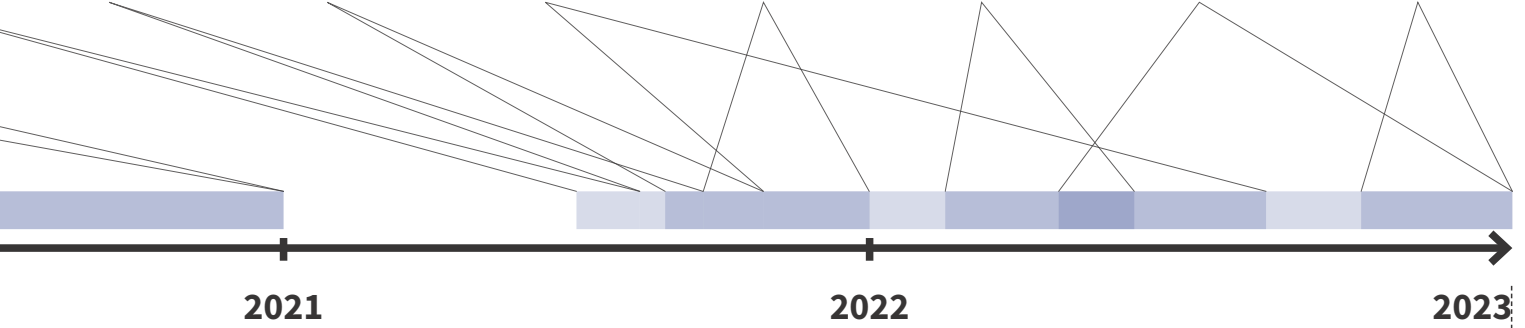
TWIN VILLA
residential

ROOFTOP
bar/
restaurant

BÁNH-MÌ CART
object

DI LINH MALL
commercial

ICE PARK
F&B retail



2021

2022

2023

HỒ CHÍ MINH, VN

BANGKOK, TH





SELECTED WORKS

TWIN VILLA
2021 - 2022



page 01

THE BATH HOUSE
2021



page 13

THE ICE PARK
2022



page 23

BÁNH-MÌ CART
2022



page 31

ĐỒNG HỚI OFFICE
2020



page 37

MAISON OFFICE
2020



page 43

TWIN VILLA

Year | 2021-2022

Location | District 9, Ho Chi Minh city

Typology | Residential

Status | Completed

Participated work | Project coordinator, site supervisor, designer

This half of a semi-detached house is located in an old residential area that has slightly sloped terrain and a high density of greenery. Thus, the area is embraced by a cool atmosphere similar to highland weather. The owner is a family of European - Vietnamese couple and their kid, who have the hobby of collecting pieces of furniture. They gave the request to renovate the existing house into a Spanish terracotta vibe space. Also, the interior has to be colorful with rough finishing as the owner's interests and contain reused materials, especially old wood. Besides space modification, the design team suggested using mostly handcrafted tiles instead of industrialized ones, to harmonize all elements of the space. Various types of tiles were collected from different suppliers, bringing the possibility of many pattern combinations, which was realized by skilled workers under strictly supervising.



Photo by Spoil Studio

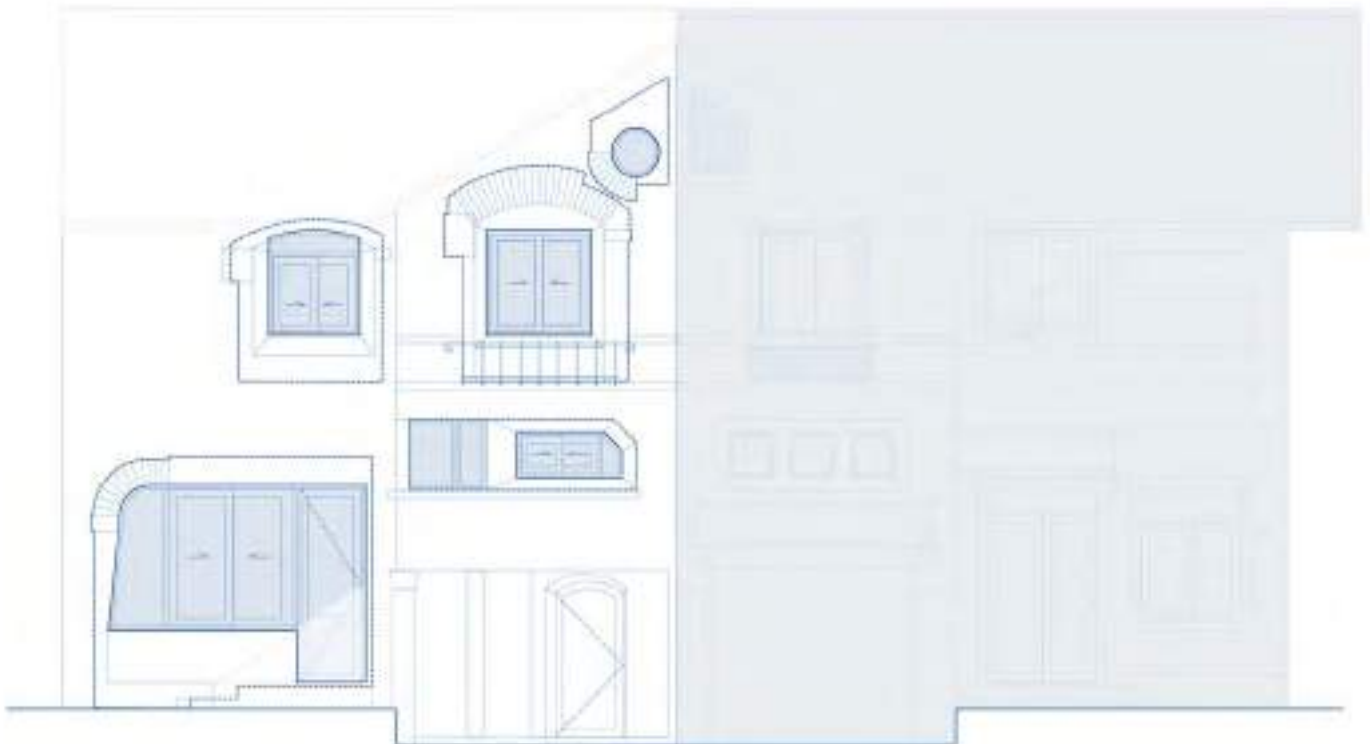


Monodramatic/Crowd - Daisuke Takakura



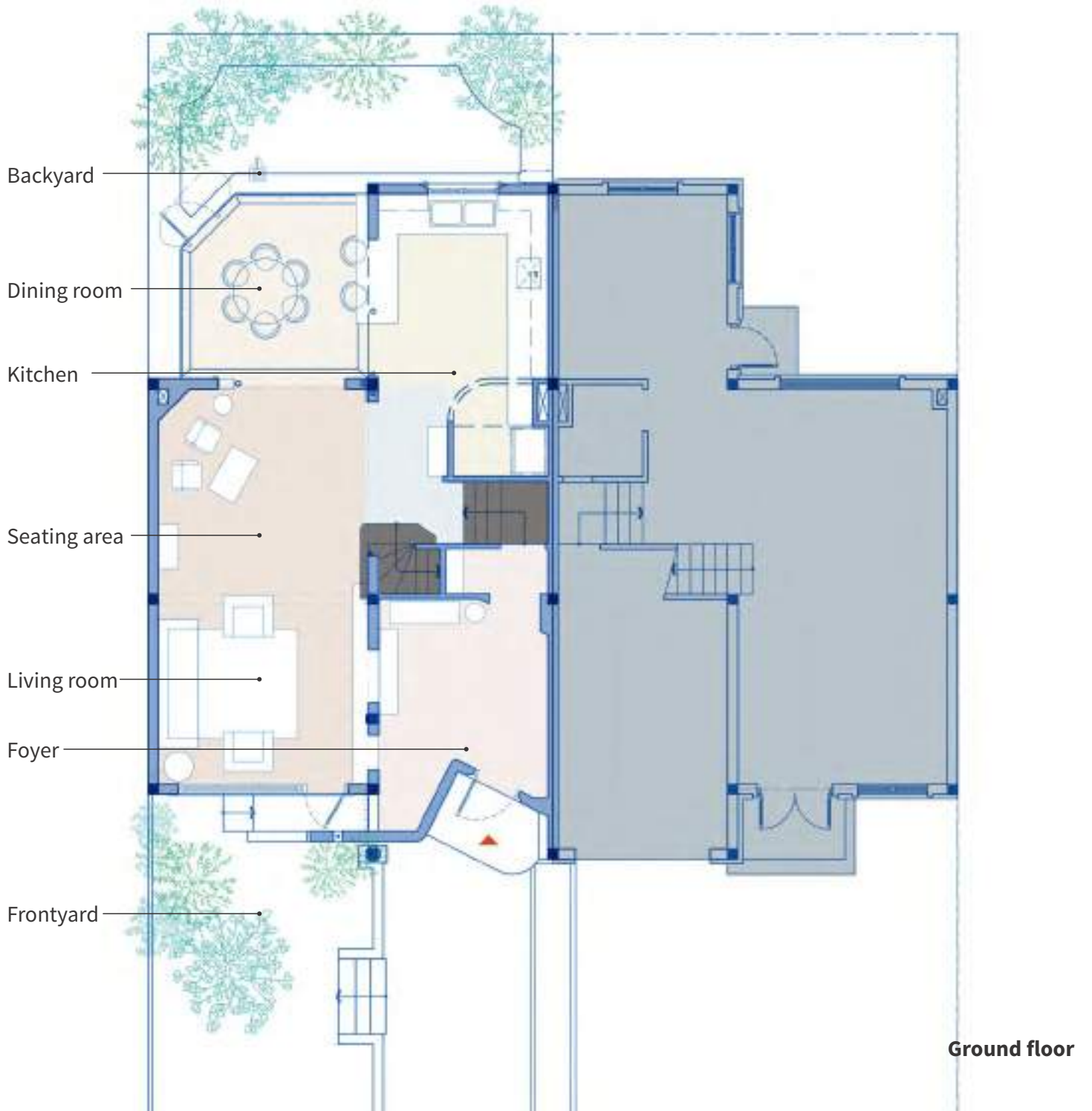
Two Fridas / Frida Kahlo

The neighborhood is full of cloned design houses, which is typical in nowadays urban planning. The semi-detached houses are like twins, usually, they look the same until one day, personality development begins to give them different looks



Elevation modification

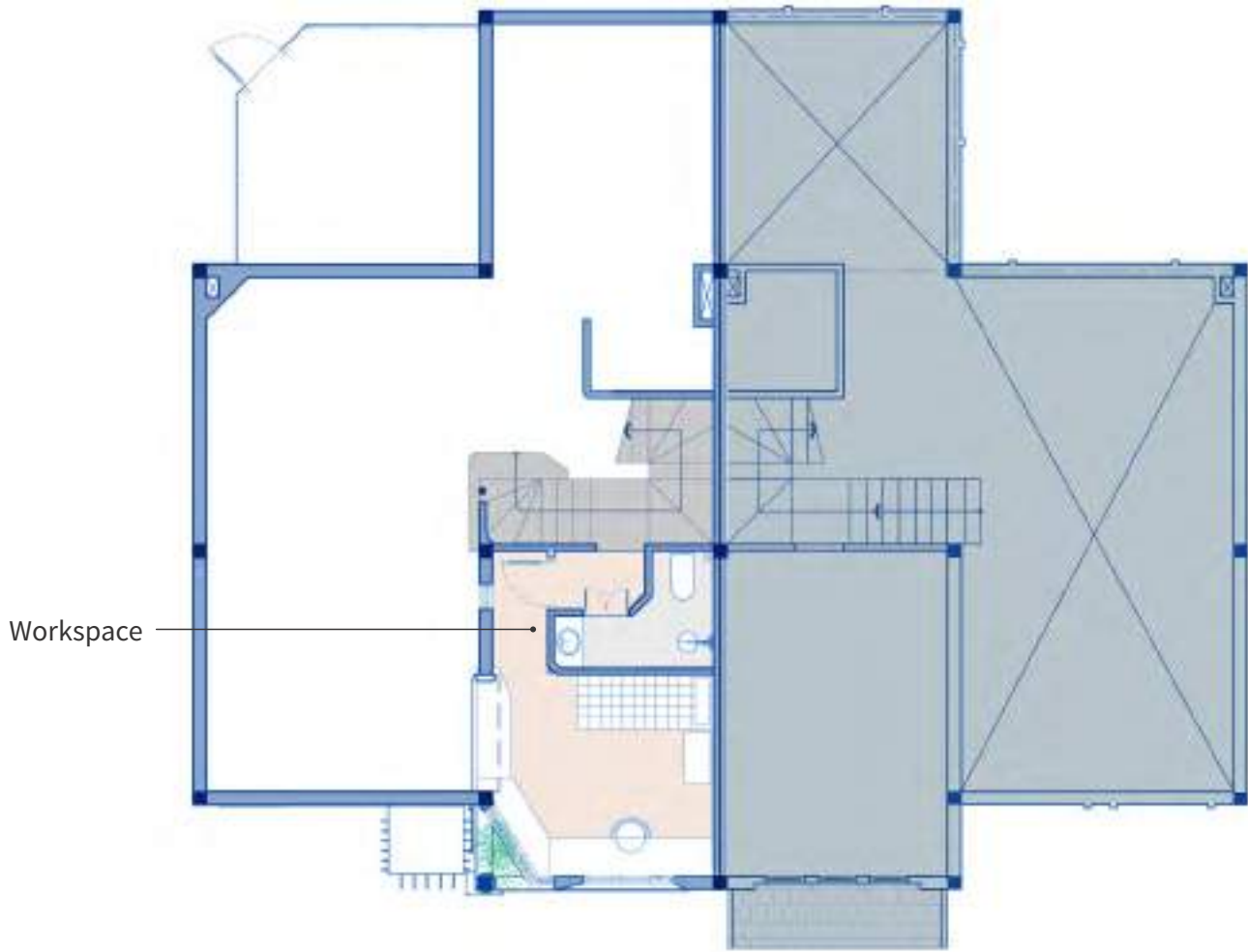






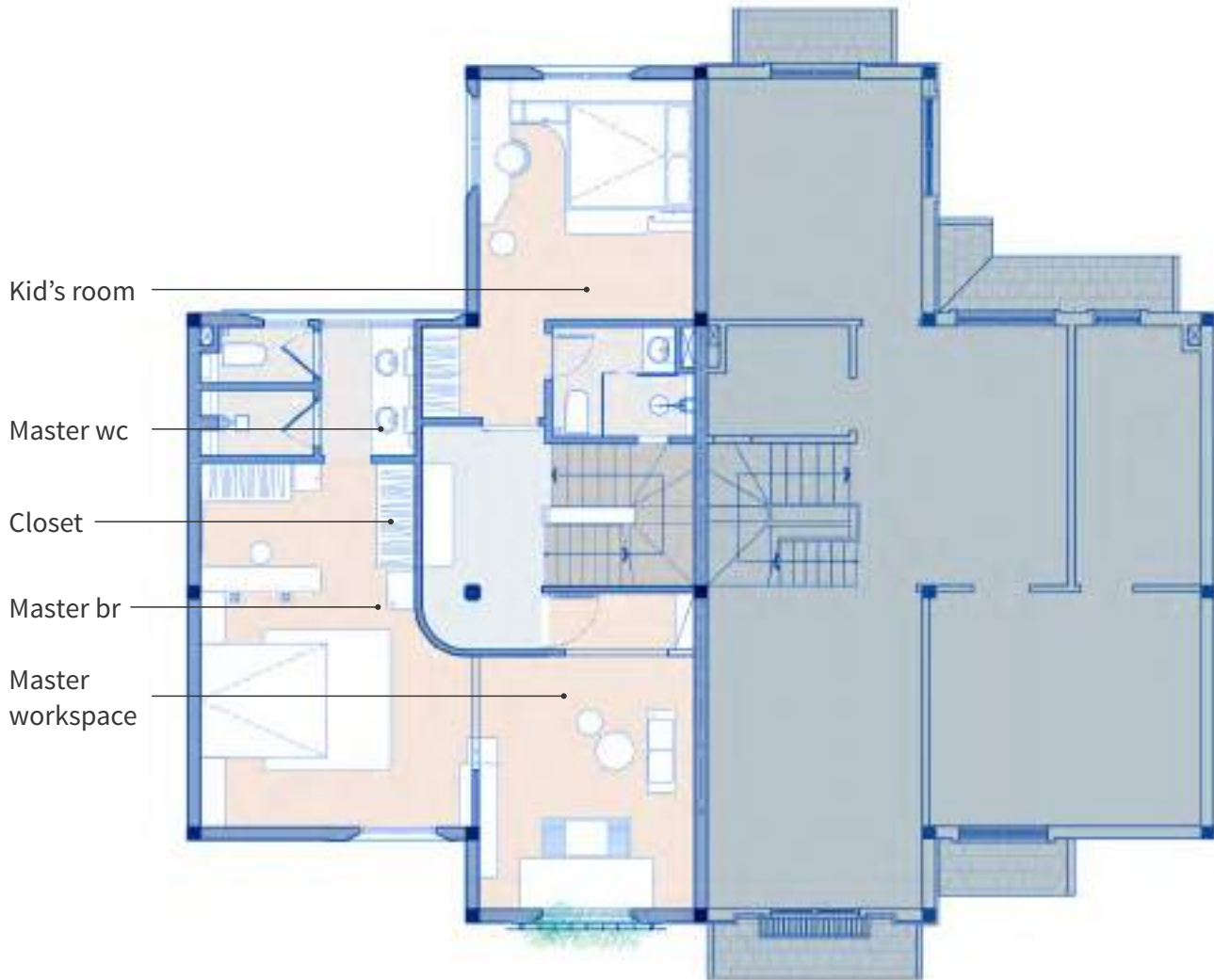






Workspace

Mezzanine floor



Kid's room

Master wc

Closet

Master br

Master
workspace

Second floor



The master bedroom is discreetly accessed through a buffer space. Next to the sleeping area is the owner's workspace



A small attic is installed in the child's bedroom, creating a "territory" with diverse spaces for children to enjoy their own creative world

THE BATH HOUSE

Year | 2021

Location | Muong Lo, Yen Bai

Typology | Public space

Status | Concept design

Participated work | Designer

This bath house is part of a new urban development plan in Muong Lo, Yen Bai province. Located on a street that has a design theme inspired by the Ha Nhi ethnic people, which is one of the popular ethnic groups living in Muong Lo, the building has a simple shape sharing the similarity to their notable traditional rammed earth house. The bath is surrounded by a system made of interlocking “door frames” from Ha Nhi people’s houses. The scene of a calm hot mineral water surface and a misty atmosphere swirling with the surrounding wooden frame evokes the image of a traditional ceremony to worship the forest god of the Ha Nhi people.

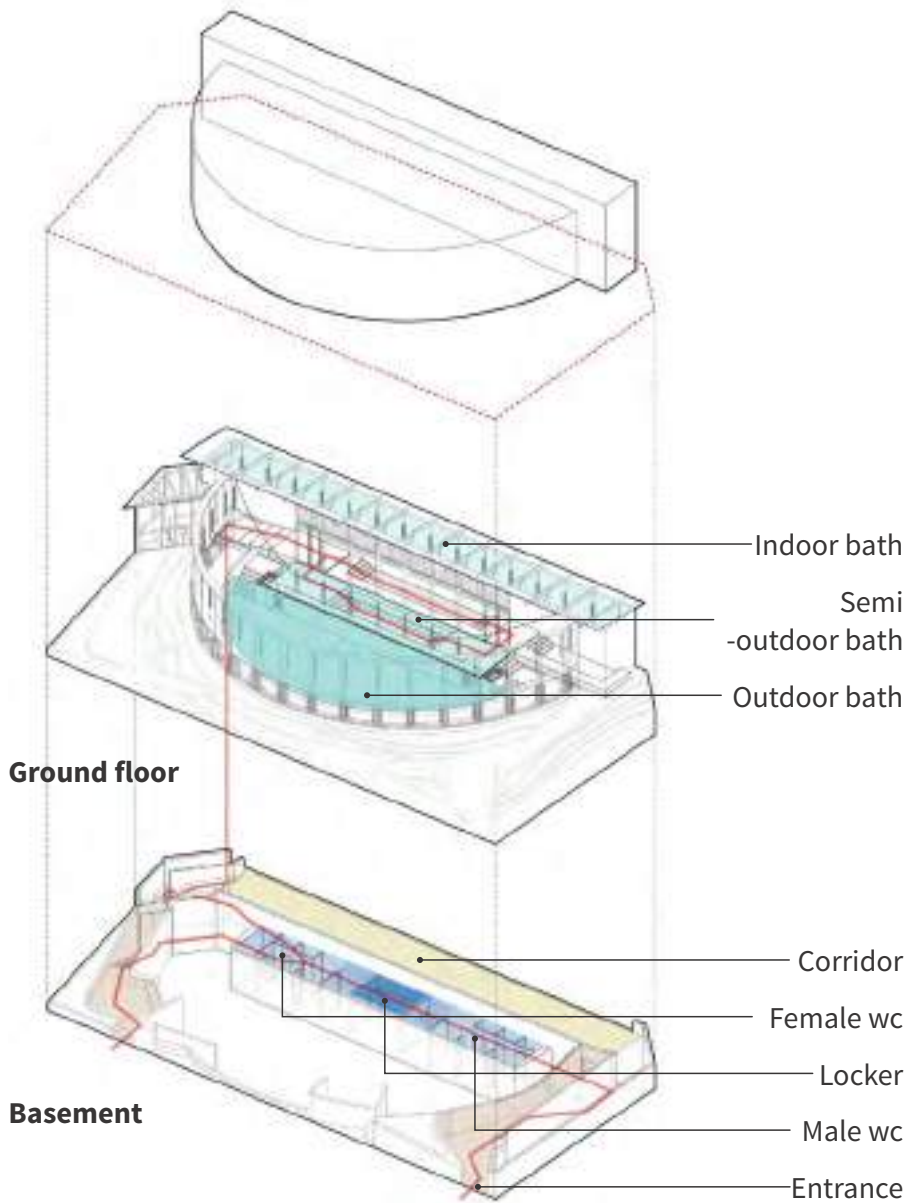
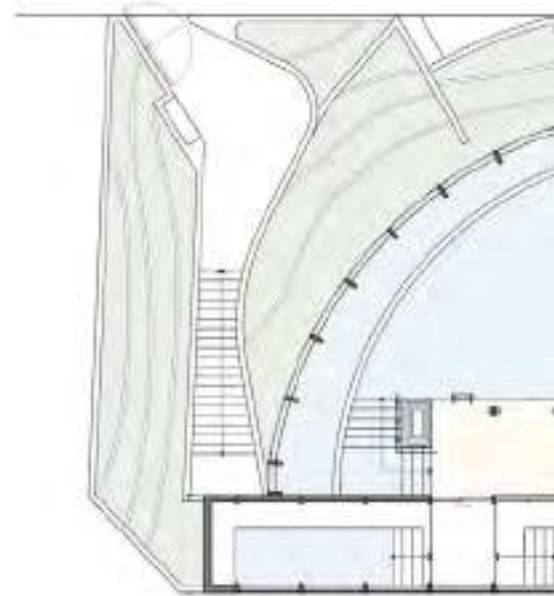


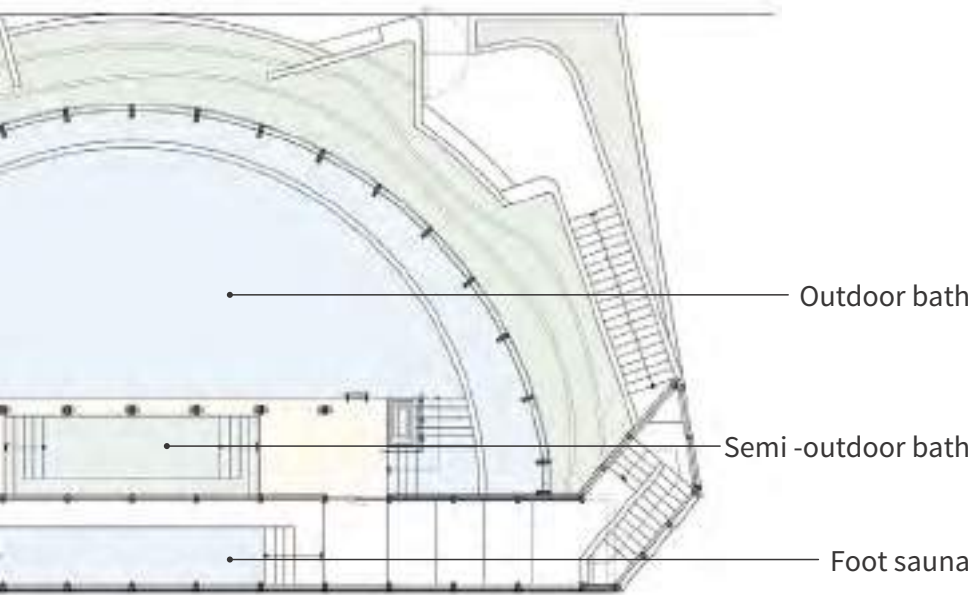


Ha Nhi traditional house



Traditional rattan object





Ground floor





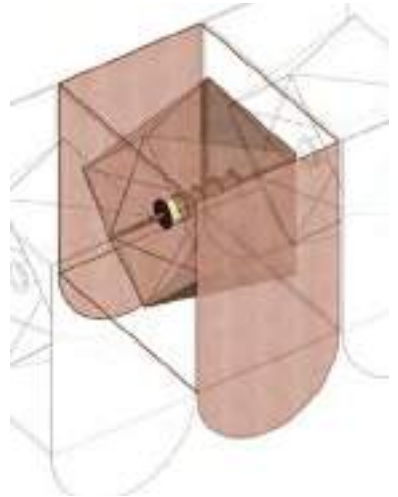
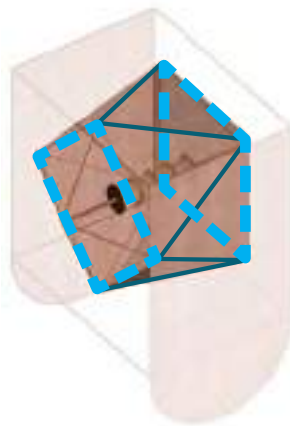
+



The wooden structure surrounding the bath is made of interlocking “door frames” from Ha Nhi people’s houses







The hanging lamp has a “core” that is structured to imitate the rotating movement of the loom of the local ethnic people

The second layer of the lamp was inspired by the image of drying fabric after dyeing. Lamp units of different sizes are connected like bars covered by hand-woven fabrics



Indoor bath



Semi-outdoor bath



The main bath area



Photo by Spoil Studio

THE ICE PARK

Year | 2022

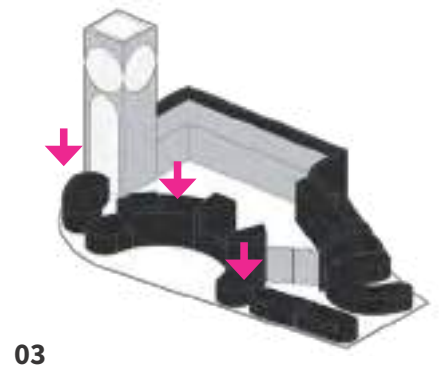
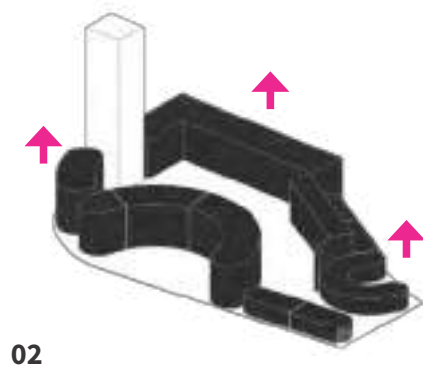
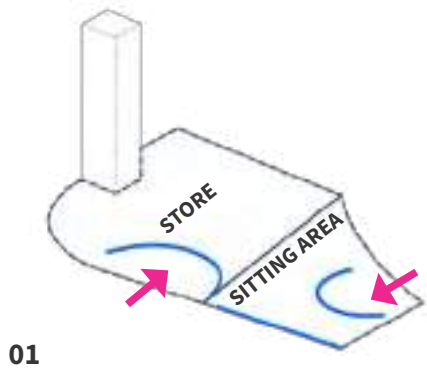
Location | Binh Tan District, HCMC

Typology | F&B retail store

Status | Completed

Participated works | Project coordinator, designer

This 40m² ice cream shop is hosted in a shopping mall quite far from the city center. The task was to find an identity design for the shop, as well as fit the strict design regulations of the mall. As providing FnB service the shop also serves as a resting space during the customers' trip, which can be thought of as a park in the heart of a city. Based on that idea, we combined counter volumes to create a strip of undulating terrain, with inserted flat areas serving as store functions. The floating "icebergs" added on this terrain are signals to lead customers to the "park", like ice huts in the Arctic at night.



The park is the resting space of the city - The ice cream shop is the resting space of a shopping mall

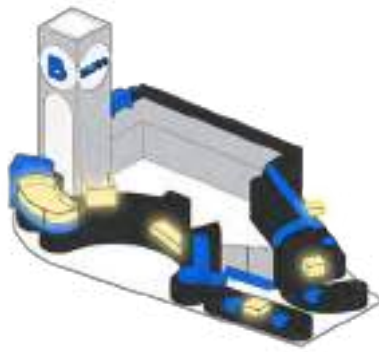


Glowing huts are the leading signal at night

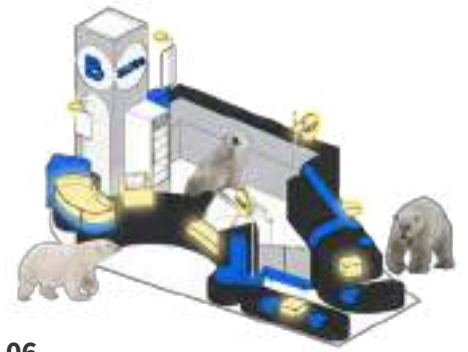




04

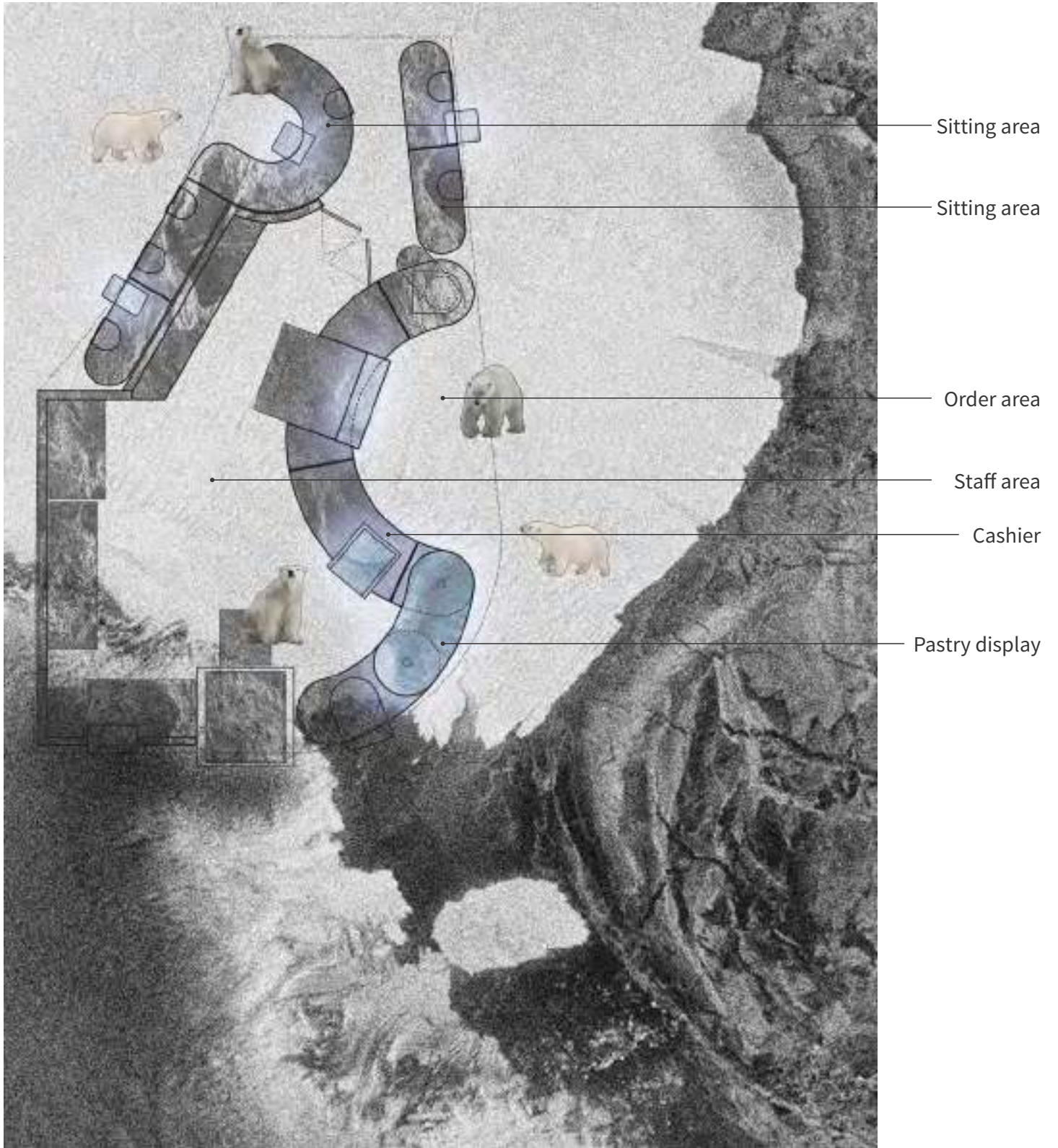


05



06











ng QUANG
ên bán thiết bị điện gia dụng
đèn trong trời - quạt máy
ĐT: (028) 3.832.3578

185
HÀNG TỰ NHIÊN
HÀNG MỚI 100%
100% CHÍNH HÃNG

185

167A
NTMK
11/04/2018

BÁNH MÌ
GIỮ NỬA



100% CHÍNH HÃNG
SCM-KHÁ



đã ăn ba m en
thư ng n th

167 Nguyễn Thị Minh Khai
0938 748 99

Photo by Spoil Studio

BÁNH-MÌ CART

Year | 2022

Location | District 1, Ho Chi Minh city

Typology | Object

Status | Completed

Participated works | Project coordinator, site supervisor, designer

When we approach a design topic as both familiar and as strange as a bread cart, the movement is what attracted us. The bread cart moves around the streets of Vietnam, bringing the soul to street life culture. The moving factor of a cart is amplified through the design of this bread cart, together with reflecting material covering it reflects the bustle of the street. Eventually, somehow the cart moves even when it stands still.



Vietnamese cart in the past with large wooden wheels



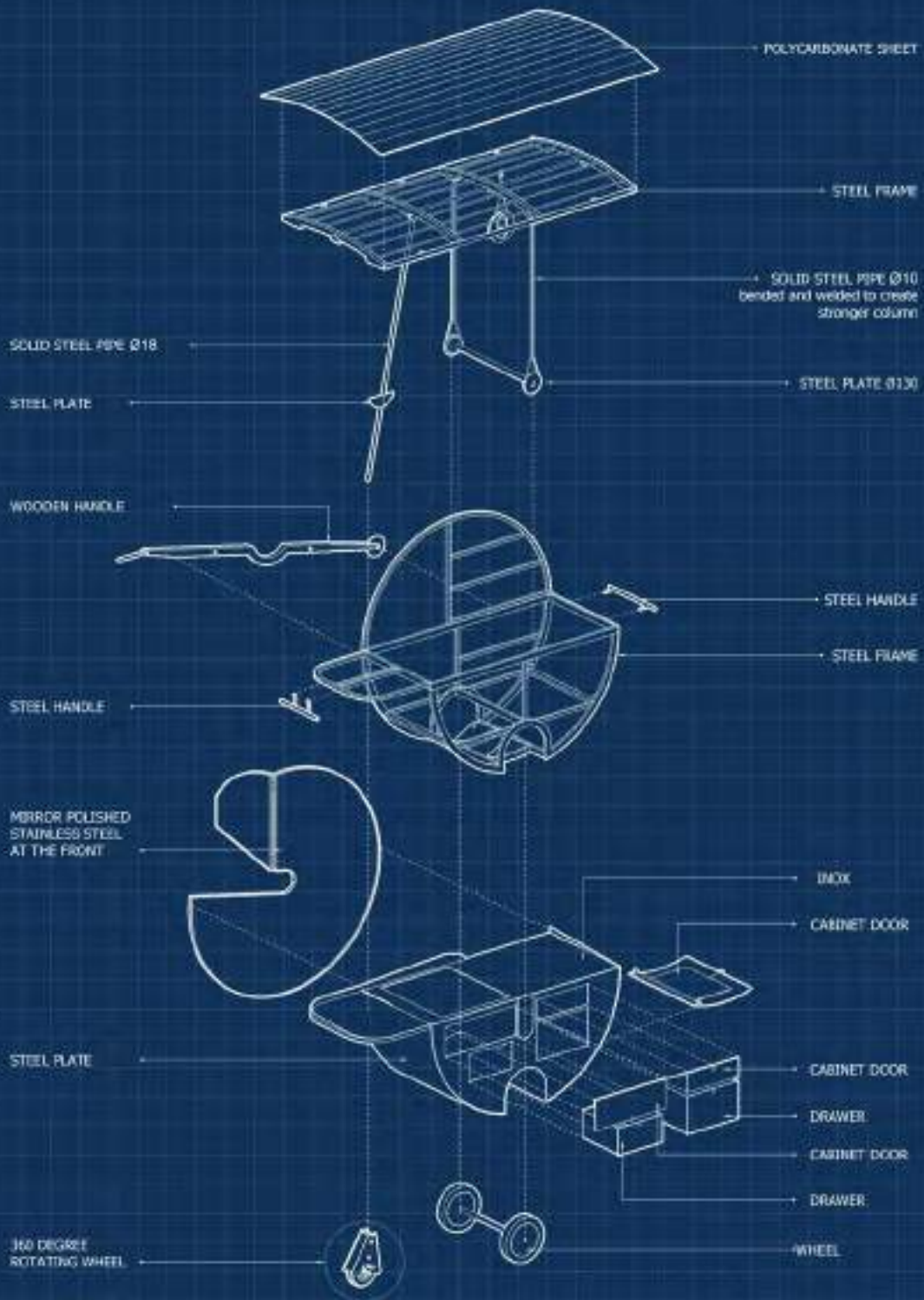
Mini cart help the bread moves around the street of Vietnam and build the street food culture



Inspiration of movement expression from the works of Shana and Robert ParkeHarrisons



The skillful hands of the craftsmen helped the design team realize the ideas in the most perfect way. Every detail is carefully discussed by the design team and the craftsman, followed by the desire to produce a sophisticated bread cart





ĐỒNG HỚI OFFICE

Year | 2020

Location | Đồng Hới, Quảng Bình

Typology | Mix-used building

Status | Under construction

Participated works | Project coordinator, designer, drafter

Located near the entrance of the new planned urban area, the 7-storeys building is the connection between a commercial building and private row houses area. The programs include office-for-rent on the lower floors and a private residence on the 7th floor. The open ground floor is created by using pilotis, which provides a clear surface for parking and connection with a riverside park at the back of the building. Each floor has a big terrace to keep a distance from the neighbourhood, which provides privacy as also outdoor common spaces for the tenants. Massing organization gives the 7th-floor minimum interaction with the neighbourhood, thus keeping privacy for the residence. A layer of louvers envelops the whole building giving an immediate impression from the outside, on the other hand, functioning as heat insulation. The project realizes the client's vision of a remarkable building in the area while offering a system that both works for office and apartment.





Office building

Typical office buildings tend to provide maximum rental area, thus their shape comes with stacking floor plans



Apartment

Residences require certain level of privacy, therefore some setback is needed



Monolith

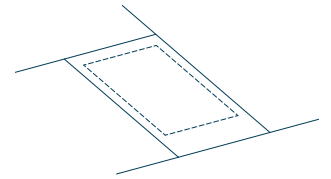
The idea of building shape comes from stone quarry, which has united form



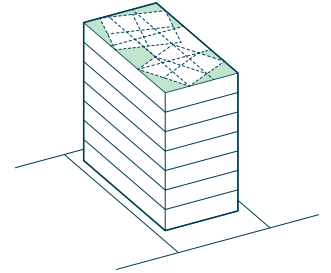
Perforation

Perforated wall is used to control the environment in tropical countries

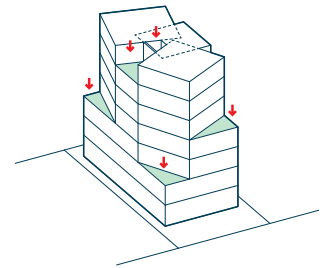
The building footprint is defined by setback regulation



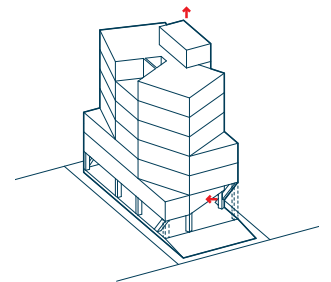
The mass is divided into 3 parts, the core in the middle and 2 rotated volume at the front and back



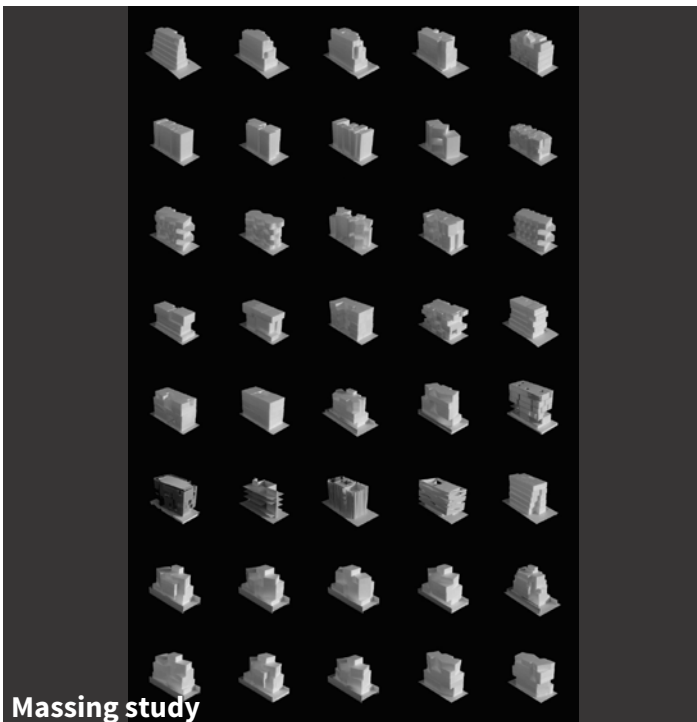
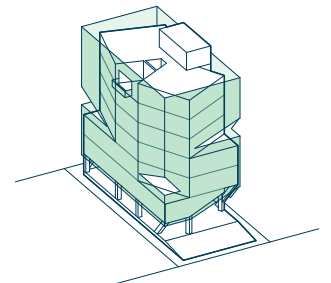
The rotated volumes generate different views for the building, at the same time create terrace for each floor



The ground floor is completely opened for parking. The 2nd floor is partly rotated to avoid direct sunlight



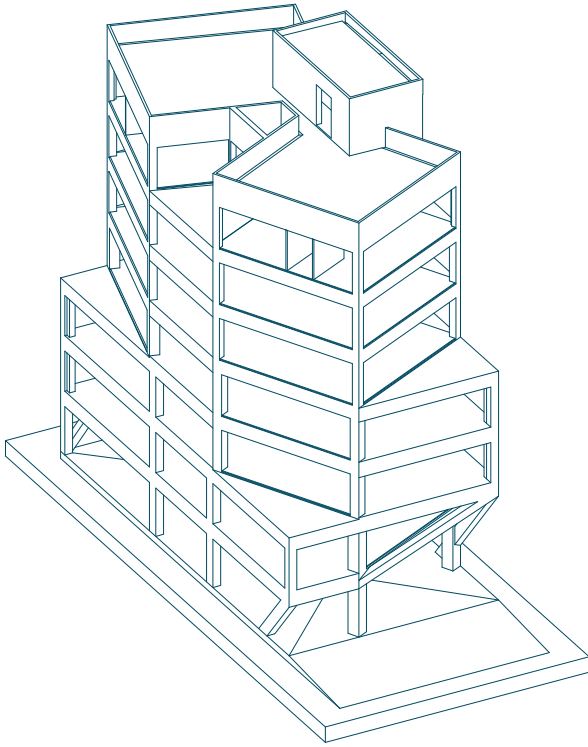
A layer of louver envelop the whole building, protects the inside space from heat. The solid panels generate "holes" on the surface while being insulation layer themselves



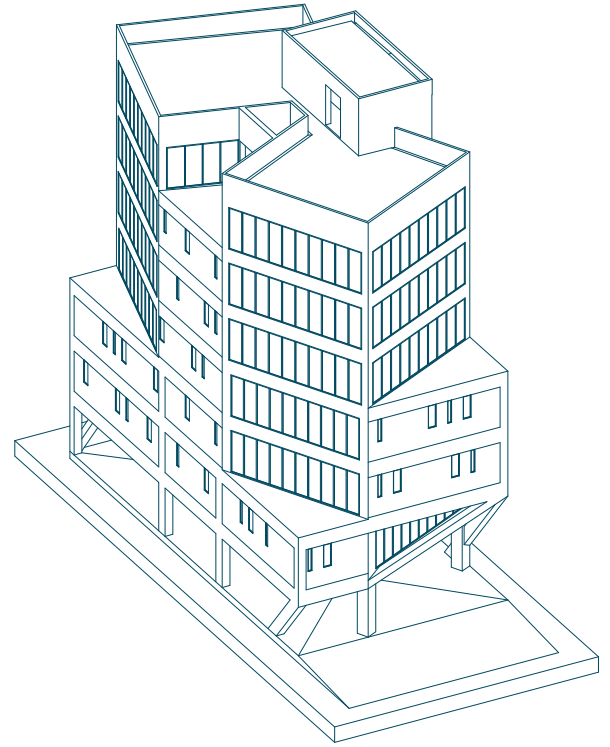
Massing study

Massing diagram





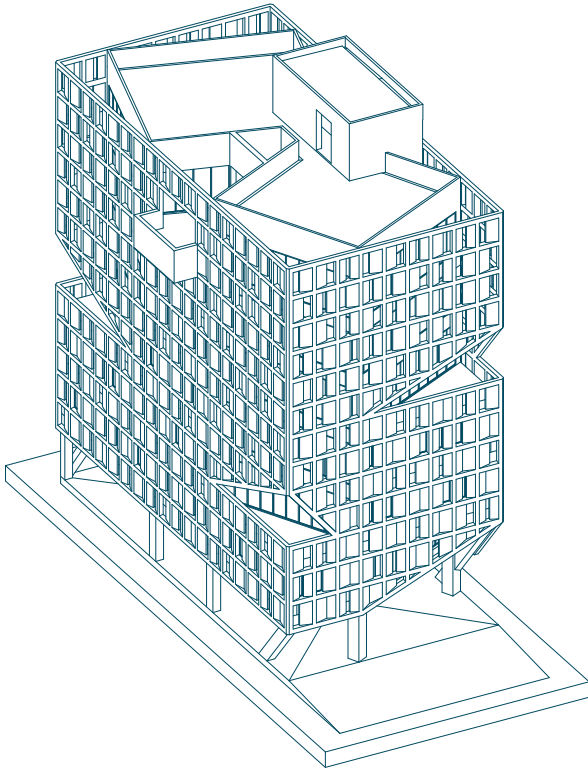
Structure



First cover



From the 6F office look towards the terrace

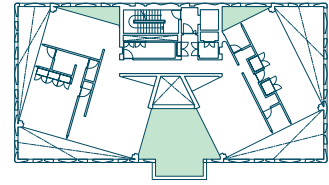


Second cover

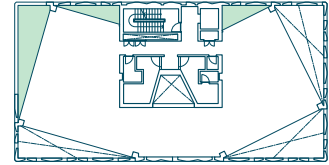


7F apartment living room

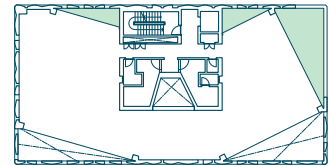
Seventh floor



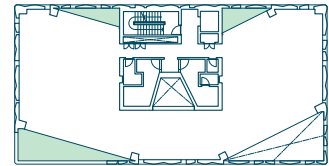
Sixth floor



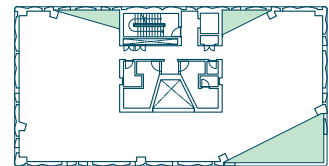
Fifth floor



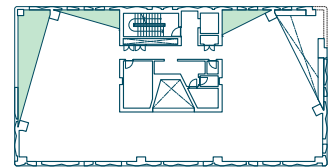
Fourth floor



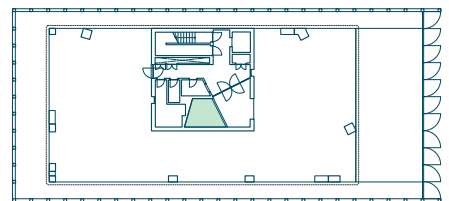
Third floor



Second floor



Ground floor





MAISON OFFICE

Year | 2020

Location | Hà Nội city

Typology | Interior design

Status | Competition

Participated works | Designer

The design proposal for this 2200m² floor area office introduces a low-key expression of the “office-like-home” concept. The idea is to provide the various scales of spaces, which are separated by a loose structure boundary between them, still, there is a difference in their atmosphere for the people to notice.

The fixed programs are put in the boxes, floating on a field of free space with a diversity of characters where people feel free to experience in their way, which enhances the potential of office activities possibilities.

The origin of the office

Until 18th century, most of the work was done in coffee shops or people's home. It seems that they are recognized as social gathering places rather than just coffee shops.

The origins of the modern office lie with large-scale organizations that required written records or documentation. Medieval monks, for example, worked in quiet spaces designed specifically for sedentary activities.

The history of the office

The ateliers are the example of the workplace before the birth of modern offices. The owners lived above their stores and so did the employing clerks. A part of the house or its extension became the workplace.

The first purpose-built office building was established in 1726, following the increasing necessity of centralizing operations. This has been the model of an efficient office.



Sociability



Autonomy



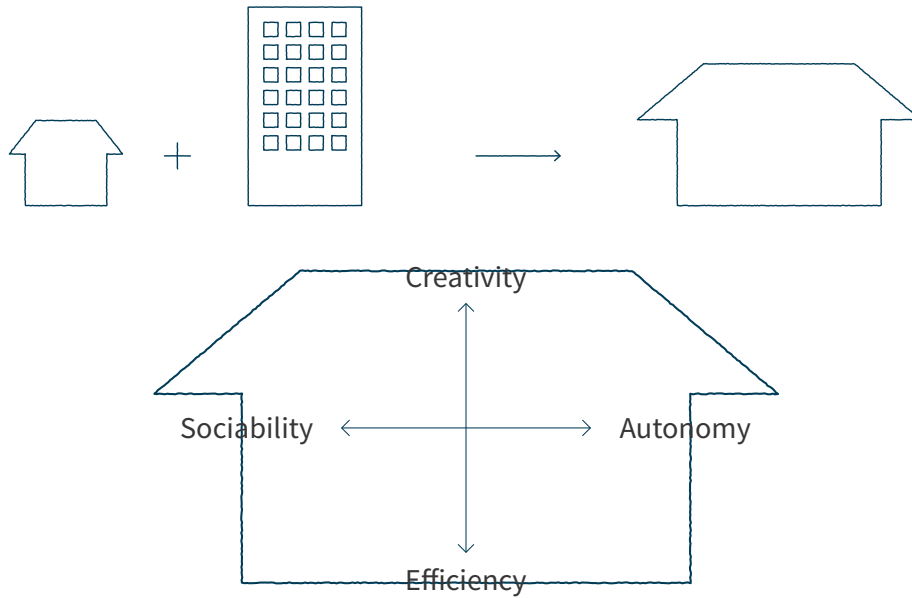
Creativity



Efficiency



OFFICE = BIG HOUSE



Office = Big house: space where we find our suitable spots for self-develop.





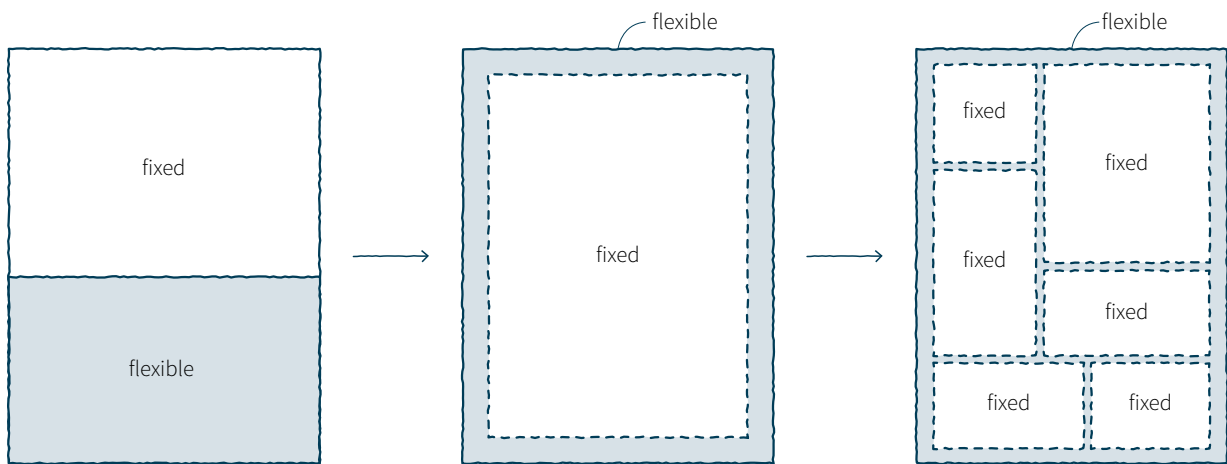
Blurring the home - office distance
 The “home - office distance” has been caused by our perception of the function of each place. Our solution to blur the home-office distance is to think of the office as a big house, where the space has flexible function. Inside the “house” there is plenty of fixed-function rooms, which do not have a clear boundary with the rest of the house.



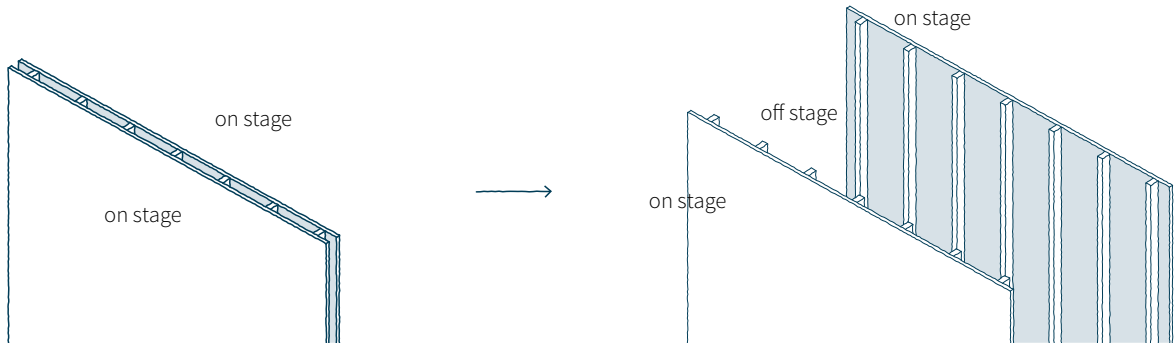
Behind the scene
 Imagine work life is like a performance, therefore the workspace represents the stage. There are many stages running at the company, for different performances, which are separated by partitions. Pull the partitions apart, the gap in between the structure is stretched, hence the “backstage” is formed. The “backstage” does not have any fixed function. Its scenario changes depending on activities.



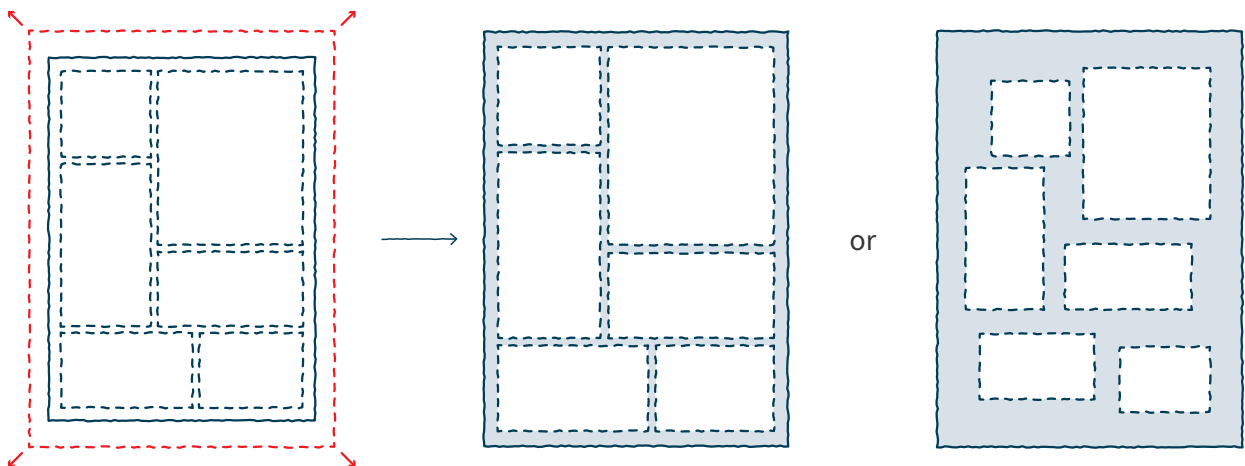
Space and activities in a house
 When the house is expanded into a “big house”, there are 2 possibilities:
 1. All the rooms are larger with all activities happen inside
 2. Or the rooms are kept with just enough size, leaving the rest of the house various scales of space with no fixed function - the “backstage”. This space provides possibilities for activities and vice versa, the activities define the space.



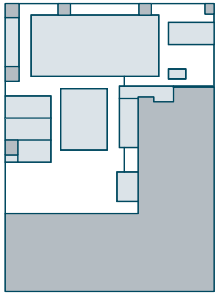
Office = big house: blurring the boundary



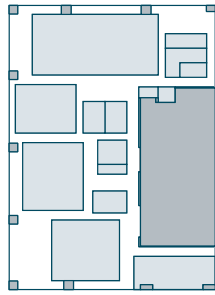
Office = big house: on-stage space and off-stage space



Office = big house: various scales of space with the diversity of activities

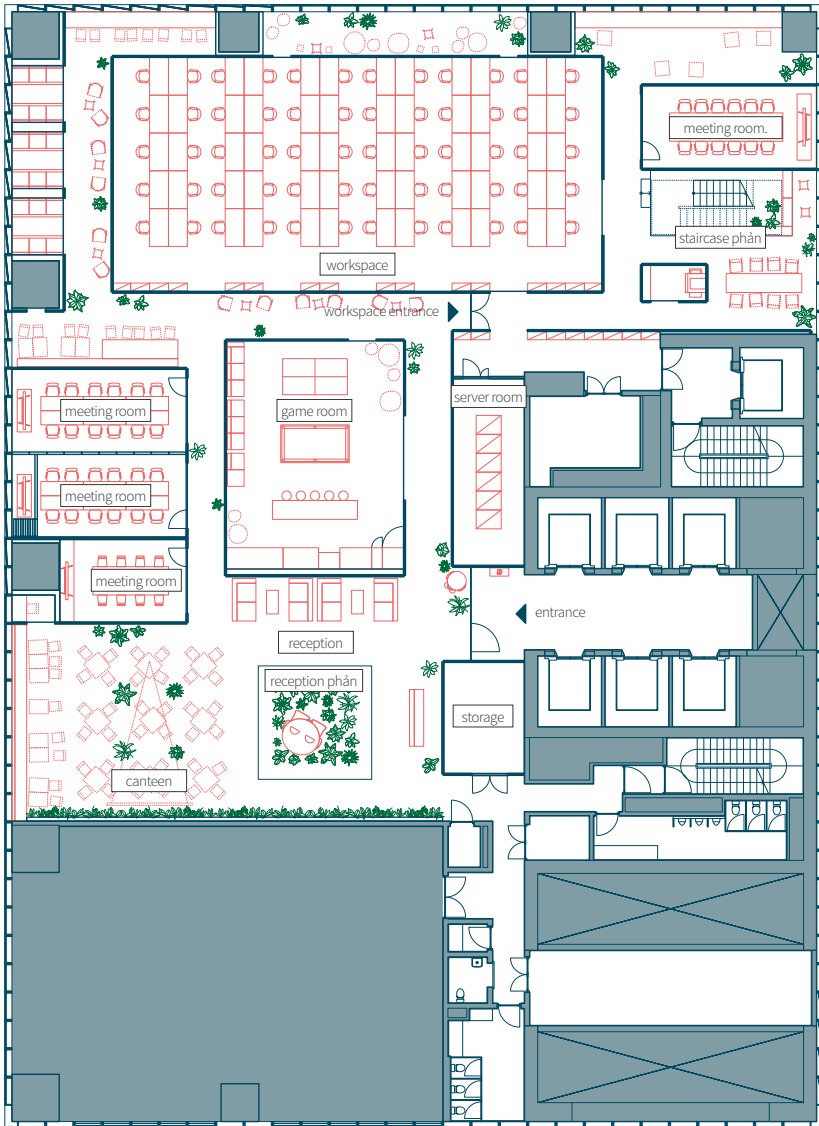


20F



21F

- flexible space
- fixed-function space
- existing building



20F plan

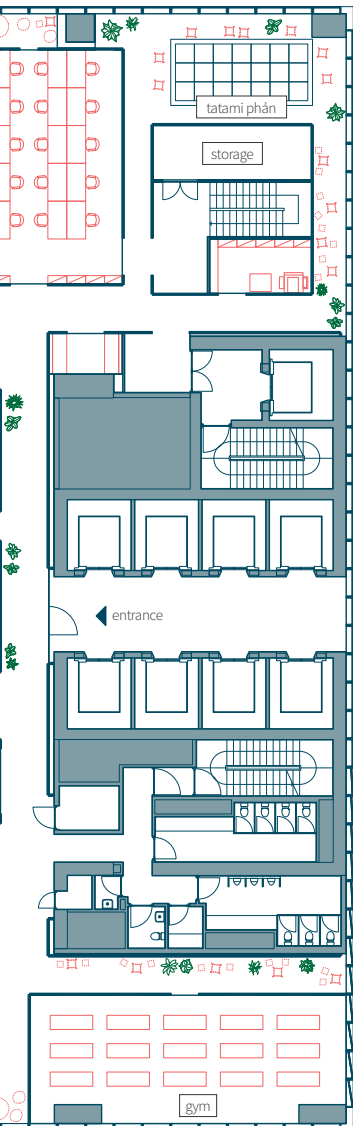


21F plan

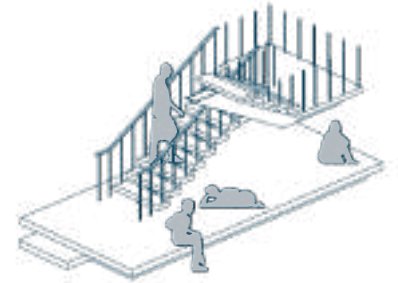


Phần

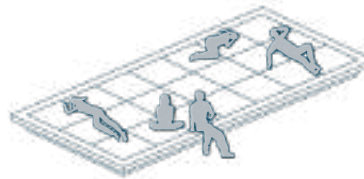
Phần is a Vietnamese traditional furniture item, on which people welcome the guests, have meals or even sleep, etc. There is no limit for possible activities on a phần. 4 phần are put in the common spaces, generate random social interactions.



Reception phần



Staircase phần



Tatami phần



Stepped phần



Partitions

The partitions contain wooden frame supporting plaster boards. Instead of using horizontal bars to support the structure, we use diagonal ones, referencing the image of water palm field for the flexible space.

