



PORTFOLIO
SAJID I AWAL

CONTENT

PRITILATA WADEDDAR MEMORIAL COMPLEX	4
CULTURAL CENTER FOR TRADITIONAL CRAFT	6
MIDDLE INCOME GROUP HOUSING	8
PUBLIC, PRIVATE & IN-BETWEEN SPACES IN STUDENT HOUSING	11



PRITILATA WADEDDAR MEMORIAL COMPLEX

Third Year Project
Duration: 6 Weeks

Pritilata Wadeddar was an revolutionary historical figure, who was the disciple of Masterda Surya Sen during the british colonial period in the indian sub-continent. The project was about designing a memorial complex on an imaginary site. The Concept was derived from a famous song of the famous poet who wrote the national song of Bangladesh, which can be translated as 'I will overcome the storm and won't fear it'. These concept is translated into design as overpowering ocean wave with overhead cantilever to show the mightiness and give the essence of revolution.

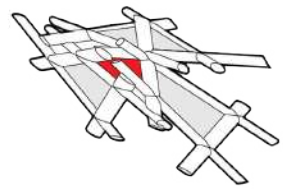


“ঝড় কে আমি করব মিতে, ড়ব না তার ঞকুটিতে।”
তোমার খোলা হাওয়া

Ocean wave as Revolution



Breaking belief with the force of Revolution



Void inside pattern symbolizing FREEDOM

1911
Disciples of Surya Sen
Social Activist
Freedom
Slogans & Indians are not allowed
1932
Sacrifice
Pabartali European Club Armed Attack

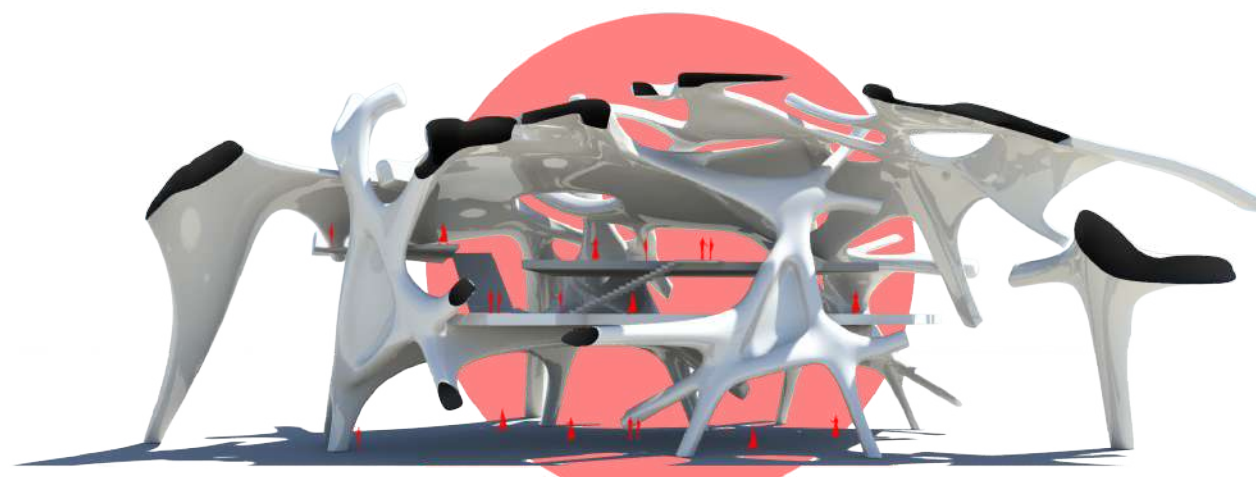
Pyramid, most stable form symbolizing belief



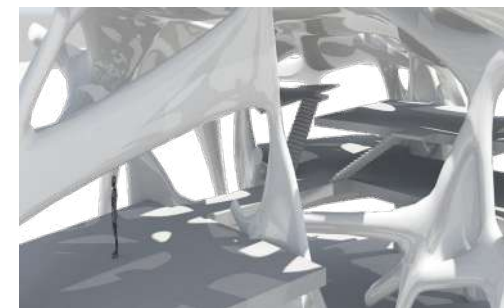
Pattern Formation



Plan at 15'



Sectional Perspective



The material suggested for this project would be the Chitosin, which is a biodegradable materials that can be molded from animal bones to form any shape.



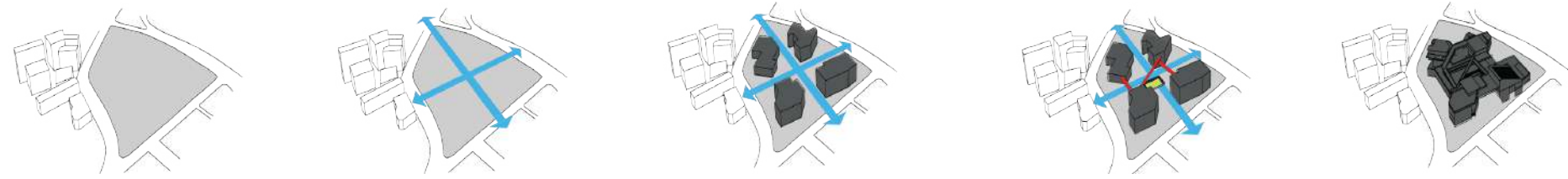
Cultural Centre For Traditional Craft

Fifth Year Project

Pre-Thesis

Duration: 12 Weeks

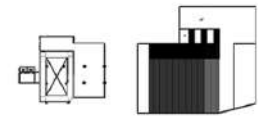
The project was about designing a cultural centre on the existing site of Aarong near Hatirjheel, Dhaka, Bangladesh. The main concept of the project was such that, the individual story of the craftsmen behind each crafts are represented as the void at the centre, where other patterns of the crafts representing by different program are weaved surrounding the void. The central void is also the traditional court considering the axial plaza on four sides maintaining the vista towards Hatirjheel lake on all the four sides of the project. The whole complex is designed with concrete shear walls and waffle slab structures and the plaza were designed with brick to maintain the contrast.



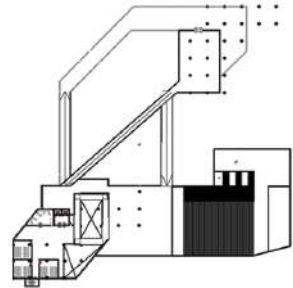
Massing Development



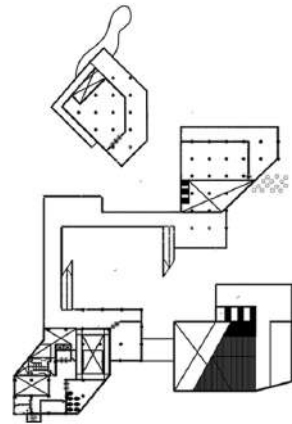
Level 1 Plan



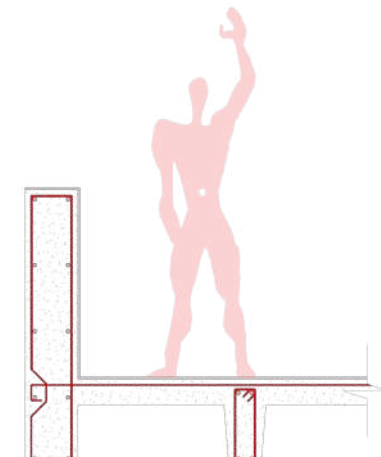
Level 4 Plan



Level 3 Plan

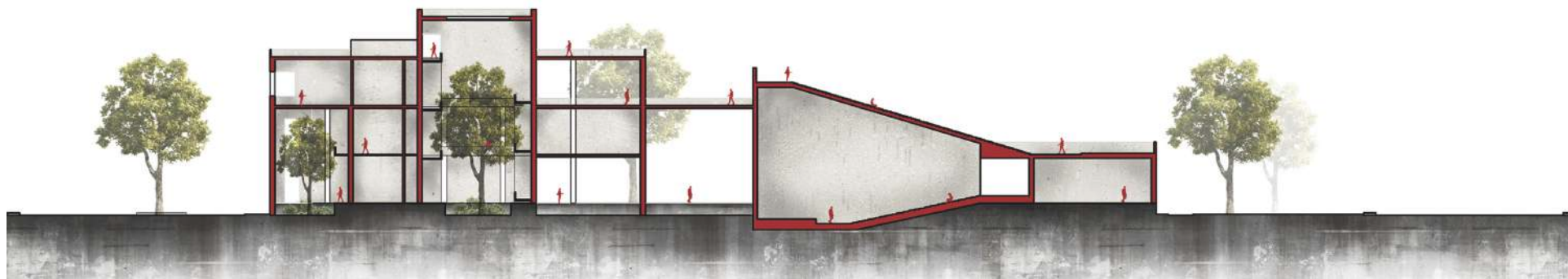


Level 2 Plan

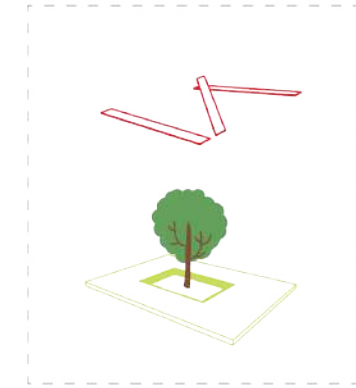


Detail - Floating Ramp as Waffle Slab

Vertical Wall reinforcement - 10mm bars;
 Transverse reinforcement - 8mm bars; Slab reinforcement mesh - 8mm dia; Plaster 10mm

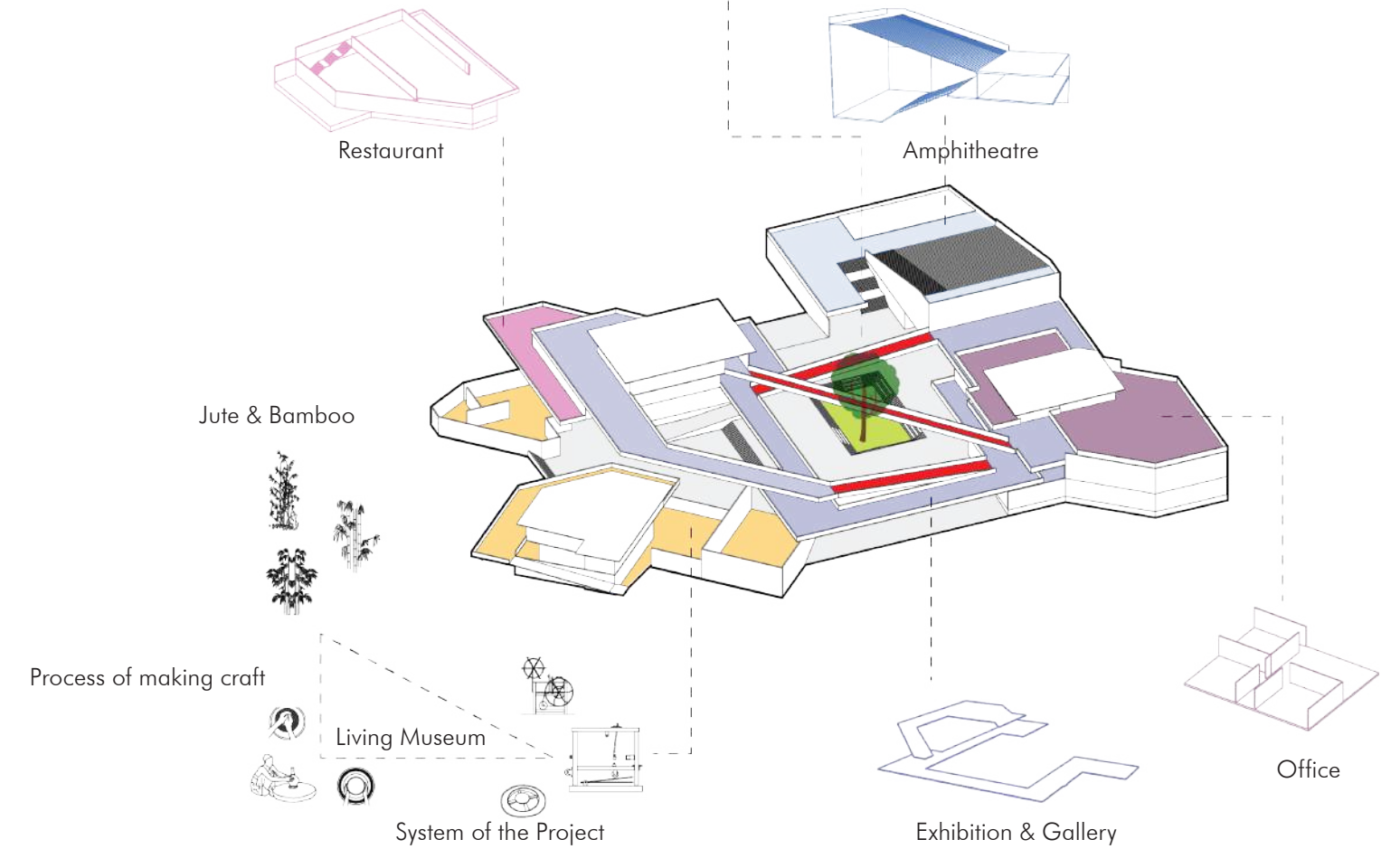


Section



Circulation represents weaving

Void represents sotries behind Craft





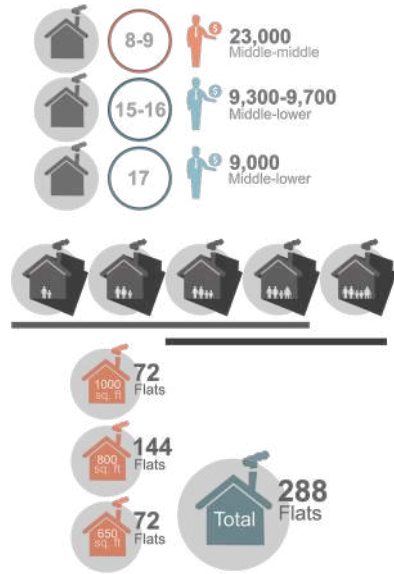
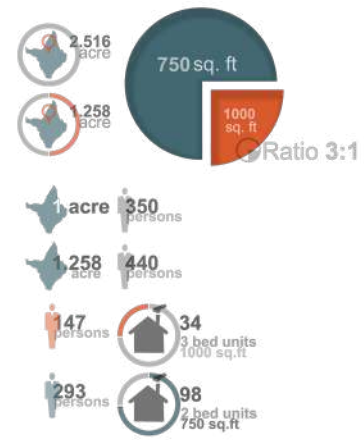
Middle Income Group Housing

BARCH Thesis Project

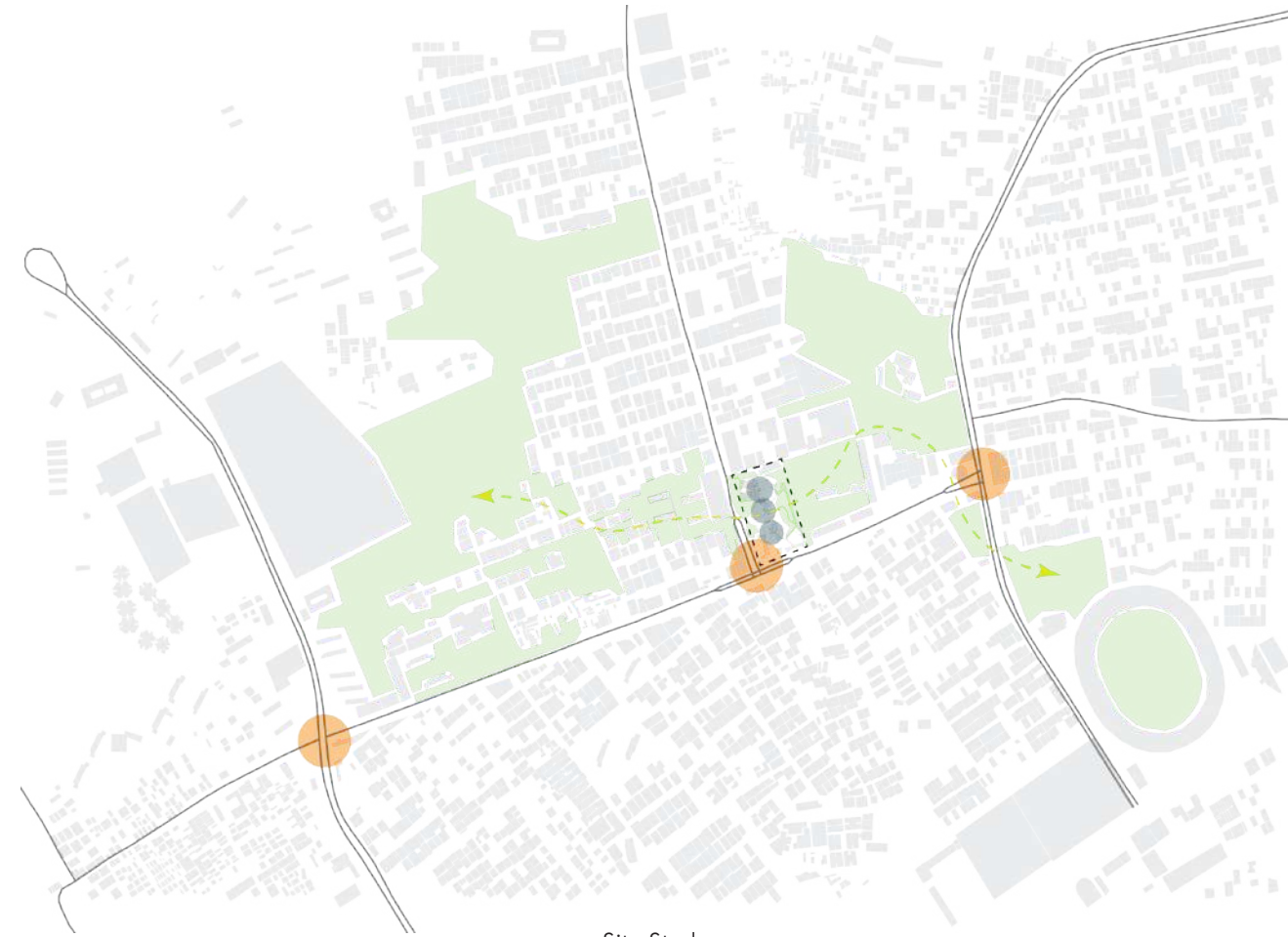
5th Year

Duration: 16 Weeks

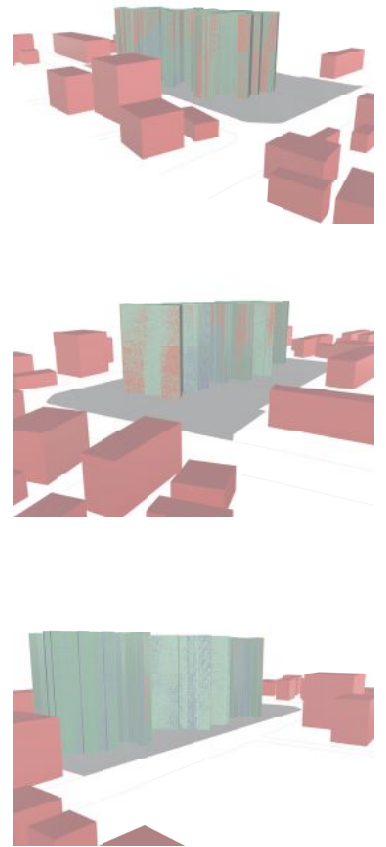
The Project was about housing the middle income group Government employee on a site near Shialbari, Mirpur, Dhaka, Bangladesh. With undulating surface on the existing site, the design was made with an intention to create homes rather than just housing people. Community spaces were given both inside and outside the building distinguishing the private and public spaces. The ground was tried to keep open for the un-interrupted vista towards the existing green on the east of the site. The given proposal is questioned and a revision of the programmes were done considering the density standard.



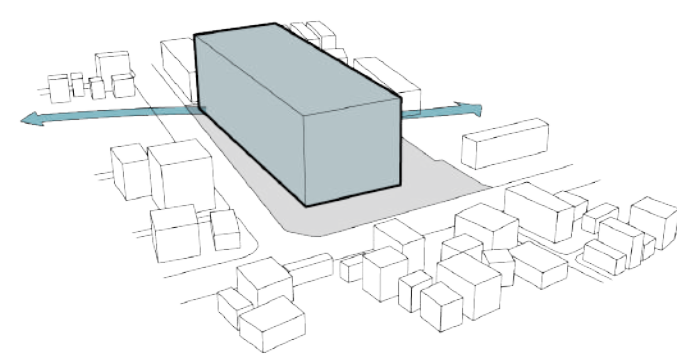
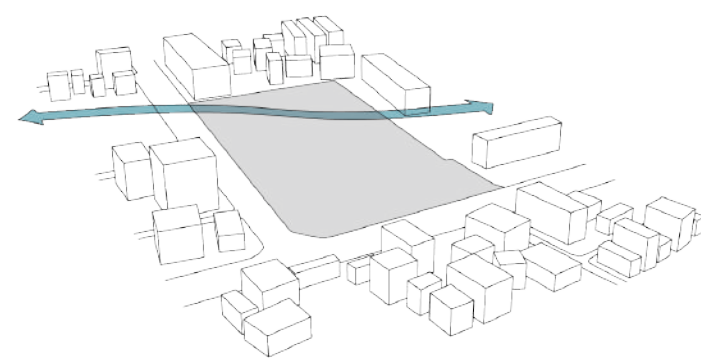
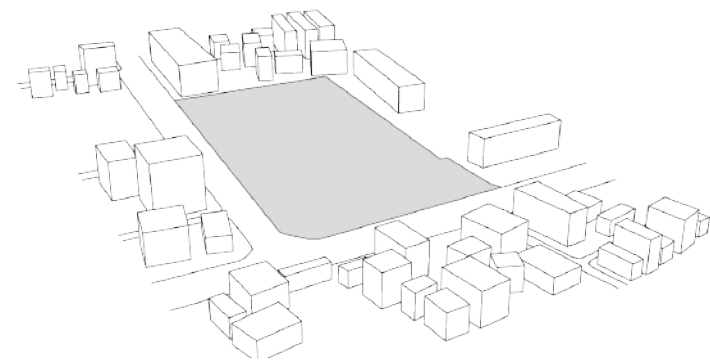
Program Development



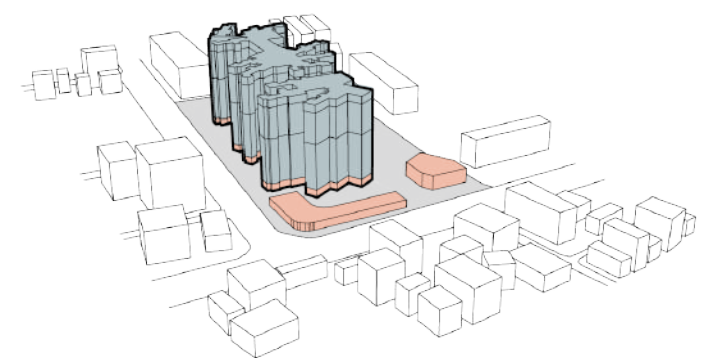
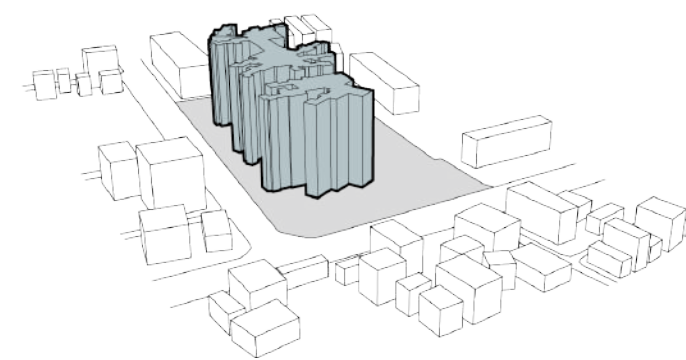
Site Study

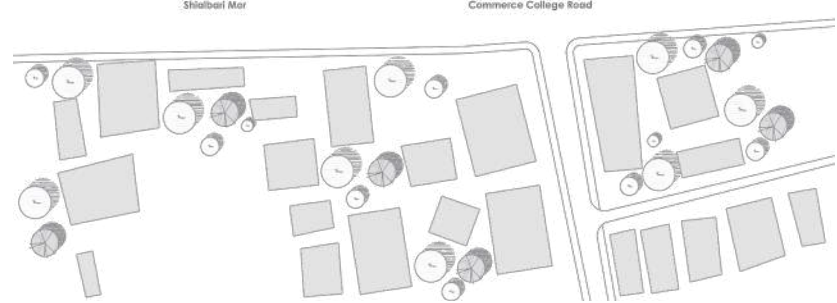


Daylight Analysis of Massing with Ladybug



Massing Development

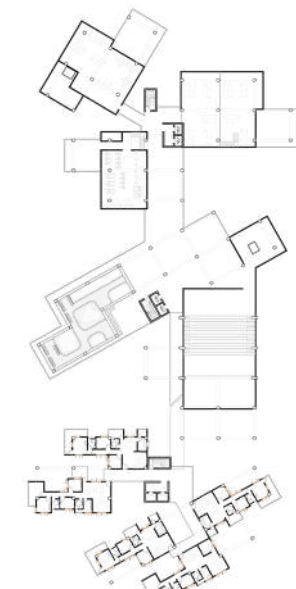




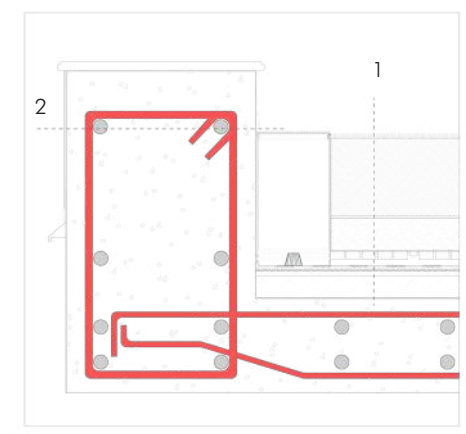
Level 1 Plan



Level 3 Plan



Level 6 Plan



1 (Top-Bottom)
 Left - Galvanized steel for water drainage; Right - Herbaceous perennial ground cover, Soil with high water retention capacity - 150mm; Cloth of nonwoven polystyrene panel - 2mm; Gravel; Cloth of nonwoven polystyrene panel - 2mm; Expanded polystyrene panel - 8mm; Dual shell breathable high polystyrene beads with mesh, screed - 50mm; Panels of extruded polystyrene foam, insulation and acoustic - 70mm; Multilayer film with aluminium vapor barrier - 3mm

2 (Left-Right)
 Inverted Beam reinforcement - 10mm bars; Transverse reinforcement - 8mm bars; Slab reinforcement mesh - 8mm dia; Plaster 10mm

Inverted Beam with Planter Box Detail



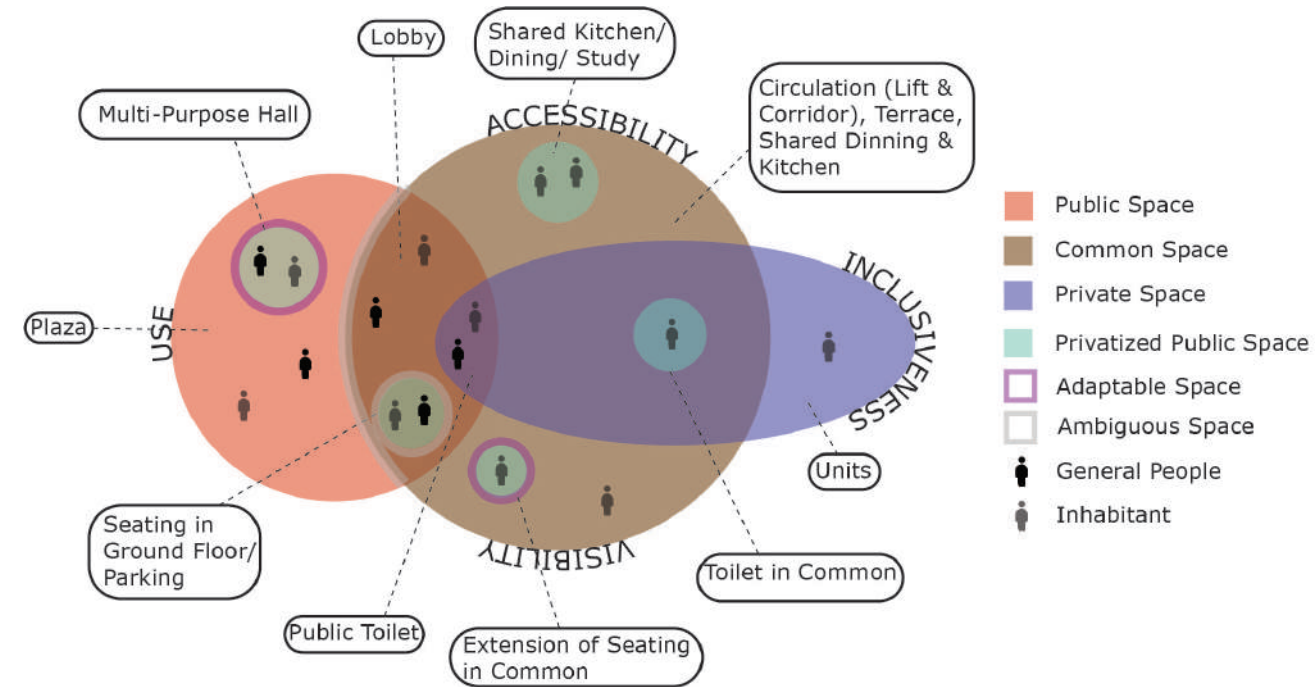
Section



Isometric View

Public, Private & In-between Spaces in Student Housing

MARCH Thesis Project
Duration: 1 Year



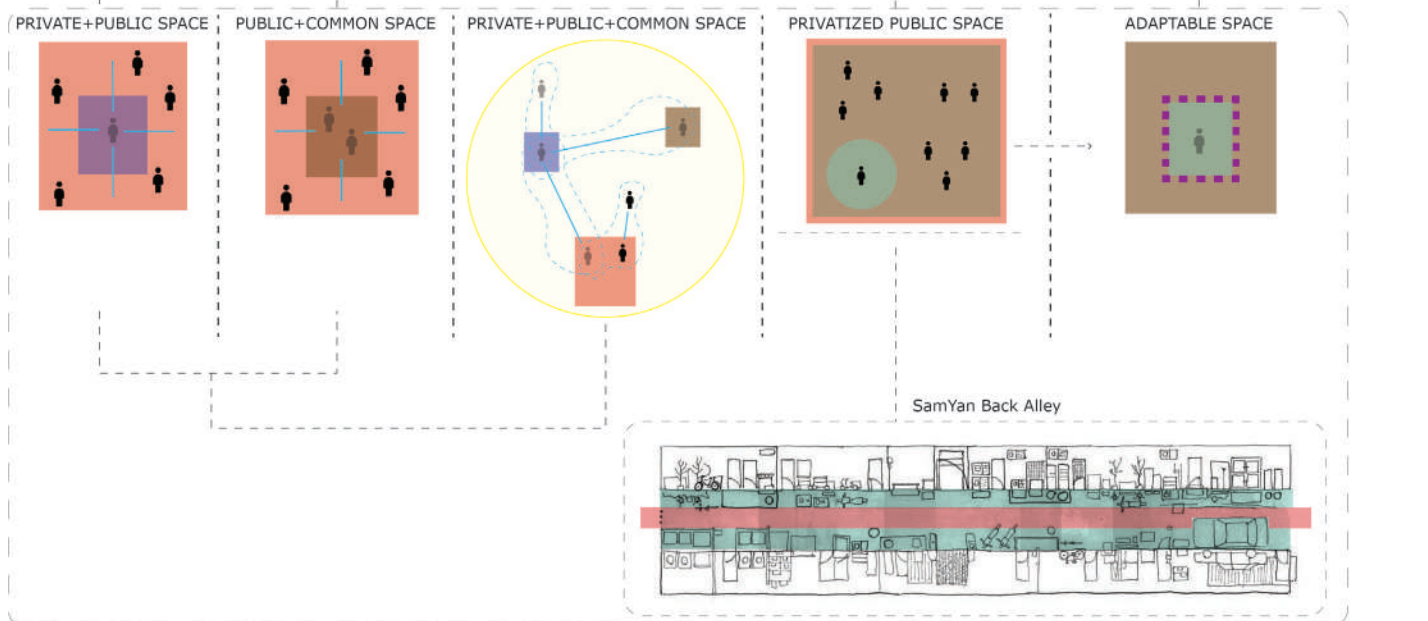
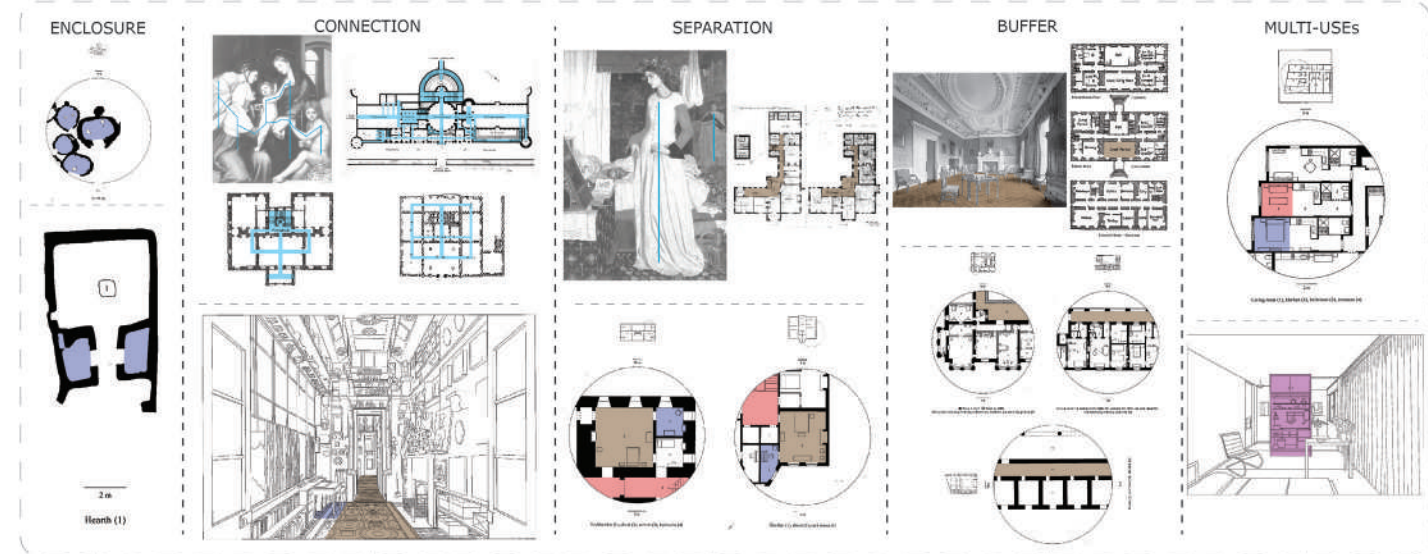
In any housing design, finding the right balance between public and private spaces is one of the most difficult issues. In terms of student housing, many scholars argue that public and private spaces are equally important for promoting interaction among the students as well as ensuring opportunities for self-development in shared dwellings. This research aims to establish definitions for public, private, and in-between spaces along with their relationships in student housing to achieve a right balance in the design of it.

Firstly, a literature review is conducted, and spaces are qualitatively analyzed from the urban and socio-cultural perspectives to derive the initial definitions. Four selected student housing cases, both local and international, are then analyzed according to the derived initial definitions of public, private and the in-between spaces. Then the qualitative analysis is further compared with the quantitative analysis with the use of space syntax as quantitative methods.

The results of this research indicate that in student housing, the definitions of public, private, and in-between spaces not only conform to those derived from the literature review but also have their own particularities. Common, privatized public, and adaptable spaces as the in-between spaces are found to exist both in the designated space as well as in any other spaces of student housing. Whether a space is public or private can be identified based on four factors, which are accessibility, inclusiveness, visibility, and use. Variations in the size and use of such spaces are also found to influence the nature of the different space types. Public and private space co-exists with the existence of various levels of publicness or privacy. Often, various types of buffers are used for the smoother transition between public and private spaces.

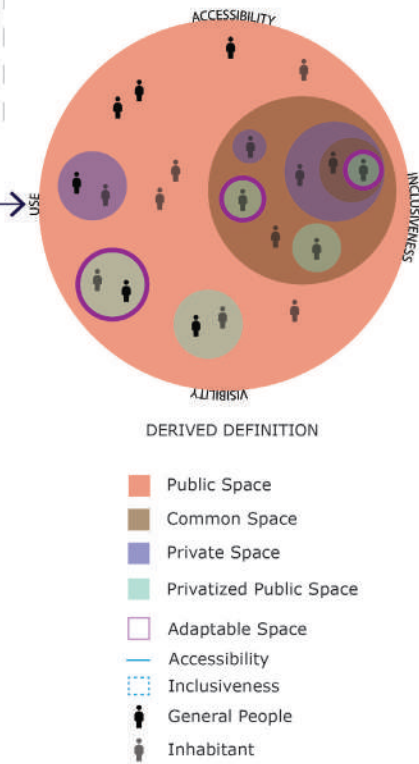
However, in the design part of this thesis, it has been found that the student housing has various types of accessibility as well as buffers. These buffers along with the connection between multiple levels impacts the privacy of the spaces in student housing. Besides, some differences are also found while defining the privatized public space and buffer types in terms of definitions. But this phenomenon can be resolved considering all the four derived factors in the initial definitions of public and private space. Public and private spaces are integral part of student housing. A good balance with adaptability between public and private spaces of student housing would eventually contribute not only to the students, but also the university and surrounding areas.

Public & Private Space in Domestic Spaces from Socio-Cultural Perspective



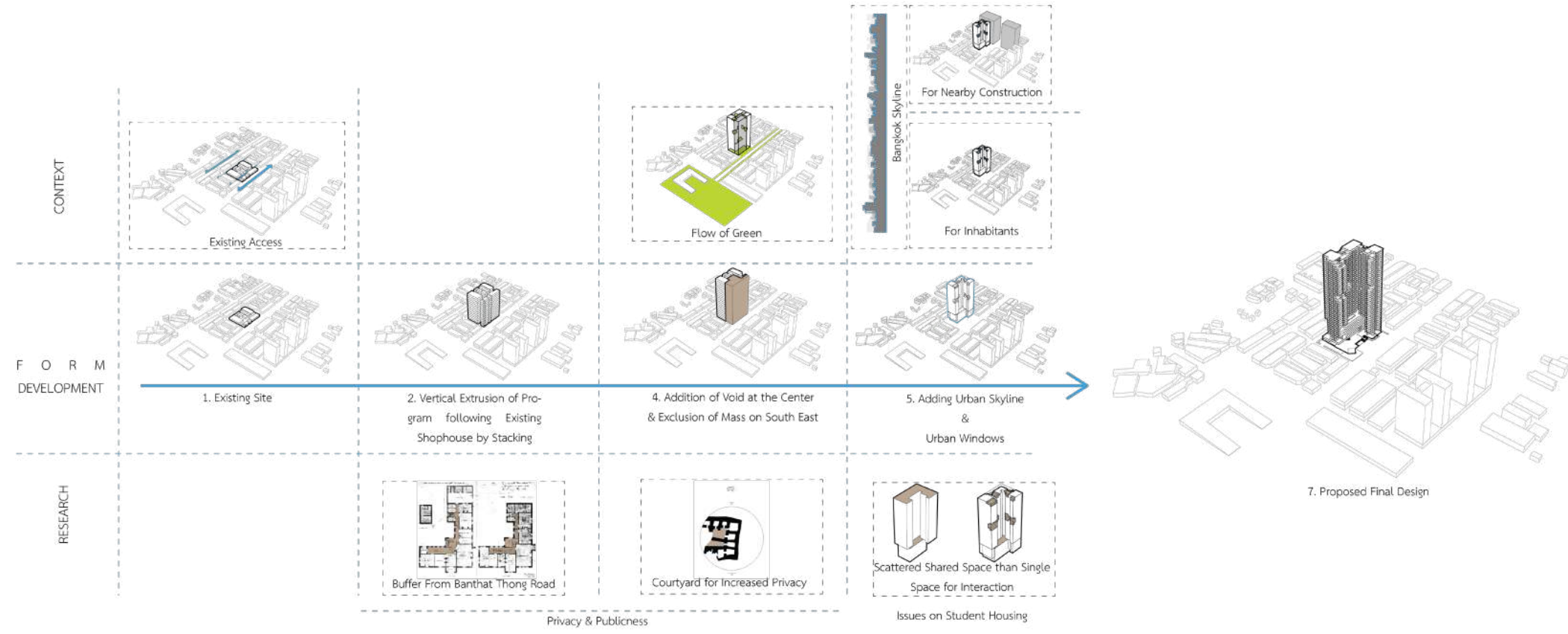
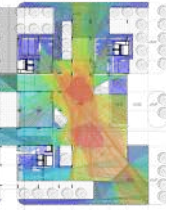
Definition of Public & Private Space from Urban Perspective

Derivation of Definition of Public, Private & In-between Spaces



Site Study



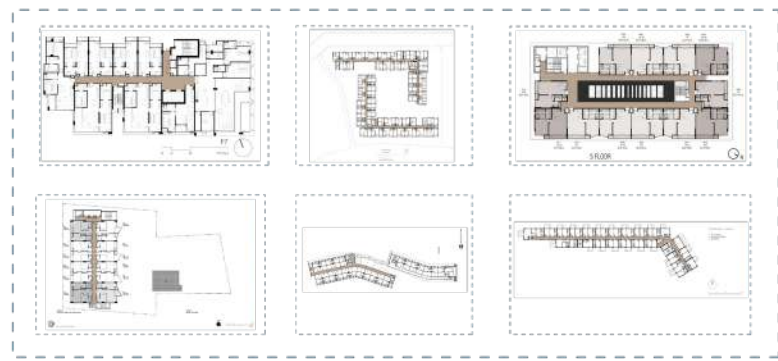


Form Development

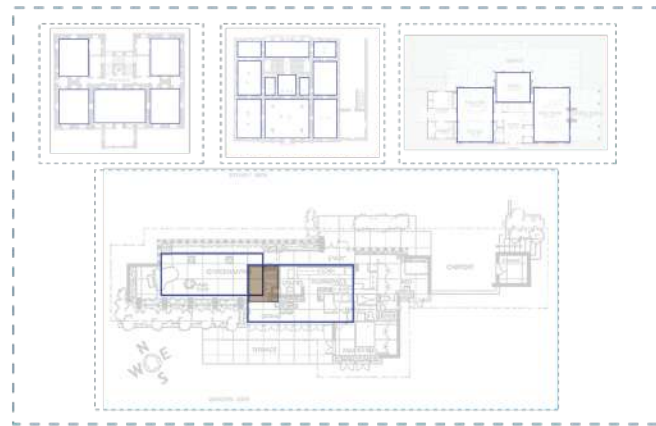


Level 1 Plans & Analysis





Double loaded corridor in Bangkok housing for maximizing units

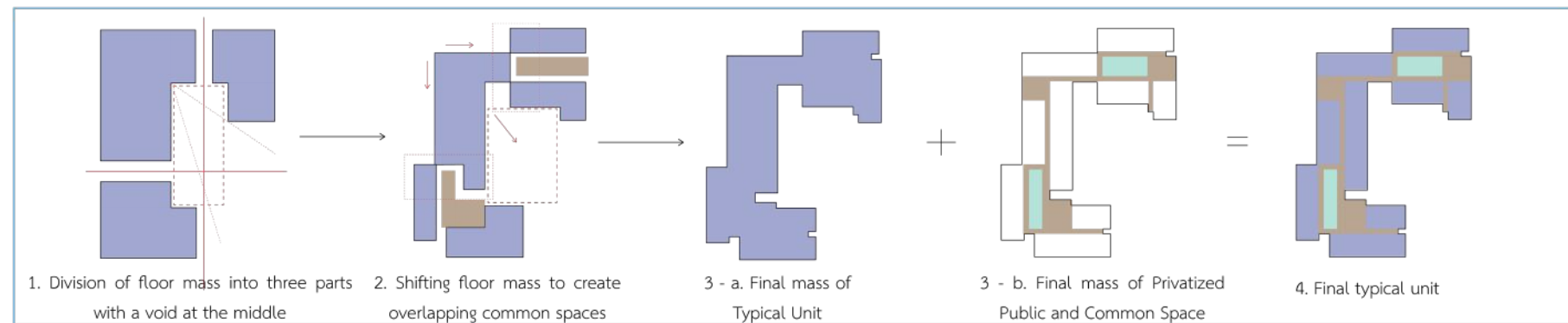


Overlapping private spaces with common spaces to ensure flow of space

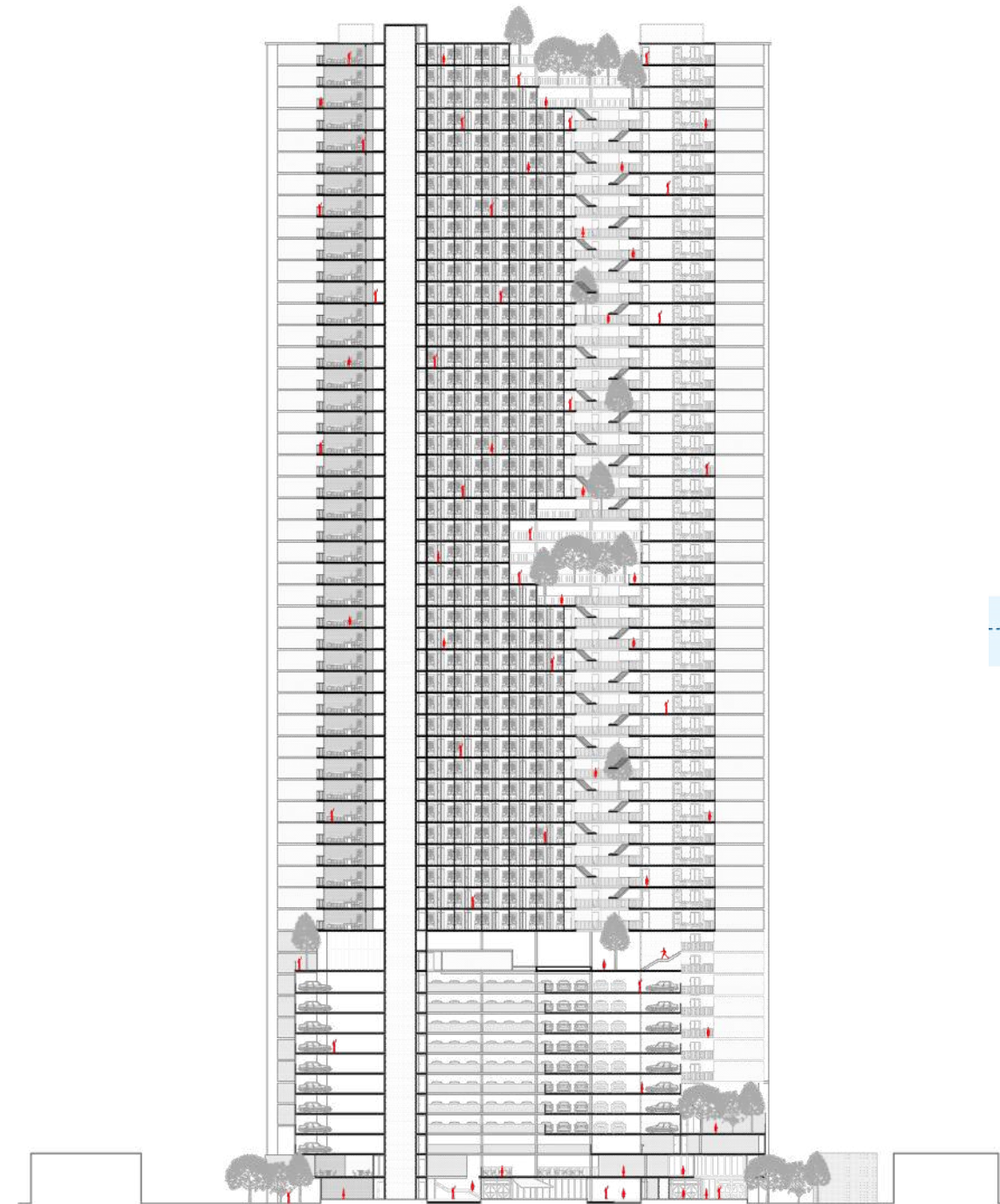


Courtyard with buffer to create privacy for the rooms

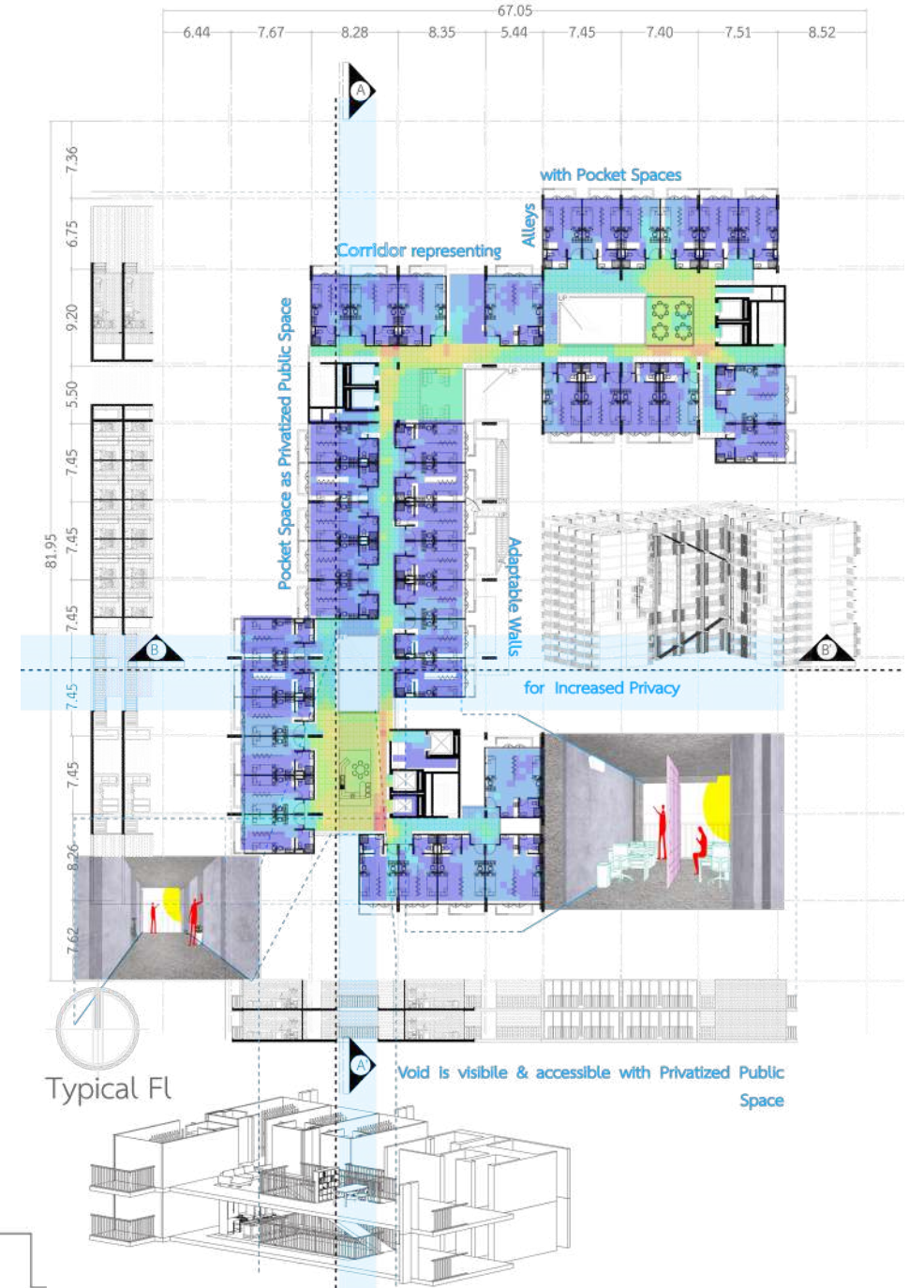
Corridor to ensure privacy for each room & to connect them



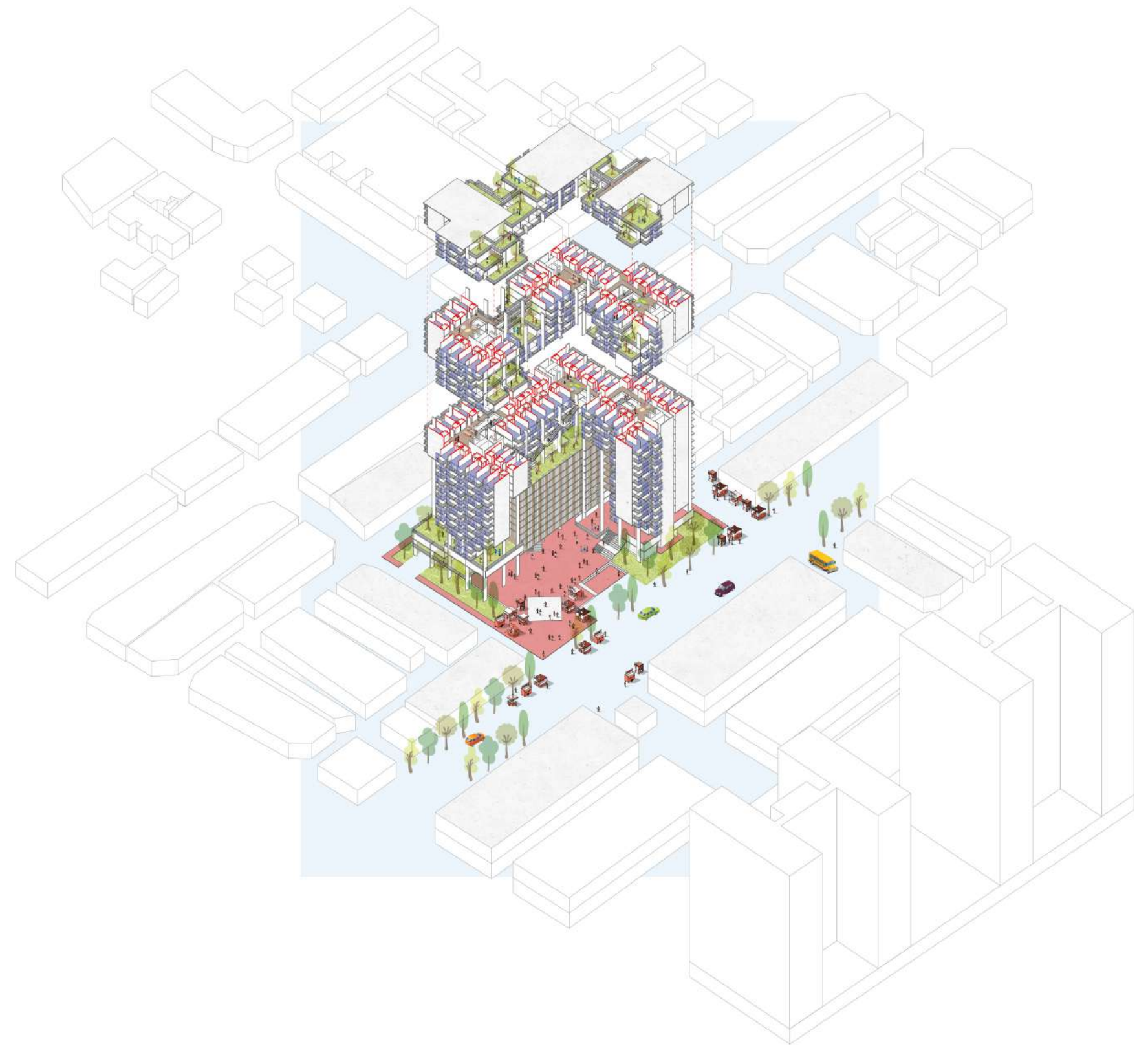
Derivation of Typical Floor

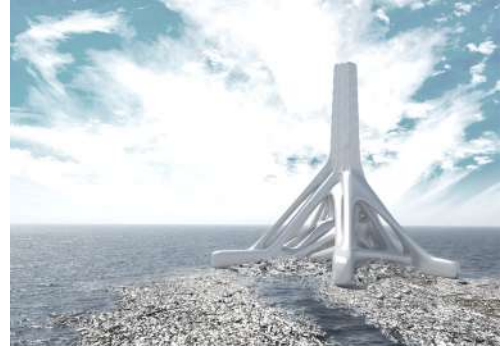


Section AA'



Typical Floor Analysis





Thank You!