

Kamphaeng Petch Air Resident

Head of the architecture designer for Mixed Commercial and residential project in Kamphaeng Petch Province in Thailand.

The project is situated on the edge of Kamphaeng Phet city, the city extends along north and south direction which paralleling with the Ping River. Similarly, the site's location is located in front of the river with the limit of the designed area. The building requires to maximize the space to serve all the purpose for work and the owner's lifestyle. Even the site has a limited area, but this issue could not be an obstacle to create an aesthetic and quality detail of the building. The inspiration of the project started from the Reclining Buddha statue at Wat Phrakaeo,

Kamphaeng Phet Historical site which comes from the biggest laterite stone in the country. Architecture represents like a laterite stone that stands out in the existing context of Kamphaeng Phet as a new landmark of the city. Meanwhile, become part of the city fabric in the future.

Project Year
2020

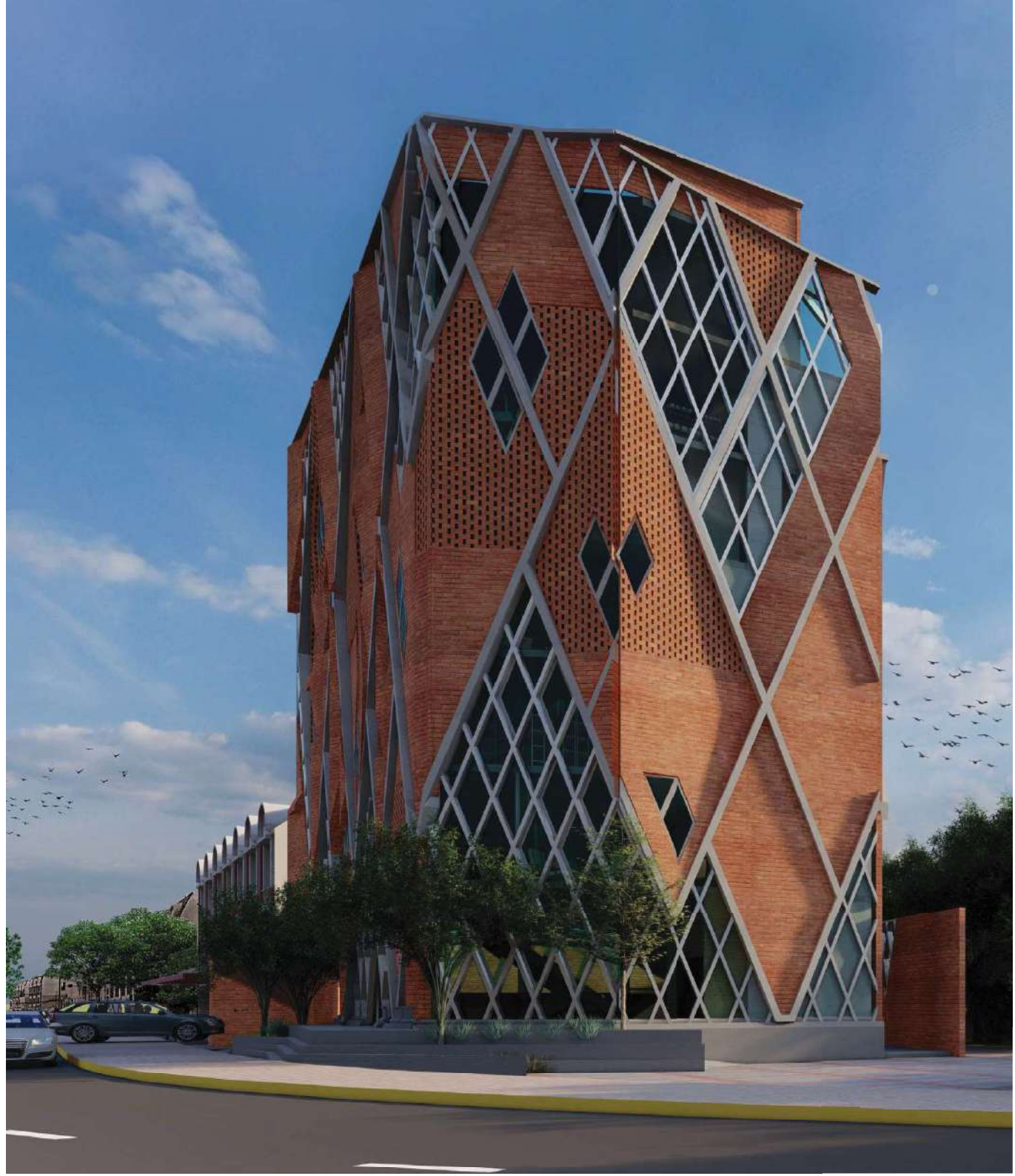
Project Type
Residential and Commercial

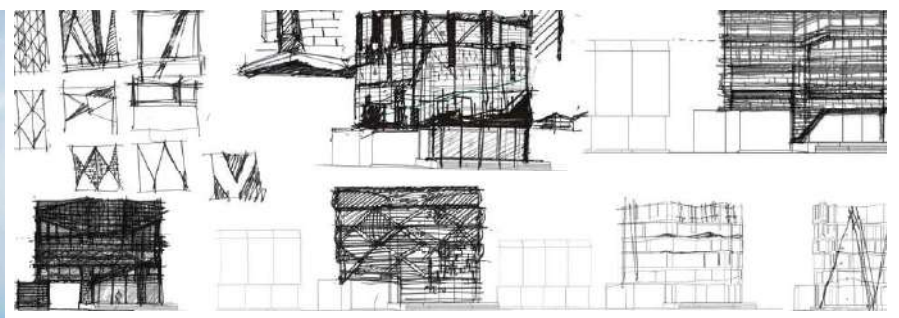
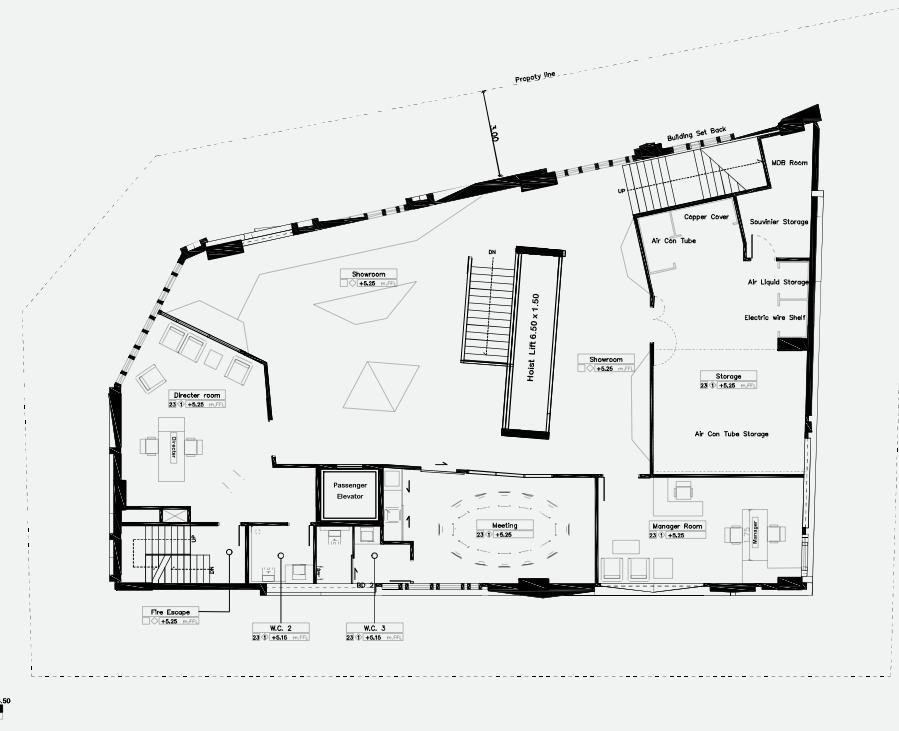
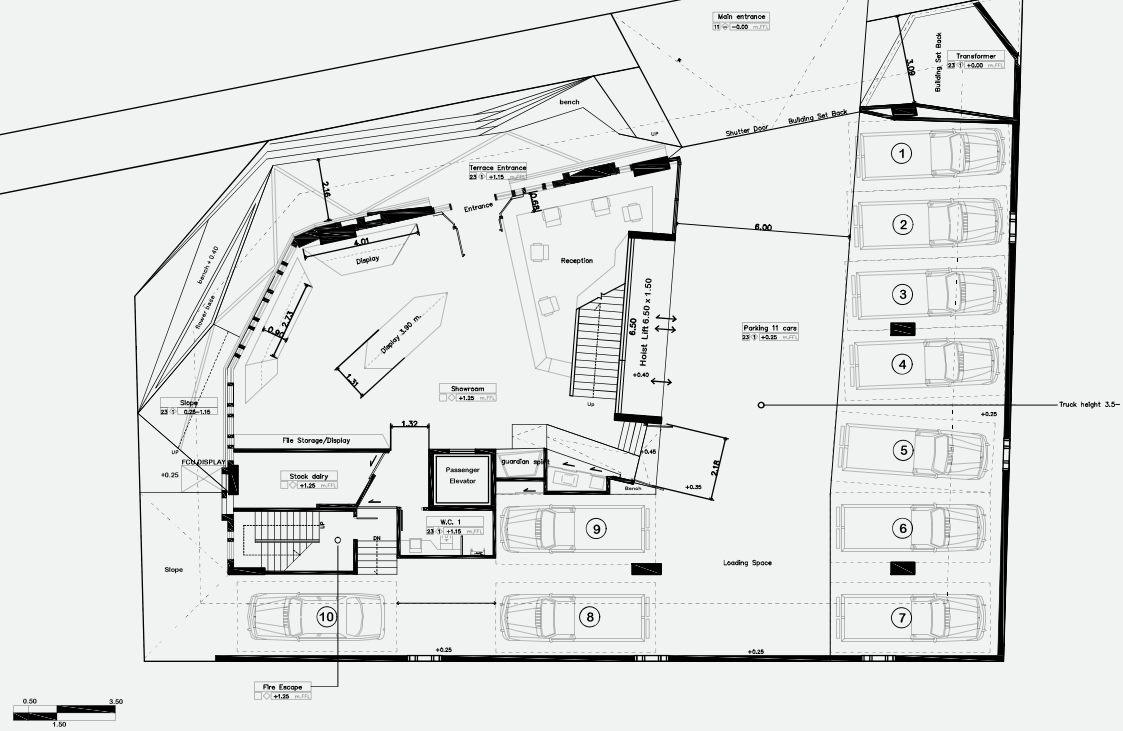
Architect Company
Plan1661 Co.Ltd.

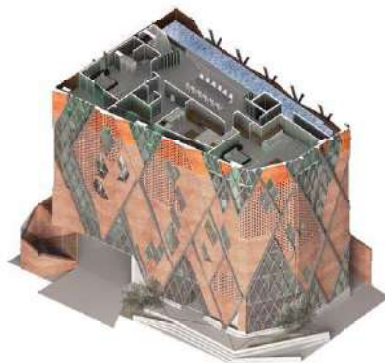
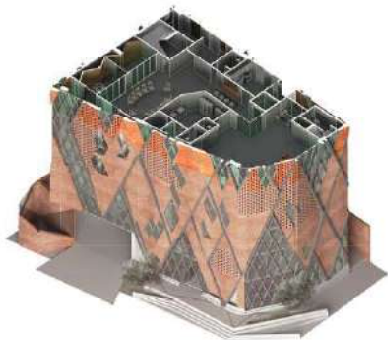
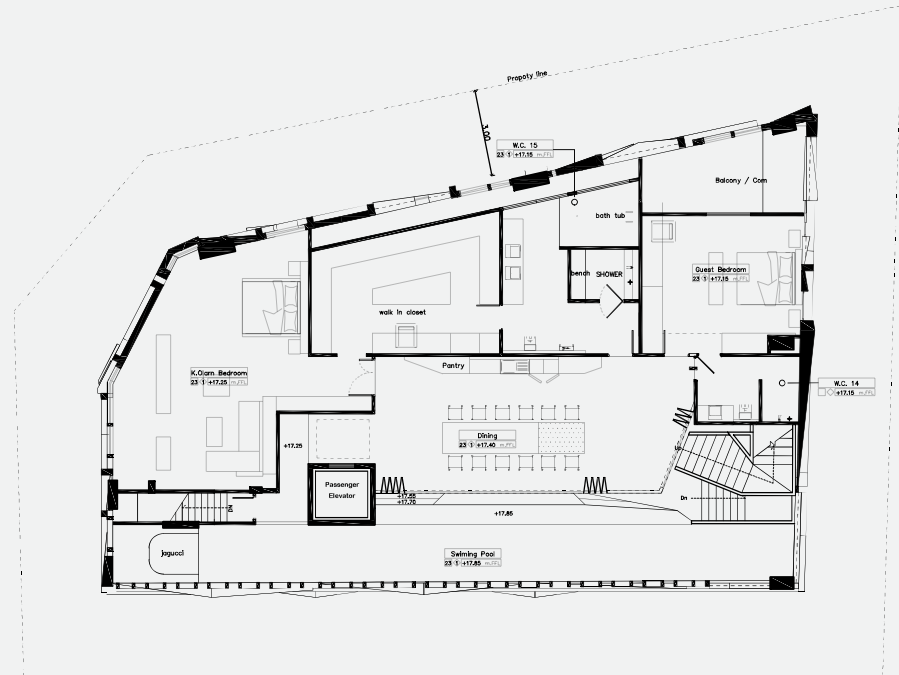
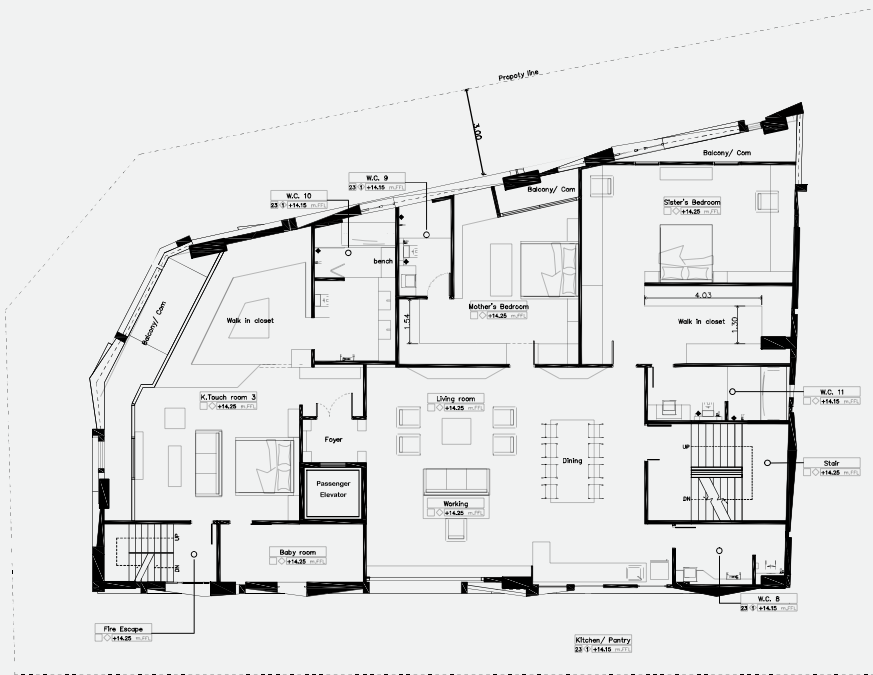
Responsibility
Architecture Design, Client Presentation, Video Presentation

Location
Kamphaeng Phet, Thailand

Status
On Construction Process







The Bangkok Forum

The Bangkok forum project received a silver medal (2nd place) for the architecture competition from Bangkok Civic Center Architectural Design Competition 2021. The Project Involved over 100 groups of participant.

The Bangkok forum is not just a place but a statement to resist a traditional public space and rethink the way how we design the space while questioning architecture position with the public space. The project develops from excessive research to explore the original concept of public space in Thailand. According to the study of Prof. Sutharin Koonphol has shown that to understand Thai public space requires to go back to history to understand the idea of 'Satharana' (เสถียรานน). In the past, the word serves as a negative connotation with the meaning of 'low and contemptuous' in the late nineteenth century this translated into public space as the condescending outlook on public eating. This has shown that Thai public space never develops clearly and result in a mixed and chaotic character between public and private space in Bangkok in the present.

For the above reason, how could we develop a truly Thai public space. If we look into the history of public space that establishes in our society, Sanam Luang represents as the first truly public space for Thai people with a long history that many social activities have firstly introduced into Thai society within the place. Even today public space of Sanam Luang remained only history, but it has become evident as a space to serve every class in Thai society. The success character of the place is not about designing the place to attract people to use it but instead, Sanam Luang provides empty space or void with the flexibility to allow public activities to happen within. This could be concluded that Thai public activities cannot exist by intention but exist through a void that allows the possibility to happen. For this reason, instead of directly designing the civic space our team focus on creating the void as a place for possibility and recreation to happen. Beginning from an analysis of 26 activities that related to Thai culture to understand how people use and occupy the space. Then activities purposed on the ground level as the most important program. The ground floor is designed to become an open system for Bangkokians to engage and recreate activity with extreme participation.

A modern public program like museum and gallery applied on the upper level and link with public activities through circulation. The Wall that surrounds the middle space provides a support facility to fulfil public space and create a buffer area and transition space from the surrounding urban context. These allow the project to completely blend and become part of the city.

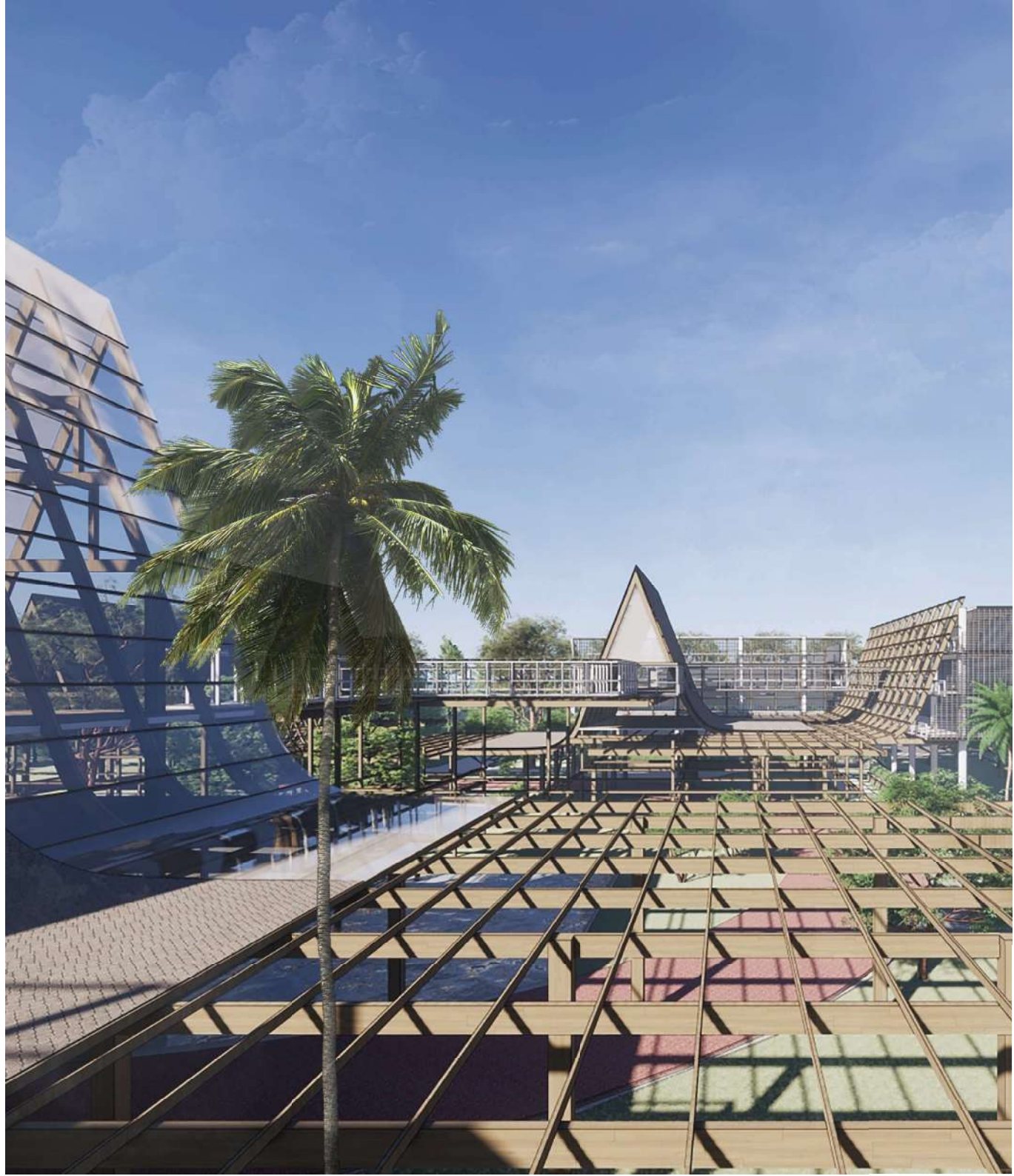
Project Year
2021

Project Type
Professional Competition Project

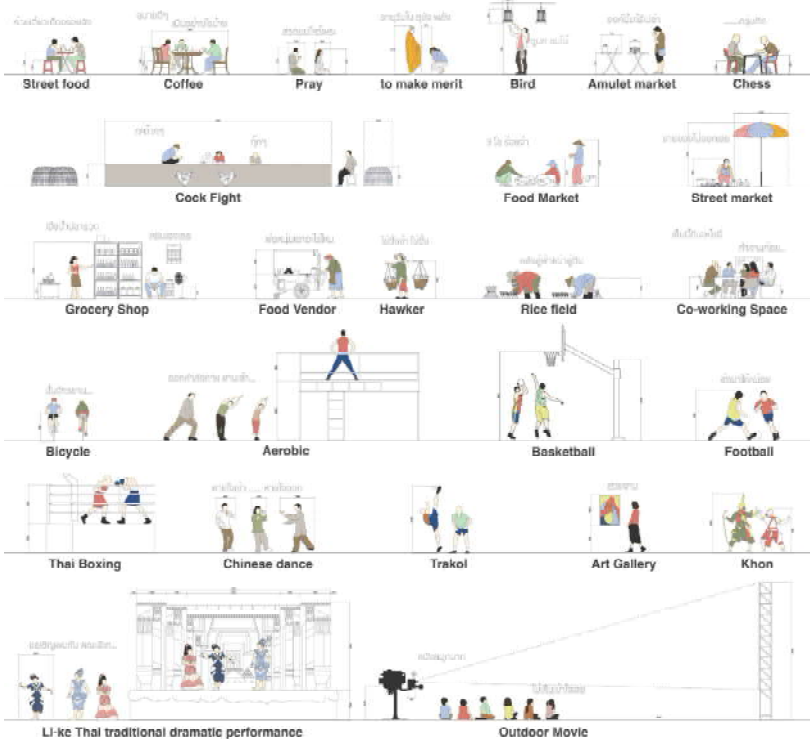
Responsibility
Research and Design Team

Location
Bangkok, Thailand

Status
Silver medal Winner

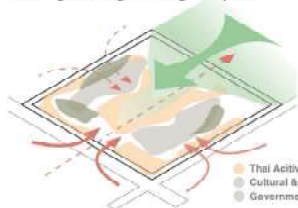


The project is research based design strategy which begin from an analysis of 26 activities that related to Thai culture to understand how people use and occupy the space.

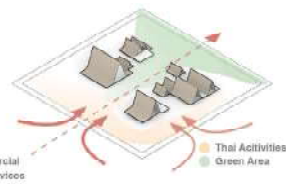


DEVELOPMENT DIAGRAM

1. Zoning and integration of green space



2. Space Layout



3. Elevated



4. The Wall



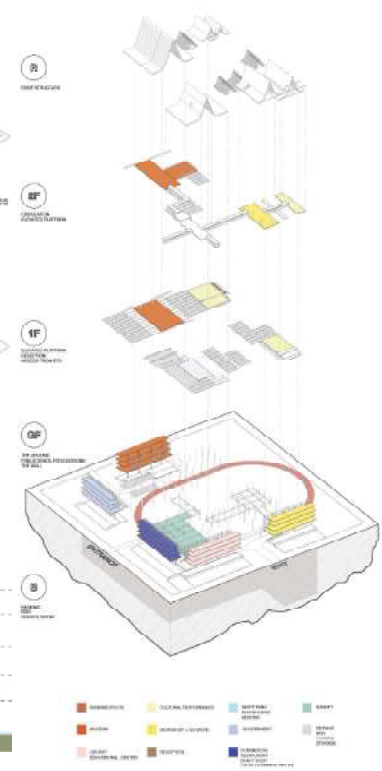
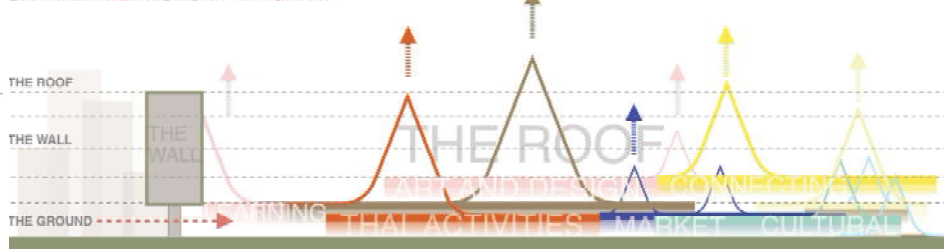
5. The Pathway Connection

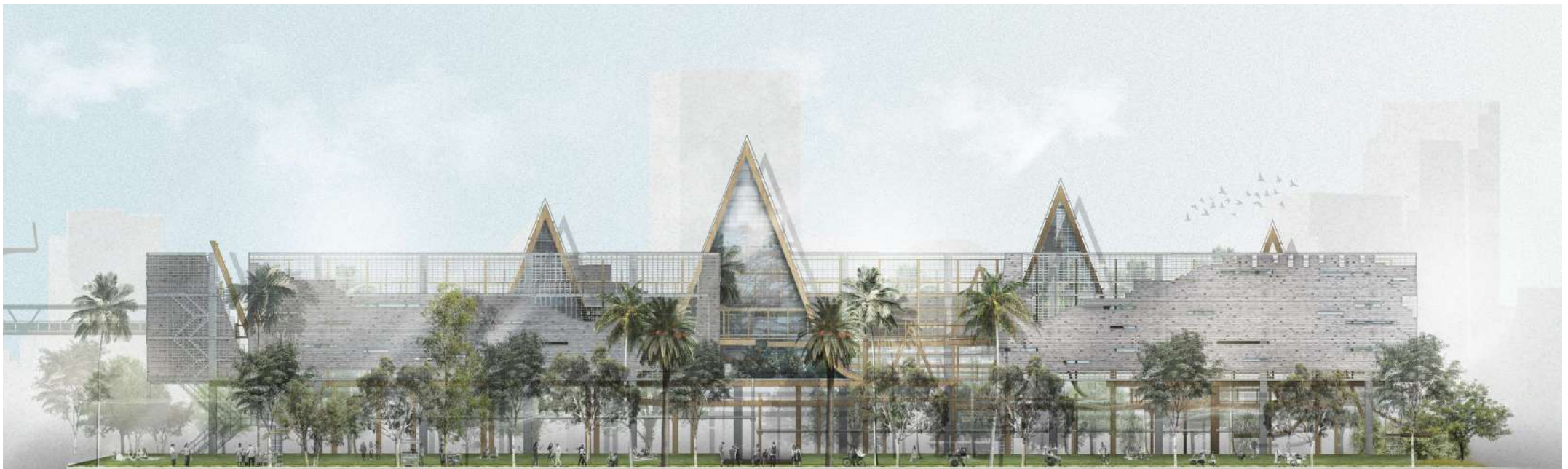


6. The Bangkok Forum



SPATIAL RELATIONSHIP DIAGRAM





No City: A declaration of the city in the digital era

Research project to question the architecture and city in 21st century. Final Dissertation for Postgraduate study at The Bartlett School of Architecture

The project premise is that capitalism is the only recourse for society. It has invaded every aspect of our lives: politics; economics; industry and society. The rise of digital capitalism has transformed the physical activities of production and consumption into the digital realm. Online transactions, delivery and working show how production and consumption have adapted to the digital age. Now that capitalism is digital the question becomes whether or not physical space is still relevant.

No City is not a design project, but a provocation into the possibilities of architecture within a city under the era of digital capitalism. No City represents a series of provocative visions of key spaces within London, transformed to serve the new era. The city is no longer a place of leisure, work or residence, but an opportunity to serve the overall interests of the country. No City is not an anti-capitalist manifesto, but rather a means to imagine capitalism's reanimation of the city in response to the digital era

Project Year
2021

Project Type
Academic Project

Project Member
Thale Kangkhao

Project Advisor
Hannah Corlett

Location
London, United Kingdom



CONCEPT



ARTICULATE

Text describing the articulation of the space and its relationship to the surrounding environment.

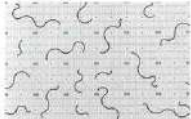
We are living in the late capitalism. Capitalism has invaded into every aspect of our life (area, public, economic, and society).



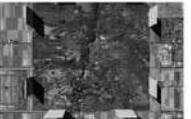
A diverse space of knowledge circle located in a commercial and business district in east London. A clock space converted to become a complex storage with large container for a purpose of logistic and storage industry.



Text describing the concept of a 'wall' and its symbolic meaning.



Text describing the concept of a 'network' and its application in urban planning.



Text describing the concept of a 'wall' and its symbolic meaning.

Text describing the concept of a 'wall' and its symbolic meaning.



Text describing the concept of a 'wall' and its symbolic meaning.



Text describing the concept of a 'wall' and its symbolic meaning.



Text describing the concept of a 'wall' and its symbolic meaning.



Text describing the concept of a 'wall' and its symbolic meaning.



Text describing the concept of a 'wall' and its symbolic meaning.



Text describing the concept of a 'wall' and its symbolic meaning.



Text describing the concept of a 'wall' and its symbolic meaning.



Text describing the concept of a 'wall' and its symbolic meaning.



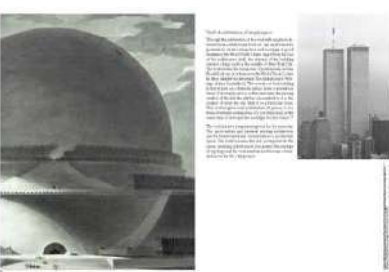
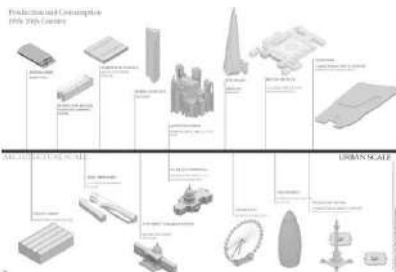
Text describing the concept of a 'wall' and its symbolic meaning.



Text describing the concept of a 'wall' and its symbolic meaning.



Text describing the concept of a 'wall' and its symbolic meaning.





The Water City

Reinvent the water culture back to the Bangkok city in 21st Century.

Bangkok city in the past used to have the relationship between the people and water. We can see obvious in many Thai culture that have a lot of participation with the river but the rise of road transportation have a lot of impact to the river culture such as reclaim some of the river into road for transportation and also some mega structure that have demolish the connection between both side of the road with a highway. This has blocked the connection between surrounding neighbor and river context.

The Water city project proposed to reclaim the river back to the neighborhood by using the special structure to create the expanding weaving structure surface that allow to create connection between both sides of river. This would reinvent the water culture back to water city.

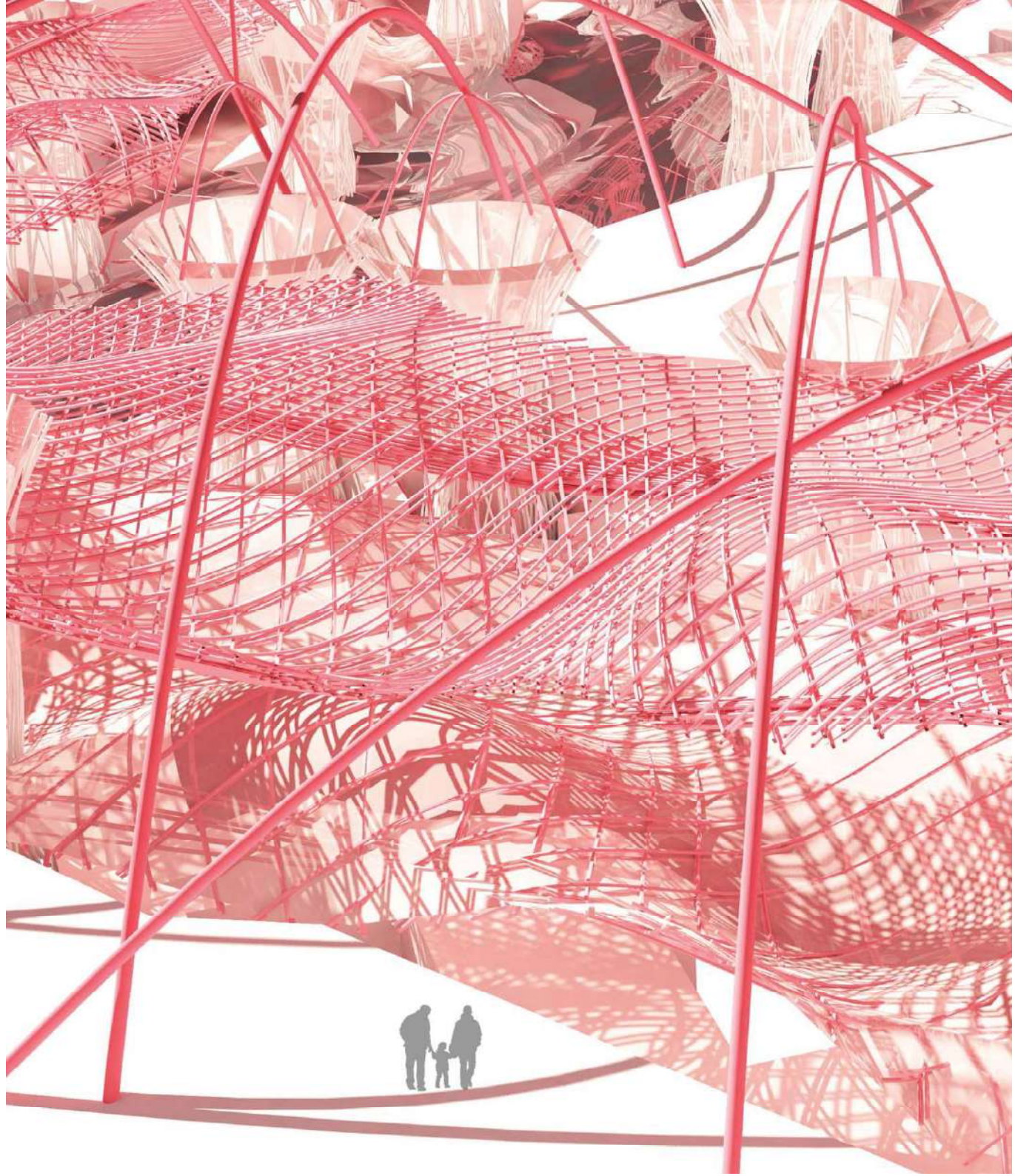
Project Year
2018

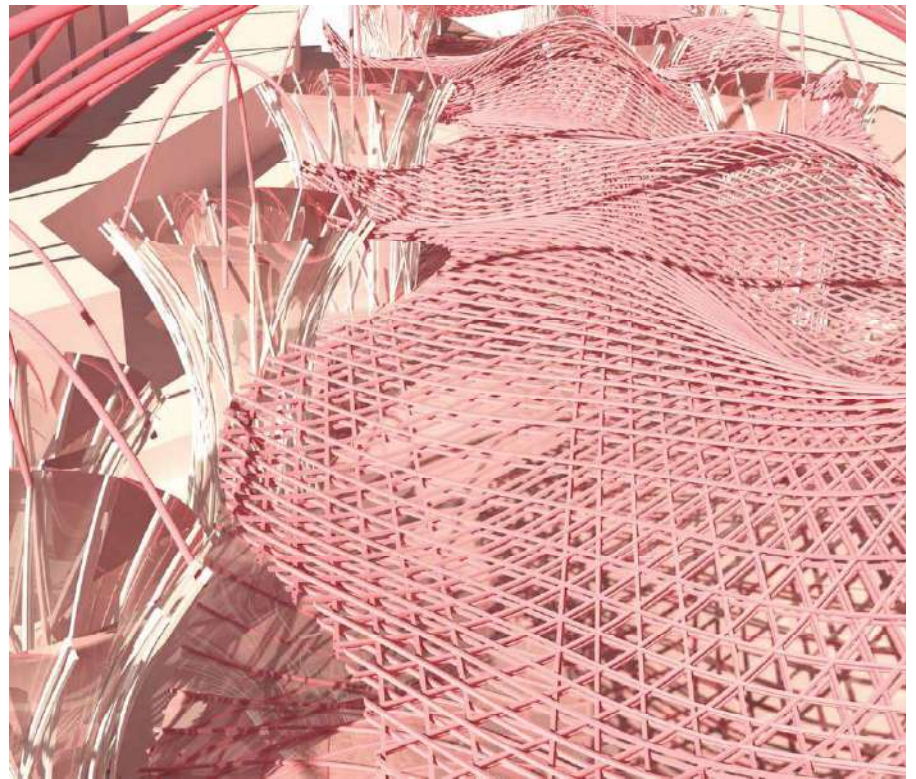
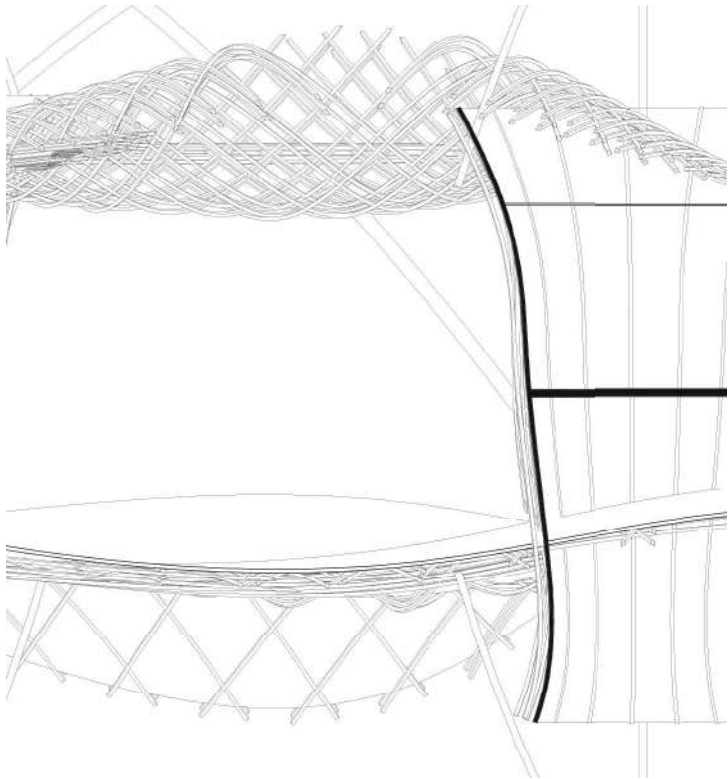
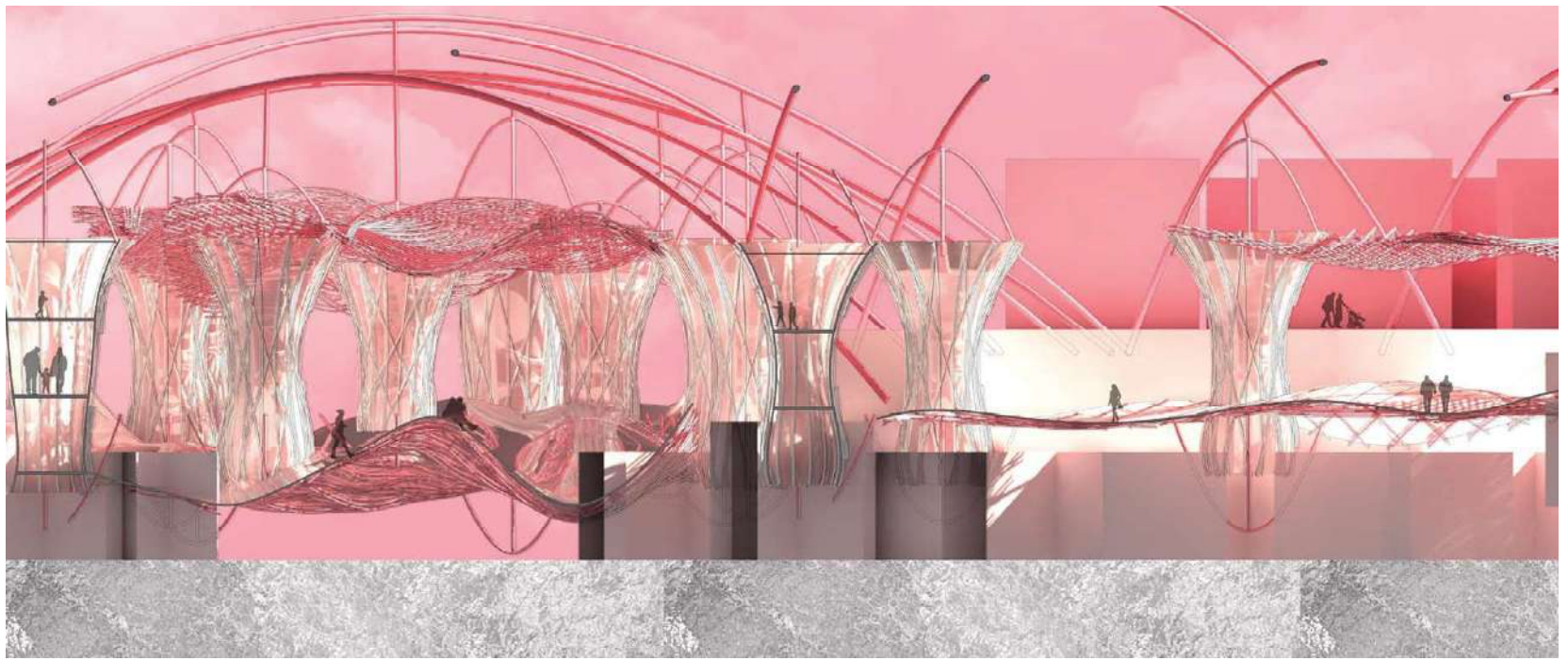
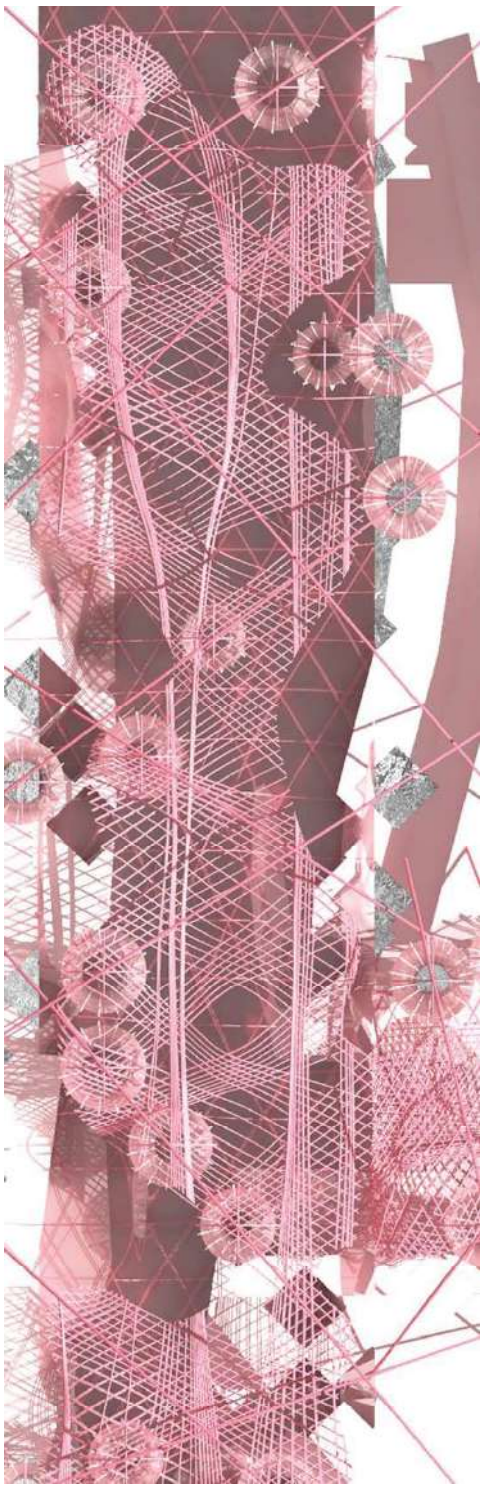
Project Type
Academic Project

Responsibility
Research, Design, Final Production

Location
Bangkok, Thailand

Status
Finished project







A.01

Display

Walk in closet

Display 3.90 m
Fitness
Multi-purpose room

File/Escape
+6.75

+1.32
+1.725

Passenger Elevator

Entrance Balcony
Foyer

Storage
Shower
+8.25

Mirror
+5.2

Shower room
bench

Shower 1

Shower closet
walk in closet

Quadrant spa
+17.70

Foyer
Up

Window room
+14.24

Reception

W.C. 12
together
Bedroom
+4.15
+4.25

Hoist lift 6.50 x 50

Dining
23.1 +17.40

Meeting
+5.25

Bath
+0.35
+1.75

Dining
+0.45

Storage
23.1 +8.25

Shower
Dining
+14.25

Laundry
hot outlet

Manager room
+5.25

Pool Machine Room up
+4.25

Storage
+5.25

Guest Bedroom
23.1 +17.15

Walk in closet

Guest Room / Mechanical
+17.25

Copper cover

Mark