



ITTILIT MONKHAM

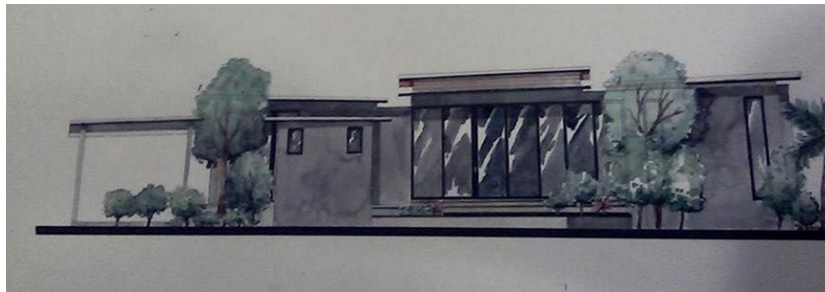
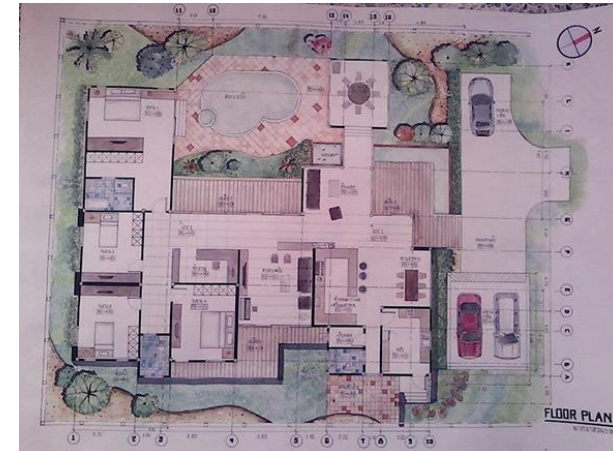
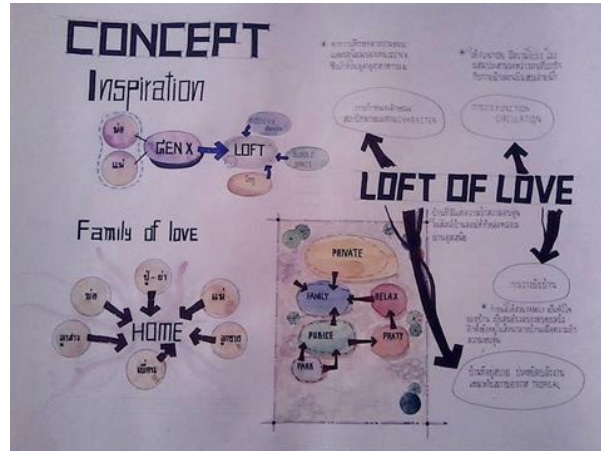
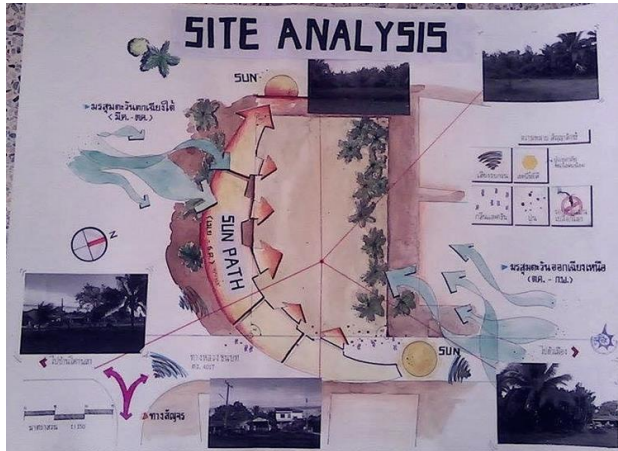
PORTFOLIO

architecture

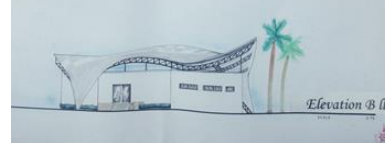
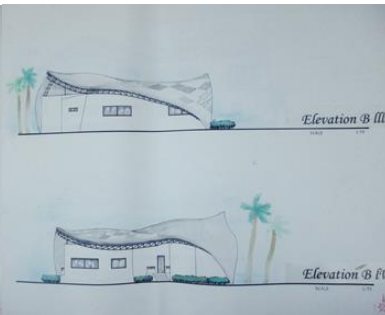
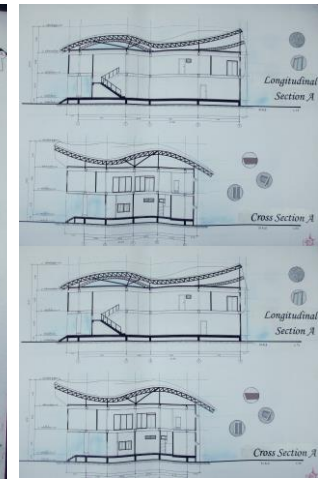
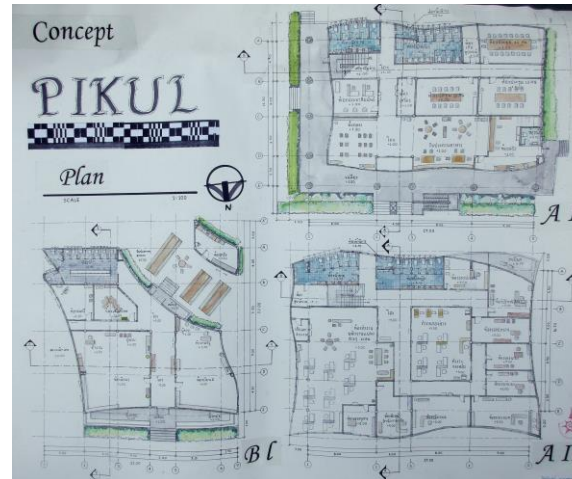
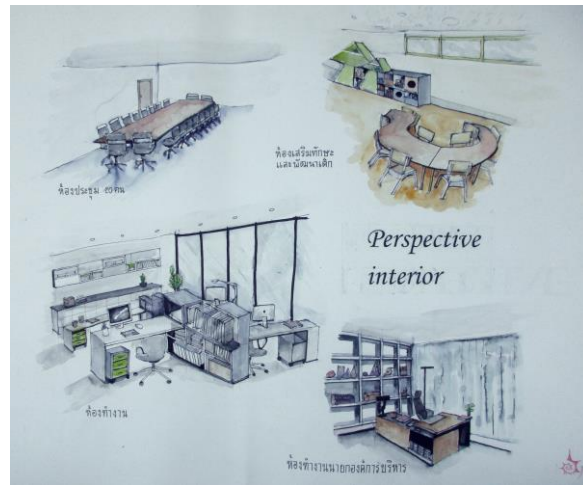
CONTENTS

1 Storey house	1
Subdistrict Administrative Organization	2
Community mall	3
Trang International Airport	4
Bangkok Hospital Trang	5
Sketch Design	6
KFC	7
W District	8
Stupa Tisaronusorsriwongmongkhontram, Nakhon Phanom	9
Contests : Creative courtyard Srichan, Khonkean	10
Model	11
Sketch	12

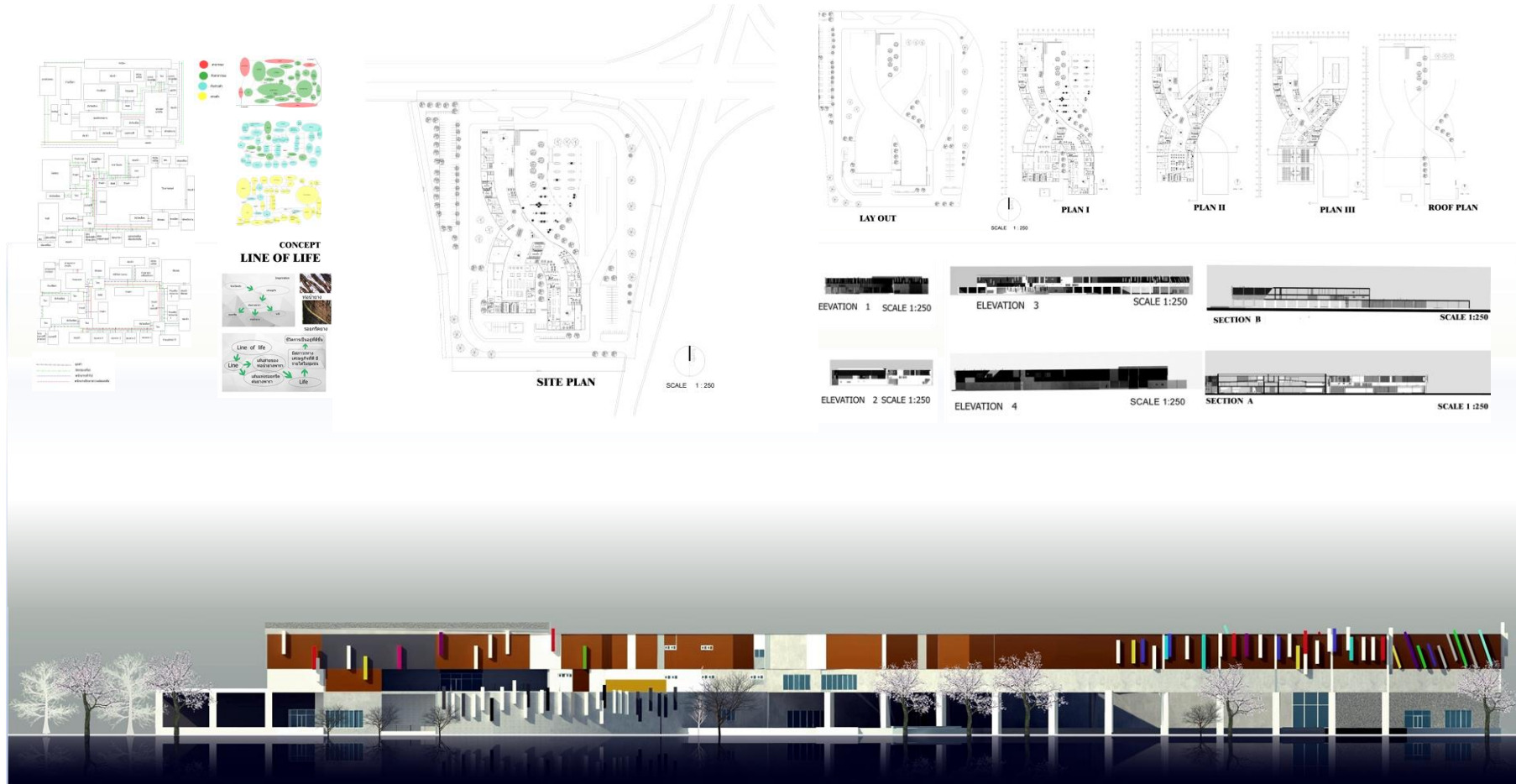
1 Storey house



Subdistrict Administrative Organization



Community mall



Trang International Airport

Kite of flying

Lay out

- Passenger (Green)
- International (Yellow)
- Domestic (Blue)
- Service (Red)

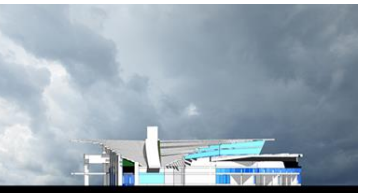
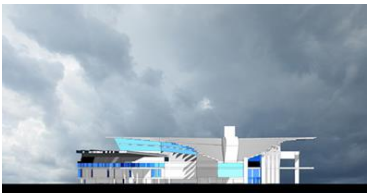
1st floor plan Scale 1:500

Mezzanine floor plan Scale 1:500

2st floor plan Scale 1:500

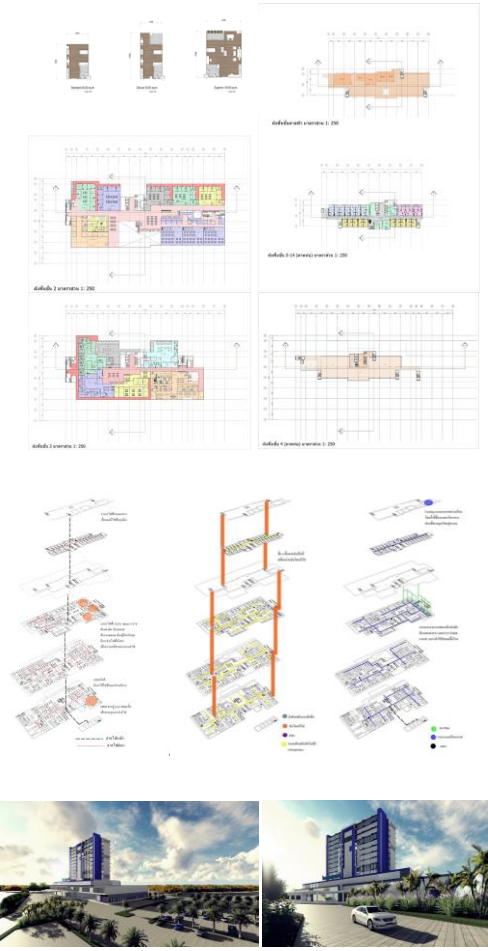
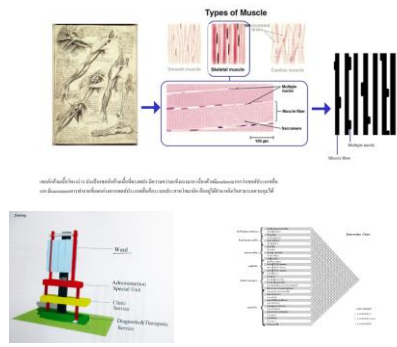
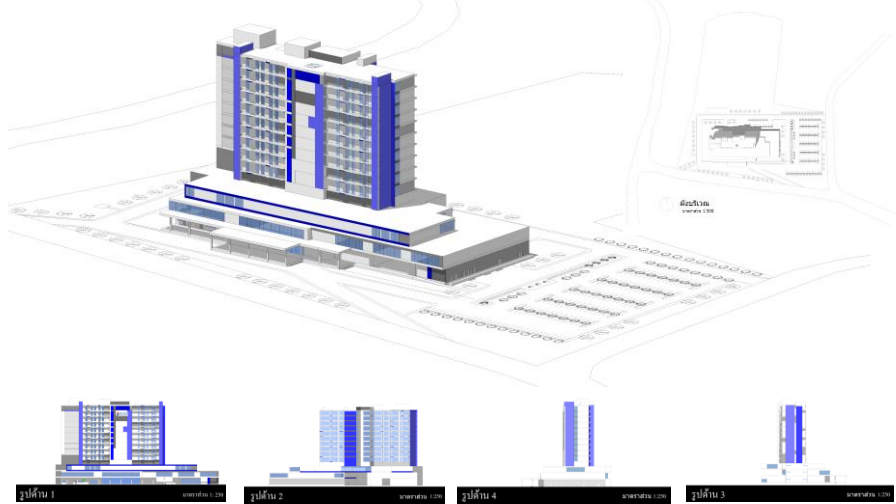
Section Traffic system Scale 1:500

- Arrival (Pink)
- Departure (Blue)

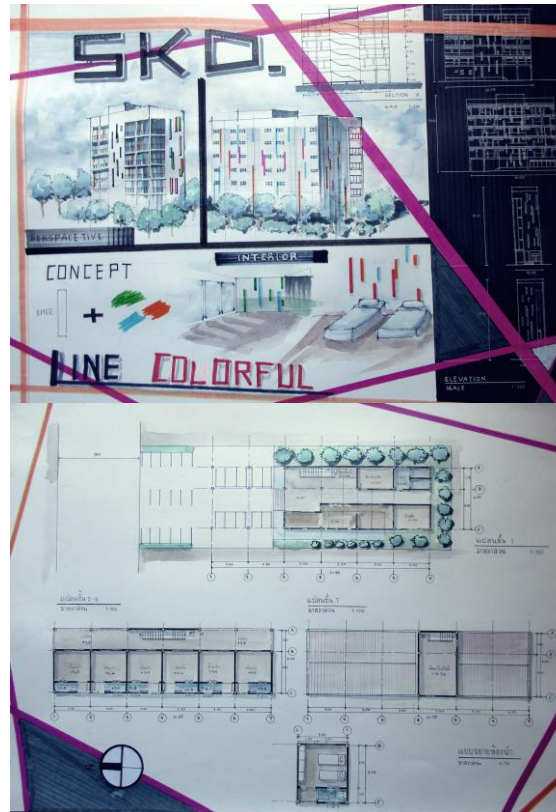
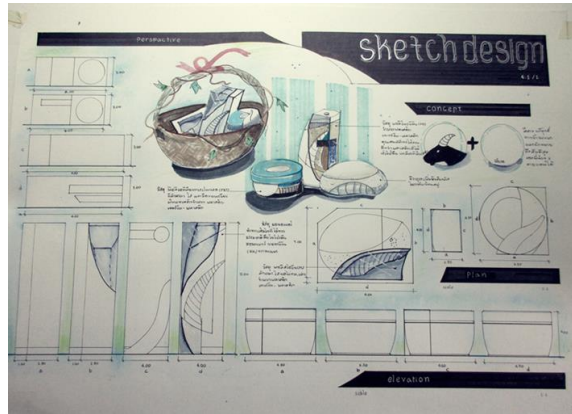


Bangkok Hospital Trang

BANG HOSPITAL TRANG



Sketch Design



KFC



1.KFC Yes Bangphli
2.KFC Aeon mall Hanoi

W District : Floor G



1.Bar
2.Food court

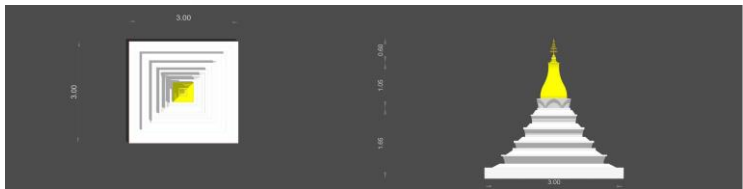
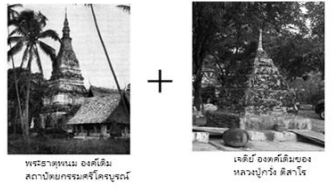
Stupa Tisaronusorsribowonmongkhontram,Nakhon Phanom



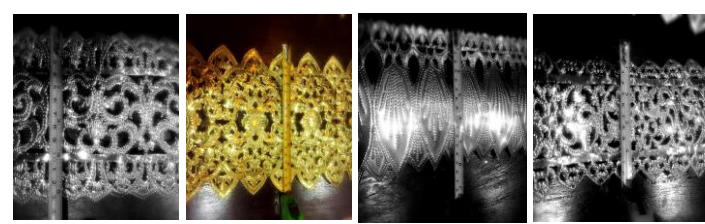
แนวความคิดในการออกแบบ



ในการออกแบบพระธาตุเจดีย์หลวงปู่ศรี ดิลาโร มีแนวคิดมาจากพระเจดีย์องค์เดิมที่หลวงปู่ได้สร้างไว้ นำมาพัฒนาต่อยอด เดิมทีในจังหวัดนครพนมเป็นเมืองหลวงแห่ง ราชอาณาจักรศรีโคตรบูนจึงได้ นำรูปแบบสถาปัตยกรรมศรีโคตรบูนมาใช้ในการ ออกแบบพระธาตุเจดีย์หลวงปู่ศรี ดิลาโร



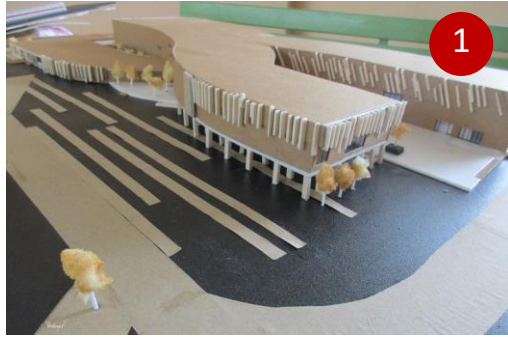
ยอดฉัตรทองเหลือง 5 ชั้น



ลายฉัตรทองเหลือง



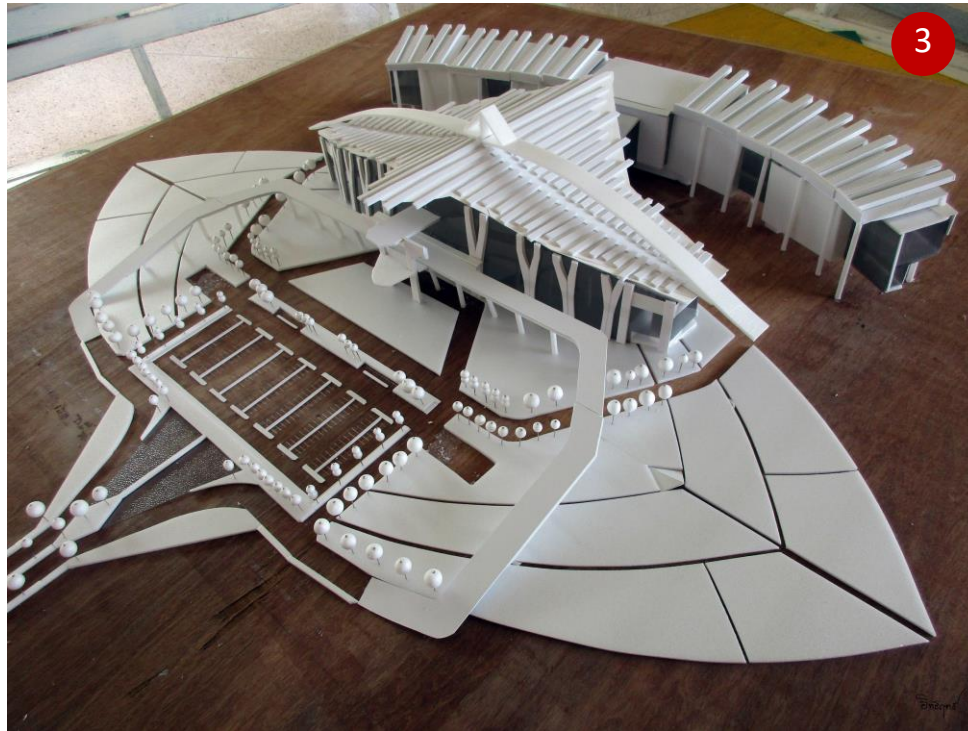
Model



1



2



3



4



5

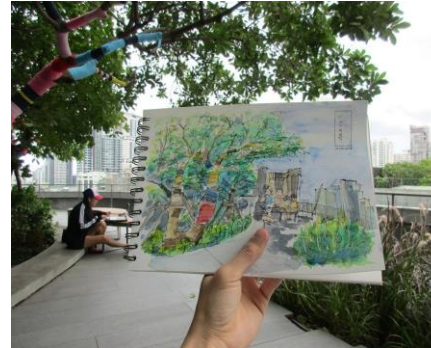
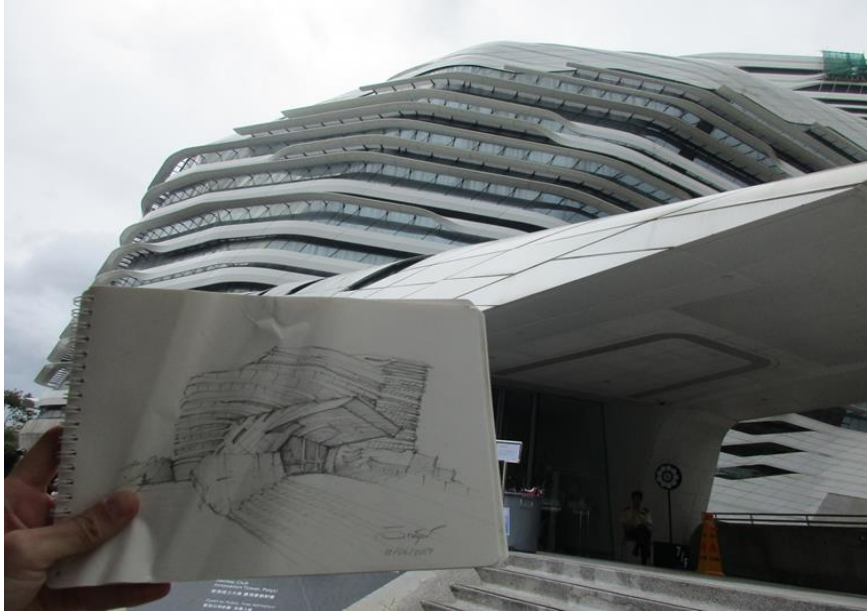


6

- 1. Community mall
- 2. Bangkok Hospital Trang
- 3. Trang International Airport
- 4. Tourist Resort

- 5. Hotel
- 6. Subdistrict - Administrative-Organization

Sketch



ITTILIT MONKHAM

mynameartna@gmail.com

093-4756950

