

Ψ SURASINEE PUNYANAN Ψ

PORTFOLIO

1

ANALYSIS & CONCEPT DESIGN
PATTAYA MIXUSED

2

BIM >> REVIT
MODEL PRESENT AND DOCUMENT

3

CONSTRUCTION SECTION
& COORDINATE SECTION

4

INTERNATIONAL WORKING
IN SINGAPORE DEPARTMENT

5

HOUSE AND VILLA DESIGN
C-11 VILLA SERIES

6

GRAPHIC DESIGN AND
COMPETITION

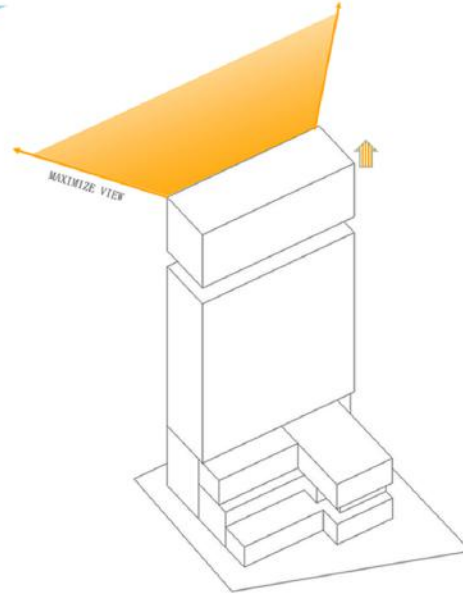
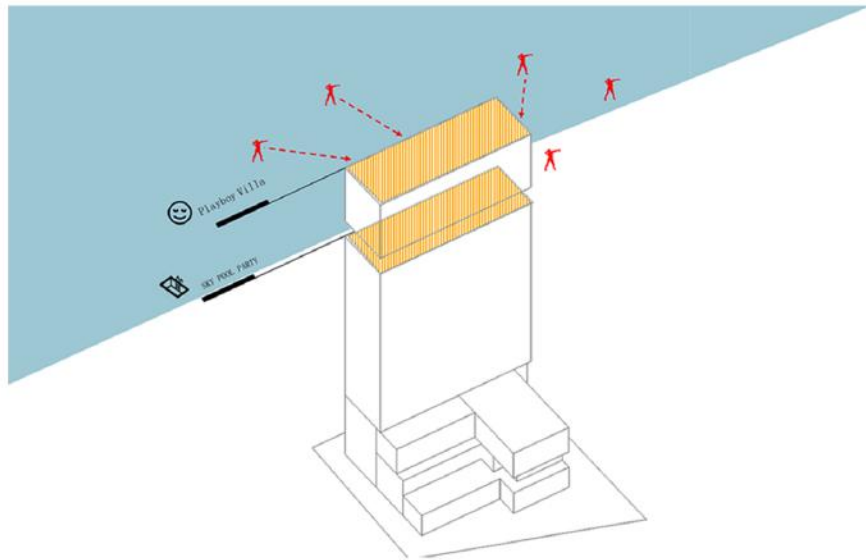
< CONTENTS



HONOUR PATTAYA

The aim of project is how design corroborate between outdoor and activities of the city.Both can work together to create space impactful in relation to the design.

There are two of building which is separate by two function. The first is hotel. There are incorporate element of night life with interior space.The next building is residential which is once hidden space has ability to welcome into the city and using nature in a function and aesthetic way.



PENT HOUSE



SKY POOL



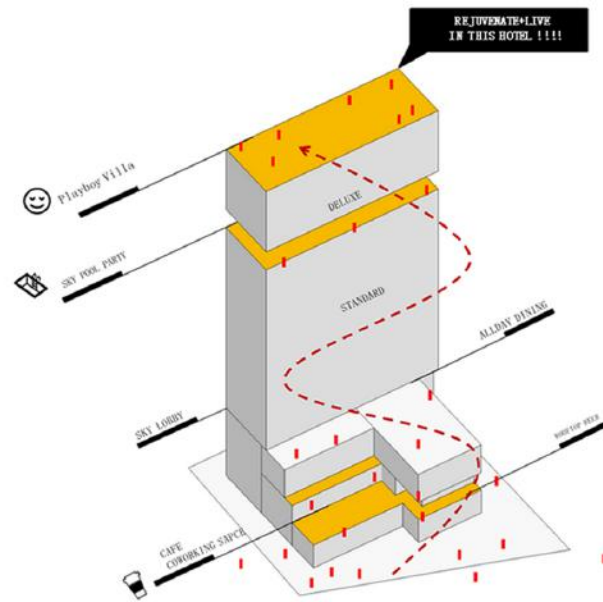
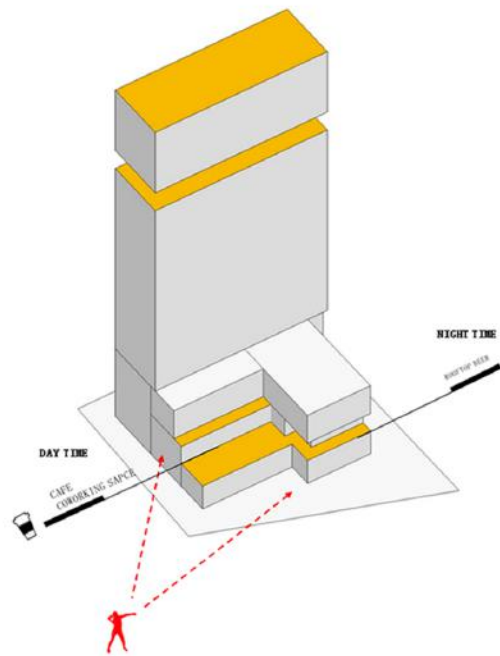
SEA LOBBY



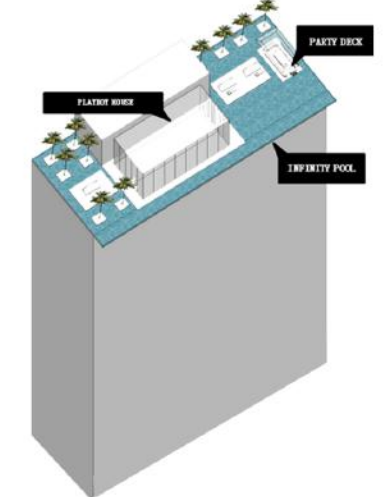
ACTIVITY AREA



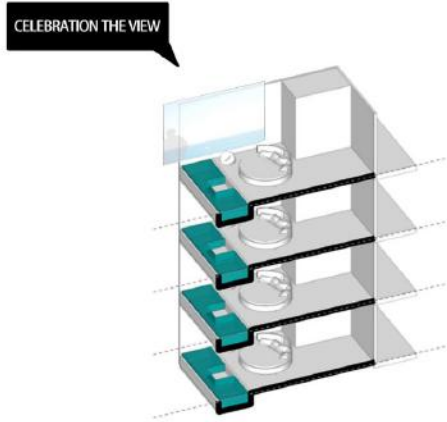
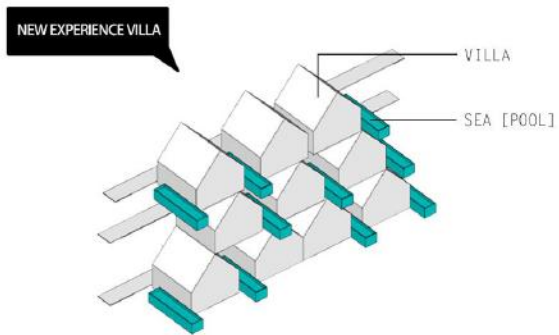
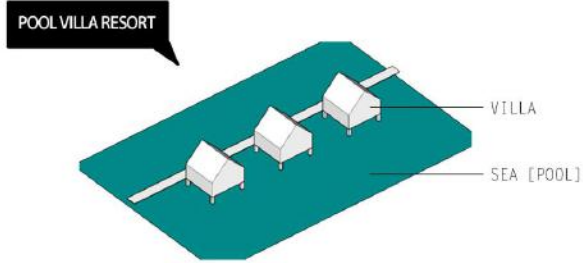
ACTIVITY AREA



HOTEL CONCEPT DESIGN SPACE



RESIDENTIAL CONCEPT DESIGN SPACE



Bringing greenery from park to doorstep. connection of homes
 To connect greenery from park on ground up the entire building through terraces and green walls, among other features.



UNIT DESIGN CONCEPT : NATURAL VENTILATION
 Pool villa unit studied to use wind as informative part of design process in order to activate which are interior and exterior environments by open the window to close with beach.

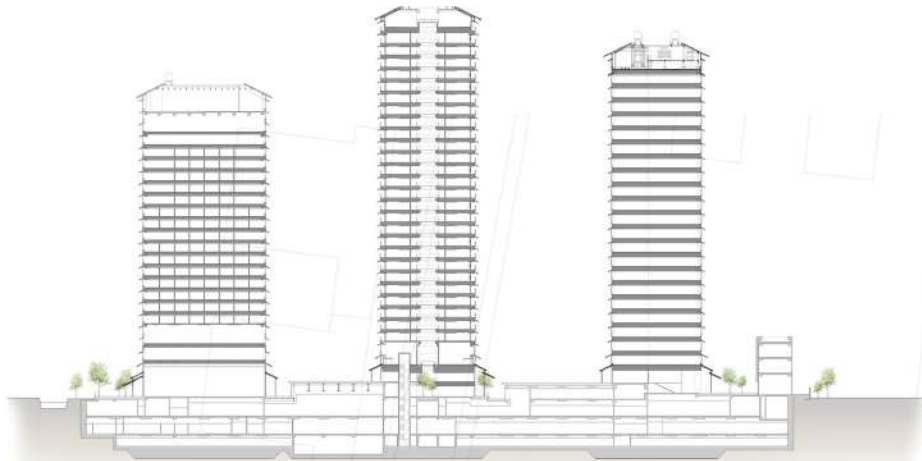


This project is ASEAN sector there are Japanese developer. The key concept of the mixed development is "The Garden for the people". As the title had suggested the development aspire to let all type of user to move through the site seamlessly without barrier. Straying away from the conventional approach of having retails and facilities situated at the podium, all the retail had been sunk into the basement 1. This further enhance the idea of seamless connectivity with the public.

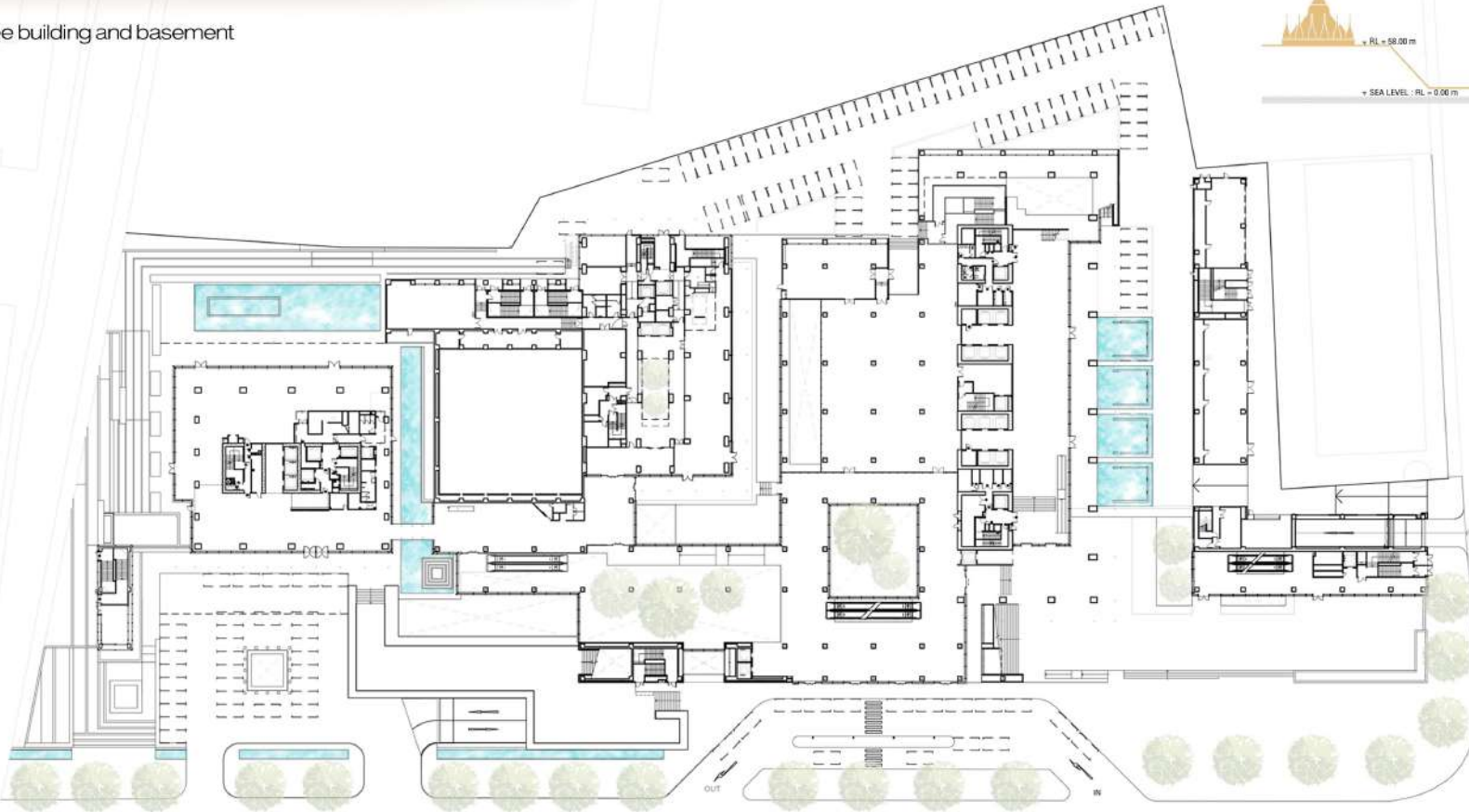
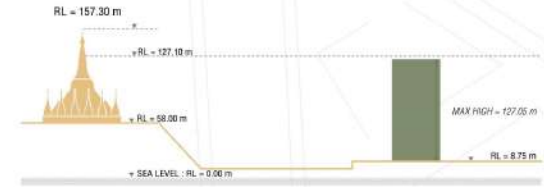
THE GARDEN PROJECT

Location Yankin district, Yangon, Myanmar
 Client Kajima Corporation

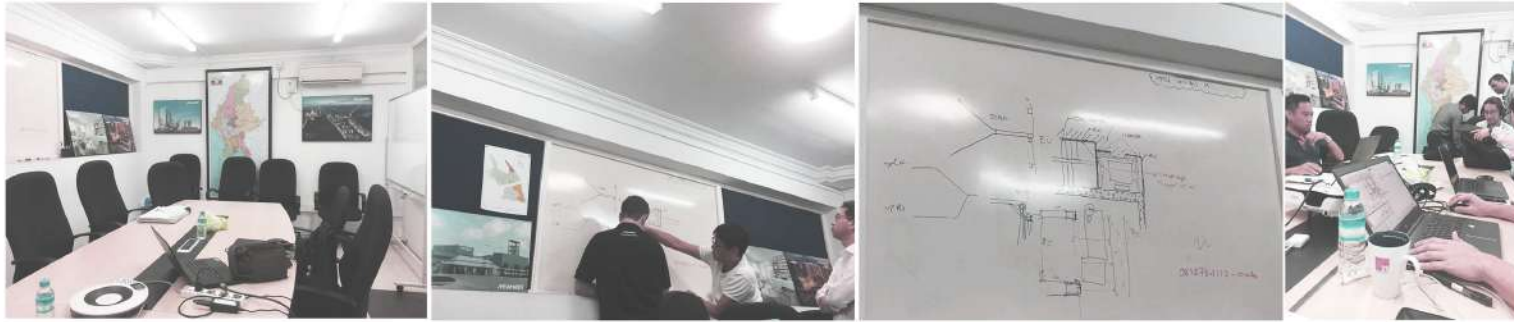
Program Mix used [Hotel,Office,Longstay]
 Total construction area 176,542.38 sqm
 Far Accountable Area 133,896.12 sqm
 Floor Area Ratio 4.93
 Project year 2019



Long Section to show three building and basement



Floor plan layout : Ground floor level



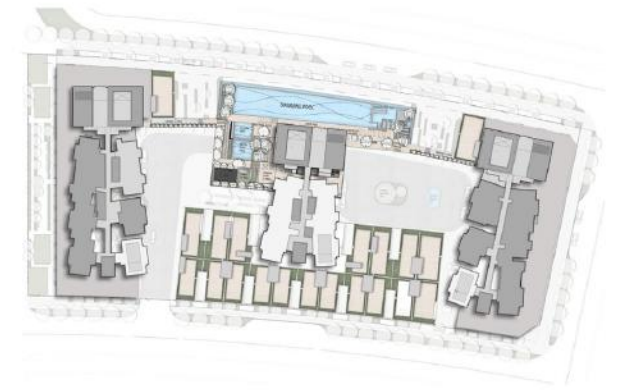
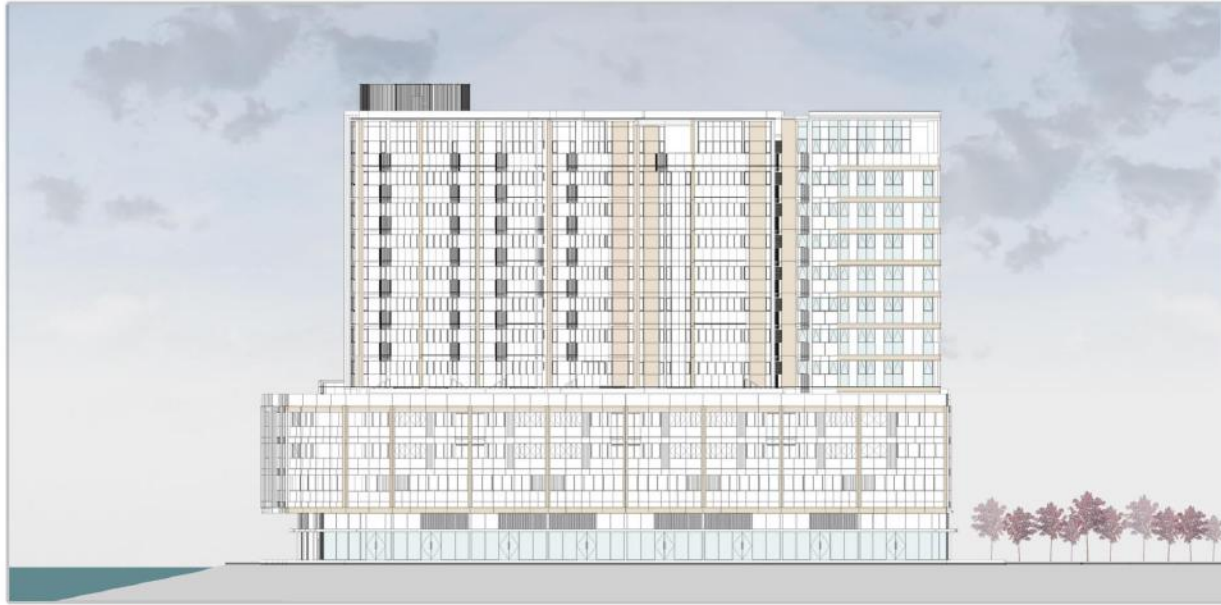
We joined coordination meeting with client and consultants including engineering, MEP engineering, and structure engineering at Yangon, Myanmar. The meeting which was found the problem of the project, For example, some area had beam crash with pipe of MEP than effects with drawing, So we coordinated to find the best way to decrease the construction on site.



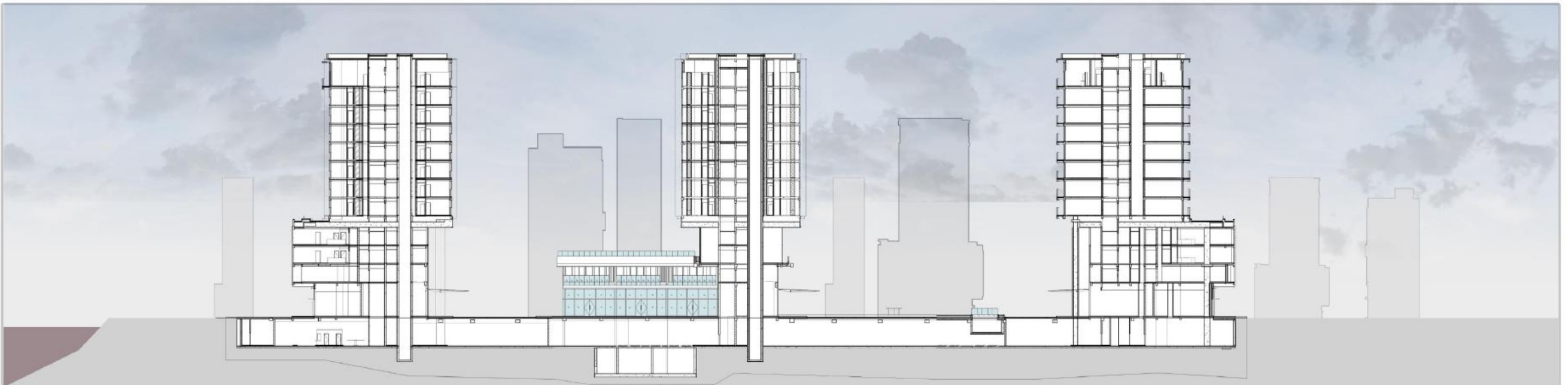
THE GALLERIA METROPOLE

The project is in Vietnam. There are in new province.
The site is in front of a new Vietnam 's opera house. There are three functions in the highrises. First is retail and communities to serve people surround there. The second is rental offices. There are three stories. The last is residential for sale in many types such as 2 and 4 bedroom, penthouse and sky villa.

The concept of this project from a rhythm of music.
The idea from surrounding which is the opera house in the front. Massing is one of the three options chosen by clients.



The project is in Vietnam. There are in new province.
The site is in front of a new Vietnam 's opera house.
There are three functions in the highrises. First is retail and communities to serve people surround there.
The second is rental offices. There are three stories.
The last is residential





Facade for construction Drawing :
 The facade and update drawing to
 construction on site. We draw the
 detail by Revit.





THE OPERA RESIDENCE

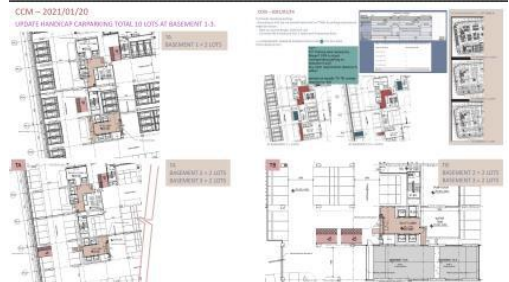
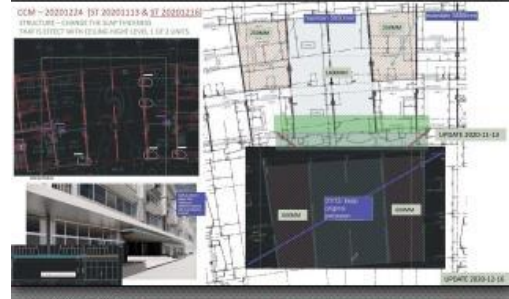
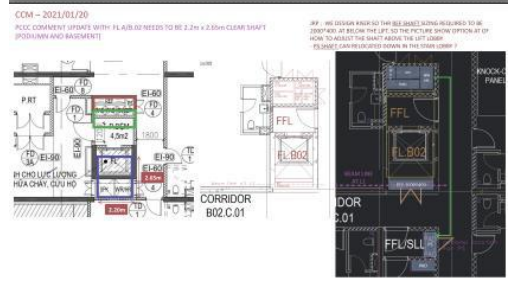
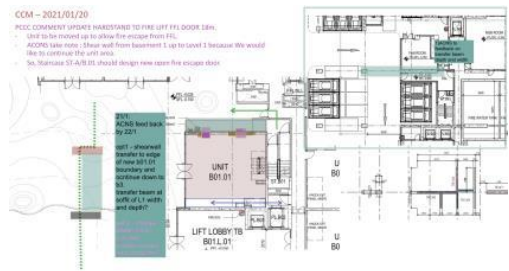
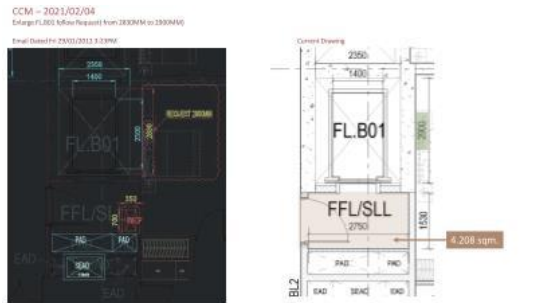
The project is in Vietnam. There are in new province.
The site is in front of a new Vietnam 's opera house. There are three functions in the highrises. First is retail and communities to serve people surround there. The second is rental offices. There are three stories. The last is residential for sale in many types such as 2 and 4 bedroom, penthouse and sky villa.

The concept of this project from a rhythm of music.
The idea from surrounding which is the opera house in the front. Massing is one of the three options chosen by clients.



Songkimland 17 is built in front of new Vietnam opera house. So the concept is relative with rhythm of the song and wave river. Where is near ith Plot 16. The project is one of the same owners with SKL 16. The building have 24 storeys. The first is office department for rent and many types of residential. Parking and Mechanical room stay in 3 basements.



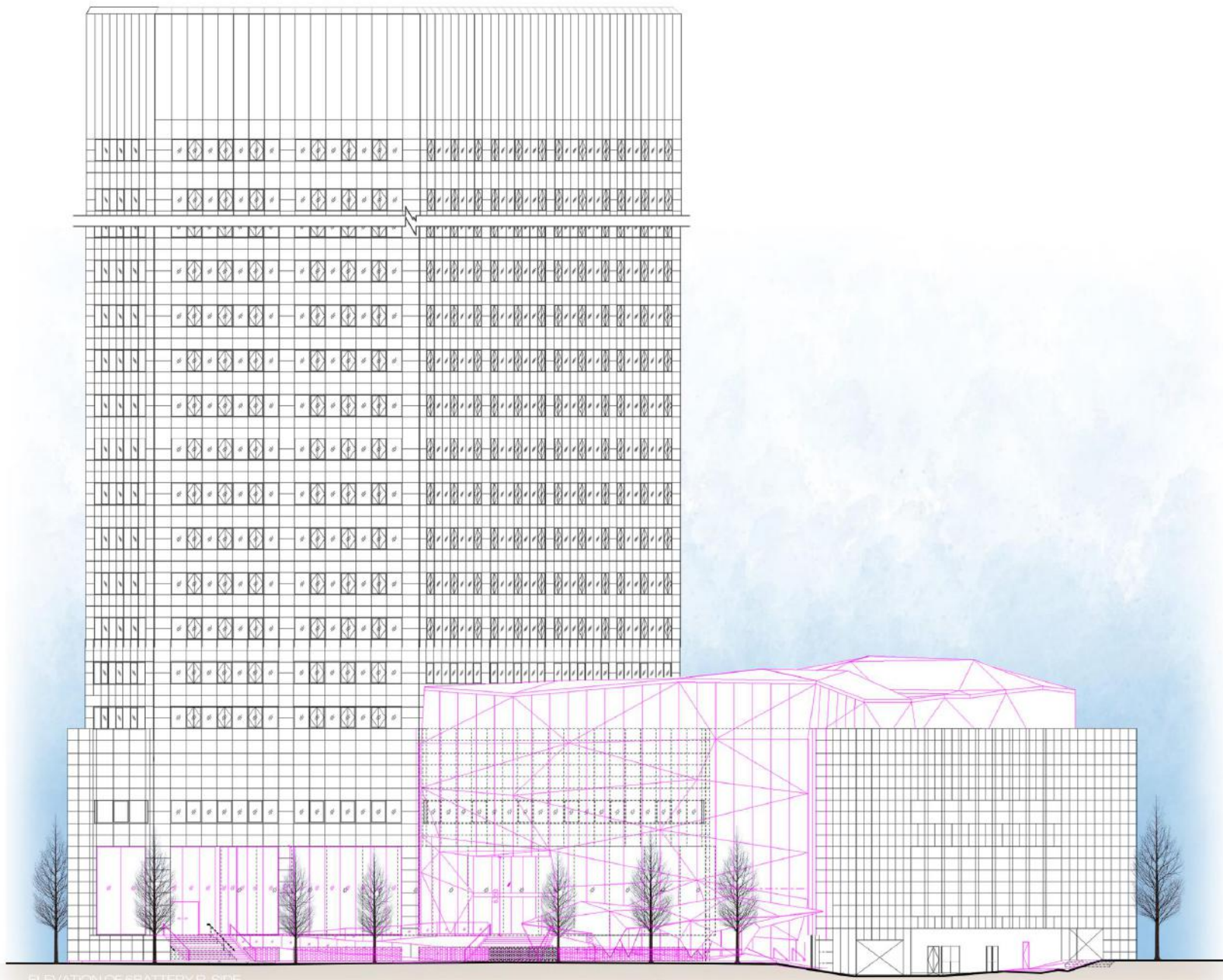


We joined CCM meeting with client and consultants, who are structure engineering, M&E engineering, and local Architect in Vietnam. The project on the for-construction part. So, I am prepared and compiled requirements and Q&A in meeting minutes every week for reminded and discussed with all our consultants.

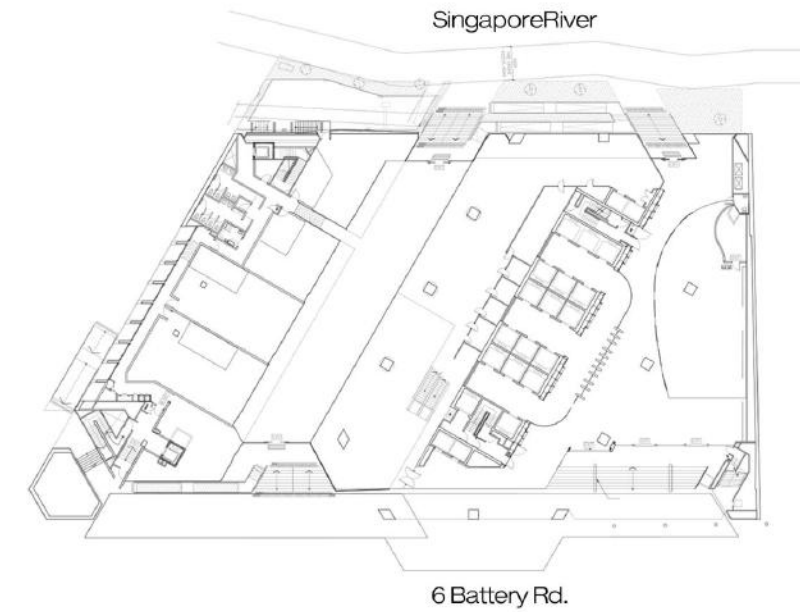
6 BATTERY ROAD

The project is renovated the facade of high building. The site is on between 6 Battery Road and Singapore river, So The owner would like to design new facade which is outstanding to be landmark and sculpture of Singapore river.



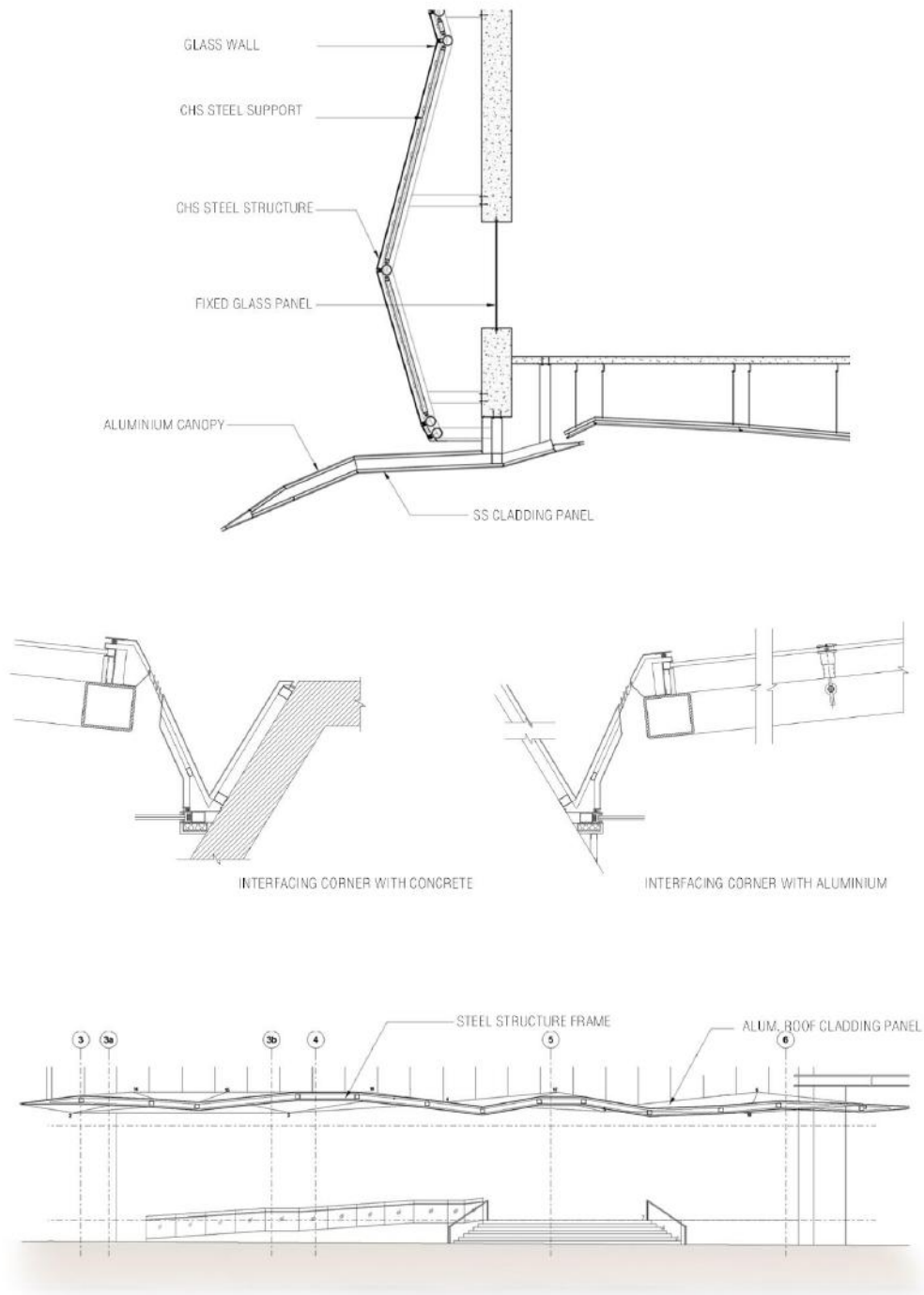


ELEVATION OF 6BATTERY R. SIDE



ELEVATION TO SHOW FACADE DESIGN

This is one option is chosen of the three option. The facade design scope is design two side of building First is elevation of 6 battery road ,the second is river side and interior design which is relate with exterior concept. So, my work scope are draw all tender drawing and learned all facade details.



- 1 The detail of facade show how to be joined with the building
- 2 Shopfront section to show the entrance canopy structure.
3. Two examples are interfacing in corner zoom in the facade aluminium folded were jointed with corner building.



The detailed drawing for submission coordinates with the Singapore department. I run the project with senior technical with themselves. So, The Singapore government submit a different drawing from Thailand. For example There are used colors to separate new and old building parts and the detail of facade which is an international firm and uses high technology in many details.

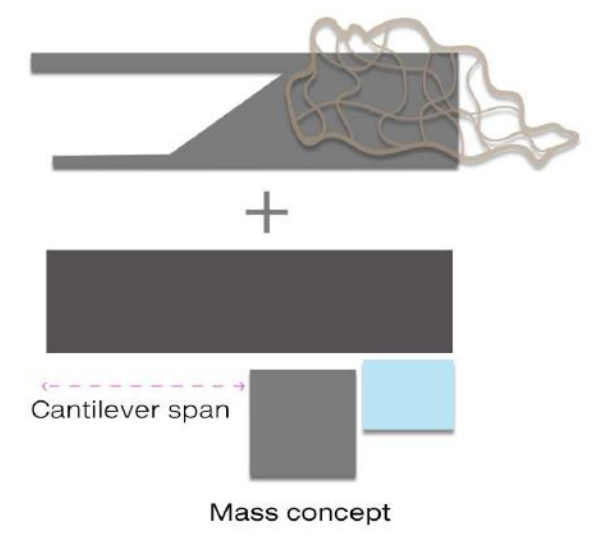
C-11 VILLA SERIES



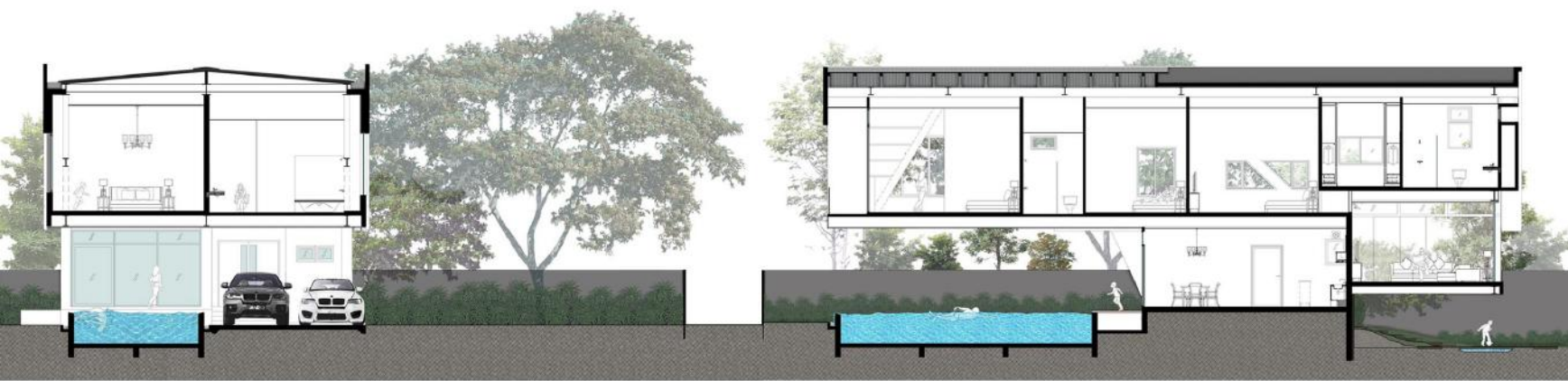
Location	Chiang Mai, Thailand
Client	Engineer and developer
Program	Housing development
Area site	10,138.69 sqm
Housing number	6 residential

There are needed to design an unusual housing estate. There are structure extraordinary designs. I supported all design with exterior and interior. They are designed to cantilever's structure long spend to show the function area.





Facade cover to behind the house



^ The idea of house is show how support of design and balance structure. It become modern form. This is the facade cover half of the house. There is create private space of bedroom and reflect sunshade from outside to decorate living room on ground floor.

< The first is short section to show front of house. The second is long section to show all the room and cantilever support from structure.

The idea of designed interior chosen natural materials and color tone , Who lives in the house can gets feel relax and comfort in the room.In living room like to close up with nature. There are contrast with exterior.

Metrial

Floor : Granit stone

Wall : Wood

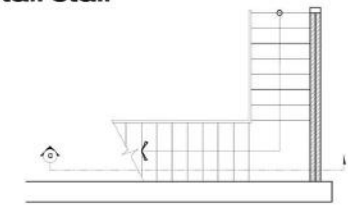
Flame window : Wood

Furniture : wood log , sofa , shelves

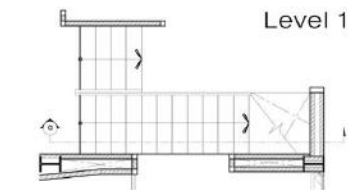
Color tone



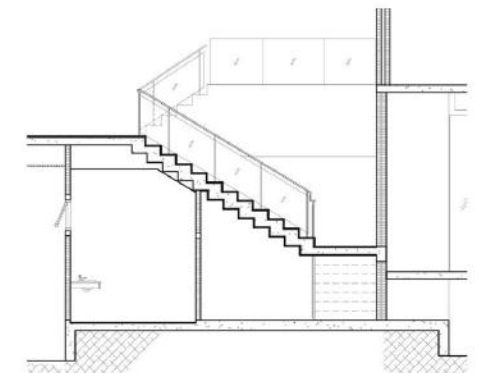
Detail stair



Level 1 detail



Level 2 detail



Section a-a



[INTERIOR PERSPECTIVE]



[INTERIOR PERSPECTIVE]



[STAIR LOBBY PERSPECTIVE]

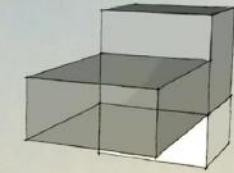
Separate mass
2 storey



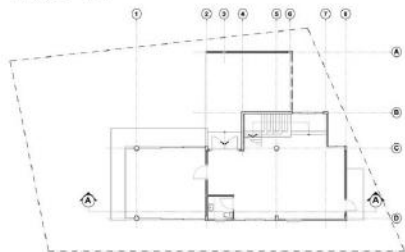
Maximum high



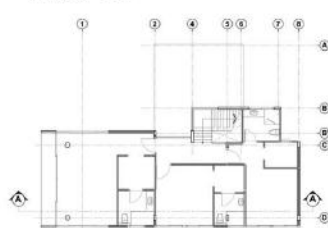
Extend massing
for orientation and view



PLAN - L1



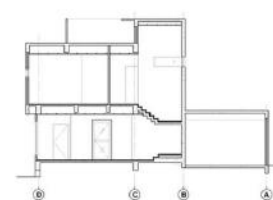
PLAN - L2



SECTION A-A



SECTION B-B

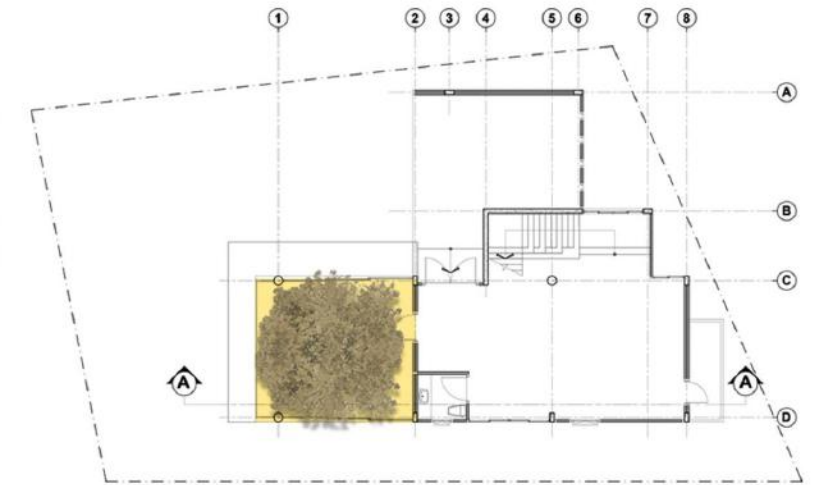


Perspective show, The idea shows dynamics box.

There are moving modular with balance. Mass extends in the middle to create view and private room. There are use space below to be living connect to garden.



[The old Ideal to keep the tree in middle of living room].



The first layout site



[New living room cutted of the tree.]



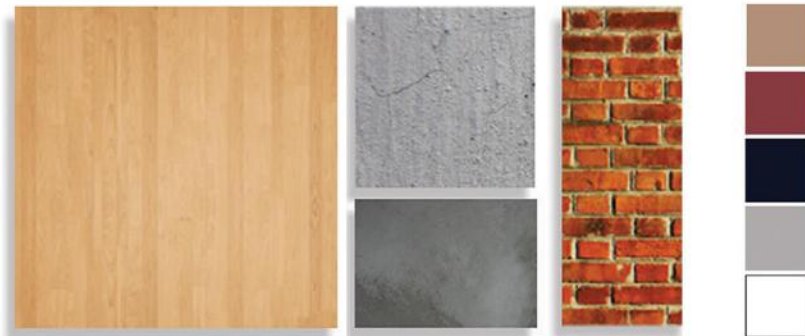
The first elevation idea

This project has one big tree belong to a site. The concept makes a house near nature. The first option is design to keep the tree which is the living room area as shows on plan and section. In addition, the owner decided to take off it. one of the results is maintenance cost and decorate will make moreover budget. On the other hand, estimate the price in budget and get a bigger space living room.

FARM FIELD COFFEE SHOP

The project is a renovated old shop. The location is in front of the Department of Livestock. So, we design the coffee shop's atmosphere to stay in a European farm. We use an earth-tone color scheme to make a warm and relaxed feeling. Decorations are in a loft style. There is raw material such as wood floors, polished walls, and exposed brick wall lines. Furniture is designed from milk tanks and transformed into tables.

Material and color schematic



Furniture design

Loft table and chairs

Milk tank table



Long Section - Show space between indoor and outdoor.