

BLA HQ

Bangkok Life Assurance Head Quarters

Year : 2018 - 2019
 Location : Wong Sawang, Bang Sue, Bangkok Thailand
 Use : BLA Head Office & Rental Office
 Design Architect : Design 103 International



Bangkok Life Assurance New Head Quarters, consists of 2 buildings; Building A: consisting of convention center, executive area, office & sales executive area, retail and car park on 32,640 sq.m.; Building B: consisting of welfare area, executive area and car park, etc. on approximately 7,236 sq.m. Total area of 2 buildings approximate on 39,876 sq.m., Bangsue, Bangkok

Lighting design will focus on empgasizing the architectural elements by using the line of light to delicately embrace the building in the same way as lotus petals and using blue and white lights to demonstrates the corporate identity of the organization which also represent policy and governance.

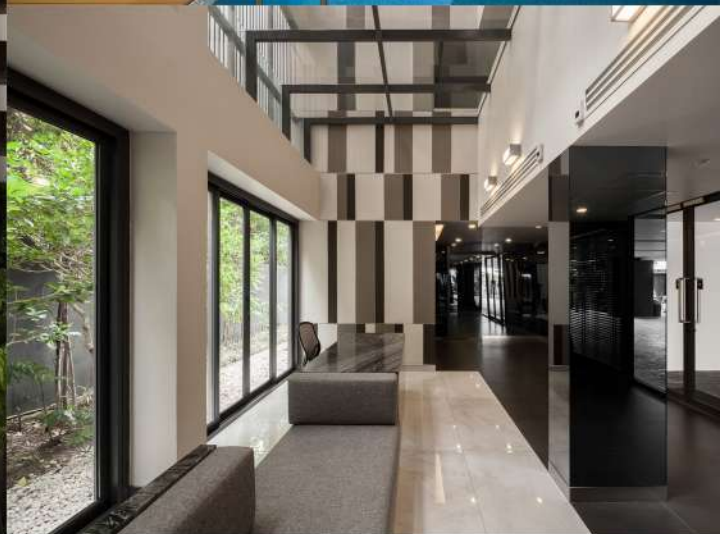


Masterplan



BANGKOK TRYP

Year : 2014 - 2016
Location : Soi Phaholyothin 3, Bangkok, Thailand
Use : Serviced Apartment
Design Architect : Somdoon Architects



Bangkok TRYP is a serviced apartment project located in the city center, among the high-rise office buildings and residential with slight green space. Therefore, the project idea emphasizes on creating the green environment by integrating a 'vertical garden' into the building besides the landscape design on ground.

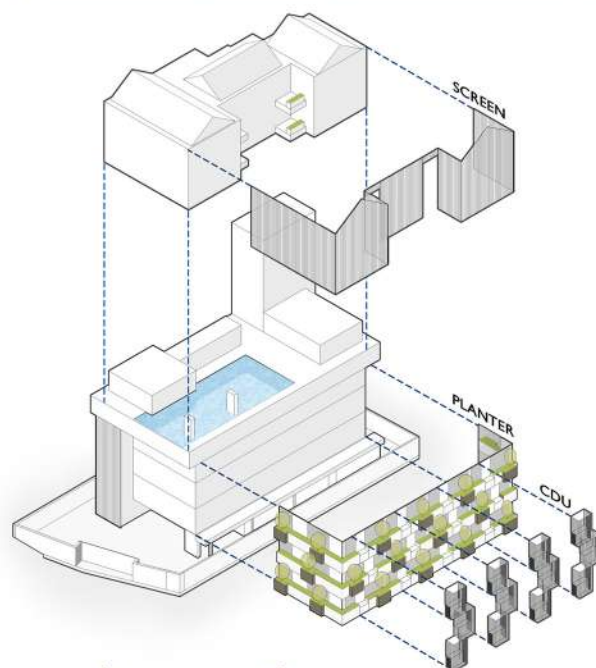
The building form is separated into different parts according to the user's programs. The 7-storey building consists of lobby, office, spa and parking area on ground floor, the rental units on 2nd to 4th floor, public facility on 5th floor and owner's private residential on 6th and 7th floor.

According to the limited area and units, the building provides a single corridor on the northern side, adjacent to the high-rise neighbor building. While all living units face the southern side that provides a good view. Thus, the medium-height trees and bushes are planted at the balcony, shifting with aluminum grills that cover the air-condensing unit, to act as a shading device that protects the interior from a strong sunlight and gives building a cool atmosphere during the daytime. These create a building façade pattern that responds to its function.

The building orientation creates a wide semi-outdoor corridor and a 3-storey opening for building lighting and ventilation. At the ground floor lobby, a skylight roof is designed to separate the indoor from the outdoor area and to give space the continuity.

All public facilities are on the 5th floor that partitions the owner's private living floors on the 6th and 7th floor from the rental units on the lower floors. The swimming pool is on the building edge for a pleasant view while the gym gives users a view of the swimming pool and a garden on the other side.

The 2 top floors present in a distinguished gabled-roof form like the houses that sit on top of the building. The building façade on the typical floors are covered with aluminum grills, painted in warm wood-brown color, that not only filter the sunlight and heat for the building but also create user's privacy with a pleasant view at the same time.



MORI HAUS

Year : 2015 - 2017
Location : Sukhumvit 77, Bangkok, Thailand
Use : Lowrise Condomenium
Design Architect : Somdoon Architects



Living near the heart of city close to a major train station and still being surrounded by lushness of tree grove is like a dream for working people who need convenience from mass transportation and still can relax with soothing greenery at home.

This ideal is brought to reality by introducing a scaled version of forest onto our large landscape area in the internal court with a tiny lagoon that you can swim or recline on a cozy couch and enjoy the nature sound of flowing water. This unique experience would let you enjoy spending quality time at the house you can proudly call home.

The 2 buildings are like a small village wrapping around this secret forest. All the rooms facing internal have a balcony extended to reach for the greenery. Whereas the rooms facing outside have their own tree at balconies bringing nature even closer to lifestyle. Choices of room with double glazing balcony or full open one are offered to suit individual's preferences.

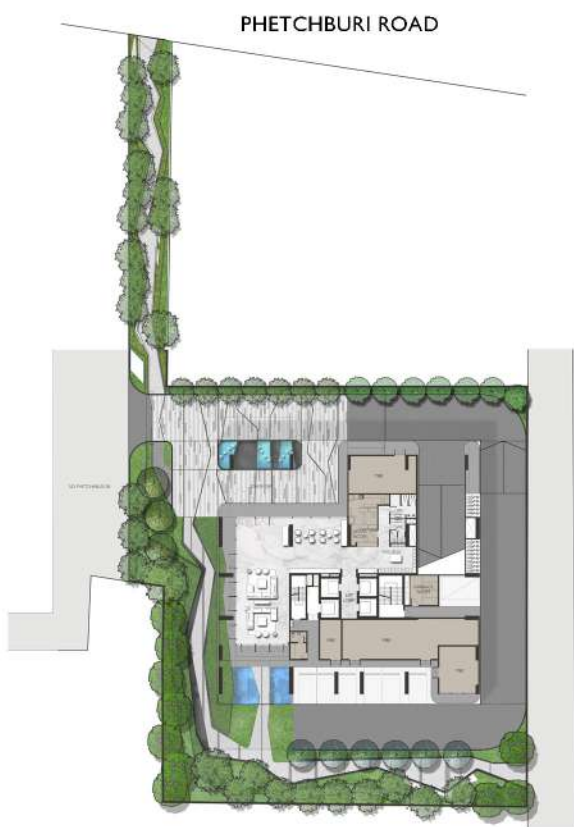
Common areas such as lobby and gym are being placed in a special building camouflaged itself harmoniously in the midst of secret forest blurring the boundary between indoor and outdoor spaces and activities. Furthermore, the roof top of this common building is also function as an elevated deck overlooking the lagoon pool with shading from the big tree that is hovering above the gym and being a focal point of the whole secret forest.

WISH II

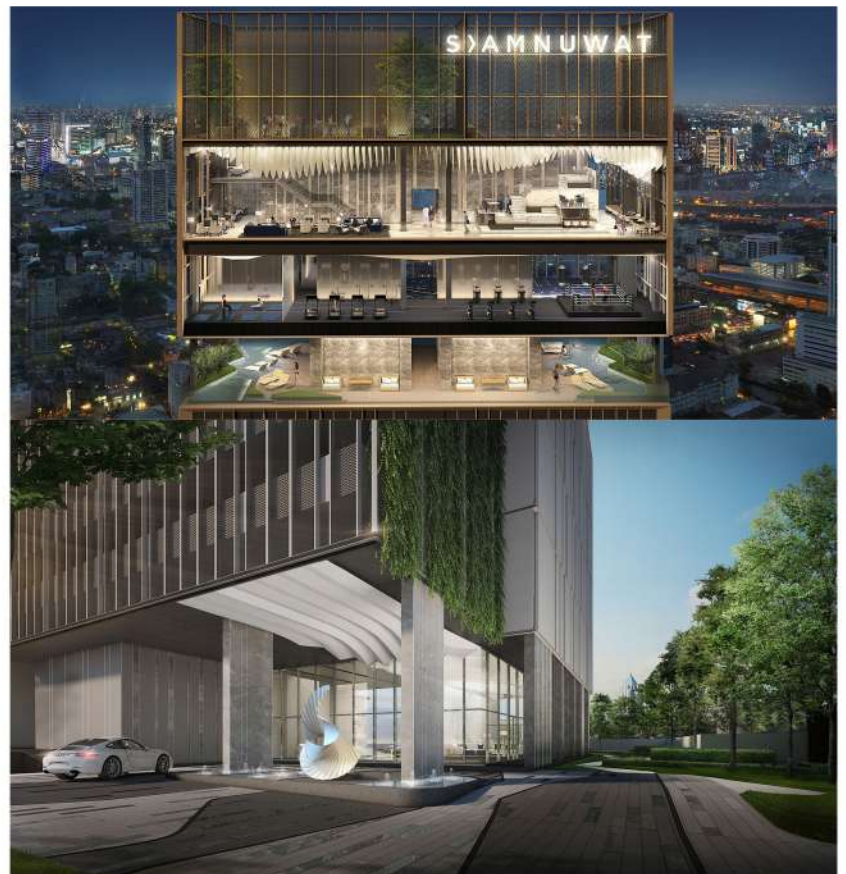
Year :
Location :
Use :
Design Architect :

2017
Phetchburi 20, Bangkok, Thailand
Highrise Condomenium
Somdoon Architects

Located in the heart of Bangkok business area, Wish Signature II is surrounded by renowned educational institutes, famous tutoring schools, major shopping areas and convenient public transportation hubs such as BTS Ratchathewi and BTS Siam and thus facilities with latest technology are provided in respond to the diverse activities of metropolitan lifestyle along the train lines.



GROUND FLOOR



CHAOPHRAYA RIVERSIDE HOTEL

Year : 2012
Location : Charoenkrung Road, Bangkok, Thailand
Use : HOTEL (THESIS PROJECT)
Design Architect : Sumet Kamolsiriwat



NORTHSIDE IS A GARDEN, USING TREES TO CONCEAL VISION FROM OUTSIDE AND MAKE THE MAIN ENTRANCE SEEMS SILVANLY.

DROP-OFF IS ON THE SECOND FLOOR, ACCESS BY CAR RAMPS IN FRONT OF THE MAIN ENTRANCE. PARKING ENTRANCE IS ON THE LEFT. BUS AND TEMPORARY PARKING IS ON THE RIGHT.

SOUTHSIDE IS A SERVICE AREA, ACCESS BY SERVICE WAY PART FROM MAIN ENTRANCE ALONG TO A RIVER. WHICH HAS SERVICE PARKING, LOADING PLATFORM FOR SERVICE FOOD AND FREIGHT CONSUMER GOODS IN-OUT.

ON THE RIVERSIDE ARE SWIMMING POOL AND LANDSCAPE BETWEEN RESTAURANTS, CAFE AND FUNCTION ROOMS.

LANDSCAPE IS DESIGNED BY USING RHYTHM OF WOOD, BRICK, PLANT AND WATER.

BOT

Bank of Thailand Learning and Recreation Center

Year : 2014
Location : Tha Kasem Road, Bangkok, Thailand
Use : Bank of Thailand Learning and Recreation Center
Design Architect : Somdoon Architects & Creative Crews



Somdoon Architects (SdA) was selected as the winner for Bank of Thailand's (BOT's) competition to restore its historic, money factory in Bangkok, Thailand. The project brief was to turn the significant and historic money factory into a museum with a new, learning center and recreational facilities. A key agenda is to attract visitors to interact with and understand more about BOT's role and duty, emphasizing its presence as the center of Thailand's economy. The site of this exciting new project is adjacent to the famous Rama VIII Bridge in the Bangkhunprom province, Bangkok. Its main elevation is directly in front of the Chao Praya River.

The existing money factory building has architectural significance as it is an example of modern buildings in Thailand. It is valuable to Thailand's history as it embodies the economic potential of Thailand's past. Respecting its original identity, SdA proposed to conserve particular parts of the existing building to maintain its historical value.

The significant structure, perfect grid columns and convex concrete roof which faces Chaopraya River was retained and preserved. On contrary, the existing exterior wall will be replaced with glazing to reveal the interior of the building to public and taking the light and direct view of the river into the heart of the existing building.

The additional programs and circulations were introduced into the building, envelope by transparent glass and expanded steel mesh, this new components will intervene with and on top of the existing structure highlight the notion where past meets the future, encourage the next generation of Bank of Thailand.

