



E L O D I E
M A F F R E

elodie.maffre@laposte.net

+33 658 033 908



HO-CHI-MINH-CITY RAILWAY STATION



Waiting area above the platforms



The building intertwines with the garden



For my graduation project, I decided to revisit the design and architecture of Ho-Chi-Minh-City Railway Station. The objective is to requalify an underused site by adapting it to a brand new Vietnamese railway system that offers high speed train connections and garden-like public spaces.



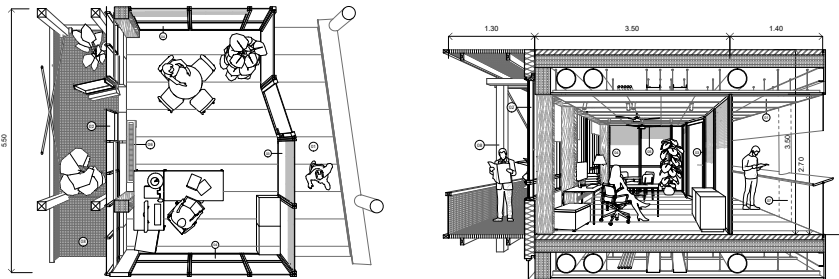


OPPIC OFFICES



Indoor view

Perspective plan and section of an office



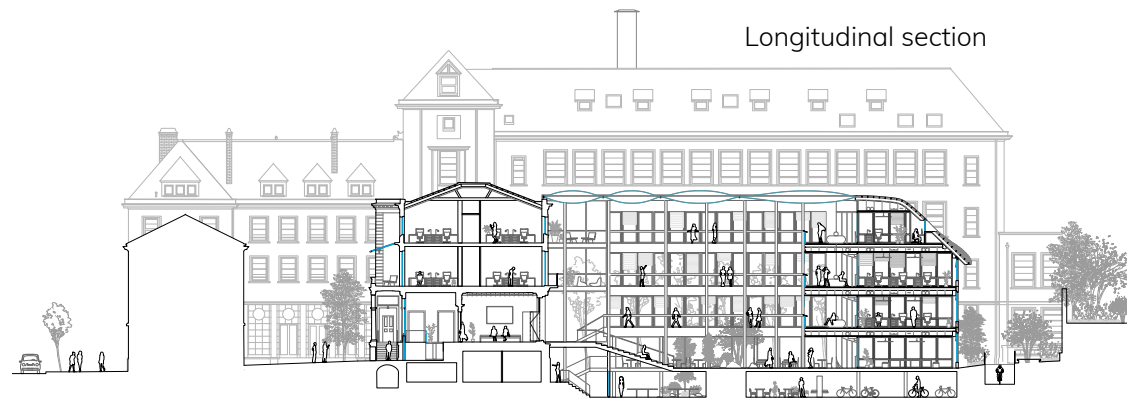
Within Mars Architects, I had the opportunity to work on the competition for the location of the future Oppic offices in Paris.

The challenge of this site is to integrate into the contemporary project a pavilion listed as an historical monument. This proposal connects to the existing pavilion using a large patio. The offices are fully modular and allow great flexibility. The garden on the ground floor blends peacefully with the building.



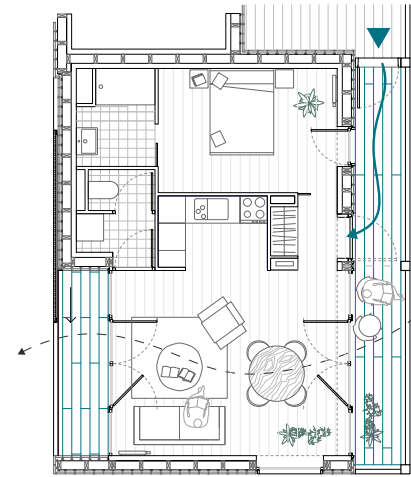
Outdoor view

Longitudinal section





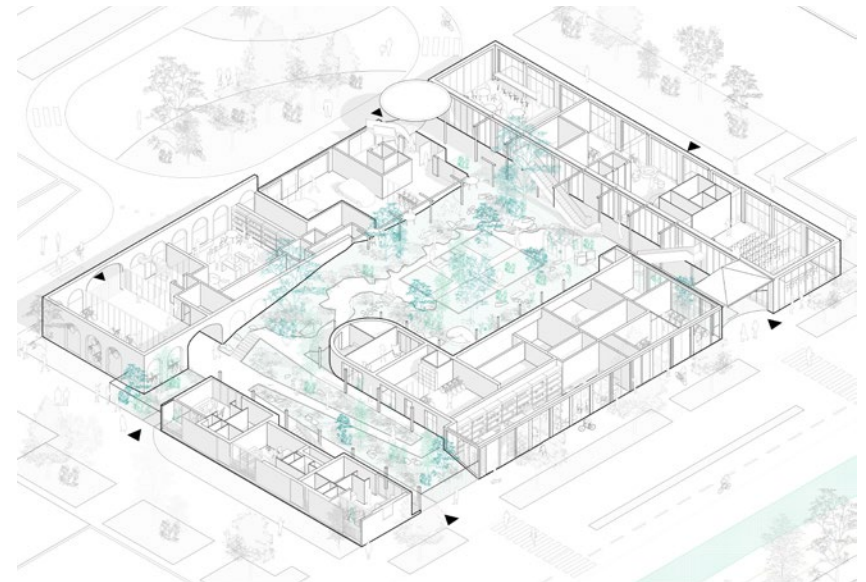
NANTES ISLAND



Housing typology plan

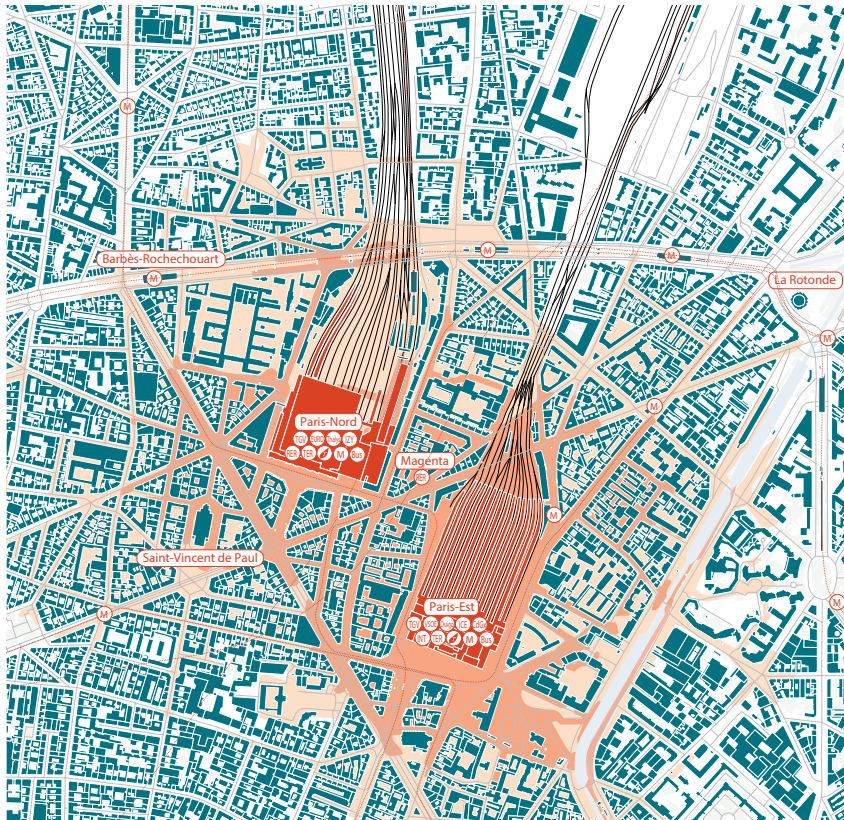
The J2 lot competition organized by the Urban and Creative Factory of Nantes Island (SAMOA) is located in La Prairie au Duc, in the heart of Nantes (FR). It is the result of work between NGE Immobilier and Mars Architectes. This project combines 133 housing units of different typologies, neighborhood shops, offices and parking lots. Its objectives are to stimulate new forms of sociability and links within the island. At the same time, it promotes nature in the city and soft mobility.

Axonometry of the ground floor



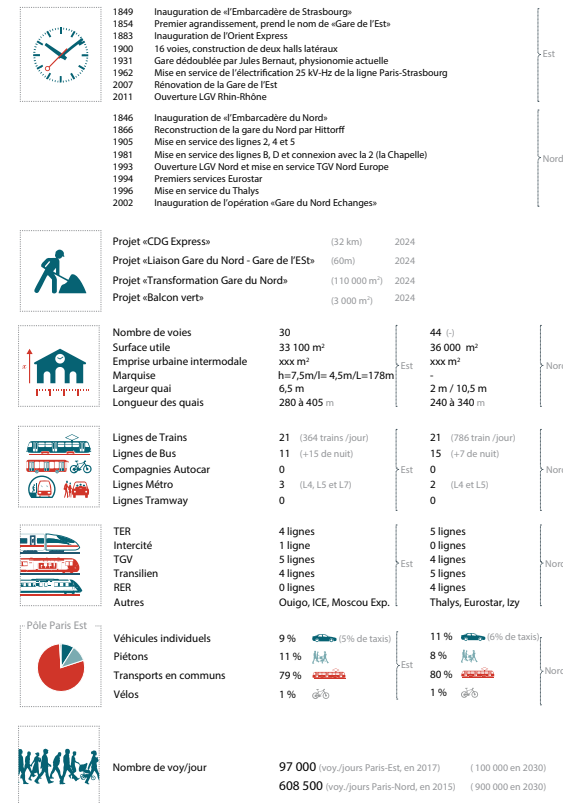


RAILWAY STATION COMPENDIUM

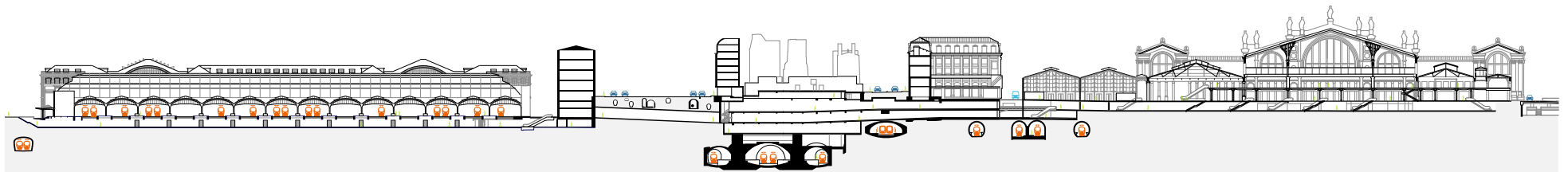


Gare de l'Est and Gare du Nord stations plans

In 2016 and 2017, the Research Unit of the Methods & Innovation Department and the Architecture and Urban Planning Department decided to publish a Railway Station Compendium for AREP Group project teams and employees. This document is a tool to analyse and compare transport hubs around the world. I had the opportunity to participate in the design of this Compendium by adding the Paris-Est Paris-Nord station hub and the Saint-Michel Notre-Dame station.

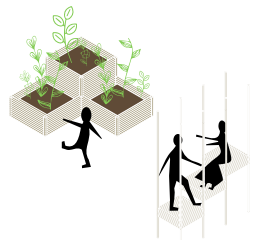


Gare de l'Est, Magenta and Gare du Nord longitudinal section





THE SHELTER



The shelter is a construction that is inspired by the site in which it is integrated; both in its insertion and in its composition.

This is why this project is designed in harmony with its context. Indeed, this architecture intertwines with nature. This exchange takes place through the disappearance of physical and psychological limits. The shelter, this magical place that we built in our youth, is reminiscent of childhood.

This construction is very playful, in its modularity, its human scale, its accessibility to the youngest and its different uses.



North-South section