



VIDURANGA BANDARA

INTERIOR DESIGNER

PORTFOLIO 2022

+94 (0) 71 296 4777

email: vidurangalakruwan@gmail.com

Completed with Credit Pass

Concept development, space planning, and technical drafting. Prepared and organized architectural drawings. Researched and proposed FF&E materials and products. Involved with the tender.

DRAUGHTSMANSHIP (CIVIL)

**C + DESIGN (PVT) LTD-COLOMBO
REVIT ARCHITECTURE-COLOMBO**

Completed with Merit Pass. Final project: Futuristic living apartment for a Tattoo artist.

**HND IN INTERIOR DESIGN-COLOMBO
ASSOCIATE MEMBER-SLIID**

Completed with 3.58 GPA
Research: Analysis of the efficiency of VR technology in architectural practice.

**MSC IN PROJECT MANAGEMENT
ASIA E UNIVERSITY-MALAYSIA**

2012

2013

2014

2015

2016

2017

2018

2019

2020

2021

2022

2023

**DIPLOMA IN IT
EDEXCEL**

**DIP IN INT. DESIGN-COLOMBO
ARCHT. DANYA UDUKUMBURA
COLOMBO, SRI LANKA**

Preparation of Mood boards, Furniture design, and discussion with stakeholders. Participated in the client meetings and connected with manufacturers at suitable times. Supported more senior architects on large-scale projects.

**ARCH INTERNATIONAL (PVT) LTD
COLOMBO, SRI LANKA**

Consulting and review specifications. Plan and develop design concepts. Coordinate construction document packages. Supervise progress, Lead concepts, planning, and development. 3D visuals and Develop design presentations.

**BA IN INTERIOR ARCHITECTURE
LIMKOKWING UNIVERSITY
MALAYSIA**

**GREY MATTERS (PVT)LTD
SINGAPORE, THAILAND**

Control and monitor the quality of works, materials, finishes, design coordination, and delivery on-site for "Grand Hyatt- Colombo, Sri Lanka". Propose design resolution suggestions to identify and clarify Interior design details. Review specifications, and technical information on overseas projects.



I

Page 04



ORIGIN

Location - Kuala Lumpur | Malaysia
Type of the Project - Retail Project
Achievement - The best Results for the Design Project of the Sem 03

II

Page 08



FOURTH DIMENSION

Location - Colombo | Sri Lanka
Type of the Project - Museum Project
Achievement - The best Results for the Design Project of the Sem 06

III

Page 12



SPACE BETWEEN BODY AND CLOTH

Location - Galle | Sri Lanka
Type of the Project - Local Transit Hub Project
Achievement - The best Results for the Design Project of the Sem 04

IV

Page 16



EATERY WITH A TWIST

Location - Mt. Lavinia | Sri Lanka
Type of the Project - Restaurant Project
Achievement - The best Results for the Design Project of the Sem 05

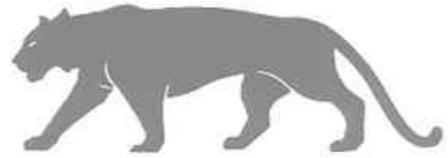
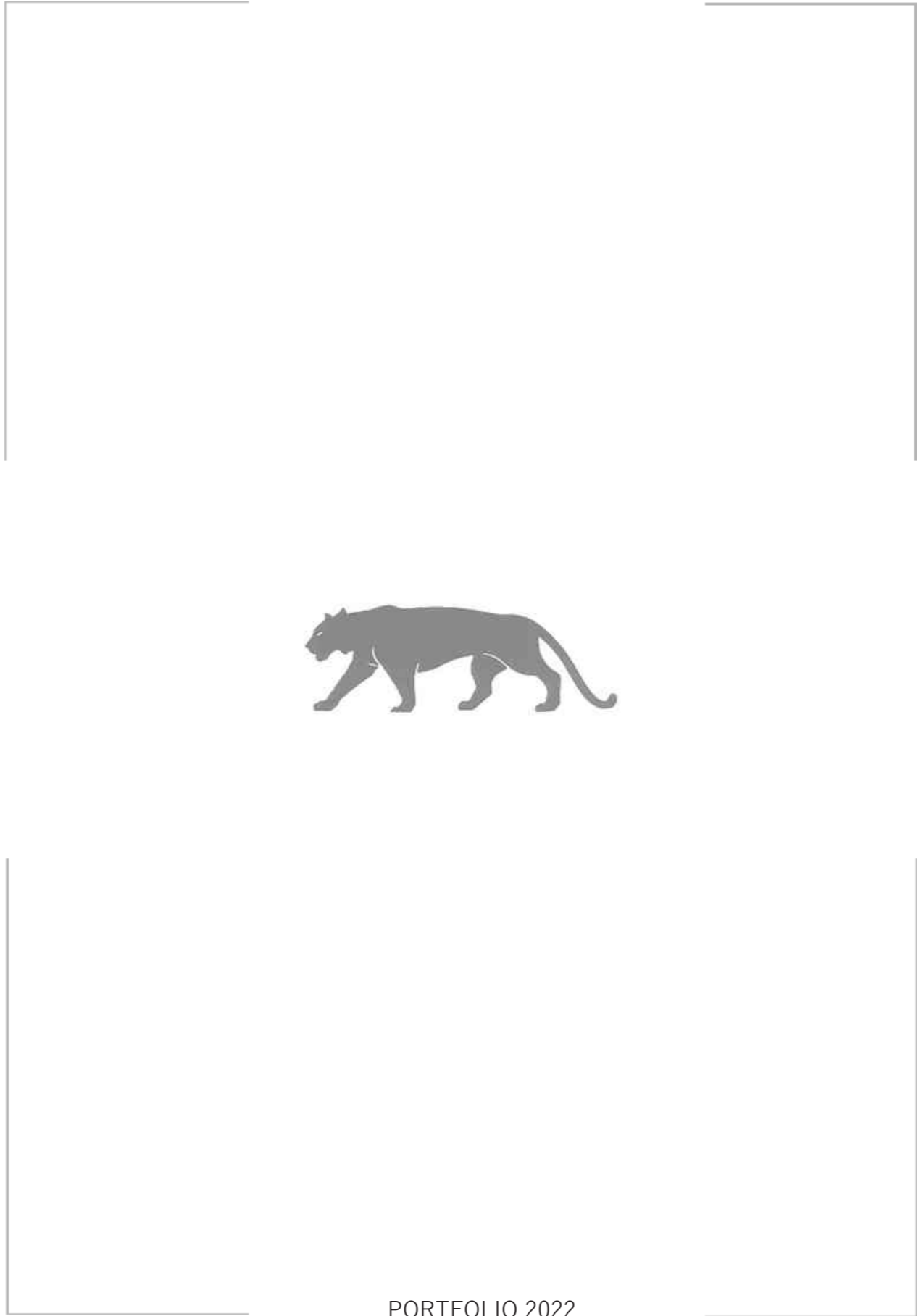
V

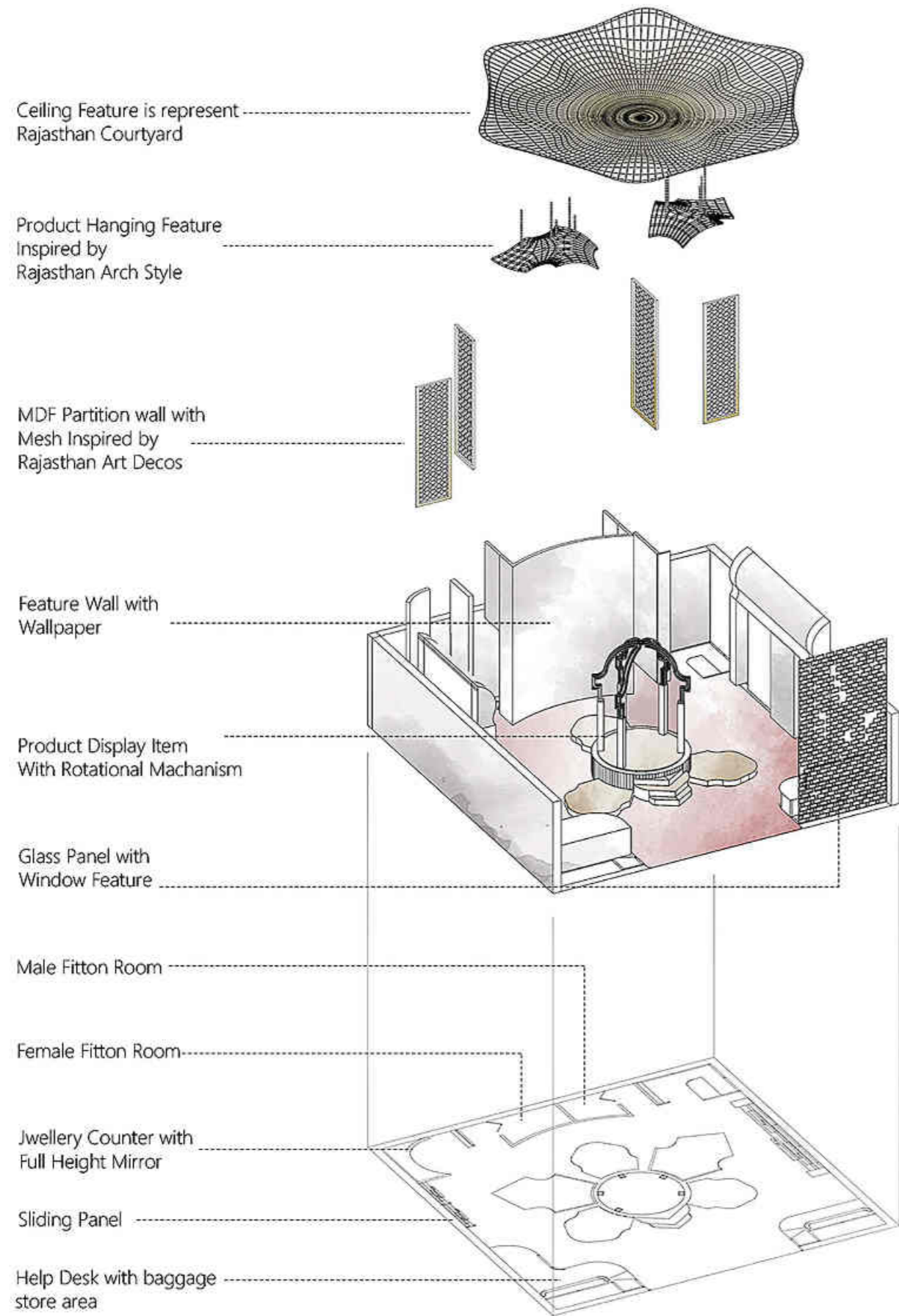
Page 20



OTHER SELECTED PROJECTS

Location - Sri Lanka
Type of the Project - Architectural Visualizations
Detail Drawings
Other Completed Projects





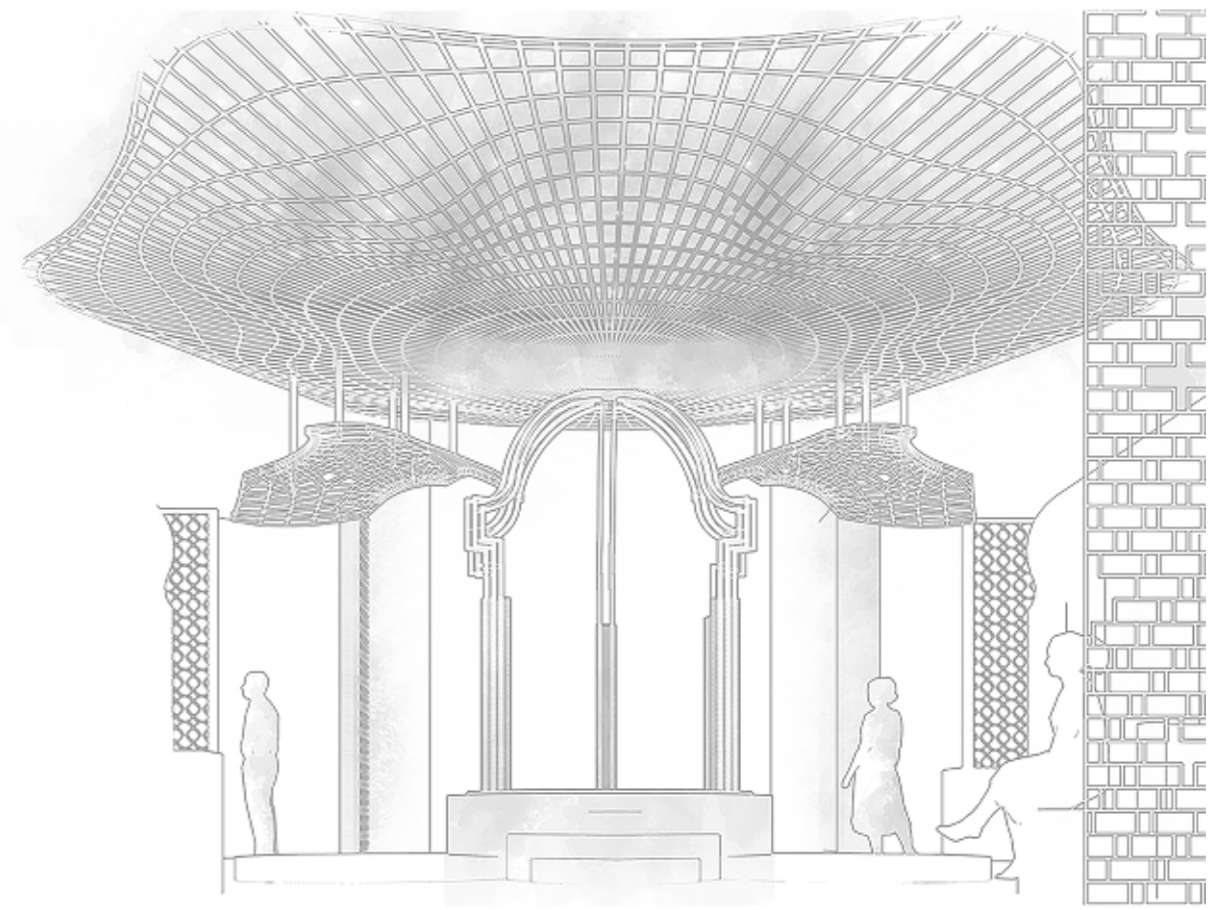
'ORIGIN'

SABYASACHI RETAIL SPACE AT KLIA AT MALAYSIA

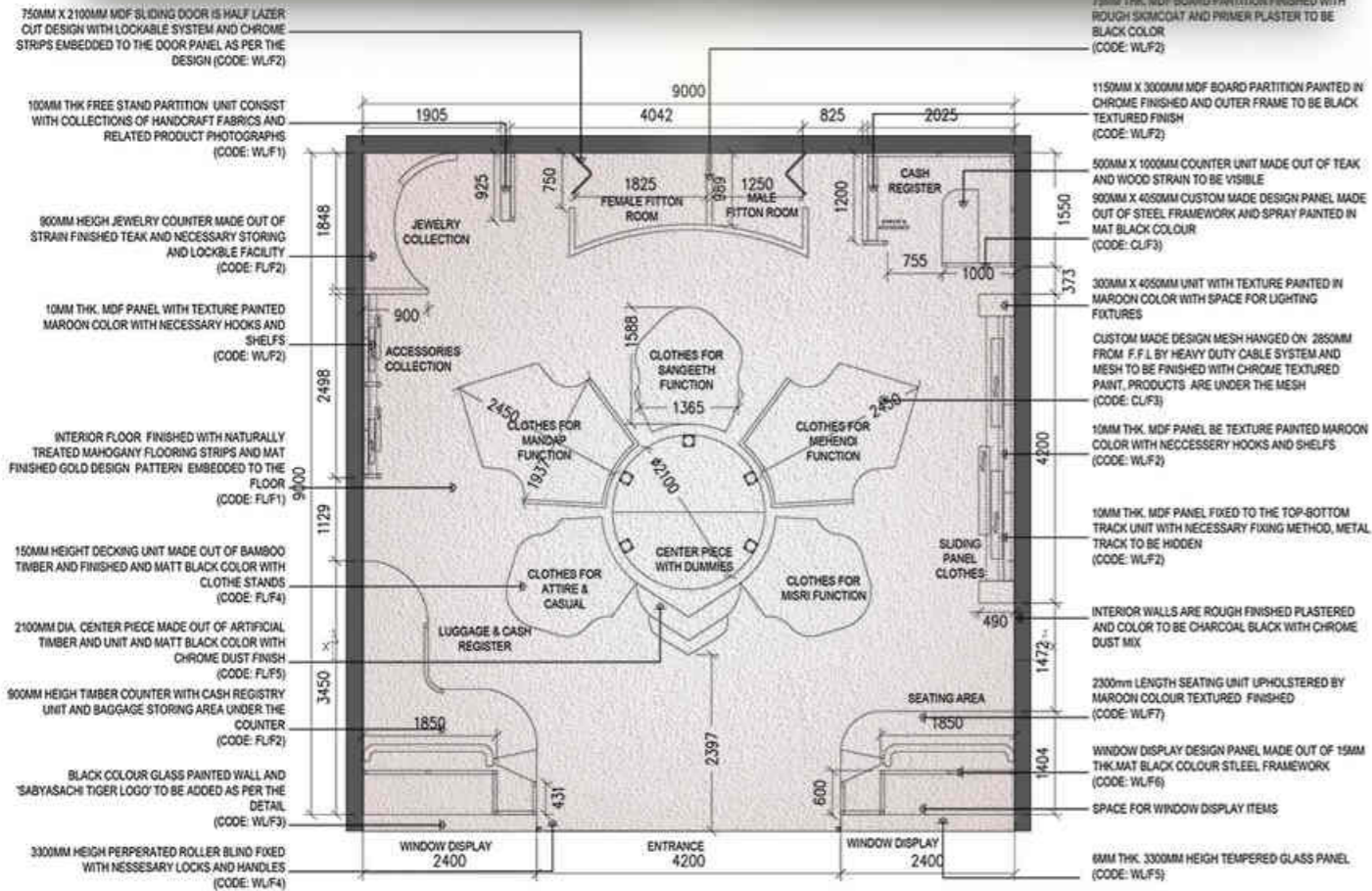
Sabyasachi fashion products are based on Indian culture and handicrafts. proposed KLIA retail space is delivering outstanding exceptional retail experiences to their customers. The design objective is to provide a remarkable retail experience for airport passengers through the Indian medieval culture. This retail space was inspired by Rajasthan architectural elements and its additional significance to enhance the Hedonistic lifestyle.

Sabyasachi fashion products are based on Indian culture and handicrafts. It provides an outstanding fashion experience as Circulatory Function. When considering the pragmatic function, this retail store is unique in Malaysia.

Also, this is the new Symbolic Function of Sabyasachi Mukerji invented for brides & Grooms. In this firmness, the entire interior is constructed in a heavy stone structure with lots of timber details and, much more. This also helps to symbolic functions this produces different moods to in every second because of its cultural identity & materials.



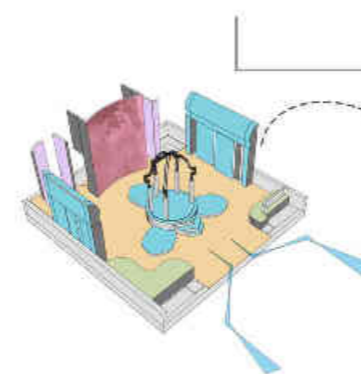
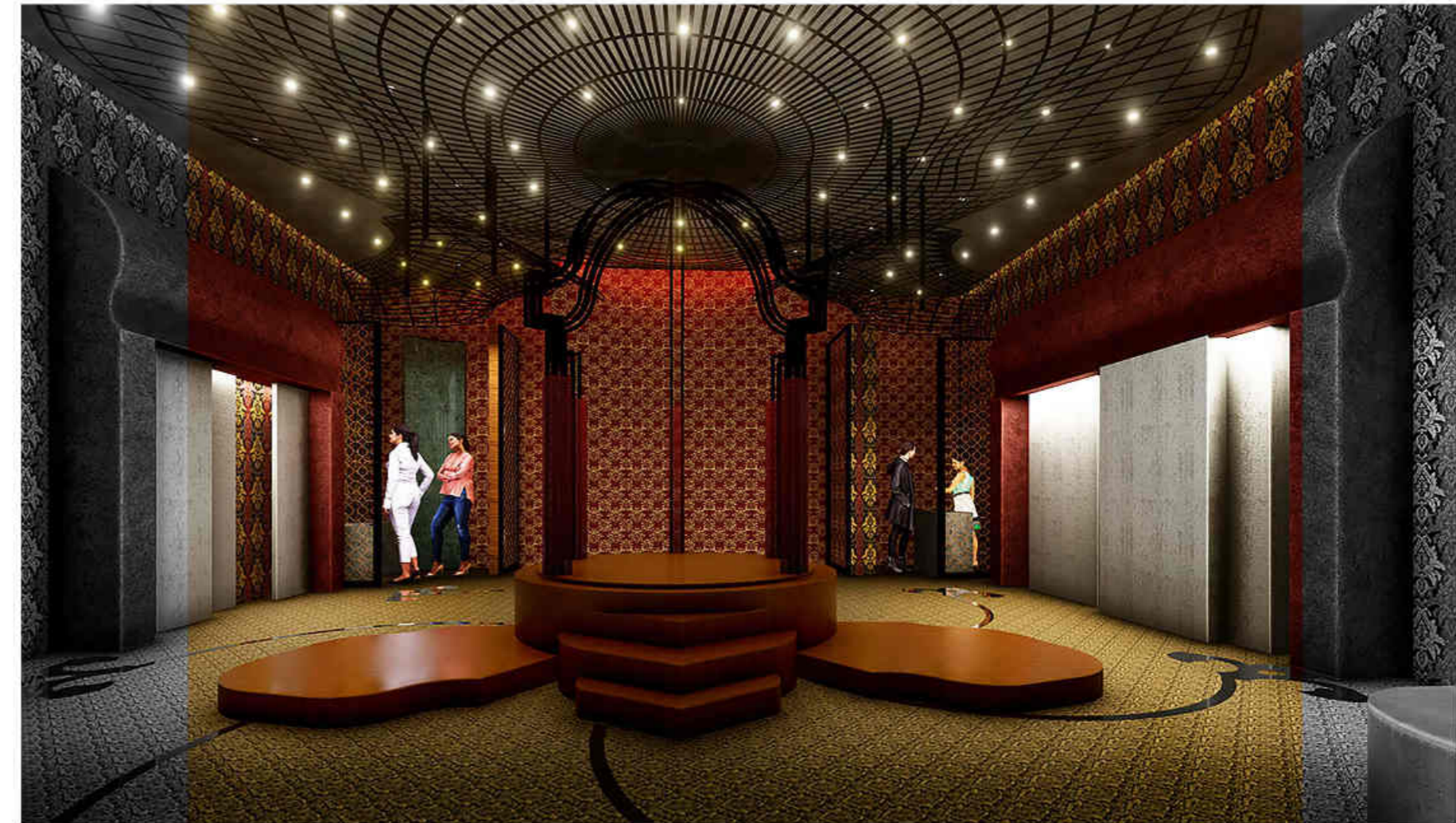
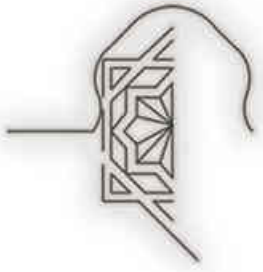
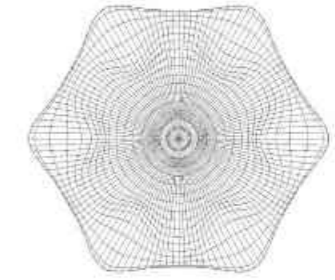
FRONT ELEVATION



CROSS SECTION

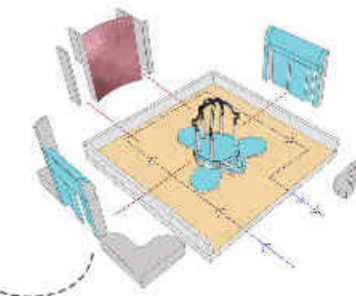


The main commodity of Sabyasachi is delivering exceptional retail experiences to its customers. Sabyasachi fashion products are based on Indian culture and handicrafts. It provides an outstanding fashion experience as Circulatory Function. When considering the pragmatic function, this retail story is the unique store in the KLI.A. Also, this is the new Symbolic Function of Sabyasachi Mukerji invented for brides & Grooms.



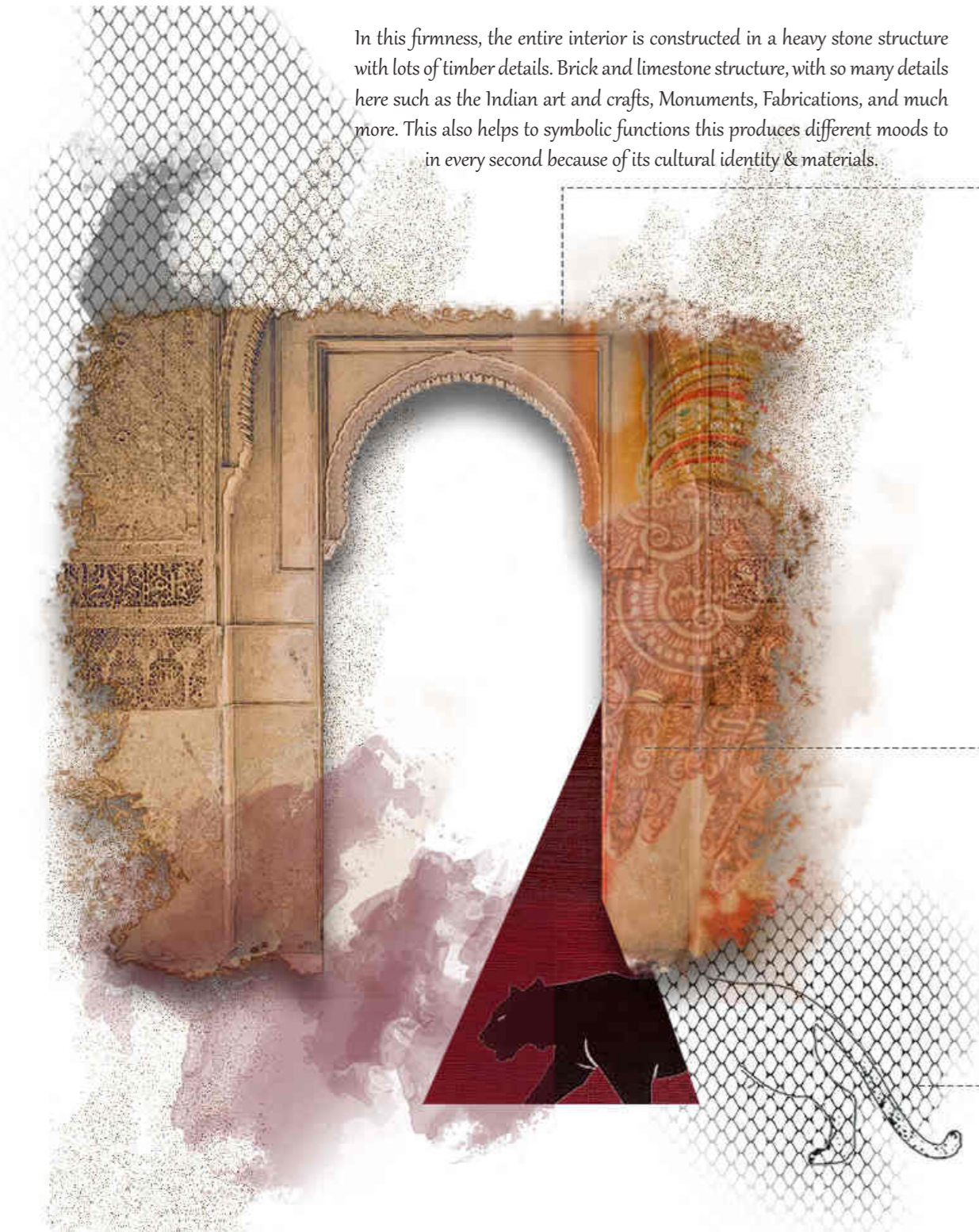
cloth hanging structure with lots of timber details.

outstanding fashion experience with Circulatory Function.



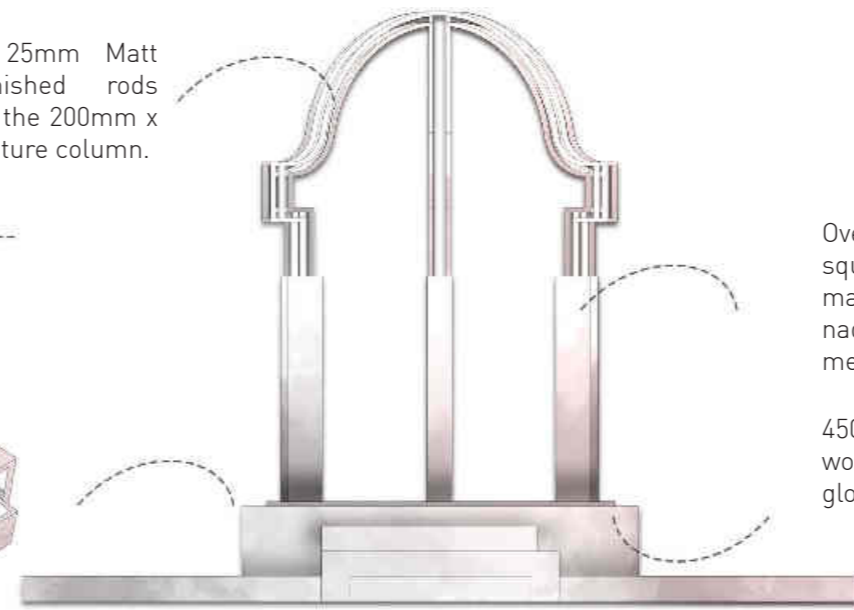
The architectural, as well as the Interior designs, have been developed through sustainable principles of light and ventilation. Use of Ecological materials and reusing materials for cash bills and bags. Low solar heat gain and passive cooling methods are environmentally friendly and will maintain a high standard even during the operation of the facility. Initial design implementation as such will help low operational costs as well as global green standards to be achieved.

In this firmness, the entire interior is constructed in a heavy stone structure with lots of timber details. Brick and limestone structure, with so many details here such as the Indian art and crafts, Monuments, Fabrications, and much more. This also helps to symbolic functions this produces different moods to in every second because of its cultural identity & materials.



Immoral Maharaja and their decadent lifestyles, the opulence of Clothing style, crafting, and color permutation of glorious palaces. Less was never more and more is never enough. Sabyasachi shows the Medieval Indian world how to romance luxury and deep. Art, Culture, and excellence succeeded as a way of fashion life.

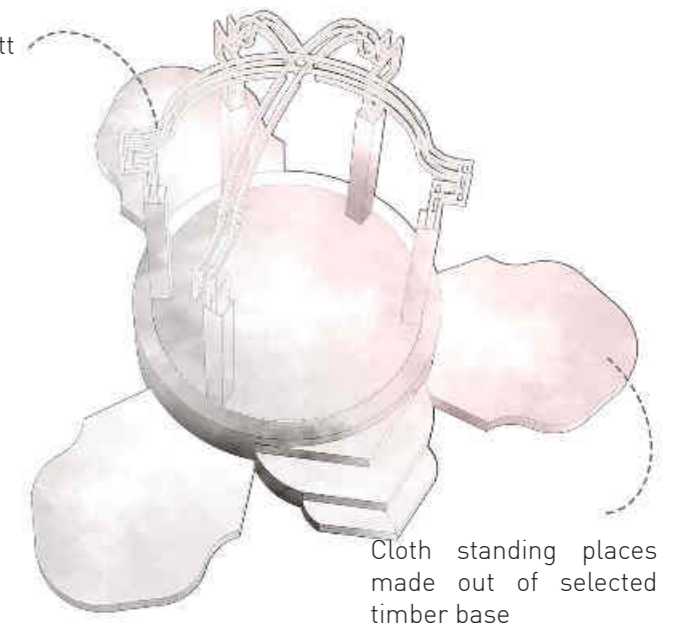
25mm x 25mm Matt black finished rods connect to the 200mm x 200mm feature column.



custome design matt black rods

Overall height 1800mm square type column made out of selected nadun wood with metallic rods inside.

450mm height Selected wood base with high gloss finished

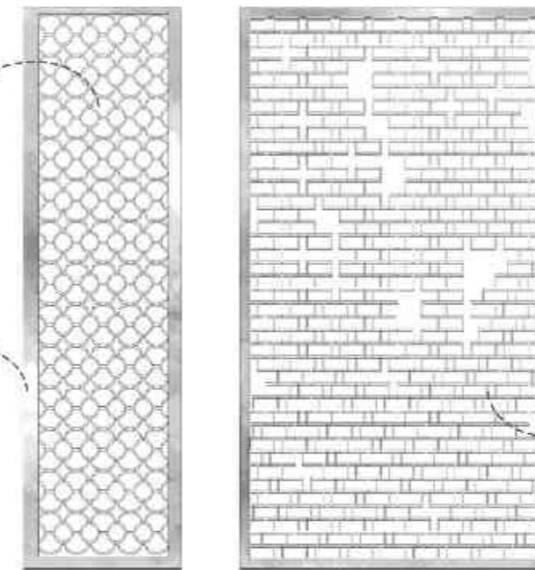


Cloth standing places made out of selected timber base

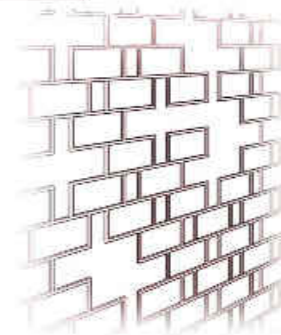
Storage space under the feature base



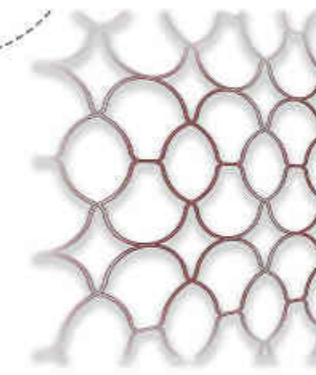
mesh design inspired by rahasthan artworks and patterns



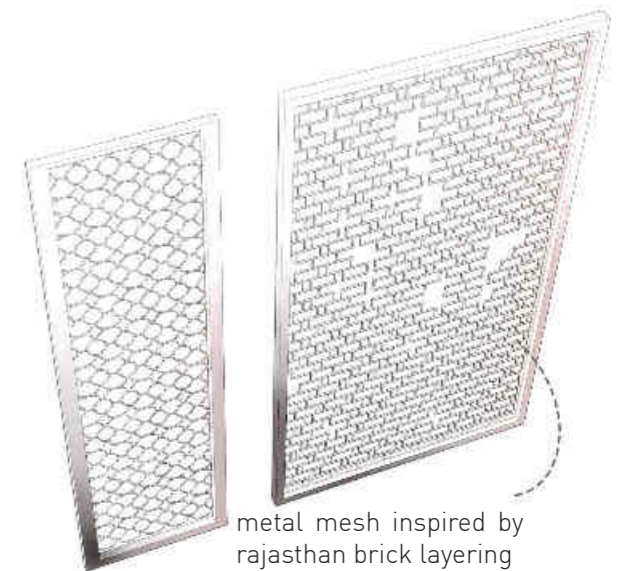
75mm x 100mm timber frame made out of selcted lightweight timber



Overall height 3600mm metal mesh inspired by rajasthan brick layering



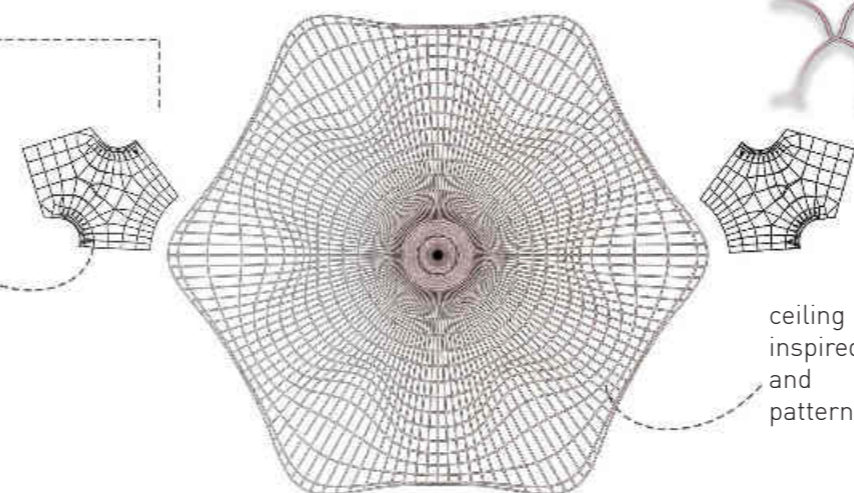
metal mesh inspired by rajasthan brick layering



custome design light ceiling feature

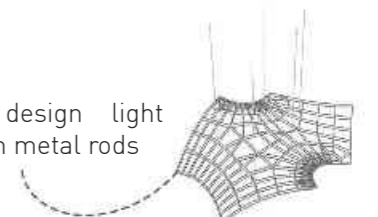


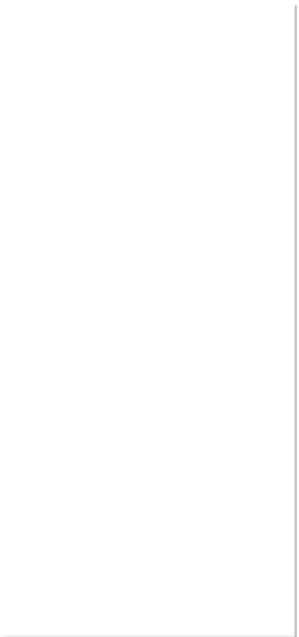
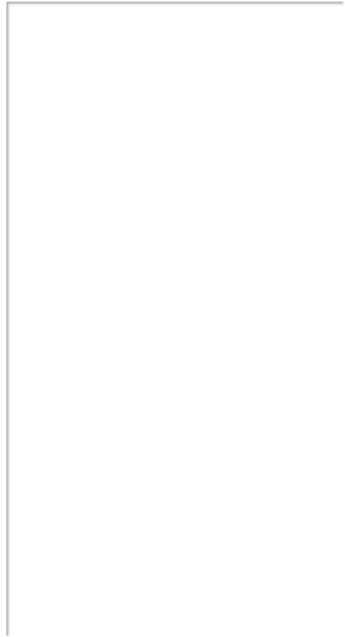
custome design metal mesh with 10 diameter

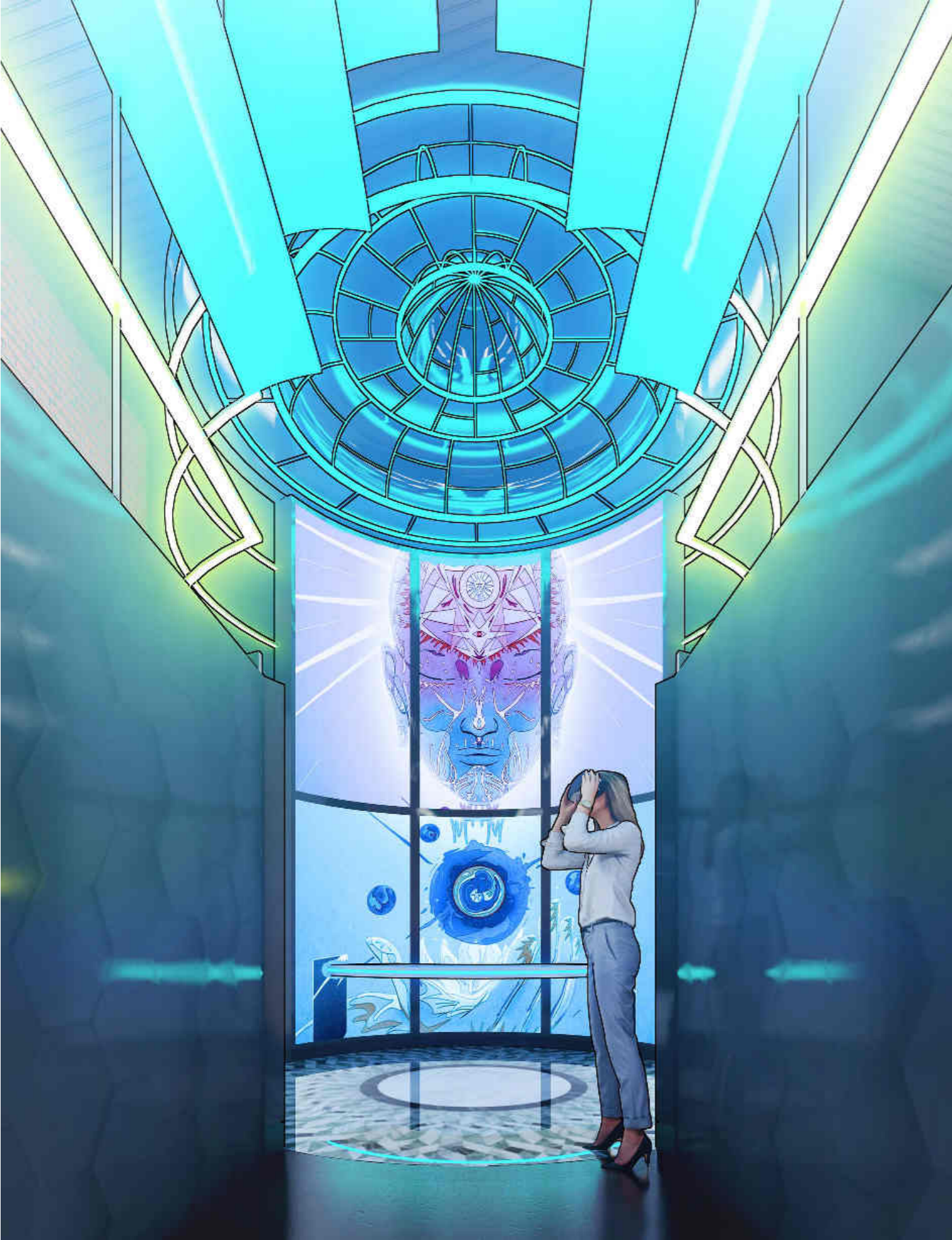


ceiling framework inspired by courtyards and indian kolam patterns

custome design light fitting with metal rods



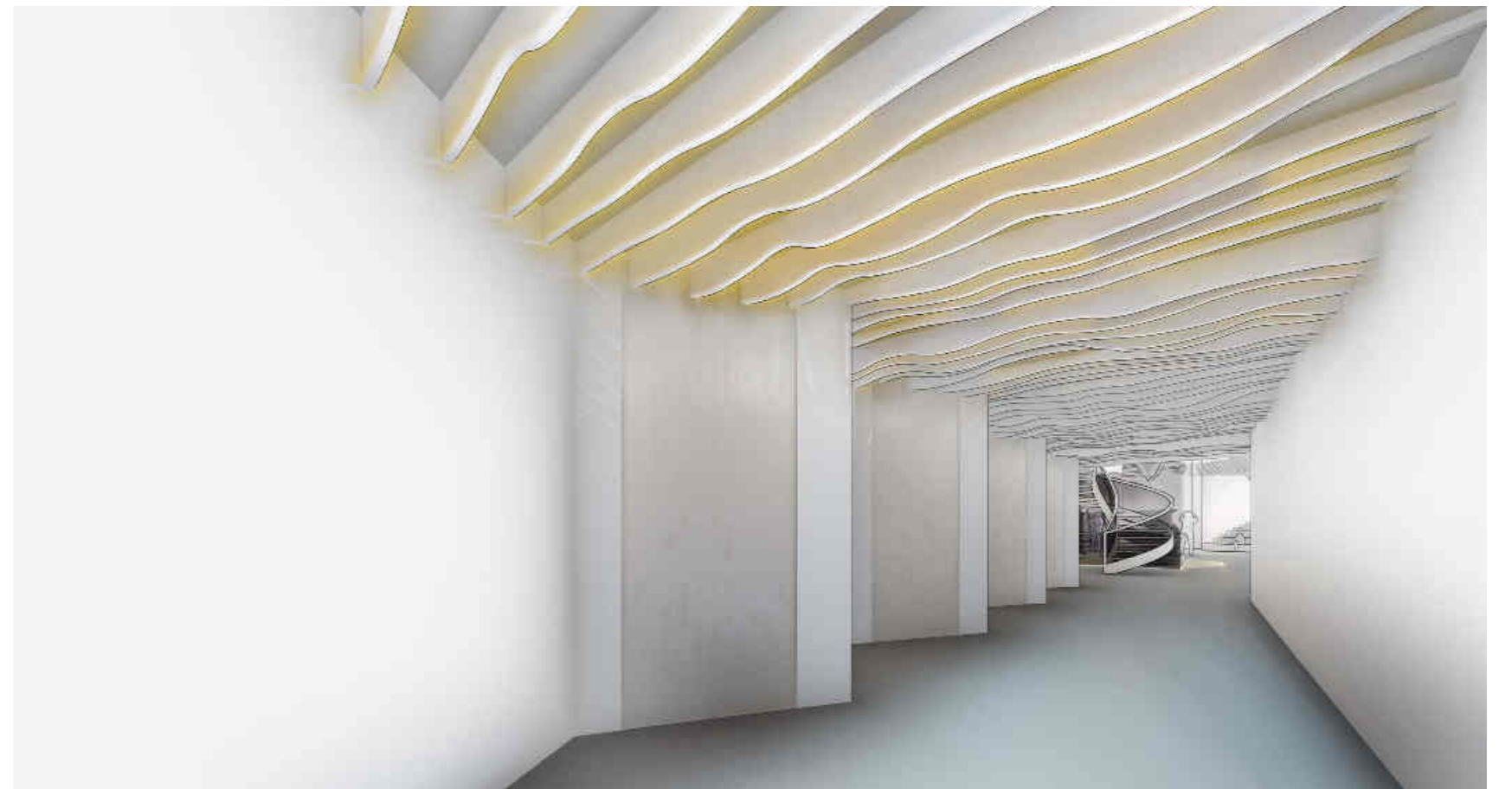
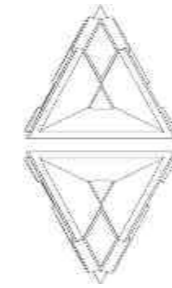


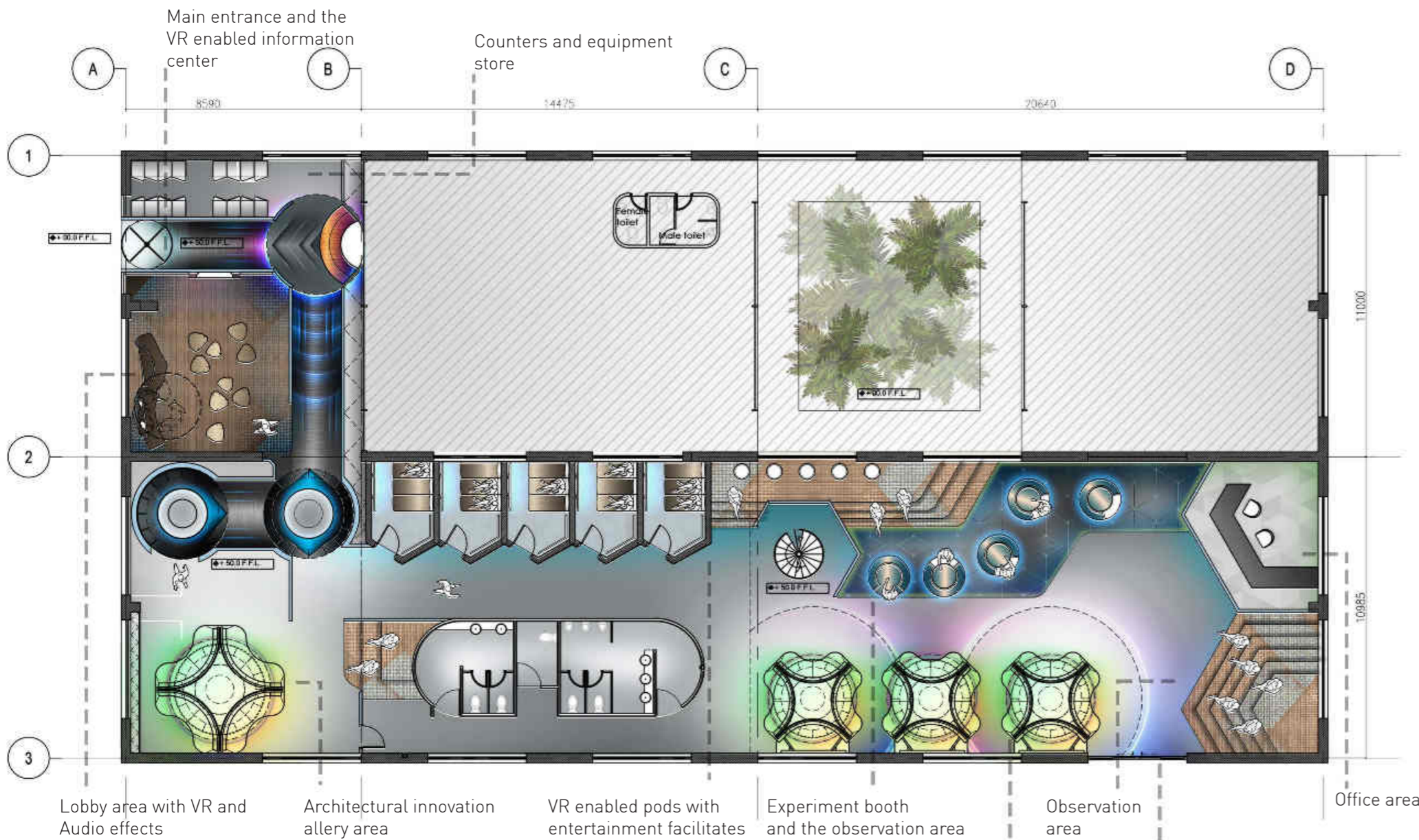


'FOURTH DIMENSION' CONTEMPORARY MUSEUM - SRI LANKA

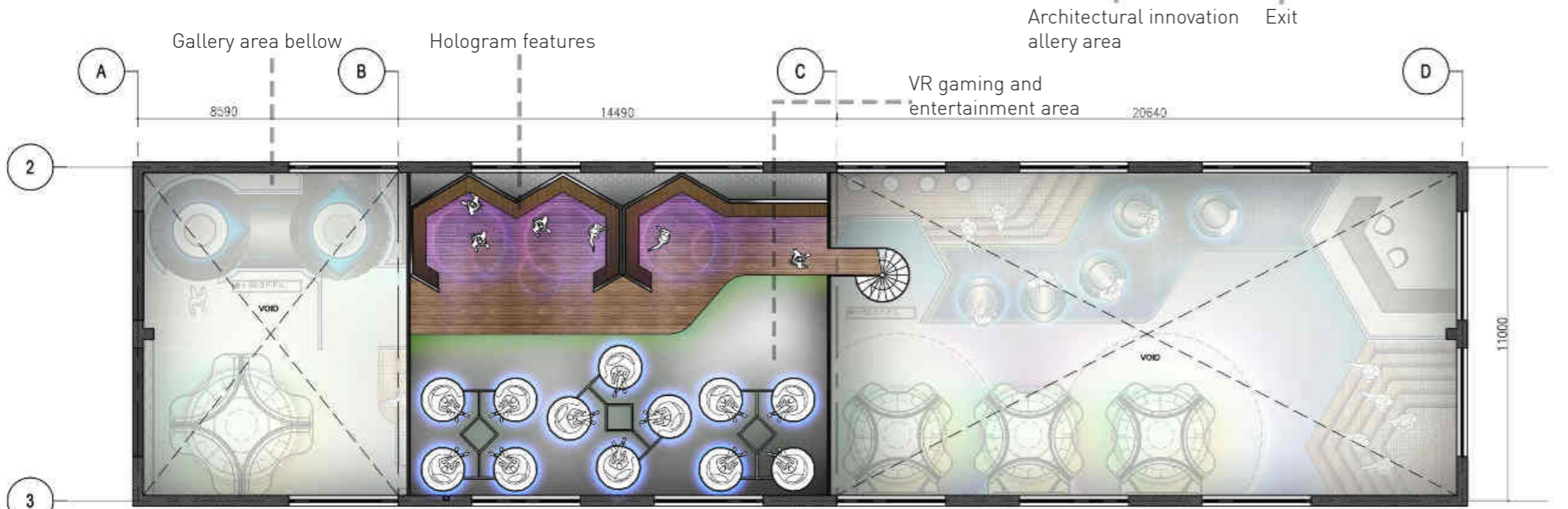
The world is entering a new era of accelerated knowledge and great technological revolutions. Technology can innovate the future lifestyle of individuals and contribute to problems facing humanity. Architecture will play a key role there merging with technology and human attitudes in the mainstream of society. The contemporary museum gives a glimpse into the future life of urbanites and aims to demonstrate how technology will innovate society.

This contemporary innovative museum helps people link with innovative architecture. Because of less awareness of new building design technology, the different levels of user confidence and fewer resources directly matter to the field of architecture. Ultimately, this innovative museum will help to develop design thinking among the Sri Lankan architectural industry to move with the modern global construction industry.





Lobby area with VR and Audio effects Architectural innovation allery area VR enabled pods with entertainment facilitates Experiment booth and the observation area Observation area Office area

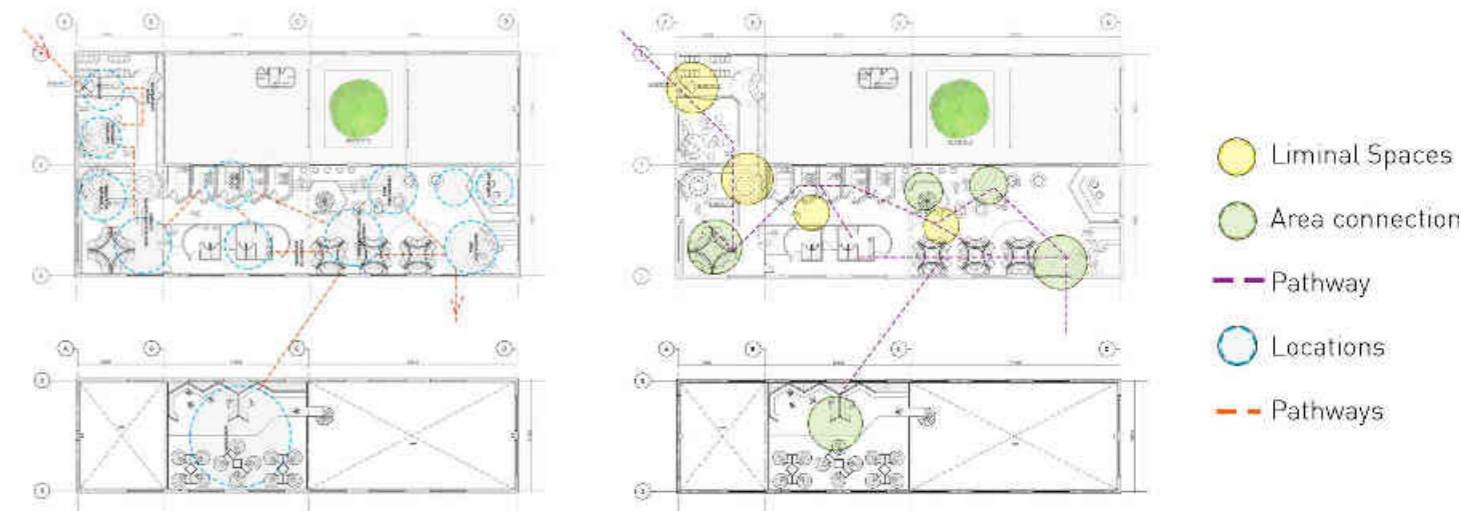


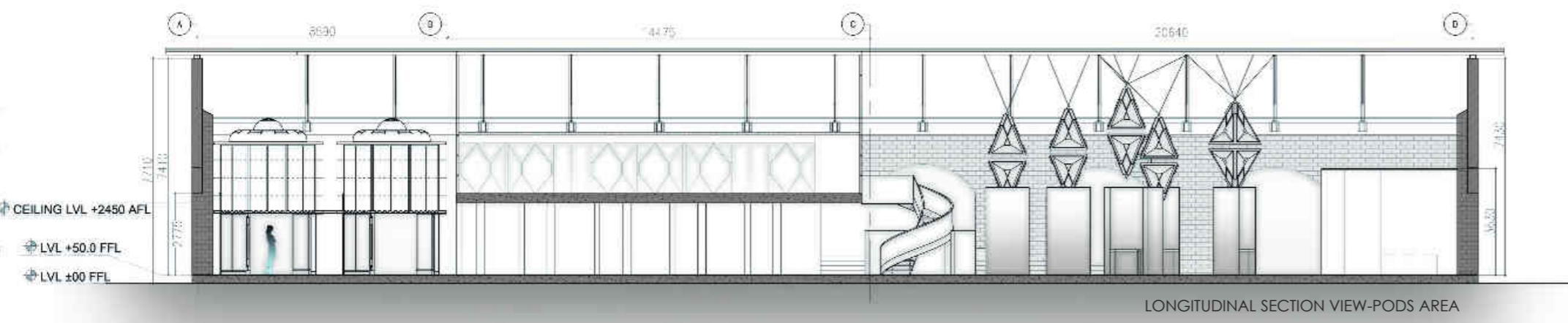
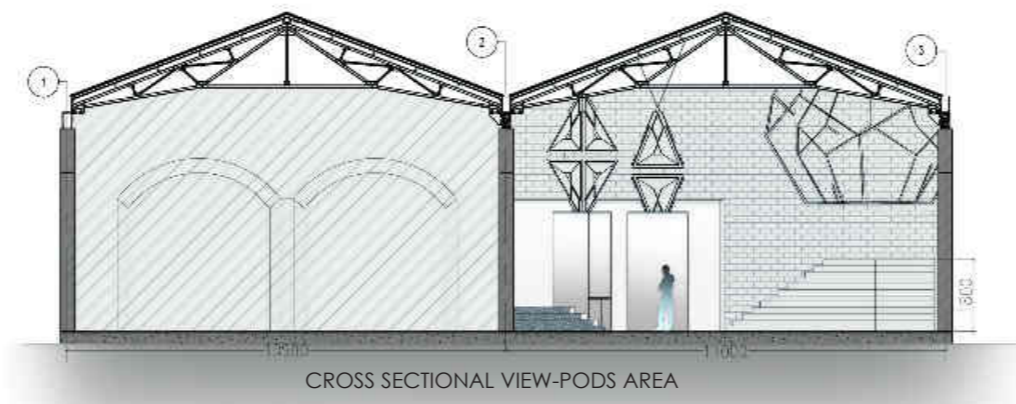
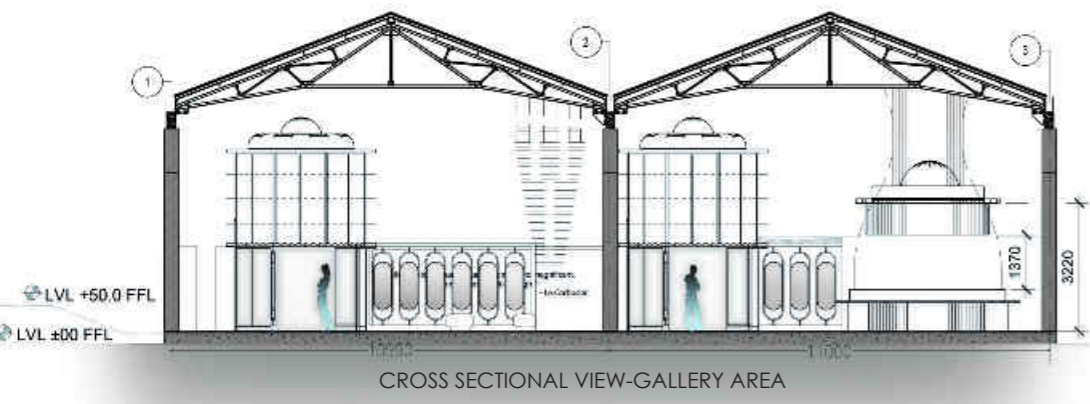
Gallery area bellow Hologram features VR gaming and entertainment area Exit allery area

I tried to capture his incorporeal world drawn in my mind into visible creation, merged with looming technologies, experiments, nature, and minimalism into one.

The architectural concept approaches to signify a new era of technology and Architecture. Therefore, virtual reality is the most suitable visualizing way to familiarize the architecture and futuristic technology through entertainment.

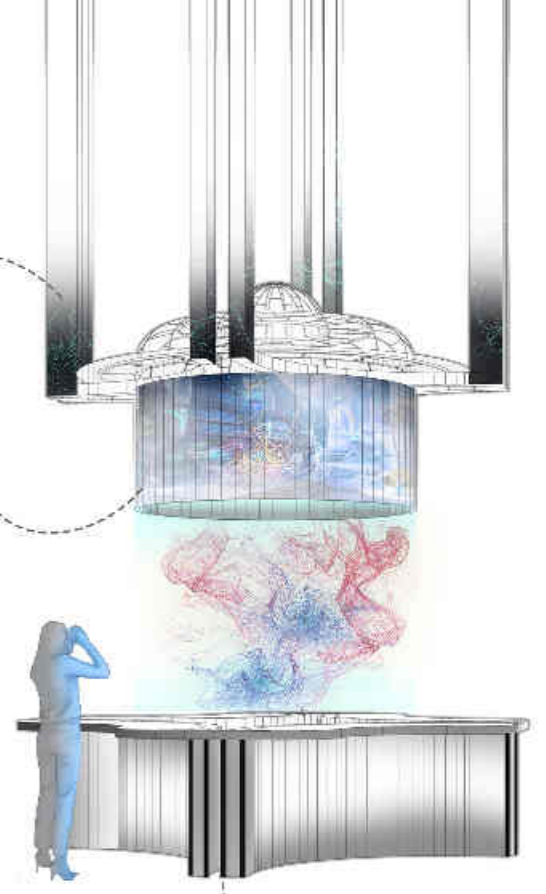
The concept "LIMINAL" enlightening through the entertainment represent a time between the 'what present' and the 'what next.' Also, it is inspired by the abstract form of Data nodes and Connection paths.





100mmx150mm gloss powder coated metallic structure with cable management inside

900mm height Curved video display unit with sensor system



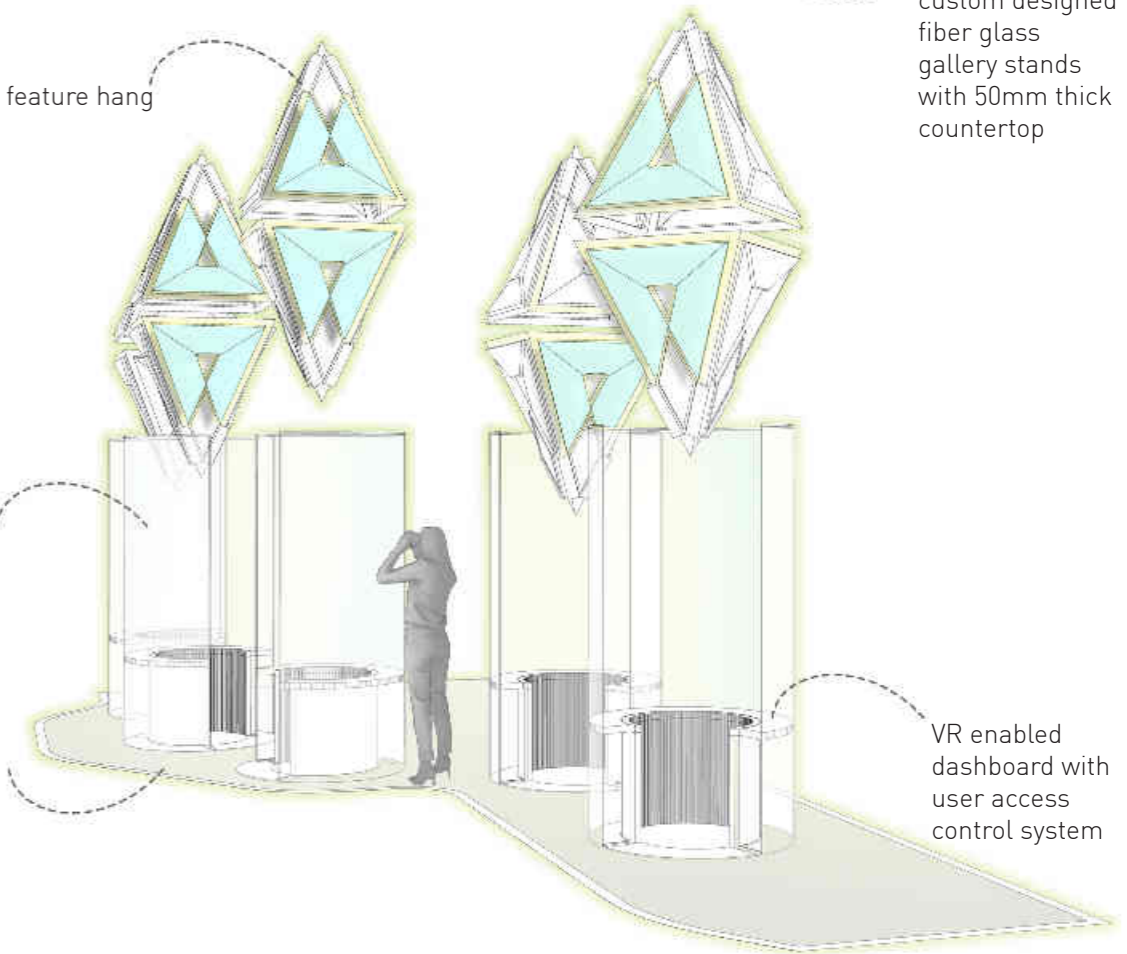
900mm height custom designed fiber glass gallery stands with 50mm thick countertop

VR enables video and feature hang to the existing ceiling

2000mm height 5mm thick curve glass cubical and switchable color effect

Necessary cable management and electric field carpet

VR enabled dashboard with user access control system





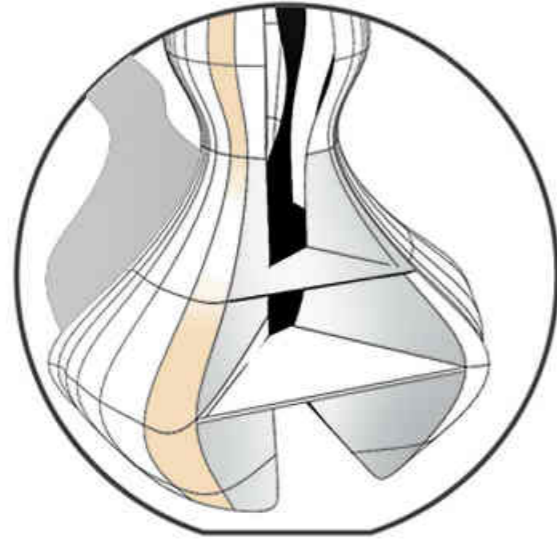


'SPACE BETWEEN BODY AND CLOTH' RETAIL SPACE AT THE DUTCH HOSPITAL BUILDING GALLE

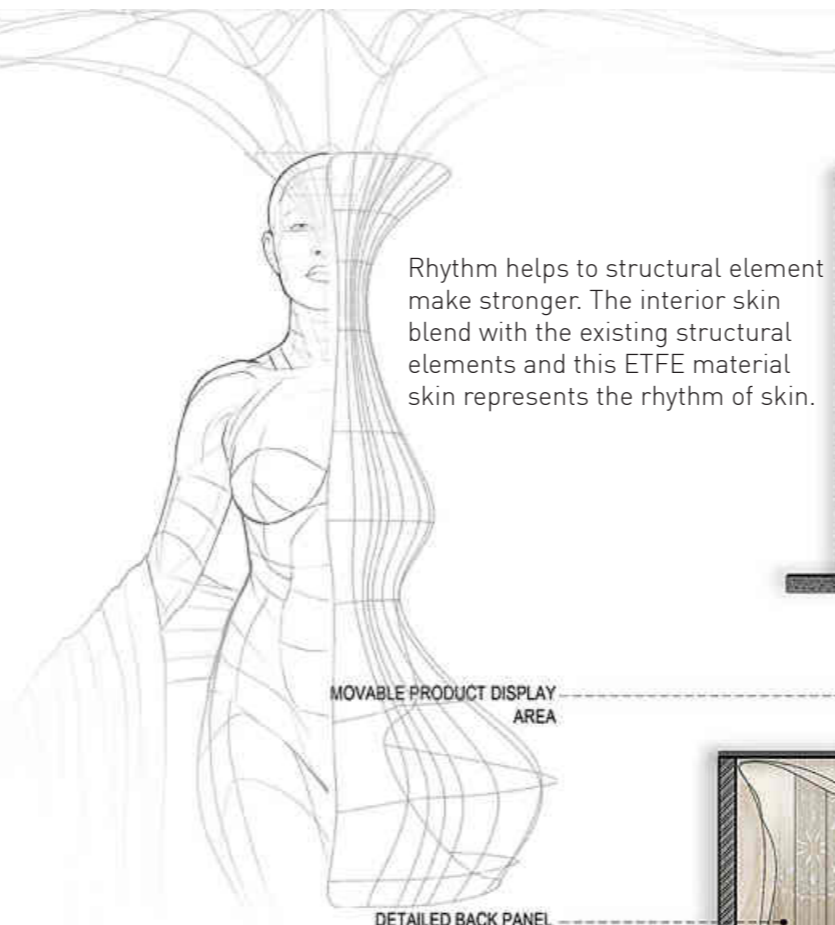
SALU HANDLOOM is delivering extraordinary retail experiences to its customers. SALU products are based on Sri Lankan Culture and its 100% handmade. It affords outstanding fashion experience in the entire modern architecture. This retail space is inspired by the human dynamic poses. The concept is based on the space, human body, and clothes.

Conceptually Consumers can see the blend of the dynamic pose respond to the clothes through the architectural elements. In this Organic interior walls, elements and furniture has been constructed by using reinforced glass fiber material.





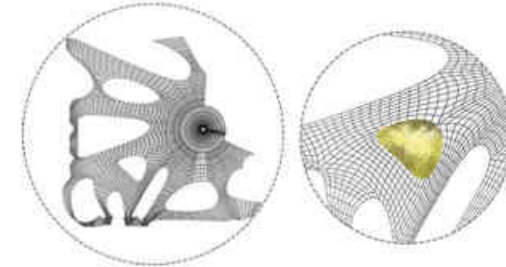
FEATURE AND FOCUL POINT



Rhythm helps to structural element make stronger. The interior skin blend with the existing structural elements and this ETFE material skin represents the rhythm of skin.



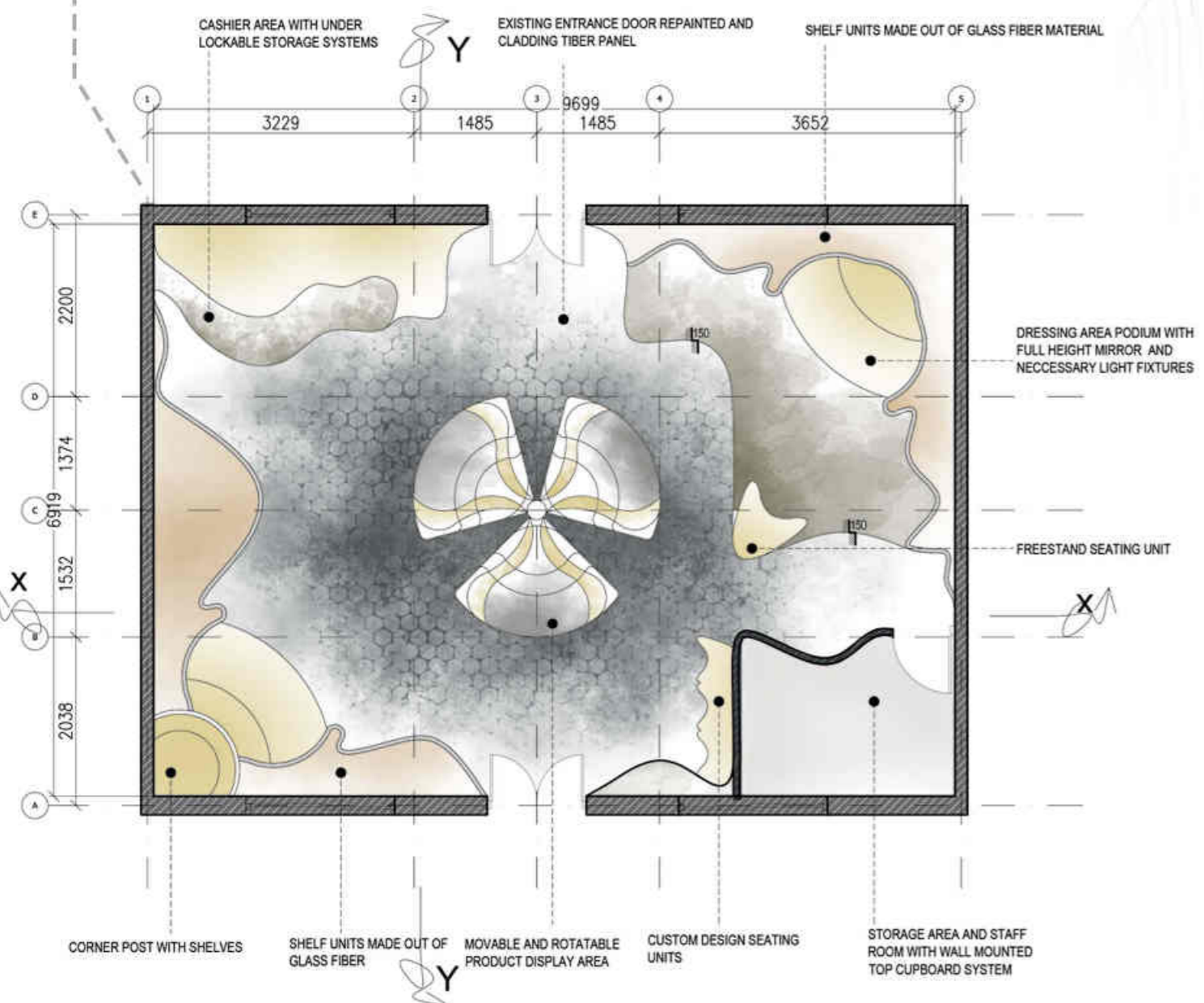
SECTION Y-Y



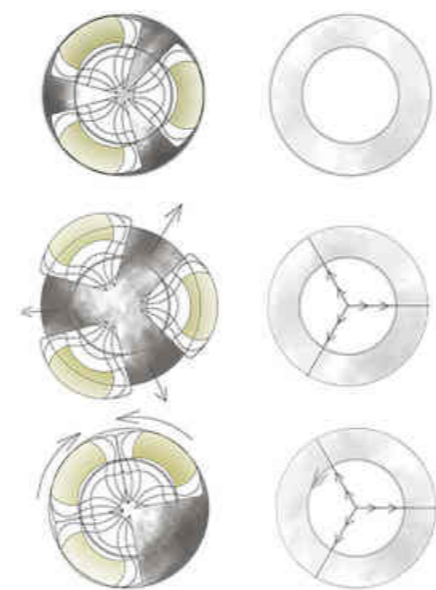
CEILING MADE OUT OF ETFE WITH LED LIGHT SYSTEM



SECTION X-X



DETAILED BACK PANEL

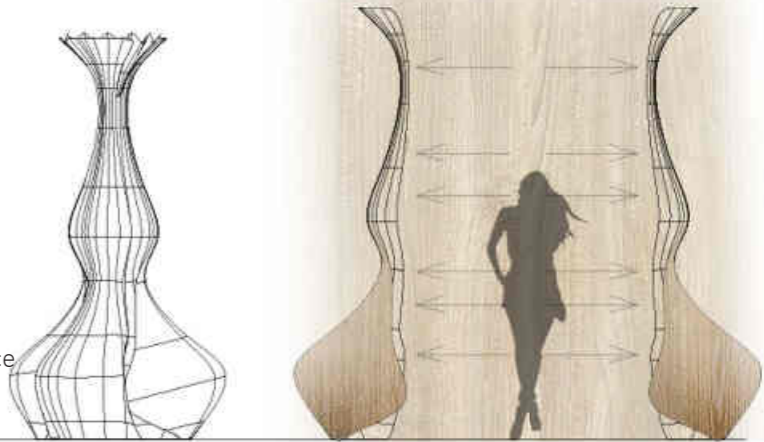


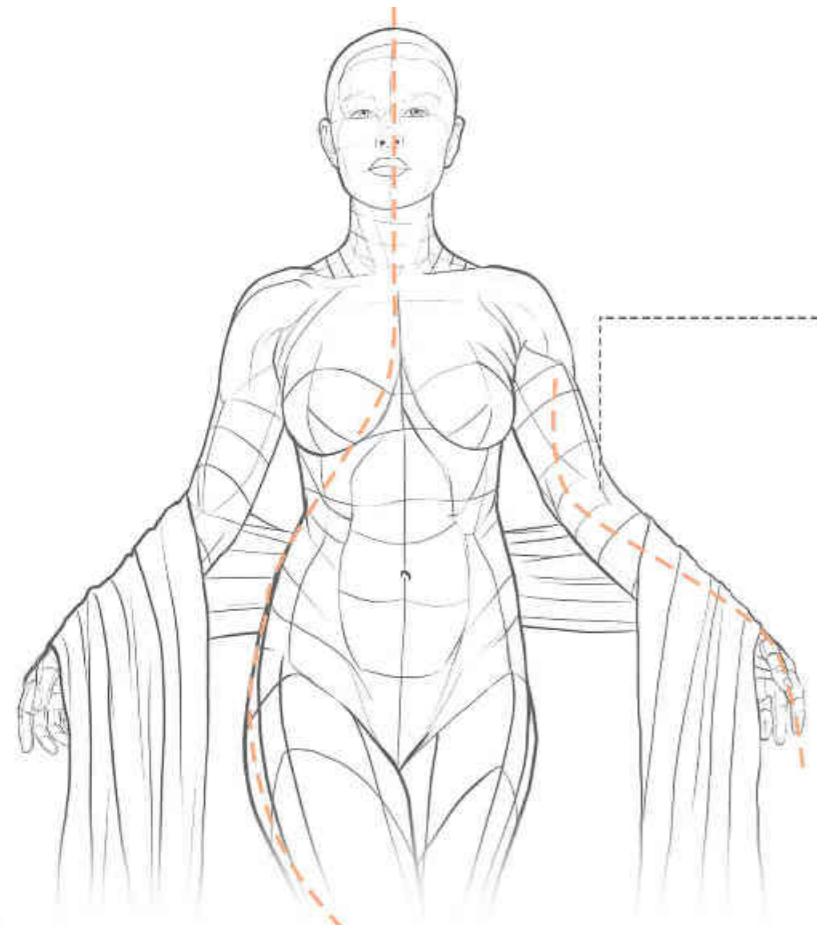
PLAN VIEW OF THE DISPLAY UNIT

Standing position of the feature column. The column is made out of glass fiber material on the metallic track.

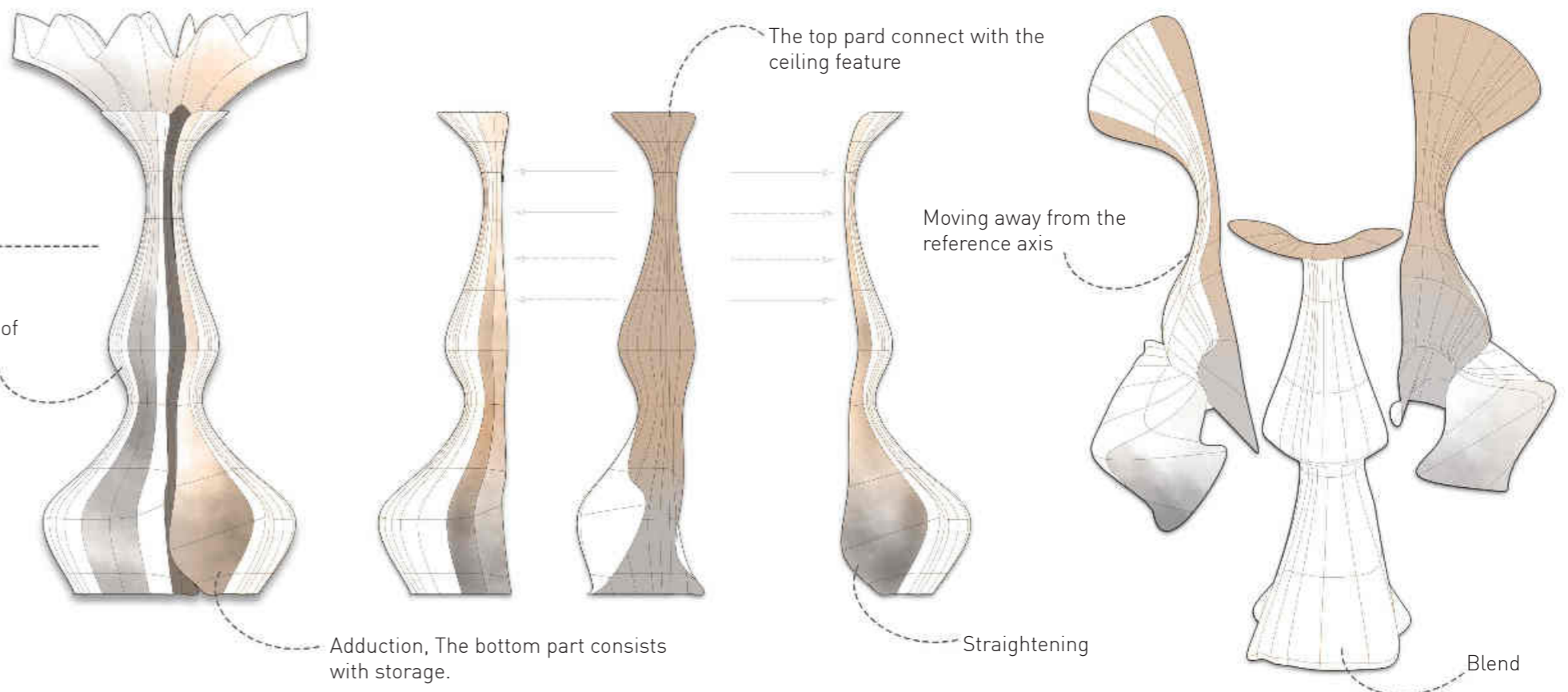
The position represents moving away from the center axis. 900mm length 600mm width shelves are adjustable and made out of aluminum perforated mesh.

The rotational mood gives extra effect to the interior and makes an outstanding experience for the customer.





The feature cloth rack made out of carbon fiber with selected finish
Adjustable shelves are inside

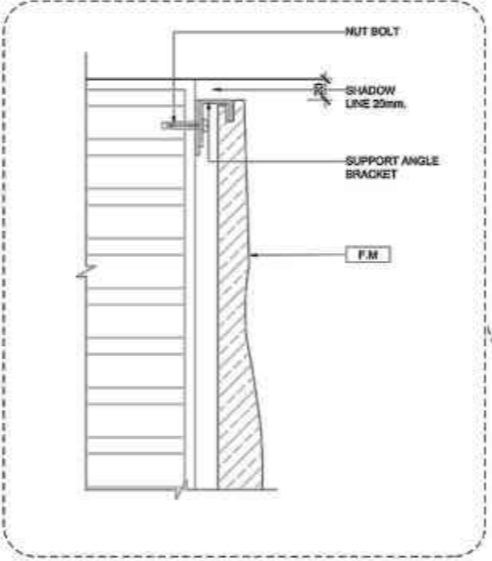
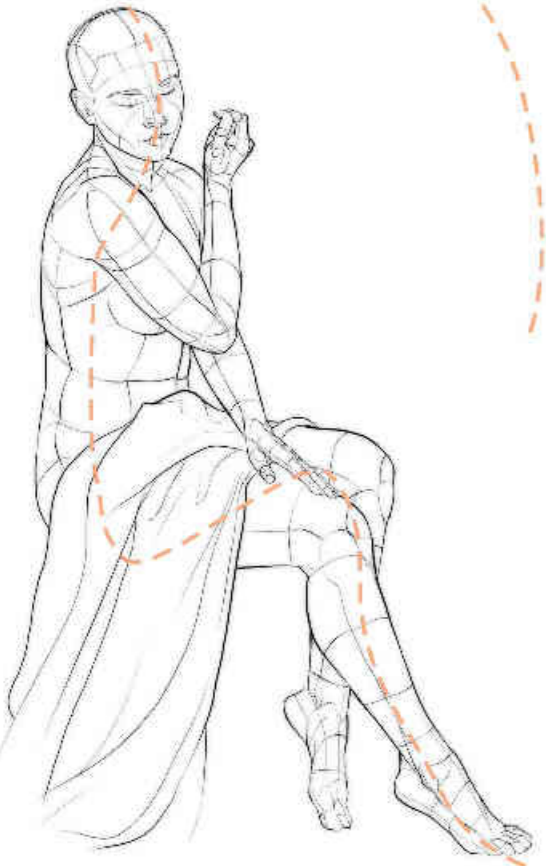


Adduction, The bottom part consists with storage.

Moving away from the reference axis

Straightening

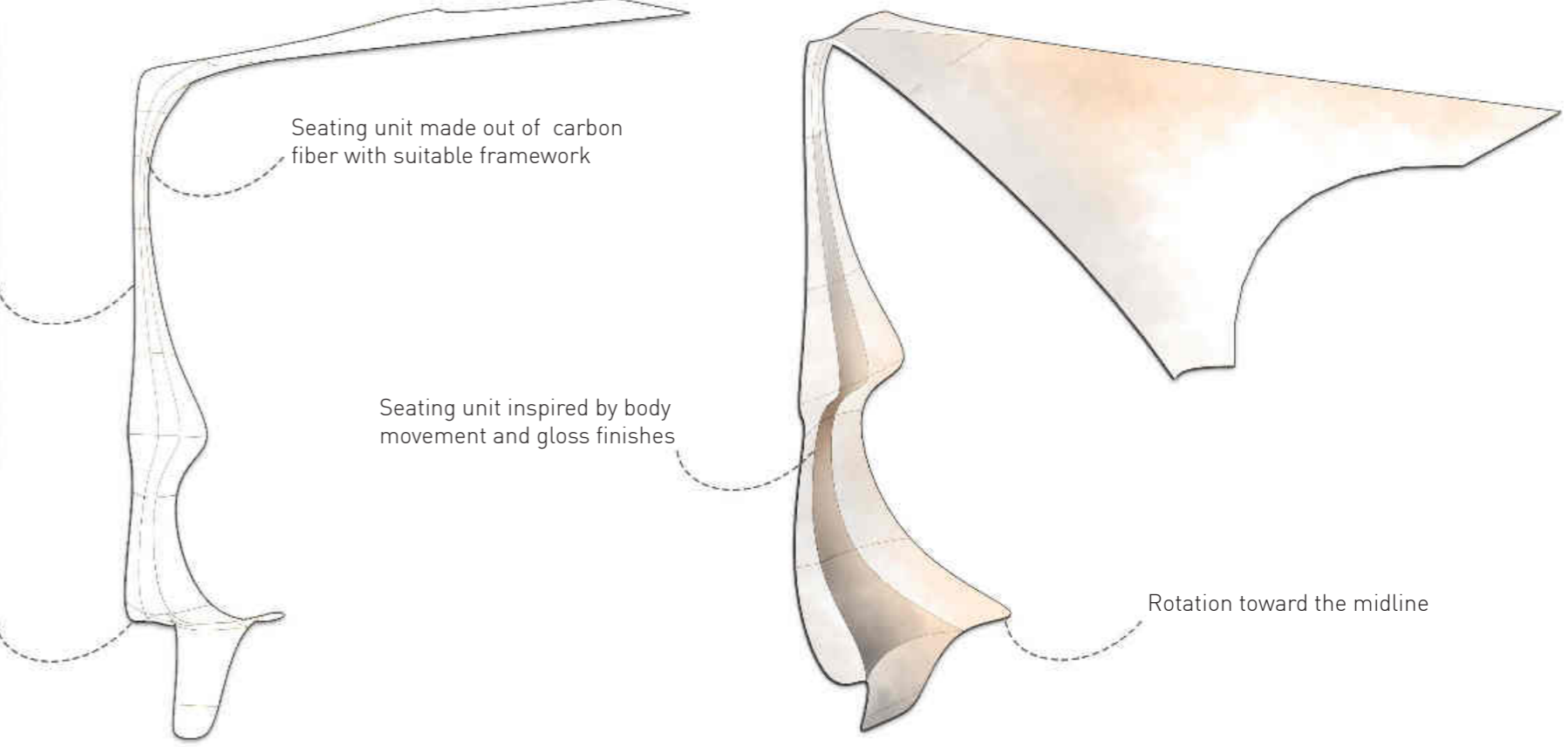
Blend



the retail space style will be "contemporary" and building elements may represent the type of human body language in organic forms

Seating unit made out of carbon fiber with suitable framework

Seating unit inspired by body movement and gloss finishes



Rotation toward the midline





'EATERY WITH A TWIST' BEACHSIDE RESTAURANT AT MOUNT LAVINIA | SRI LANKA.

A restaurant is an appropriate place to get to know a certain culture, especially when it comes to Chinese culture, in that food is transmitted through all senses it evokes images of taste, sight, smell, sound, and touch tantalizes the full range of human senses. Chinese Restaurants are an important part of Chinese traditional culture.

The new LOON TAO restaurant delivers the modern Chinese restaurant space planning not only inherits the essence of Chinese elements but also absorbs the advantages of Western design ideas. Neo-Chinese restaurant interior design represents a new trend to the Mount Lavinia beach context. in Sri Lanka.



The Sequences of -SPACE RELATIONSHIPS Edges, Nodes, and Terminations of the Path have been prominent here. Organizing element for a series of spaces on both sides helps to function smoothly and more people can accommodate one time because of circulation. It helps economically.

The Public areas make use of the natural lighting to the maximum with the help of skylights and large voids. A combination of Natural and artificial lighting is used in the open dining area and pathways to optimize energy demand.

Furniture arrangement on different levels helps to maintain cross ventilation and more sustainable design implementations.



Low lighting can be relaxed and romantic, and it encourages customers to stay longer. Dinnertime is the most popular time to go out to eat since customers can sit back and relax after their day. strip lights wash the feature wall and focus the interior elements.



Highlight the featuring element helps to engage consumers in the restaurant. The china town vibe and the music give an extra livable feeling.



private and staff area to back of house

wider space for public attraction and connect with the beach

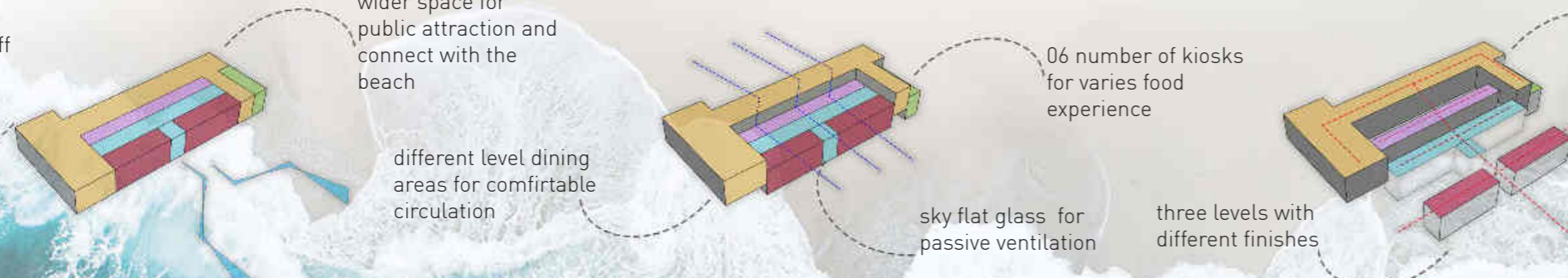
different level dining areas for comfortable circulation

06 number of kiosks for varies food experience

sky flat glass for passive ventilation

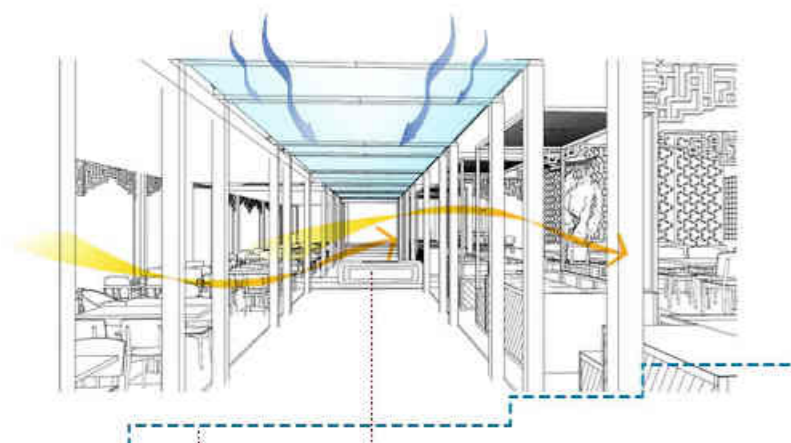
three levels with different finishes

public access pathway represent china street fashion





The main purpose of the beachside restaurant is to deliver exceptional food experiences to its customers. It provides an outstanding food experience with delicious dinner and lunch.

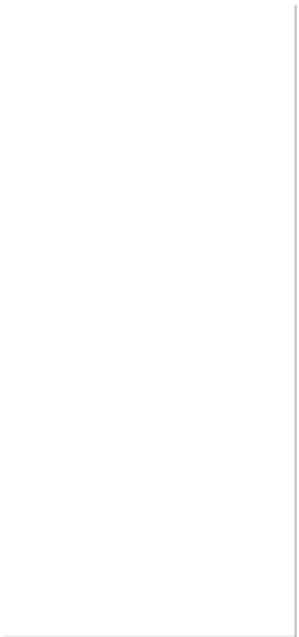
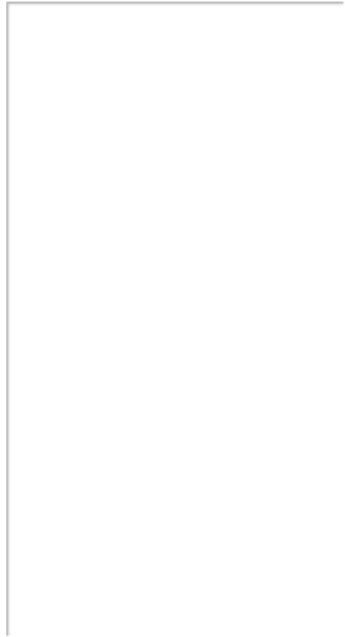


Cross ventilation and more sustainable design implementations

Furniture arrangement in different levels

The crystal-clear glass of the middle kiosk-level dining area provides an amazing atmosphere in the evening. This produces different moods every second. Exterior and interior Color arrangements are well-arranged according to Chinese essence and to get maximum circulation.





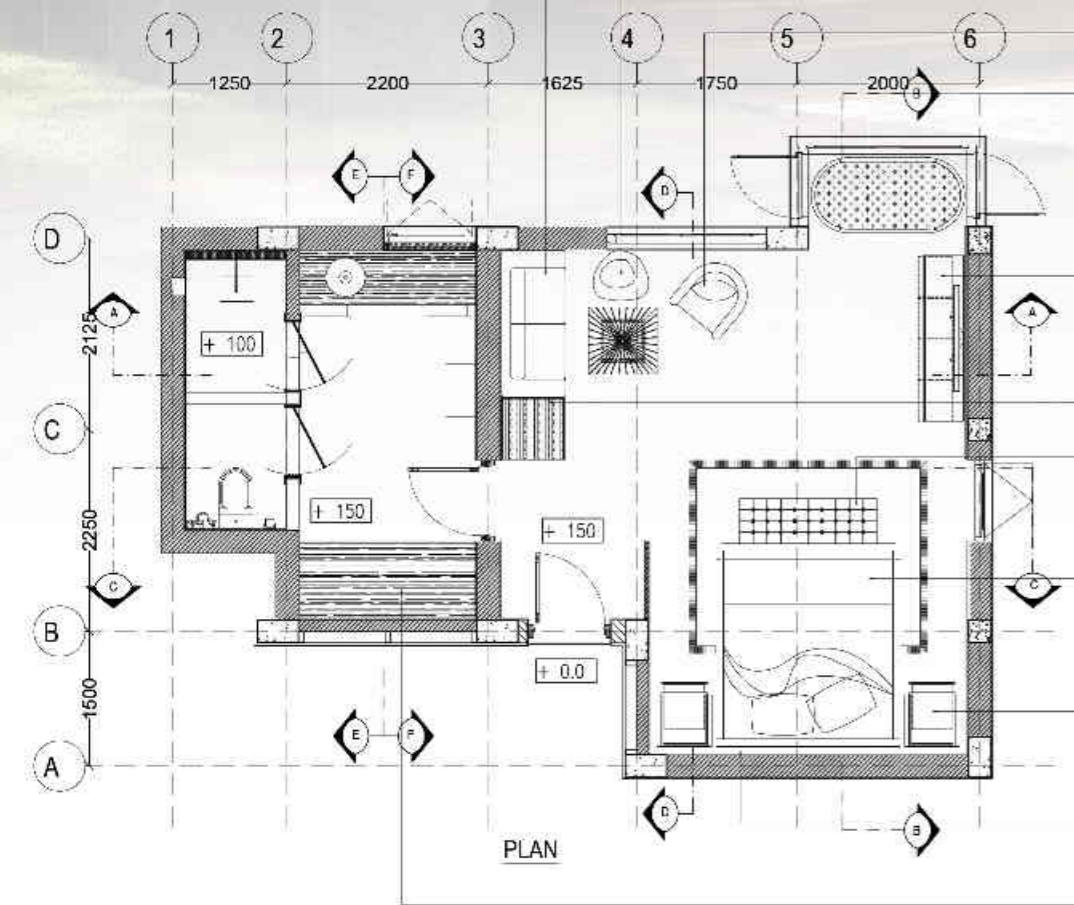


MANDAPA- DINING AREA

ARCHITECTURAL DETAIL DRAWING FOR HOTEL AT KANDY 'MANDAPA'

The selected vernacular building typology for the design of this hotel is a Contemporary combination of Sri Dalada Maligawa and Linked Dewala building forms. Devala, a Buddhist-Hindu Shrine, a unique type of building mostly found in the Kandyan Period Architecture of Sri Lanka (1501-1600).

Generally, Kandyan most of the traditional buildings are built on a plinth of dressed stone. All the major precincts/core areas are organized progressively, emphasizing the hierarchical spatial order. The hotel is also inspired by the Architectural form of Devala and the lobby is two feet above the porch level. Each flight of steps is made up of four stone blocks with carved risers and ends in a carved Kandyan moonstone.



MANDAPA- BEDROOM

FULLY FABRIC UPHOLSTERED TWO SLAIR SOFA WITH THROW PILLOWS OVERALL SIZE (1400MM X 700MM X 450MM) FABRIC AND THE PATTERNS OF THE THROW PILLOWS TO BE SELECT BY THE INTERIOR DESIGNER

FULLY FABRIC UPHOLSTERED FANCY CHAIR FABRIC AND THE PATTERNS OF THE FABRIC TO BE SELECT BY THE INTERIOR DESIGNER

FULLY FABRIC UPHOLSTERED SINGLE SEATER FABRIC AND THE PATTERNS OF THE THROW PILLOWS TO BE SELECT BY THE INTERIOR DESIGNER

FULLY FABRIC UPHOLSTERED HANGING CHAIR WITH NECESSARY CABL SYSTEM, ALL THE FITTINGS AND EQUIPMENTS TO BE SELECT BY THE INTERIOR DESIGNER

TIMBER BASE TV UNIT WITH 35MM BOXED TIMBER TOP, UNIT TO CONSIST OF OPENINGS AS PER DESIGN TO ACCOMMODATE APPLIANCES, ALL DRAWERS TO BE OUT OF TIMBER WITH FINGER GROOVES AND 3/4 OPENING LINEAR SLIDING DRAWER RAILS.

CONCRETE BASED COFFEE TABLE TOP TO BE 5MM THK. TEMPERED GLASS WITH BEVEL EDGE.

LUGGAGE RACK MADE OUT OF MAHOGANY TIMBER AS PER THE DETAIL

FABRIC UPHOLSTERED BEDSIDE SEATER WITH BUTTONED SEAT UPHOLSTERY DETAIL AND RECLINED TIMBER BASE.

CLASS ONE SOLID TIMBER KING SIZE BED WITH SOLID WOOD REINFORCEMENTS WHERE NECESSARY AND 1200MM HIGH HEAD BOARD UPHOLSTERED IN REXENE ACCORDING TO THE DETAIL DESIGN. (WITHOUT MATTRESS) 2180 X 1980 X 350

CLASS ONE SOLID TIMBER BEDSIDE CABINETS WITH DRAWER UNITS SLIDING ON 3/4 OPENING LINEAR SLIDING DRAWER RAILS AND SOLID TIMBER DRAWER FACES WITH FINGER GROOVES.

1200MM HIGH HEAD BOARD UPHOLSTERED IN REXENE ACCORDING TO THE DETAIL DESIGN.

SOLID TIMBER WARDROBE UNIT WITH OPEN FRONT BASE UNIT TO CONSIST OF LONG DRAWERS WITH SINGLE FINGER GROOVED DRAWER FACES WITH 3/4 OPENING SIDE MOUNTED HINGES, OPEN UNIT TO CONSIST OF INTERNAL PROVISION FOR HANGING AND SHIRTING AS PER DESIGN. UNIT TO BE STAINED/AUTO-PAINTED AS PER CLIENTS REQUIREMENT

CUSTOM DESIGN SHAPE MIRROR WITH BRASS DETAIL/FRAME, MIRROR TO BE FIXED TO THE WALL FROM THE 1450MM HEIGHT FROM THE FLOOR LEVEL

CHROME FINISHED SHOWER UNIT

NATURAL RUBBLE STONE WALL FEATURE TO BE WATERPROOFED

12MM THICK TOUGHENED GLASS DOOR WITH SANDBLAST STICKER AND THE SS HANDLE

GRANITE SKIRTING

TILE DROP

75MM WIDTH TIMBER PANEL CLADDED TO THE EXISTING WALL ACCORDING TO THE DETAIL

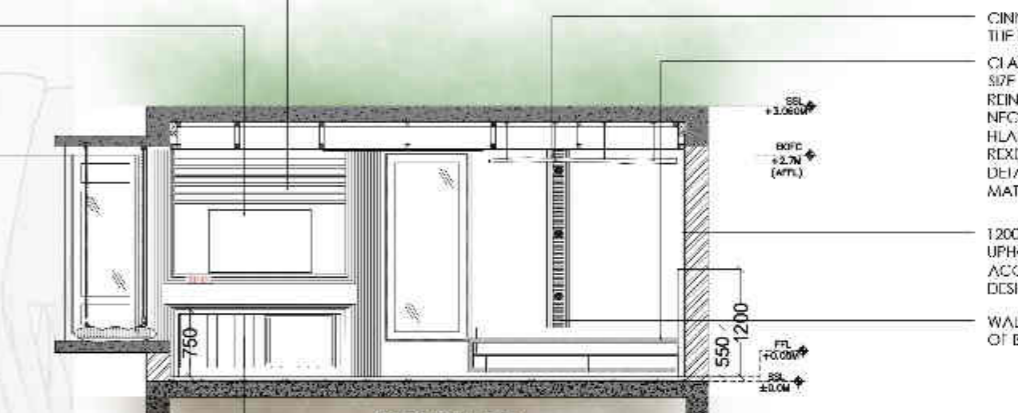
10" TV HUNG TO THE WALL AND THE TV UNIT COUNTER ACCORDING THE DETAILS

FULLY FABRIC UPHOLSTERED HANGING CHAIR WITH NECESSARY CABL SYSTEM, ALL THE FITTINGS AND EQUIPMENTS TO BE SELECT BY THE INTERIOR DESIGNER

TIMBER BASE TV UNIT WITH 35MM BOXED TIMBER TOP, UNIT TO CONSIST OF OPENINGS AS PER DESIGN TO ACCOMMODATE APPLIANCES, ALL DRAWERS TO BE OUT OF TIMBER WITH FINGER GROOVES AND 3/4 OPENING LINEAR SLIDING DRAWER RAILS.



SECTION A-A



SECTION B-B

FULLY FABRIC UPHOLSTERED HANGING CHAIR WITH NECESSARY CABL SYSTEM, ALL THE FITTINGS AND EQUIPMENTS TO BE SELECT BY THE INTERIOR DESIGNER

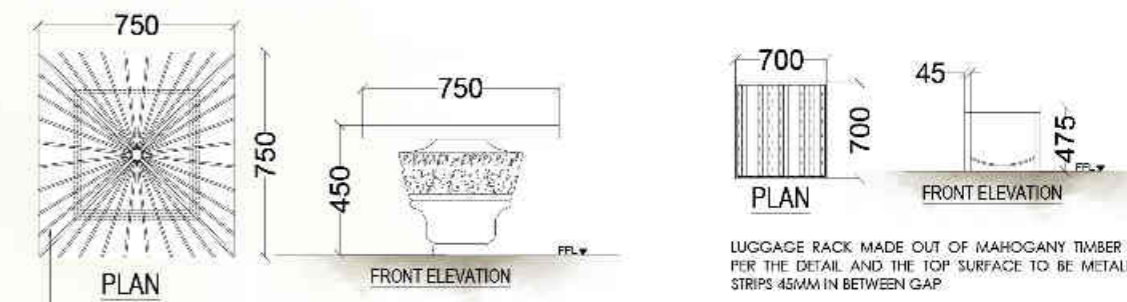
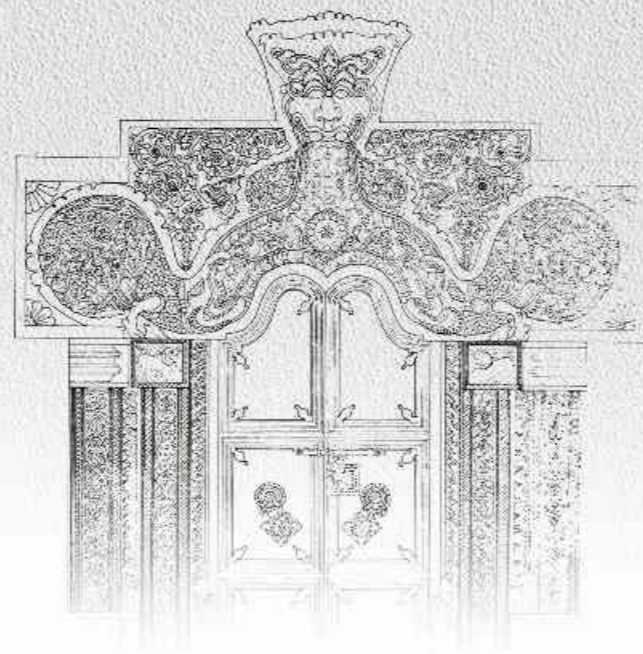
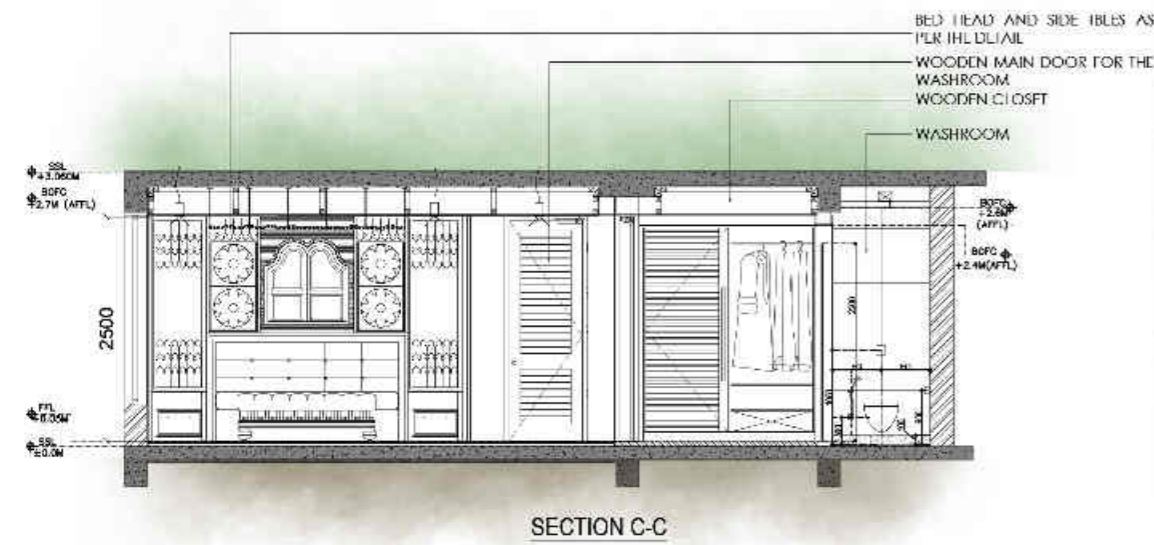
TIMBER BASE TV UNIT WITH 35MM BOXED TIMBER TOP, UNIT TO CONSIST OF OPENINGS AS PER DESIGN TO ACCOMMODATE APPLIANCES, ALL DRAWERS TO BE OUT OF TIMBER WITH FINGER GROOVES AND 3/4 OPENING LINEAR SLIDING DRAWER RAILS.

CINNAMON STICKS HANG ON THE BED BY CARBS

CLASS ONE SOLID TIMBER KING SIZE BED WITH SOLID WOOD REINFORCEMENTS WHERE NECESSARY AND 1200MM HIGH HEAD BOARD UPHOLSTERED IN REXENE ACCORDING TO THE DETAIL DESIGN. (WITHOUT MATTRESS) 2180 X 2100 X 350

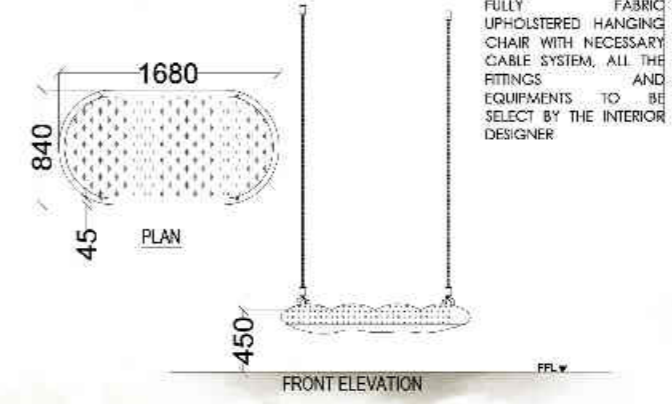
1200MM HIGH HEAD BOARD UPHOLSTERED IN REXENE ACCORDING TO THE DETAIL DESIGN.

WALL PANEL DETAIL MADE OUT OF BRASS

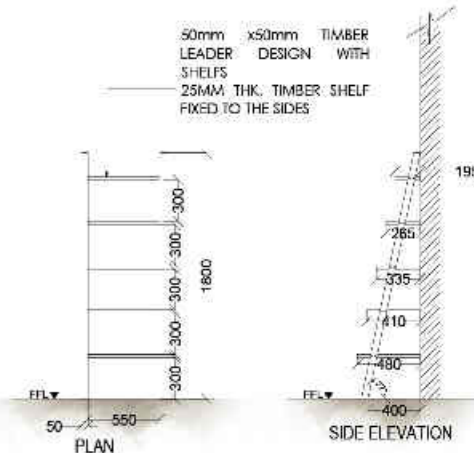


LUGGAGE RACK MADE OUT OF MAHOGANY TIMBER AS PER THE DETAIL AND THE TOP SURFACE TO BE METALLIC STRIPS 45MM IN BETWEEN GAP

COFFEE TABLE BASE MADE OUT OF STONE AND THE TOP SURFACE MADE OUT OF TEAK WOOD STRIPS AND THE TEMPERED GLASS PASTED ON THE STRIPS



FULLY UPHOLSTERED HANGING CHAIR WITH NECESSARY CABLE SYSTEM, ALL THE FITTINGS AND EQUIPMENTS TO BE SELECT BY THE INTERIOR DESIGNER



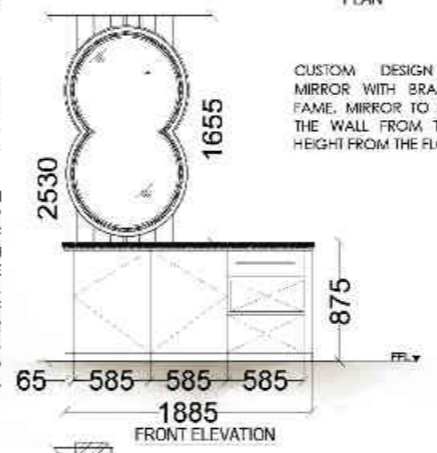
50mm x50mm TIMBER LEADER DESIGN WITH 5 SHELVES 25MM THK. TIMBER SHELF FIXED TO THE SIDES

'Your Majesty, I imagine that the thick green Udawattakele forest behind the palace building is Nila Megha, the blue clouds of the sky, and that in front of the palace building it is possible to create cloud walls in white. Then, by transforming the paddy fields into a lake, one will see the reflection of the cloud walls and the palace buildings in water, and no doubt it will appear like a city floating in the sky'



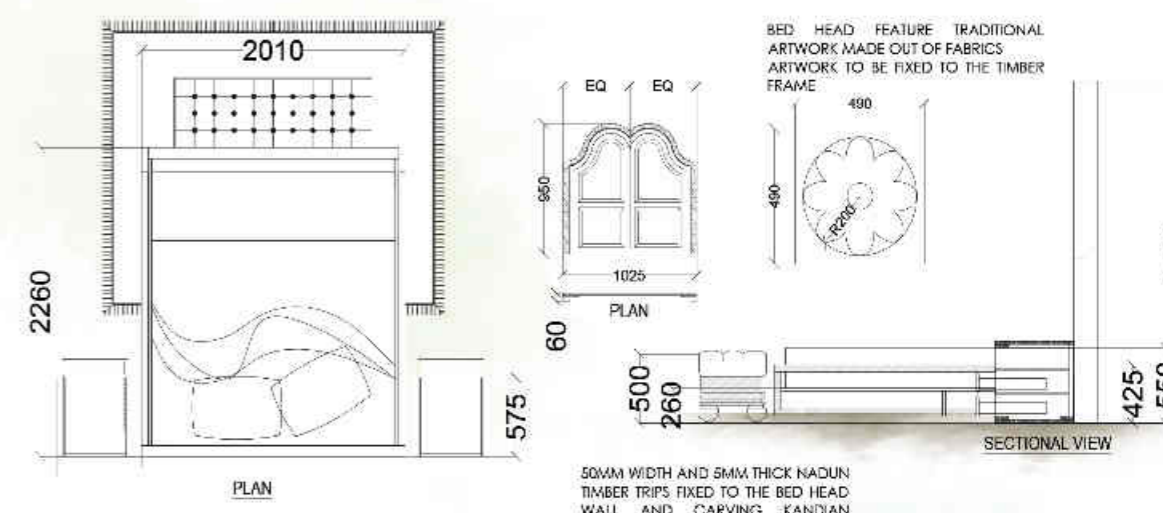
75MM WIDTH TIMBER PANEL GLAZED TO THE EXISTING WALL ACCORDING TO THE DETAIL

40" TV FIXED TO THE WALL AND THE TV UNIT COUNTER ACCORDING THE DETAILS



CUSTOM DESIGN SHAPE MIRROR WITH BRASS DETAILED FRAME. MIRROR TO BE FIXED TO THE WALL FROM THE 1450MM HEIGHT FROM THE FLOOR LEVEL

TIMBER BASE TV UNIT WITH 35MM BOXED TIMBER TOP. UNIT TO CONSIST OF OPENINGS AS PER DESIGN TO ACCOMMODATE APPLIANCES. ALL DRAWERS TO BE OUT OF TIMBER WITH FINGER GROOVES AND 3/4 OPENING LINEAR SLIDING DRAWER RAILS.



BED HEAD FEATURE TRADITIONAL ARTWORK MADE OUT OF FABRICS ARTWORK TO BE FIXED TO THE TIMBER FRAME

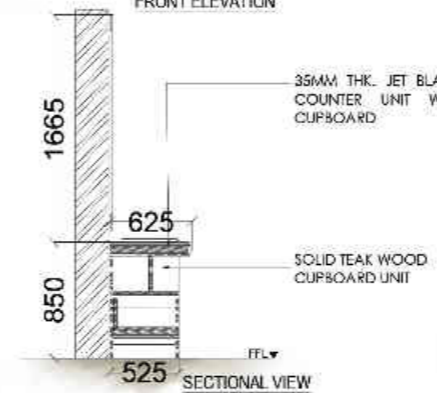
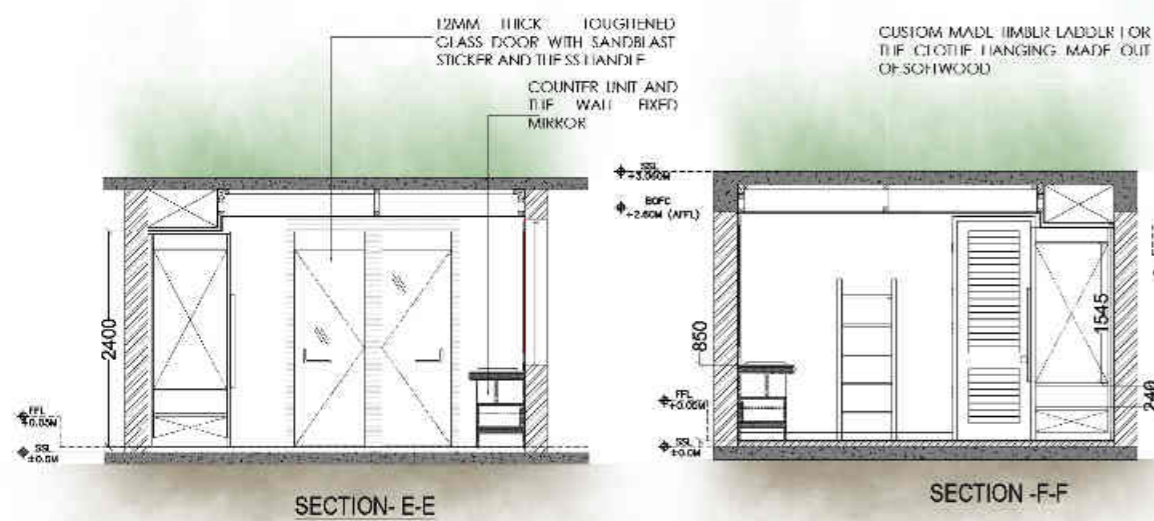
50MM WIDTH AND 5MM THICK NADUN TIMBER TRIPS FIXED TO THE BED HEAD WALL AND CARVING KANDIAN TRADITIONAL DOUBLE WINDOW AS A FEATURE

BED SIDE PANEL MADE OUT OF TIMBER WITH CARVING
BED HEAD FEATURE TRADITIONAL ARTWORK MADE OUT OF FABRICS
50MM X 50MM BED HEAD TIMBER BAND

BED HEAD FABRICATIONS
KING SIZE BED WITH 8" SPRING MATTRESS
BED SIDE TABLE MADE OUT OF TIMBER
RUG AND THE FABRICATED BED SIDE SEATER

BED SIDE SEATER LEGS MADE OUT OF SOLID TIMBER ACCORDING TO THE DETAIL

600 BED SIDE PANEL MADE OUT OF NADUN TIMBER AND INDIVIDUAL PIECES TO BE PASTED ON THE TIMBER



35MM THK. JET BLACK STARON COUNTER UNIT WITH UNDER CLIPBOARD

SOLID TEAK WOOD COUNTER UNIT

FIXING DETAIL FOR TV UNIT TO THE PANEL



**BEARD PAPA'S, CAFE AT ONE GALLEFACE
COLOMBO, SRI LANKA | 2020**

Owned project tasks:
Interior Design, Consultation, and 3D visualization

Beard Papa's, an internationally recognized chain of cream puff stores originating from Japan under parent company Muginoho Co. Ltd. The outlet has been designed at One Galle Face, Shangri-La, and savor the taste of fresh and authentic Japanese cream puffs.



**THE INTERIOR DESIGN FOR SRI LANKA
INSTITUTE OF NANOTECHNOLOGY
PHASE II
HOMAGAMA, SRI LANKA | 2020**

Owned project tasks: Interior Design and 3D visualization
Lead Architect: Arch International (Pvt) Ltd, Sri Lanka.

The project was awarded a Platinum certification level of LEEDs for its high standards of sustainability just like its predecessor. The choice of materials reflects on the modern and hi-tech architectural styles and contributes to making the center stand out as a sleek and refined facility. The use of glass, aluminum, and steel break the monotony of the concrete structure and adds aesthetic appeal to the building while improving functionality.



**THE INTERIOR DESIGN FOR SRI LANKA
INSTITUTE OF BIOTECHNOLOGY
HOMAGAMA, SRI LANKA | 2021**

Owned project tasks: Interior Design and 3D visualization
Lead Architect: Arch International (Pvt) Ltd, Sri Lanka.

SLIBTEC is an ecosystem conducive for high-end biotech innovation created by the continued adoption of cutting-edge technologies in dedicated facilities with support systems. The interior design consists of office cubicles. The interior spatial and functional coherence creates a natural flow between laboratories, office areas, conference rooms, and social zones, for researchers.



COLOMBO, SRI LANKA | 2021

Owned project tasks: Interior Design and 3D visualization
Lead Architect: Arch International (Pvt) Ltd, Sri Lanka.

Quality acoustical characteristics are important in Auditorium spaces so that performances and presentations can be heard and understood. The auditorium consists of 300 seats and a separate conferences hall with 100 seats. The ceiling feature gives acoustic characteristics and a unique feeling to the interior.



PORSHIA SKYLINE RESIDENCIES APARTMENT COLOMBO, SRI LANKA | 2019

Owned project tasks: Interior Design, Concept Development and 3D visualization

Lead Architect: Arch International (Pvt) Ltd, Sri Lanka.

The Porshia Skyline Residencies is an up-market residential area. A New Urban Tower is built on the idea that well-designed apartments support wellbeing and connection in the community, it's home to like-minded people who value community, good design, urban living, sustainability, and a balanced approach to life. The thirteen levels of unique architecture create an imposing structure that blends seamlessly into the illustrious luxury.

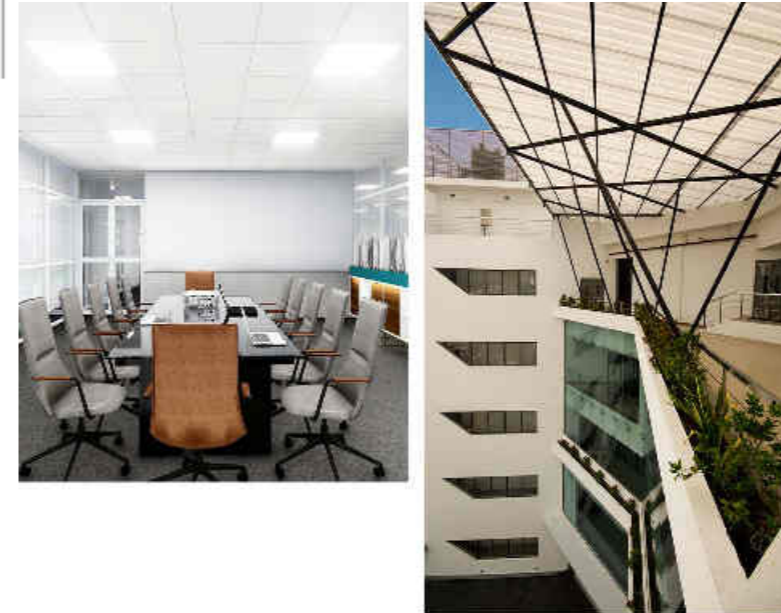


ARIYANA RESORT APARTMENT ATHURUGIRIYA, SRI LANKA | 2020

Owned project tasks: Interior Design, Concept Development and 3D visualization

Lead Architect: Arch International (Pvt) Ltd, Sri Lanka.

For the first time in Sri Lanka, a real estate company introduce the Resort Apartment Concept with 50+ Activities and redefine apartment living in this country. 20% of the area for Apartments and 80% for recreational areas. It is yet another green concept with a great difference. It is not just a town in a rural setting but a Resort in the city. Further, contemporary gymnasium, a swimming pool, and many recreational areas.



BUILDING FOR POSTGRADUATE INSTITUTE OF MEDICINE COLOMBO, SRI LANKA | 2018

Owned project tasks: Interior Design, Concept Development and 3D visualization

Lead Architect: Arch International (Pvt) Ltd, Sri Lanka.

It is an 8-story building to house academic activities. The building mainly provides tutorial and lecture hall facilities along with a variety of laboratory facilities. Apart from that it also contains facilities such as libraries, auditorium, discussion rooms, staff, and student recreation areas, a canteen and a roof terrace.

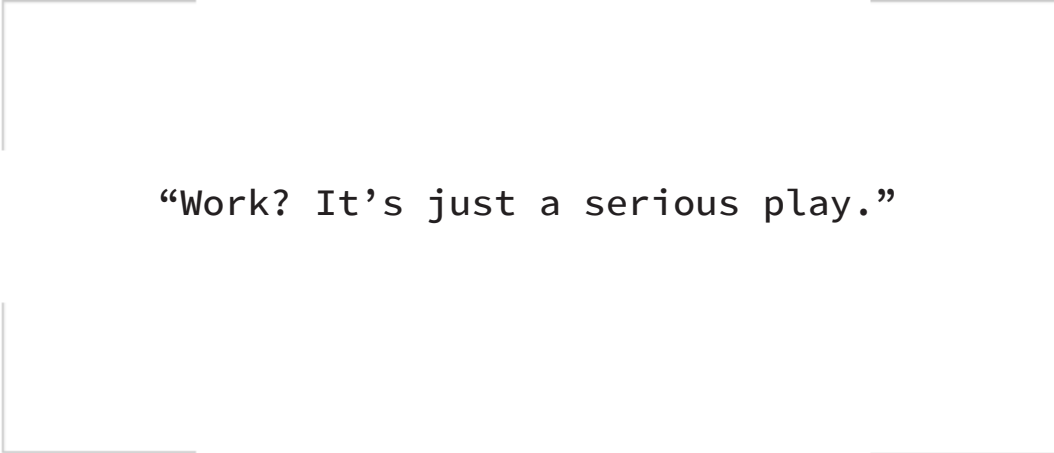


INTEGRATED NETWORK OPERATION CENTER MODERNIZATION COLOMBO, SRI LANKA | 2021

Owned project tasks: Interior Design, Consultation, 3D visualization

Lead Architect: Arch International (Pvt) Ltd, Sri Lanka.

The Space creates a stirring atmosphere for a mission control purpose to tie together with the latest thinking, finest materials and cutting edge tech to generate an info-com and knowledge-rich society. Workstations are designed as an immediate working environment with human factors, maximum comfort in mind, and intelligent controls which were created with the teamwork of progressive thinkers. Tranquil breakout spaces are incorporated within the space for changing the task-oriented working environs by pacifying architectural perceptions.



“Work? It’s just a serious play.”

VIDURANGA BANDARA
INTERIOR DESIGNER

+94 71 296 4777
vidurangalakruwan@gmail.com