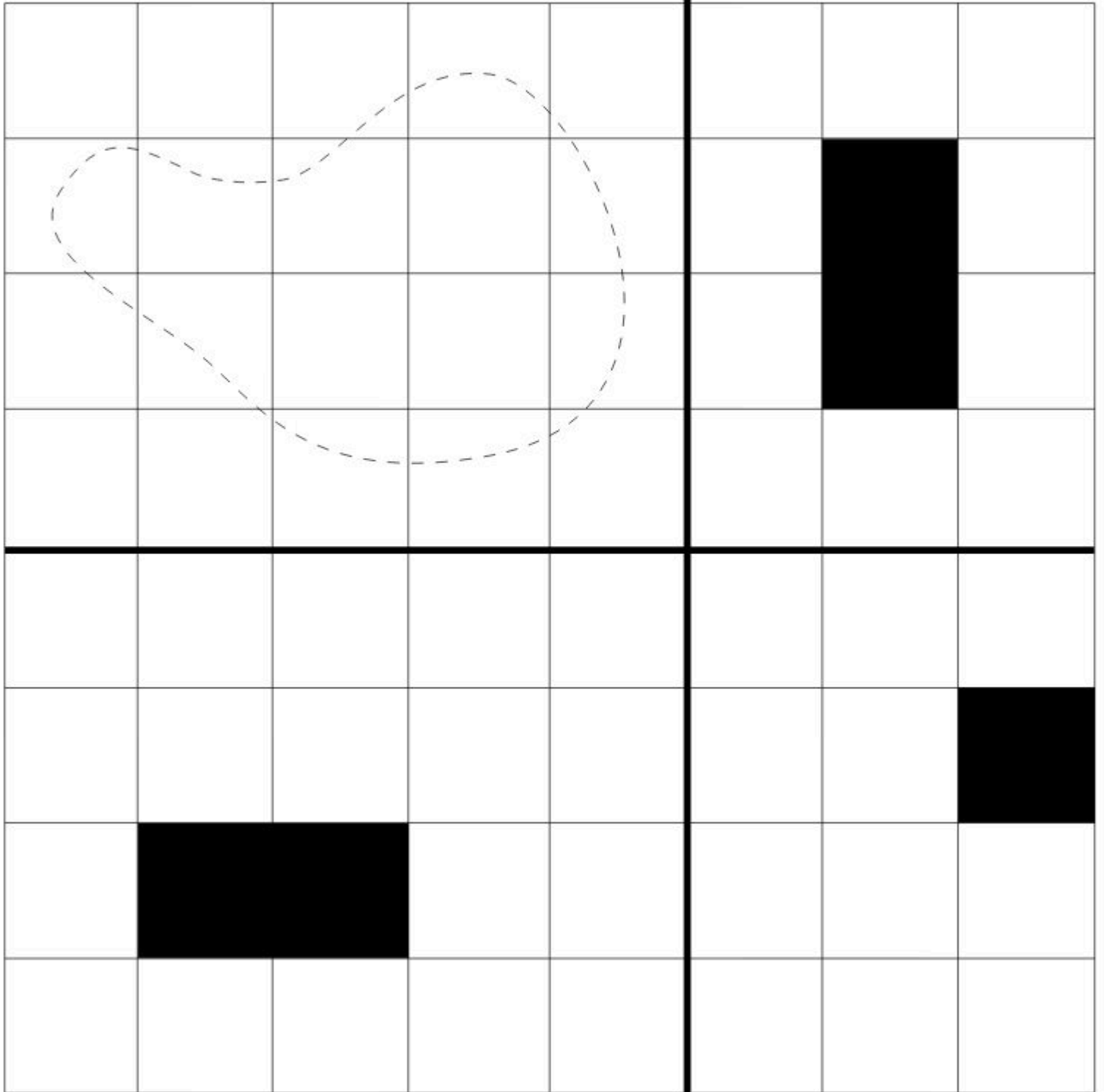


**MARTA  
LINYNSKA**

**ARCHITECTURE  
PORTFOLIO +**



**2024**

**SELECTED WORKS**

# content

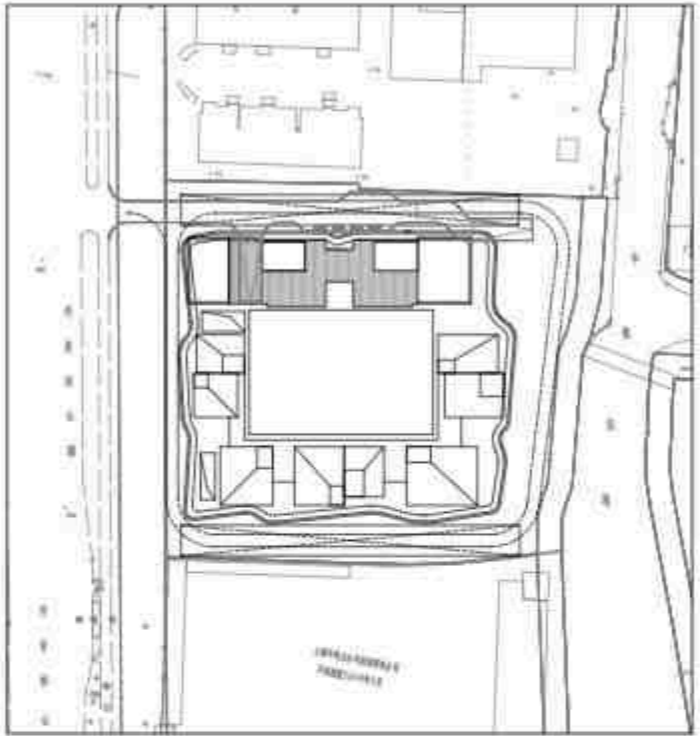
 <p>Qingpu, 2023 <b>Village Nexus Office</b> <i>concept</i></p>	 <p>Hangzhou, 2024 <b>KUKA Headquarters</b> <i>concept</i></p>	 <p>Tintai, 2022 <b>Natural Outdoor Goods</b> <i>in construction</i></p>	 <p>Qingpu, 2022 <b>Art Gallery</b> <i>in construction</i></p>		
 <p>Qingpu, 2022 <b>Primary School Design</b> <i>in construction</i></p>	 <p>Guangming, 2020 <b>Factory Dorms &amp; Office</b> <i>concept</i></p>	 <p>Jiaxing, 2019 <b>Future Cimmunity</b> <i>concept</i></p>	<p><b>BAU</b> <b>TEN</b> 十间建筑 <b>圣橡树</b> *****</p> <p><b>Other...</b></p>		



# VILLAGE NEXUS COMMUNITY OFFICE





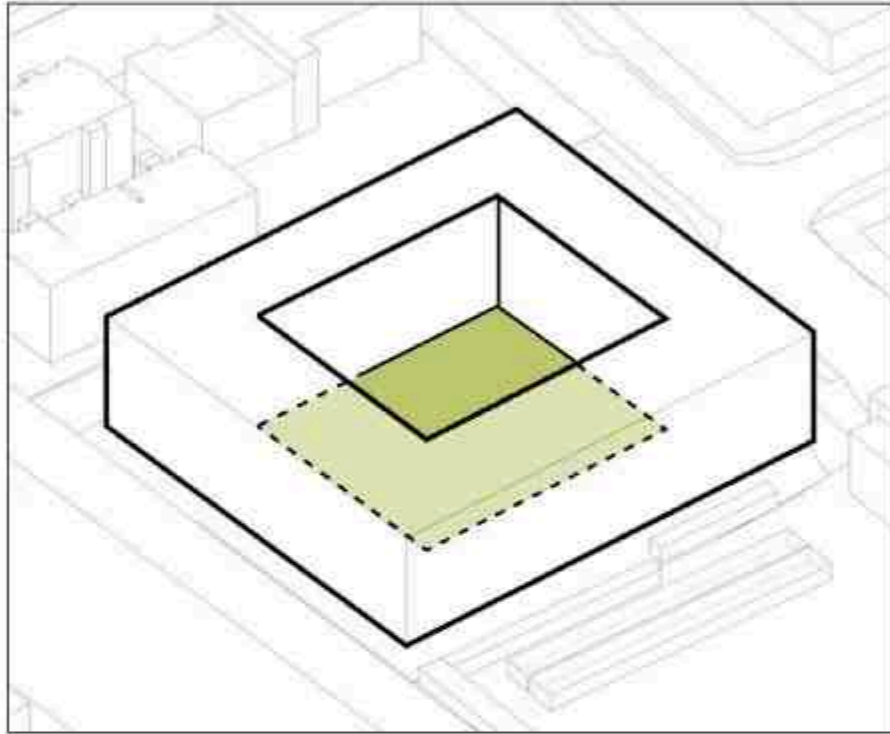


(1)

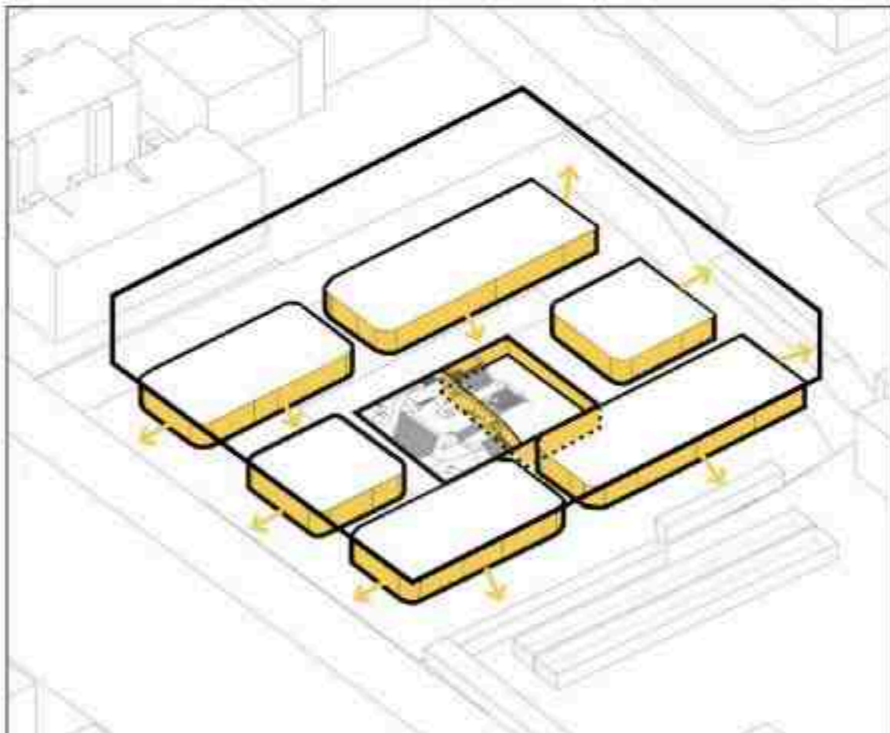
The site is situated in Qingpu, one hour west of Shanghai. The surroundings of the site offer good river and park views from three major directions. The site is primarily surrounded by residential compounds, with a lack of significant public spaces in the area. Given the conditions, it is proposed to fill the ground floor of the building with commercial programmes, while the top floors will be occupied by offices with smaller-scale villas. The existing 15m green belt to the north holds the potential to transform into a bustling green corridor, connecting the site with the metro stop and creating an active public space.

1. Site plan

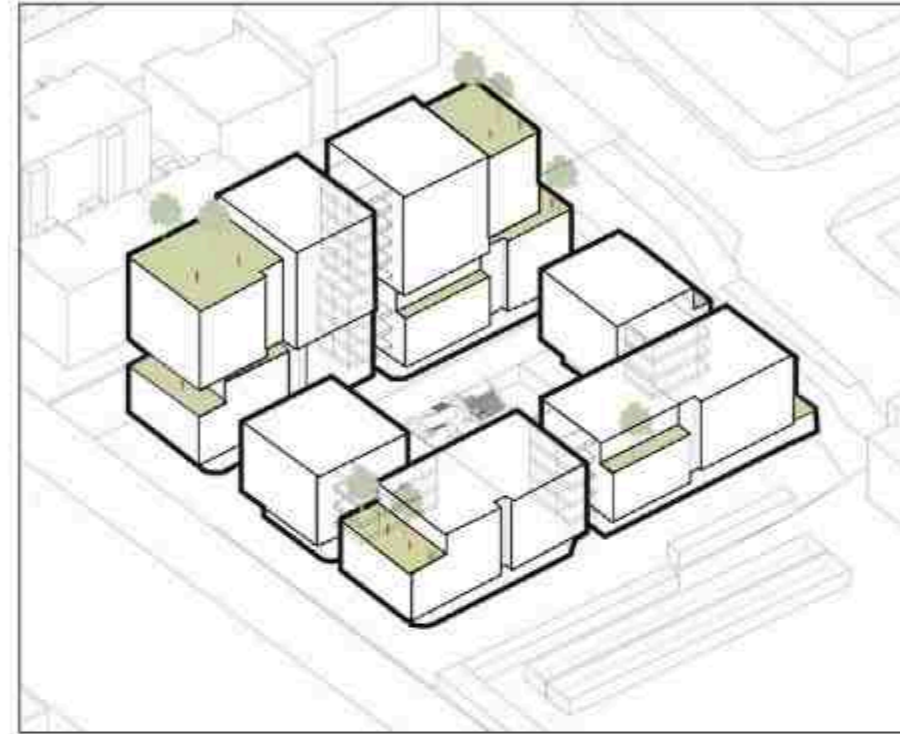




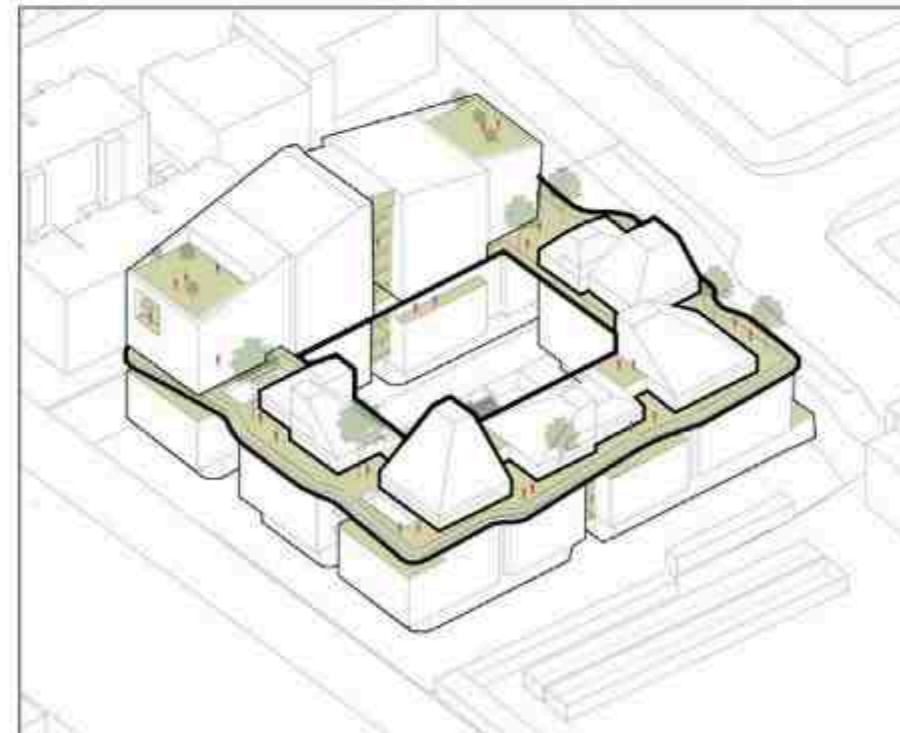
**1. The perimeter building creates a comfortable courtyard while also respecting the urban edge.**



**2. The ground floor is dedicated to commercial programs and is accessible to the public.**

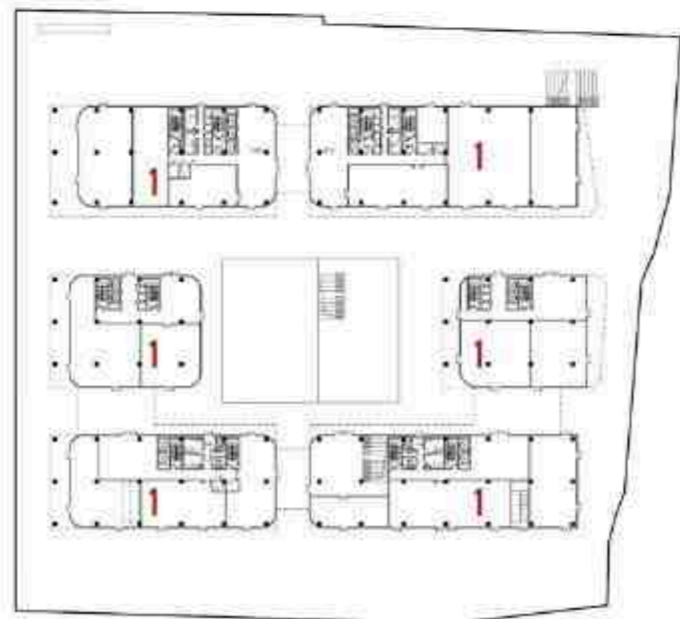


**3. Scaling down building volume through the fragmentation of larger masses into smaller components.**



**4. Additionally, smaller scale office villas are incorporated onto the green public roof.**





*Floor plans*

*1. Commercial space*


*2. Office*

*3. Villa offices*



# KUKA HEADQUARTERS IN QIANTANG, HANGZHOU

## A PLACE OF IMAGINATION, CONNECTION AND PEACE



Kuka Headquarters is a traditional perimeter block with a unique combination of podium with "floating" slab buildings above. Between the two is a series of green roofs, and pavilions overlooking the river: we call these the *Kuka Hanging Gardens*.

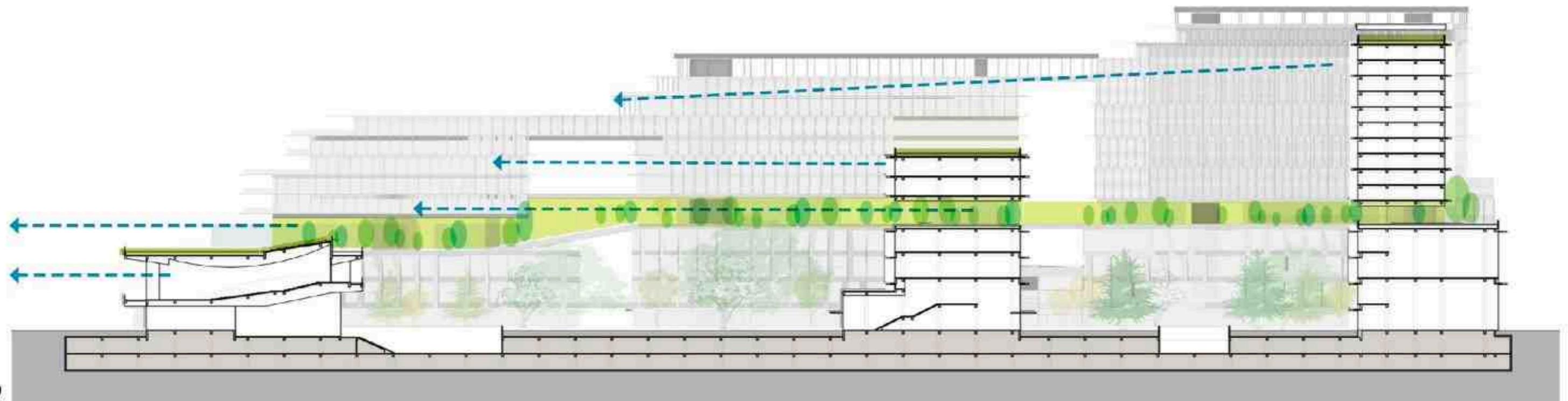
As a perimeter block the project is highly connected to the city and has the potential for all manner of street edge programmes to develop. This typology also creates large scale courtyard gardens within the block. The green roofs above are more than picturesque. They radically reduce summer temperatures and reduce the load on, and cost of, air conditioning systems. They support bio-diversity and bring nature to the occupants, reducing stress levels.

The hanging gardens are a connected network, stepping down towards the river to allow river views from all locations. Pavilions are dotted throughout the gardens to provide staff a special place to eat, have meetings or socialize. The slab buildings are likewise stepped. This creates yet more garden space and a bounty of sheltered terraces for the office workers to flow out onto. This is an eden, an oasis, in which to work. It is a stimulating, highly connected, yet peaceful campus.





(1)

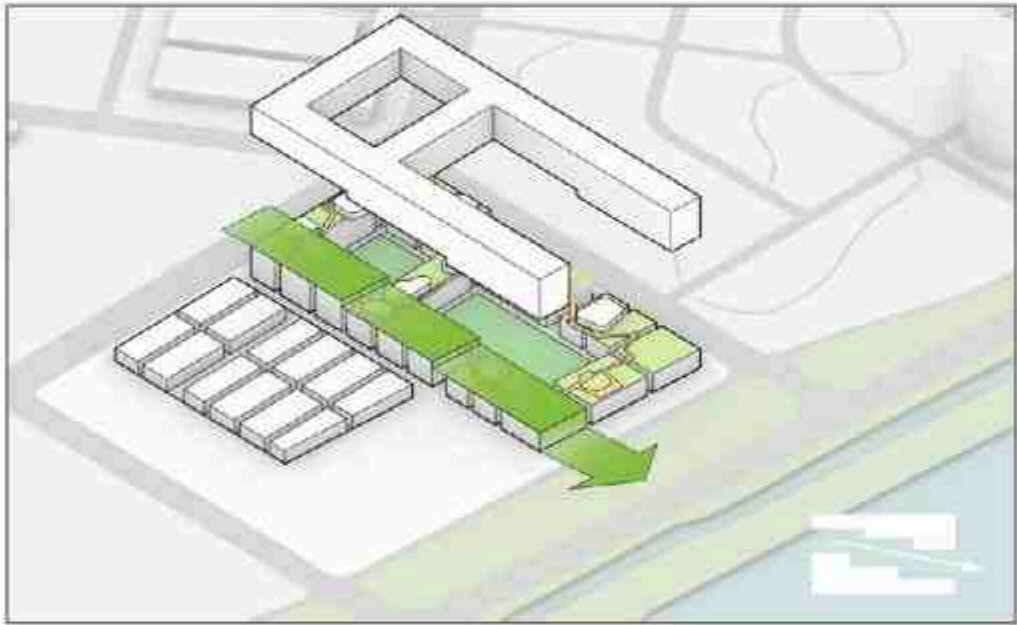


(2)

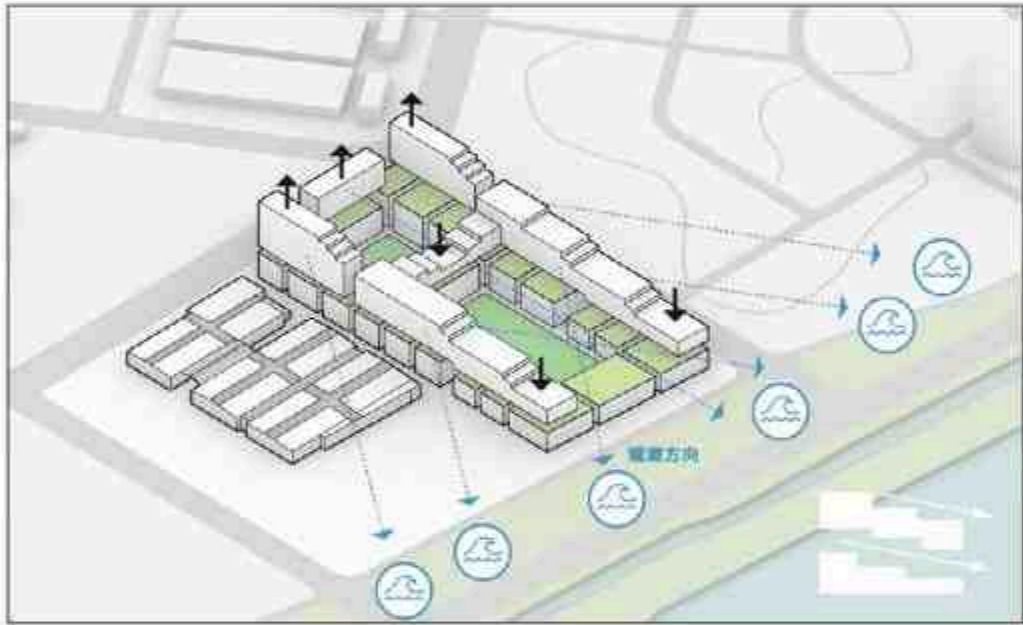
1. Lecture hall. Panoramic view of the courtyard and riverfront

2. Cross section with the connected public gardens

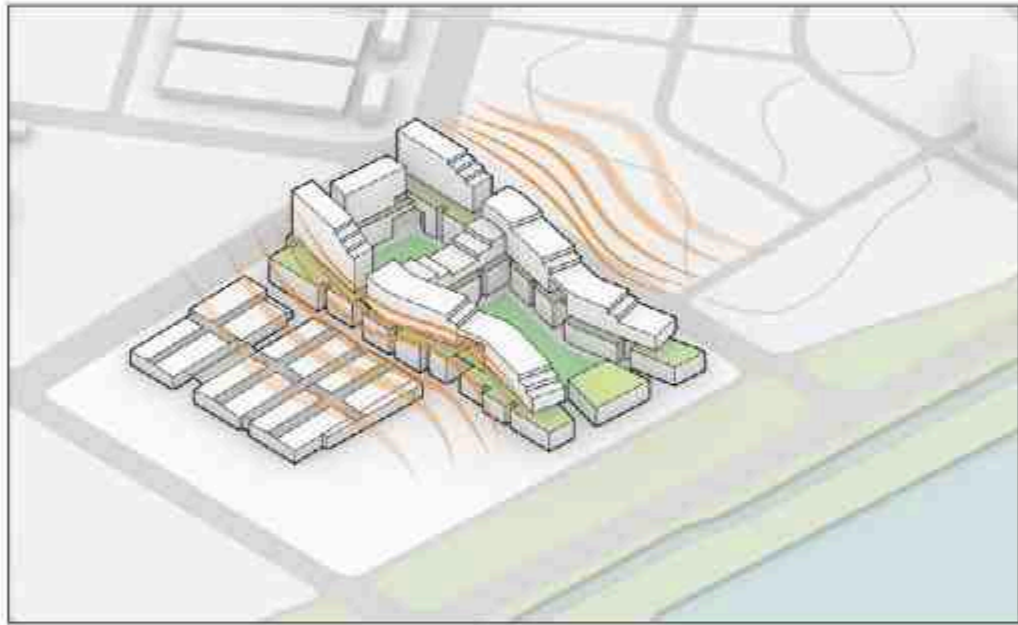




**1. U-shape layout with river view from three sides**



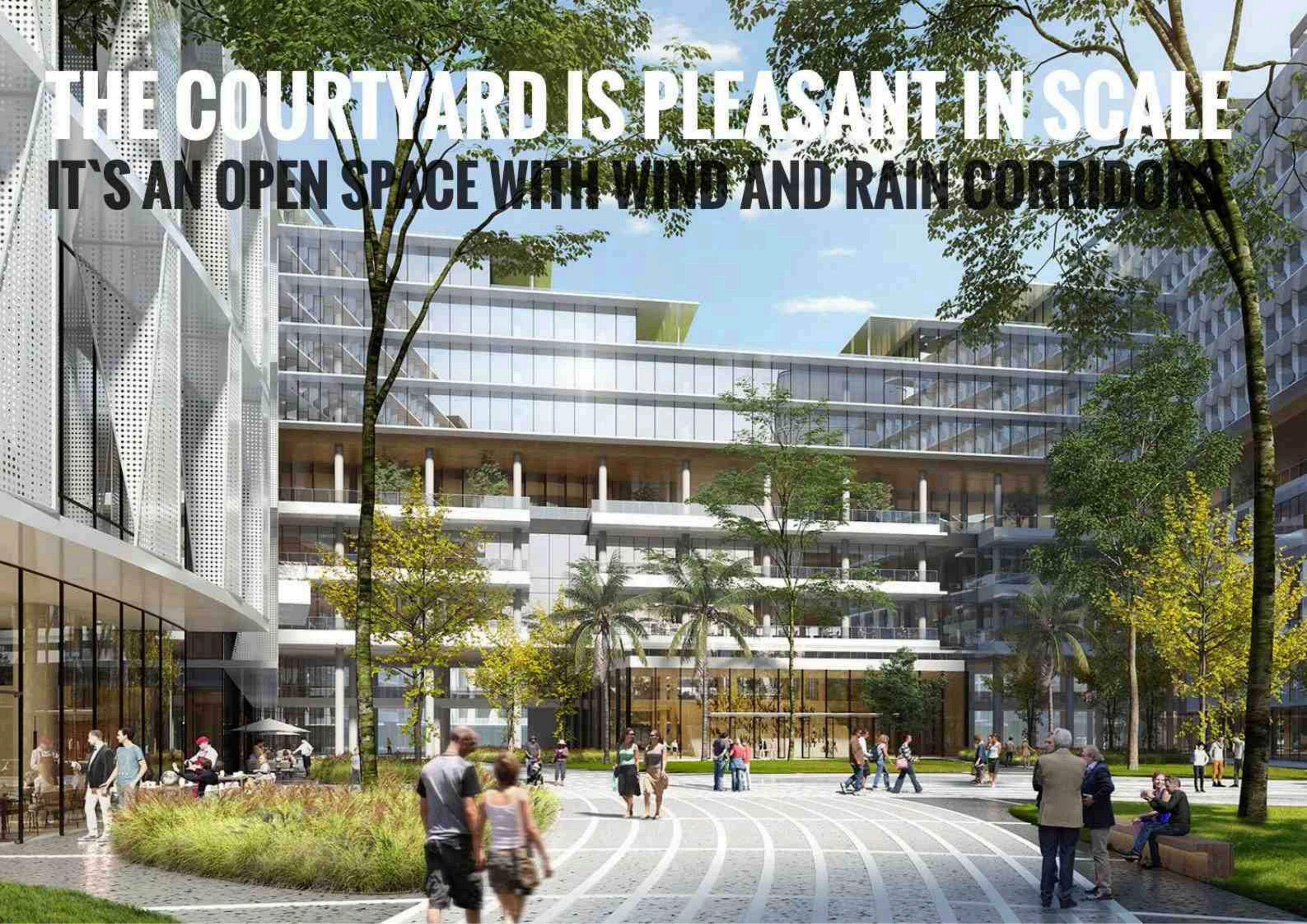
**2. Stepped terraces to enjoy river view on every level**



**3. The tower twists and turns, echoing the shape of the tide**



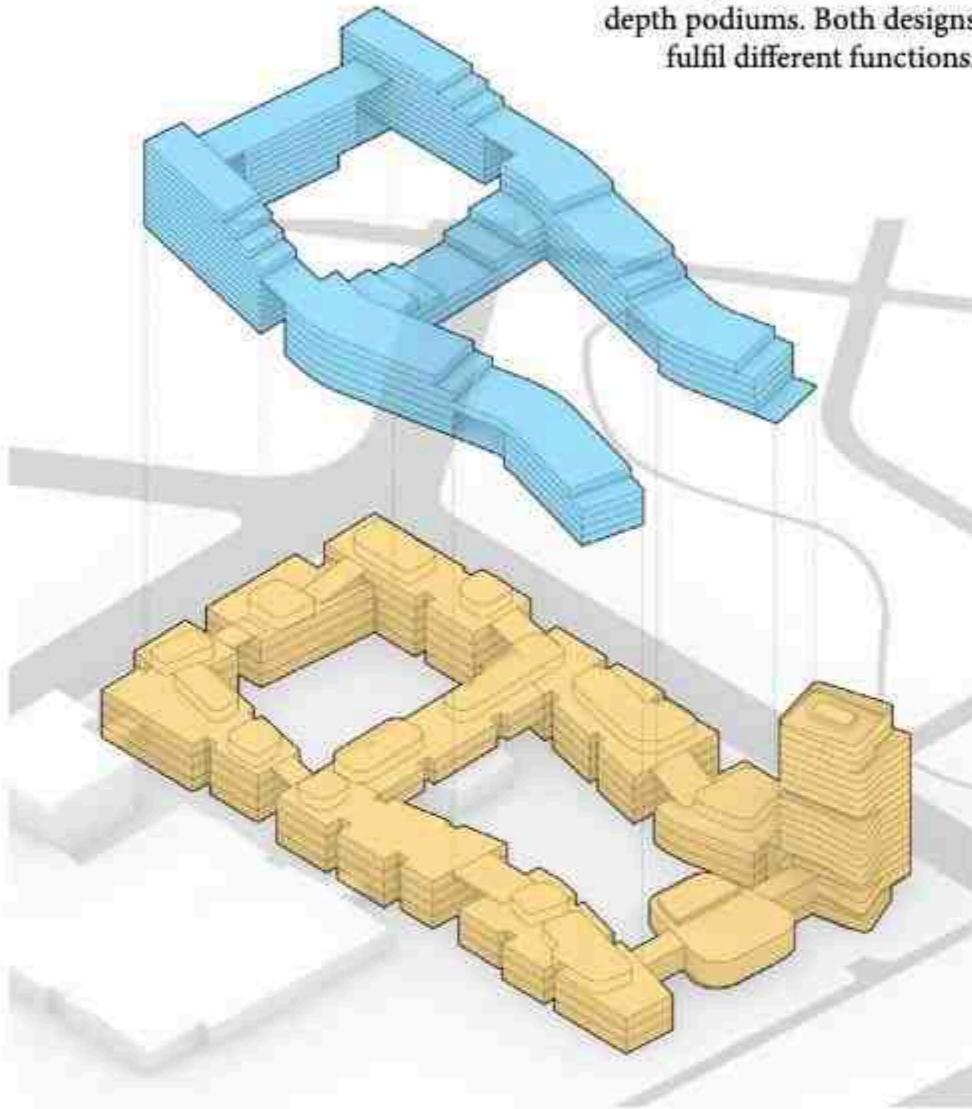
**THE COURTYARD IS PLEASANT IN SCALE  
IT'S AN OPEN SPACE WITH WIND AND RAIN CORRIDORS**





The circular layout allows for flexible division of space to accommodate future changes in demand.

Narrow-depth towers and wide-depth podiums. Both designs fulfil different functions.



The frame structure can meet the needs of future functional changes and adapt to new use scenarios. For example, the dormitory on the east side can be used as a hotel in the future.

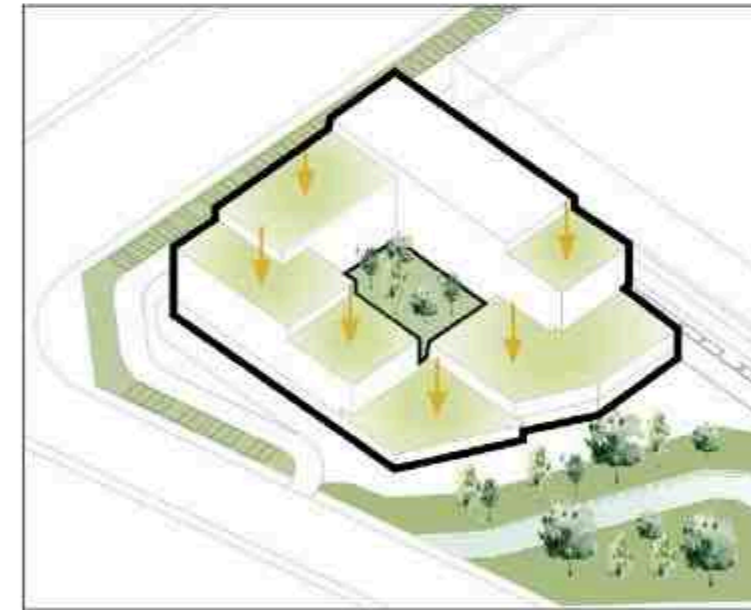
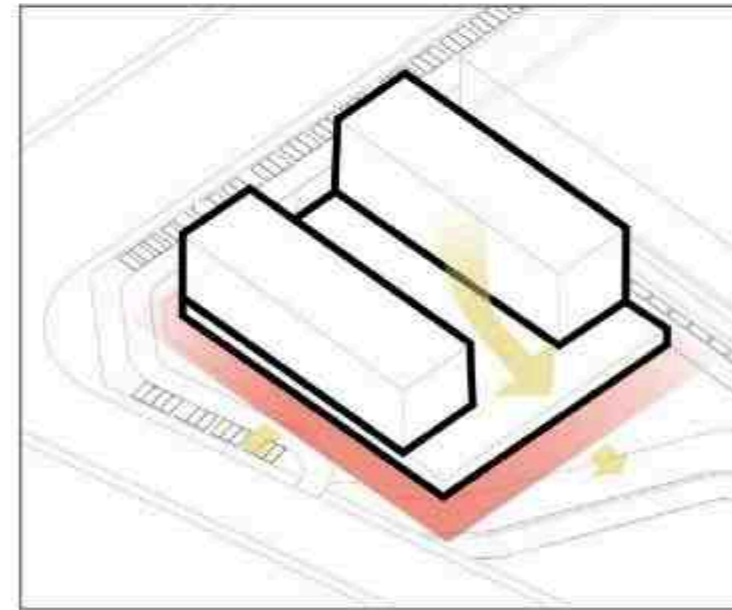
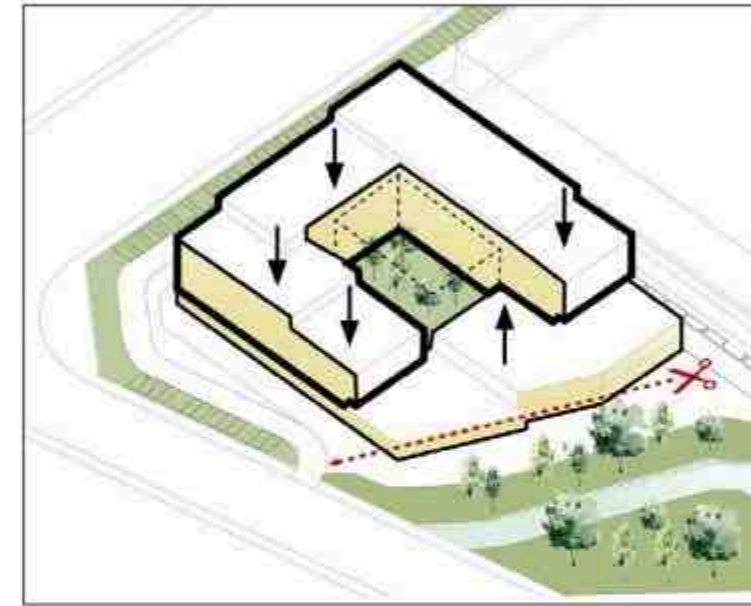
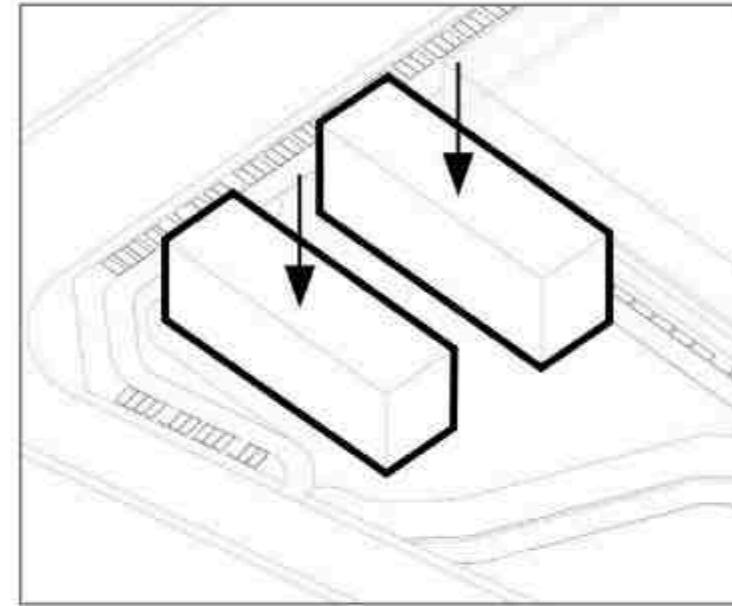
## BUILDING FLEXIBILITY

# POSITIVE AND PLEASANT URBAN INTERFACE, PUBLIC OPEN URBAN SPACE





# 'NATURE' HEADQUARTERS



Tiantai is located in a mountainous area with a complex landscape. The project consists of two buildings - the 'Nature' office headquarters to the North of the site and the dormitory building to the South, where a great view towards the mountains opens up. The aim of the project is to create a healthy workplace and to rethink the future of the

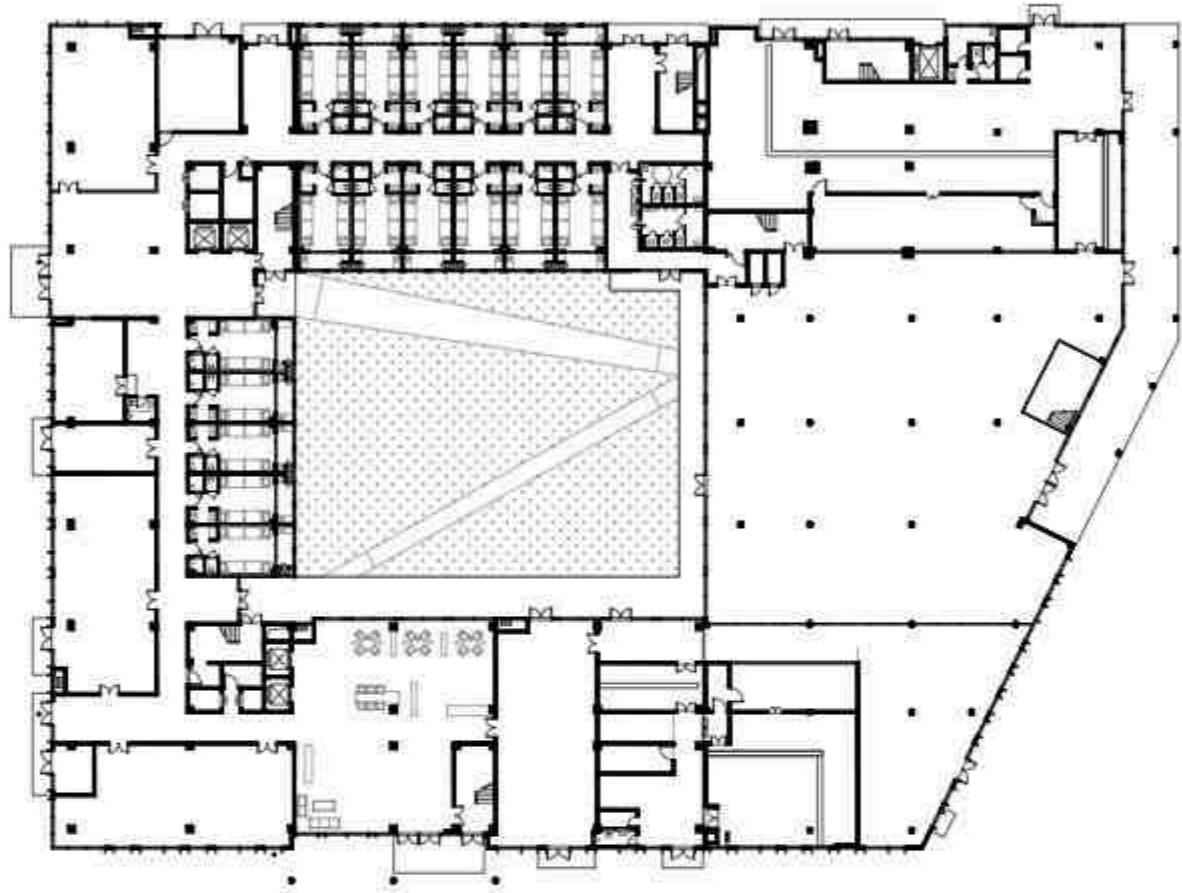
office, with a particular focus on well-being and connectivity. By creating well-connected office and living spaces, openness to greenery, and special resting places that bring people together, we enhance the possibility to collaborate, build personal and professional relationships, and connect with a company's unique business, mission, and purpose.



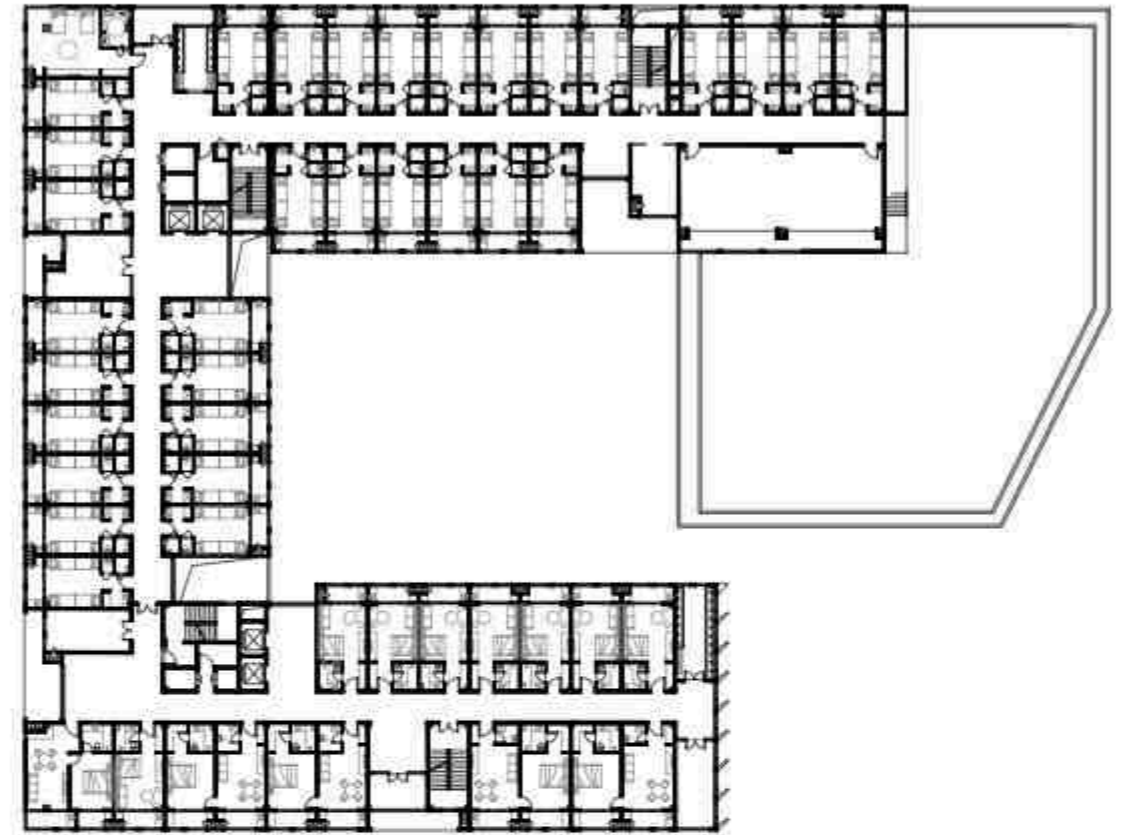
# HUMAN-EXPERIENCE DESIGN IS A POWERFUL OPPORTUNITY



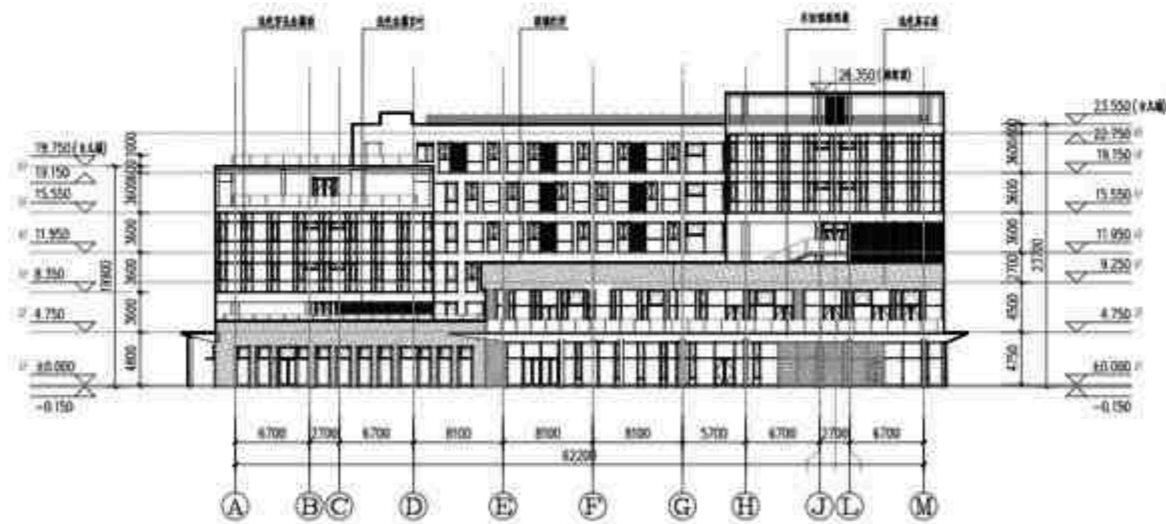




(1)



(3)



(2)



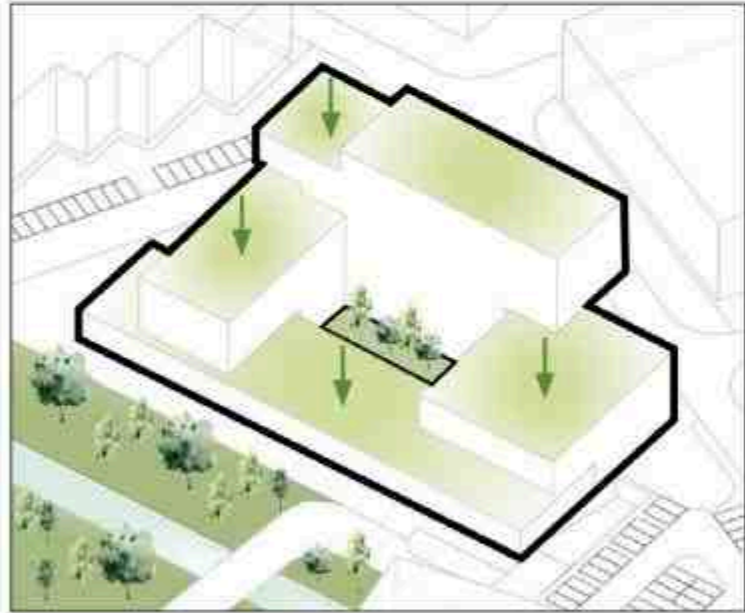
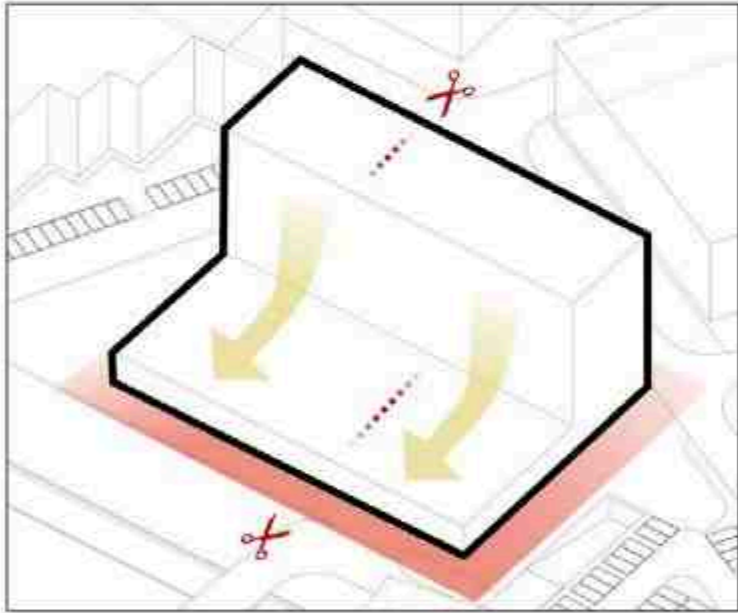
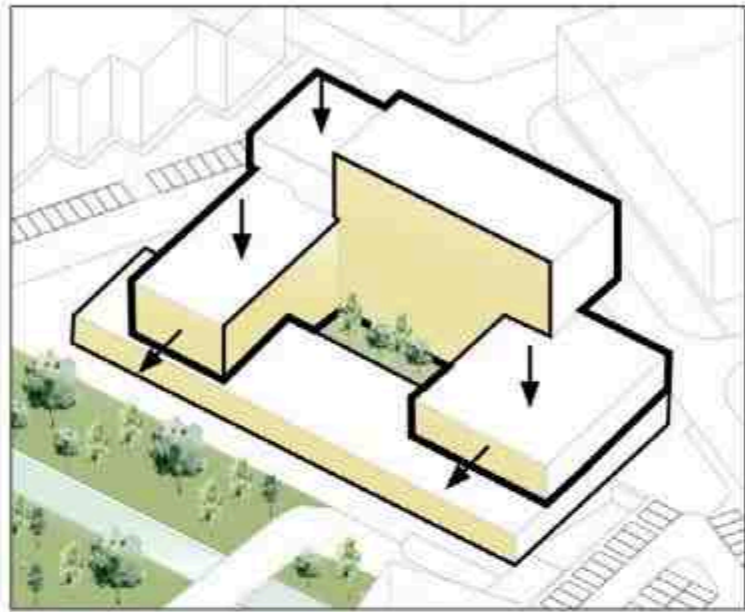
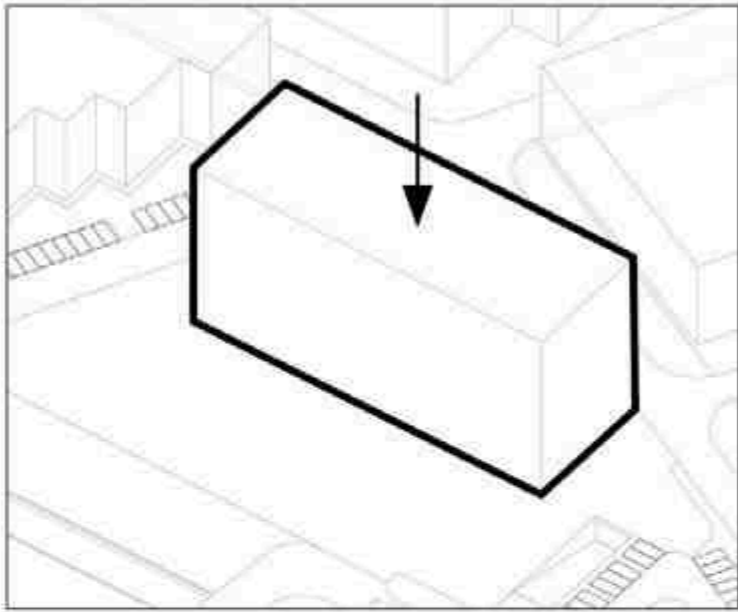
(4)



# THE POST-PANDEMIC WORKPLACE THAT ENCOURAGES SOCIAL INTERACTIONS

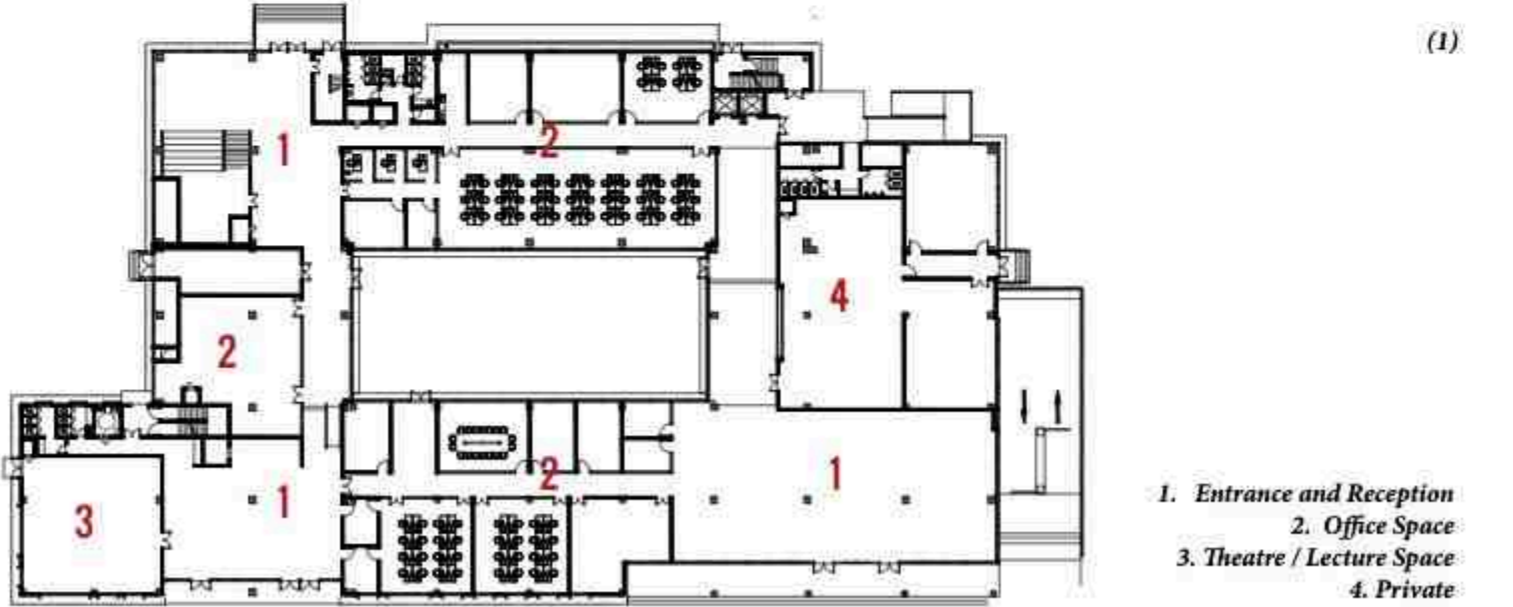
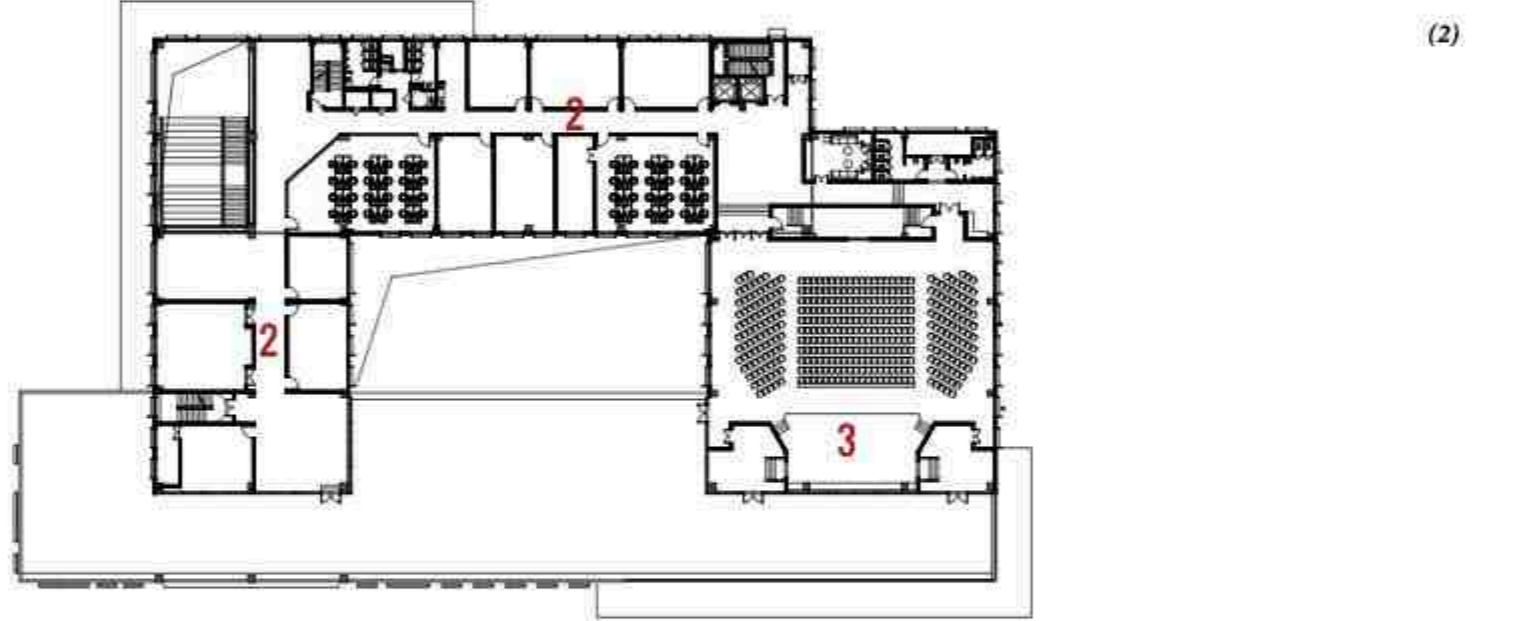






The courtyard allows for more natural light in the open plan office on the lower levels, creating a natural indoor and outdoor experience. Each floor has its own outdoor terrace that offers a good relationship with the moun-

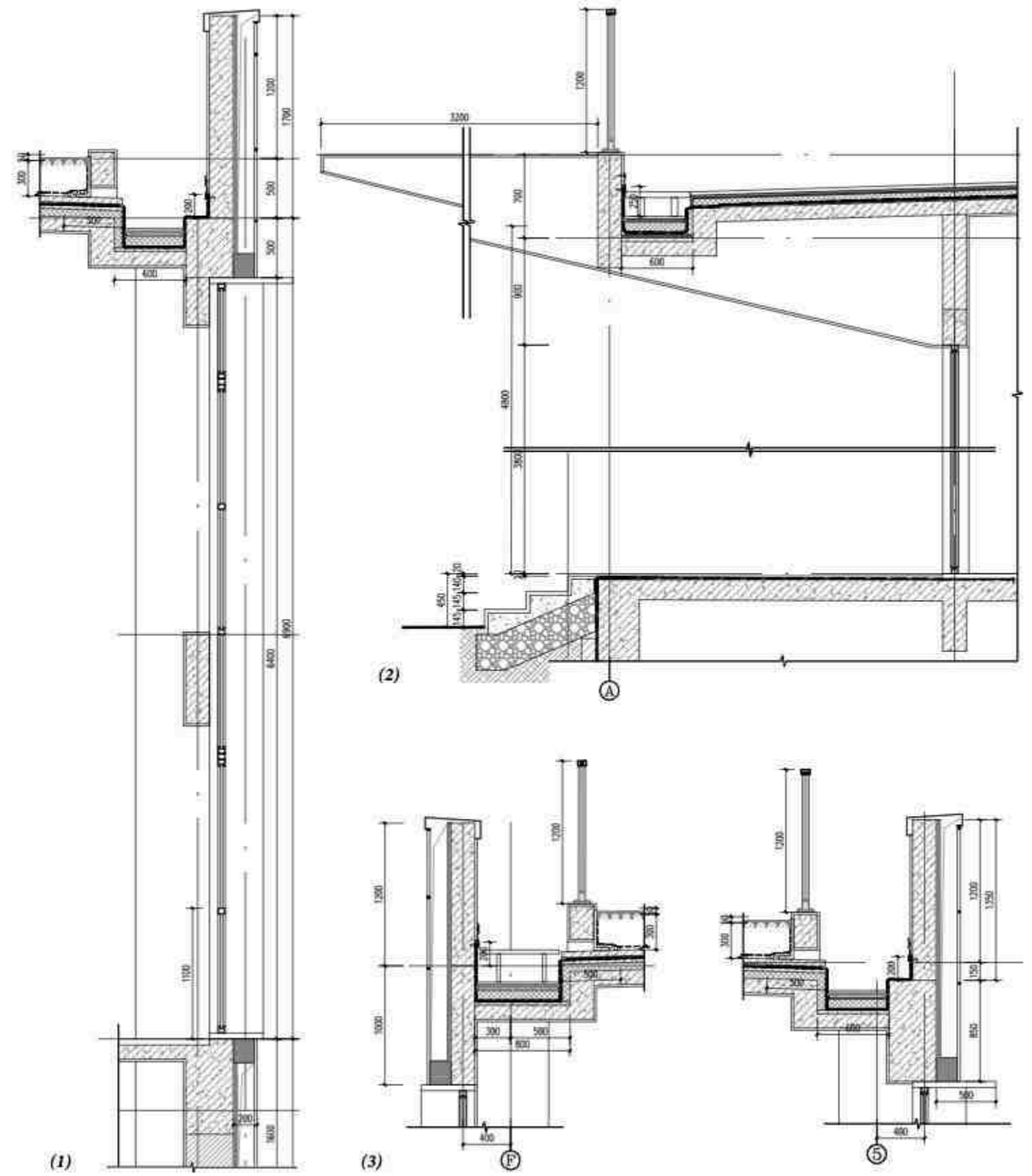
tainous landscape and creates great outdoor resting areas. Public spaces, including a library, coworking and rest spaces, laundry, and smoking rooms, are located at the edges of both buildings. The glazing opens up a view.



- 1. Entrance and Reception
- 2. Office Space
- 3. Theatre / Lecture Space
- 4. Private



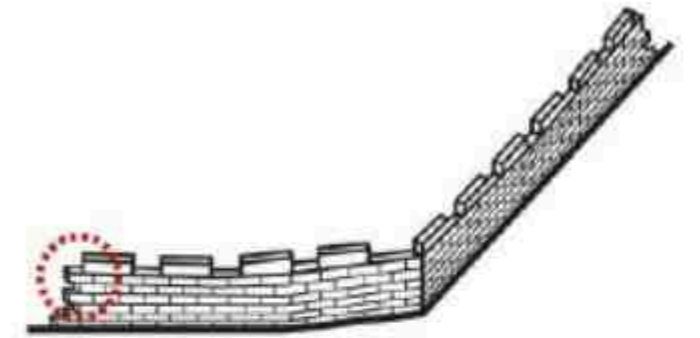
<b>C</b>	Name: <b>Nature Outdoor INC</b>	Year: <b>2022</b>
	Location: <b>Tiantai, China</b>	Progress: <b>In Construction</b>



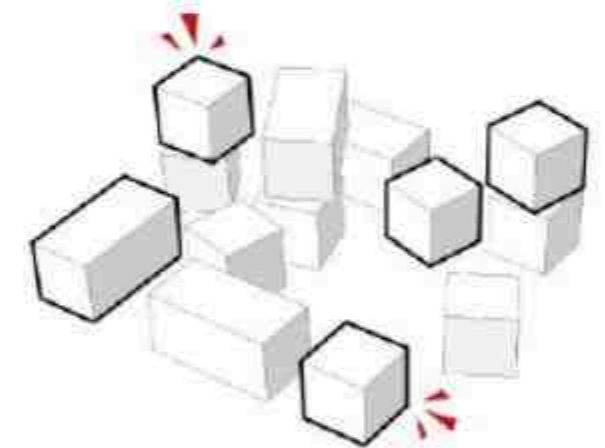


# HELONG ART

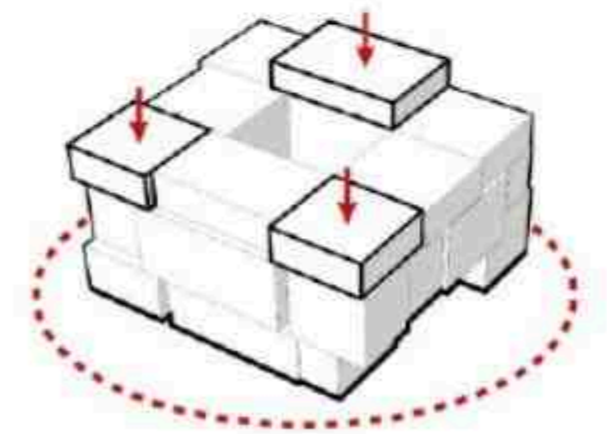
# GALLERY



Qingpu City Wall

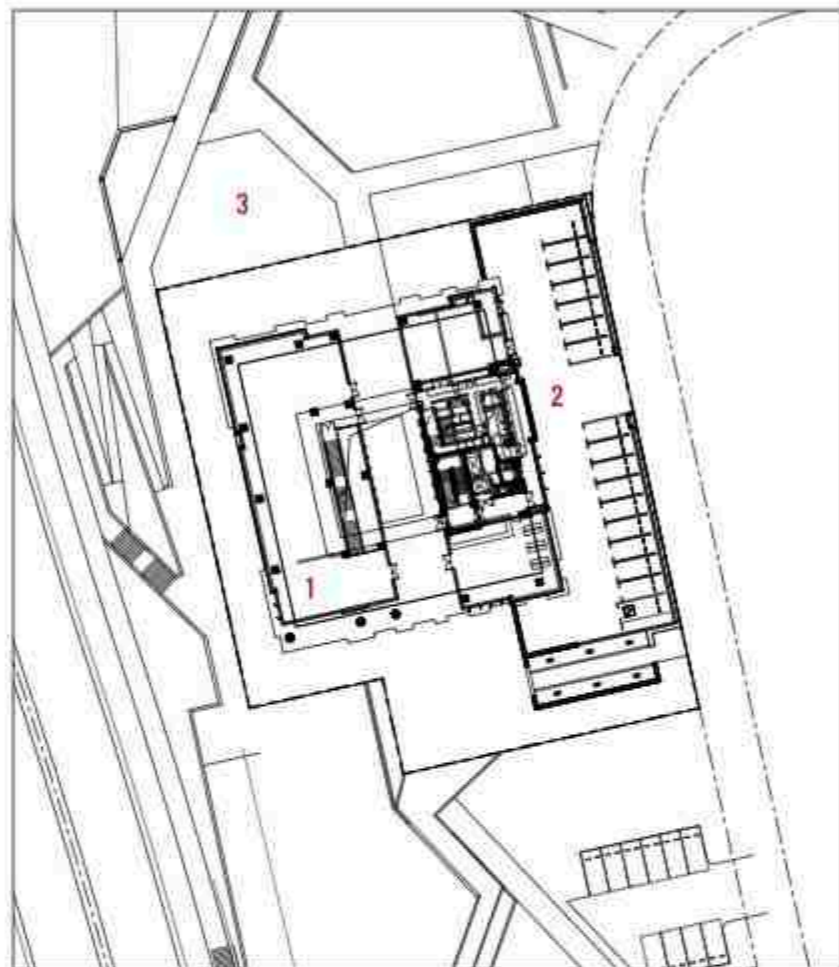


Block Unit



Volume Formation





(1)

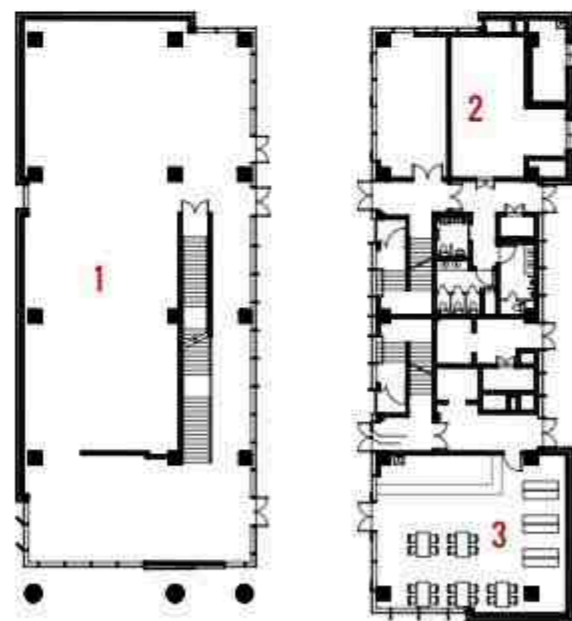
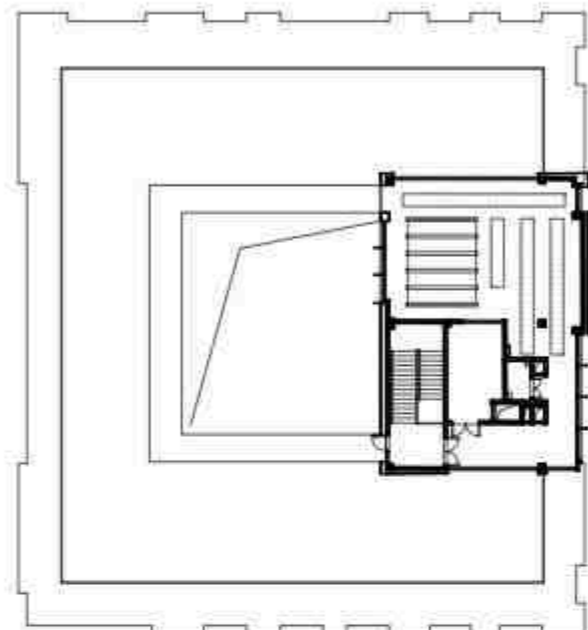
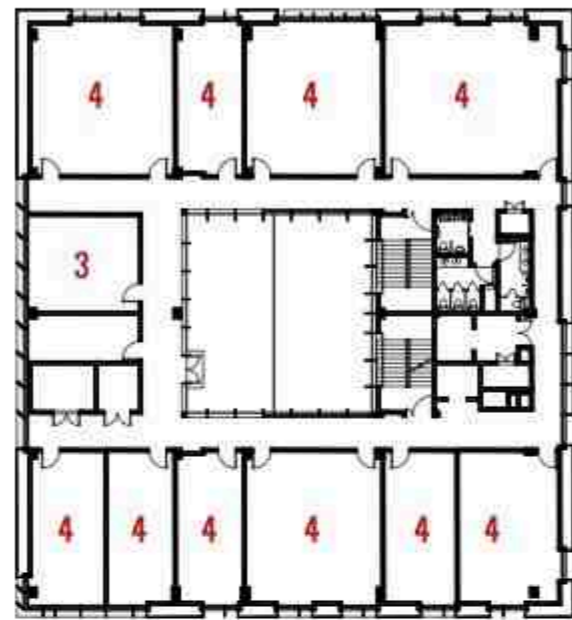
1. **Gallery Building**
2. **Parking**
3. **Public Park**

Helong Art Gallery is situated in the southeastern part of Qingpu Old City, with a park to the north of the plot. Towards the western side of the site, there is the Qingxi Ancient Pagoda Museum, featuring a recreated ancient pagoda that can be viewed from the gallery. The inspiration for the gallery's design came from the ancient city wall of Qingpu, which was demolished in the beginning of the century. Brick was taken as a block unit to form a simply shaped structure, as a reference to something that cannot be brought back. The design of the gallery has a box-shaped structure, which provides ample internal space, while the flexible floor plan allows for easy adaptation to various types of exhibitions.



1. Site plan

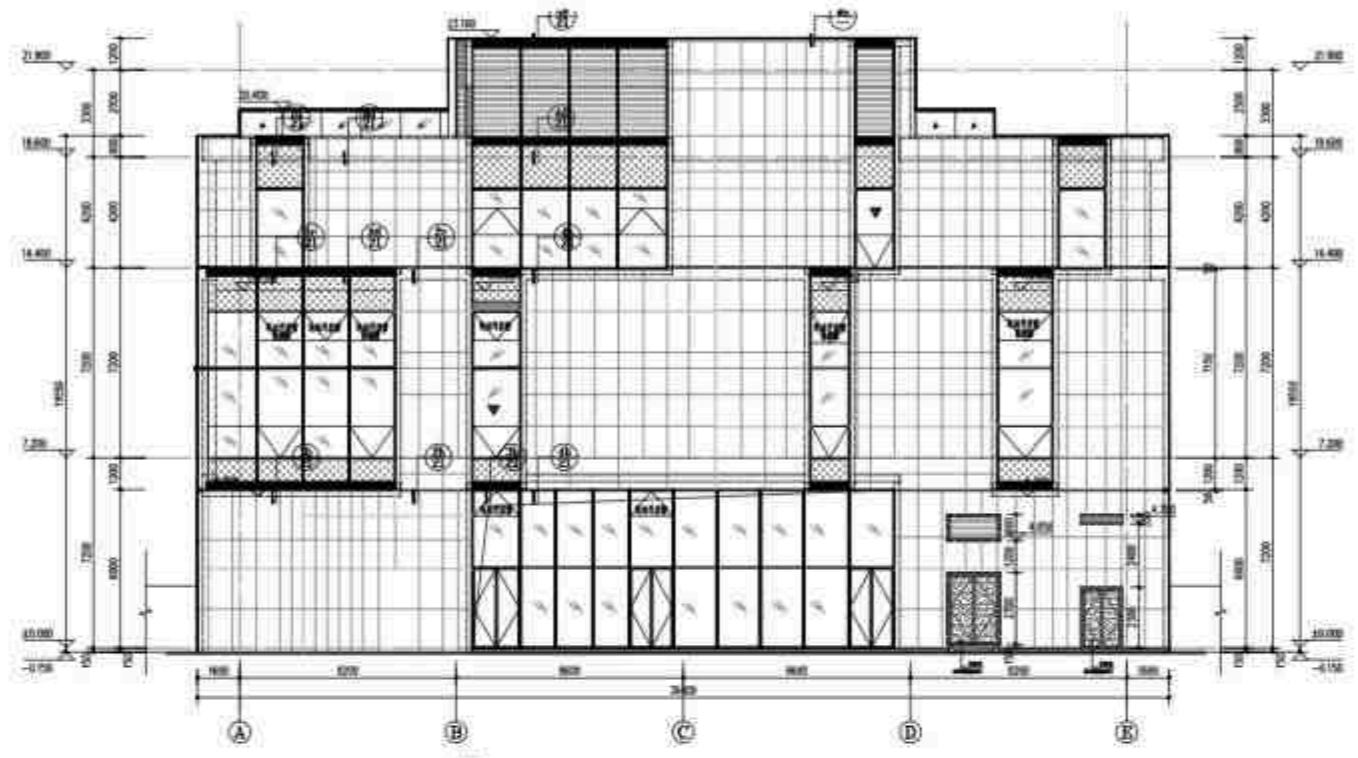




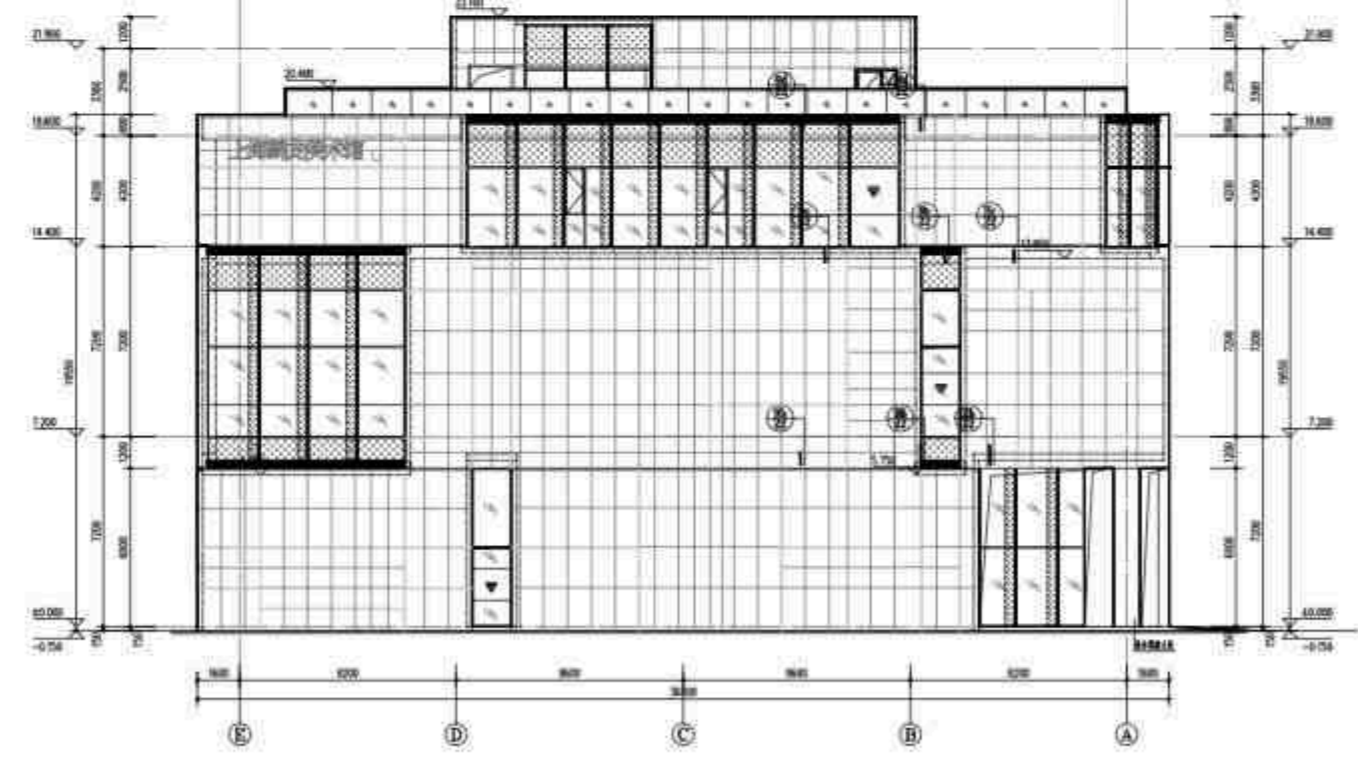
- 1. Exhibition Space
- 2. Private / Office
- 3. Cafe
- 4. Art Workshops

1. Ground floor    2. Second floor    3. Third floor    4. Roof plan

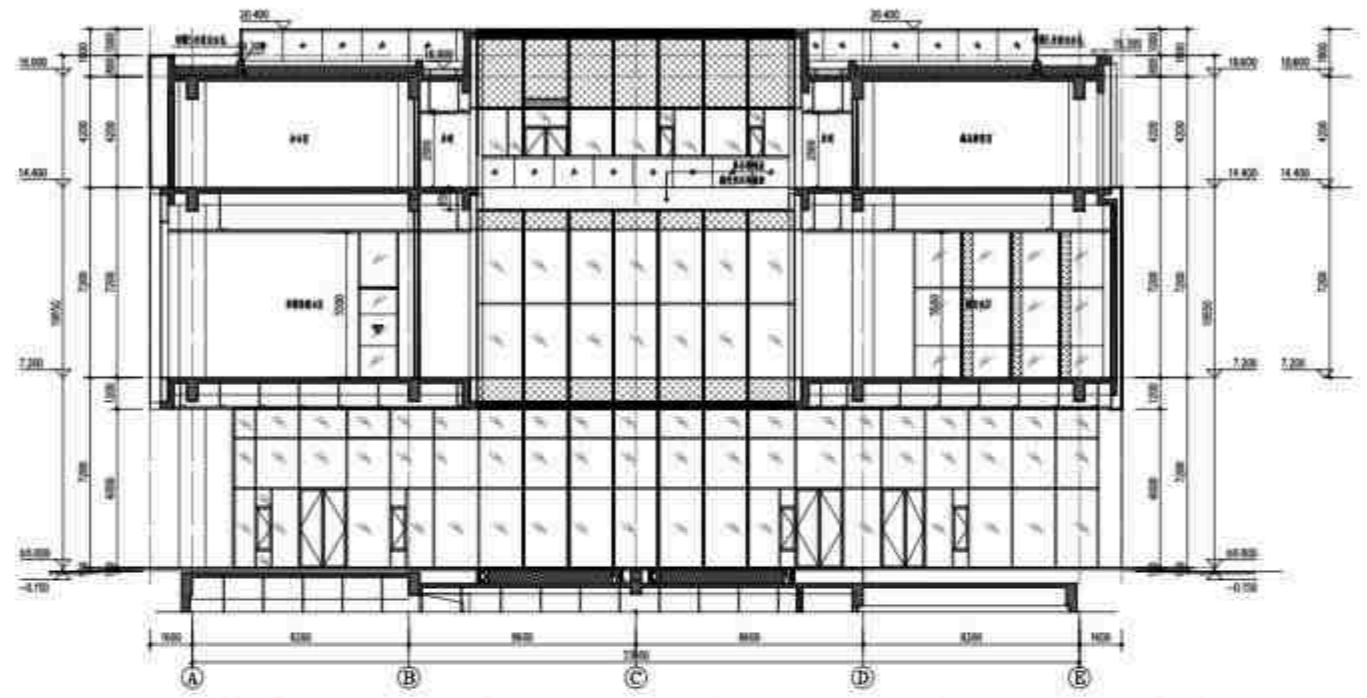




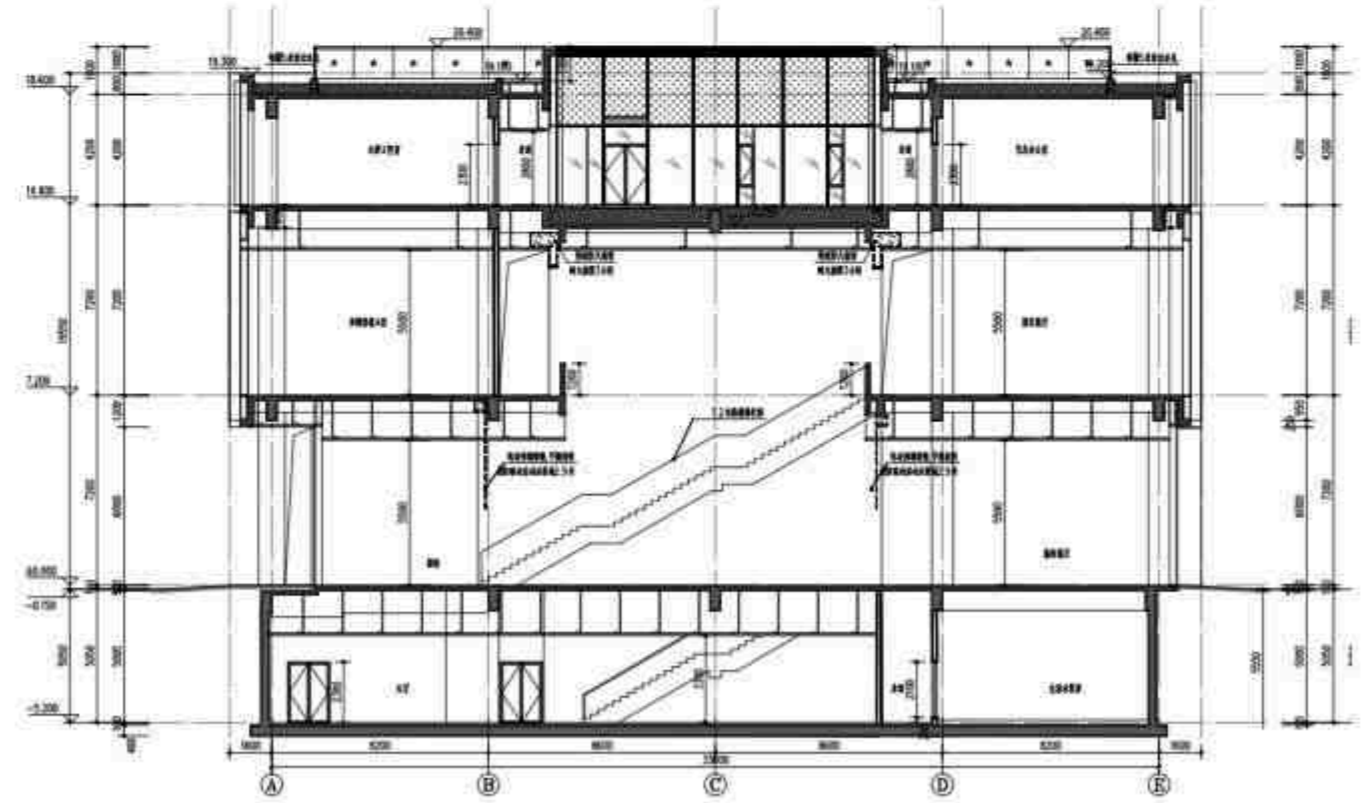
(1)



(2)



(3)



(4)

(1) Elevation 1-1

(2) Elevation 2-2

(3) Courtyard Section

(4) Public Stairs Section





**FRAMING**



**THE PAGODA**





*Interior View*





*Interior View*





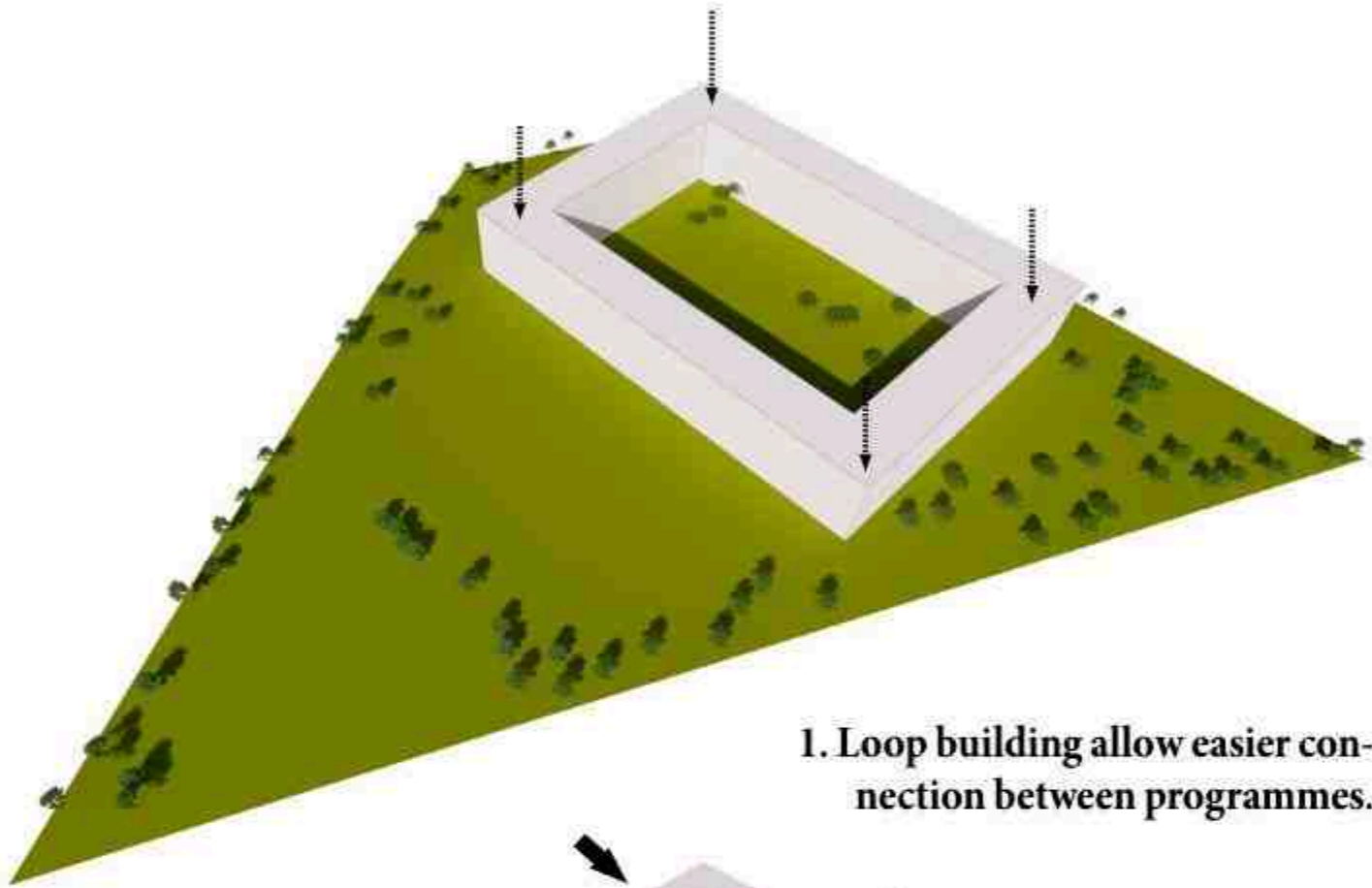
# QINGPU NEWTOWN PRIMARY SCHOOL

**POSSIBILITY TO LEARN, SHARE AND EXCHANGE KNOWLEDGE IN THE FLEXIBLE ENVIRONMENT**

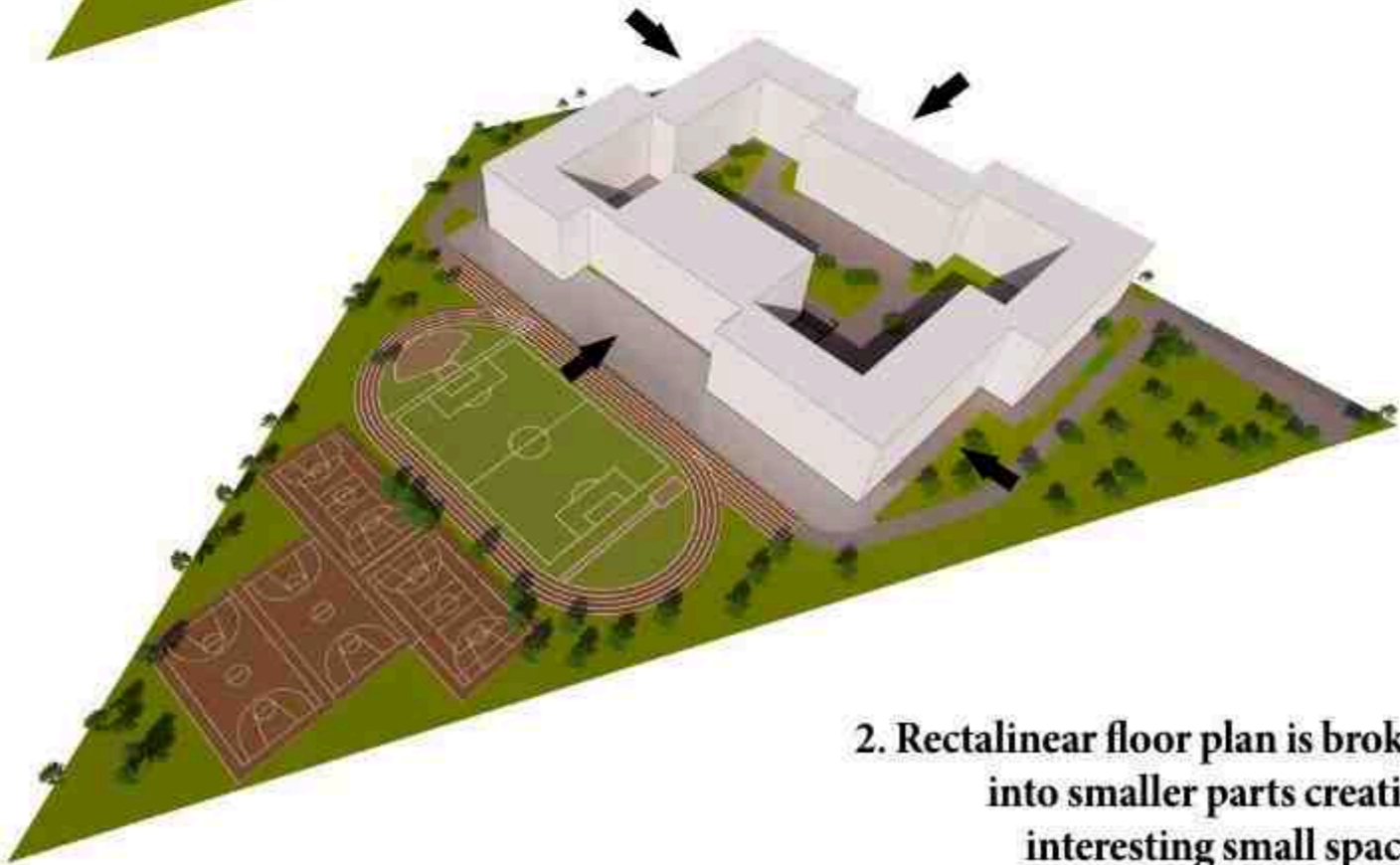
Qingpu Newtown 30-class primary school is located in the western part of Shanghai. The active loop connects all the public spaces, while the active corridor connects the street with the yard. The rectilinear floor plan is broken into smaller parts, creating a variety of breakout areas for small groups or individual activities. The western part of the school faces the sports field and is more active - large inviting stairs are located here, from where you can follow the sports match as well

as covered public zones, where students can spend their time between classes. The gym and theater are located in the middle of the playground, allowing for easier access and utilization. Overall, the layout of the school prioritizes the seamless integration of open and flexible classrooms, multipurpose spaces, and vibrant outdoor areas. Qingpu School's design is a space that inspires curiosity, supports diverse learning styles, and provides a safe and nurturing environment.

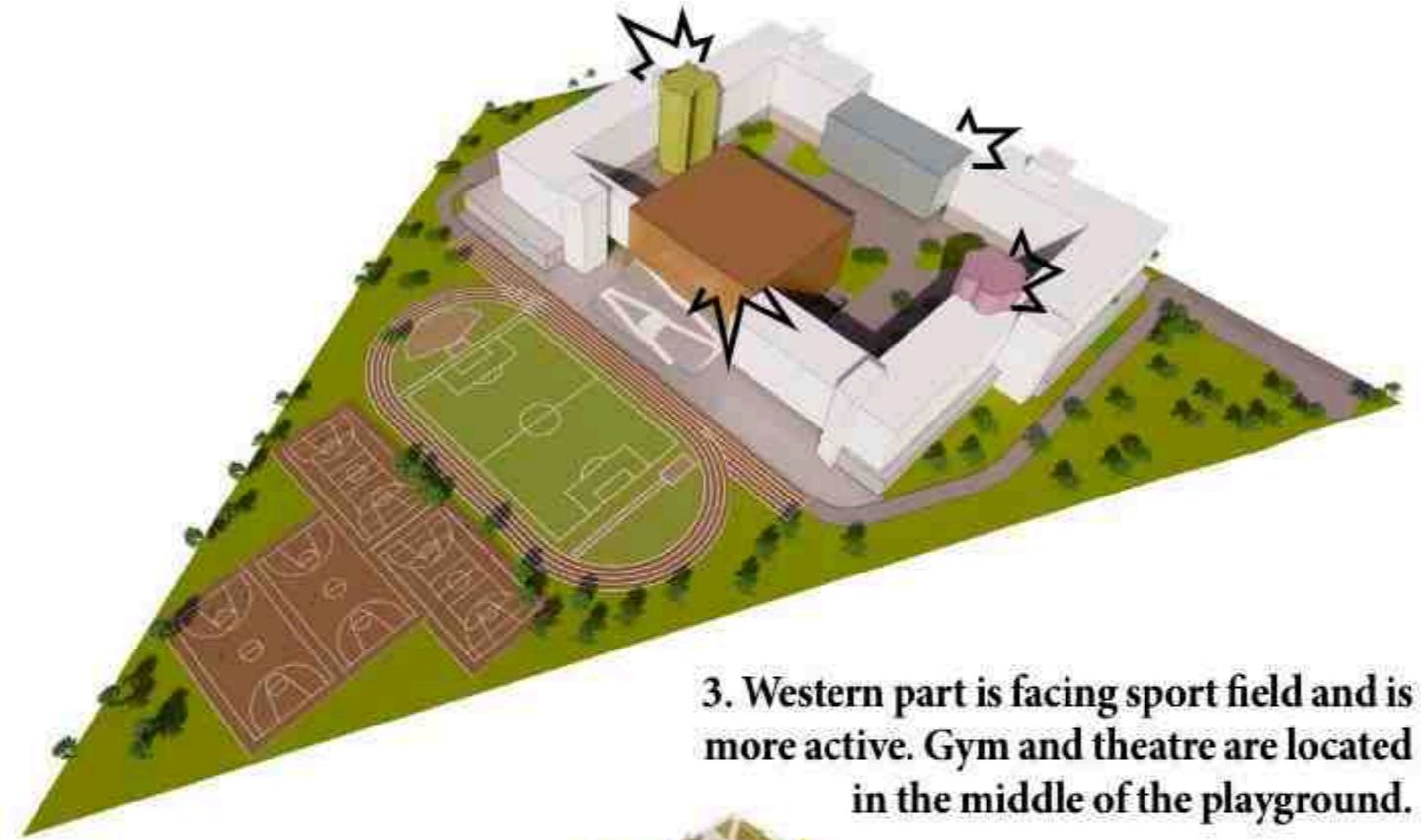




**1. Loop building allow easier connection between programmes.**



**2. Rectalinear floor plan is broken into smaller parts creating interesting small spaces.**



**3. Western part is facing sport field and is more active. Gym and theatre are located in the middle of the playground.**



**4. The vertical interface fully displays the rich scale changes, providing students with an interesting learning spaces**





# ONE BIG CONNECTED BUILDING, A THEATRE FULL OF SURPRISE

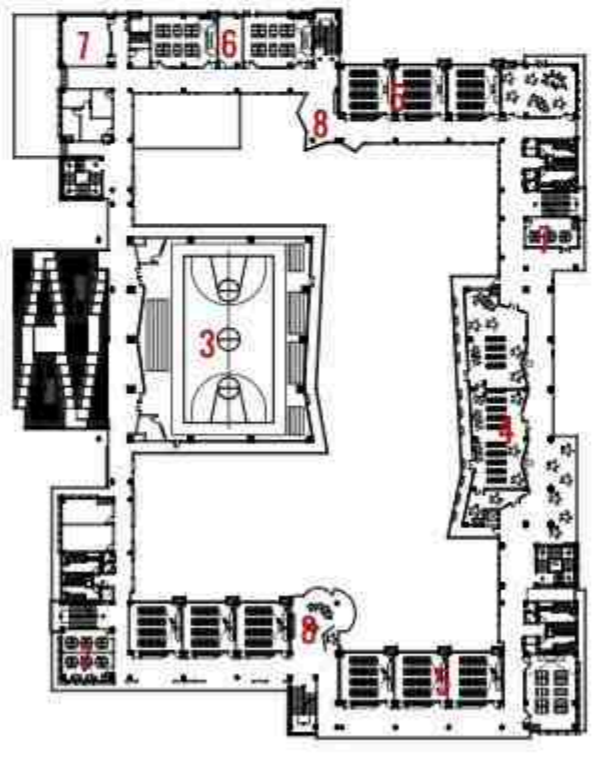
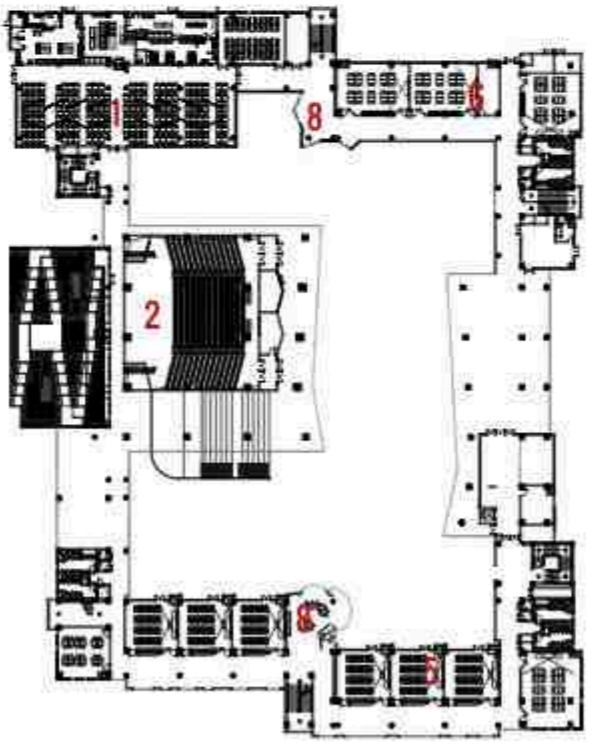
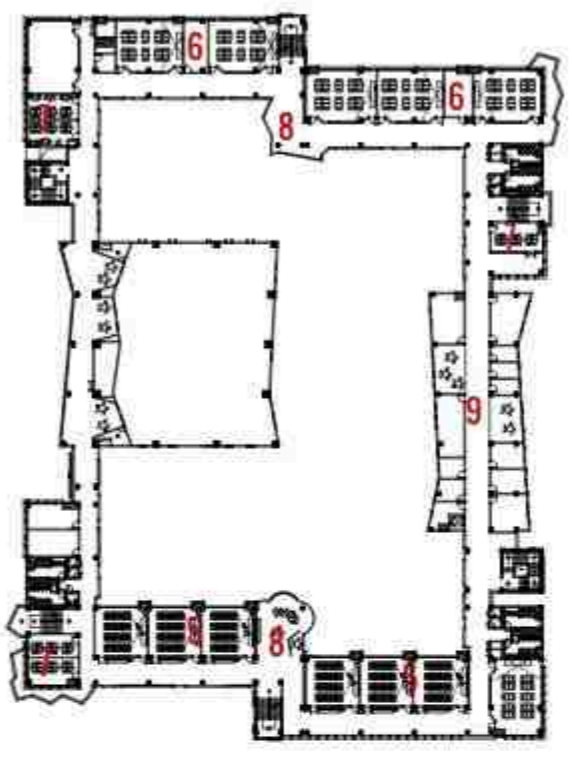
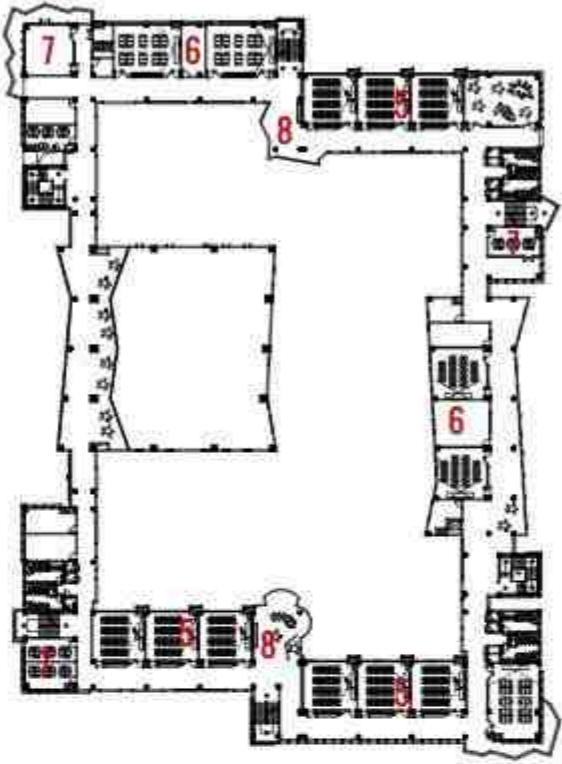


1. Cross section 1-1

(1)



<b>E</b>	Name: <b>Newtown 30-Class Primary School</b>	Year: <b>2021</b>
	Location: <b>Qingpu, China</b>	Progress: <b>In Construction</b>



(3)

(4)

(1)

(2)

- 1. Canteen
- 2. Theatre/ Lecture
- 3. Gym
- 4. Library
- 5. Regular Classes
- 6. Special Classes
- 7. Teacher's Classroom
- 8. Public Nook
- 9. Admin

1. Ground floor    2. Second floor    3. Third floor    4. Roof plan

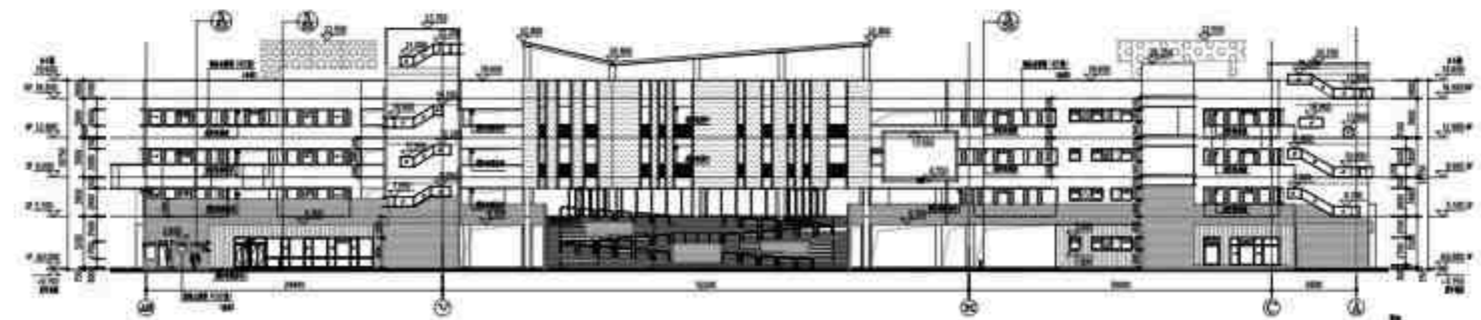
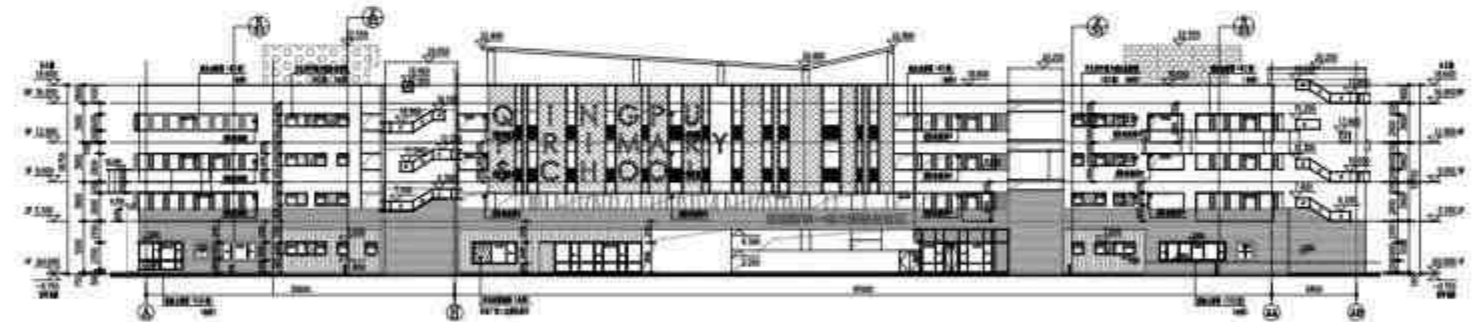
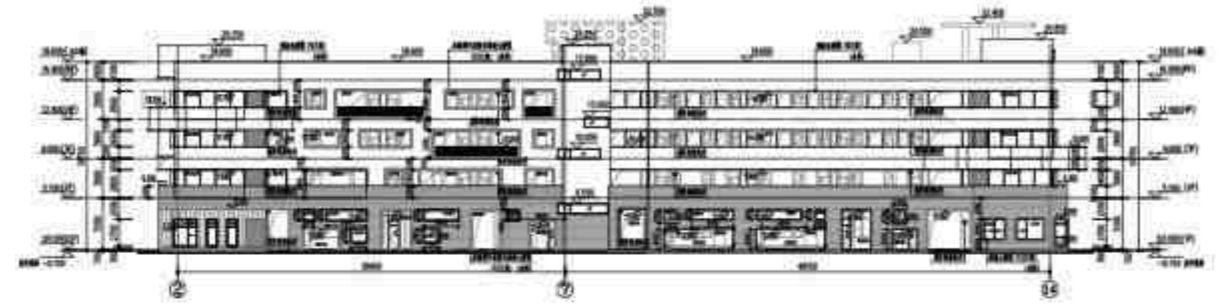
Building process



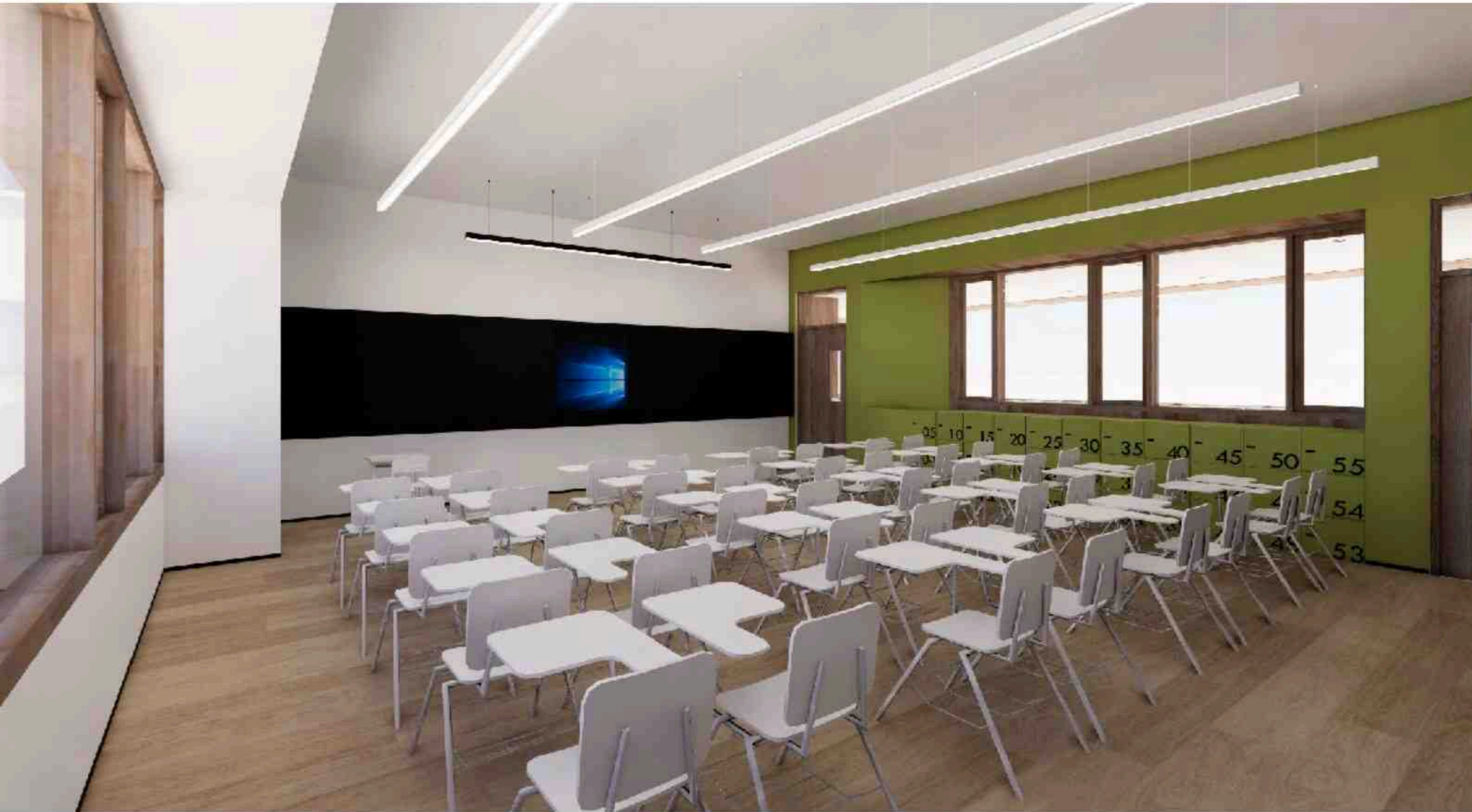
**E**

Name: **Newtown 30-Class Primary School**  
 Location: **Qingpu, China**

Year: **2021**  
 Progress: **In Construction**

**5**



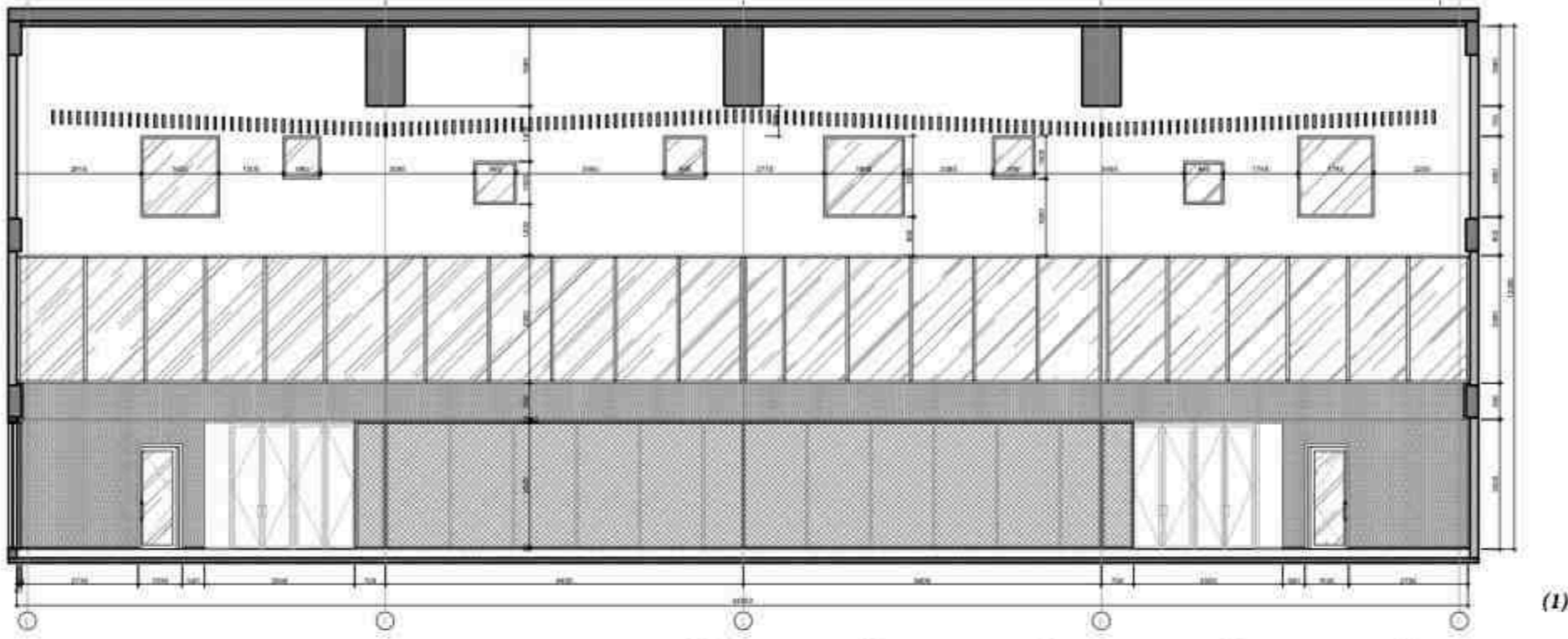




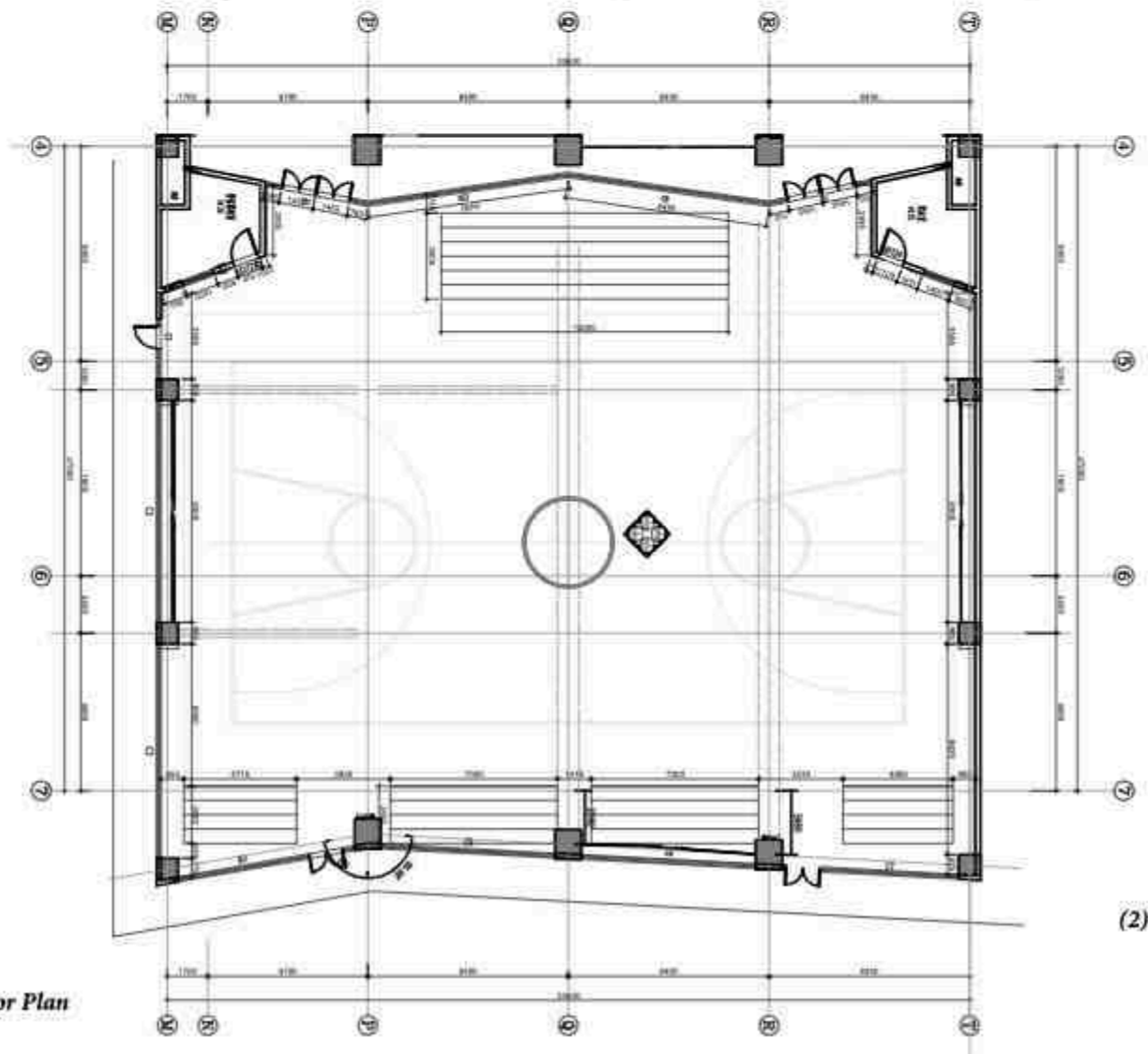


*Gym Interior View*

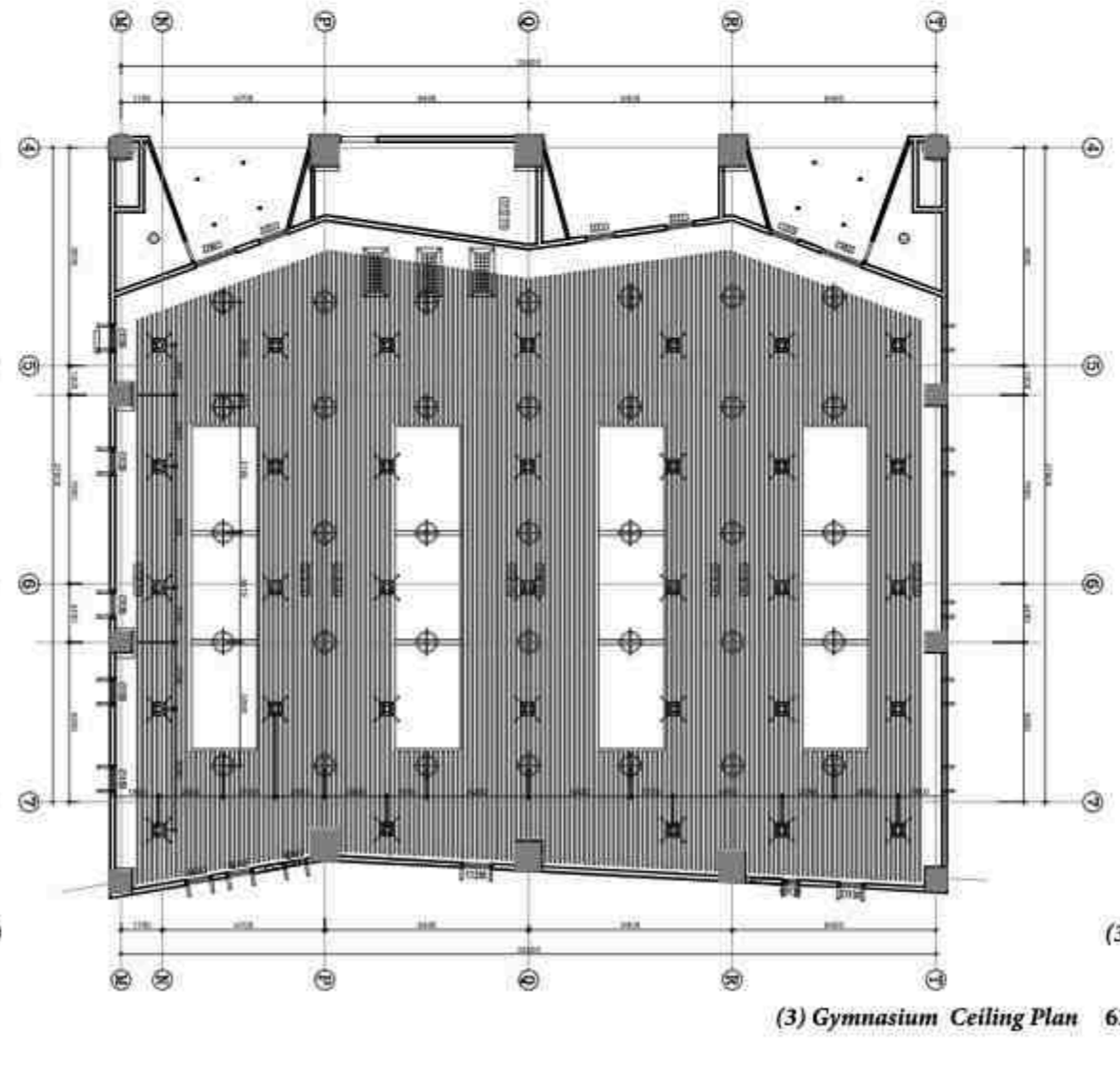




(1)



(2)



(3)



# GUANMING FOOD DESIGN COLLEGE A MODEL FOR CROSS-DISCIPLINARY COLLABORATION





<b>F</b>	Name: <b>Food Design College</b>	Year: <b>2020</b>
	Location: <b>Guanming, China</b>	Progress: <b>Concept</b>

	<b>2</b>
--	----------



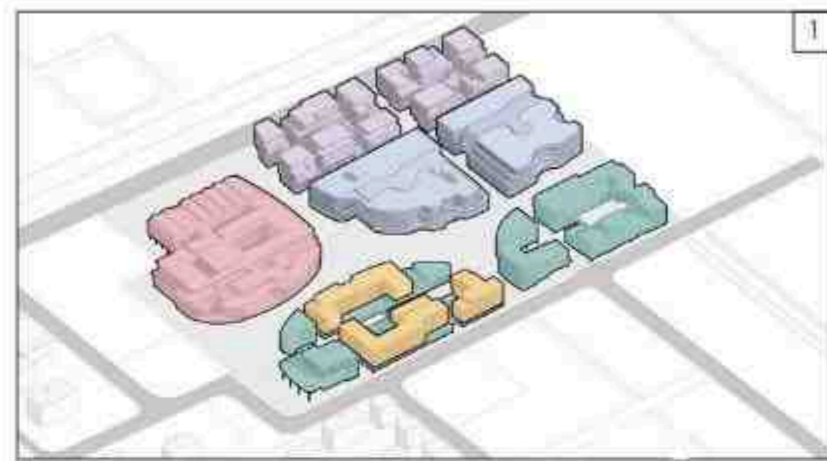
(1)

The project site is located on Chongming Island, 45km from central Shanghai. The project consists of four different function buildings - the School of Food Design, the Food Design and R&D, a mixed-use area and a supporting ser-

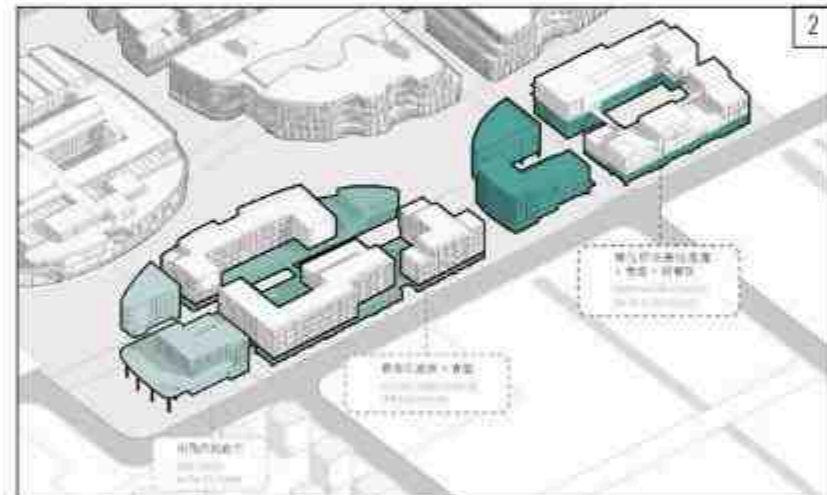
vice area. By designing public space on the ground floor level, the project aims to create an active, open learning cluster and an efficient learning space where inclusion is a goal. The project is rich in various informal spaces for co-learning,



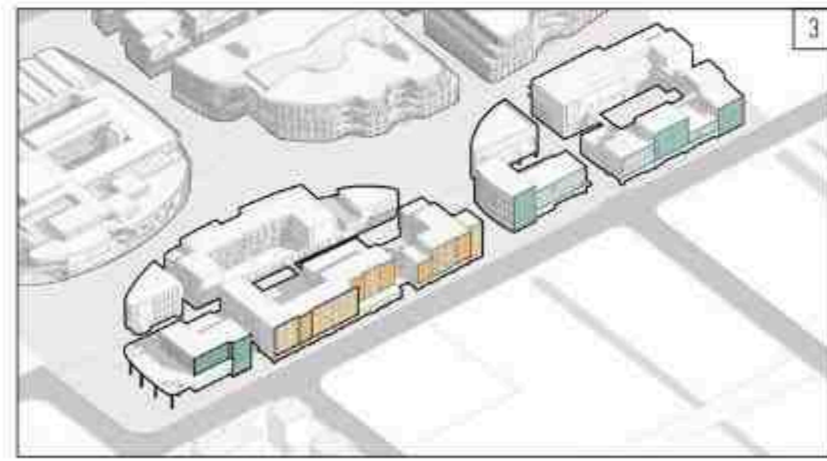
Site plan



- School of food design
- Villa office
- Mixed programmes: F&B, supermarket
- Food design R&D
- Supporting services



Food Street will extend from the city corner to the incubator on the East side, from active to quiet. The canteen, F&B, and supermarket will be located on the ground floor.



The southern facades along the street are broken down in scale. Different height volumes and use of varied materials are enriching the rhythm of the urban interface.

Programmes planning



# REIMAGINING THE FUTURE OF LIFESTYLE

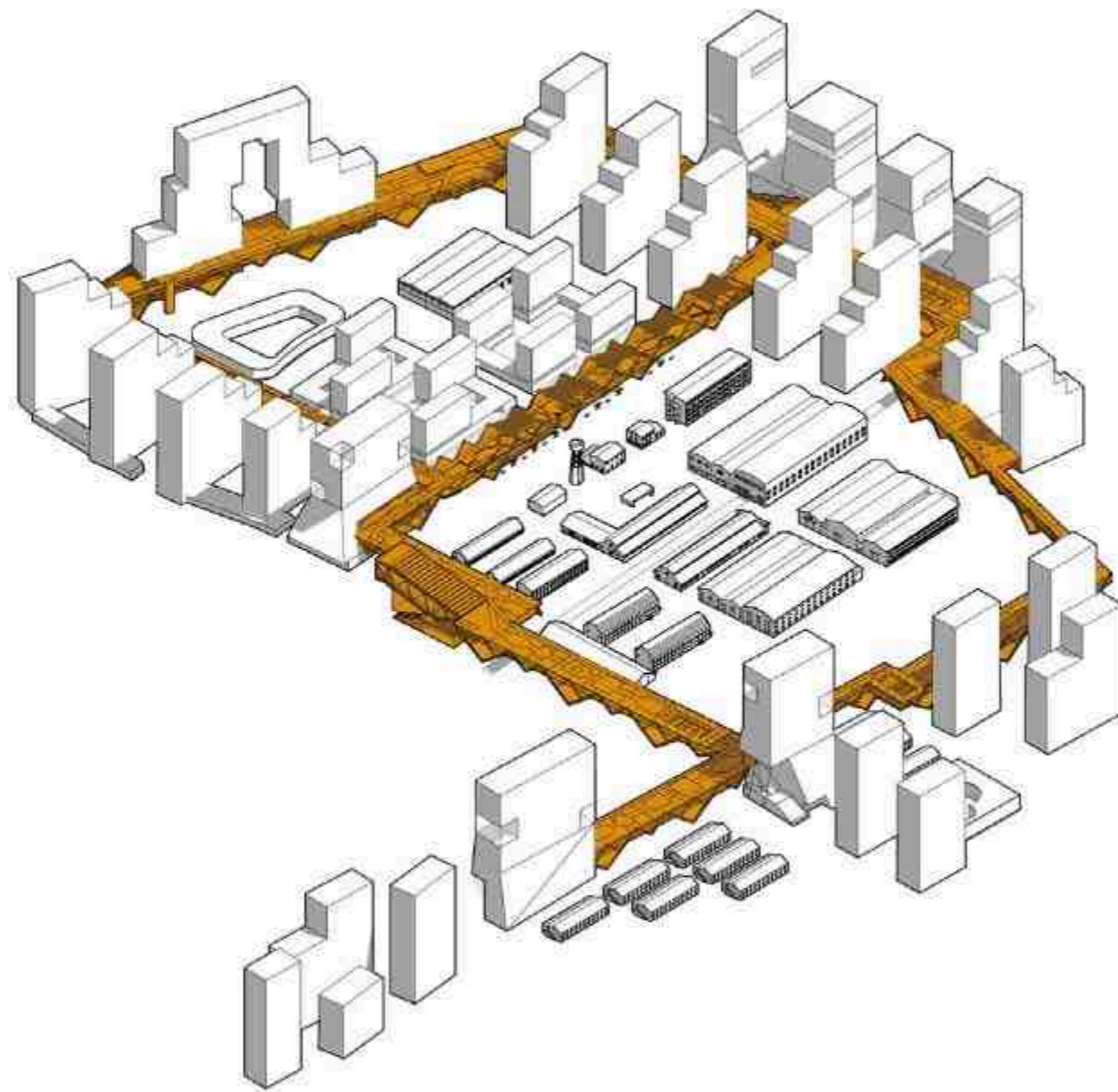




# A FUTURE COMMUNITY 'LOOP PARK' IN JIAXING



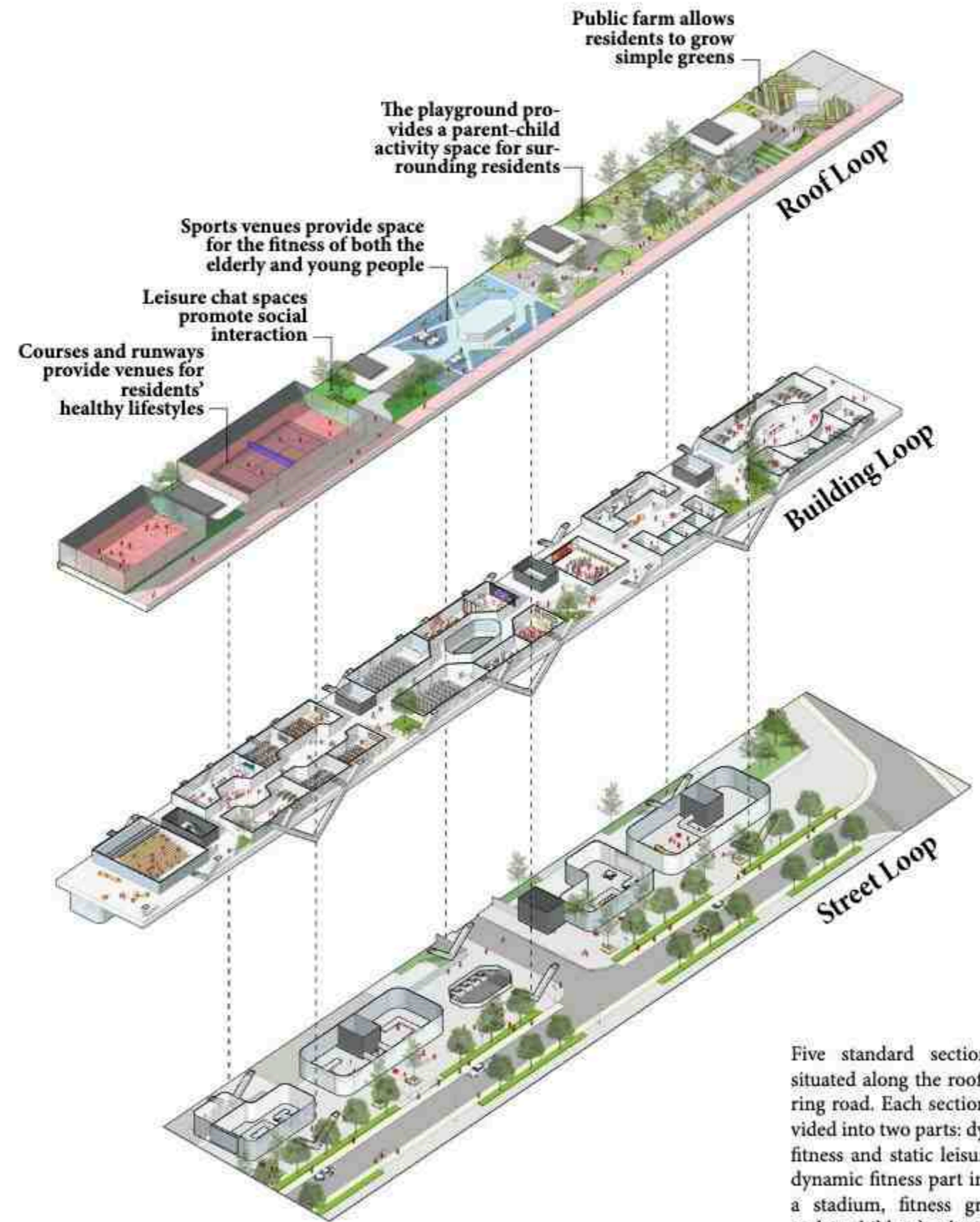




The project proposes twelve community blocks, resulting in a network of small roads and pedestrian paths. This design creates a convenient and human-scaled urban environment where public and commercial programs can flourish in attractive surroundings. The name "Loop Park"

comes from the proposed community services bridge building that loops around the site, connecting all parts. The project focuses on residential, public, educational, and service building programs as its main components.

*Schematic loop view*



Five standard sections are situated along the roof of the ring road. Each section is divided into two parts: dynamic fitness and static leisure. The dynamic fitness part includes a stadium, fitness grounds, and a children's playground. The static leisure part mainly consists of spaces for leisure and neighborly interactions.

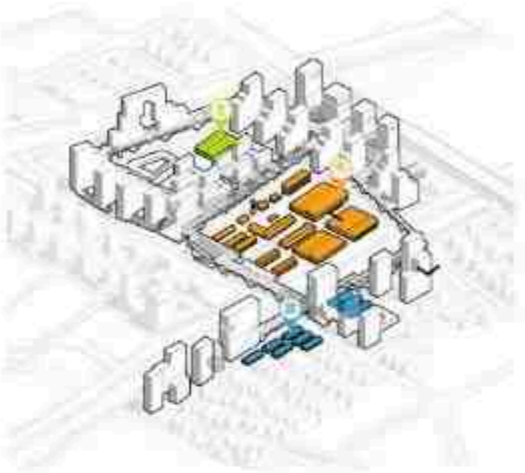
*Loop scheme and programmes*



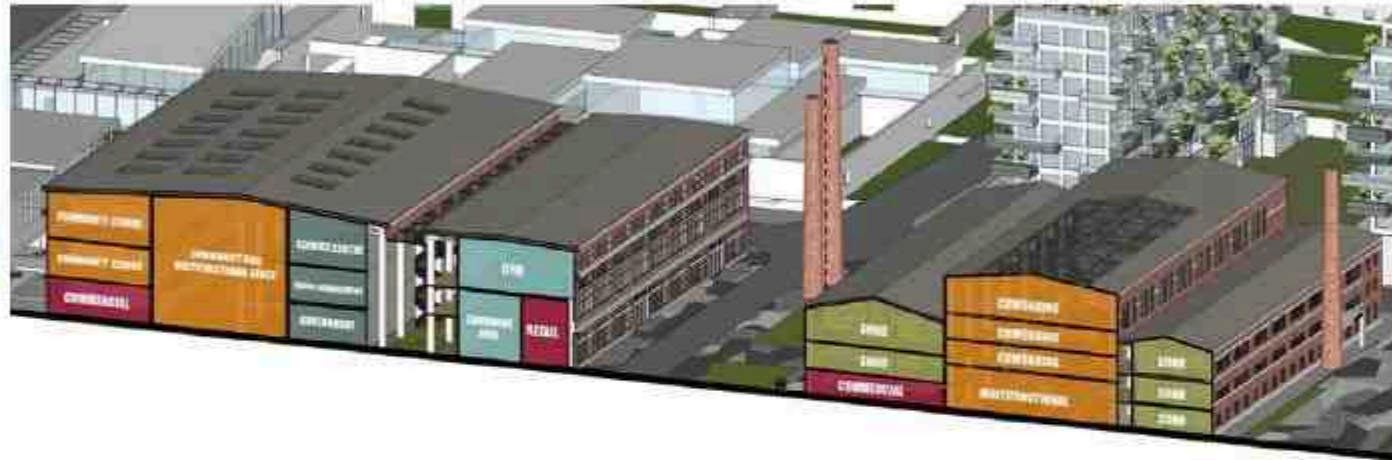
# REIMAGINING THE FUTURE OF COMMUNITY







Loop Park is part of Zhejiang Province's new wave of progressive urban projects known as Future Communities. Unlike the Chinese developments of the past thirty years, this vision aims to create a more traditional scale of urbanity where all occupants can share amenities.



<< Public courtyard

Renovation area cross section



Keep one of the red-brick buildings and transform it into a market. The rest of them will be demolished, aligning with the principles of sustainable development and catering to the needs of a high-density population.



The preserved buildings in the southern site will be transformed into commercial spaces related to culture and creativity. New vitality will be infused into the historical features.



The gray-brick buildings in the northern site will be preserved and transformed into warehouse offices, forming a creative city zone in the center.



**AIM FOR SUSTAINABILITY,  
RENOVATE FOR THE  
COMMUNITY**







# BAU



Moss Scientist Village supporting construction, China, 2023



Wuxi Grand Canal Science and Innovation Cultural Centre, China, 2023



Shanghai Jingqiao No. 25 Plot Reconstruction and Expansion Concept, China, 2022



Dingjinghe River Communities in Kunshan, China, 2021



#4 Science City Valley Junior High School, China, 2022



Shanghai Yeju Primary School, China, 2021



Qingpu City Water System Landscape Comprehensive Improvement, China, 2023



Tianfeng Times Square Concept Design, China, 2022



Jiangsu Suzhou Farm House Design Competition, China, 2021

# TEN 十间建筑



Restrooms and Public Zones, Suining, China, 2017



Sales Centre, Chengdu, China, 2018



Erxiangqiao Primary School, Chengdu, China, 2017



#3 Kindergarten, Chongdu, China, 2016



Hedong New District Kindergarten, Suining, China, 2023



Traditional Chinese Medicine Park, Pixian, China, 2017



Community Centre Competition, Korea, 2018



Restaurant near the River, China, 2016





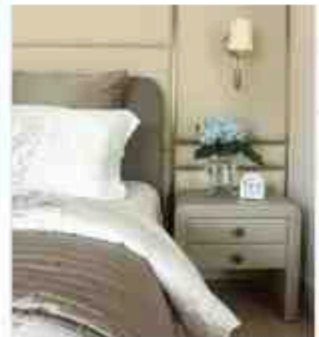
# 圣橡树



Repulse Bay Villa,  
Chengdu, China, 2019-2020



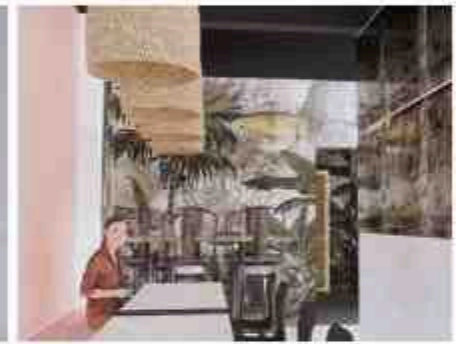
Apartment in the building 18,  
Chengdu, China, 2019



Mumashang Villa,  
Chengdu, China, 2019

Apartment 8th Floor,  
Chengdu, China, 2019

## Other Interior Projects



Cafe 'Ketch' Concept Design,  
Bangkok, Thailand, 2022



Rotisserie restaurant 'Coucou',  
Chengdu, China, 2023



Rotisserie restaurant 'Coucou',  
Chengdu, China, 2021

Amber Palace, Indian Restaurant,  
Chengdu, China, 2018



