



# PORT FOLIO



PITCHA BUKKAVESA

FORMER FAÇADE DESIGN ENGINEER





# PITCHA BUKKAVESA

---

## CAREER PATH

- June 2018 : Graduated from Chulalongkorn University ( Civil engineering )
- July 2018 : Started working as façade design engineer
- September 2018 : THE PARQ project ( curtain wall and glass design )
- February 2019 : THE STRAND project ( curtain wall and glass design )

- Façade is one of the most suspicious word among the engineers

Actually Façade means Shell where exterior from part of the building .

Façade can describe owner's identity to show the most unique things out of owner's characteristic .

- And What about Façade design engineer ?

They are a group of people seeking for new technique and new calculation to make creative design possible .

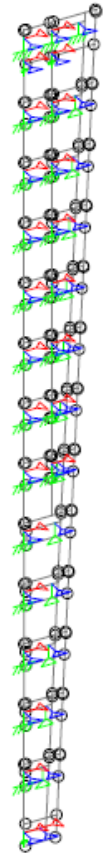
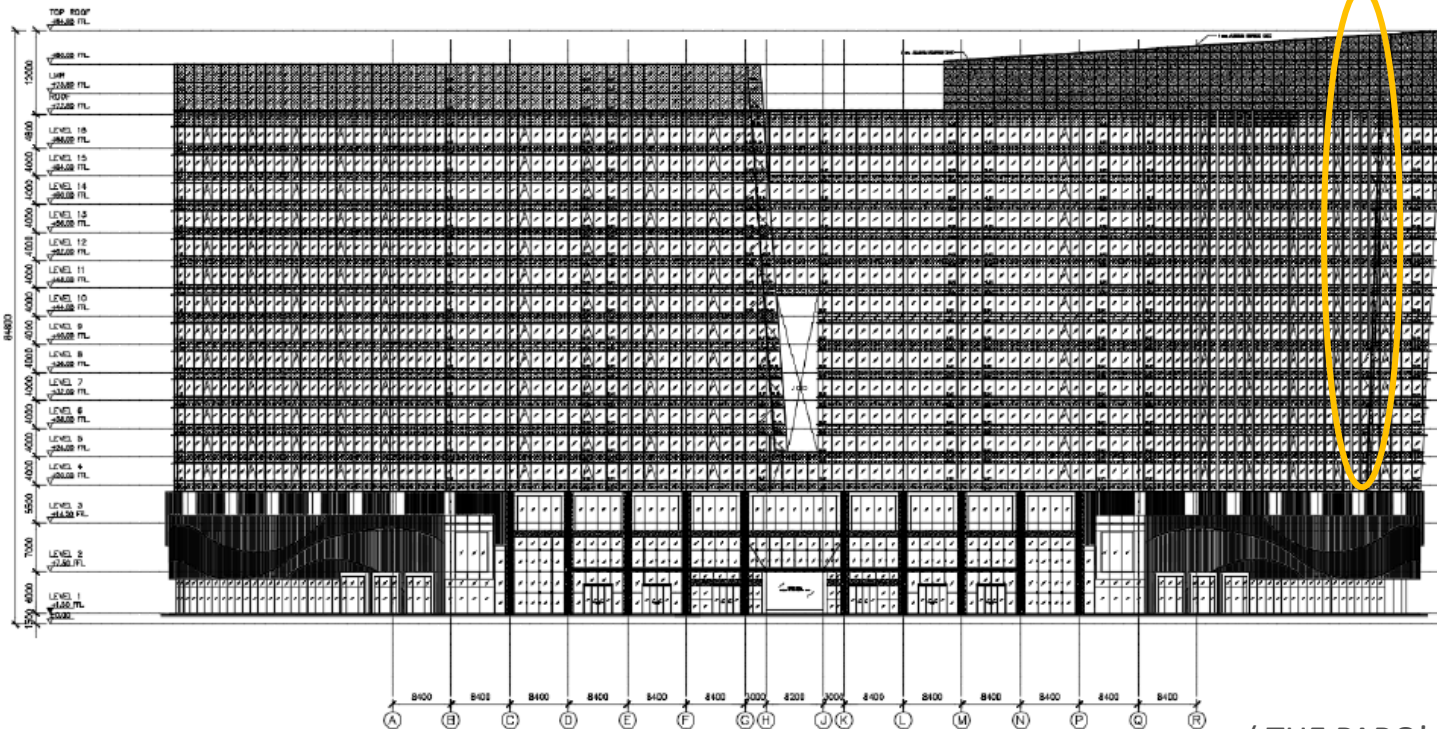


WHAT  
FAÇADE  
ACTUALLY  
IS ?

# MODEL OF CURTAIN WALL

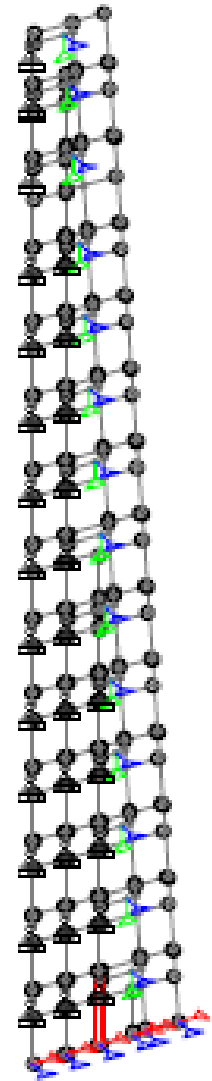
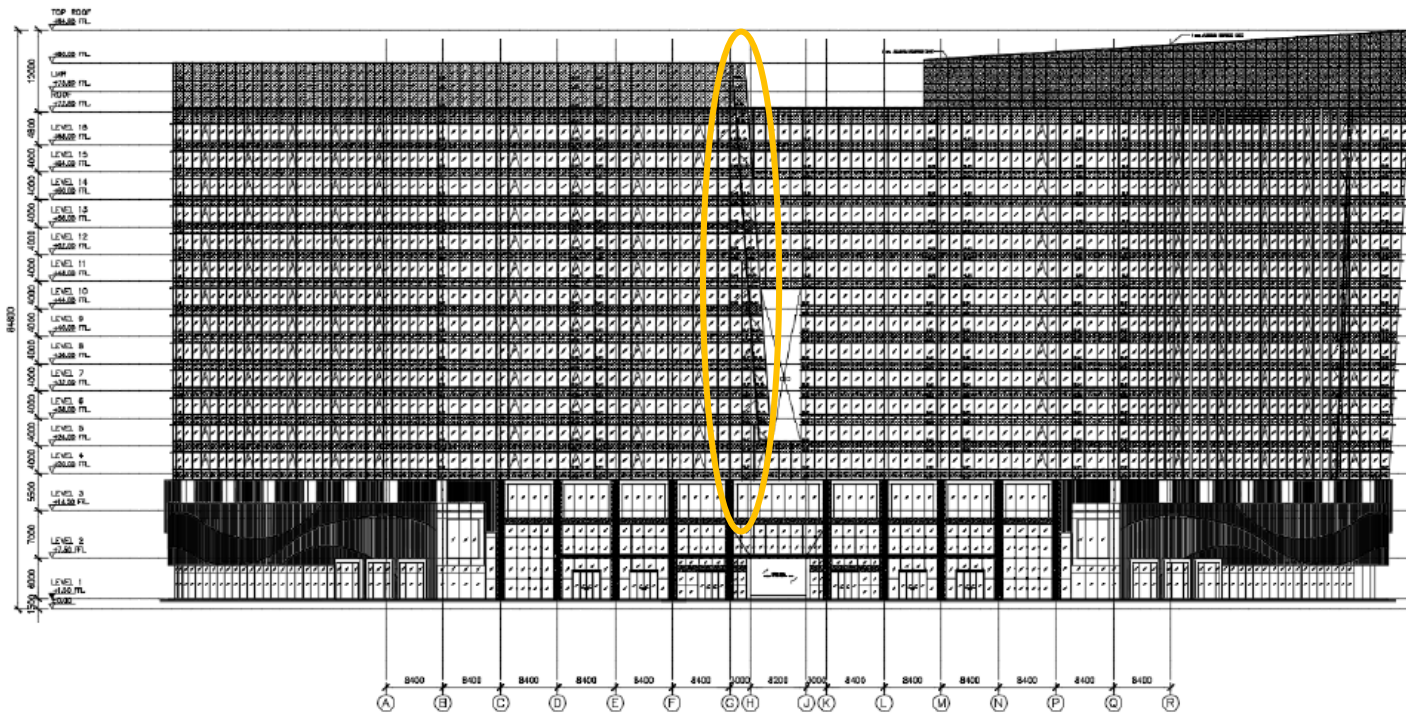
FROM : STAADPRO PROGRAMME

The PARQ is a mixed-use development composed of offices and modern retail. Located on area 320000 square meters near Queen Sirikit national convention hall , the PARQ is outstanding building with different type of façade works such as sunshade , fin and wing curtain wall which extending out of the building



( THE PARQ'S WING FIN MODEL )

FROM : STAADPRO PROGRAMME

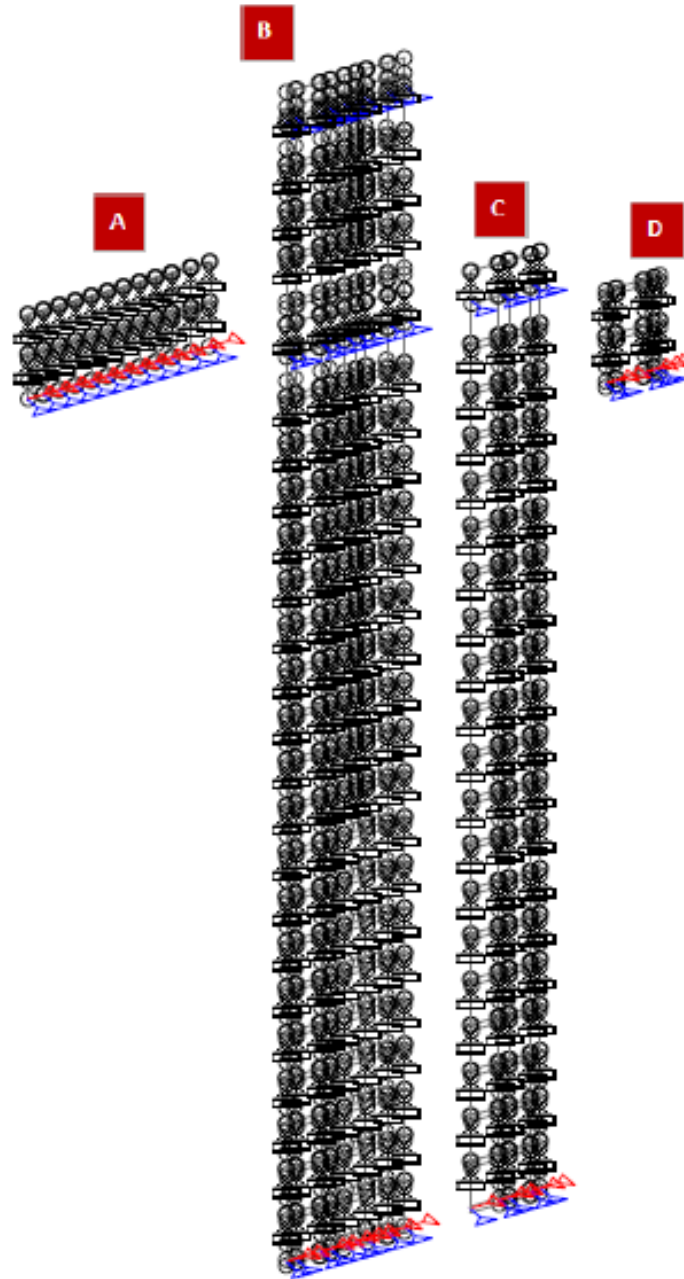


( THE PARQ 's SUNSHADE WING MODEL )



FROM : STAADPRO PROGRAMME

The strand thonglor is mixed-use development with public space in podium and residence in tower .however there are many sizes of glass panel and to solve this problem . It's necessary to split model into 4 types as show .

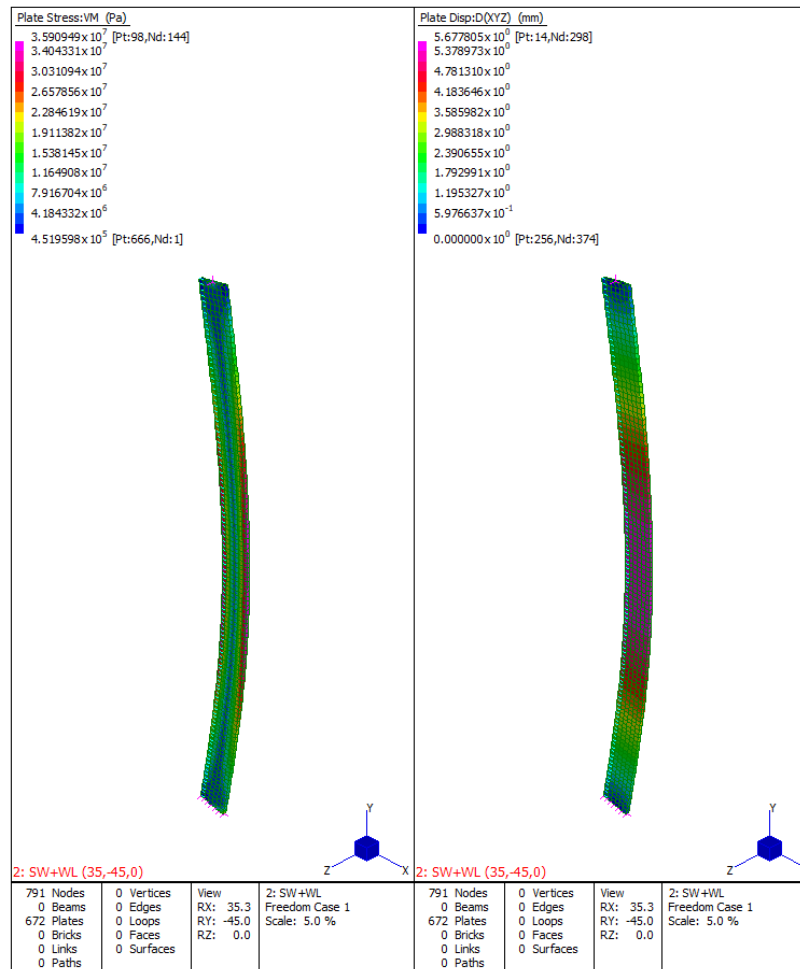


( THE STRAND'S CURTAIN WALL MODEL )

# MODEL OF GLASSES

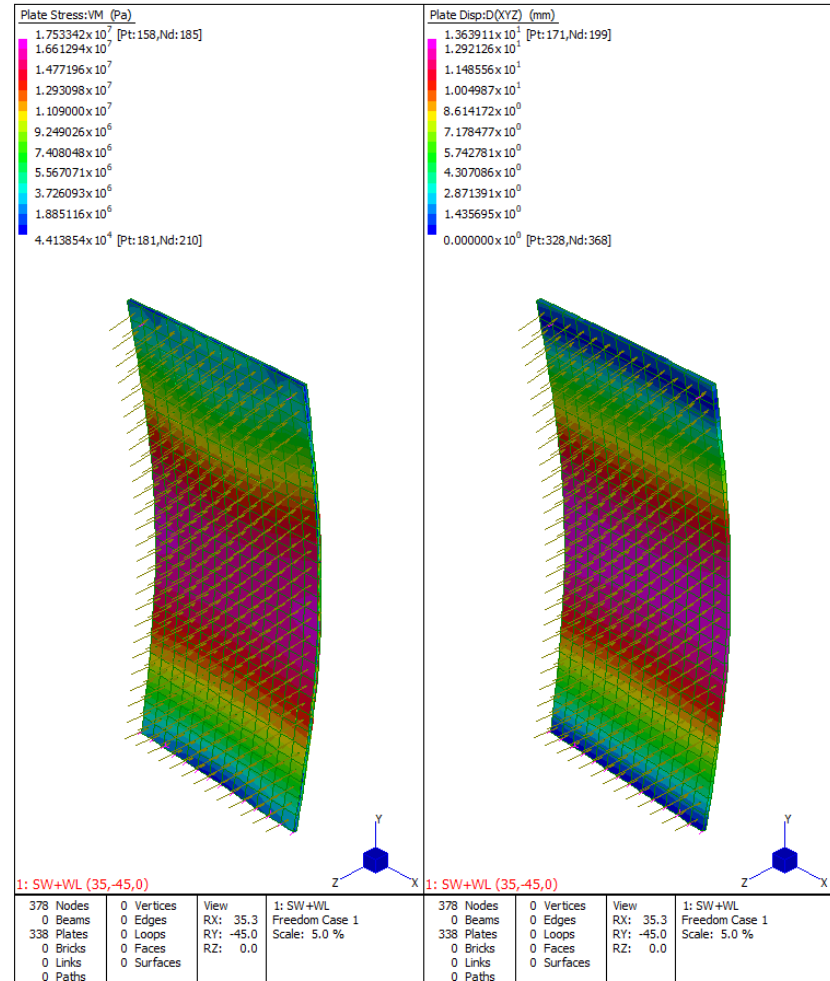
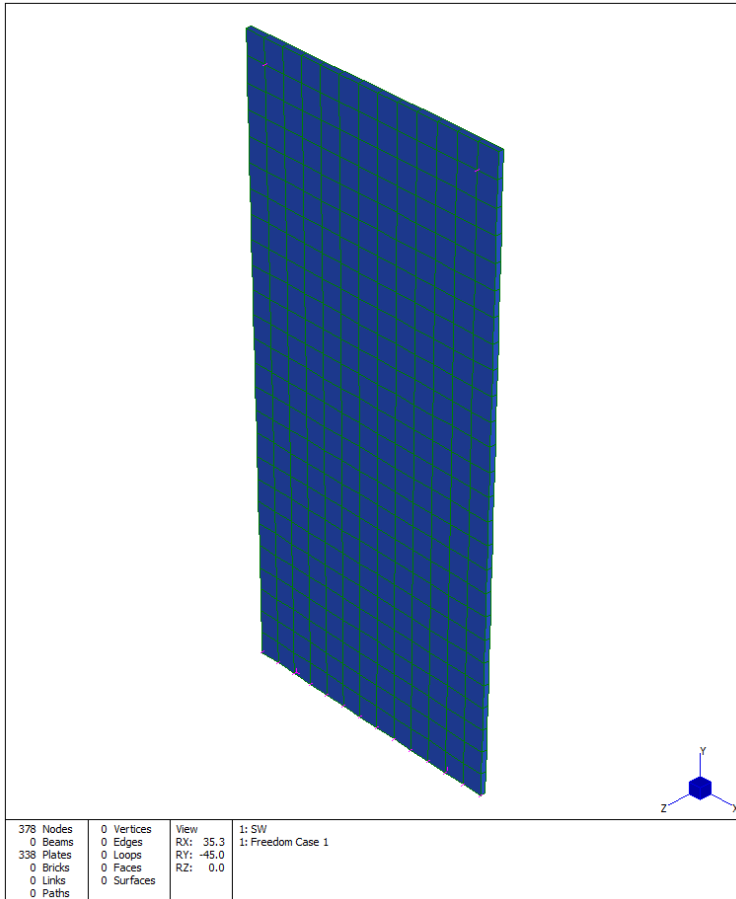
FROM : STRAND7 PROGRAMME

- Rib glass



- 2 floor face glass with spider

FROM : STRAND7 PROGRAMME



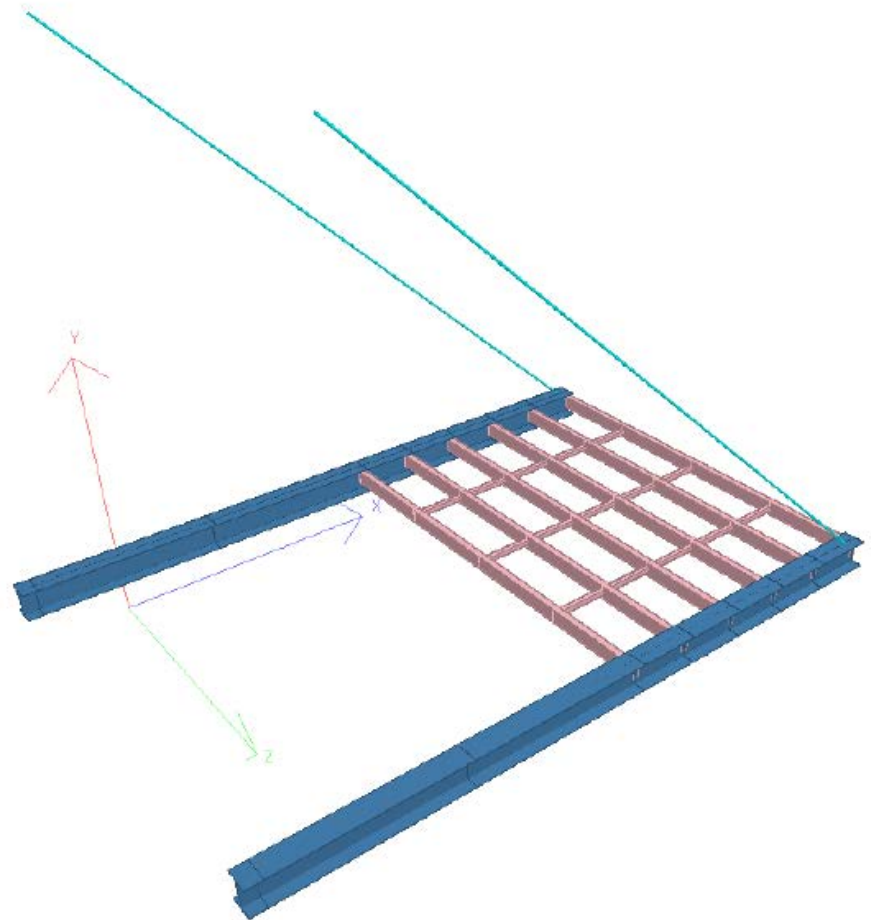


# MODEL OF STEEL

---

- PLATFORM

( FROM : STAADPRO PROGRAMME )



# • TRUSS

( FROM : STAADPRO PROGRAMME )

