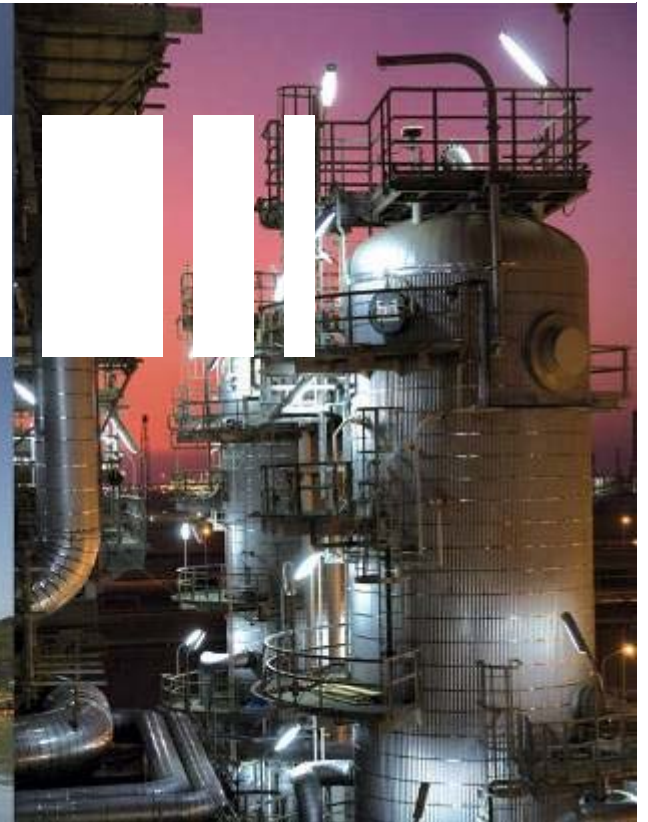


# Work Portfolio



Mr. Theradej Litsomboon

# Aibel (Thailand) Senior Structure Engineer I

## Highlight Project

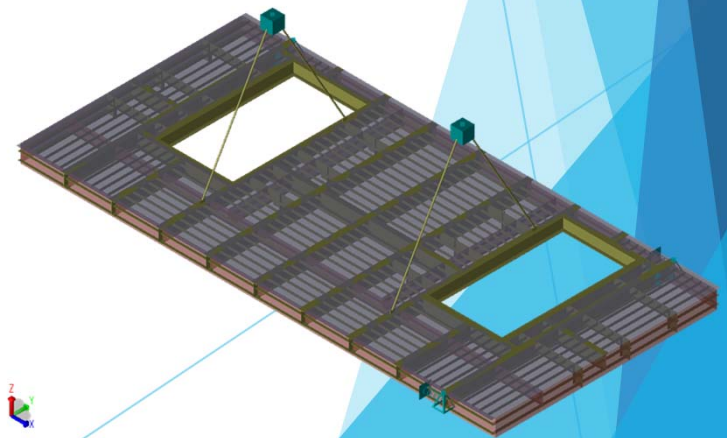
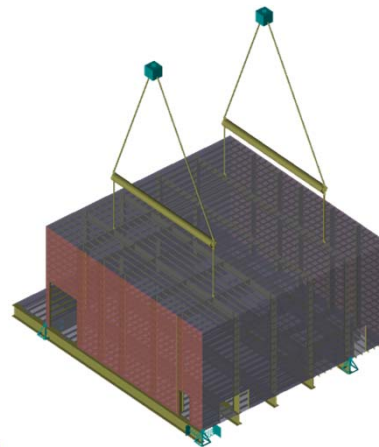
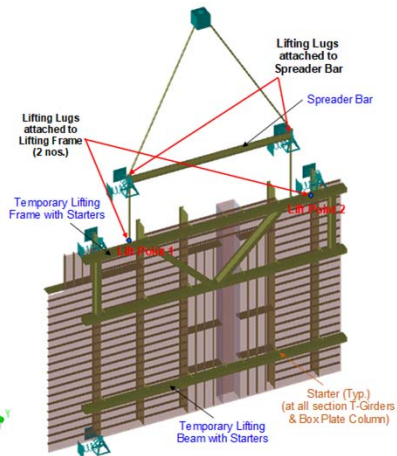
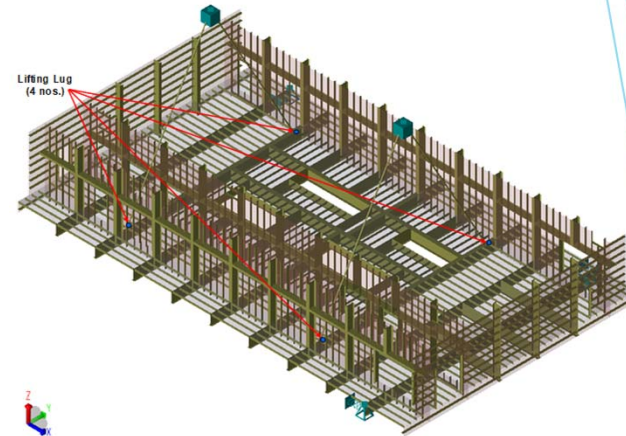
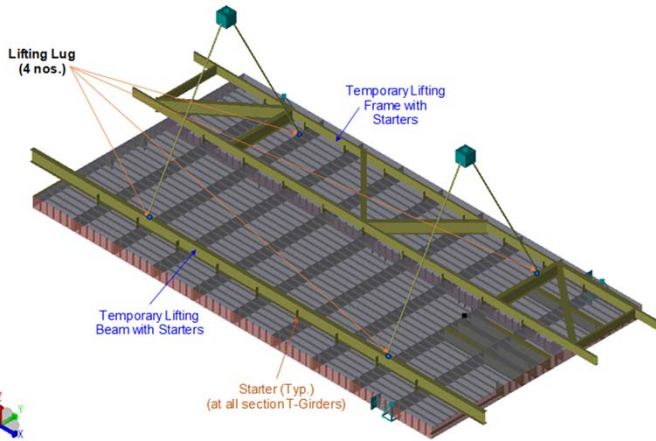
- **Dogger Bank Creyke Beck A Wind Farm**

*Responsible for structural detail engineering package comprising of:*

- Analysis and design of sections during intern lifting.
- Analysis design report preparation and technical design review.
- Structural installation sequence/constructability review.

# Aibel (Thailand)

## Dogger Bank Creyke Beck A Wind Farm



# Technip Engineering (Thailand) Senior Structural Engineer

## Highlight Projects

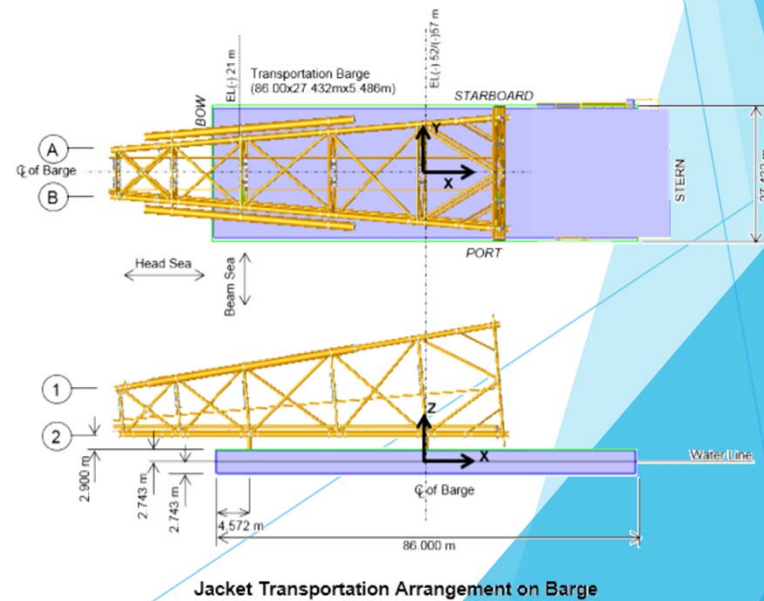
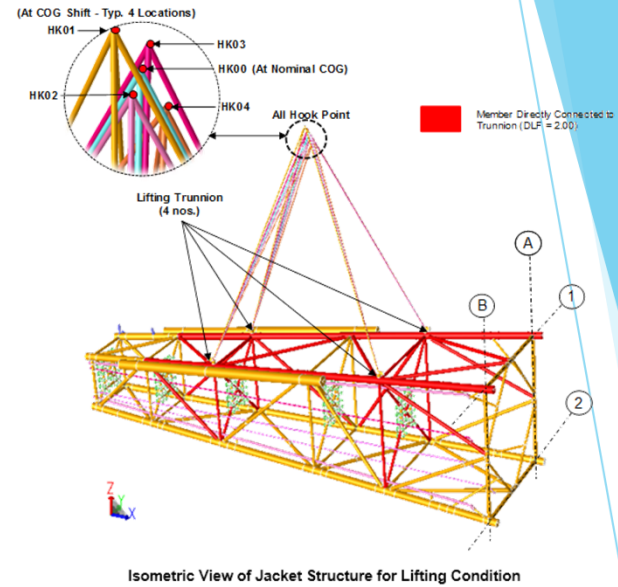
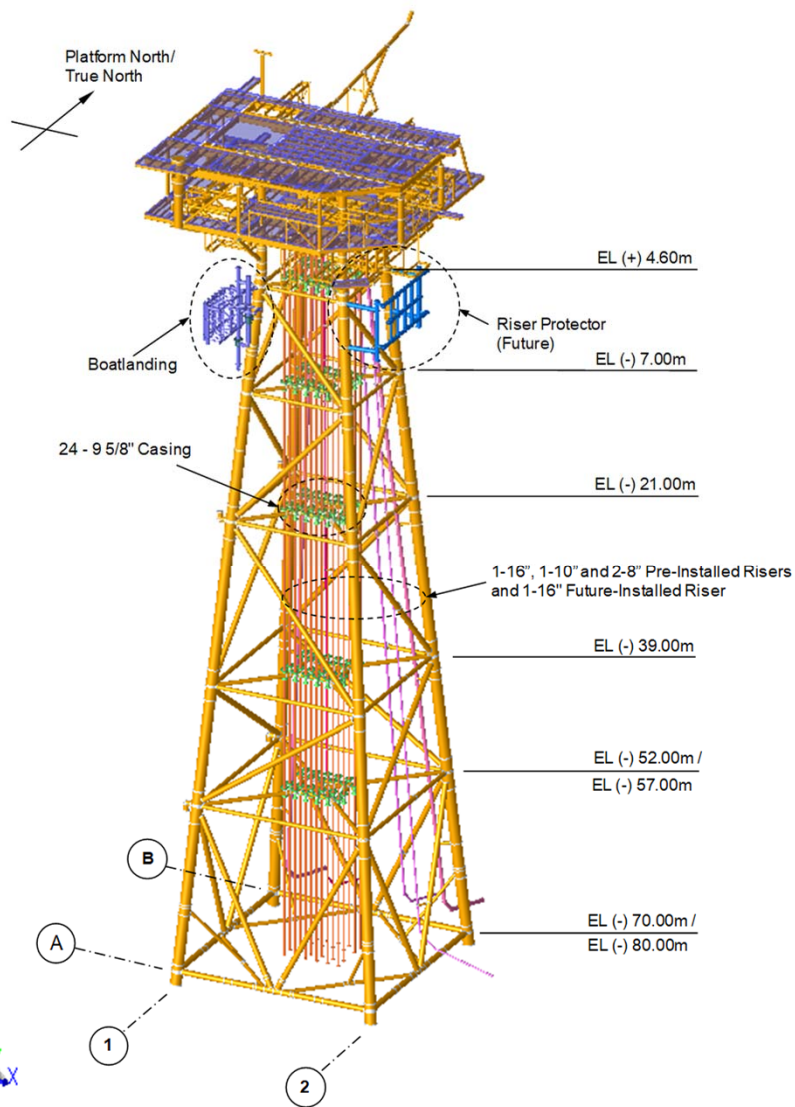
- **Bundle 3 Gas and Oil Wellhead Platforms (sub-lead, Jacket)**
- **ZMFP & Optimized Conventional WHP, Z1D (sub-lead, Topsides)**
- **JDA BLOCK B-17-01 Field Development Project (CPOC - Phase 4) (sub-lead, Topsides)**
- **Bongkot Small Platform**

*Responsible for structural detail engineering package comprising of:*

- Structural design, analyses and detailing of offshore platforms and marine related structures
- Analysis design report preparation and technical design review including structural drawings review.
- Provide on the job training and guidance to junior engineers.
- Being sub-lead engineer on 3 major green field projects

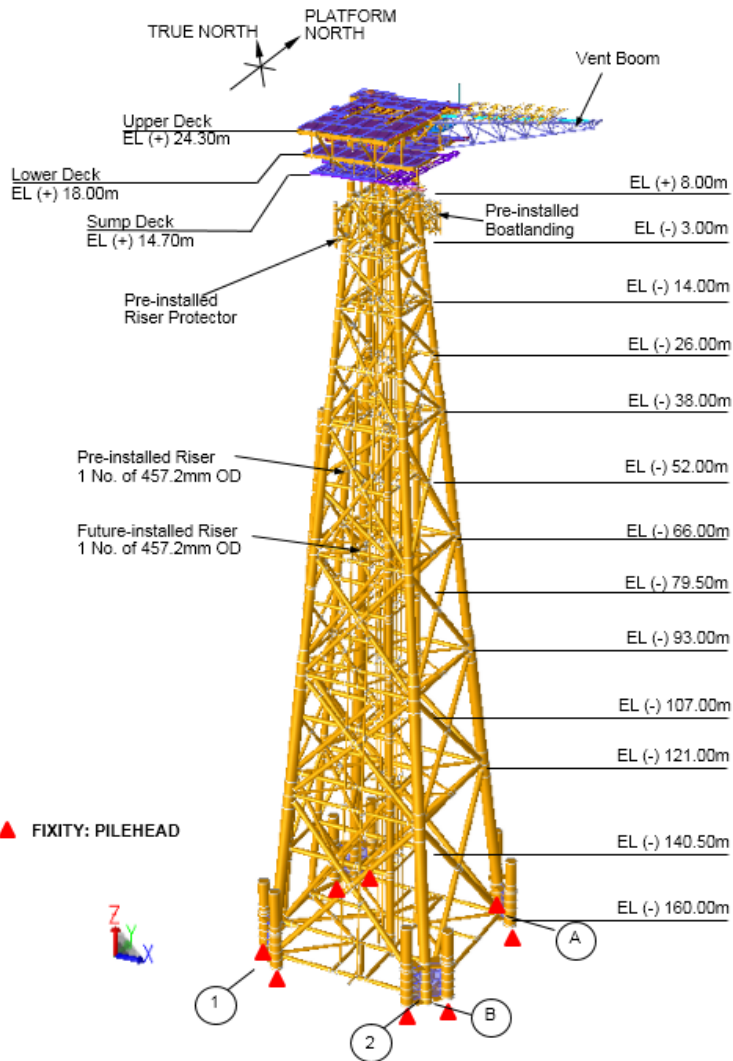
# Technip Engineering (Thailand)

## Bundle 3 Gas and Oil Wellhead Platforms



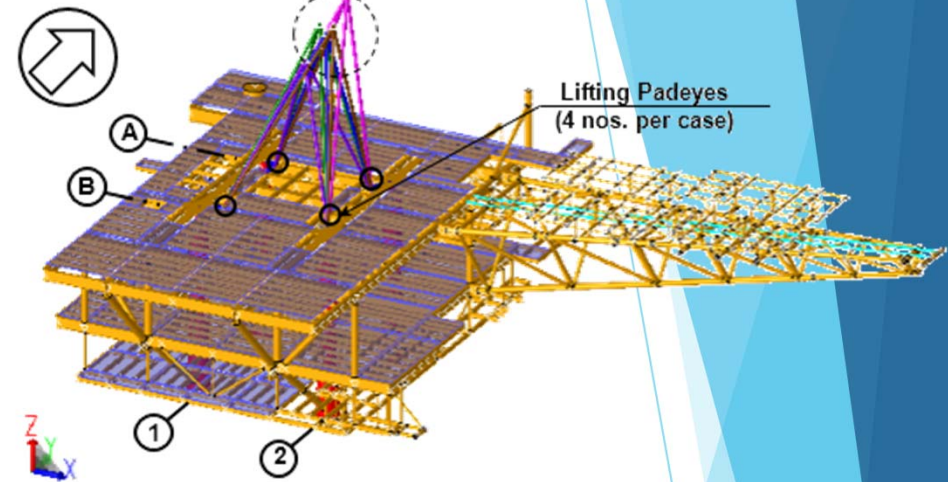
# Technip Engineering (Thailand)

## ZMFP & Optimized Conventional WHP, Z1D

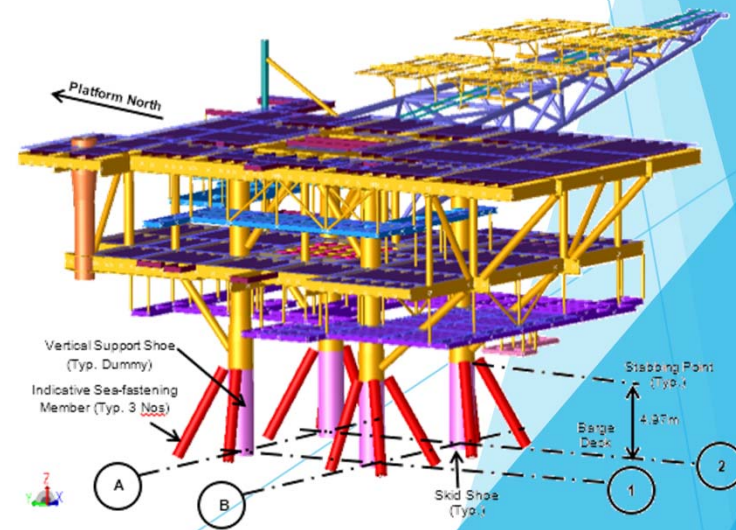


Isometric View of ZMFP Platform Model

Platform North



Isometric View of Lifting Arrangement for Topside Structure

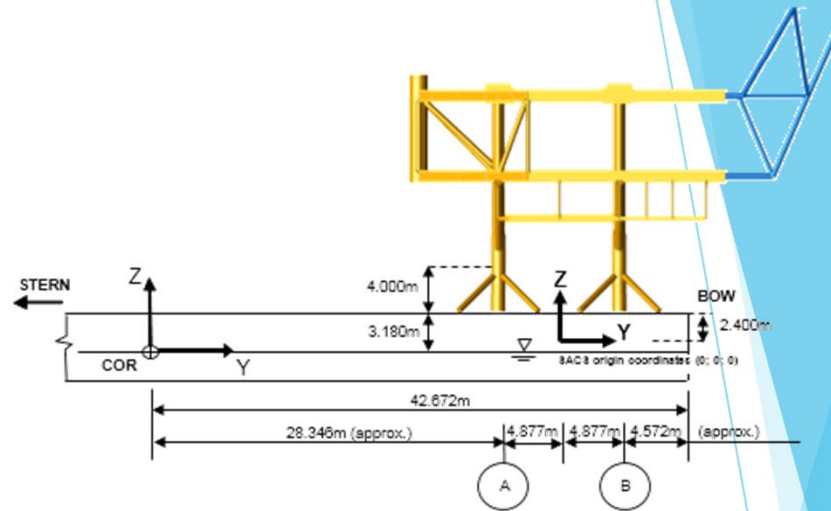
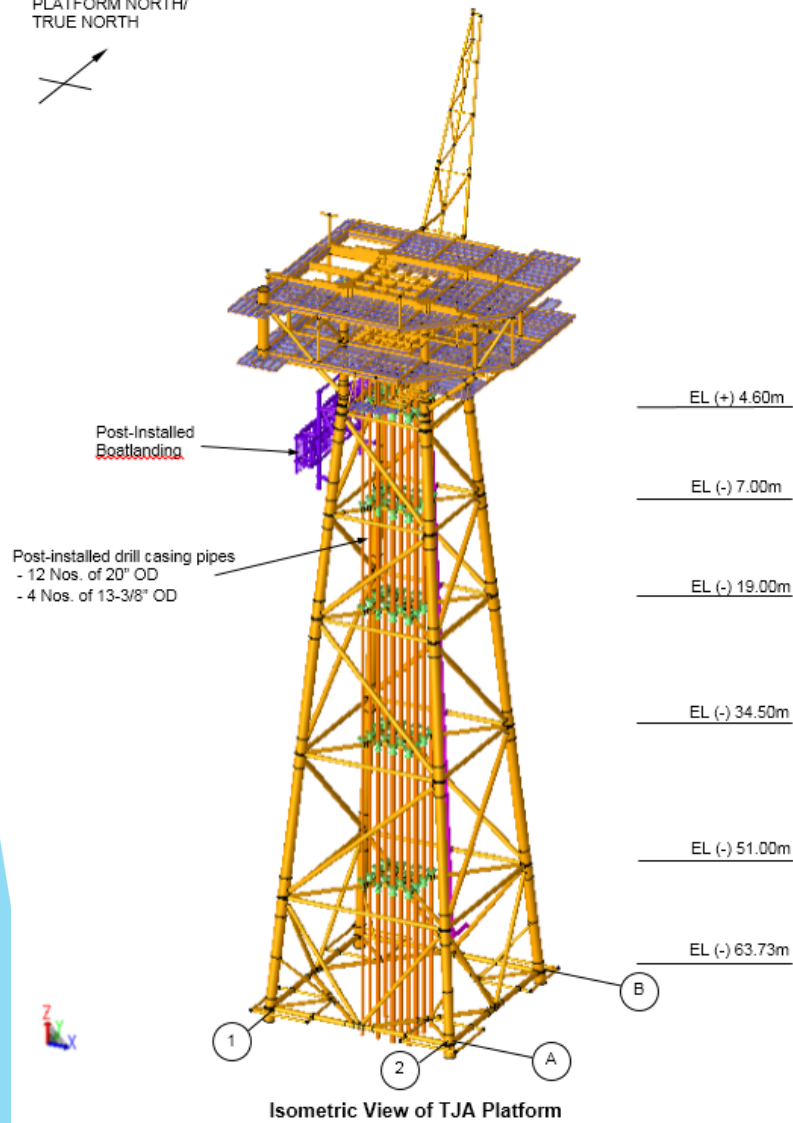


Isometric View of Topside Transportation Analysis Model

# Technip Engineering (Thailand)

## JDA BLOCK B-17-01 Field Development (CPOC Phase 4)

PLATFORM NORTH/  
TRUE NORTH

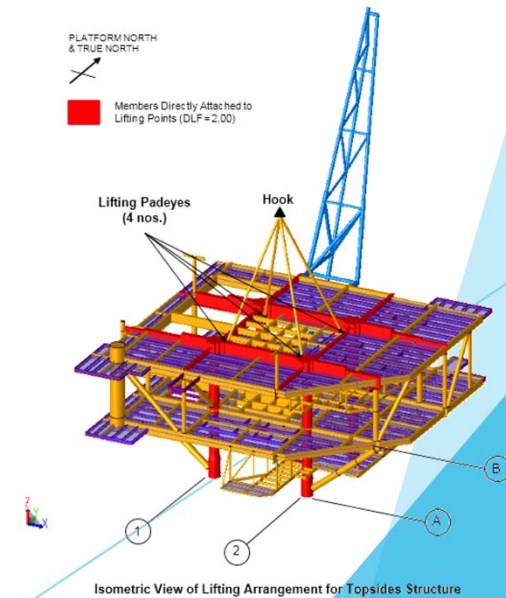


Topsides Transportation Model Axis System

PLATFORM NORTH  
& TRUE NORTH

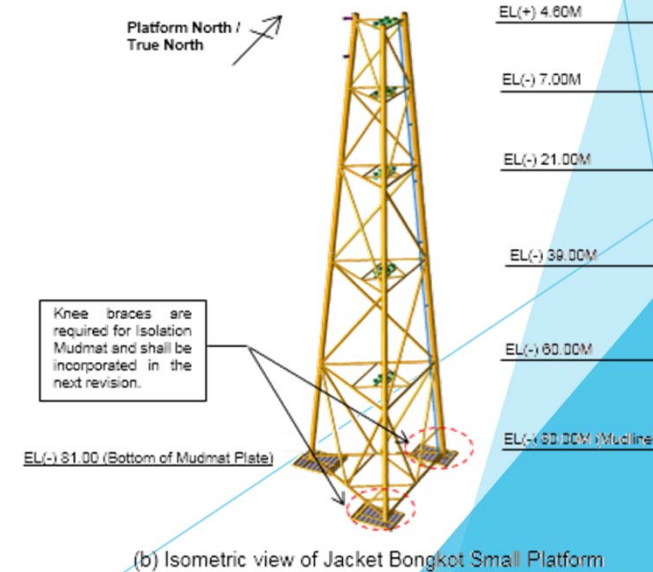
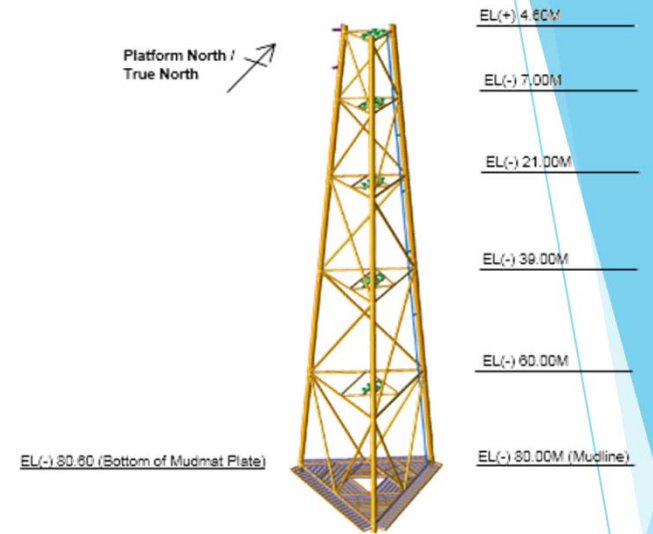
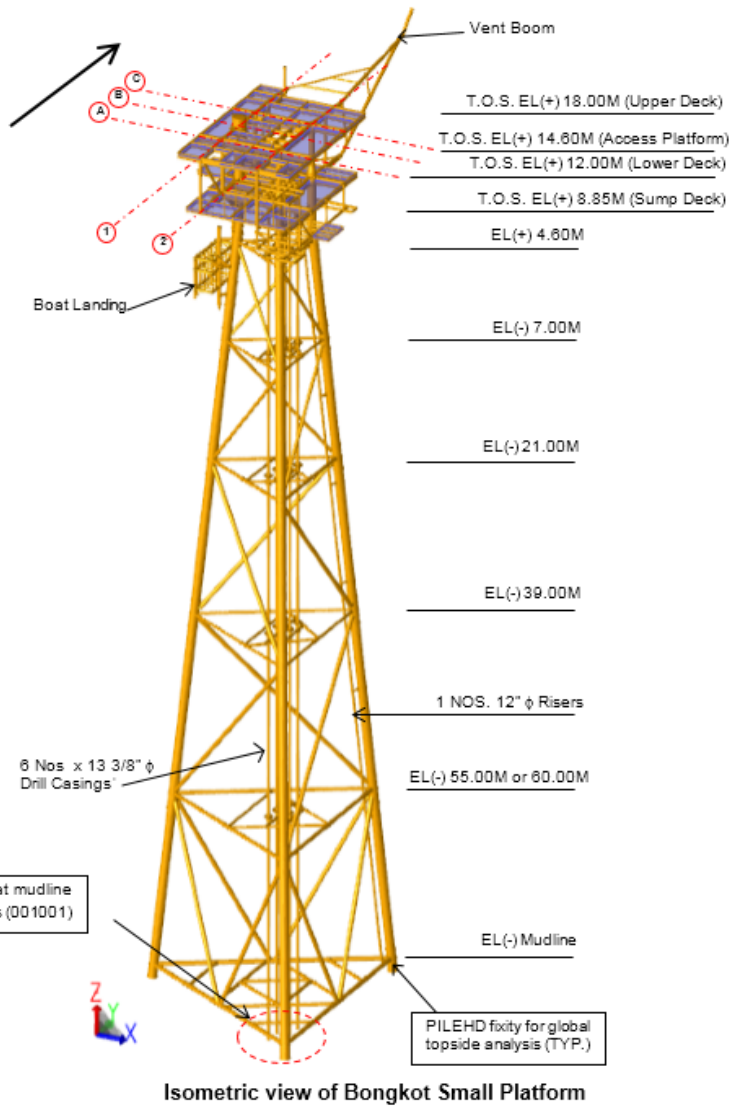


Members Directly Attached to  
Lifting Points (DLF=2.00)



# Technip Engineering (Thailand)

## Bongkot Small Platform





# Design & Engineering Consultancy – DEC (Dubai)

## Design Engineer

### Highlight Projects

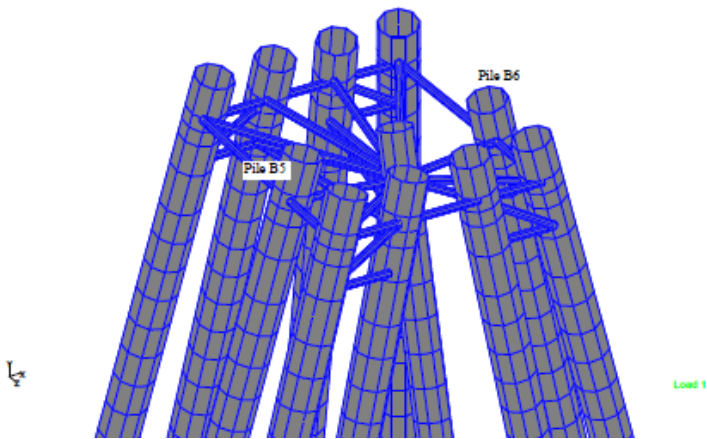
- **Dubai LNG Import Terminal Project**
- **Replacement & Construction of New Service Berth at Ras Laffan**
- **EPC of Jetty Works (Petrofac jetty)**

*Responsible for structural detail engineering package comprising of:*

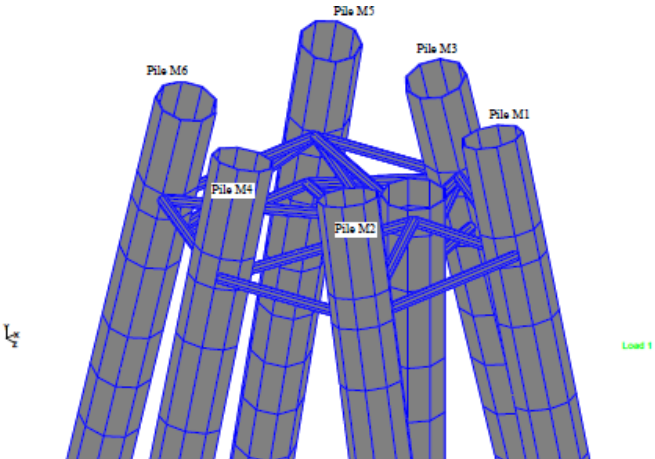
- Structural design, analyses and detailing of steel and reinforced concrete structures associated with marine based construction
- Analysis design report & cost estimation preparation and structural drawings review.

# Design & Engineering Consultancy – DEC (Dubai)

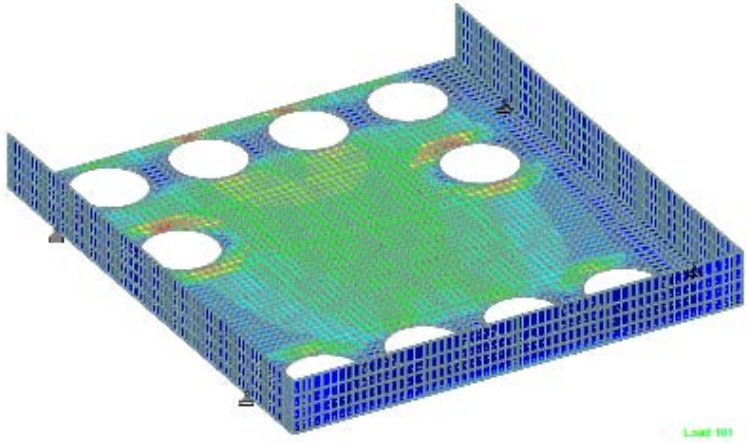
## Dubai LNG Import Terminal Project



Design of Temporary Bracing for Breasting Dolphin Piles



Design of Temporary Bracing for Mooring Dolphin Piles

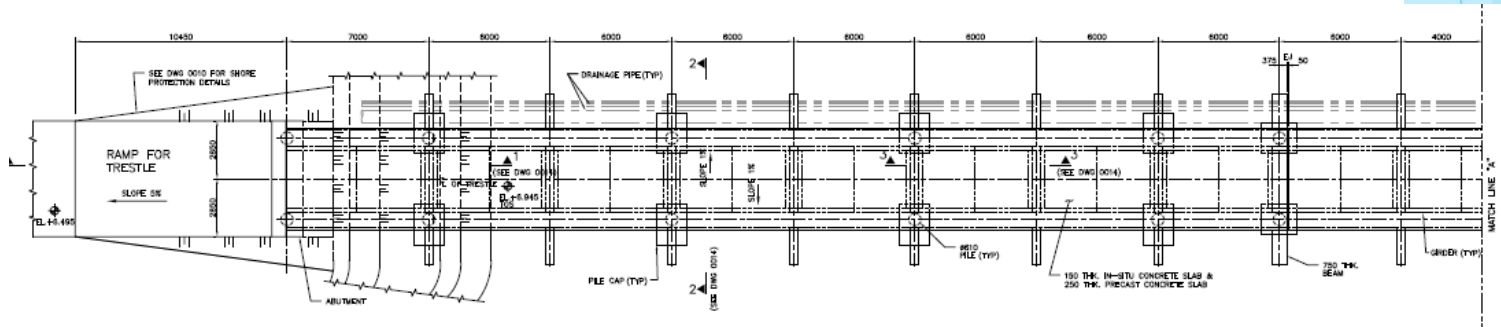
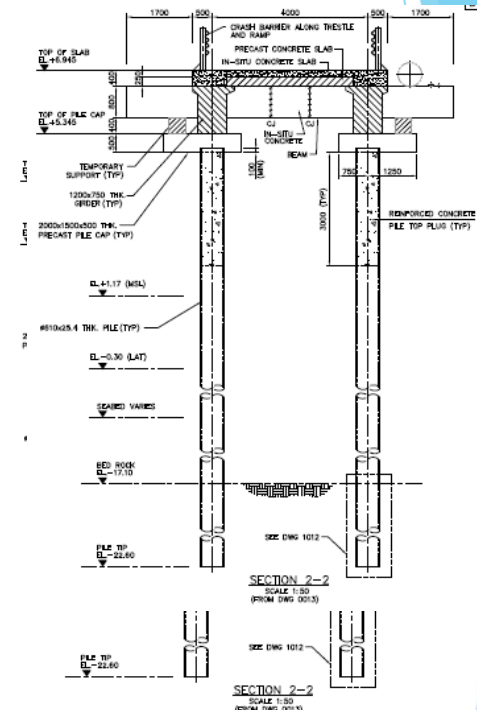
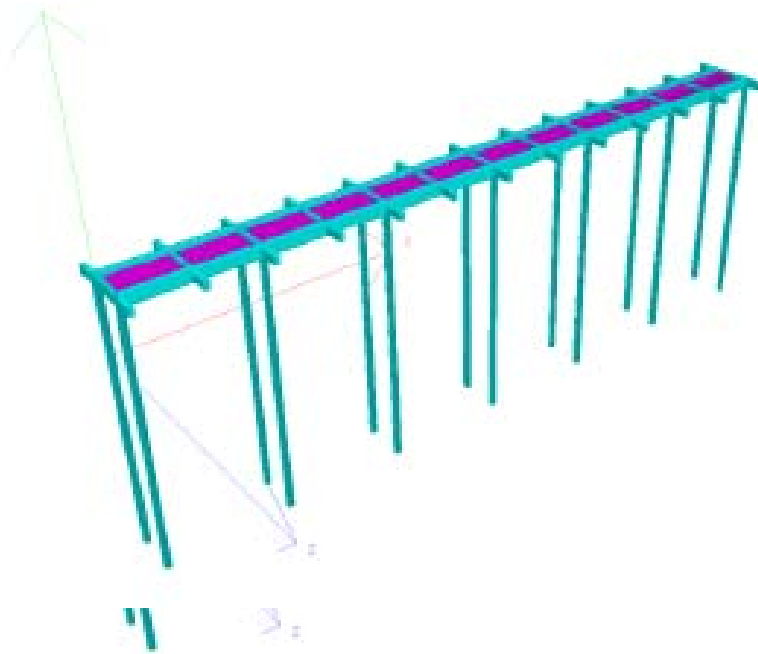


Design of Elevated Deck for Casting of Dolphin Shells



# Design & Engineering Consultancy – DEC (Dubai)

## EPC of Jetty Works (Petrofac Jetty)



Design of Approach Trestle

# Wisit Engineering (WE) Consultants (Thailand) Civil and Structural Engineer

## Highlight Projects

- **Surarnabhumii Airport Rail Link and City Air Terminal at Makkasan/Asoke Station Building**
- **The Madison Condominium, Sukhumvit 41, Bangkok**
- **Chiang Mai International Airport Terminal and Cargo Building, Thailand.**

*Responsible for structural detail engineering package comprising of:*

- Structural design, analyses and detailing of steel and reinforced concrete structures associated with marine based construction
- Analysis design report & cost estimation preparation and structural drawings review.

## Wisit Engineering (WE) Consultants (Thailand)



The Madison Condominium



Surarnabhumhi Airport Rail Link and City Air Terminal at Makkasan/Asoke Station Building



Chiang Mai International Airport Terminal and Cargo Building