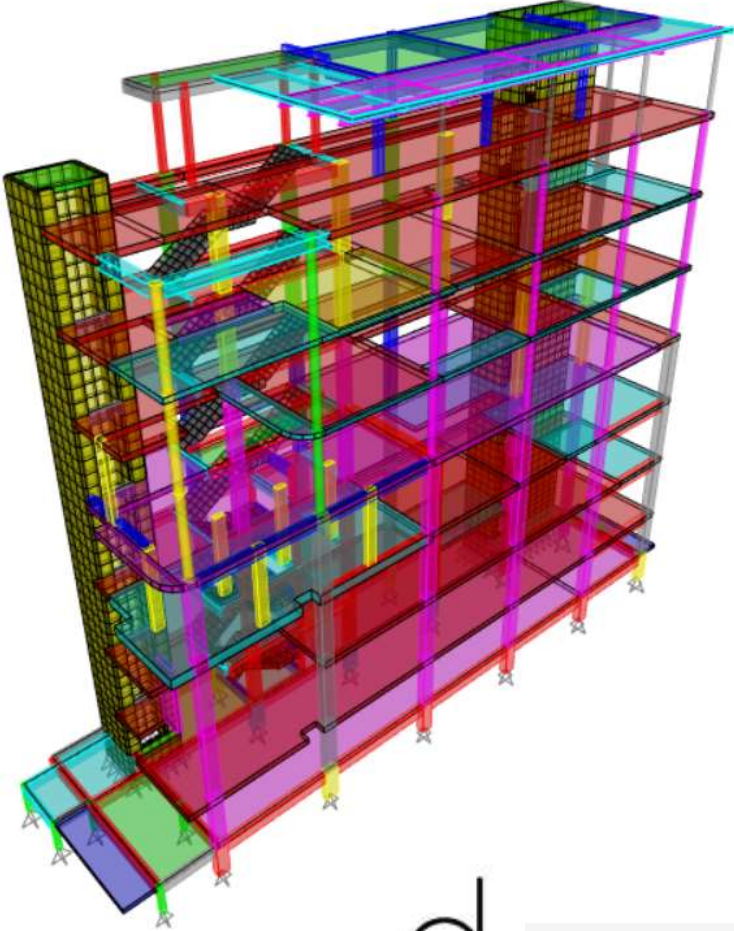




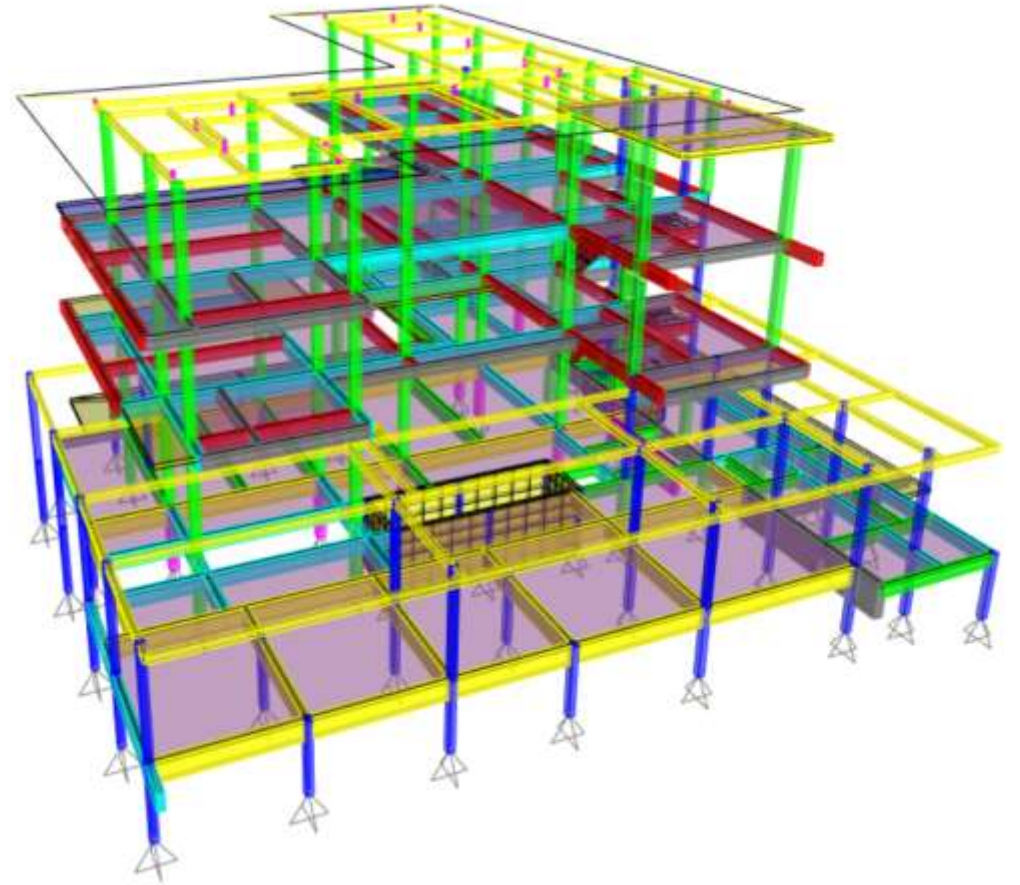
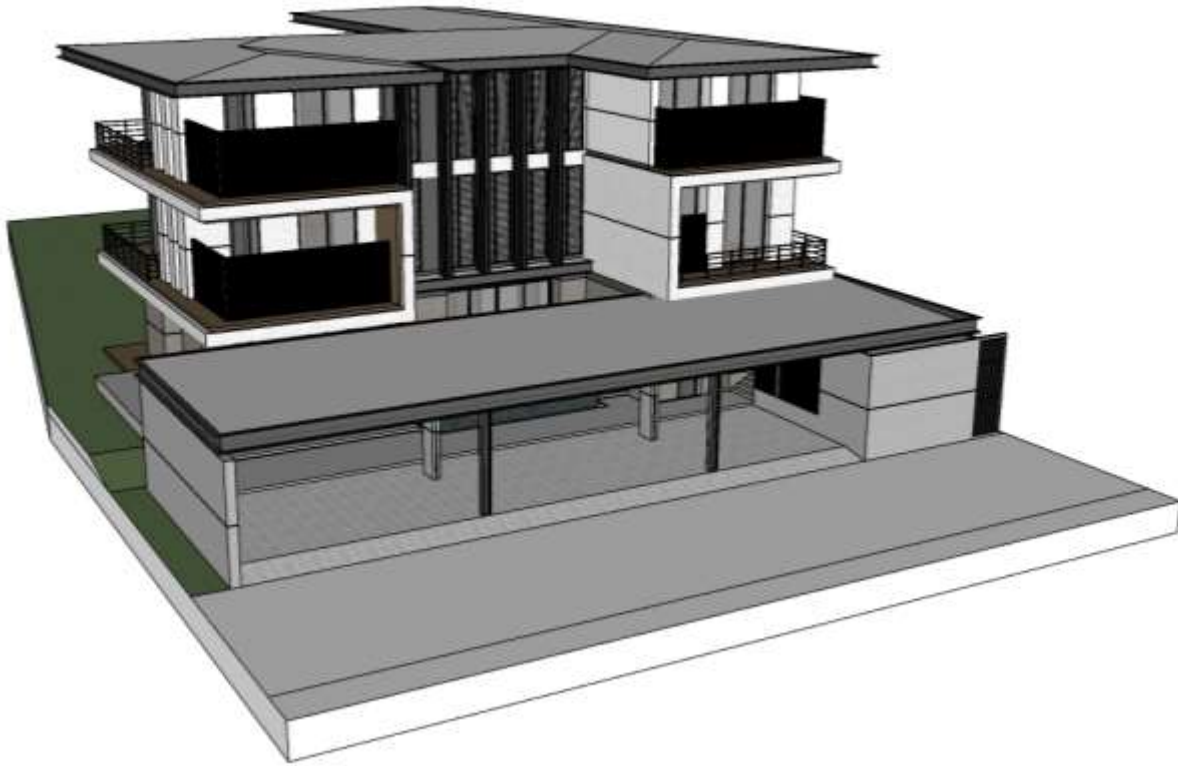
# PROJECT REFERENCE

8 story residential & office building (1,900sq-m.)



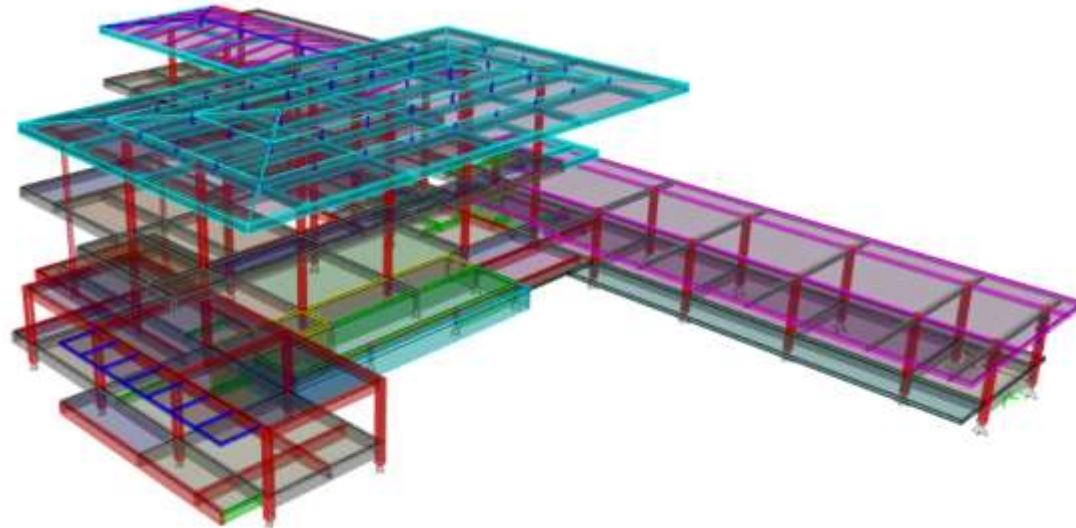
g greendwell

3 story residential building (1,450sq-m.)

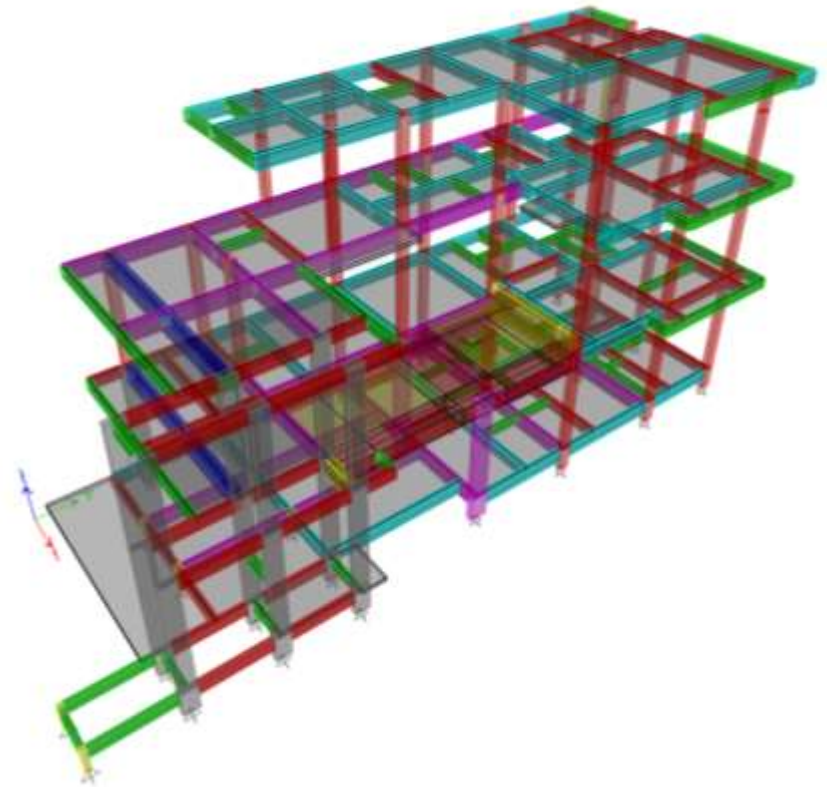


g greendwell

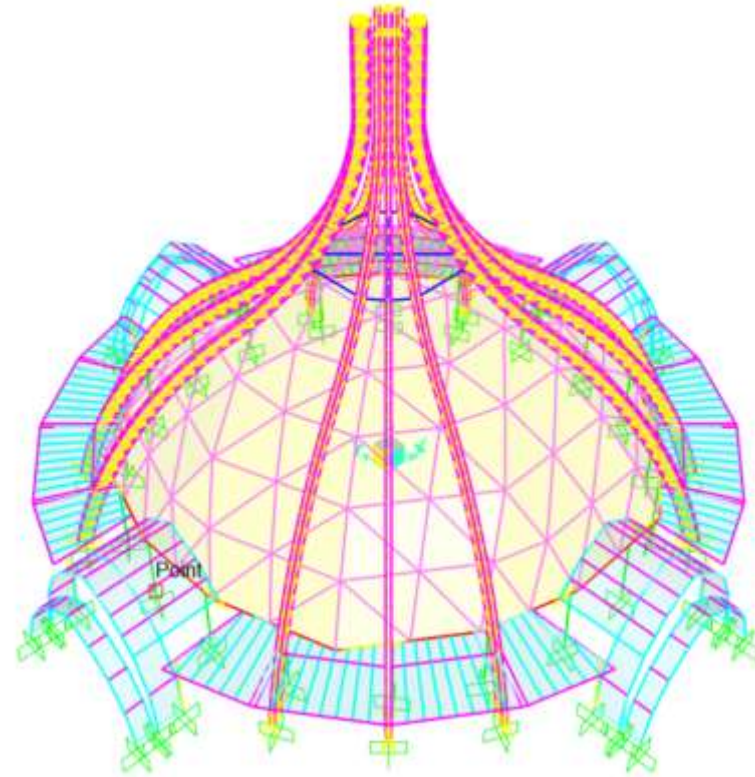
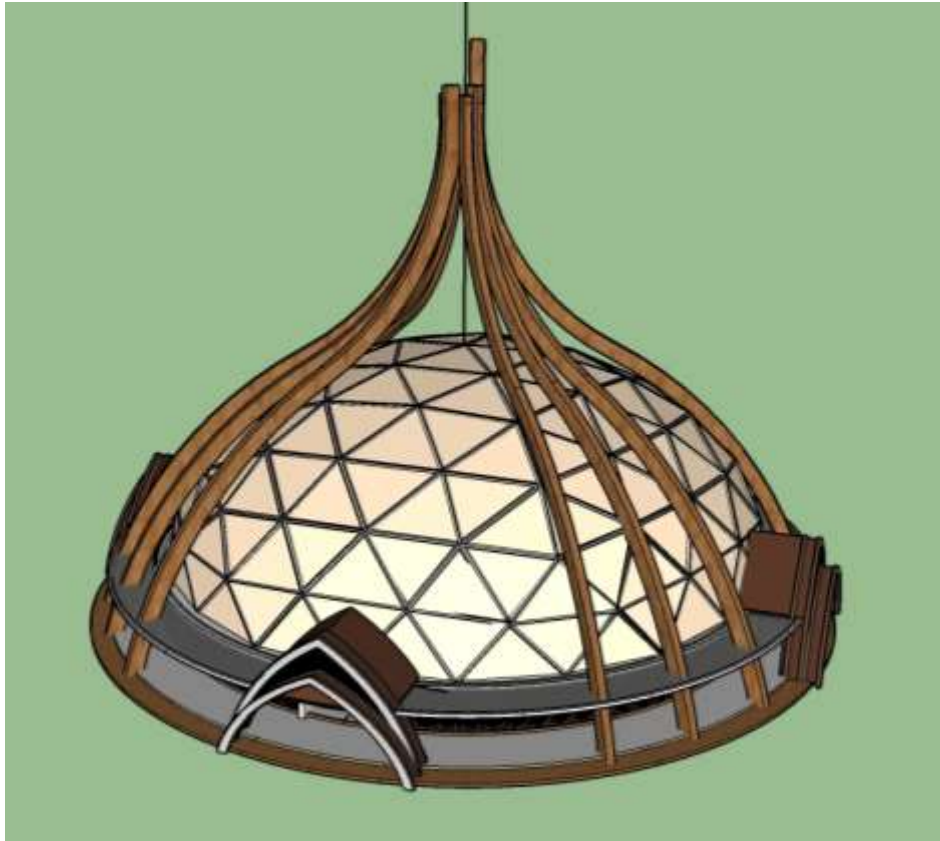
2 story residential building (1,500sq-m.)



3 story residential building (730sq-m.)

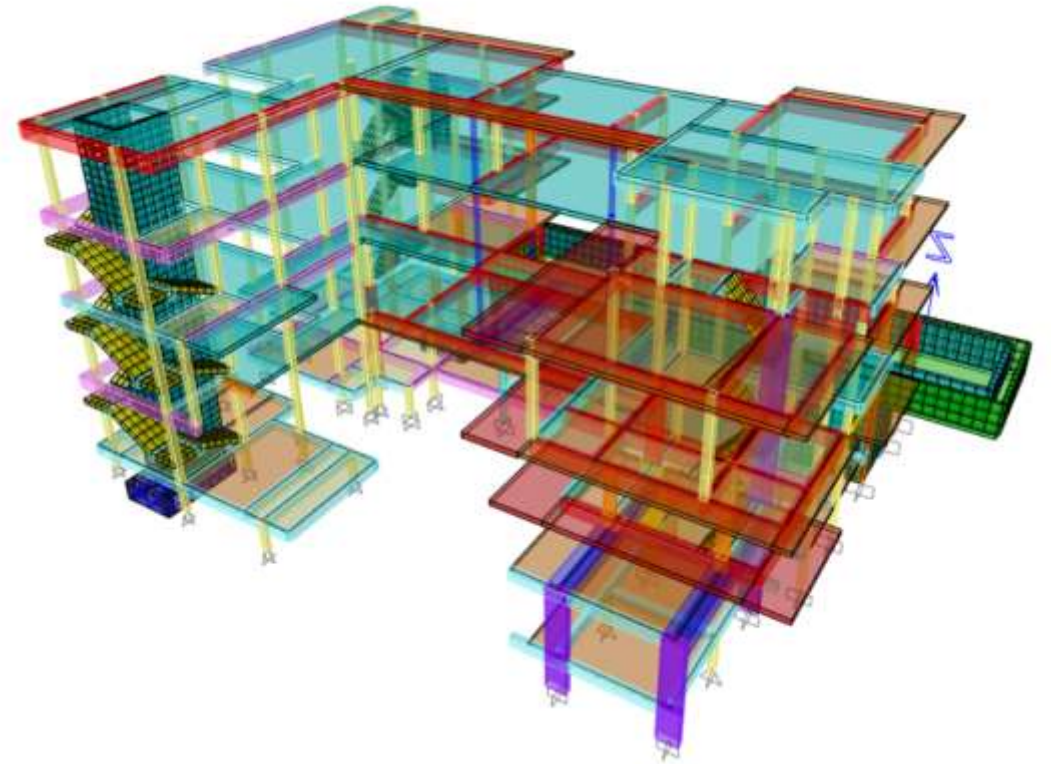


Dome building Department of Public Works and Town & Country Planning  
(3,300sq-m.)



# 4 story residential building (1,880sq-m.)

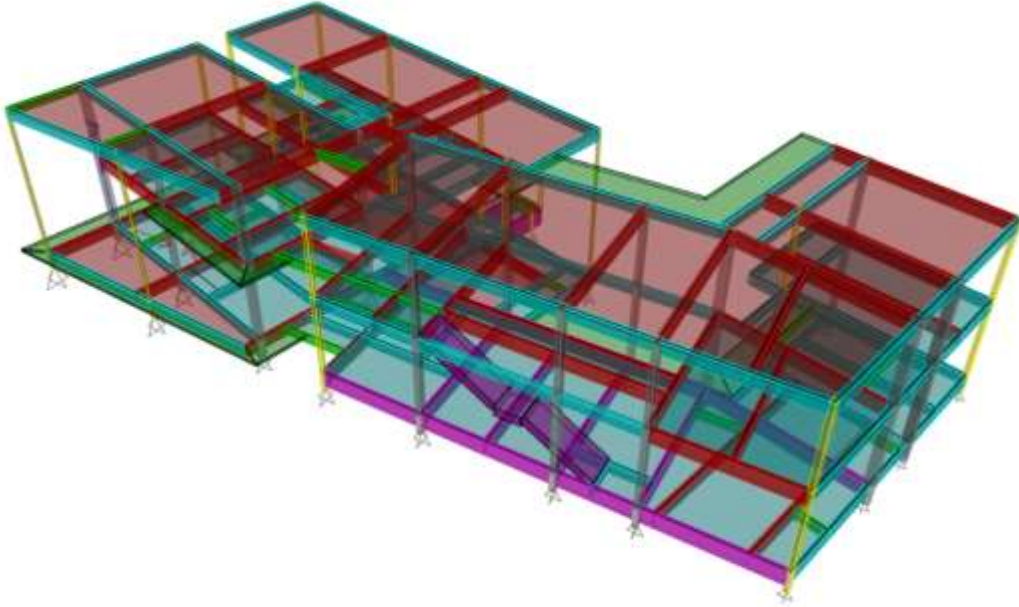
PANYA HOUSE  
PHATAHANGKAN, BANGKOK



JUNSEKINO  
JUNSEKINO ARCHITECT AND DESIGN CO.,LTD.

JUNSEKINO  
ARCHITECT AND DESIGN CO.,LTD.

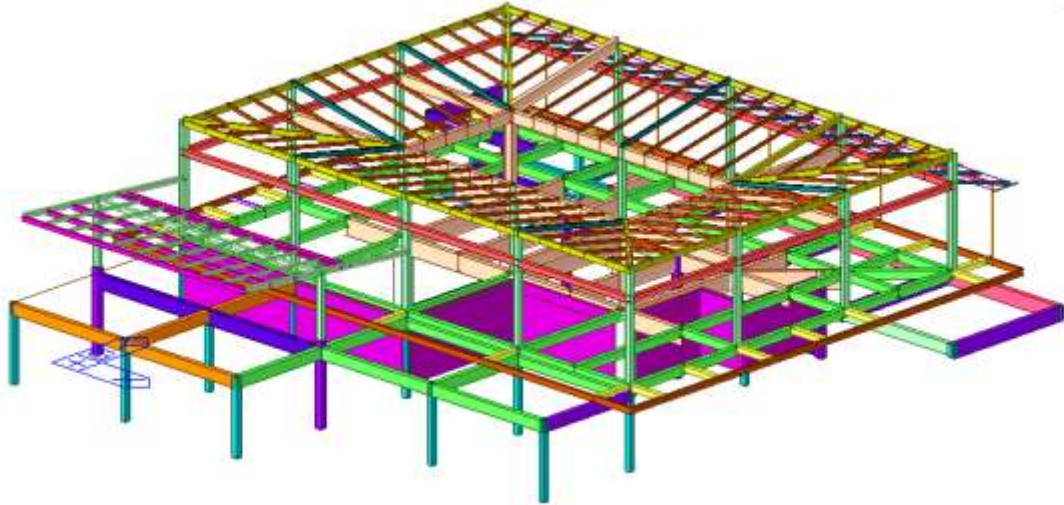
2 story residential building (830sq-m.)





# 1 story residential building (770sq-m.)

BAAH KHAO YAI  
SHAQ YAL THAMLAHO



JUNSEKINO  
ARCHITECT AND DESIGN CO., LTD.

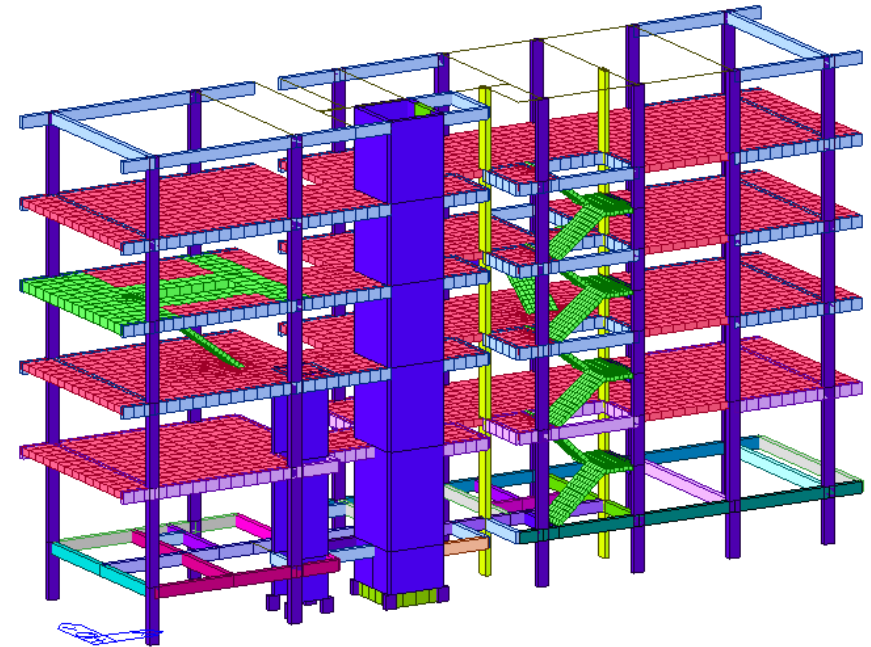
JUNSEKINO  
JUNSEKINO ARCHITECT AND DESIGN CO., LTD.

# 5 story residential building (960 sq-m.)

BAAN RANGNAM

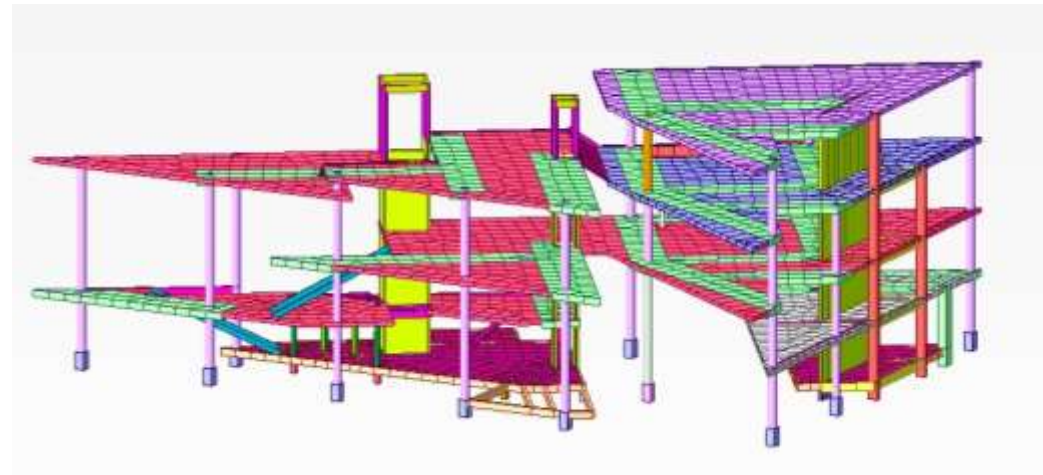


JUNSEKINO  
ARCHITECT AND DESIGN CO., LTD.



JUNSEKINO  
JUNSEKINO ARCHITECT AND DESIGN CO., LTD.

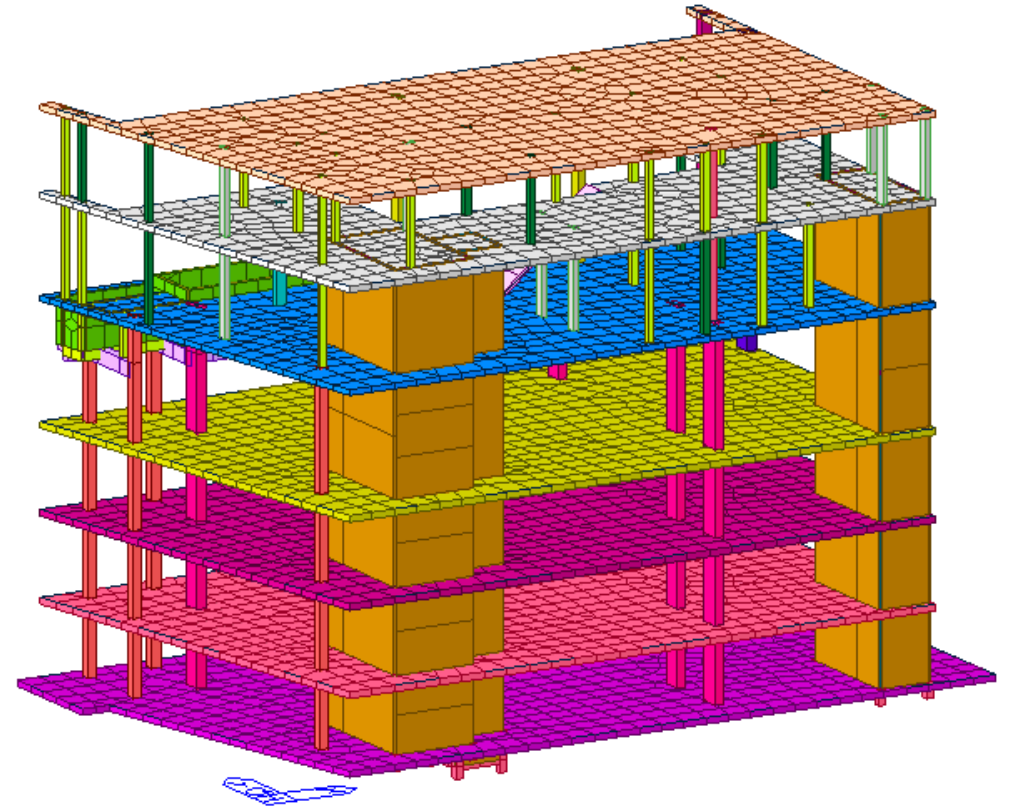
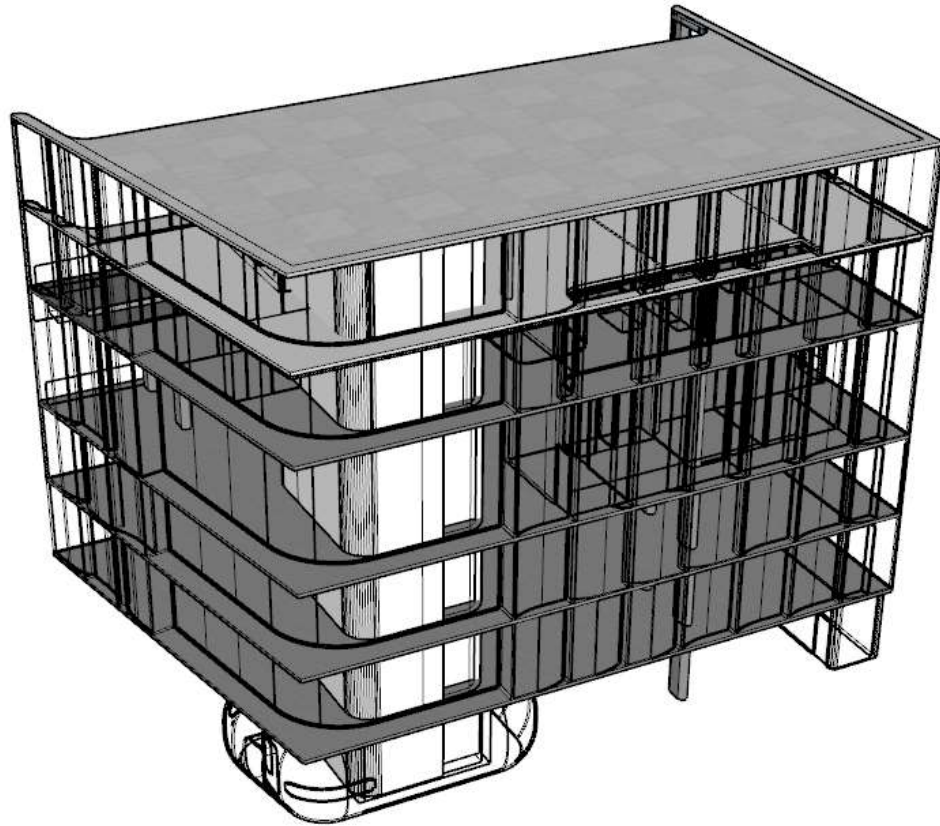
## 4 Story Restaurant (2,870 sq-m.)



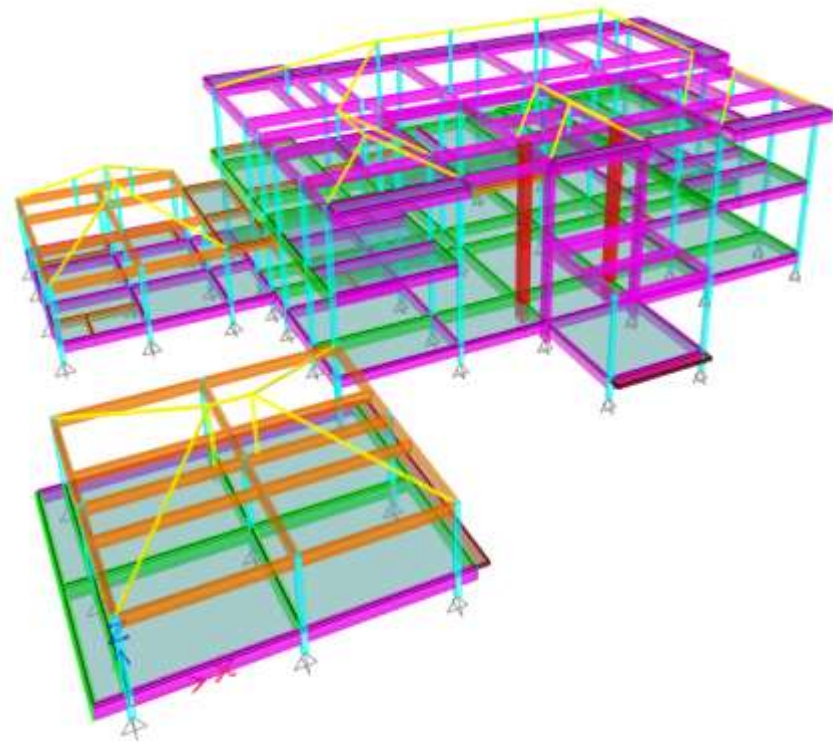
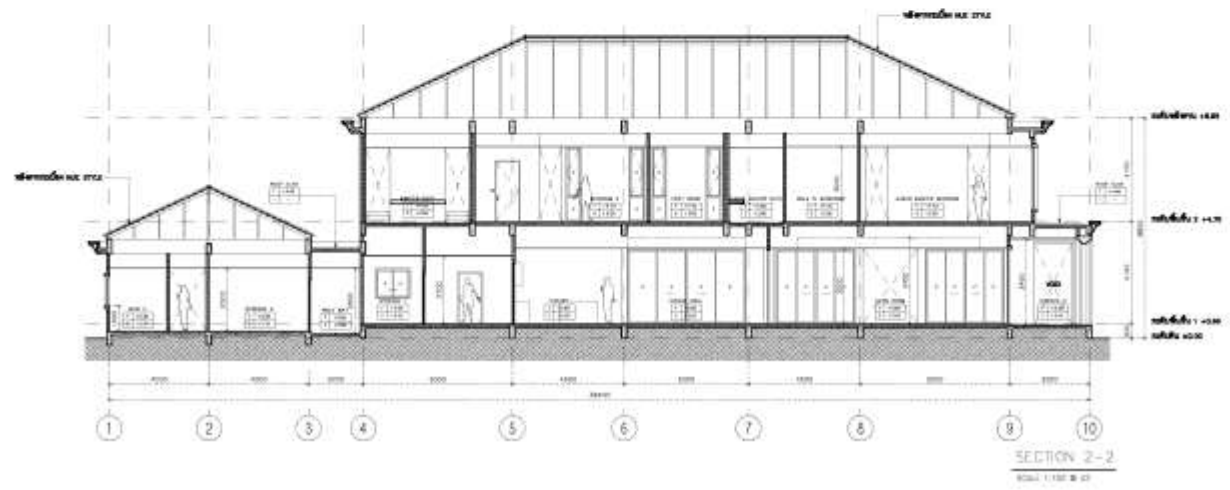
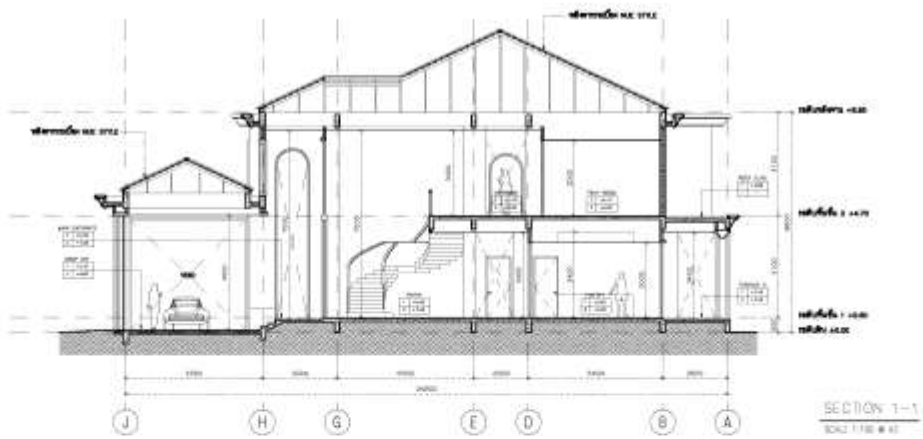
### 3 story residential building (670 sq-m.)



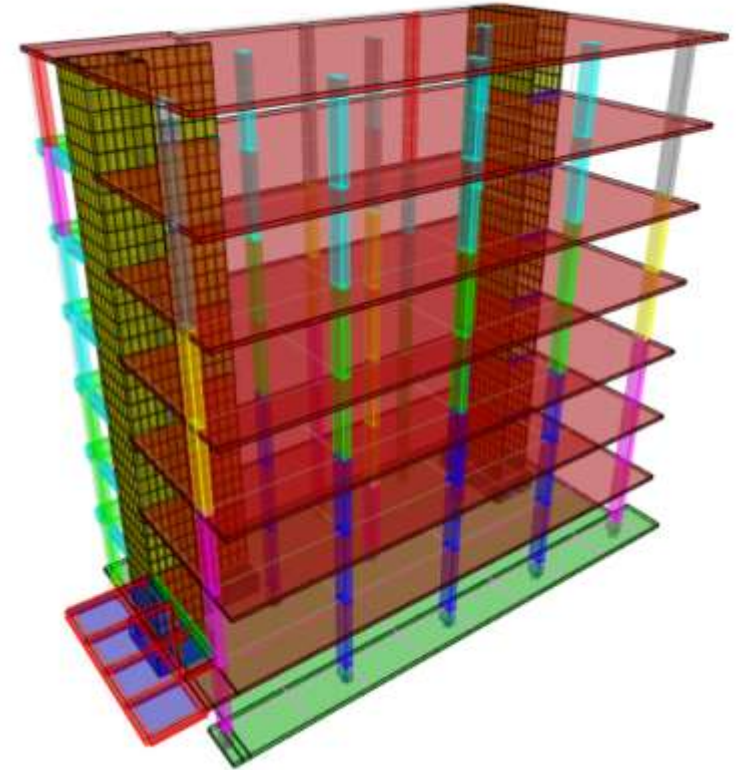
5 story residential & commercial building (3,440 sq-m.)



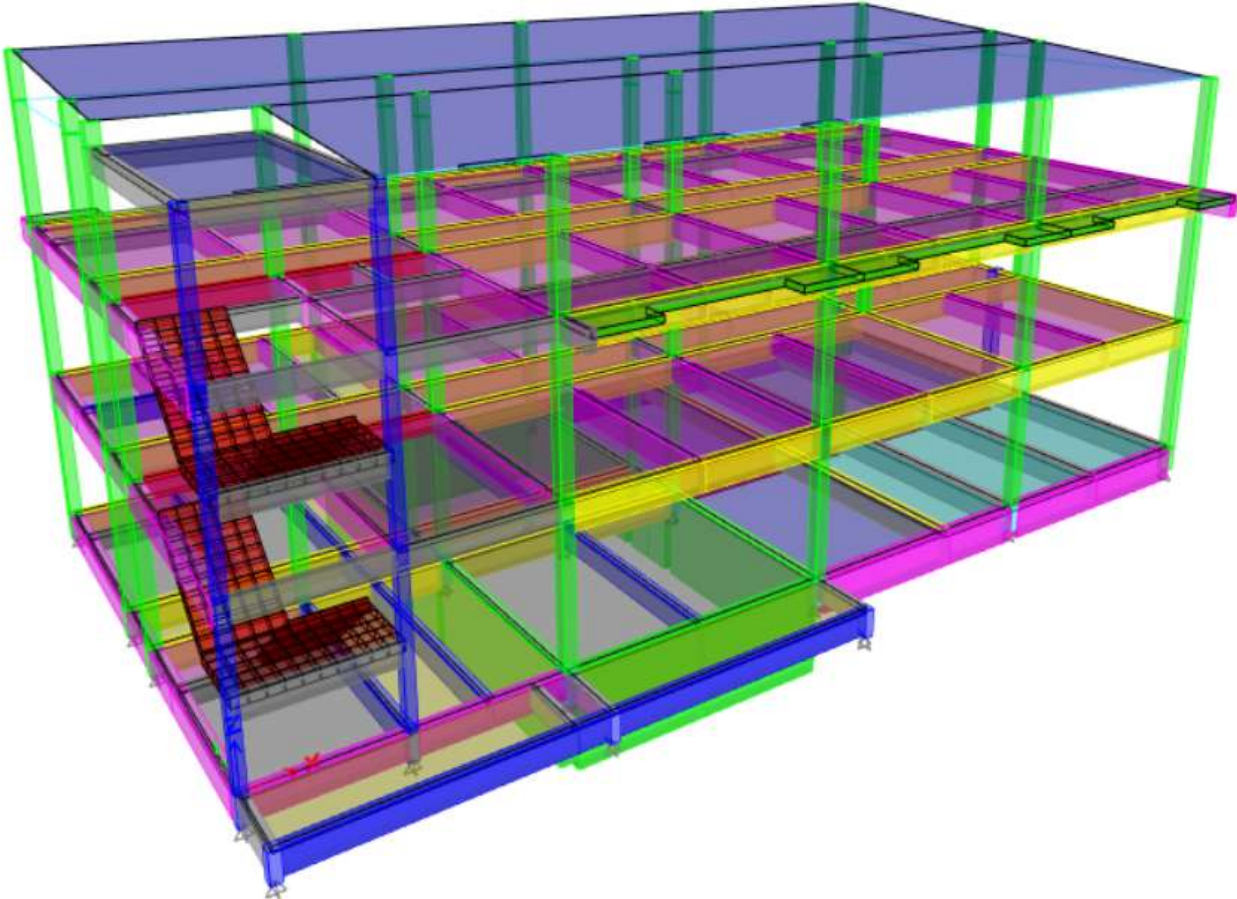
# 2 story residential building (1,260sq-m.)



## 7 story hotel (2,960sq-m.)



# 3 story diving school (1,000 sq-m.)



SECTION S1

SCALE 1/100

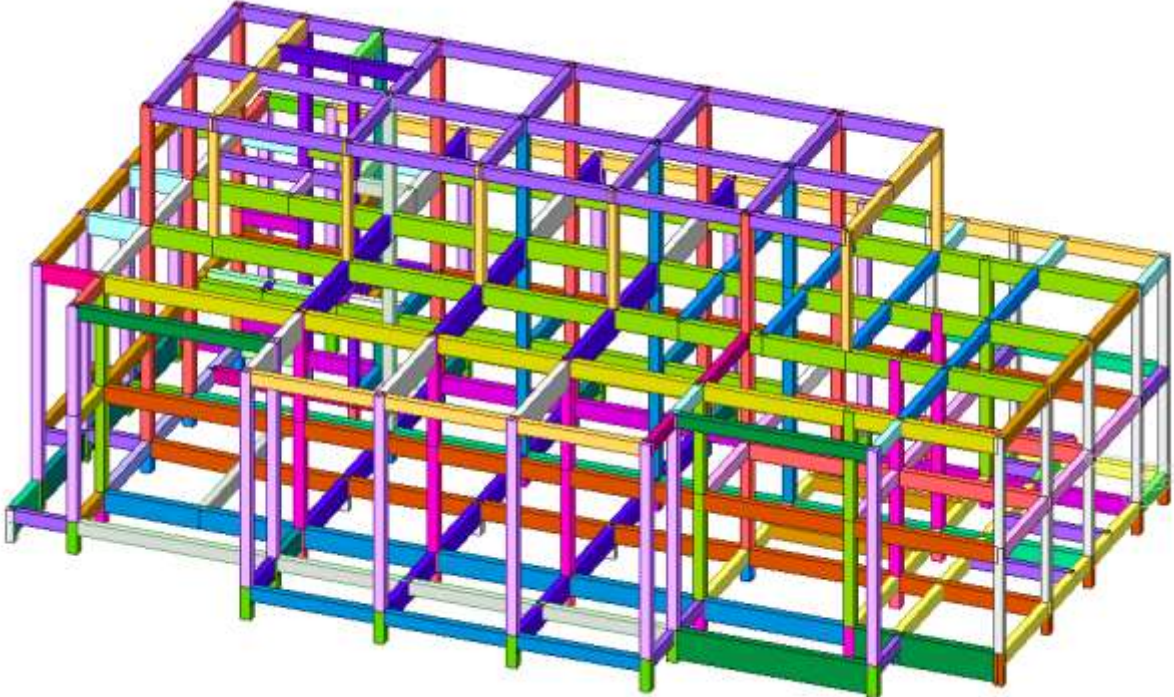


SECTION S4

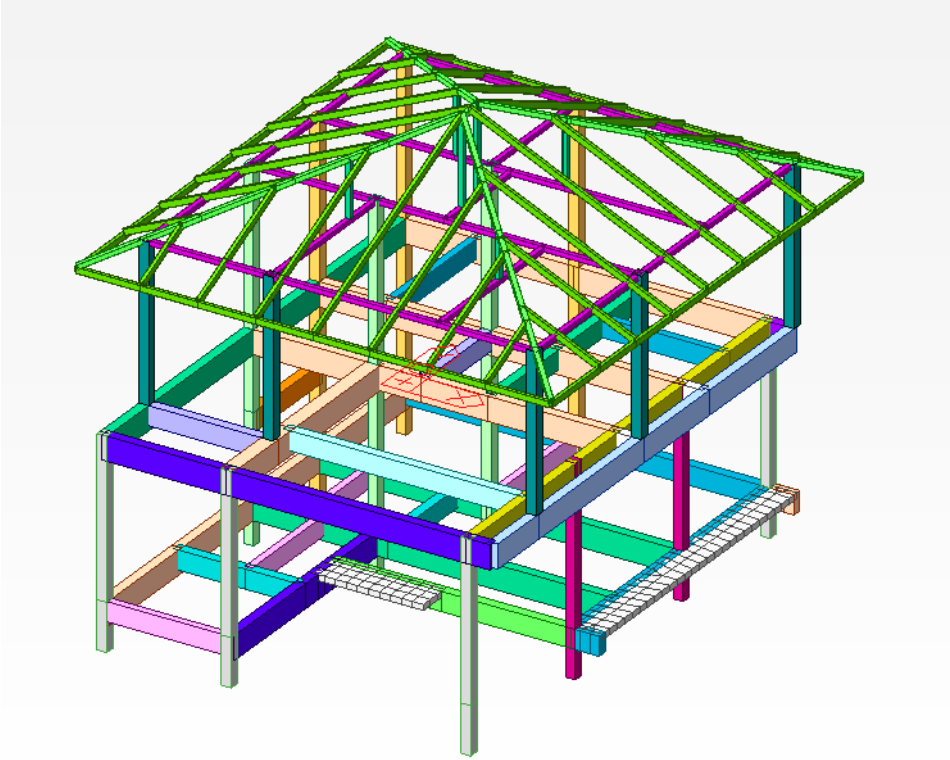
SCALE 1/100



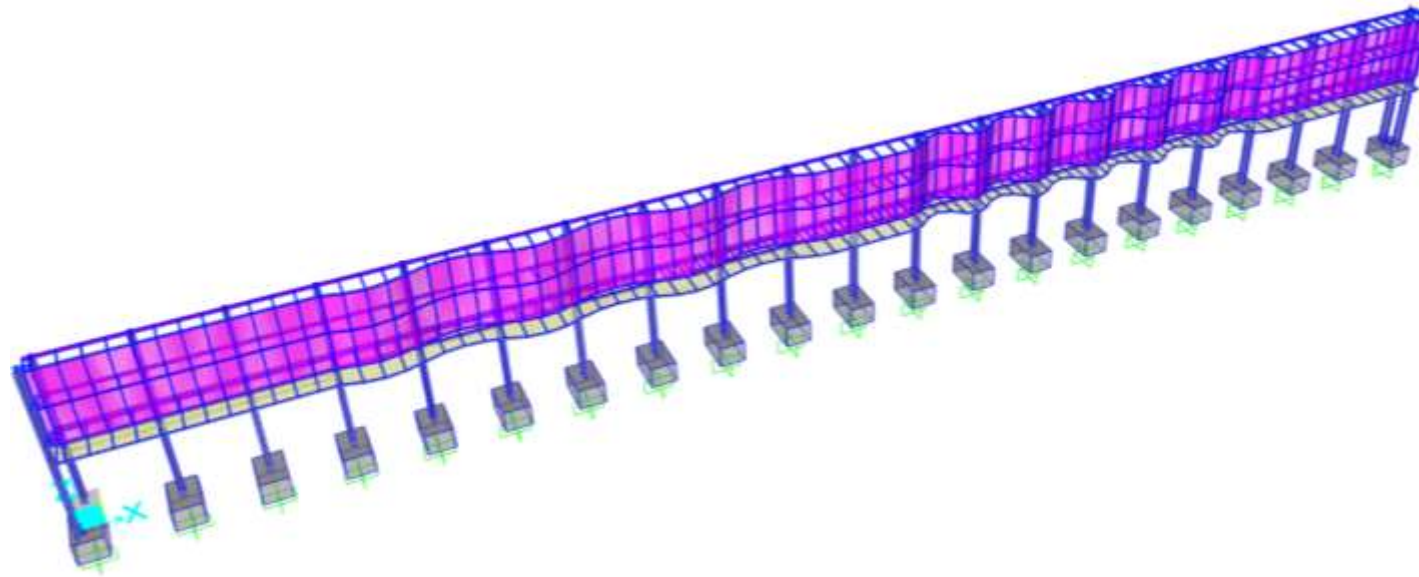
3 story residential building (1200sq-m.)



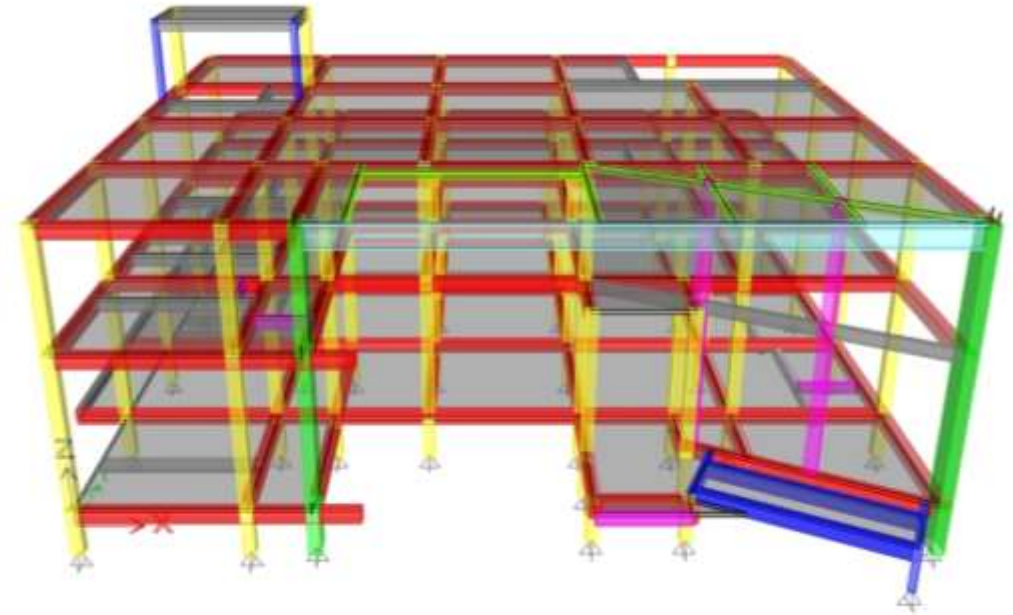
2 story residential building (230sq-m.)



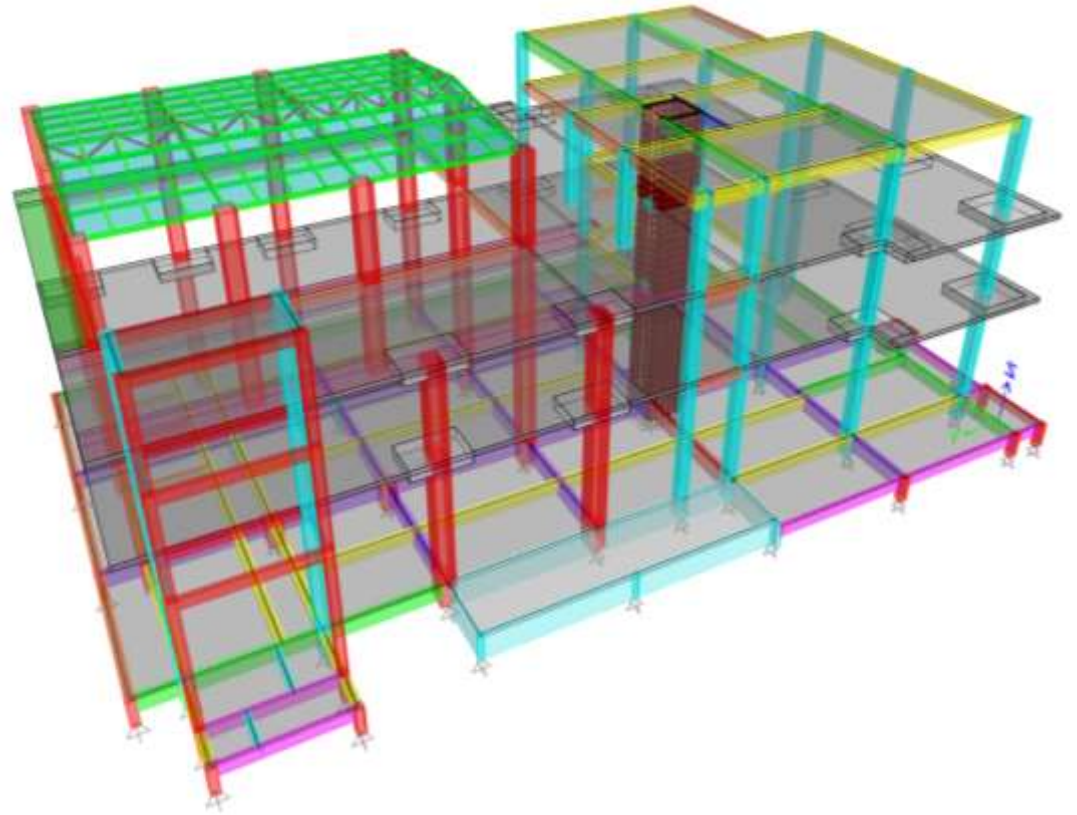
## Terdtai market facade



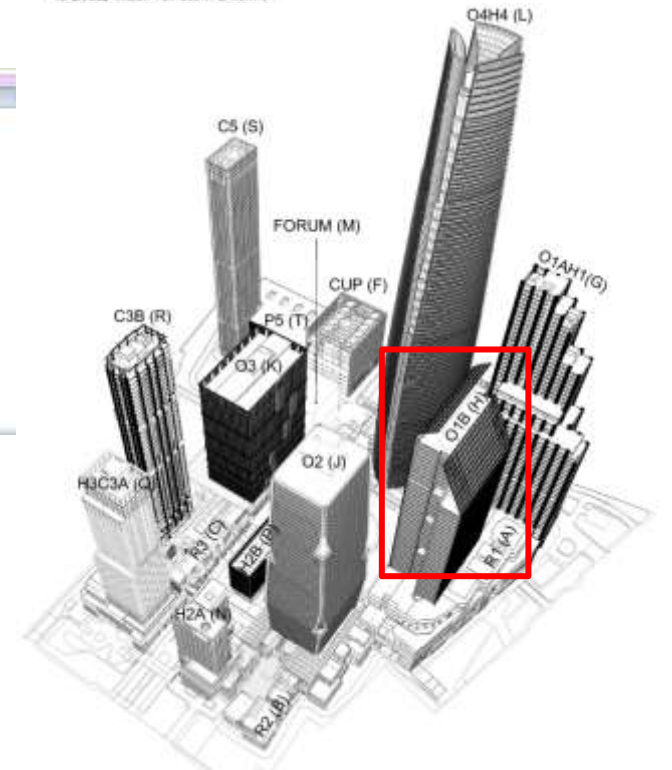
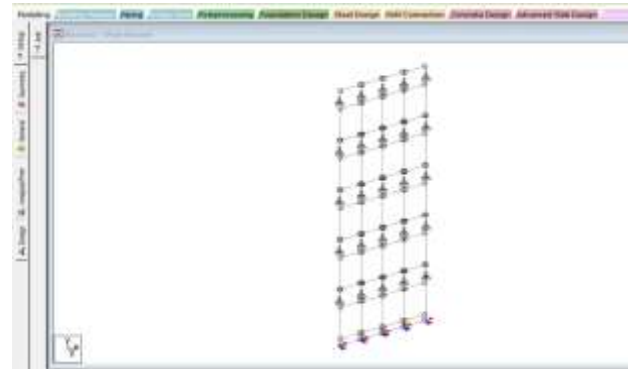
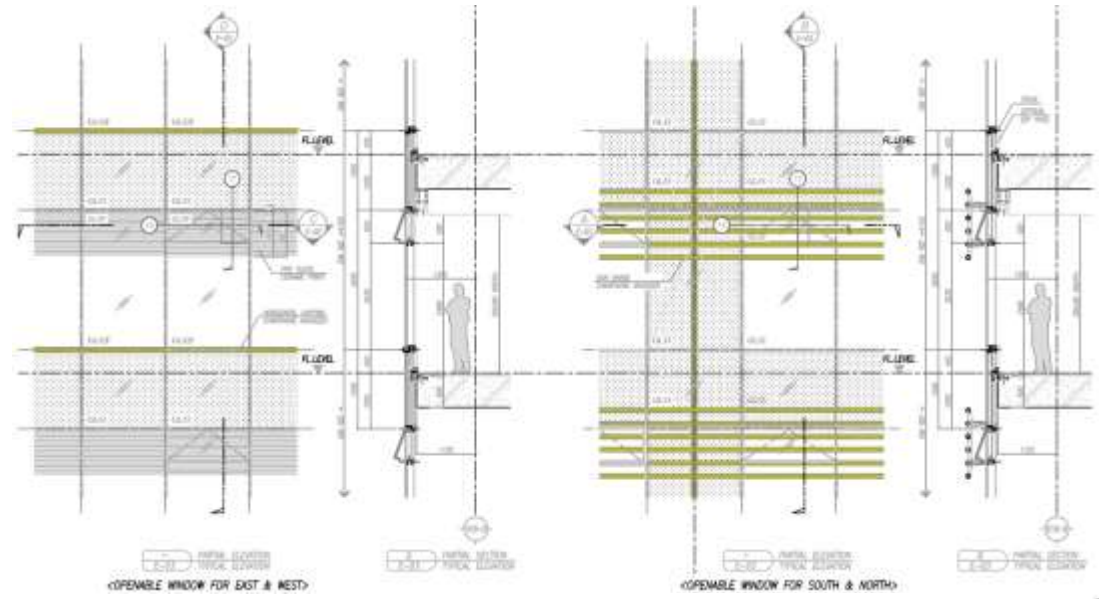
## EXAT Material testing laboratory (1,730 sq-m.)



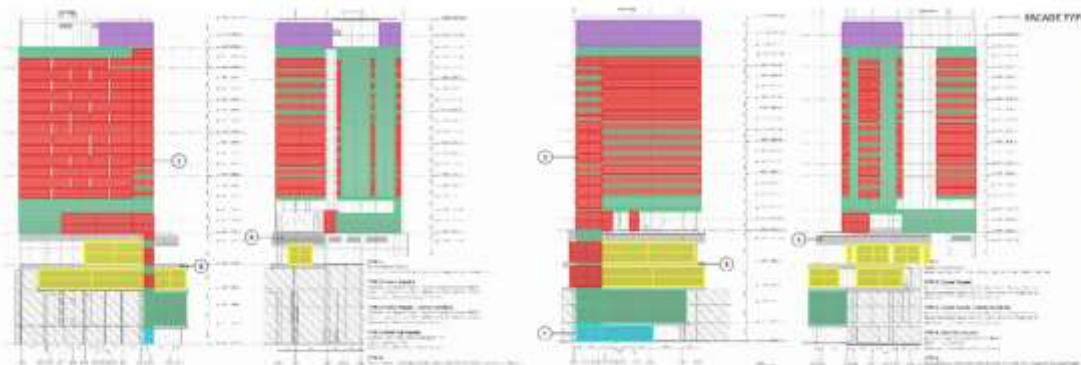
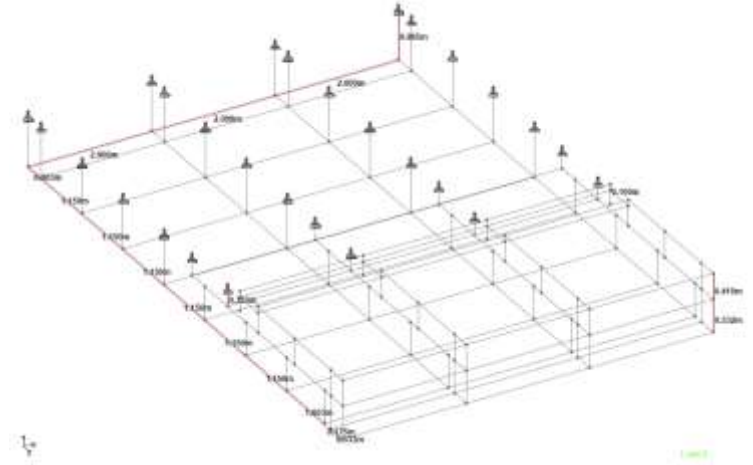
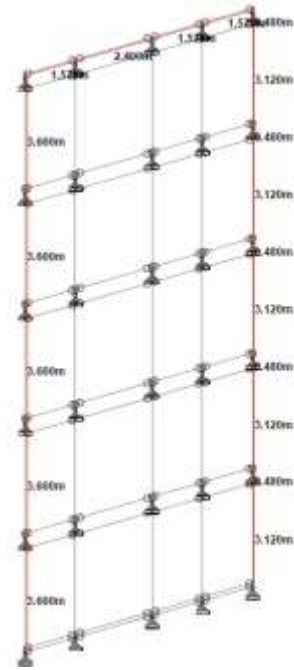
# Samut Sakhon Industrial Estate (3,300 sq-m.)



# One Bangkok O1B Typical curtain wall

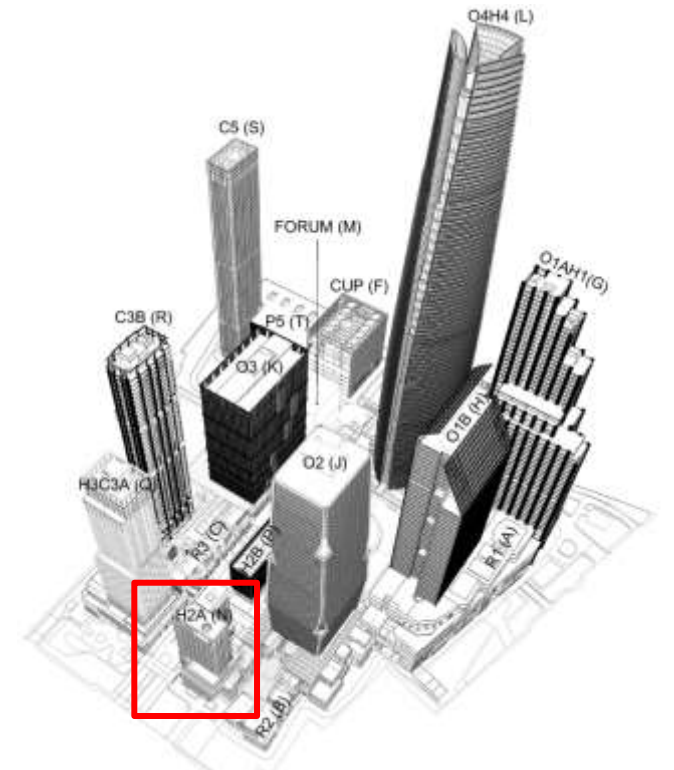
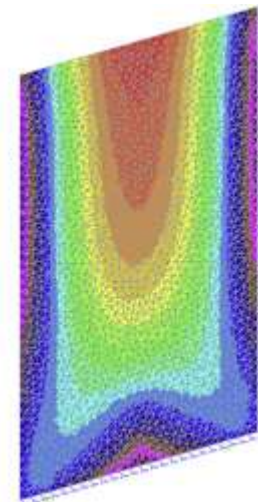


# One Bangkok H2A façade and curtain wall (for tender)

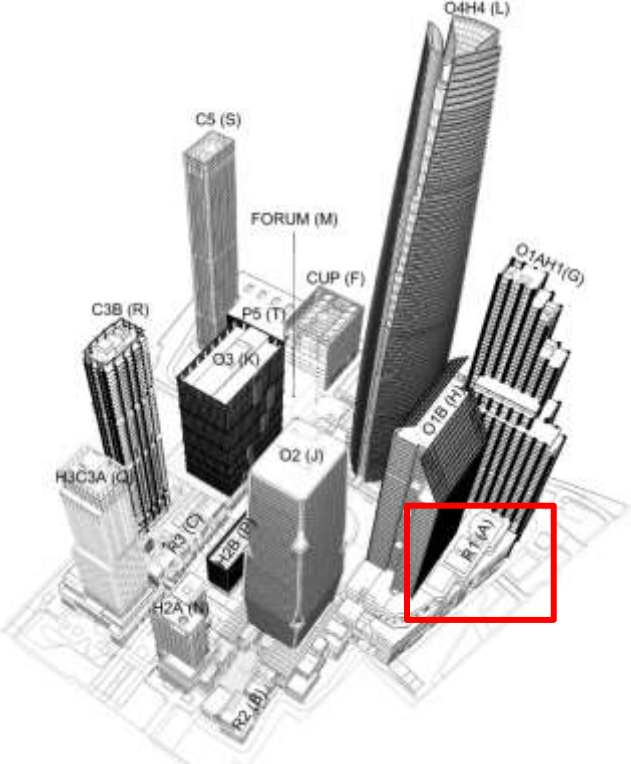
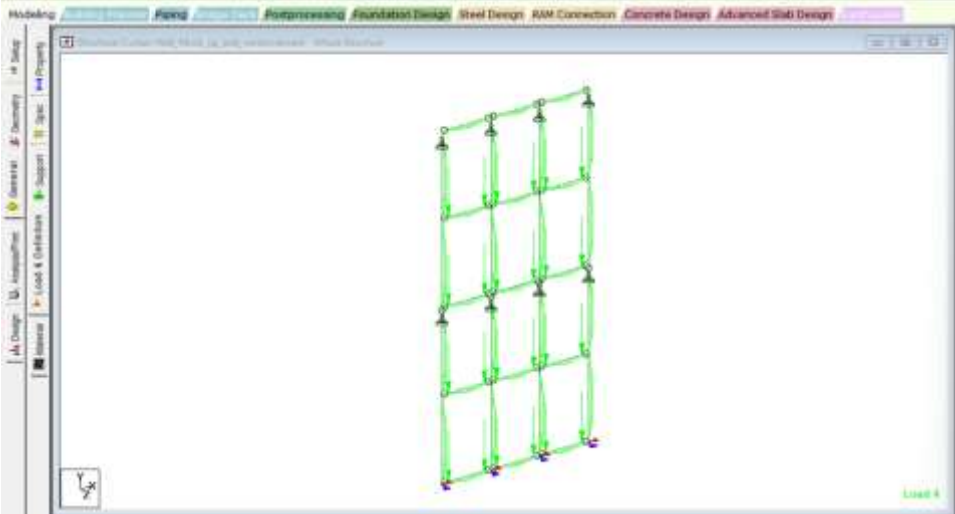
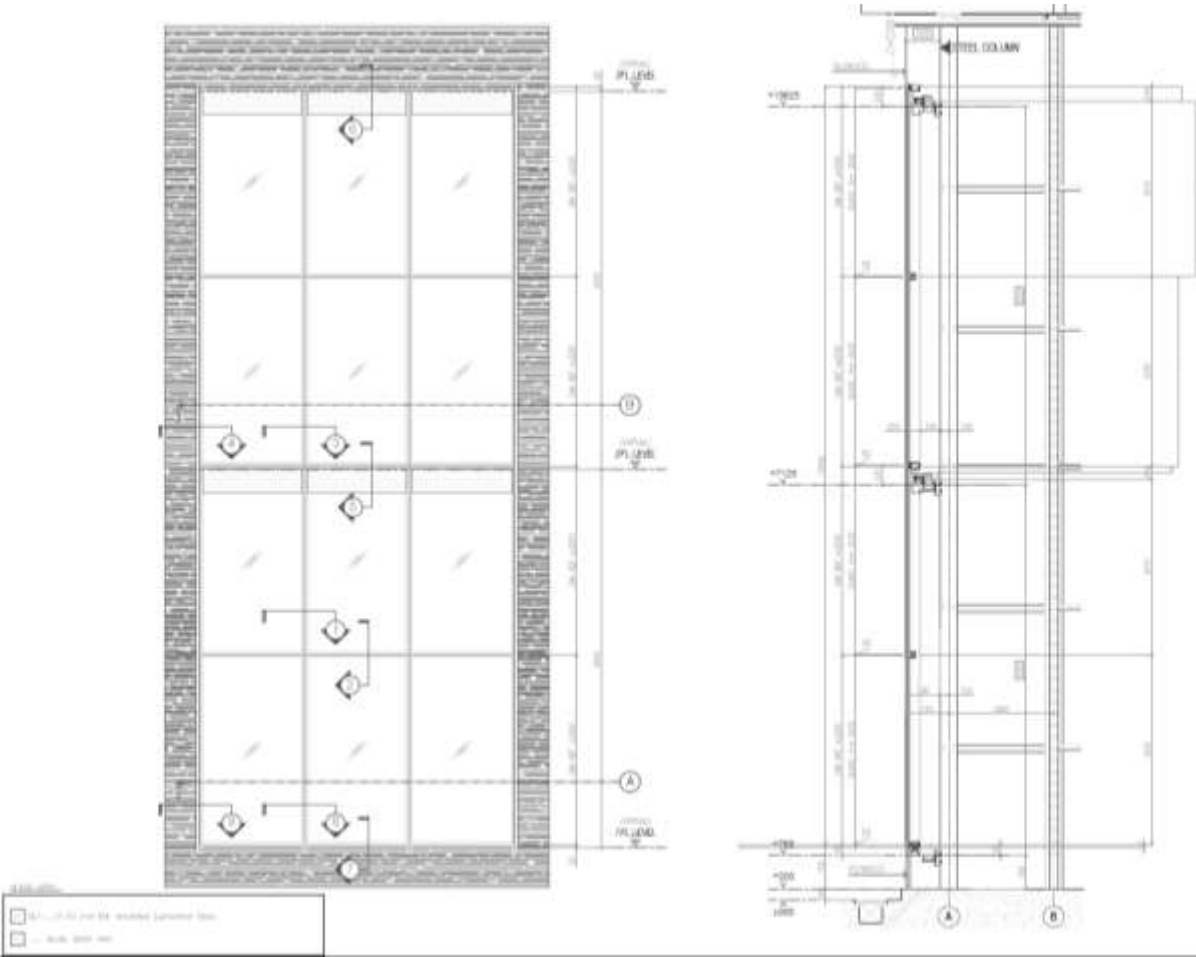


- Type 4 IGU Type 3
- IGU Type 2
- Laminated Type 1
- Laminated (VLT 60%) Laminated
- Glass with back pan (50mm mineral wool insulation (K=0.034 W/m K))

\*All other solid area must incorporate 50 mm mineral wool insulation (K=0.034 W/m K)

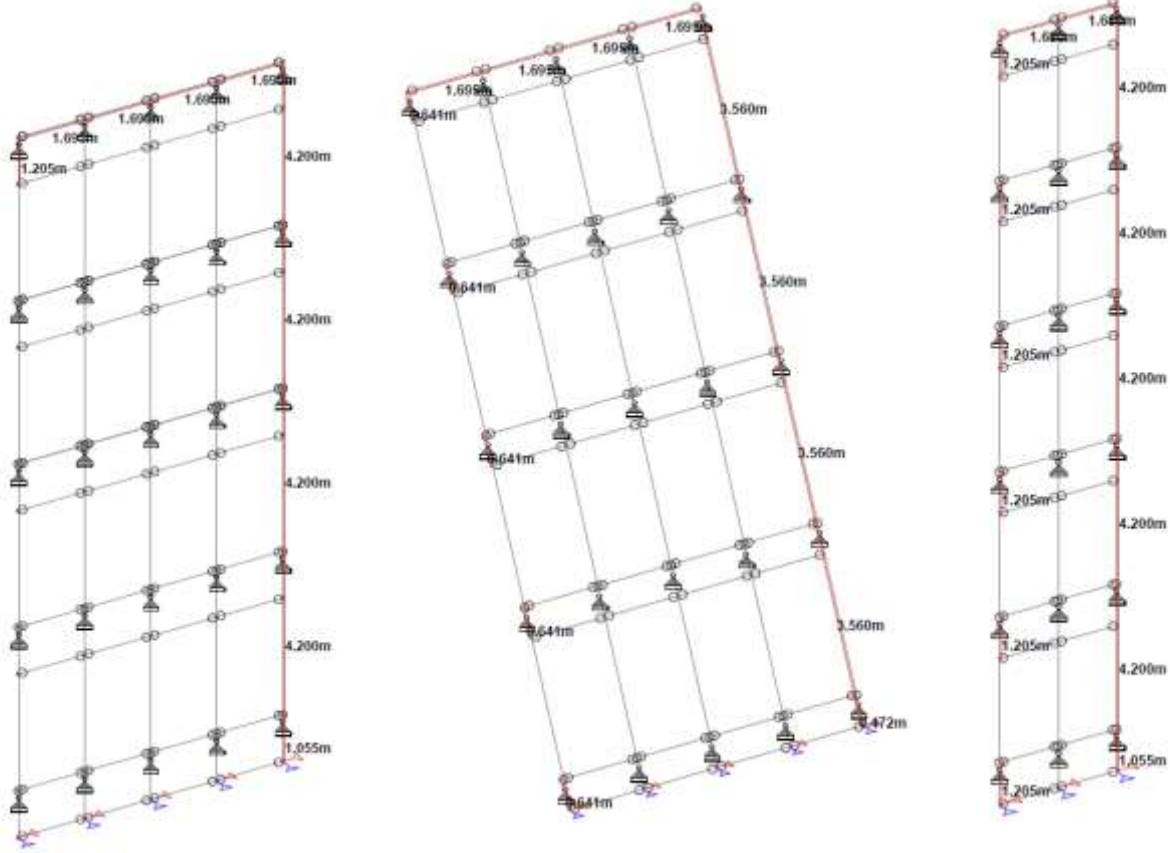


# One Bangkok R1 Typical curtain wall (for performance mockup test)



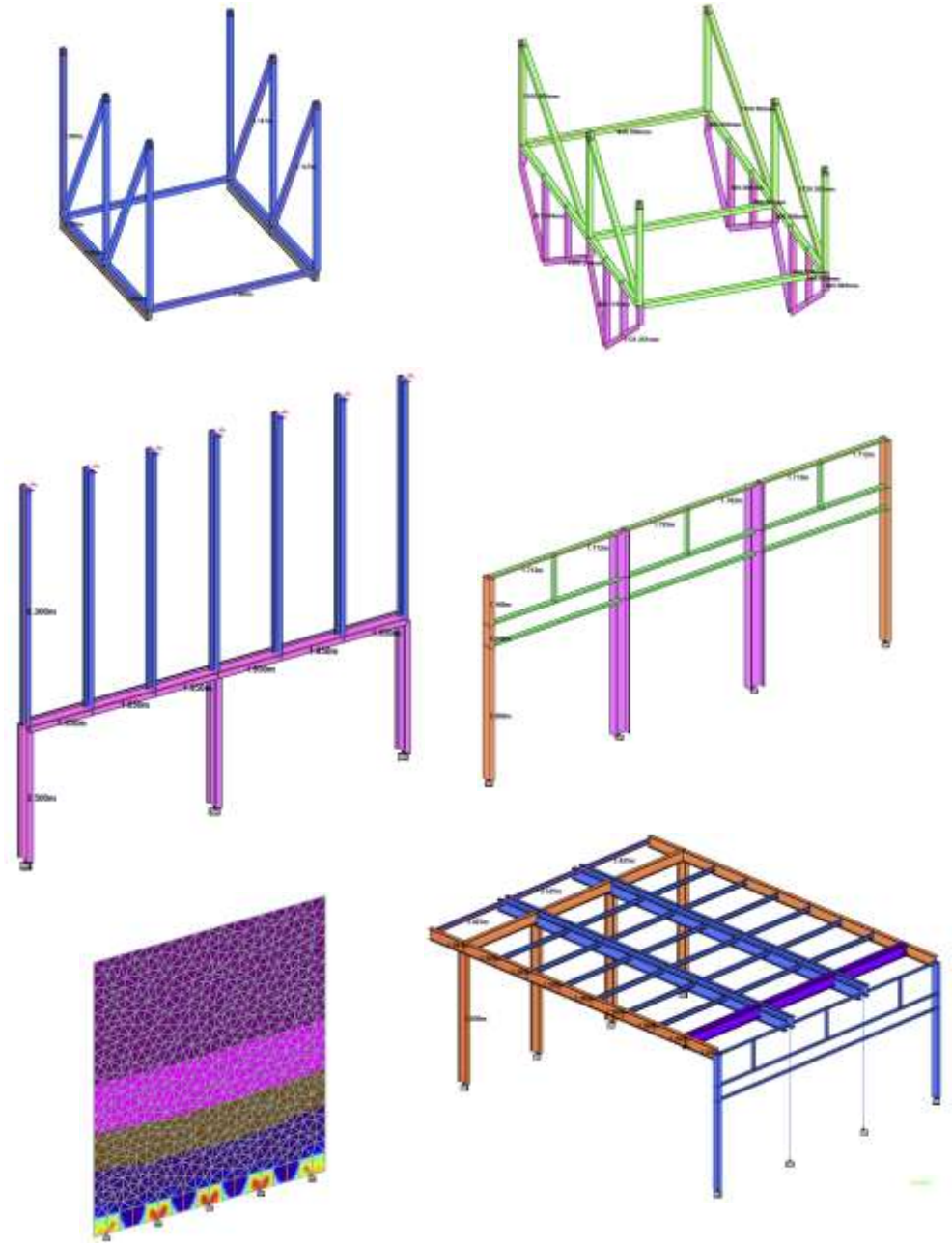
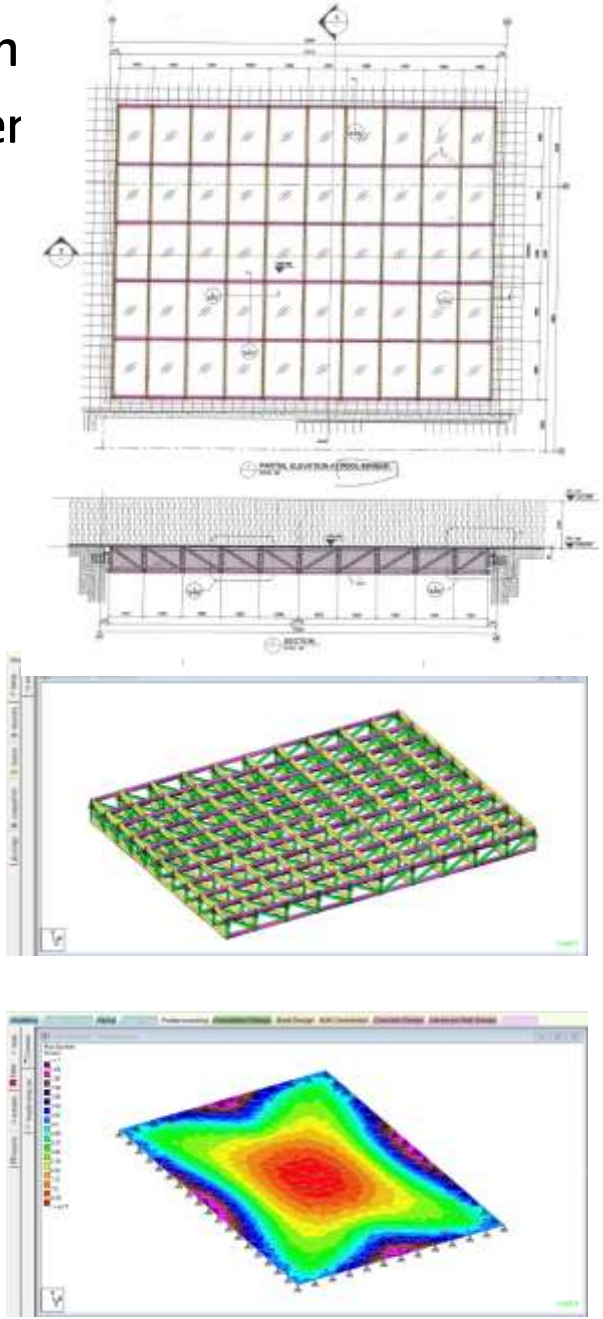


# Boonmitr Silom façade and curtain wall (for tender)

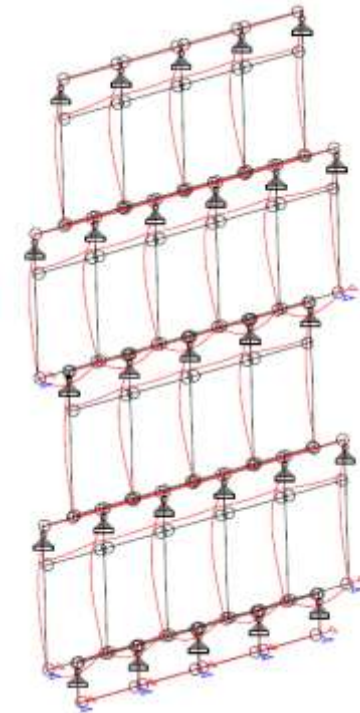
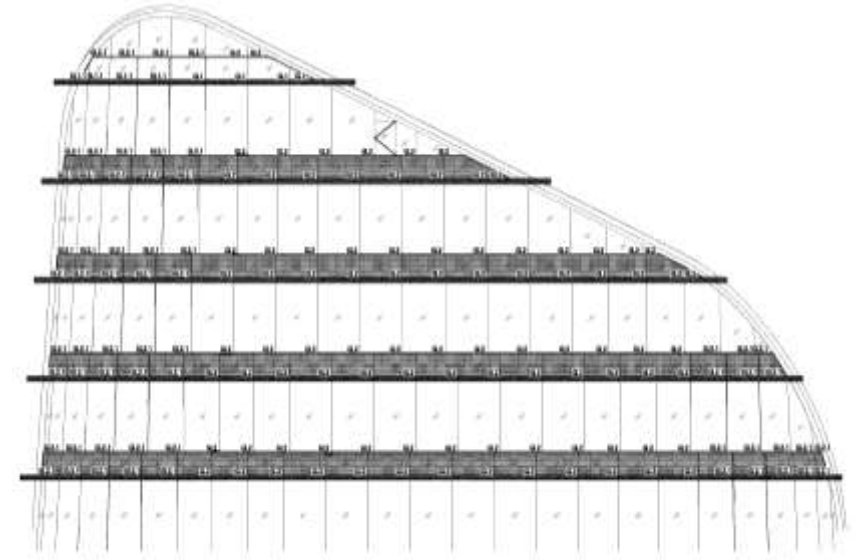




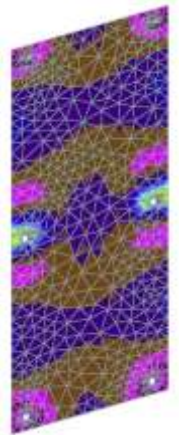
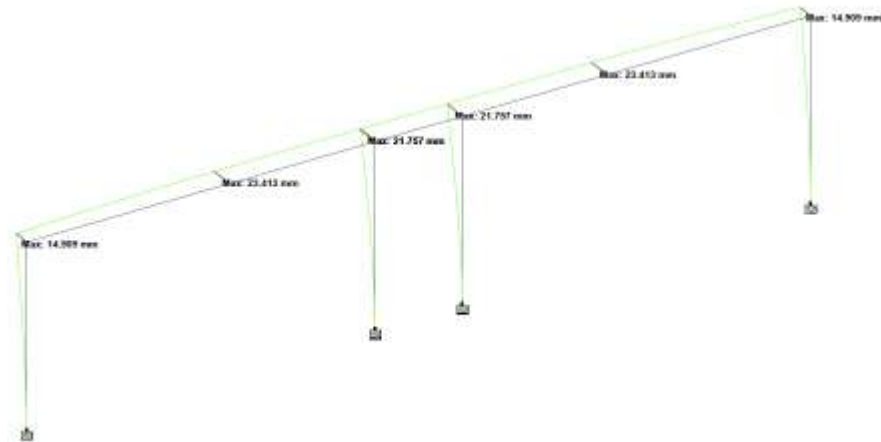
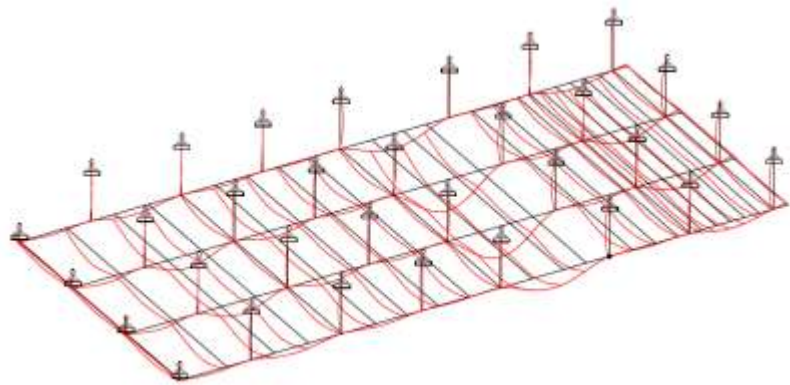
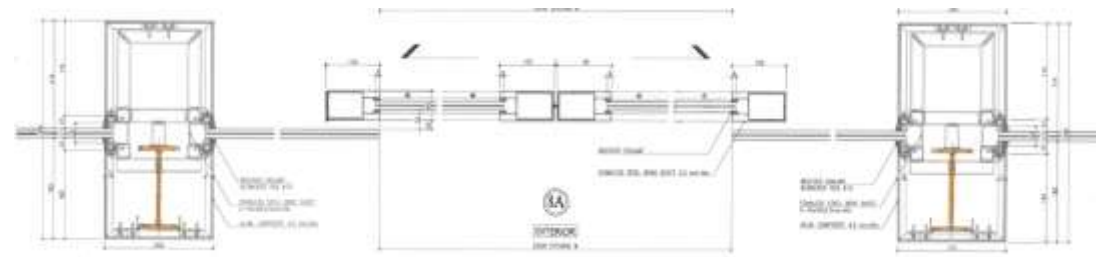
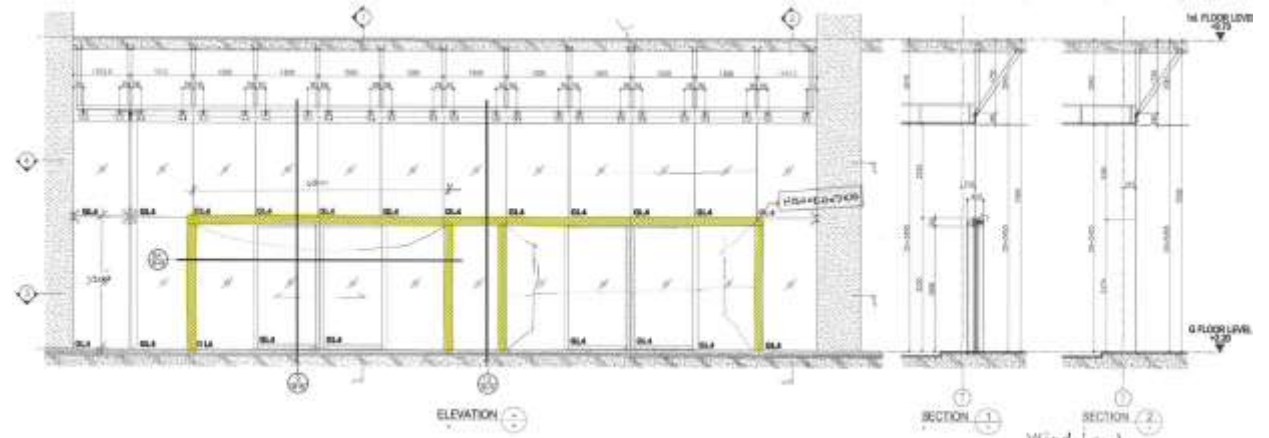
Dusit Central Park façade, curtain  
and swimming pool (for tender



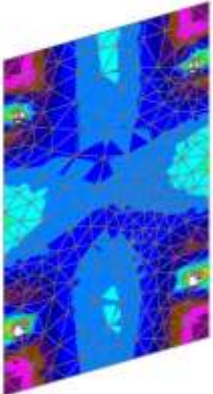
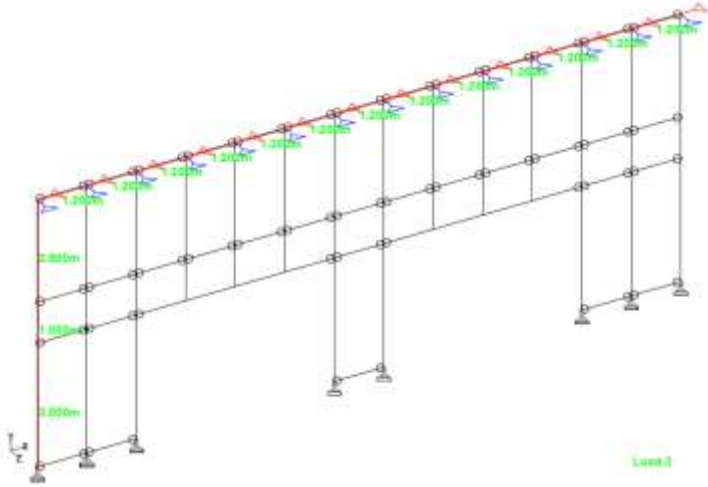
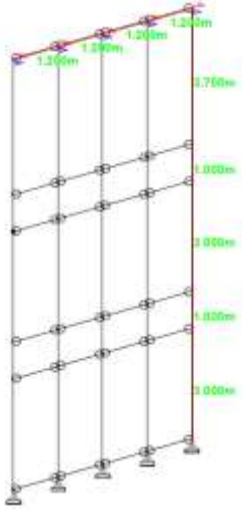
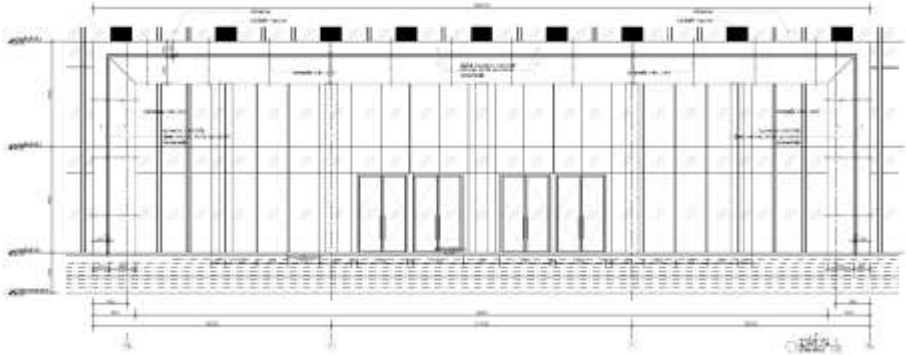
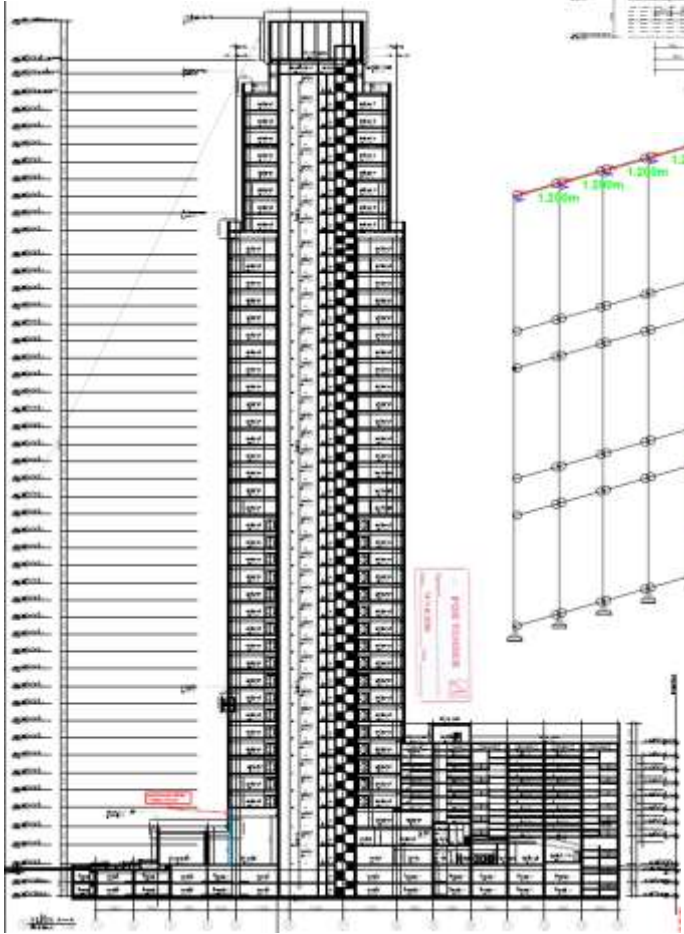
# King Bridge Tower façade and curtain wall (for tender)



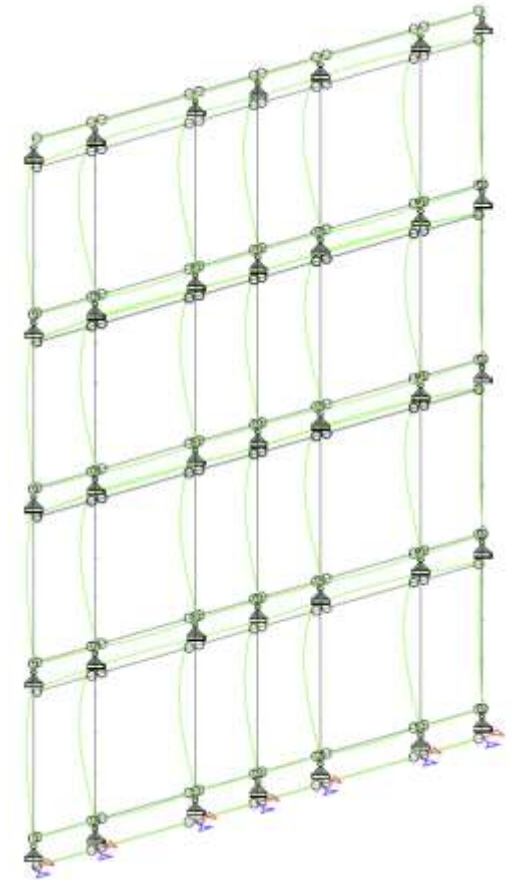
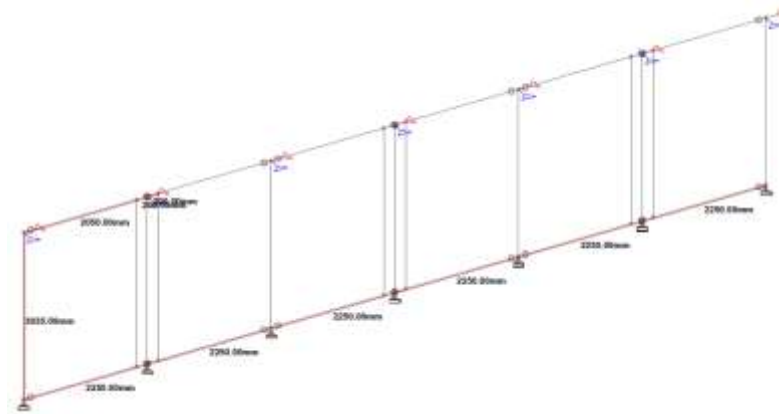
# Queen Sirikit Convention Center façade (for tender)



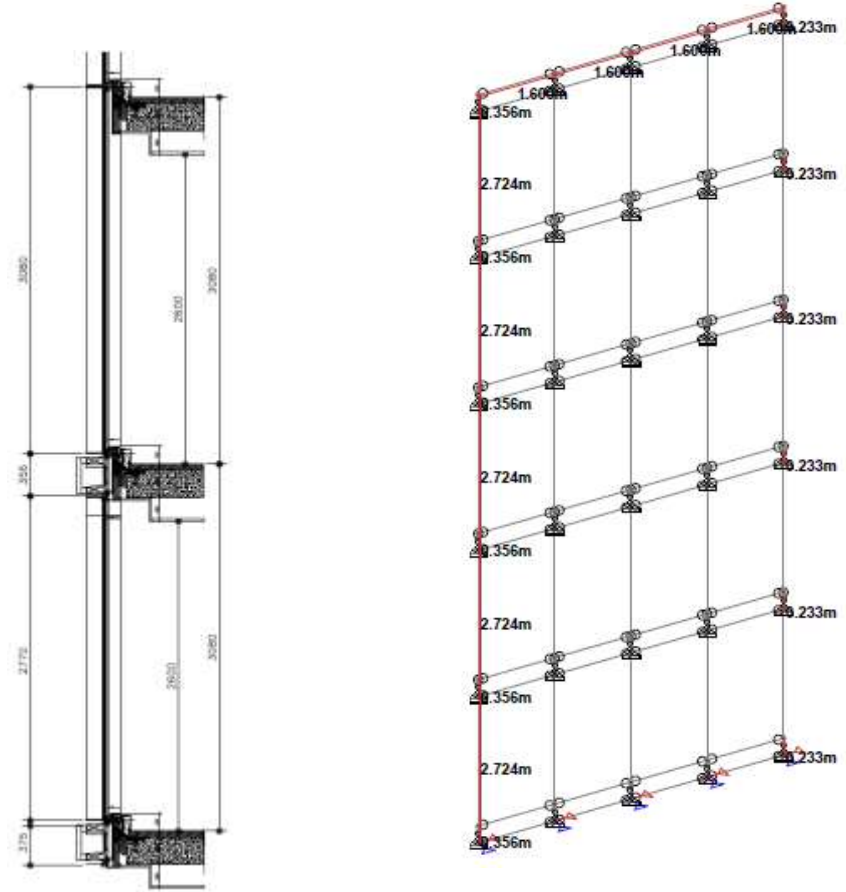
# V44 tower façade and curtain wall (for tender)



# Bangkok Sathorn Hotel façade and curtain wall (for tender)

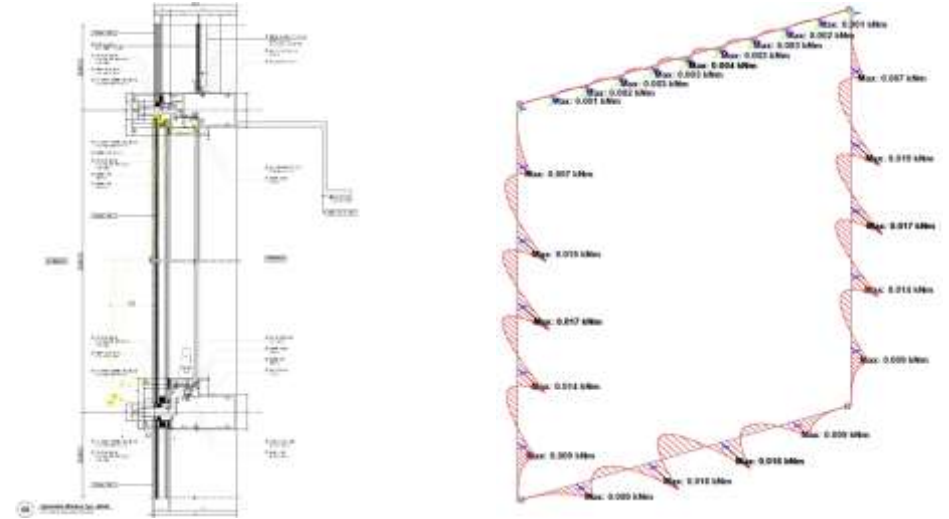
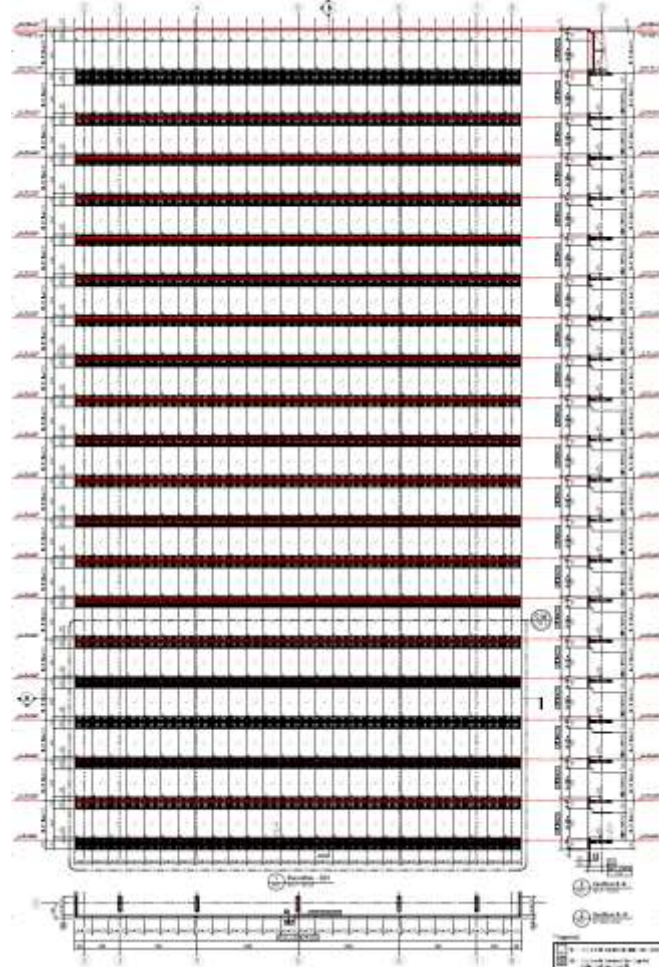


# Dusit D2 Hotel façade and curtain wall (for tender)





# PUNN Tower façade and curtain wall (for tender)



### Glazing Information

Supported Edges:	Four sides simply supported
Shape:	Rectangular
Lite Width:	1710 mm
Lite Height:	2040 mm
Glazing Angle:	90.0 °



### Glazing Construction (Double Glazed Insulating Unit)

<b>Exterior Lite Properties (Laminated)</b>	
Thickness:	12.0 mm
Heat Treatment:	Heat Strengthened
<b>Airspace Properties</b>	
Thickness:	14.0 mm
<b>Interior Lite Properties (Monolithic)</b>	
Thickness:	6.0 mm
Heat Treatment:	Heat Strengthened

### Applied Loads

Description	Load	Duration
Short Duration	2.00 kPa	3.00 sec