

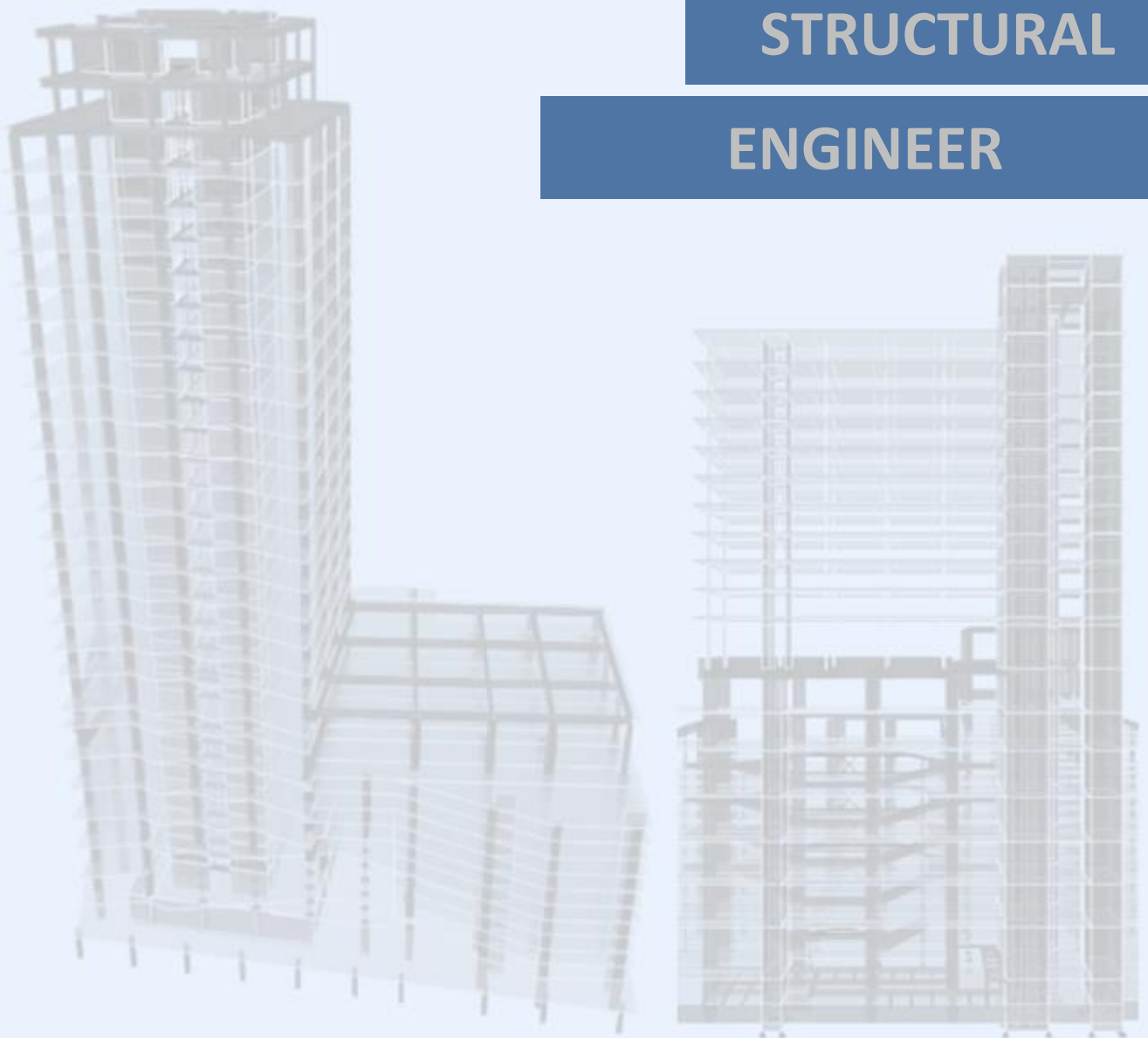
**CHAICHANA
SIRISAPJANAN**

PORTFOLIO

DESIGN

STRUCTURAL

ENGINEER



CH.SIRISAPJANAN@GMAIL.COM

TEL. 095-054-0684

Portfolio

2017 - 2020

Centre Point Terminal 21 Korat



Pic 1 Prepare site of work above retail area on 5th floor for construction hotel tower.



Pic 2 RC. Transfer Beam to change span of column for hotel tower.

Portfolio

2017 - 2020

Centre Point Terminal 21 Korat



Pic 3 Post-Tensioned slab for typical floor



Pic 4 18th Floor for Retail & Hotel Building , Total Height 92.65 m.

Portfolio

2017 - 2020

The Base Saphanmai



Pic 1 Sheet pile with strutting system for construction 2nd Basement floor.



Pic 2 RC. Flat Slab for underground floor and Post-Tensioned slab for typical floor.

Portfolio

2017 - 2020

The Base Saphanmai



Pic 3 Spiral Steel Bridge Link between tower on 15th Floor.

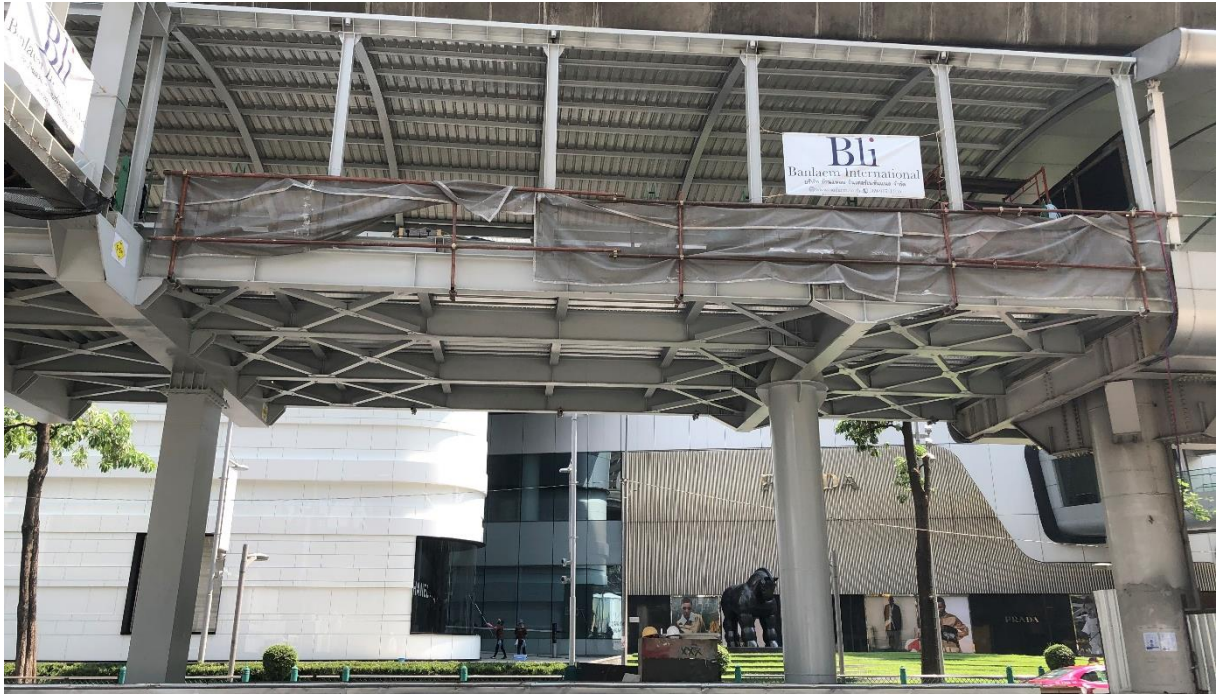


Pic 4 RC. Flat Slab with Band Beam for landscape and swimming pool on 15th Floor.

Portfolio

2017 - 2020

BTS Skylink Krungsri Ploenchit Tower



Pic 1 Steel skylink Platform to BTS Ploenchit Station.



Pic 2 Prepare Steel Vierendeel Truss for 30 m. long span bridge on site.

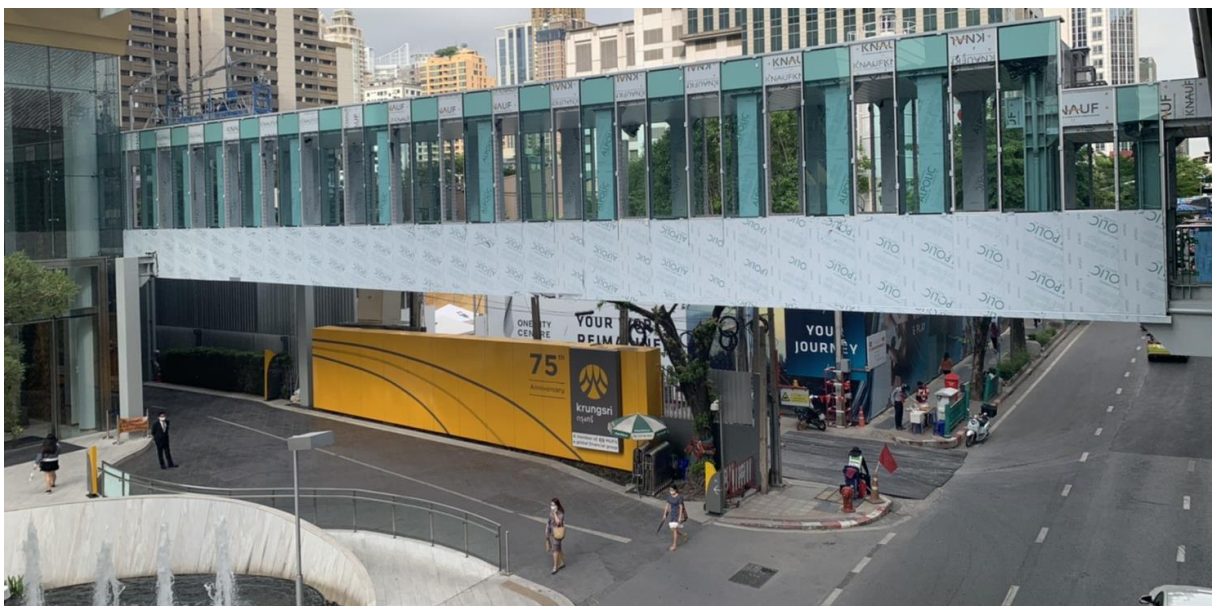
Portfolio

2017 - 2020

BTS Skylink Krungsri Ploenchit Tower



Pic 3 Steel Vierendeel Truss for 30 m. long span bridge above Ploenchit Road.



Pic 4 Composite Metal decking Floor for walkway platform.

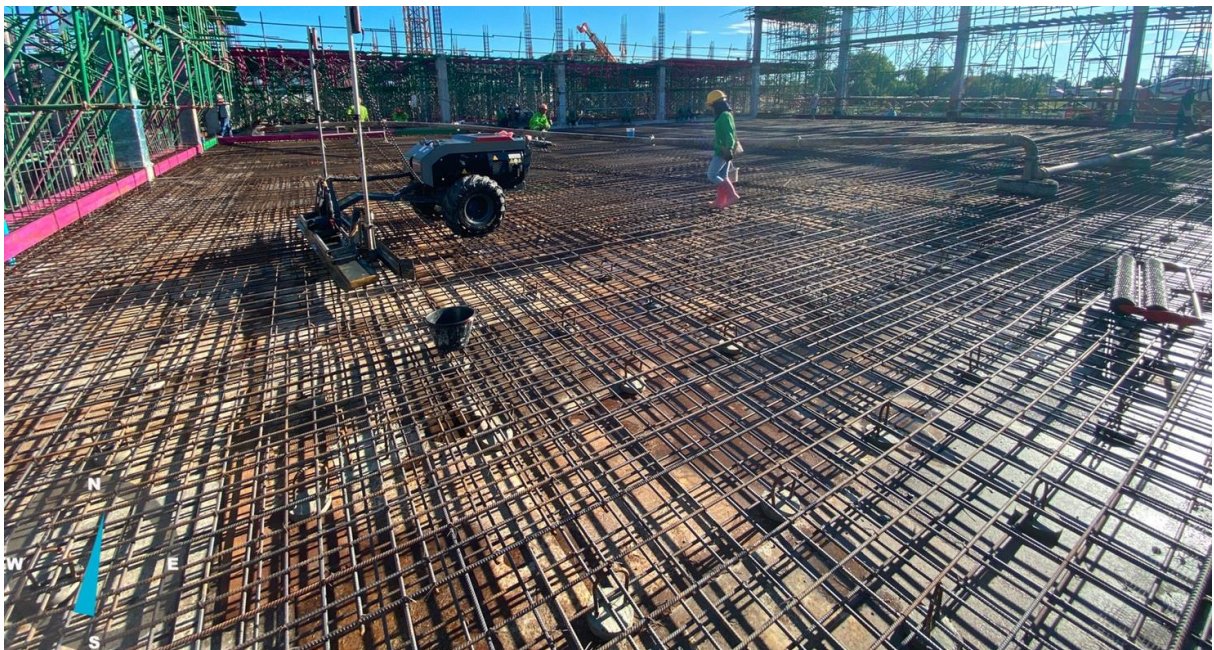
Portfolio

2017 - 2020

CP ALL KORAT



Pic 1 PC. Driven Square Pile for factory and warehouse building.



Pic 2 RC. Flat Slab for factory and warehouse floor.

Portfolio

2017 - 2020

CP ALL KORAT



Pic 3 Steel Truss 30 m. long span for metal sheet roof.



Pic 4 RC. Flat Slab with Topping for freezing zone.