

PORTFOLIO

PONDSUDA WONGPINIJ



PROJECT ARCHITECT

PORTFOLIO



PONDSUDA WONGPINIJ

CURRENT POSITION : **PROJECT ARCHITECT.**
EXPECTED SALARY : **45,000 – 48,000 THB.**

LANGUAGE

Thai
★★★★★

English
★★★★★



CONTACT ME

PHONE
064 192 2497

HOME
102/184 Iris Avenue Condo
Ladkrabang Road
Ladkrabang District
Bangkok 10520 Thailand.

EMAIL
pondsudawongpinij36@gmail.com

FACEBOOK
www.facebook.com/pwongpinij

EDUCATION



THAMMASAT UNIVERSITY.
2011-2014

Bachelor of Science in **Architecture and Planning**, Thammasat University Pathumthani, Thailand .

SEEKAN(Wattanaunuppathum)SCHOOL
2005-2010

Certificate of Secondary Education
SEEKAN(Wattanaunuppathum)SCHOOL
Bangkok ,Thailand.

SKILLS

Auto CAD

Sketch up

Rhino

Photoshop

Illustrator

Lumion

WORKING EXPERIENCE



BLUE WORK DESIGN&DEVELOPMENT CO.,LTD
Feb.2018-Present

Duties & Responsibilities
Project Architect

• Thinking concept & **Design** architecture (**condominium/hotel**) following requirement of **marketing reserch** and concern about feasibility in project

• **Study mass** to see the **feasibility** of the project for forwarding to the BD team. BD Team bring it to present to **developer.**

• Creating architecture design by using specialist computer-aided design(CAD) application Adobe Photoshop ,Sketch up, Lumion,Excel,Power Point presentation.

A-SEVEN CORPORATION CO.,LTD
Feb.2017-Jan.2018

Duties & Responsibilities
Architect

• Thinking concept & **Design** architecture (**housing/clubhouse/main gate**) following requirement of owner .

• Creating architecture design by using specialist computer-aided design(CAD) Adobe Photoshop,Power Point Sketch Up to presentation.

GUILLERMETS CO.,LTD
Aug.2015-Jan2017

Duties & Responsibilities
Interior Designer

• Thinking concept & **Design interior space** following requirement of owner.

• Creating interior design by using specialist computer-aided design(CAD) Adobe Photoshop,Power Point Sketch Up+Vray to presentation.

• Attend a meeting with the owner.

01



AM HOUSE
LANGSUAN
THAILAND

HOUSING
INTERIOR DESIGN

02



AU HOUSE
DONMUANG
THAILAND

HOUSING
INTERIOR DESIGN

03



BOTANIC CITY
PHANOMPHEN
COMBODIA

HOUSING
ARCHITECTURE DESIGN

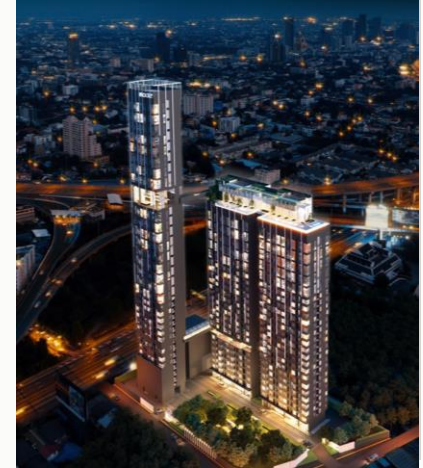
04



BOKORE LA' VILLA
SIEM LEAP
COMBODIA

HOUSING
ARCHITECTURE DESIGN

05



MODIZ
SUKHUMVIT50
THAILAND

HIGHRISE
CONDOMINIUM
ARCHITECTURE DESIGN

06



JW URBAN PARK
DONMAUNG
THAILAND

07



RISE
RACHADA 17
THAILAND

08



ATMOZ
SRIRACHA
THAILAND

09



KAVE EMBRYO
KLONG 6
THAILAND

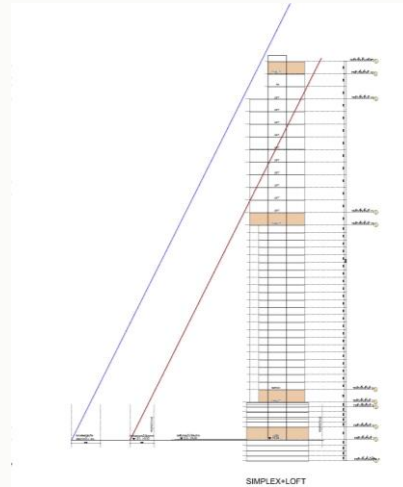
10



KAVE SEED
KASET
THAILAND

FEASIBILITY

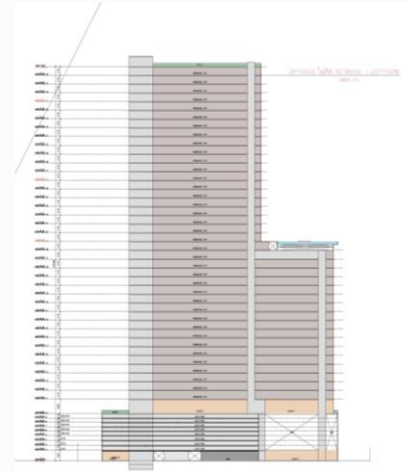
11



S23
SUKHUMVIT23
THAILAND

HIGHRISE
CONDOMINIUM
FEASIBILITY STUDY

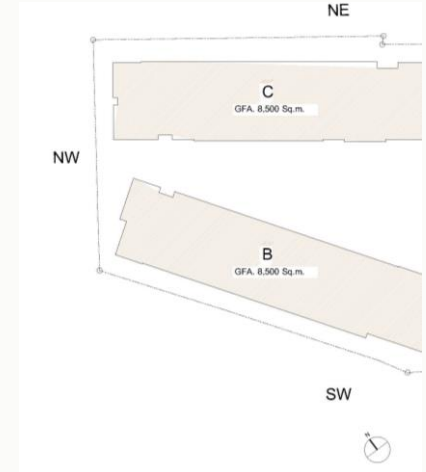
12



CN
CHAREON
NAKHON
THAILAND

HIGHRISE
CONDOMINIUM
FEASIBILITY STUDY

13



BANGMOD 2
BANGMOD
THAILAND

LOWRISE
CONDOMINIUM
FEASIBILITY STUDY



VISUAL CONTINUOUS CONCEPT

LIGHT & SOFT
CONTINUE SPACE
ACCENTS OF WOOD
LUXURY HIGH GROSS

CHINESES
MODERN CONTEMPORARY STYLE

AM HOUSE
LANGSUAN

GROUND FLOOR PLAN



MODERN STYLE
INSIDE OUT – OUTSIDE IN CONCEPT
AU HOUSE
DONMUANG

LIGHT & DARK
ACCENTS OF WOOD
SIMPLE



EMPEROR HOUSE



Approximately usage area of **999 sq.m.**

Comprising 7 bedrooms , parking for 6cars.
And above, amenities to ensure a truly

EMPRESS HOUSE



Approximately usage area of **888 sq.m.**

Comprising 5 bedrooms , parking for 3cars.
And above, amenities to ensure a truly

BOTANIC CITY

PHANOMPEN , COMBODIA



“VERSAILLES PALACE CONCEPT”



BOKORE LA' VILLA

SIEM LEAP COMBODIA

THANSUR BOKOR HILAND RESORT



O ZONE
3 TRIPLE LAYER

Volume **Density**

EFFICIENCY

FAR. = 5 : 1
OSR. = 6 %
LAND AREA = 3-3-13.6 ไร่
(6,054 ตร.ม.)
TOTAL = 36,326.40 ตร.ม.

LAW REGULATION
MODIZ SUKHUMVIT 50

SETBACK BUILDING A & B
กฎกระทรวงที่ 85
ข้อ 45 อาคารที่มีถนนสาธารณะ: 2 ฝั่งอาคารไม่ต่ำกว่า

SETBACK BUILDING C
กฎกระทรวงที่ 89
ข้อ 46 อาคารที่มีถนนสาธารณะ: 2 ฝั่งอาคารไม่ต่ำกว่า

ROOM MIXED & ROOM TYPE

LEGEND:
 ■ PREMIER LOFT
 ■ NORMAL LOFT
 ■ LOFT HALL
 ■ LOFT ROOM TYPE
 ■ NORMAL ROOM TYPE
 ■ FACILITY
 ■ AUTO PARKING



SOAR TO THE SKY
CONCEPT



AREA

SUMMARY

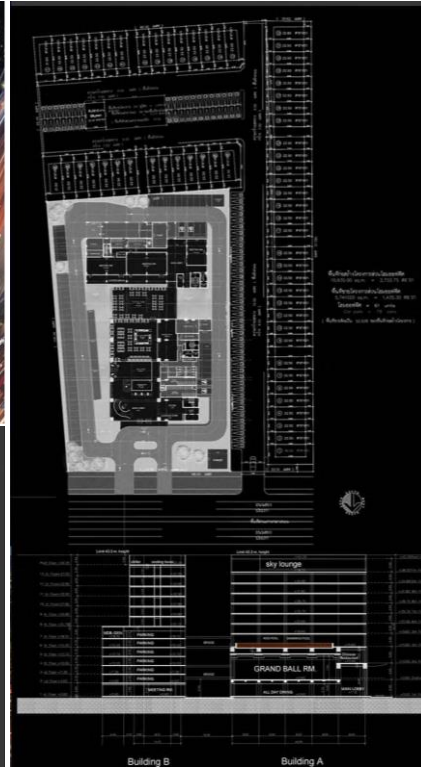
Room Type	Count	Area (sqm)
Deluxe	100	10,000
Suite	50	5,000
Grand Suite	20	2,000
Royal Grand Suite	10	1,000
Superior	30	3,000
Other	10	1,000
Total	210	22,000

FACADE CONCEPT

PAST INTERIOR TRANSITION MODERN ARCHITECTURE

ROOMTYPE

DELUXE SUITE GRAND SUITE ROYAL GRAND SUITE SUPERIOR



JW URBAN PARK

DONMAUNG
THAILAND



RISE RACHADA 17 , THAILAND

CONCEPT
“ THE TRENDY BELONG YOURS “



UNIQUE SELLING POINT

Facilities : 1st Floor

LOBBY A
JURISTIC ROOM
DROP OFF
SECURITY GARDHOUSE
GARDEN

Facilities : 1st Floor

LOBBY B

Facilities : 5th Floor

SWIMMING POOL
CO-WORKING SPACE
FITNESS
GARDEN





CONCEPT

NEW URBAN LIFE (STYLE)
HEALTH | RELAX | FUN | CREATIVE

CONTRAST BUT HARMONIOUS
SHAPE | VERTICAL CURVE

ATMOZ
SRIRACHA
THAILAND

KAVE EMBRYO

KLONG6 , THAILAND

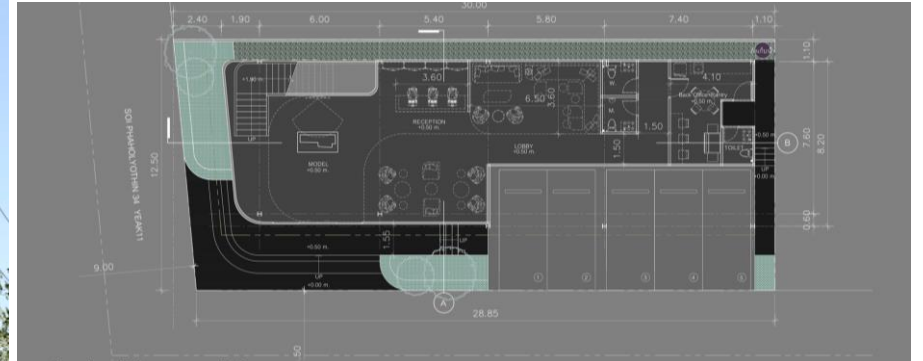
CONCEPT | TRANSFORM

COLOR
PROPOTION
SHAPE



KAVE SEED

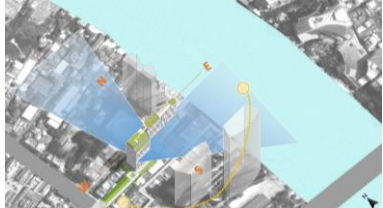
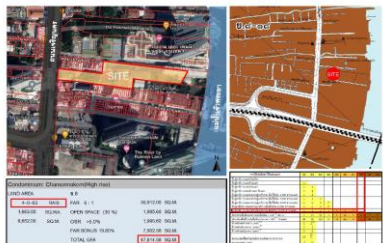
KASET ,THAILAND



1st Floor Plan



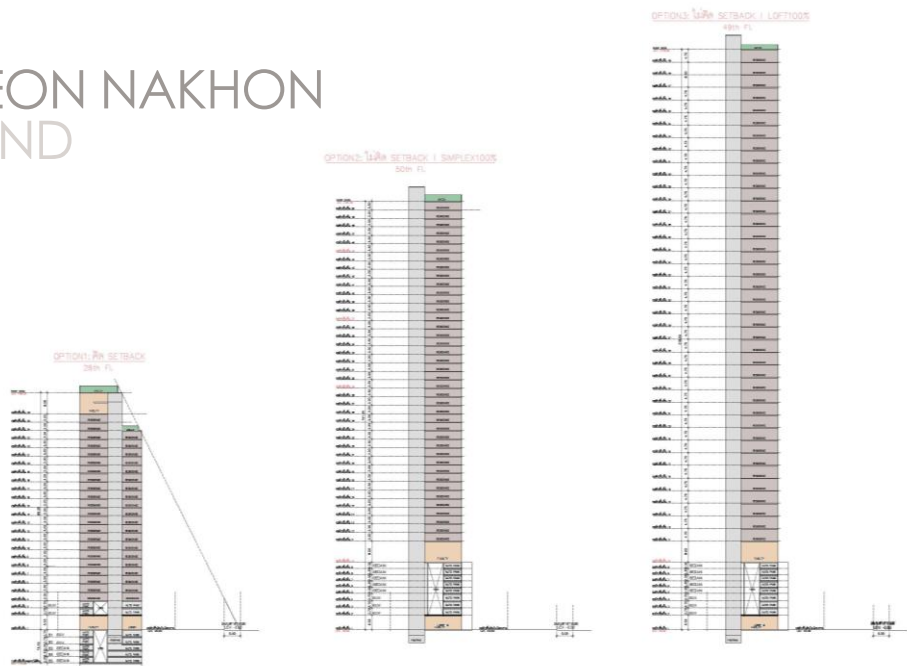
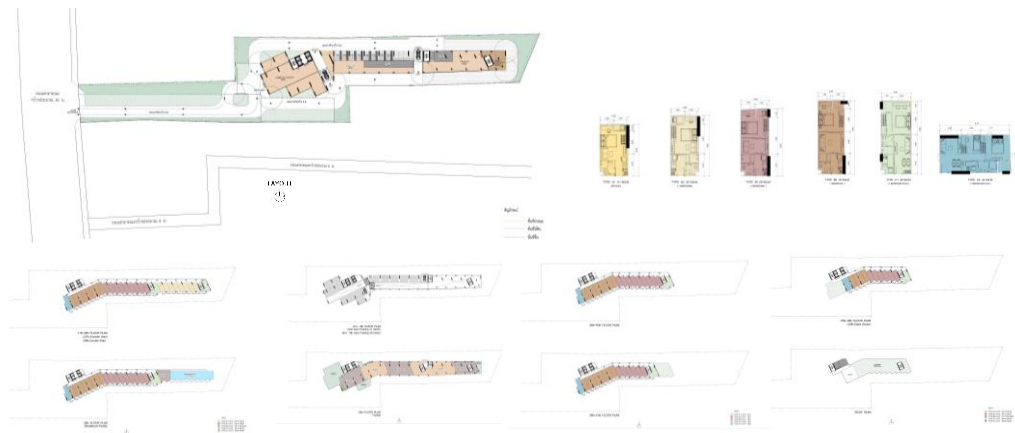
2nd Floor Plan



LAW & REGULATION

CN
CHAREON NAKHON
THAILAND

SITE ANALYSIS



SUMMARY	ปัก SETBACK Simplex 100%	ไม่ปัก SETBACK Simplex 100%	ไม่ปัก SETBACK Loft 100%
GFA	47,749.80 SQ.M	47,742.30 SQ.M	47,806.30 SQ.M
EFF. PER GFA (EXCLUDE LOFT)	67.27%	68.51%	64.77%
NSA (EXCLUDE LOFT)	27,348.00 SQ.M	27,121.00 SQ.M	26,100.00 SQ.M
CFA (EXCLUDE LOFT)	51,384.80 SQ.M	50,240.30 SQ.M	48,841.30 SQ.M
EFF. PER CFA (EXCLUDE LOFT)	63.24%	63.98%	63.80%
EFF. PER GFA (INCLUDE LOFT)			81.25%
NSA (INCLUDE LOFT)			36,631.20 SQ.M
CFA (INCLUDE LOFT)			60,547.50 SQ.M
EFF. PER CFA (INCLUDE LOFT)			60.33%
LEVEL	26 th Floor	50 th Floor	49 th Floor
FLOOR-CEILING	3.2 m	3.2 m	4.75 m
FACILITY	2,636.00 SQ.M (9.64%)	3,270.00 SQ.M (12.06%)	2,770.00 SQ.M (10.55%)
UNITS	948 UNITS	842 UNITS	781 UNITS
AUTO PARKING 100%	394 LOTS (41.58%)	371 LOTS (44.60%)	371 LOTS (48.76%)

BANGMOD 2

BANGMOD, THAILAND

- 175 m. To Metro Food Service
- 250 m. To KMUTT
- 2.4 km. To Chulabhorn Highway Expressway



ลำดับ	เนื้อที่ (ตร.ก.)
1	14.00
2	14.00
3	38.00
4	95.00
5	95.00
6	98.00
7	80.00
8	182.00
9	433.00
10	332.70
รวม	1,381.70

Location	Pracha-U Thit Rd.
Public Mass Transit	-
Land Area	3-3-81.7 Rais (1,381.7 Sq.w.)
Zoning	Orange B.6
Type	Condo (Low Rise)
FAR	4.5
Total Price	
Price/sq.w.	

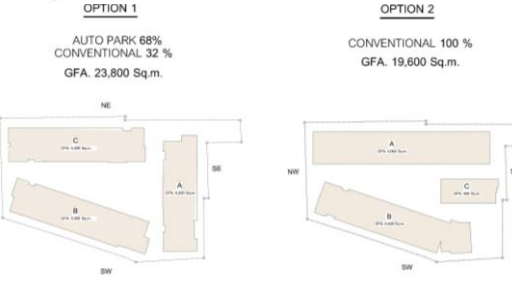
LAW & REGULATION

ข้อกำหนดการใช้ประโยชน์ที่ดินตามกฎหมายกระทรวงให้ใช้บังคับผังเมืองรวมกรุงเทพมหานคร พ.ศ.2556



1. ลักษณะที่ขึ้นประโยชน์ที่ดินประเภท ๒-๖
 ๒. ลักษณะที่ขึ้นประโยชน์ที่ดินประเภท ๒-๖
 ๓. ลักษณะที่ขึ้นประโยชน์ที่ดินประเภท ๒-๖
 ๔. ลักษณะที่ขึ้นประโยชน์ที่ดินประเภท ๒-๖
 ๕. ลักษณะที่ขึ้นประโยชน์ที่ดินประเภท ๒-๖
 ๖. ลักษณะที่ขึ้นประโยชน์ที่ดินประเภท ๒-๖
 ๗. ลักษณะที่ขึ้นประโยชน์ที่ดินประเภท ๒-๖
 ๘. ลักษณะที่ขึ้นประโยชน์ที่ดินประเภท ๒-๖
 ๙. ลักษณะที่ขึ้นประโยชน์ที่ดินประเภท ๒-๖
 ๑๐. ลักษณะที่ขึ้นประโยชน์ที่ดินประเภท ๒-๖

และที่ดินประเภทอยู่อาศัยที่มีพื้นที่ไม่เกิน 30 เมตร และกว่า 10 เมตร
 ส่วนที่ดินประเภทอยู่อาศัยที่มีพื้นที่เกิน 30 เมตร และกว่า 10 เมตร
 ให้เป็น 10,000 ตารางเมตร



OPTION 1	OPTION 2																																																																																																																																																																																																																																																																																																																																																																																																																																																
AUTO PARK 68% CONVENTIONAL 32%	CONVENTIONAL 100%																																																																																																																																																																																																																																																																																																																																																																																																																																																
GFA. 23,800 Sq.m.	GFA. 19,600 Sq.m.																																																																																																																																																																																																																																																																																																																																																																																																																																																
<table border="1"> <tr><th>TYPE</th><th>AREA</th><th>PRICE</th><th>REMARK</th></tr> <tr><td>TYPE A1</td><td>23,800</td><td>32.00</td><td>1,769,600</td></tr> <tr><td>TYPE B1</td><td>23,800</td><td>32.00</td><td>1,769,600</td></tr> <tr><td>TYPE B2</td><td>23,800</td><td>32.00</td><td>1,769,600</td></tr> <tr><td>TYPE C1</td><td>23,800</td><td>32.00</td><td>1,769,600</td></tr> <tr><td>TYPE C2</td><td>23,800</td><td>32.00</td><td>1,769,600</td></tr> <tr><td>TYPE C3</td><td>23,800</td><td>32.00</td><td>1,769,600</td></tr> <tr><td>TYPE C4</td><td>23,800</td><td>32.00</td><td>1,769,600</td></tr> <tr><td>TYPE C5</td><td>23,800</td><td>32.00</td><td>1,769,600</td></tr> <tr><td>TYPE C6</td><td>23,800</td><td>32.00</td><td>1,769,600</td></tr> <tr><td>TYPE C7</td><td>23,800</td><td>32.00</td><td>1,769,600</td></tr> <tr><td>TYPE C8</td><td>23,800</td><td>32.00</td><td>1,769,600</td></tr> <tr><td>TYPE C9</td><td>23,800</td><td>32.00</td><td>1,769,600</td></tr> <tr><td>TYPE C10</td><td>23,800</td><td>32.00</td><td>1,769,600</td></tr> <tr><td>TYPE C11</td><td>23,800</td><td>32.00</td><td>1,769,600</td></tr> <tr><td>TYPE C12</td><td>23,800</td><td>32.00</td><td>1,769,600</td></tr> <tr><td>TYPE C13</td><td>23,800</td><td>32.00</td><td>1,769,600</td></tr> <tr><td>TYPE C14</td><td>23,800</td><td>32.00</td><td>1,769,600</td></tr> <tr><td>TYPE C15</td><td>23,800</td><td>32.00</td><td>1,769,600</td></tr> <tr><td>TYPE C16</td><td>23,800</td><td>32.00</td><td>1,769,600</td></tr> <tr><td>TYPE C17</td><td>23,800</td><td>32.00</td><td>1,769,600</td></tr> <tr><td>TYPE C18</td><td>23,800</td><td>32.00</td><td>1,769,600</td></tr> <tr><td>TYPE C19</td><td>23,800</td><td>32.00</td><td>1,769,600</td></tr> <tr><td>TYPE C20</td><td>23,800</td><td>32.00</td><td>1,769,600</td></tr> <tr><td>TYPE C21</td><td>23,800</td><td>32.00</td><td>1,769,600</td></tr> <tr><td>TYPE C22</td><td>23,800</td><td>32.00</td><td>1,769,600</td></tr> <tr><td>TYPE C23</td><td>23,800</td><td>32.00</td><td>1,769,600</td></tr> <tr><td>TYPE C24</td><td>23,800</td><td>32.00</td><td>1,769,600</td></tr> <tr><td>TYPE C25</td><td>23,800</td><td>32.00</td><td>1,769,600</td></tr> <tr><td>TYPE C26</td><td>23,800</td><td>32.00</td><td>1,769,600</td></tr> <tr><td>TYPE C27</td><td>23,800</td><td>32.00</td><td>1,769,600</td></tr> <tr><td>TYPE C28</td><td>23,800</td><td>32.00</td><td>1,769,600</td></tr> <tr><td>TYPE C29</td><td>23,800</td><td>32.00</td><td>1,769,600</td></tr> <tr><td>TYPE C30</td><td>23,800</td><td>32.00</td><td>1,769,600</td></tr> <tr><td>TYPE C31</td><td>23,800</td><td>32.00</td><td>1,769,600</td></tr> <tr><td>TYPE C32</td><td>23,800</td><td>32.00</td><td>1,769,600</td></tr> <tr><td>TYPE C33</td><td>23,800</td><td>32.00</td><td>1,769,600</td></tr> <tr><td>TYPE C34</td><td>23,800</td><td>32.00</td><td>1,769,600</td></tr> <tr><td>TYPE C35</td><td>23,800</td><td>32.00</td><td>1,769,600</td></tr> <tr><td>TYPE C36</td><td>23,800</td><td>32.00</td><td>1,769,600</td></tr> <tr><td>TYPE C37</td><td>23,800</td><td>32.00</td><td>1,769,600</td></tr> <tr><td>TYPE C38</td><td>23,800</td><td>32.00</td><td>1,769,600</td></tr> <tr><td>TYPE C39</td><td>23,800</td><td>32.00</td><td>1,769,600</td></tr> <tr><td>TYPE C40</td><td>23,800</td><td>32.00</td><td>1,769,600</td></tr> <tr><td>TYPE C41</td><td>23,800</td><td>32.00</td><td>1,769,600</td></tr> <tr><td>TYPE C42</td><td>23,800</td><td>32.00</td><td>1,769,600</td></tr> <tr><td>TYPE C43</td><td>23,800</td><td>32.00</td><td>1,769,600</td></tr> <tr><td>TYPE C44</td><td>23,800</td><td>32.00</td><td>1,769,600</td></tr> <tr><td>TYPE C45</td><td>23,800</td><td>32.00</td><td>1,769,600</td></tr> <tr><td>TYPE C46</td><td>23,800</td><td>32.00</td><td>1,769,600</td></tr> <tr><td>TYPE C47</td><td>23,800</td><td>32.00</td><td>1,769,600</td></tr> <tr><td>TYPE C48</td><td>23,800</td><td>32.00</td><td>1,769,600</td></tr> <tr><td>TYPE C49</td><td>23,800</td><td>32.00</td><td>1,769,600</td></tr> <tr><td>TYPE C50</td><td>23,800</td><td>32.00</td><td>1,769,600</td></tr> </table>	TYPE	AREA	PRICE	REMARK	TYPE A1	23,800	32.00	1,769,600	TYPE B1	23,800	32.00	1,769,600	TYPE B2	23,800	32.00	1,769,600	TYPE C1	23,800	32.00	1,769,600	TYPE C2	23,800	32.00	1,769,600	TYPE C3	23,800	32.00	1,769,600	TYPE C4	23,800	32.00	1,769,600	TYPE C5	23,800	32.00	1,769,600	TYPE C6	23,800	32.00	1,769,600	TYPE C7	23,800	32.00	1,769,600	TYPE C8	23,800	32.00	1,769,600	TYPE C9	23,800	32.00	1,769,600	TYPE C10	23,800	32.00	1,769,600	TYPE C11	23,800	32.00	1,769,600	TYPE C12	23,800	32.00	1,769,600	TYPE C13	23,800	32.00	1,769,600	TYPE C14	23,800	32.00	1,769,600	TYPE C15	23,800	32.00	1,769,600	TYPE C16	23,800	32.00	1,769,600	TYPE C17	23,800	32.00	1,769,600	TYPE C18	23,800	32.00	1,769,600	TYPE C19	23,800	32.00	1,769,600	TYPE C20	23,800	32.00	1,769,600	TYPE C21	23,800	32.00	1,769,600	TYPE C22	23,800	32.00	1,769,600	TYPE C23	23,800	32.00	1,769,600	TYPE C24	23,800	32.00	1,769,600	TYPE C25	23,800	32.00	1,769,600	TYPE C26	23,800	32.00	1,769,600	TYPE C27	23,800	32.00	1,769,600	TYPE C28	23,800	32.00	1,769,600	TYPE C29	23,800	32.00	1,769,600	TYPE C30	23,800	32.00	1,769,600	TYPE C31	23,800	32.00	1,769,600	TYPE C32	23,800	32.00	1,769,600	TYPE C33	23,800	32.00	1,769,600	TYPE C34	23,800	32.00	1,769,600	TYPE C35	23,800	32.00	1,769,600	TYPE C36	23,800	32.00	1,769,600	TYPE C37	23,800	32.00	1,769,600	TYPE C38	23,800	32.00	1,769,600	TYPE C39	23,800	32.00	1,769,600	TYPE C40	23,800	32.00	1,769,600	TYPE C41	23,800	32.00	1,769,600	TYPE C42	23,800	32.00	1,769,600	TYPE C43	23,800	32.00	1,769,600	TYPE C44	23,800	32.00	1,769,600	TYPE C45	23,800	32.00	1,769,600	TYPE C46	23,800	32.00	1,769,600	TYPE C47	23,800	32.00	1,769,600	TYPE C48	23,800	32.00	1,769,600	TYPE C49	23,800	32.00	1,769,600	TYPE C50	23,800	32.00	1,769,600	<table border="1"> <tr><th>TYPE</th><th>AREA</th><th>PRICE</th><th>REMARK</th></tr> <tr><td>TYPE A1</td><td>19,600</td><td>32.00</td><td>627,200</td></tr> <tr><td>TYPE B1</td><td>19,600</td><td>32.00</td><td>627,200</td></tr> <tr><td>TYPE B2</td><td>19,600</td><td>32.00</td><td>627,200</td></tr> <tr><td>TYPE C1</td><td>19,600</td><td>32.00</td><td>627,200</td></tr> <tr><td>TYPE C2</td><td>19,600</td><td>32.00</td><td>627,200</td></tr> <tr><td>TYPE C3</td><td>19,600</td><td>32.00</td><td>627,200</td></tr> <tr><td>TYPE C4</td><td>19,600</td><td>32.00</td><td>627,200</td></tr> <tr><td>TYPE C5</td><td>19,600</td><td>32.00</td><td>627,200</td></tr> <tr><td>TYPE C6</td><td>19,600</td><td>32.00</td><td>627,200</td></tr> <tr><td>TYPE C7</td><td>19,600</td><td>32.00</td><td>627,200</td></tr> <tr><td>TYPE C8</td><td>19,600</td><td>32.00</td><td>627,200</td></tr> <tr><td>TYPE C9</td><td>19,600</td><td>32.00</td><td>627,200</td></tr> <tr><td>TYPE C10</td><td>19,600</td><td>32.00</td><td>627,200</td></tr> <tr><td>TYPE C11</td><td>19,600</td><td>32.00</td><td>627,200</td></tr> <tr><td>TYPE C12</td><td>19,600</td><td>32.00</td><td>627,200</td></tr> <tr><td>TYPE C13</td><td>19,600</td><td>32.00</td><td>627,200</td></tr> <tr><td>TYPE C14</td><td>19,600</td><td>32.00</td><td>627,200</td></tr> <tr><td>TYPE C15</td><td>19,600</td><td>32.00</td><td>627,200</td></tr> <tr><td>TYPE C16</td><td>19,600</td><td>32.00</td><td>627,200</td></tr> <tr><td>TYPE C17</td><td>19,600</td><td>32.00</td><td>627,200</td></tr> <tr><td>TYPE C18</td><td>19,600</td><td>32.00</td><td>627,200</td></tr> <tr><td>TYPE C19</td><td>19,600</td><td>32.00</td><td>627,200</td></tr> <tr><td>TYPE C20</td><td>19,600</td><td>32.00</td><td>627,200</td></tr> <tr><td>TYPE C21</td><td>19,600</td><td>32.00</td><td>627,200</td></tr> <tr><td>TYPE C22</td><td>19,600</td><td>32.00</td><td>627,200</td></tr> <tr><td>TYPE C23</td><td>19,600</td><td>32.00</td><td>627,200</td></tr> <tr><td>TYPE C24</td><td>19,600</td><td>32.00</td><td>627,200</td></tr> <tr><td>TYPE C25</td><td>19,600</td><td>32.00</td><td>627,200</td></tr> <tr><td>TYPE C26</td><td>19,600</td><td>32.00</td><td>627,200</td></tr> <tr><td>TYPE C27</td><td>19,600</td><td>32.00</td><td>627,200</td></tr> <tr><td>TYPE C28</td><td>19,600</td><td>32.00</td><td>627,200</td></tr> <tr><td>TYPE C29</td><td>19,600</td><td>32.00</td><td>627,200</td></tr> <tr><td>TYPE C30</td><td>19,600</td><td>32.00</td><td>627,200</td></tr> <tr><td>TYPE C31</td><td>19,600</td><td>32.00</td><td>627,200</td></tr> <tr><td>TYPE C32</td><td>19,600</td><td>32.00</td><td>627,200</td></tr> <tr><td>TYPE C33</td><td>19,600</td><td>32.00</td><td>627,200</td></tr> <tr><td>TYPE C34</td><td>19,600</td><td>32.00</td><td>627,200</td></tr> <tr><td>TYPE C35</td><td>19,600</td><td>32.00</td><td>627,200</td></tr> <tr><td>TYPE C36</td><td>19,600</td><td>32.00</td><td>627,200</td></tr> <tr><td>TYPE C37</td><td>19,600</td><td>32.00</td><td>627,200</td></tr> <tr><td>TYPE C38</td><td>19,600</td><td>32.00</td><td>627,200</td></tr> <tr><td>TYPE C39</td><td>19,600</td><td>32.00</td><td>627,200</td></tr> <tr><td>TYPE C40</td><td>19,600</td><td>32.00</td><td>627,200</td></tr> <tr><td>TYPE C41</td><td>19,600</td><td>32.00</td><td>627,200</td></tr> <tr><td>TYPE C42</td><td>19,600</td><td>32.00</td><td>627,200</td></tr> <tr><td>TYPE C43</td><td>19,600</td><td>32.00</td><td>627,200</td></tr> <tr><td>TYPE C44</td><td>19,600</td><td>32.00</td><td>627,200</td></tr> <tr><td>TYPE C45</td><td>19,600</td><td>32.00</td><td>627,200</td></tr> <tr><td>TYPE C46</td><td>19,600</td><td>32.00</td><td>627,200</td></tr> <tr><td>TYPE C47</td><td>19,600</td><td>32.00</td><td>627,200</td></tr> <tr><td>TYPE C48</td><td>19,600</td><td>32.00</td><td>627,200</td></tr> <tr><td>TYPE C49</td><td>19,600</td><td>32.00</td><td>627,200</td></tr> <tr><td>TYPE C50</td><td>19,600</td><td>32.00</td><td>627,200</td></tr> </table>	TYPE	AREA	PRICE	REMARK	TYPE A1	19,600	32.00	627,200	TYPE B1	19,600	32.00	627,200	TYPE B2	19,600	32.00	627,200	TYPE C1	19,600	32.00	627,200	TYPE C2	19,600	32.00	627,200	TYPE C3	19,600	32.00	627,200	TYPE C4	19,600	32.00	627,200	TYPE C5	19,600	32.00	627,200	TYPE C6	19,600	32.00	627,200	TYPE C7	19,600	32.00	627,200	TYPE C8	19,600	32.00	627,200	TYPE C9	19,600	32.00	627,200	TYPE C10	19,600	32.00	627,200	TYPE C11	19,600	32.00	627,200	TYPE C12	19,600	32.00	627,200	TYPE C13	19,600	32.00	627,200	TYPE C14	19,600	32.00	627,200	TYPE C15	19,600	32.00	627,200	TYPE C16	19,600	32.00	627,200	TYPE C17	19,600	32.00	627,200	TYPE C18	19,600	32.00	627,200	TYPE C19	19,600	32.00	627,200	TYPE C20	19,600	32.00	627,200	TYPE C21	19,600	32.00	627,200	TYPE C22	19,600	32.00	627,200	TYPE C23	19,600	32.00	627,200	TYPE C24	19,600	32.00	627,200	TYPE C25	19,600	32.00	627,200	TYPE C26	19,600	32.00	627,200	TYPE C27	19,600	32.00	627,200	TYPE C28	19,600	32.00	627,200	TYPE C29	19,600	32.00	627,200	TYPE C30	19,600	32.00	627,200	TYPE C31	19,600	32.00	627,200	TYPE C32	19,600	32.00	627,200	TYPE C33	19,600	32.00	627,200	TYPE C34	19,600	32.00	627,200	TYPE C35	19,600	32.00	627,200	TYPE C36	19,600	32.00	627,200	TYPE C37	19,600	32.00	627,200	TYPE C38	19,600	32.00	627,200	TYPE C39	19,600	32.00	627,200	TYPE C40	19,600	32.00	627,200	TYPE C41	19,600	32.00	627,200	TYPE C42	19,600	32.00	627,200	TYPE C43	19,600	32.00	627,200	TYPE C44	19,600	32.00	627,200	TYPE C45	19,600	32.00	627,200	TYPE C46	19,600	32.00	627,200	TYPE C47	19,600	32.00	627,200	TYPE C48	19,600	32.00	627,200	TYPE C49	19,600	32.00	627,200	TYPE C50	19,600	32.00	627,200
TYPE	AREA	PRICE	REMARK																																																																																																																																																																																																																																																																																																																																																																																																																																														
TYPE A1	23,800	32.00	1,769,600																																																																																																																																																																																																																																																																																																																																																																																																																																														
TYPE B1	23,800	32.00	1,769,600																																																																																																																																																																																																																																																																																																																																																																																																																																														
TYPE B2	23,800	32.00	1,769,600																																																																																																																																																																																																																																																																																																																																																																																																																																														
TYPE C1	23,800	32.00	1,769,600																																																																																																																																																																																																																																																																																																																																																																																																																																														
TYPE C2	23,800	32.00	1,769,600																																																																																																																																																																																																																																																																																																																																																																																																																																														
TYPE C3	23,800	32.00	1,769,600																																																																																																																																																																																																																																																																																																																																																																																																																																														
TYPE C4	23,800	32.00	1,769,600																																																																																																																																																																																																																																																																																																																																																																																																																																														
TYPE C5	23,800	32.00	1,769,600																																																																																																																																																																																																																																																																																																																																																																																																																																														
TYPE C6	23,800	32.00	1,769,600																																																																																																																																																																																																																																																																																																																																																																																																																																														
TYPE C7	23,800	32.00	1,769,600																																																																																																																																																																																																																																																																																																																																																																																																																																														
TYPE C8	23,800	32.00	1,769,600																																																																																																																																																																																																																																																																																																																																																																																																																																														
TYPE C9	23,800	32.00	1,769,600																																																																																																																																																																																																																																																																																																																																																																																																																																														
TYPE C10	23,800	32.00	1,769,600																																																																																																																																																																																																																																																																																																																																																																																																																																														
TYPE C11	23,800	32.00	1,769,600																																																																																																																																																																																																																																																																																																																																																																																																																																														
TYPE C12	23,800	32.00	1,769,600																																																																																																																																																																																																																																																																																																																																																																																																																																														
TYPE C13	23,800	32.00	1,769,600																																																																																																																																																																																																																																																																																																																																																																																																																																														
TYPE C14	23,800	32.00	1,769,600																																																																																																																																																																																																																																																																																																																																																																																																																																														
TYPE C15	23,800	32.00	1,769,600																																																																																																																																																																																																																																																																																																																																																																																																																																														
TYPE C16	23,800	32.00	1,769,600																																																																																																																																																																																																																																																																																																																																																																																																																																														
TYPE C17	23,800	32.00	1,769,600																																																																																																																																																																																																																																																																																																																																																																																																																																														
TYPE C18	23,800	32.00	1,769,600																																																																																																																																																																																																																																																																																																																																																																																																																																														
TYPE C19	23,800	32.00	1,769,600																																																																																																																																																																																																																																																																																																																																																																																																																																														
TYPE C20	23,800	32.00	1,769,600																																																																																																																																																																																																																																																																																																																																																																																																																																														
TYPE C21	23,800	32.00	1,769,600																																																																																																																																																																																																																																																																																																																																																																																																																																														
TYPE C22	23,800	32.00	1,769,600																																																																																																																																																																																																																																																																																																																																																																																																																																														
TYPE C23	23,800	32.00	1,769,600																																																																																																																																																																																																																																																																																																																																																																																																																																														
TYPE C24	23,800	32.00	1,769,600																																																																																																																																																																																																																																																																																																																																																																																																																																														
TYPE C25	23,800	32.00	1,769,600																																																																																																																																																																																																																																																																																																																																																																																																																																														
TYPE C26	23,800	32.00	1,769,600																																																																																																																																																																																																																																																																																																																																																																																																																																														
TYPE C27	23,800	32.00	1,769,600																																																																																																																																																																																																																																																																																																																																																																																																																																														
TYPE C28	23,800	32.00	1,769,600																																																																																																																																																																																																																																																																																																																																																																																																																																														
TYPE C29	23,800	32.00	1,769,600																																																																																																																																																																																																																																																																																																																																																																																																																																														
TYPE C30	23,800	32.00	1,769,600																																																																																																																																																																																																																																																																																																																																																																																																																																														
TYPE C31	23,800	32.00	1,769,600																																																																																																																																																																																																																																																																																																																																																																																																																																														
TYPE C32	23,800	32.00	1,769,600																																																																																																																																																																																																																																																																																																																																																																																																																																														
TYPE C33	23,800	32.00	1,769,600																																																																																																																																																																																																																																																																																																																																																																																																																																														
TYPE C34	23,800	32.00	1,769,600																																																																																																																																																																																																																																																																																																																																																																																																																																														
TYPE C35	23,800	32.00	1,769,600																																																																																																																																																																																																																																																																																																																																																																																																																																														
TYPE C36	23,800	32.00	1,769,600																																																																																																																																																																																																																																																																																																																																																																																																																																														
TYPE C37	23,800	32.00	1,769,600																																																																																																																																																																																																																																																																																																																																																																																																																																														
TYPE C38	23,800	32.00	1,769,600																																																																																																																																																																																																																																																																																																																																																																																																																																														
TYPE C39	23,800	32.00	1,769,600																																																																																																																																																																																																																																																																																																																																																																																																																																														
TYPE C40	23,800	32.00	1,769,600																																																																																																																																																																																																																																																																																																																																																																																																																																														
TYPE C41	23,800	32.00	1,769,600																																																																																																																																																																																																																																																																																																																																																																																																																																														
TYPE C42	23,800	32.00	1,769,600																																																																																																																																																																																																																																																																																																																																																																																																																																														
TYPE C43	23,800	32.00	1,769,600																																																																																																																																																																																																																																																																																																																																																																																																																																														
TYPE C44	23,800	32.00	1,769,600																																																																																																																																																																																																																																																																																																																																																																																																																																														
TYPE C45	23,800	32.00	1,769,600																																																																																																																																																																																																																																																																																																																																																																																																																																														
TYPE C46	23,800	32.00	1,769,600																																																																																																																																																																																																																																																																																																																																																																																																																																														
TYPE C47	23,800	32.00	1,769,600																																																																																																																																																																																																																																																																																																																																																																																																																																														
TYPE C48	23,800	32.00	1,769,600																																																																																																																																																																																																																																																																																																																																																																																																																																														
TYPE C49	23,800	32.00	1,769,600																																																																																																																																																																																																																																																																																																																																																																																																																																														
TYPE C50	23,800	32.00	1,769,600																																																																																																																																																																																																																																																																																																																																																																																																																																														
TYPE	AREA	PRICE	REMARK																																																																																																																																																																																																																																																																																																																																																																																																																																														
TYPE A1	19,600	32.00	627,200																																																																																																																																																																																																																																																																																																																																																																																																																																														
TYPE B1	19,600	32.00	627,200																																																																																																																																																																																																																																																																																																																																																																																																																																														
TYPE B2	19,600	32.00	627,200																																																																																																																																																																																																																																																																																																																																																																																																																																														
TYPE C1	19,600	32.00	627,200																																																																																																																																																																																																																																																																																																																																																																																																																																														
TYPE C2	19,600	32.00	627,200																																																																																																																																																																																																																																																																																																																																																																																																																																														
TYPE C3	19,600	32.00	627,200																																																																																																																																																																																																																																																																																																																																																																																																																																														
TYPE C4	19,600	32.00	627,200																																																																																																																																																																																																																																																																																																																																																																																																																																														
TYPE C5	19,600	32.00	627,200																																																																																																																																																																																																																																																																																																																																																																																																																																														
TYPE C6	19,600	32.00	627,200																																																																																																																																																																																																																																																																																																																																																																																																																																														
TYPE C7	19,600	32.00	627,200																																																																																																																																																																																																																																																																																																																																																																																																																																														
TYPE C8	19,600	32.00	627,200																																																																																																																																																																																																																																																																																																																																																																																																																																														
TYPE C9	19,600	32.00	627,200																																																																																																																																																																																																																																																																																																																																																																																																																																														
TYPE C10	19,600	32.00	627,200																																																																																																																																																																																																																																																																																																																																																																																																																																														
TYPE C11	19,600	32.00	627,200																																																																																																																																																																																																																																																																																																																																																																																																																																														
TYPE C12	19,600	32.00	627,200																																																																																																																																																																																																																																																																																																																																																																																																																																														
TYPE C13	19,600	32.00	627,200																																																																																																																																																																																																																																																																																																																																																																																																																																														
TYPE C14	19,600	32.00	627,200																																																																																																																																																																																																																																																																																																																																																																																																																																														
TYPE C15	19,600	32.00	627,200																																																																																																																																																																																																																																																																																																																																																																																																																																														
TYPE C16	19,600	32.00	627,200																																																																																																																																																																																																																																																																																																																																																																																																																																														
TYPE C17	19,600	32.00	627,200																																																																																																																																																																																																																																																																																																																																																																																																																																														
TYPE C18	19,600	32.00	627,200																																																																																																																																																																																																																																																																																																																																																																																																																																														
TYPE C19	19,600	32.00	627,200																																																																																																																																																																																																																																																																																																																																																																																																																																														
TYPE C20	19,600	32.00	627,200																																																																																																																																																																																																																																																																																																																																																																																																																																														
TYPE C21	19,600	32.00	627,200																																																																																																																																																																																																																																																																																																																																																																																																																																														
TYPE C22	19,600	32.00	627,200																																																																																																																																																																																																																																																																																																																																																																																																																																														
TYPE C23	19,600	32.00	627,200																																																																																																																																																																																																																																																																																																																																																																																																																																														
TYPE C24	19,600	32.00	627,200																																																																																																																																																																																																																																																																																																																																																																																																																																														
TYPE C25	19,600	32.00	627,200																																																																																																																																																																																																																																																																																																																																																																																																																																														
TYPE C26	19,600	32.00	627,200																																																																																																																																																																																																																																																																																																																																																																																																																																														
TYPE C27	19,600	32.00	627,200																																																																																																																																																																																																																																																																																																																																																																																																																																														
TYPE C28	19,600	32.00	627,200																																																																																																																																																																																																																																																																																																																																																																																																																																														
TYPE C29	19,600	32.00	627,200																																																																																																																																																																																																																																																																																																																																																																																																																																														
TYPE C30	19,600	32.00	627,200																																																																																																																																																																																																																																																																																																																																																																																																																																														
TYPE C31	19,600	32.00	627,200																																																																																																																																																																																																																																																																																																																																																																																																																																														
TYPE C32	19,600	32.00	627,200																																																																																																																																																																																																																																																																																																																																																																																																																																														
TYPE C33	19,600	32.00	627,200																																																																																																																																																																																																																																																																																																																																																																																																																																														
TYPE C34	19,600	32.00	627,200																																																																																																																																																																																																																																																																																																																																																																																																																																														
TYPE C35	19,600	32.00	627,200																																																																																																																																																																																																																																																																																																																																																																																																																																														
TYPE C36	19,600	32.00	627,200																																																																																																																																																																																																																																																																																																																																																																																																																																														
TYPE C37	19,600	32.00	627,200																																																																																																																																																																																																																																																																																																																																																																																																																																														
TYPE C38	19,600	32.00	627,200																																																																																																																																																																																																																																																																																																																																																																																																																																														
TYPE C39	19,600	32.00	627,200																																																																																																																																																																																																																																																																																																																																																																																																																																														
TYPE C40	19,600	32.00	627,200																																																																																																																																																																																																																																																																																																																																																																																																																																														
TYPE C41	19,600	32.00	627,200																																																																																																																																																																																																																																																																																																																																																																																																																																														
TYPE C42	19,600	32.00	627,200																																																																																																																																																																																																																																																																																																																																																																																																																																														
TYPE C43	19,600	32.00	627,200																																																																																																																																																																																																																																																																																																																																																																																																																																														
TYPE C44	19,600	32.00	627,200																																																																																																																																																																																																																																																																																																																																																																																																																																														
TYPE C45	19,600	32.00	627,200																																																																																																																																																																																																																																																																																																																																																																																																																																														
TYPE C46	19,600	32.00	627,200																																																																																																																																																																																																																																																																																																																																																																																																																																														
TYPE C47	19,600	32.00	627,200																																																																																																																																																																																																																																																																																																																																																																																																																																														
TYPE C48	19,600	32.00	627,200																																																																																																																																																																																																																																																																																																																																																																																																																																														
TYPE C49	19,600	32.00	627,200																																																																																																																																																																																																																																																																																																																																																																																																																																														
TYPE C50	19,600	32.00	627,200																																																																																																																																																																																																																																																																																																																																																																																																																																														



SUMMARY

CONTACT

**PHONE**

064 192 2497

**HOME**

102/184 Iris Avenue Condo
Ladkrabang Road
Ladkrabang District
Bangkok 10520 Thailand.

**EMAIL**

pondsudawongpinij36@gmail.com

**FACEBOOK**

www.facebook.com/pwongpinij

PONDSUDA
WONGPINIJ