

PORTFOLIO 2021

SUMITRA POSIRI

INTERIOR DESIGNER

CONSTRUCTION DRAWING

FURNITURE DESIGN



SUMITRA POSIRI

INTERIOR DESIGNER

SKILLS

AUTOCAD	● ● ● ● ●
3D MAX	● ● ●
SKETCH UP	● ● ● ●
PHOTOSHOP	● ● ● ● ●
ILLUSTRATOR	● ● ●
MISSION	● ● ● ●
MICROSOFT OFFICE	● ● ● ● ●

HELLO MY NAME IS SUMITRA POSIRI. MY MAIN INTEREST IS DESIGN AND CONSTRUCTION, AS AN INTERIOR, I HAVE THE DESIRE TO WORK THE RELEVANT FIELDS TO DEVELOP A MORE COMPLETE DESIGN.

ABOUT ME



EXPERIENCE

- 2020 INTERIOR DESIGNER AT SLAM DESIGN GROUP
- 2020 SENIOR CAD INTERIOR ARCHITECTURE INSPECTOR
- MANDARA HENTEL HOTEL, SANGKOR
- FIVE SEASONS HOTEL, SANGKOR,
AT CHAO PHRAH ROAD
- 2018-2019 INTERIOR DESIGNER AT ARCHITYPE GROUP HEAD OFFICE
- 2018 INTERIOR DESIGNER AT TM DESIGN
- 2017 INTERIOR AT MANGROVE COMPANY
- 2017 BACHELOR DEGREE IN INTERIOR ARCHITECTURE IN ANUSARA UNIVERSITY OF TECHNOLOGY THAILAND GPA 2.70
- 2012 MAJOR SCORES WITH GPA 3.14 IN ANUSARA SCHOOL, SUPHABUMI
- 2004 SAINT JOHN BAPTIST SCHOOL, SUPHABUMI



081-231-2673

sumitra.posiri@gmail.com

sumitraposiri.com

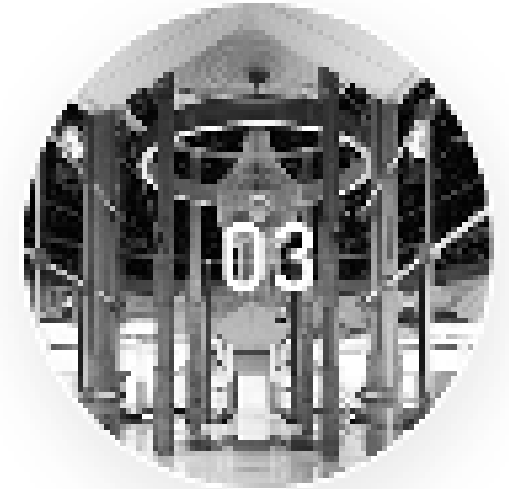




VILLA



APARTMENT



LUXURY HOTEL

CONTENTS



RESIDANCE



RETAIL AND DISPLAY
AND OFFICE BUILDING



FURNITURE DRAWING
AND HAND SKETCH



PRANALUXE VILLA

DEVELOPE DESIGN TO
CONSTRUCTION DRAWING

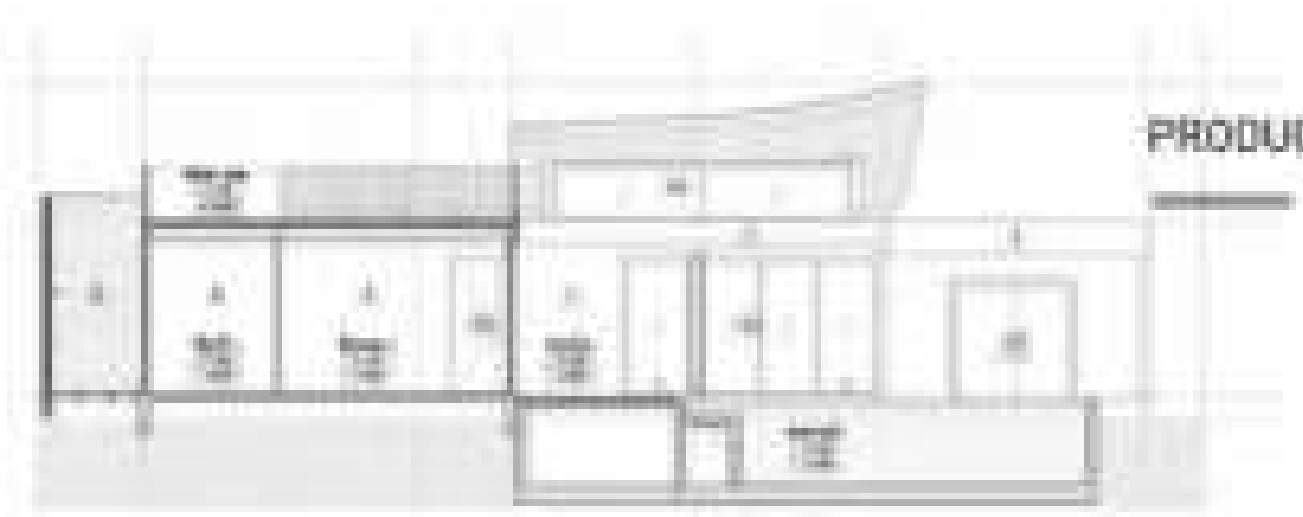
PRACHUAP KHIRI KHAN





LAY-OUT PLAN

INSPIRATION



PRODUCTION





PERSPECTIVE LIVING ROOM

NEW DESIGN TROPICAL MODERN ARCHITECTURE WITH RUSTIC CHARM. THE VILLA EMBRACES POOL AND TROPICAL GARDEN MULTIPLE OUTDOOR SPACES INCLUDING POOL DECKS AND LARGE ROOF-TOP LIVING SPACE. DRAMATIC ROOF FORM IN THE LIVING ROOM OF CURVED TIMBER ROOF.



PERSPECTIVE MASTER BATHROOM

YANGON VILLA

DEVELOPE DESIGN TO
CONSTRUCTION DRAWING

MYANMAR





MODERN STYLE FEATURES CLEAN, CRISP LINES, A SIMPLE COLOUR PALETTE AND THE USE OF MATERIALS THAT CAN INCLUDE METAL, GLASS AND STEEL. MODERN DESIGN EMPLOYS A SENSE OF SIMPLICITY IN EVERY ELEMENT, INCLUDING FURNITURE WITH BLACK AND WHITE DECOR PROVIDING THE ESSENTIAL STARK EFFECT. PRIMARY COLOURS ARE USED VERY SPARINGLY TO BRING CONTRAST.



PLANT WY

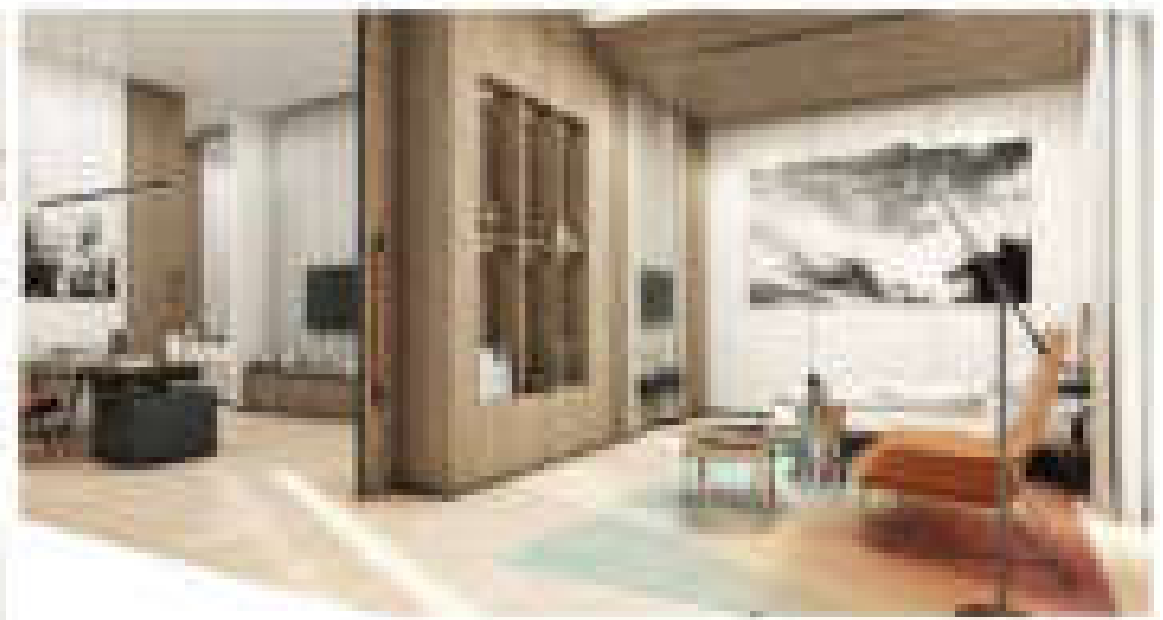


URBAN STYLE VILLA-3

DEVELOPE DESIGN TO
CONSTRUCTION DRAWING

YADAGON, MYNMAR





THE URBAN INTERIOR VILLA MERGES INDUSTRIAL WITH CONTEMPORARY DESIGN, CREATING A MODERN YET GORGEOUSLY DECORATED HOME FEATURING A LIVED-IN SENSE OF CHARM FOR EVERYDAY LIFE BY USING NEUTRAL MATERIALS AND INTRODUCING WARM TONES FEATURING NATURAL STONE FLOORS, EXPOSED TIMBER AND STEEL BEAMS, AND UNFINISHED SURFACES. THE URBAN STYLE LENDS ITSELF TO OPEN PLAN LIVING WHERE SPACES ARE MULTI-FUNCTIONAL AND SPACIOUS.





APARMENT

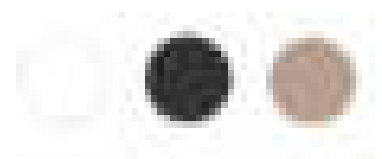
@SUKUMVIT

DEVELOPE DESIGN TO
CONSTRUCTION DRAWING





MODERN STYLE COMBINED WITH NATURE
BRING THE DISTINCTIVE TEXTURE OF WOOD TO
EMPHASIZE THE USE OF BRILLIANTLY BLACK
AND WHITE PALETTE WHITE AND BLACK COLOR
FOR MODERNITY ARRANGED FUNCTION THAT
SUITABLE FOR AREA.



MERCURE HOTEL

DEVELOPE DESIGN TO
CONSTRUCTION DRAWING

KOHCHANG





02

Mood and tone

KOH CHANG HAS ABUNDANT NATURAL PLACE, WATERFALLS, FORESTS, CROPS WILDLIFE AND FISHERMAN'S WAY OF LIFE. THE ISLAND OF THAILAND IS THE TREASURES OF THE TOURIST ISLAND THAT CAME TO KOH CHANG TO EXPERIENCE THEM. THE MERCURE HOTEL WILL ACCEPT TOURISTS AND SHARE VALUABLE TREASURES THROUGH THE DESIGN IN HOTEL WITH MODERN TROPICAL STYLE.





ALL DAY DINING

■

PERSPECTIVE
INTERIOR

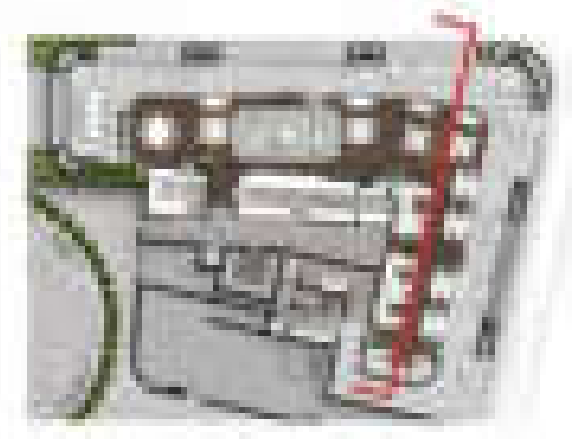




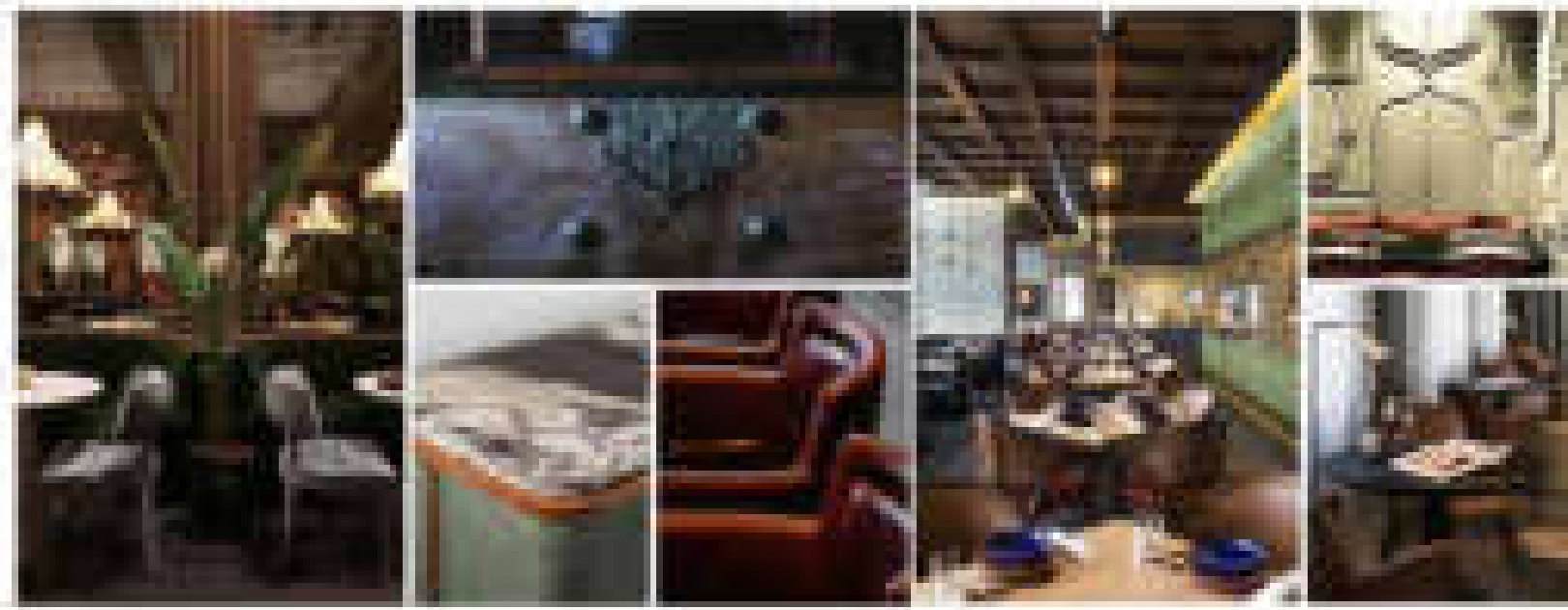
TAJ LONAVLA RESORT@SPA

SCHEMATIC DESIGN TO
DESIGN DEVELOP

INDIA







DESIGN DEVELOP



SAFFRON CEBU

PHILIPPINE

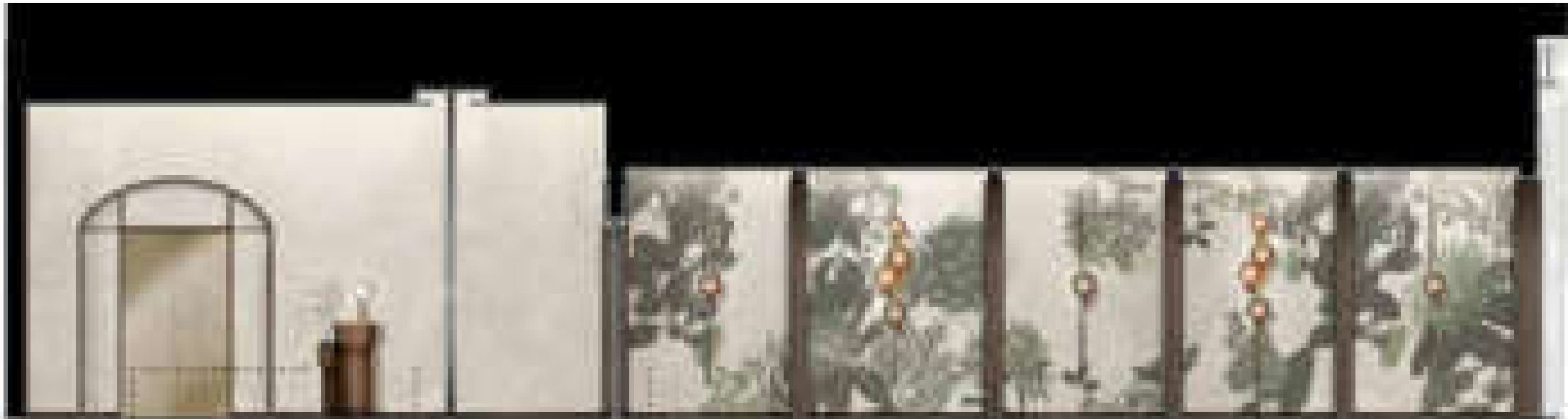
SCHEMATIC DESIGN



1.00m
 2.00m
 3.00m
 4.00m
 5.00m
 6.00m
 7.00m
 8.00m
 9.00m
 10.00m
 11.00m
 12.00m
 13.00m
 14.00m
 15.00m
 16.00m
 17.00m
 18.00m
 19.00m
 20.00m
 21.00m
 22.00m
 23.00m
 24.00m
 25.00m
 26.00m
 27.00m
 28.00m
 29.00m
 30.00m
 31.00m
 32.00m
 33.00m
 34.00m
 35.00m
 36.00m
 37.00m
 38.00m
 39.00m
 40.00m
 41.00m
 42.00m
 43.00m
 44.00m
 45.00m
 46.00m
 47.00m
 48.00m
 49.00m
 50.00m
 51.00m
 52.00m
 53.00m
 54.00m
 55.00m
 56.00m
 57.00m
 58.00m
 59.00m
 60.00m
 61.00m
 62.00m
 63.00m
 64.00m
 65.00m
 66.00m
 67.00m
 68.00m
 69.00m
 70.00m
 71.00m
 72.00m
 73.00m
 74.00m
 75.00m
 76.00m
 77.00m
 78.00m
 79.00m
 80.00m
 81.00m
 82.00m
 83.00m
 84.00m
 85.00m
 86.00m
 87.00m
 88.00m
 89.00m
 90.00m
 91.00m
 92.00m
 93.00m
 94.00m
 95.00m
 96.00m
 97.00m
 98.00m
 99.00m
 100.00m



1.00m
 2.00m
 3.00m
 4.00m
 5.00m
 6.00m
 7.00m
 8.00m
 9.00m
 10.00m
 11.00m
 12.00m
 13.00m
 14.00m
 15.00m
 16.00m
 17.00m
 18.00m
 19.00m
 20.00m
 21.00m
 22.00m
 23.00m
 24.00m
 25.00m
 26.00m
 27.00m
 28.00m
 29.00m
 30.00m
 31.00m
 32.00m
 33.00m
 34.00m
 35.00m
 36.00m
 37.00m
 38.00m
 39.00m
 40.00m
 41.00m
 42.00m
 43.00m
 44.00m
 45.00m
 46.00m
 47.00m
 48.00m
 49.00m
 50.00m
 51.00m
 52.00m
 53.00m
 54.00m
 55.00m
 56.00m
 57.00m
 58.00m
 59.00m
 60.00m
 61.00m
 62.00m
 63.00m
 64.00m
 65.00m
 66.00m
 67.00m
 68.00m
 69.00m
 70.00m
 71.00m
 72.00m
 73.00m
 74.00m
 75.00m
 76.00m
 77.00m
 78.00m
 79.00m
 80.00m
 81.00m
 82.00m
 83.00m
 84.00m
 85.00m
 86.00m
 87.00m
 88.00m
 89.00m
 90.00m
 91.00m
 92.00m
 93.00m
 94.00m
 95.00m
 96.00m
 97.00m
 98.00m
 99.00m
 100.00m



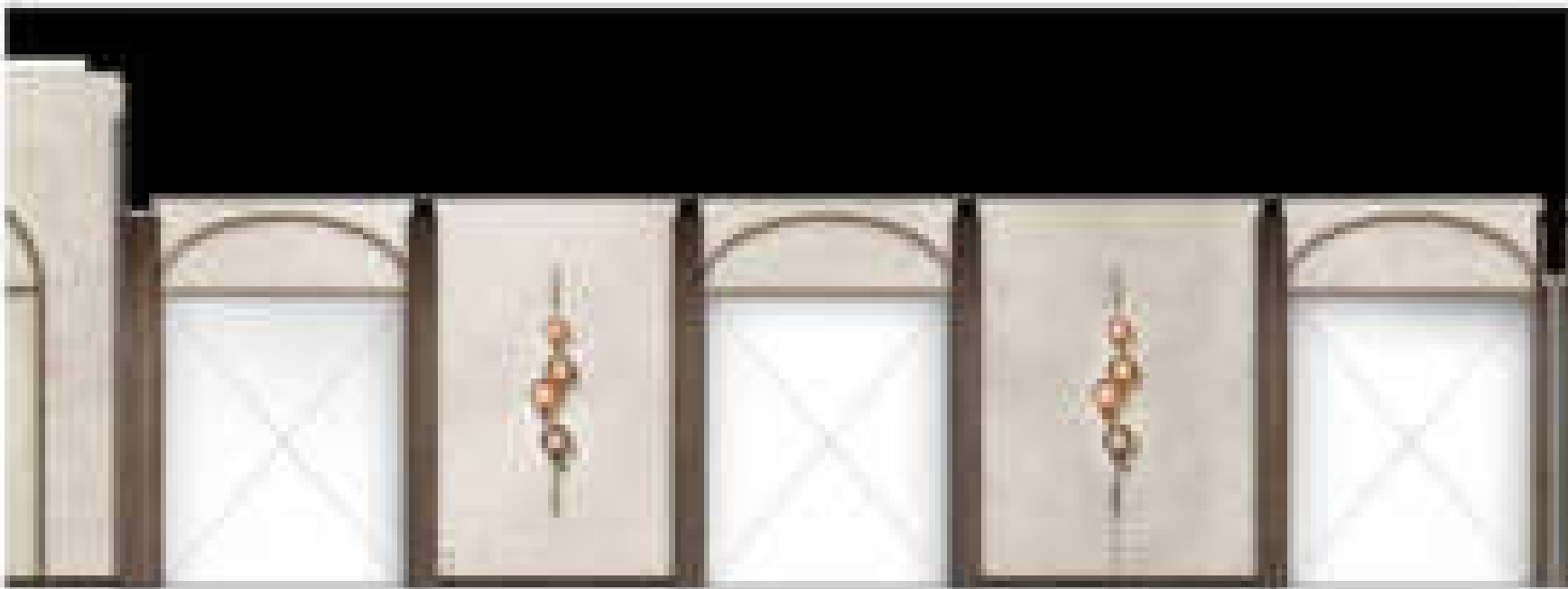
Architectural elevation rendering of a building facade.

Architectural elevation rendering of a building facade.

Architectural elevation rendering of a building facade.

Architectural elevation rendering of a building facade.

Architectural elevation rendering of a building facade.



Architectural elevation rendering of a building facade.

Architectural elevation rendering of a building facade.

Architectural elevation rendering of a building facade.



Architectural elevation rendering of a building facade.



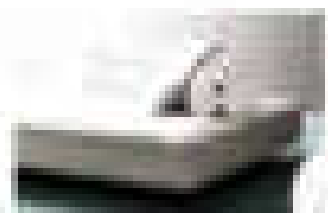
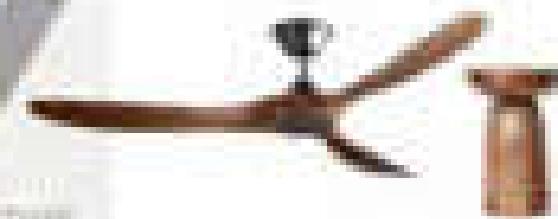
ALILA MAITON

CONCEPT DESIGN

PHUKET



MAITON ISLAND IS A PRIVATELY OWNED ISLAND, ALLOWING VISITORS TO HAVE AN UNMATCHED PERSONAL ISLAND GATEWAY CELEBRATING ISLAND'S NATURAL BEAUTY WHILE ALSO HAVING ACCESS TO A CURATED EXPERIENCE THAT CAN ONLY BE FOUND ON MAITON.



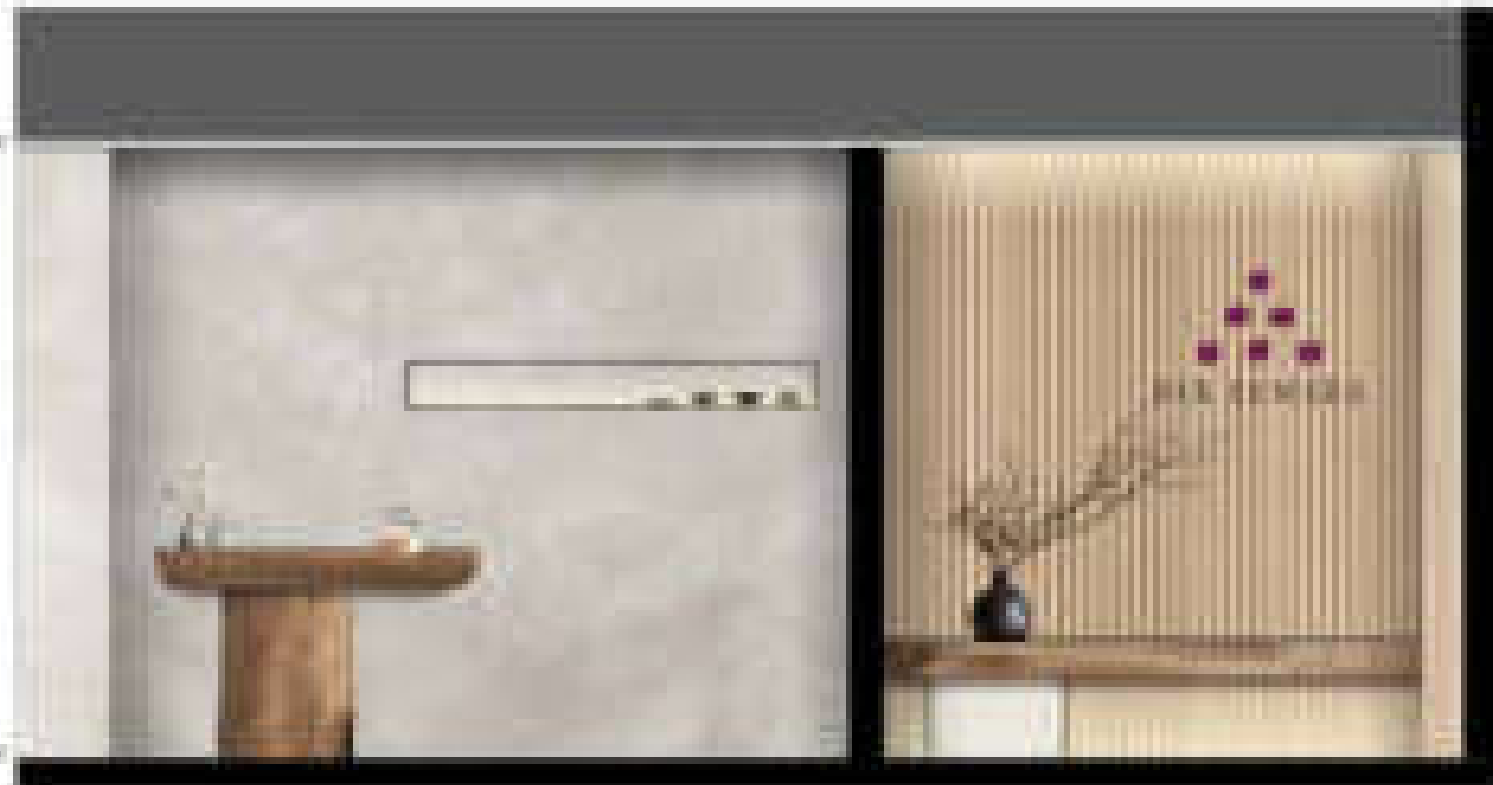




SIXSENSE

KYOTO

SCHEMATIC DESIGN



CONCEPTUAL DESIGN

HEALING WATER

IN JAPAN, BATHING ENCOURAGES A MEDITATIVE APPROACH, OFFERING A SLOW OF BENEFITS FOR PHYSICAL AND MENTAL WELL-BEING. THE HEALING ELEMENTS OF WATER ARE NOT ONLY RESTRICTED TO SOAKING IN IT BUT ALSO BEING NEAR WATER IN MOTION PRODUCES ABUNDANT NEGATIVE IONS, BRINGING MORE ENERGY AND VITALITY. THE SPA IS A SPACE WHERE ONE CAN REFLECT PEACEFULLY AND RELAX AND RECHARGE.







PLAN BIOHACC LOUNGE



FURNITURE SECTION



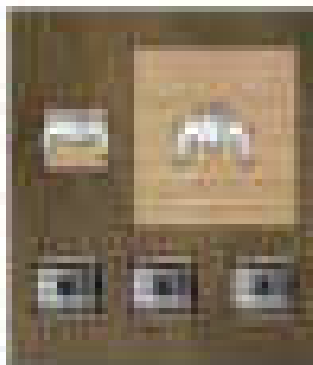
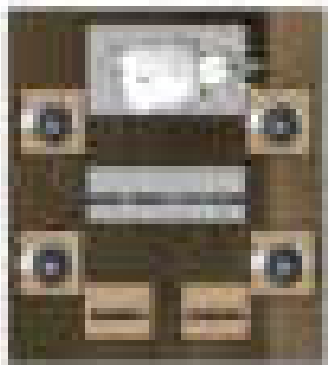
ELEVATION



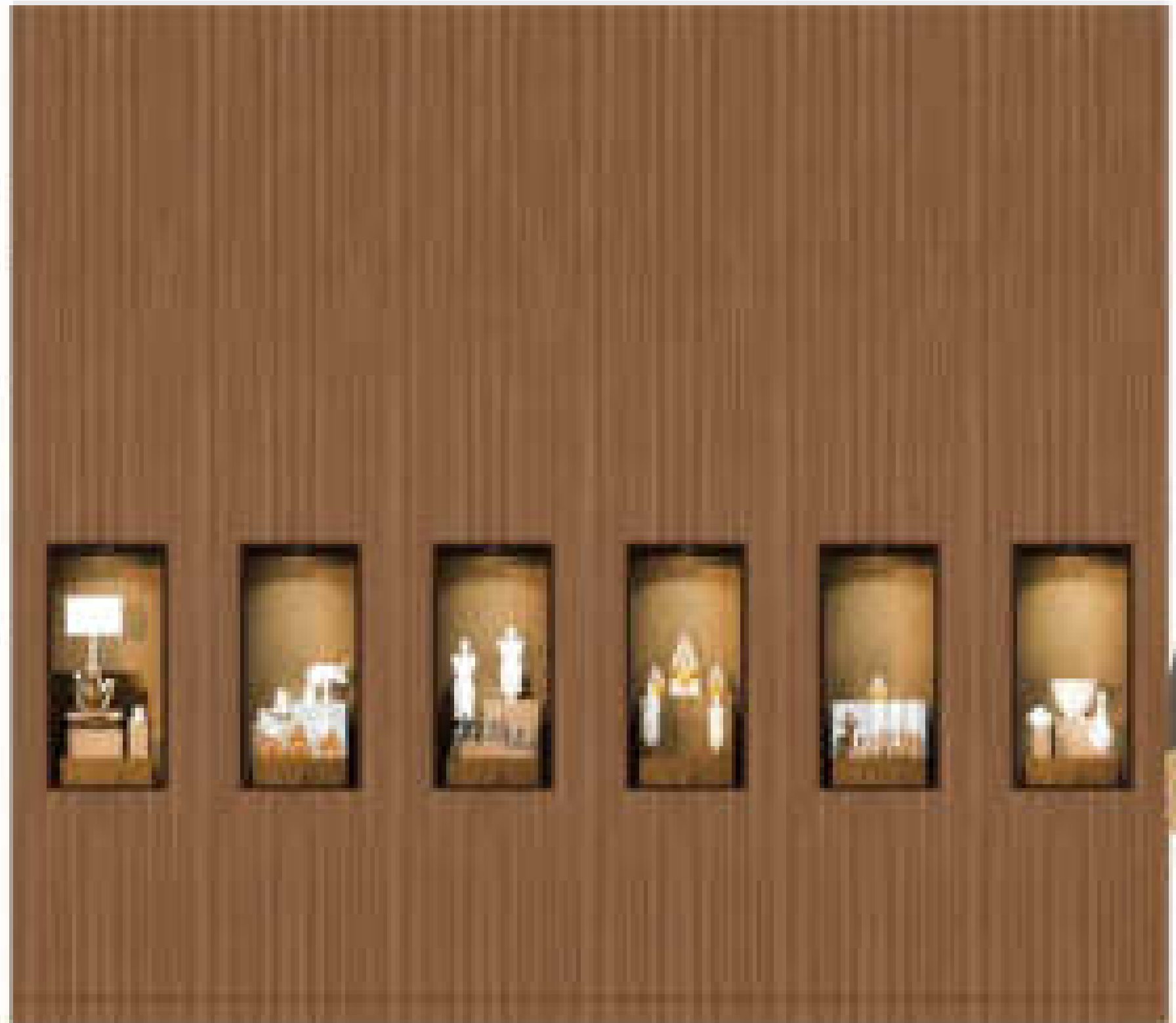


THIS ROOM IS PART OF THE DESIGN OF THREE HOUSE THAT HAVE OWNERS THE OVERALL STYLE IS MODERN STYLE USING WOOD, WHITE, THE BLACK COLOR OF THE VARIOUS FRAMES TO MAKE THE ROOM LOOK INTEREST





AS HOMEOWNERS ARE FOND OF COLLECTING ANTIQUE RELICS AND ITEMS THAT CANNOT BE EVALUATED THEREFORE ALLOWING THE DESIGNER TO THINK ABOUT THE LAYOUT OF VARIOUS ELEMENTS MATERIALS USE TO ATTRACT VISITORS AND ALSO HAVE DESIGNS.



NOBLE FAI-CHAI

CONSTRUCTION DRAWING

BANGKOK

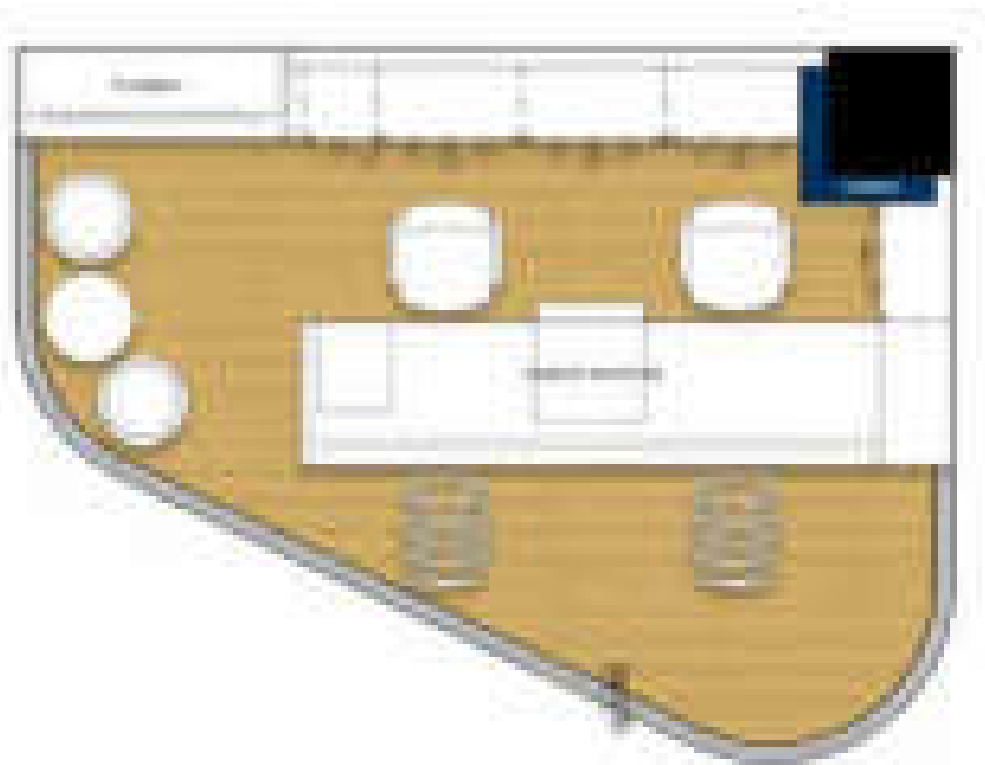




PERSPECTIVE LIVING ROOM UNIT22







FURNITURE LAY OUT PLAN
DIMENSION: 3000x2400x2400
(3x4x3M)



3D RENDERING PHOTOGRAPHY

SET FURNITURE LAY OUT PLAN TO BE SUITABLE FOR THE FUNCTION, AND ACCORDING TO THE REQUIREMENT OF CUSTOMERS. USE THE COLOR OF THE ORGANIZATION, MAKE THE BEST UTILITY.



POSTER GRAPHIC DESIGN



FURNITURE SELECTION

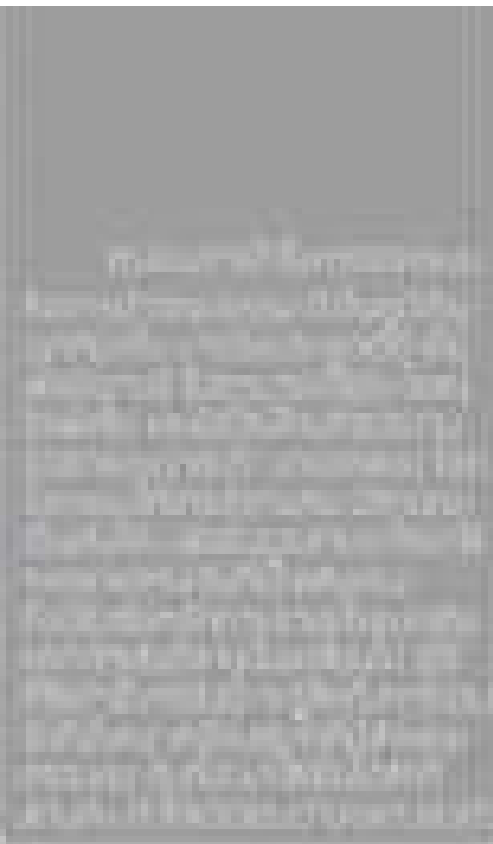
RE-ARRANGE THE SPACE FOR SITTING AND ADDING MORE STORAGE SPACE TO IMPROVE DILAPIDATED PARTS TO BE ABLE TO USE.

- RENOVATION of SO.M
 - STAFF'S SEATS
 - PLUG AREA
 - SMALL MEETING
- ADDITIONAL
 - STORAGE SHELF
 - RENTRY MAINTENANCE









F-01

SUM-KAI CHAIR

DESIGNED BY MARTIN HOON
TEKNIKARANGKAS LAMVECTY TECHNOLOGY
DI TAMAYUBUN, NITEROB, JI



IDEA SKETCH

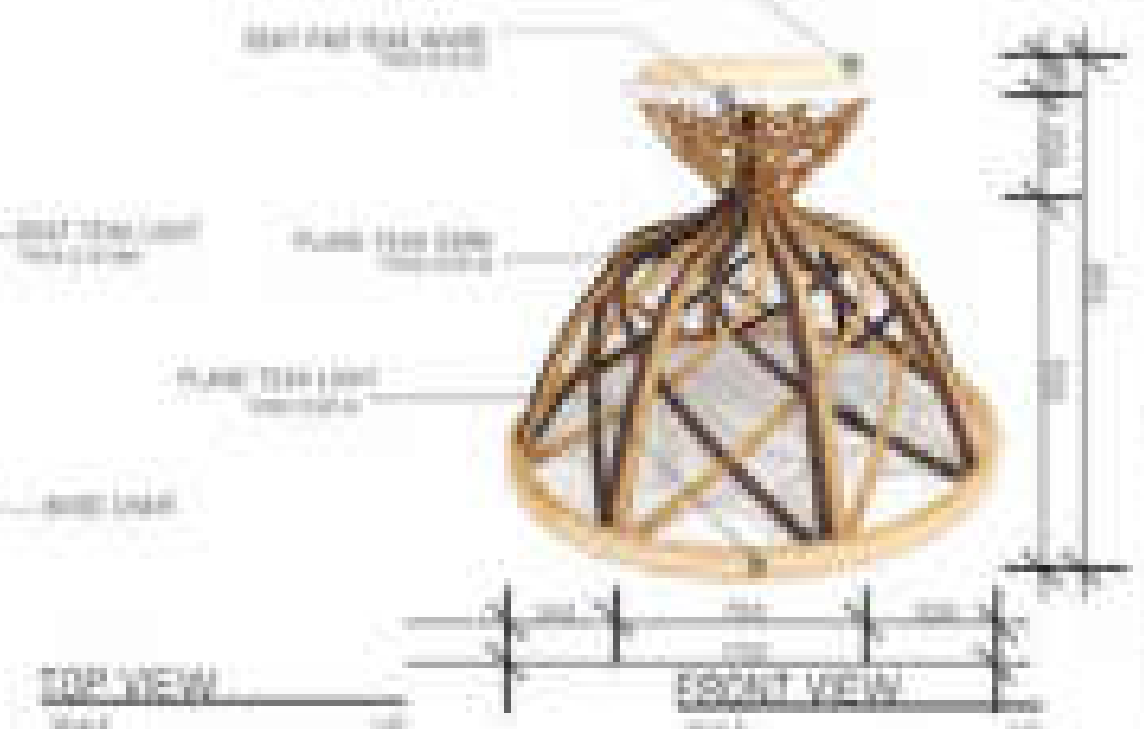


- Wood
- Fabric

SECTION



TOP VIEW

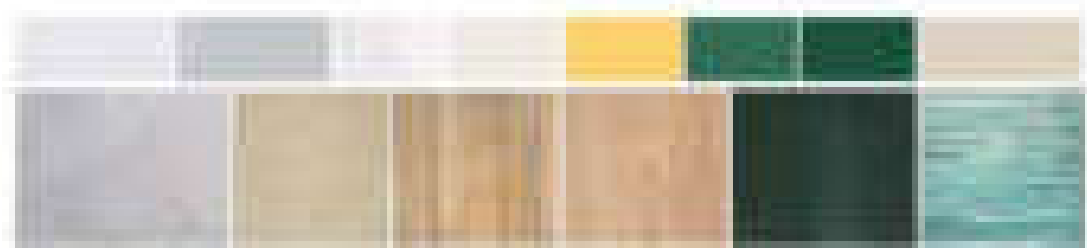


EXPLODED VIEW





FURNITURE LAY OUT PLAN



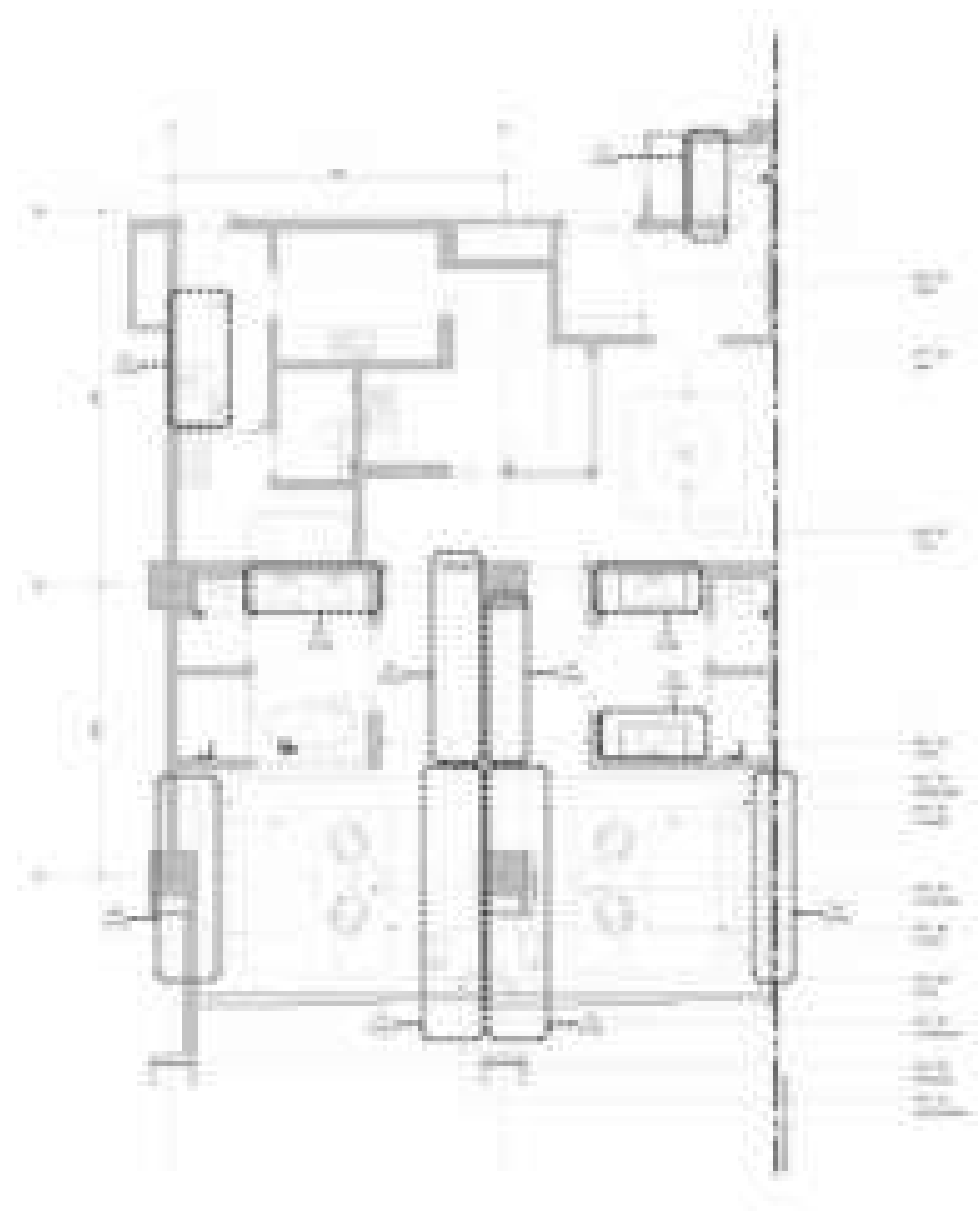


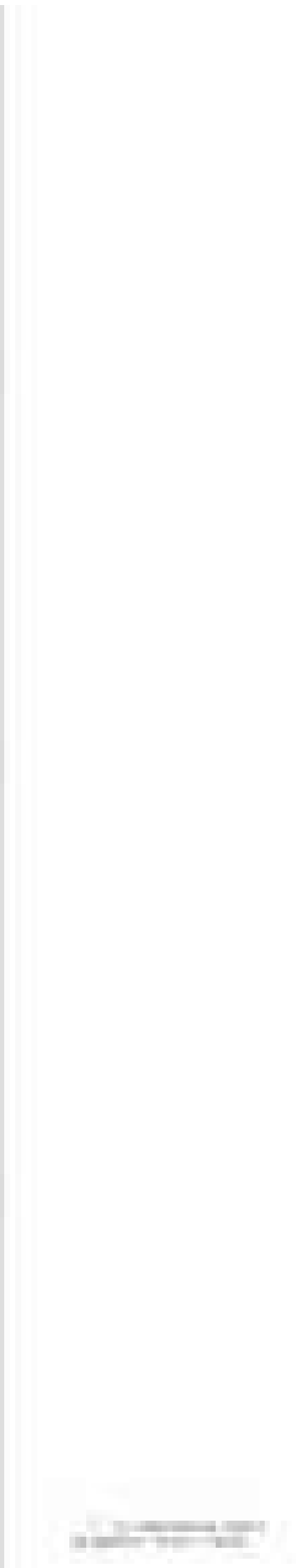
VEDARUN TRUNG VILLA 5 - CONCEPT DESIGN
RESIDENTIAL DEVELOPMENT | 2019
LOCATION | HANOI
SCOPE OF DESIGN | CONCEPT DESIGN

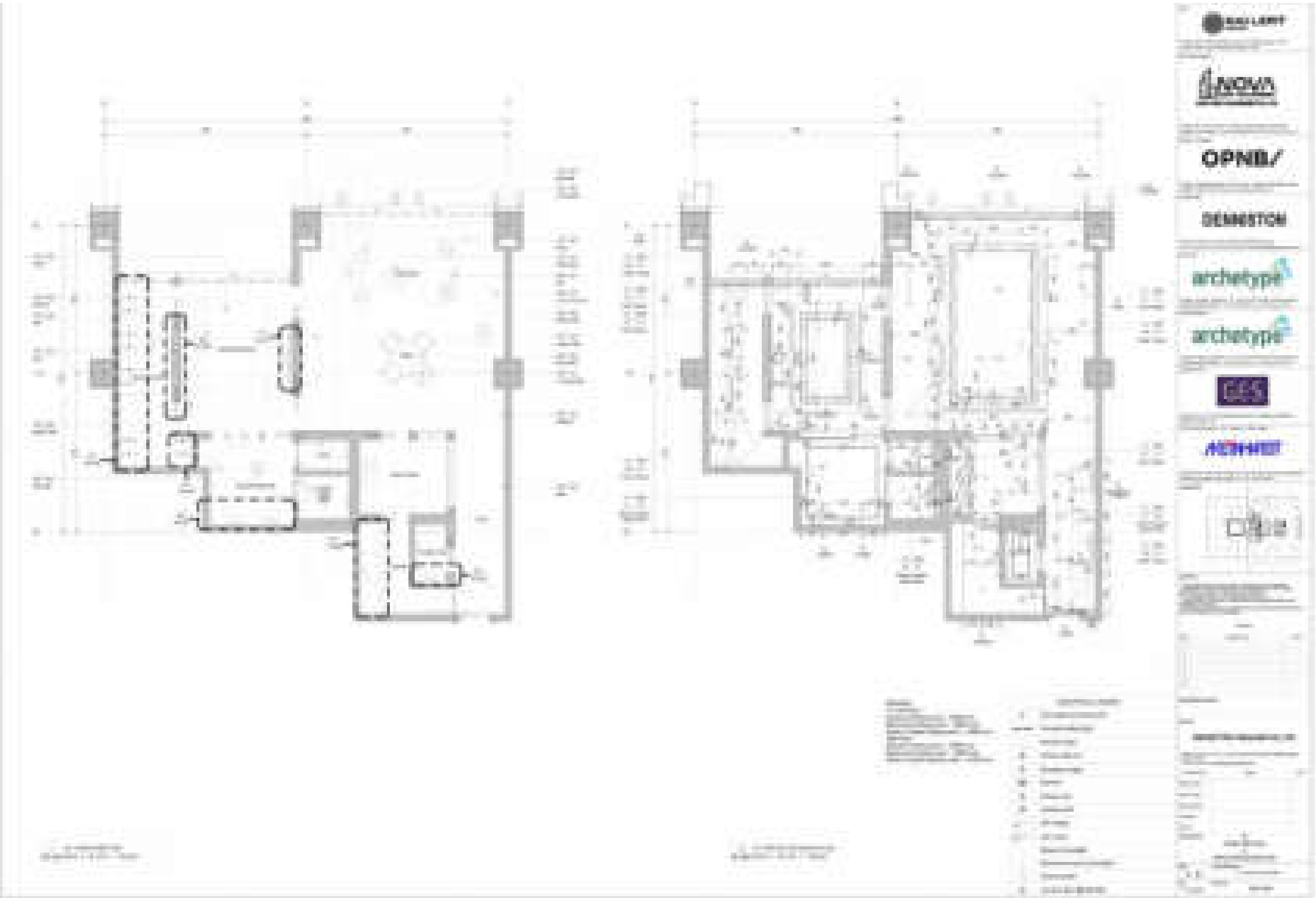


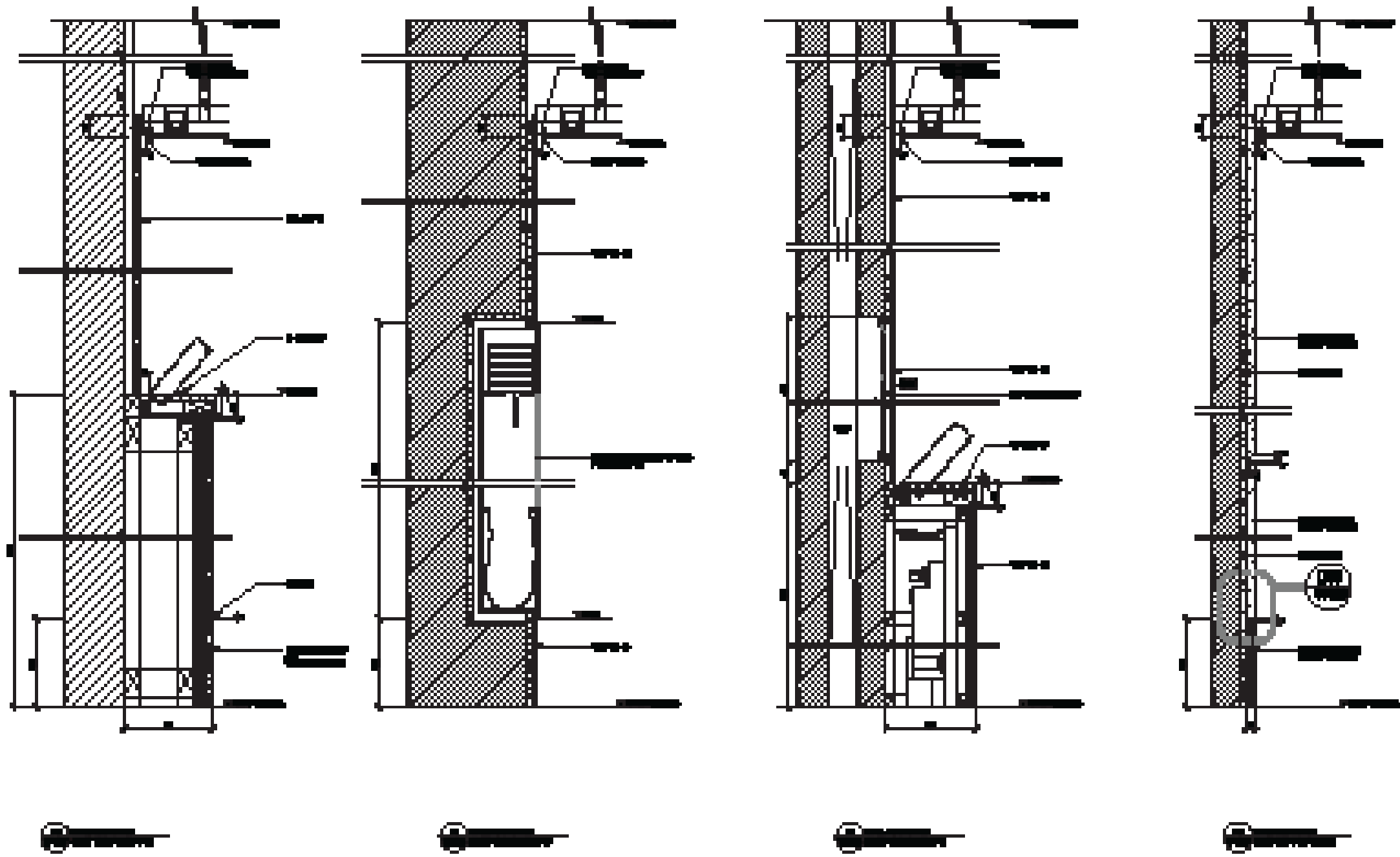


INTERIOR DRAWING DOCUMENTS









LANDMARK

MANUFACTURE

ARCHITECTURE

CONSTRUCTION

MECHANICAL

ELECTRICAL

PLUMBING

PAINTING

INTERIORS

LANDSCAPE

ENVIRONMENTAL

SAFETY

OPERATION

MAINTENANCE

REPAIR

RENOVATION

DEMOLITION

CONSTRUCTION

MANUFACTURE

ARCHITECTURE

CONSTRUCTION

MECHANICAL

ELECTRICAL

PLUMBING

PAINTING

INTERIORS

LANDSCAPE

ENVIRONMENTAL

SAFETY

OPERATION

MAINTENANCE

REPAIR

RENOVATION

DEMOLITION

THANK YOU :D