

# **PORTFOLIO**

## **LIGHTING DESIGNER**

*By : Thanapon Ditthanawat*

*Email : Thanapon.phithan7@gmail.com*

*Call : 092-217349*





## About Me

Name **Thanapon Ditthanawat [Phil]**  
26 years old

GRADUATED : 2014-2019 Faculty Of Architecture Rangsit University







INTERNSHIP : MIYAGAWAKOKI COMPANY[ JAPAN]

ACHIVMENT : NIPPON PAINT -(2016)

ARICO -(2015)

TAPADRAMA RANGSIT-(2018)

## Skills

- Dialux Evo 
- Autocad 
- Rhinoceros 3D 
- Sketchup 
- Photoshop 
- Power Point 

## Contract

- Email : [thanapon.phithan7@gmail.com](mailto:thanapon.phithan7@gmail.com)
- Call : 092-2173449

## Experience

Work Experience/Internship : 3 M. Lighting Design Office  
In Lightmoment Company Japan  
And Lighting Design Position  
Type Project : Residential Retail and other projects

Work Experience : 2019-2021 in Product Lighting Design Office  
In L&E : Lighting&Equipment  
And Lighting Design Position  
Type Project : Residential Retail and other projects

Work Experience : 3 M. Architecture Design Office  
In Vary Design  
And Junior Architect Position  
Type Project : Residential Retail and other projects

## Project

### LightingDesign and Lightign Product Project

CONTENT	PAGE
INSAF TOWER [Comercial]	1-4
S DIAMOND [Retail]	5-6
BMW [Showroom]	7-8
FREITAG STORE	9-10
Urban Pluse [Facade]	11-12
Josilins [Retail]	13-14

3dmodeler Design Project 15-18

Architectstudent Project 19-26

Transcrip 27



# INSAF TOWER

## RENOVATION

Architect : Array Architect and Interior Design

Year : 2021

Lighting Product : L&E Public Company Limited

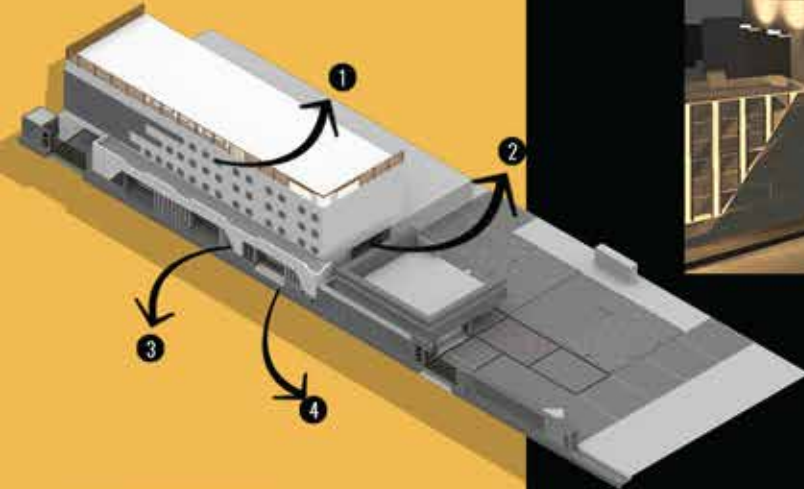
City : Bangkok

Country : Thailand

### Lighting Design Zone

#### Requirements

- 1 Facade
- 2 Drop Off
- 3 Super Market
- 4 Salon



### Existing

This Project will Renovation live in Sukhumvit 13.it place Residential business plan so i think have idea lighting design for humanity must Light-Life movement element away because it not to be lonely too

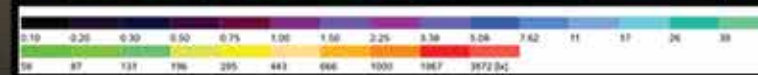
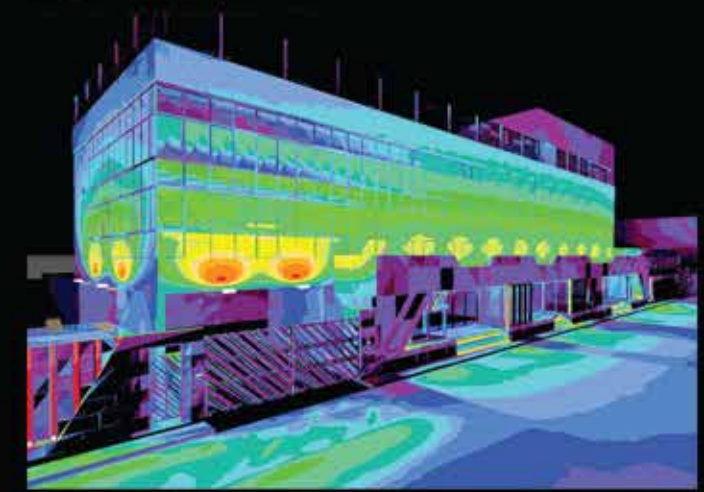
Each area is designed for different needs and applications.

### Conceptual Design

#### Facade

The facade effect is gradually darkened and faded to give the building interseting .

### 3D Rendering



#### Product

**FLOODLIGHT [WALL WAHSER]**  
3000 k Warmwhite  
40 W 65X120 Degree Polarized10



**FLOODLIGHT [WALL WAHSER]**  
3000 k Warmwhite  
40 W 65X120 Degree Polarized10





Drop Off



Directlight will come up with Linear Light make it fit with the interior design.



ON PROCESS



Installation



A CEILING SECTION SCALE 1:5

Product

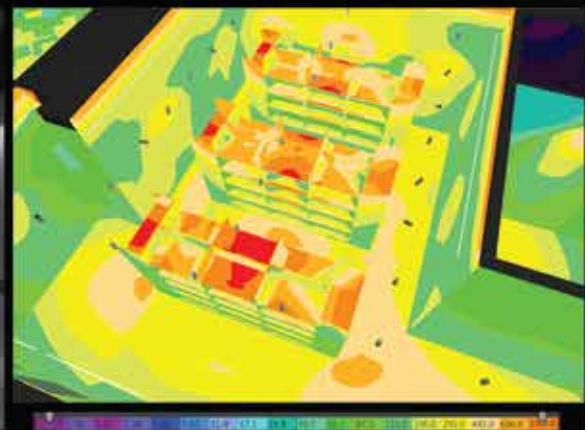
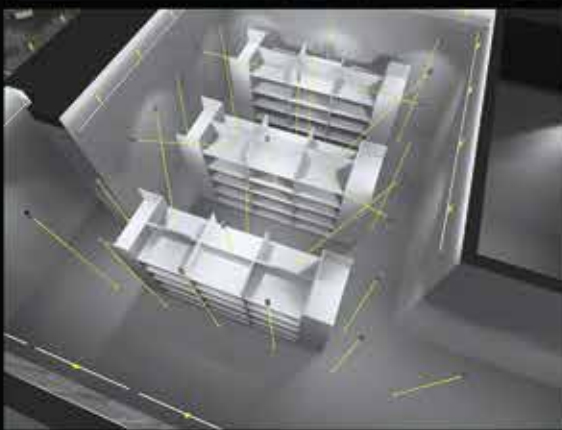
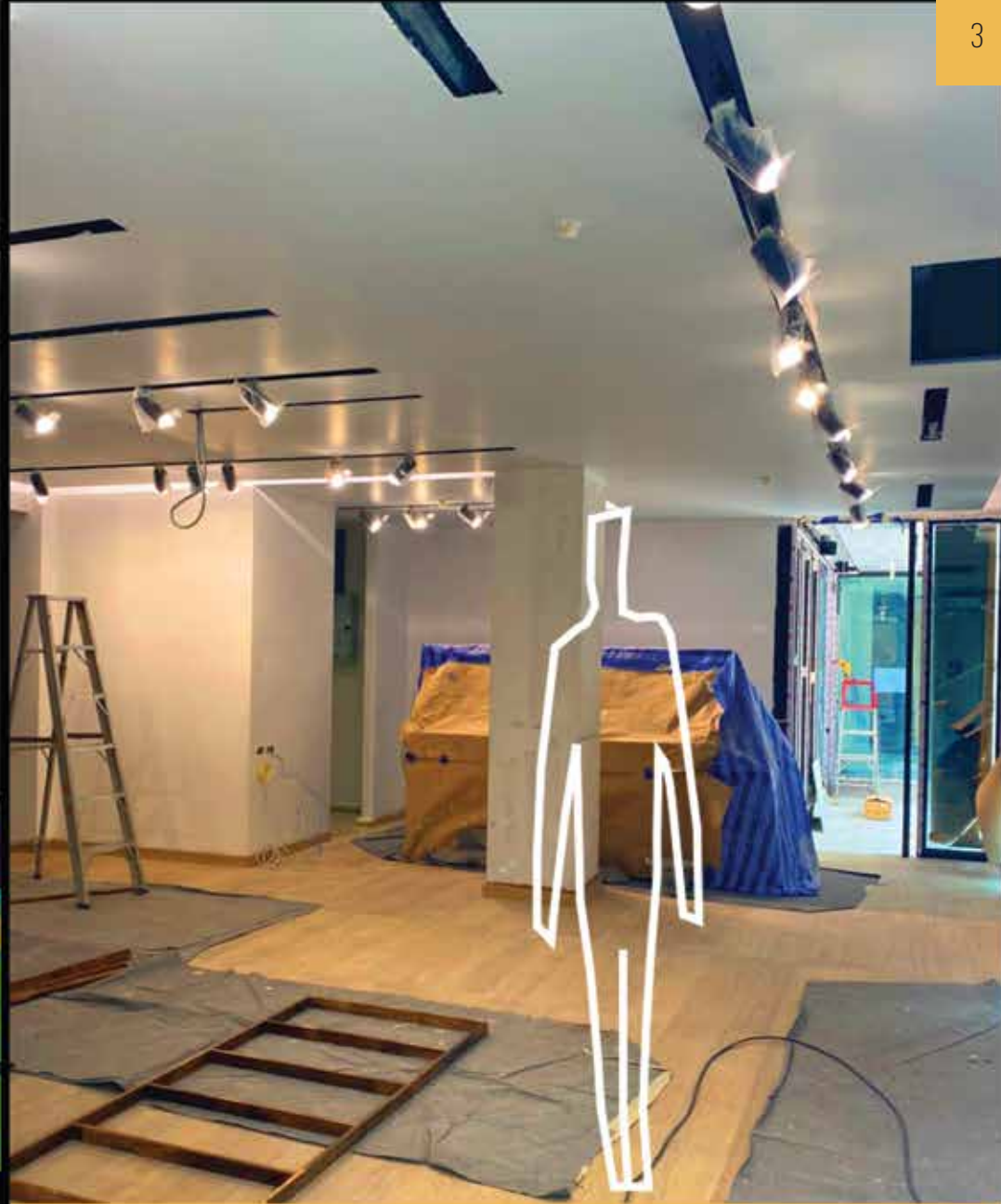
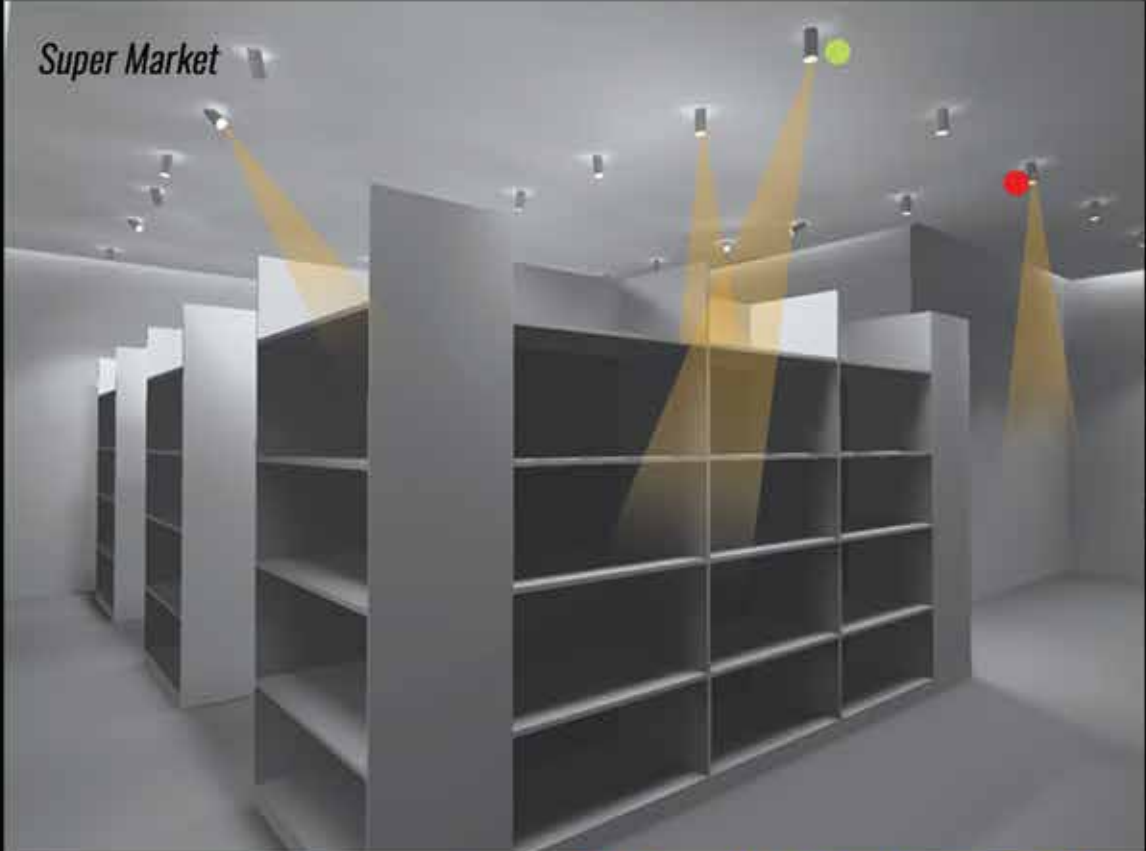


ALUMINIUM PROFILE [GENERAL LIGHTING]

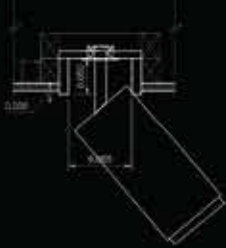


LINEAR LIGHT 3000 k Warmwhite 2X12W 110 Degree

# Super Market



## Installation



## Product



- Tracklight [General light] 4000 k Coolwhite 20W 40 Degree
- Tracklight [Accent light] 4000 k Coolwhite 20W 24 Degree

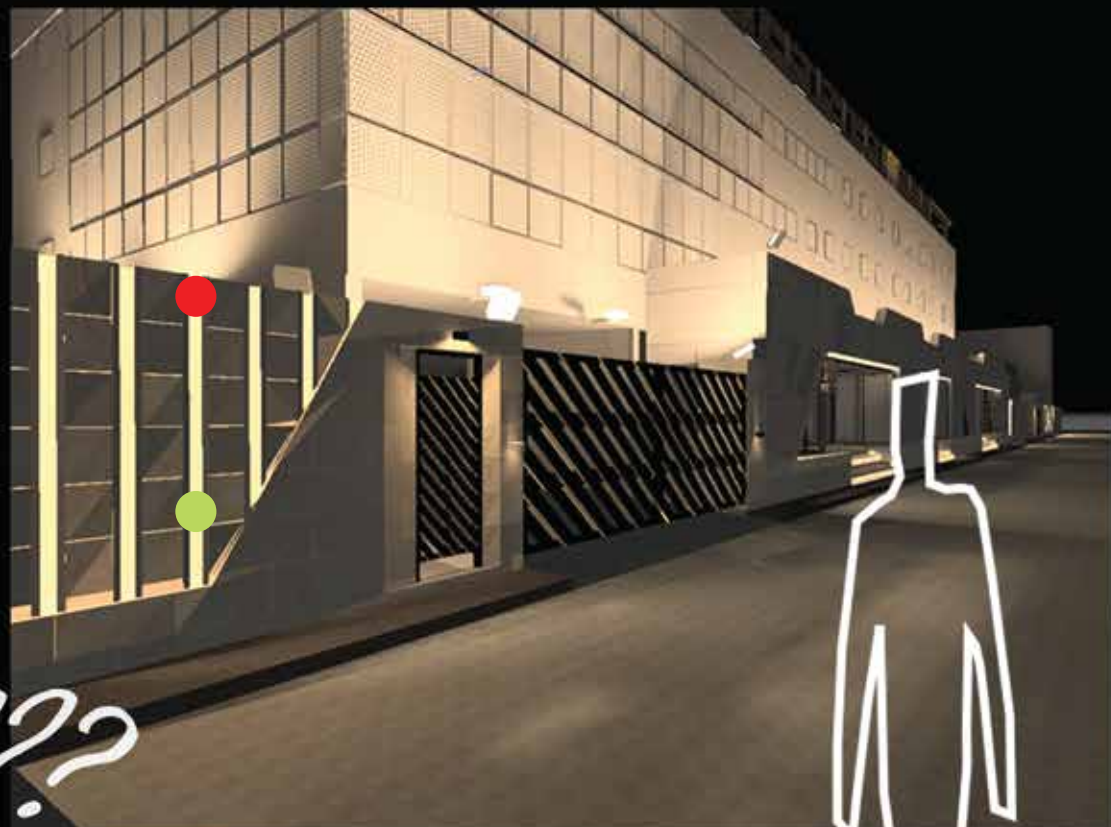
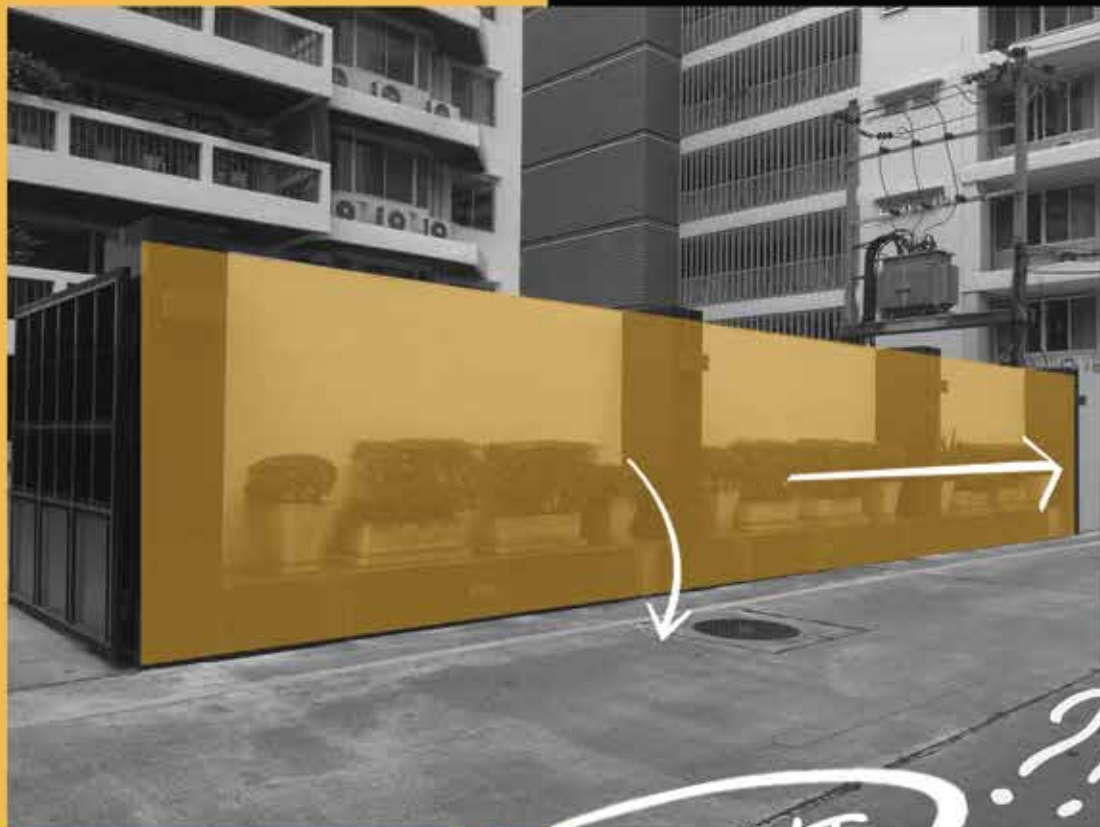
We will use tracklight. We have two corners, 40 angles to illuminate the floor, 24 to highlight objects.



# WALK WAY



Side lighting of the project in the hallway is important.  
We choose to design the light to match the pattern of the fence project.



# WALL LIGHT

### Product



● LINEAR LIGHT [IP65]  
3000 k Warmwhite  
12W 110 Degree



● ALUMINIUM PROFILE  
[AMBIENT LIGHT]

# S DIAMOND

Interior Design : Design Motif

Year : 2021

Lighting Product : L&E Public Company Limited

City : Bangkok

Country : Thailand

Rendering Concept



## Requirement

SALE AREA 5 BACK OF HOUSE

1 ENTRANCE/FRONT

2 CIRCULATION

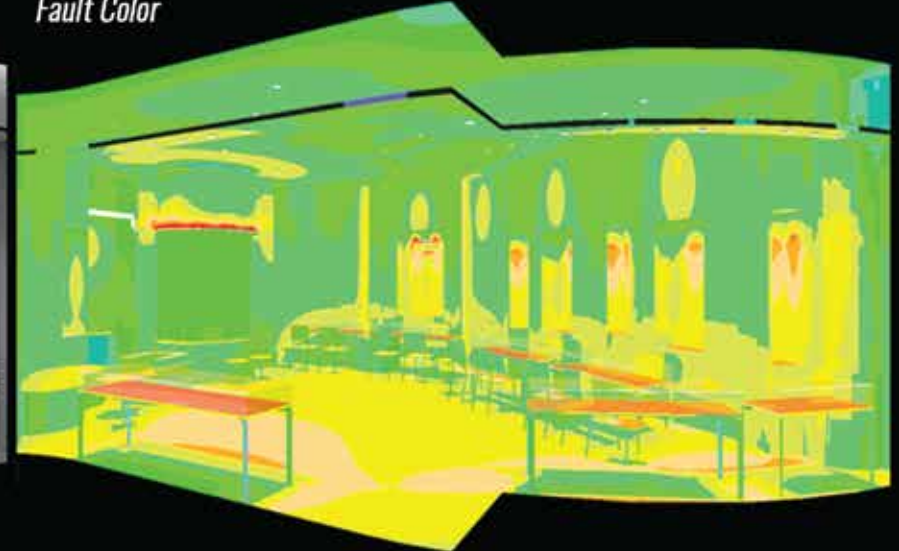
3 SALES

4 Public ZONE

Lightign Simulation



Fault Color



## Zoning





**INSTALLATION METHOD**



**Product**



● **ACCENT LIGHT(จุดสนใจ)**  
 Recessed Downlight  
 6500 K DAYLIGHT  
 14W 24D



● **ACCENT LIGHT(การส่อง)**  
 Recessed Downlight  
 6500 K DAYLIGHT  
 20W 24D



● **GENERAL LIGHT(จุดรวม)**  
 STRIP LIGHT  
 6500 K DAYLIGHT  
 20W 110D



● **AMBIENT LIGHT(BULKHEAD)**  
 STRIP LIGHT  
 6500 K DAYLIGHT  
 14W 110D



● **ACCENT LIGHT(SHOW CASE)**  
 Recessed Downlight  
 6500 K DAYLIGHT  
 13W 24D



● **(GENERAL LIGHT)**  
 DOWNLIGHT  
 6500 K DAYLIGHT  
 6 W MR 16 36D





# BMW LAKSI DONMUANG

Architect : Array Architect and Interior Design  
Year : 2020  
Lighting Product : L&E Public Company Limited  
City : Bangkok  
Country : Thailand

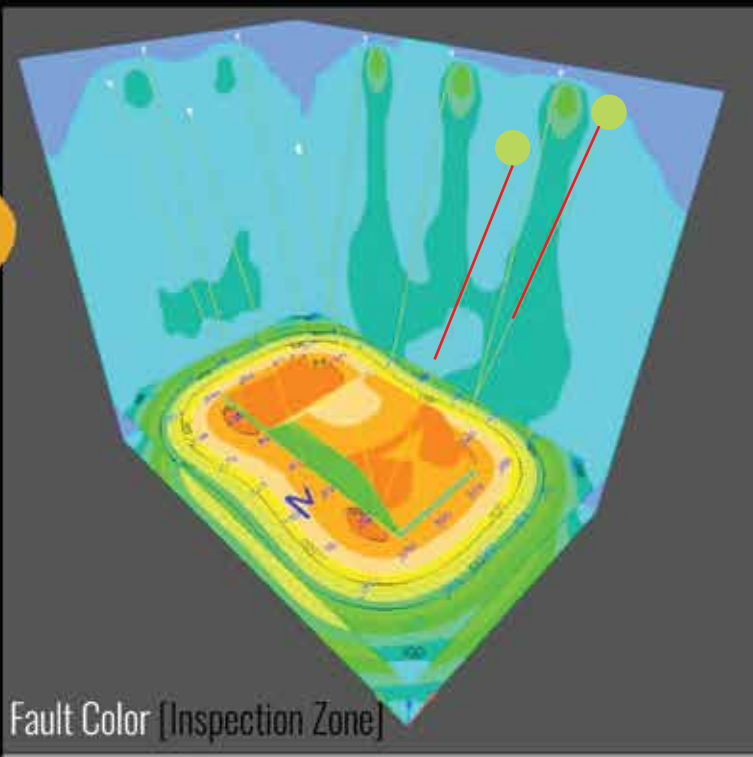


Perspective1 [Service Car]

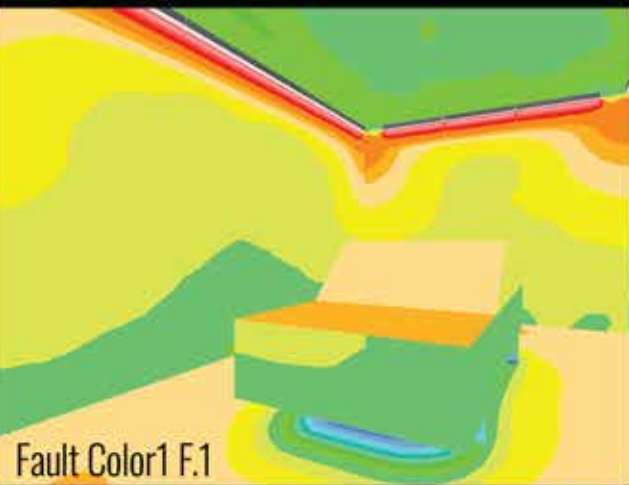
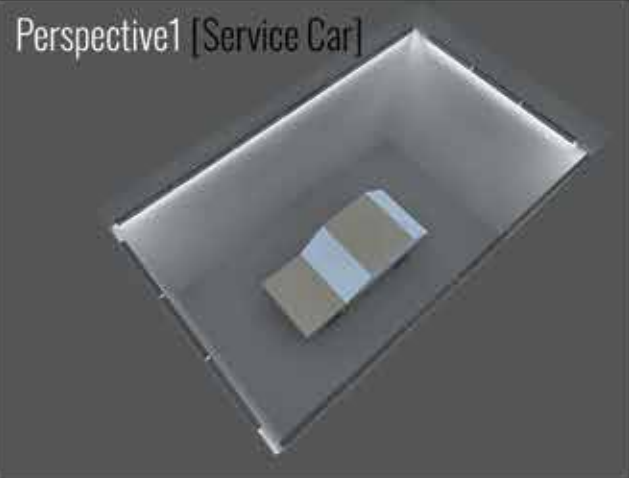
"Bmw at Donmuang The lighting of the vehicle maintenance area must be bright enough for use at 1000 lux. Not only that, we have also added a light to the vehicle inspection area using a type of Tracklight"

EXISTING

HANGING WIRE WAY



Fault Color [Inspection Zone]



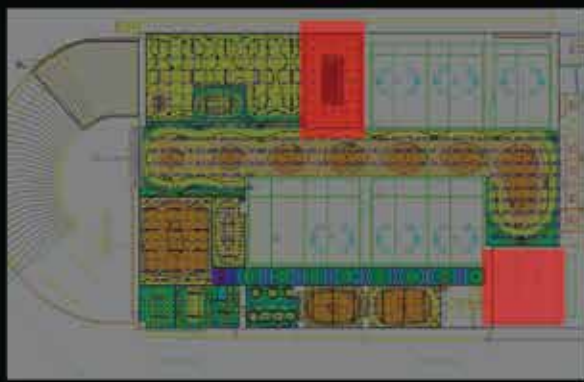
Fault Color1 F.1



Light to Service



Plan



- Maintenance Zone
- Inspection Zone

Product



- [Maintenance Zone]
- GENERAL LIGHT
- LED-BATTEN
- T8-110D-2X30W-6500K



- [Inspection Zone]
- ACCENT LIGHT
- LED-TRACKLIGHT
- 36D-23W-5000K



# FREITAG STORE

Architecture : Supermachine Studio

Year : 2021

Lighting Product : L&E Public Company Limited

City : Silom 8, Bangkok

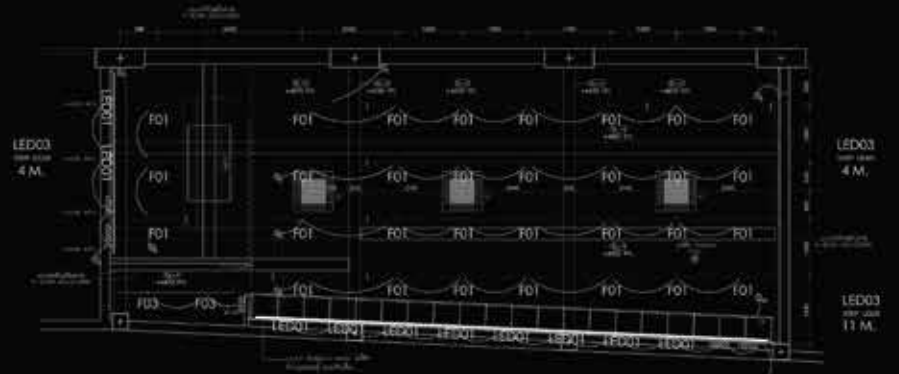
Country : Thailand



*" LIGHTIGN FOR NEXT LEVEL "post-industrial warehouse style  
by Super Machine studio*



F01 L&L LED T8 2X14W 4000K COOL WHITE  
 F02 L&L LED T8 9W 4000K COOL WHITE  
 F03 L&L LED T8 14W 4000K COOL WHITE  
 LED01 LUMAX LED STRIP 12/11 14W 4000K COOL WHITE  
 LED02 LUMAX LED STRIP 12/11 7W 4000K COOL WHITE  
 LED03 L&L LED T8 12W 4000K COOL WHITE  
**LIGHTING PLAN F.1**  
 SCALE 1:50

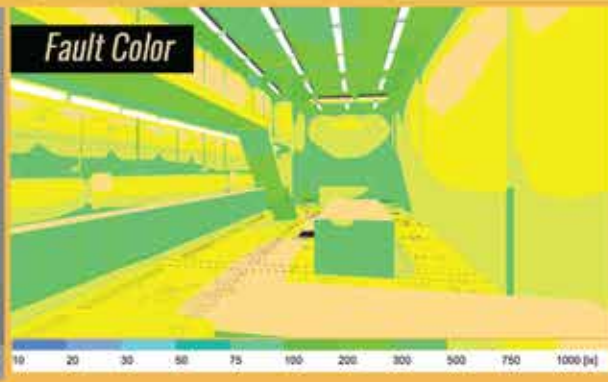


F01 L&L LED T8 2X14W 4000K COOL WHITE  
 F02 L&L LED T8 9W 4000K COOL WHITE  
 F03 L&L LED T8 14W 4000K COOL WHITE  
 LED01 LUMAX LED STRIP 12/11 14W 4000K COOL WHITE  
 LED02 LUMAX LED STRIP 12/11 7W 4000K COOL WHITE  
 LED03 L&L LED T8 12W 4000K COOL WHITE  
**LIGHTING PLAN F.2**  
 SCALE 1:50

Rendering



Fault Color



Product



**[GENERAL LIGHT]**  
 LED BATTEN  
 4000K COOLWHITE  
 2X14W T8 110D



**[GENERAL LIGHT]**  
 LED BATTEN  
 4000K COOLWHITE  
 9W T8 110D



**[ACCENT LIGHT]**  
 LED LINEAR  
 4000K COOLWHITE  
 14W T5 110D



**[AMBIENT LIGHT]**  
 STRIP LIGHT  
 4000K COOLWHITE  
 12W 110D



## URBLE PLUSE



Lighting Deisgn : L&E Plublic Company Limited  
Year : 2021  
Lighting Product : L&E Plublic Company Limited  
City : Bangkok  
Country : Thailand

*" This Project will EXPLANTION live in Sukhumvit 4.it place is Apartment it issue because at night Rather Context Is The Dark so i have idea design Verticle and Horizontal at Building is Hight and long for appoth so people remember it is ICONIC in context "*

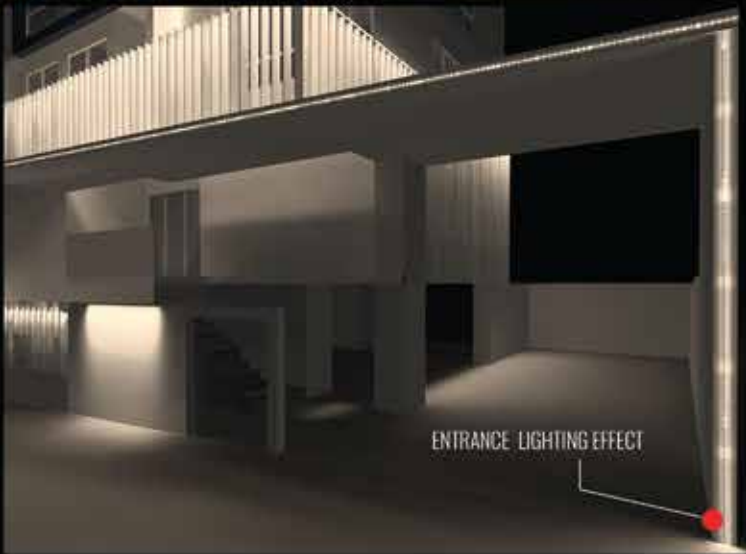
# CONCEPT



# ELEVATION



# EXISTING



# INSTALLATION METHOD



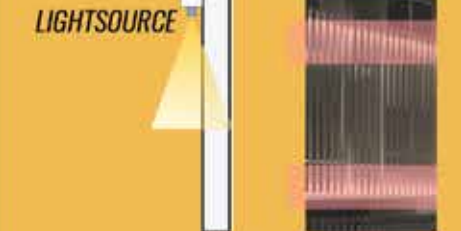
PLAN RECESSED



PLAN LIGHTSOURCE



# SECTION



# PRODUCT



LED-STRIP WARMWHITE 12W



LED-LINEAR LIGHT WARMWHITE 60W 90DEGREE.



LED-TUBE WARMWHITE 6 W 110 DEGREE



LED-STRIP WARMWHITE 12W



# JOSILINS

Lighting Design : L&E Public Company Limited

Year : 2021

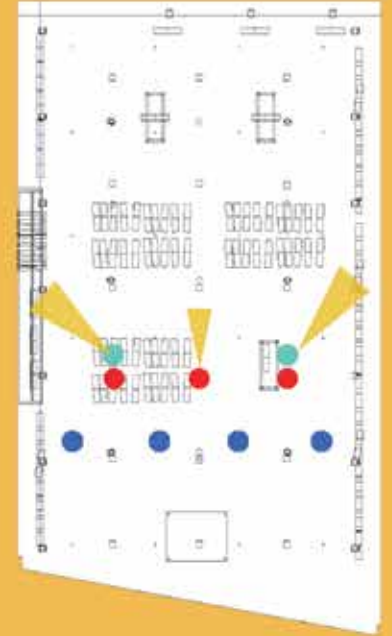
Lighting Product : L&E Public Company Limited

City : Bangkok

Country : Thailand



*" This Project will EXPLANATION live in Sukhumvit 4.it place is Apartment it issue because at night Rather Context Is The Dark so i have idea design Verticle and Horizontal at Building is Hight and long for appoth so people remember it is ICONIC in context "*



Product



- [ACCENT LIGHT]  
TRACK LIGHT  
6500 K DAYLIGHT  
7 W PAR 16 360



- [ACCENT&GENERAL LIGHT]  
TRACK LIGHT  
6500 K DAYLIGHT  
28 W HI-PAR 400

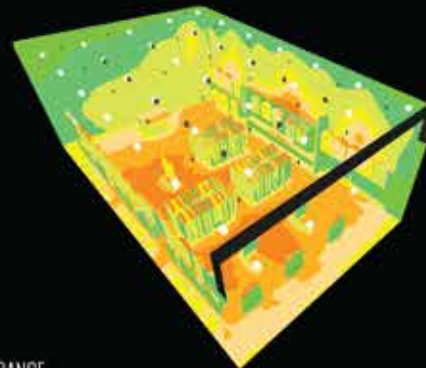
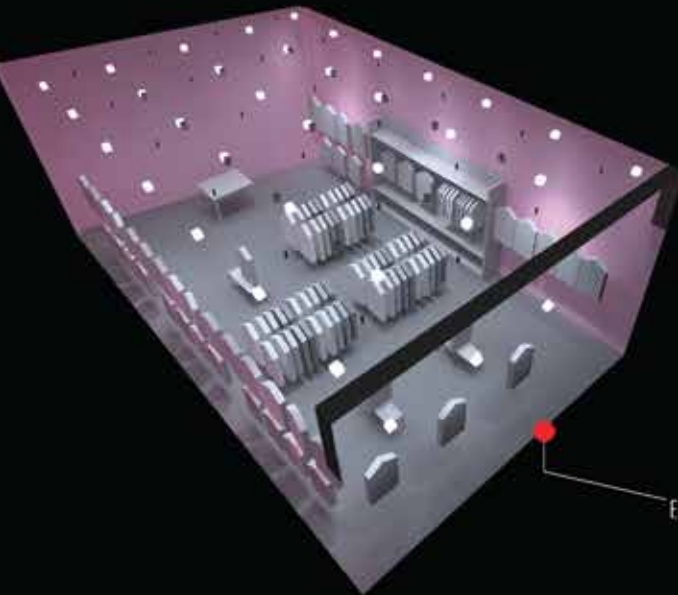
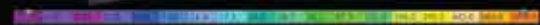
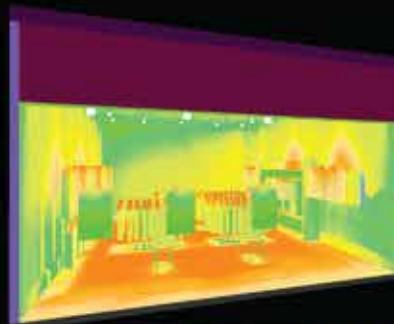


- [GENERAL LIGHT]  
DOWNLIGHT  
6500 K DAYLIGHT  
6 W MR 16 360

Rendering



Fault Color



ENTRANCE



# VARY DESIGN *[project in China]*

PROJECT : Modernresidential

Software : Rhino 6 +Lumion



# VARY DESIGN [project in China]

PROJECT : ROOF Pavillion Site2

Software : Rhino 6

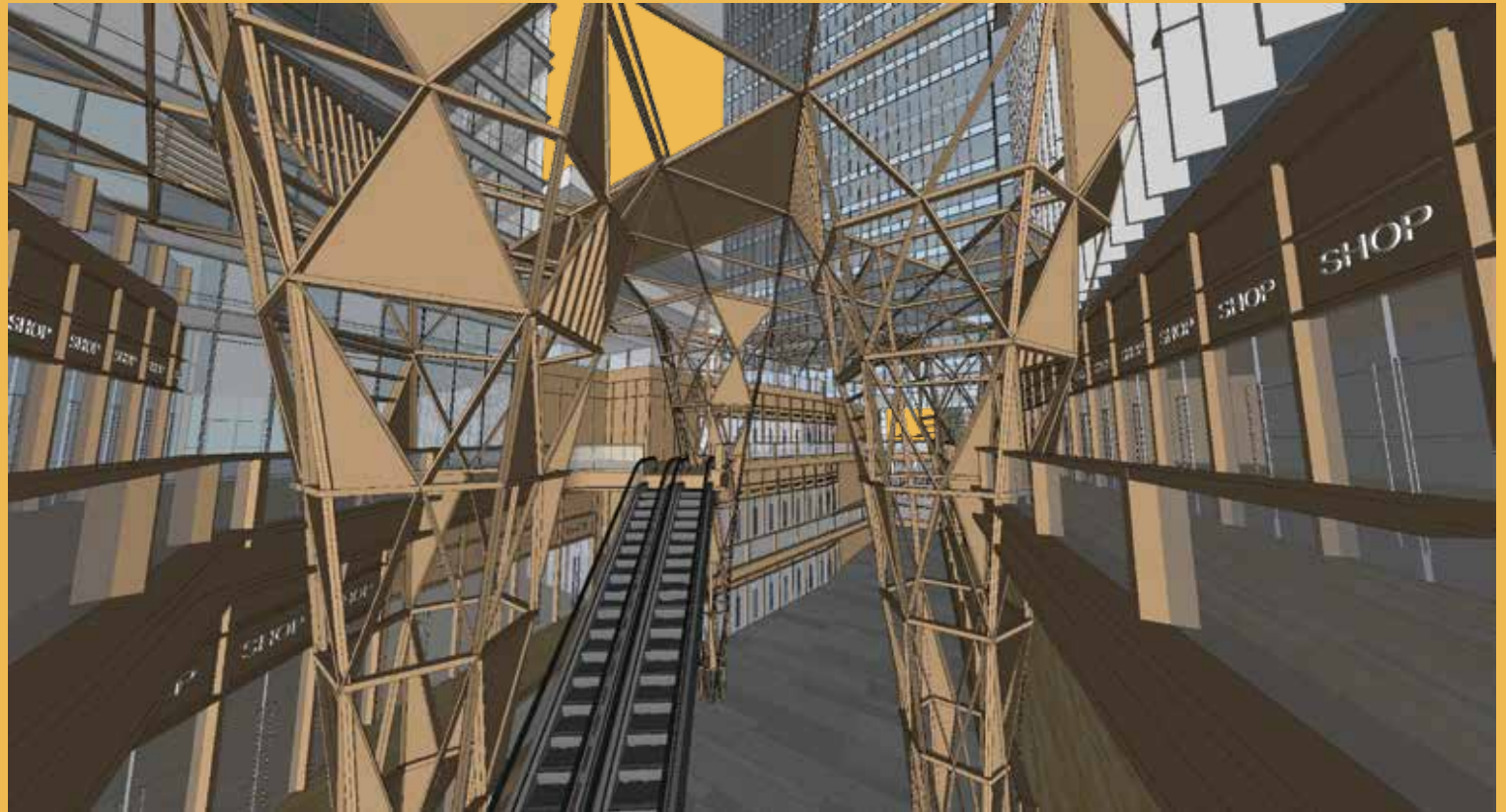
modu



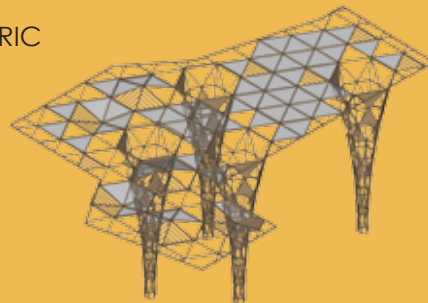
modular



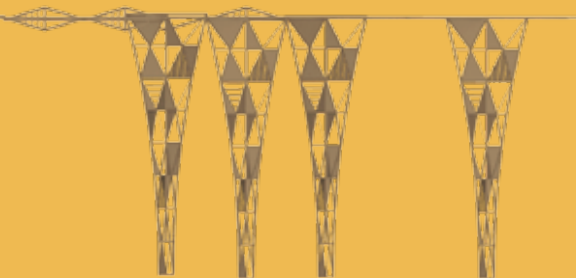
colume



ISOMETRIC



ELAVATION





---

# My Experience

PROJECT : GYM

Software : Rhino 6 + Lumion

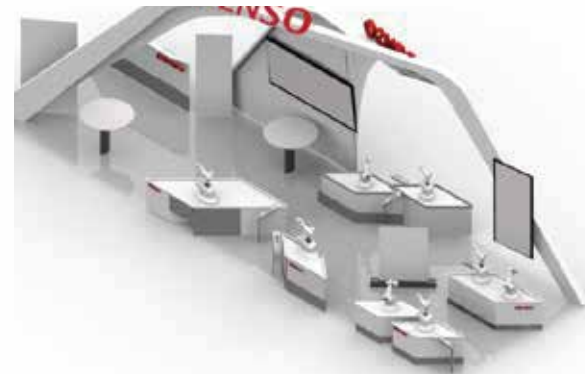


---

# My Experience

PROJECT : DENSO BOOTH

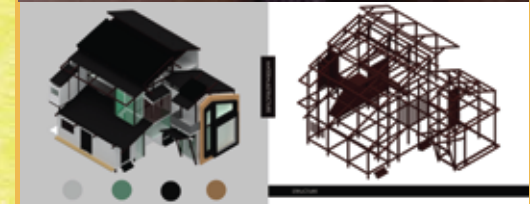
Software : Rhino 6





# INTERNSHIP

PROJECT : MIYAGAWA KOKI [JAPAN]



**HOUSE OF JAPAN** Study the structure of prefabricated houses that are popular in Japan. This house is inspired by the Japanese way of life. Combined with the design principles of a tropical house

# INTERNSHIP

PROJECT : MIYAGAWA KOKI[JAPAN]





# YEAR 1

PROJECT : BACK TO BASIC 4+1



**BACK TO BASIC** Study vernacular architecture Together with seniors year 4 To develop teamwork Learn about the material usage, lifestyle of the people who live here. Use its unique style to design buildings This building was renovated. In order to respond to users in the cold area

# YEAR 2

PROJECT : THEAM HOTEL[SPECTRE]



**SPECTRE** *What will happen in the future if the resort that we are familiar with is not the same as the resort that we currently meet? This place will bring you a new experience. Both the matter of use Activities occurring within the project*





# YEAR 3

PROJECT : HIGHRISE BUILDING [DESIGN]

## AREA24

### Ethereal the Project

This project for disaster that happens in the future. When the Earth's loss energy source and water. We see disaster is benefit such as water from flood, tornado, and rain. Energy from sun, cold, and wind. It like energy station and refuge when the residence, port need. In the building have farm, commercial, and residential. It's a city. Call it "Area24".

**DADY DIM**  
DIREKTOR REALEY  
Pusat Rancang Bangun  
Rasional, Dimensi 3D/2D

**DADY DIM**  
DIREKTOR REALEY  
Pusat Rancang Bangun  
Rasional, Dimensi 3D/2D

Flood Cold Rainy Sunny Sandstorm Normal

When the rain comes, facade will change for...  
When the sun comes, facade will change for...  
To protect farm or...  
In the night, facade will close up for...

## DETAIL

## DESIGN FOR

SUNNY  
RAIN  
COLD  
FLOOD  
SAND STORM

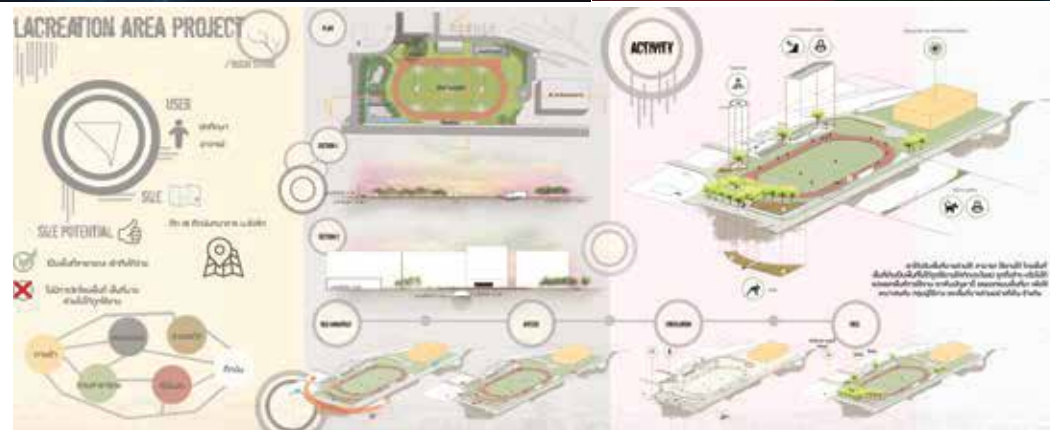
NORMAL

# YEAR 3

PROJECT : LAND SCAPE



**LAND SCAPE** Project to improve the park area of Rangsit University Modifying the area around the ball field from the original. The area that is not being used Or make it work as it should Which we changed the area into a more recreational area with activities Where to read books, play yoga, skateboarding area





# YEAR 3

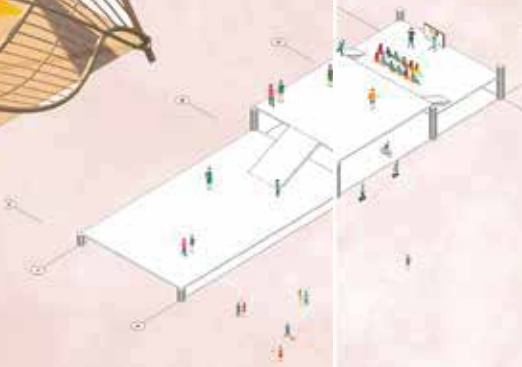
PROJECT : BAMBOO STRUCTURE

## TENSILE :

wanna the modern form and alternative innovation to comaind 2 things between old structure and new structure



## FUNCTION :



## BAMBOO :

The basic cultural structure can twist and make free from building.it makes the building never die

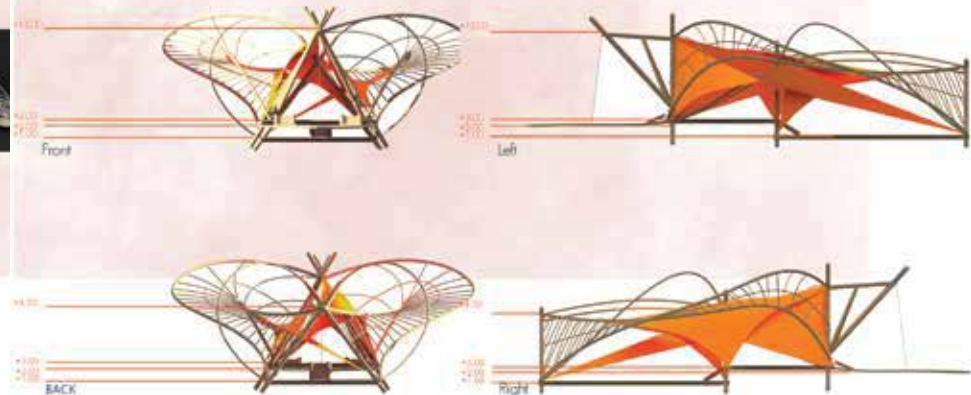


## DETAIL STRUCTURE



## Conceptual Design :

To celebrate 30th faculty of Architecture , Rangsit University. they want architecture set up on the well front their building We see the main access is low quality with the well.I think it's better if it use high quality.They are add activities such as well classroom , Restroom , pratice cheerleader and drums. Together with others student to use there.



# YEAR 5

PROJECT : THESIS

The history of the Orlando Tower 3 that it was to be the first life as a coal-fired power plants. In 1955-1998 served electricity to cities and towns Johannesburg Soweto in 1998, the plant has been shut down. Because coal is not worth the distance to Second life 2000-2014, the factory has been dropped. By Google to use any of the buildings or on the plant remains, whether the cooling tower space water power station Third life 2015 - 2019, this place became a bill board painting show, the city had been a center for sports and entertainment center, X-Treme's bungee Club.

It appears that everything in this area. Has been used for a new job. The factory was destroyed in 2014, but has not been used well, nothing. And it has a negative effect on the system and streams of Soweto is the problem of waste water. And the lack of water until the problem is very real impact comes from factories all over South Africa at that time. People need water bucket or container to put enough water to stand in line. In order to receive water from the water tank to be this way, or who have enough personnel, vessels will be brought back to it. And this is something that will bring to life the 4th of this place.

This area will become a park. The healing properties of water. And a host of activities to keep people in the area that use water during the water. Or does not use it as a place to drink beer, uh, umgombothi local beer. The traditionally friendly relations bonding The people of South africa. In addition, people can use it to bring water to the space available

