

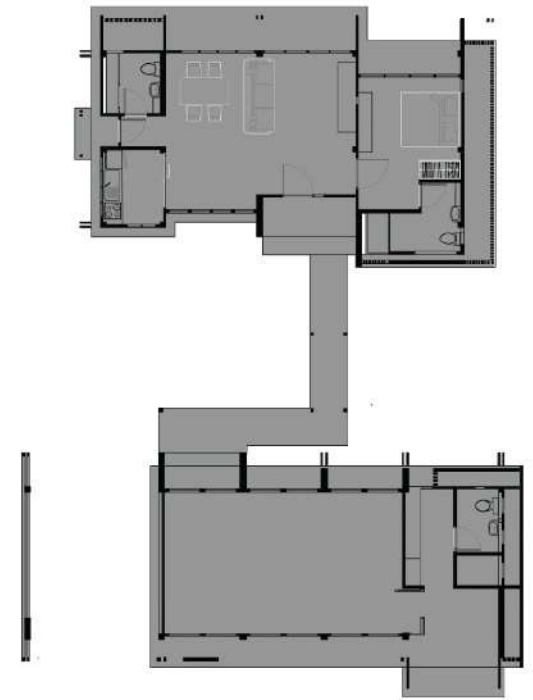
# PORTFOLIO

ARCHITECTUTERE

PUNCHOK PUANGKHAM

# SMALL HOUSE

PLAN



ELEVATION



## CONCEPT

small house design project Users are used as yoga coaches. Need a house to live small and can be used to teach yoga. which is clearly separated between the residential house and the yoga studio with interconnection need space exposed to the outside That is natural and peaceful, the house is designed to blend in with the context. to be one and the same between the user's home and yoga activities





**BJARKE INGELS**  
BIG | BJARKE INGEL GROUP

PLAYFULL · RESPONSIBILITY  
Eccentric · Sustainability  
Urban · Architecture

**YES IS MORE**

### GREEN HOUSE LTN

**CONCEPT**  
A modern building that integrates nature and technology, creating a sustainable and healthy environment for its users.

**USER**  
Private and Public users.

**FUNCTION**  
Office, Retail, Public space, etc.

**SITE**  
Urban location with green spaces.

**PRIVATE** 40%  
**PUBLIC** 60%

### MASS DEVELOP

**DIAGRAM DEVELOP**

Solarcell Roof garden  
Roof garden  
Hydroponic room  
Cafe  
Lobby  
Rooftop terrace  
Rooftop garden  
Rooftop terrace  
Rooftop garden

**ELEVATION I**  
**ELEVATION II**

**PLAN FLOOR II**  
**PLAN FLOOR II**  
**PLAN FLOOR II**  
**PLAN FLOOR II**

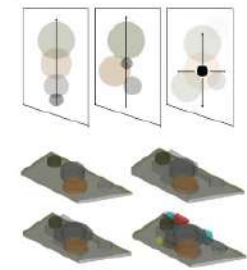
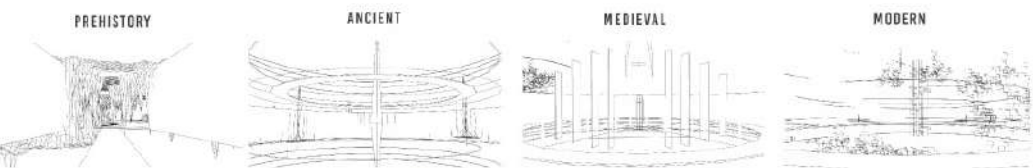
**SECTION I**  
**SECTION II**



GREEN LIFE TECHNOLOGY

# CIVILIZATION E - SPORT CENTER

DEVELOP DESIGN FORM CIVILIZATION GAME



LAYOUT

## PLAN



LABEL 0

ENTRANCE  
CARPARK



LABEL 1

1. ENTRANCE  
2. LOBBY  
3. HALL  
4. FOOD  
5. GAMING SHOP  
6. STAFF  
7. OFFICE



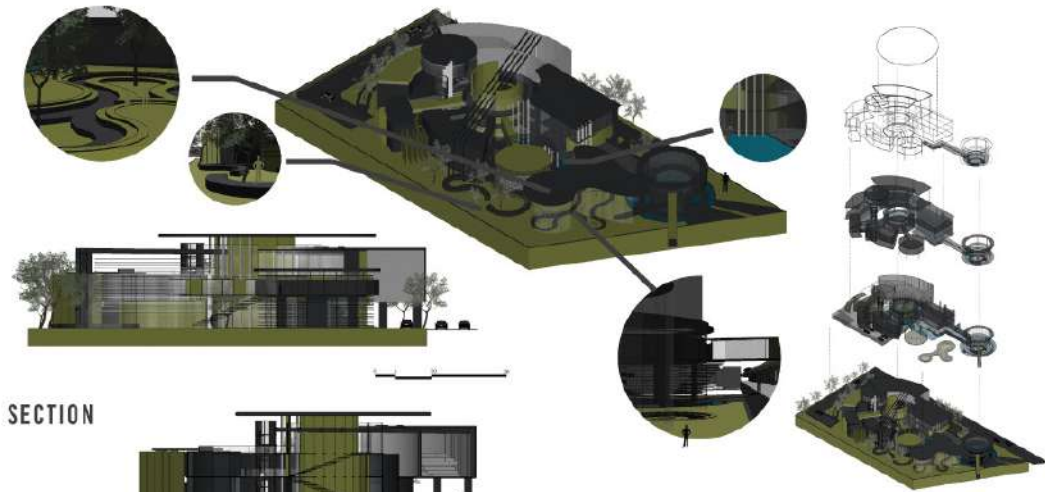
LABEL 2

8. STAIRCASE  
9. COMPUTER LAB  
10. LIBRARY  
11. GYMNASIUM  
12. GYMNASIUM  
13. GYMNASIUM

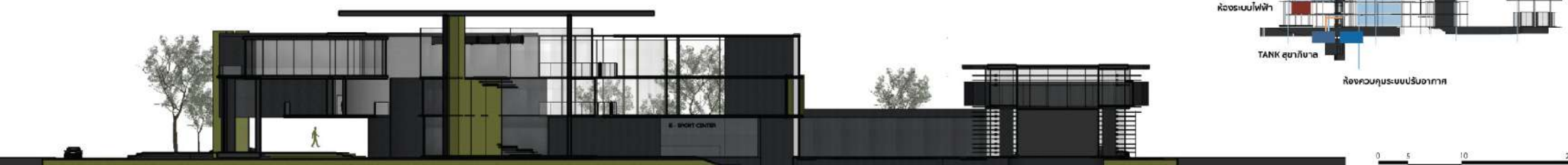
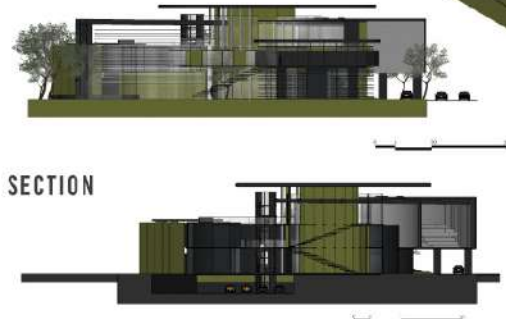


LABEL 3

14. TERRACE  
15. HALL  
16. E-SPORT COMPETITION  
17. GYMNASIUM



## SECTION



# X CAFE

A coffee shop located in the hillside context, and designed to fit the context. It has a wide opening to allow internal and external welding, to be part of the external context. The interior of the shop is designed to have dark and dark tones. Gives you the feeling of being in the valley, using natural stone materials to create a better atmosphere for using the coffee shop area.



Material



Tone



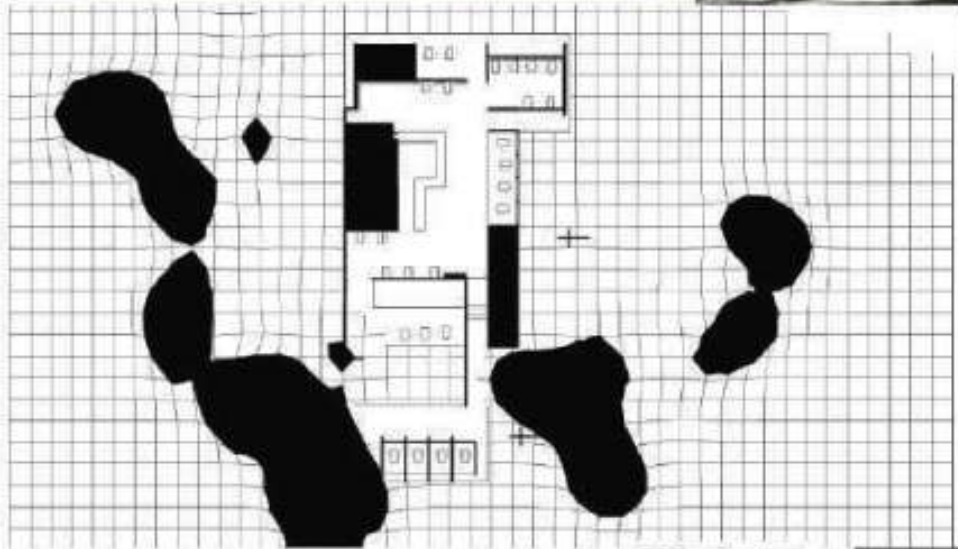
# BLACK ROCK RESTAURANT

A restaurant designed with a concept that responds to the context of the black stone hill. It is decorated and designed to match the context outside the project. Designed using black stone materials with dark tones to create an atmosphere to be part of the context. Feels like eating in the middle of the valley



## Material

WOOD  
MARBLE  
STONE



## PLAN



# AKI HOUSE



# AKI HOUSE

Aki House is a pop-up coffee shop project for selling coffee and bakery. Designed to feel the warmth of the coffee shop, comfortable, simple, using natural materials such as wood, stone that are not too bright and dark. in the middle tone To provide both baristas and customers with a homely experience.



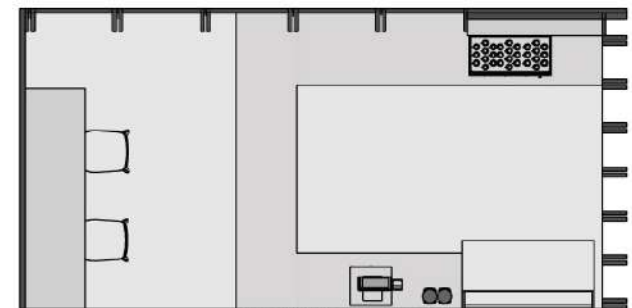
## MATORIOR



## TONE



## PLAN





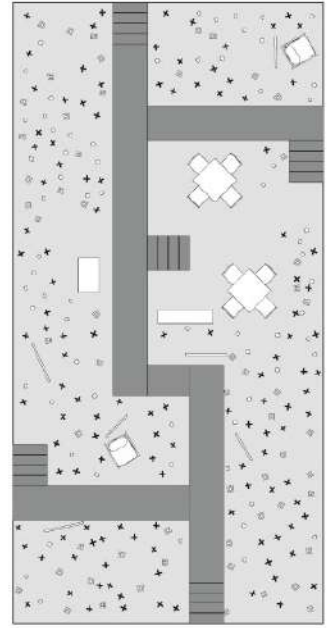


# WOODEN PAVILLION



Wooddan Pavilion It is a Pavilion design project of Wooden, a company selling wooden products. There is a real wood set and wooden furniture. For setting up a trade show booth in the Architect Fair, with many experiments and design ideas from bringing wooden products to create and design stories. to create new experiences from users in order to create a sense of connection with the products used as a design concept by telling the story of wood From the experience it was like walking into the forest. to observe and touch the wood that has been placed, which is Wooden's product

PLAN





# LINE PATH

# CONCEPT

THE DESIGN OF THE PUBLIC SPACE FOR STUDENTS STAFF AND TOURISTS WHO COME TO THE PROJECT. DUE TO LIMITED SPACE, THE SPACE IS NOT ENOUGH FOR DEMANDING USED. THIS IS THE MAIN IDEA TO CHANGE AND IMPROVE THIS AREA TO MORE BENEFIT. WHEN WE ADOPTING THE UNIQUE CHARACTERISTICS OF TRADITIONAL TAI LUE HOUSE. THEY CALLED THE SUNNY ROOF TERRACE IS BRINGING A UNIQUE ARCHITECTURE OF TAI LUE ONLY. IS A HIGHLIGHT OF THIS PIECE.



# MATERIAL



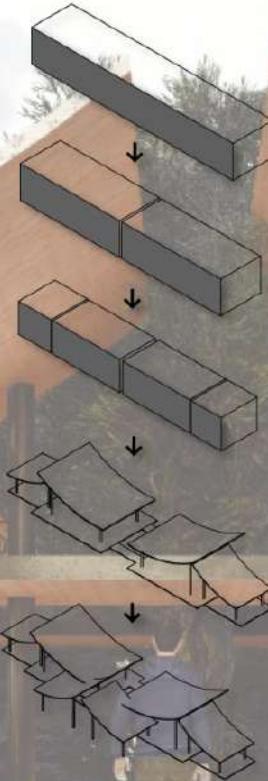
# SITE



BUS STOP IN FRONT OF IN CHIANG MAI UNIVERSITY

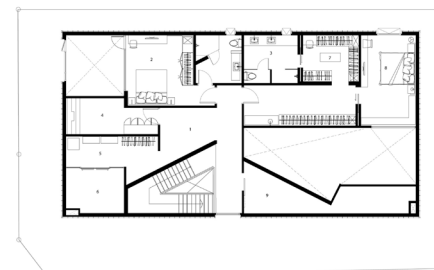
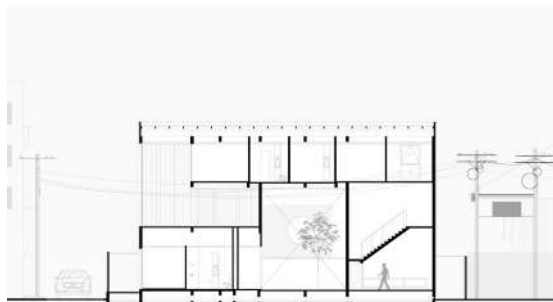
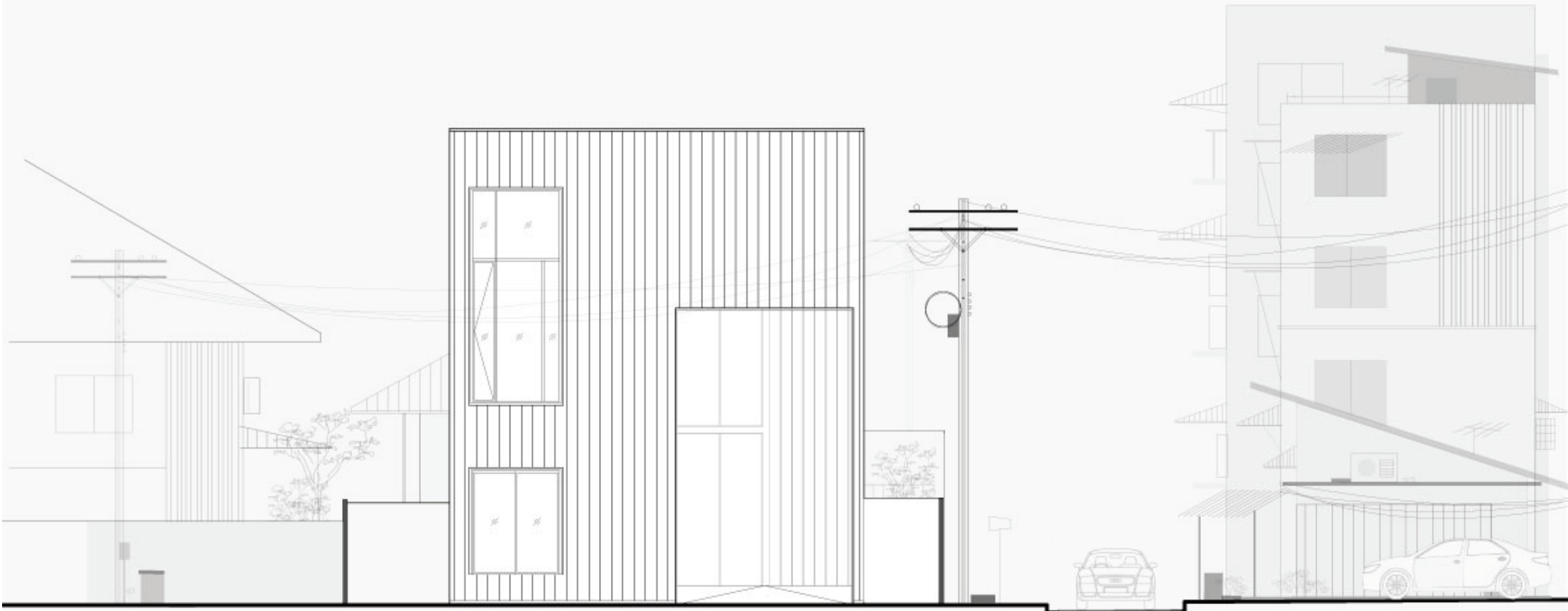


# DEVELOP DIAGRAM





# GRAPHIC PRESENTATION



- 3<sup>rd</sup> Floor Plan
- 1. Foyer
  - 2. Bedroom
  - 3. Bedroom
  - 4. Bath room
  - 5. Laundry
  - 6. Outdoor
  - 7. Walk-in-Closet
  - 8. Master Bedroom
  - 9. Storage



## Contact

Teng1.punchok@gmail.com

instargram : Teng1xyz

Line ID : Tengnuengp

083-049-5026